

3. Modified K40 Laser Cabinet - Part 2

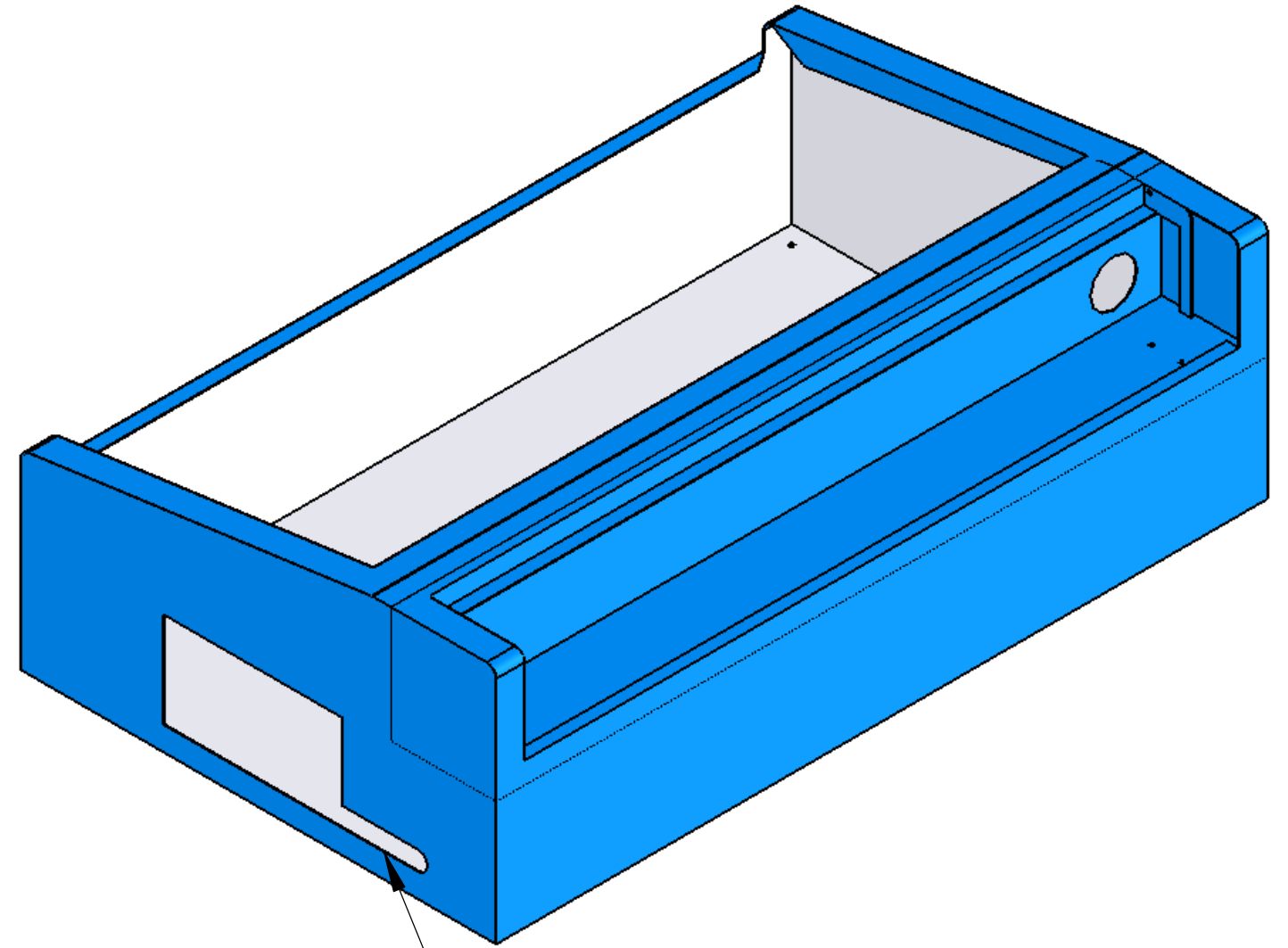
The location of the hole is to suit my SK40 upgrade - in which details can be found on my website.

I am calling my build the SK40 Upgrade, S=Swinks

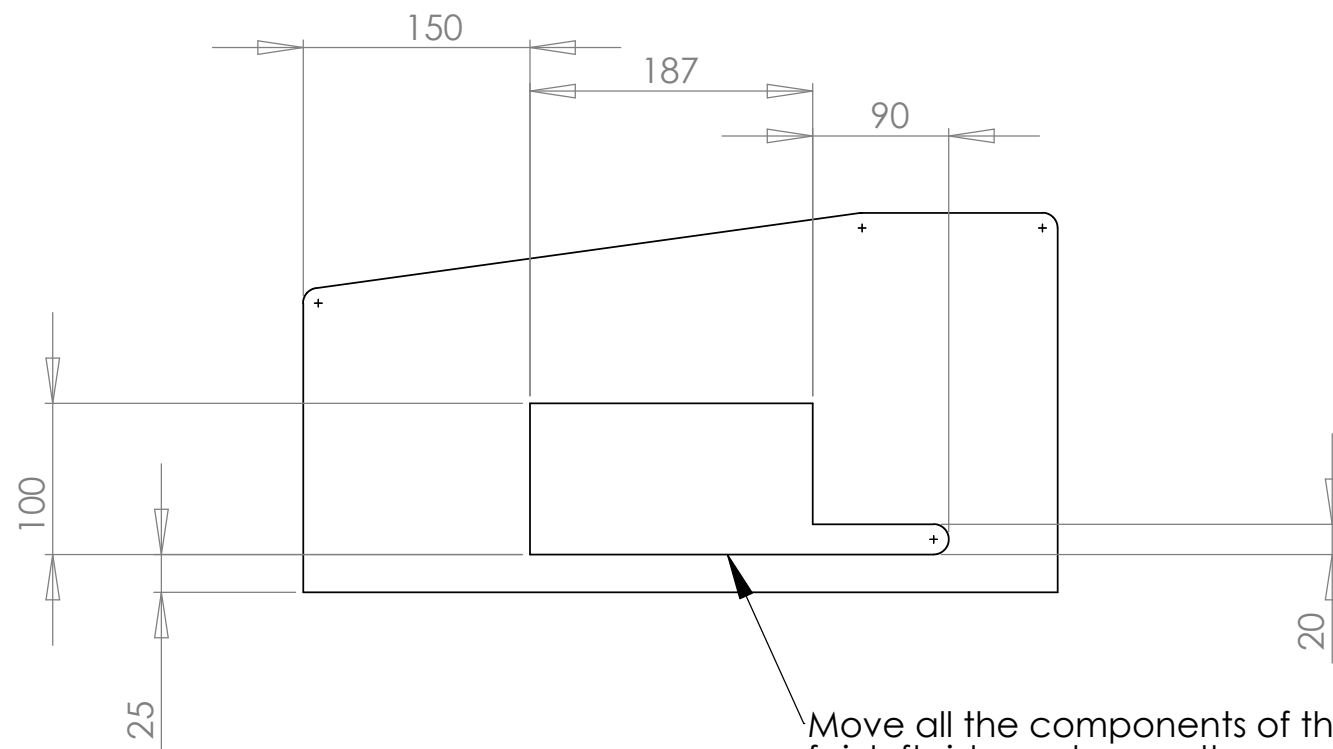
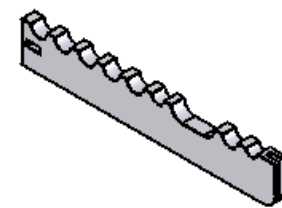
The 3D printed parts can be found at Shapeways - Search **SwinksSK40**

If you become a Shapeways member you can order and print up the 3D printed parts or download and print yourself.

Though these are not to be on-sold otherwise I will remove all items for free download for this item and future modifications.



2 x Cable Guides are 3D Printed to slide into this gap to protect cables passing through reducing risk cables being cut / damaged. The slot is to cable tie 2 of these together.



Move all the components of the control box to the fair left side and cover then angle grind this hole. Now the laser power supply can be passed through without any issues or disconnection required.