

STAR HOUSE ANNUAL REPORT

2024



STAR House Mission

STAR House is a crisis nursery which exists to provide a temporary home away from home for children and supportive services to uplift and strengthen the entire family.

Find out more at:
www.starhousemn.org

PO Box 4541
Saint Paul, MN 55101

info@starhousemn.org
EIN: 85-1391461

Table of Contents

- 2 Letter from the board
- 3 Community Impact
- 4 Donations
- 5 Donors
- 6 Expenses
- 8 2024 Financials
- 9 Leadership
- 10 Support



Letter from the Board

Dear Friends and Supporters,

As we reflect on 2024, I'm filled with immense gratitude and pride for what we've accomplished together. It was a truly momentous year, culminating in a milestone we've all eagerly awaited: we opened our doors on November 1st!

The response was immediate and heartwarming. We were at capacity our very first weekend, a testament to the critical need for the services we provide. Since then, it's been incredible to witness the transformation within our walls. Our house is now filled with the joyous sounds of children's laughter and play on weekends, and we've seen firsthand the profound relief on the faces of parents who utilize our crisis nursery.

These achievements would not have been possible without the unwavering dedication of our team, the tireless efforts of our volunteers, and the incredible generosity of donors like you. Your belief in our mission has allowed us to turn a dream into a tangible reality, providing a temporary home away from home for children and vital support for families.

As we look ahead to 2025, we are committed to expanding our reach and continuing to be a beacon of hope in our community. Thank you for being an indispensable part of this journey. Your ongoing support truly transforms lives.

With heartfelt gratitude,

Sarah E., Sarah A., Becki, Marissa and Lexie

Community Outreach

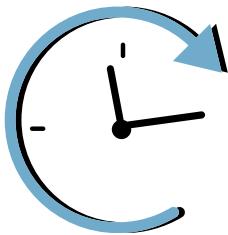
- ★ Grand Old Day
- ★ Highland Trick or Treat
- ★ Cub Foods



STAR House Volunteers

STAR House is **volunteer-driven** through several committees:

- ★ Communications
- ★ Community Advisory
- ★ Finance
- ★ Fundraising
- ★ Grants
- ★ Resource
- ★ Volunteer Relations

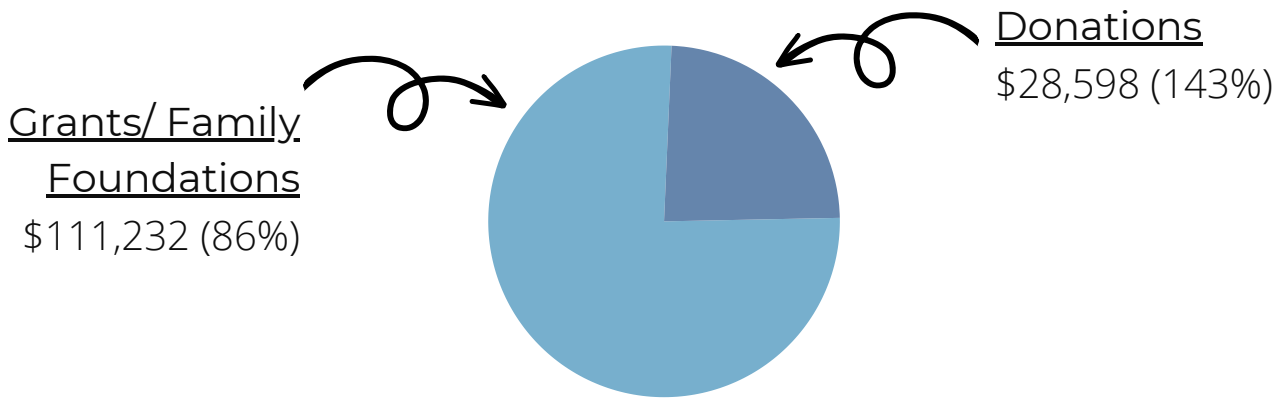


2024 volunteer
hours: **3,300+**



Value of contribution: **\$110,000+**

In 2024, STAR House raised \$139,000



Sauer Family Foundation \$51,000



Butler Family Foundation \$6,700



Johari Family Foundation \$40,000



Department of Human Services \$12,482

2024 In-Kind Donations

STAR House is lucky to have supporters who give in-kind donations.

In 2024, we received in-kind donations amounting to \$18,024!



2024 STAR House Donors

\$0-99

Annie Hickman	Nancy Gonzalez	Ellen Gerds	Sarah Ellefson
Barbara and Paul Rogne	Peggie Heitman	Emily Jo Moore	Science Museum MN
Becki Emerfoll	Peggy Fisher Johaningsmeir	Faith Clark	Veronica Cromett
Betsy Kaczmarowski	Ryan Wilson	Grace Ding	Yaya Cochran
Chris Aerts	Samantha Glass	Jan Kimes	
Corey Kaczmarowski	Sandra Match	Jane Hanzsek	
Dan Brill	Sandrea Schlottach	Jason Oliver	
Dmitriy Vinokur	Soaly Pin	Jennifer Cook	
E Fischer-Drew	Susan Kinneberg	Julie Eddington	
Eldora Pearson	Toni Fluke	Julie Ellefson	
Elizabeth Vue	Victoria Smith	Katherine Beck	
Jack Mada	William Untereker	Kathryn Murphy	
Jaida Emerfoll		Kayla Ulsby	
Jamie Greshowak		Kenton Kelly	
Jan Eisner		Kim Duea	
Janet Favorite		Kim Klose	
John Kaczmarowski		Kwik Trip	
Judith K.		Lexie Marsh	
Kelsey Steffes		Lina Rotchadl	
Laura Trengove		Linda Fischer	
Lauren Dwyer		McKenzie Lee	
Leslie Mayer		Melissa Hanzsek-Brill	
Lisa Kirscht		Melissa Kim	
Matthew Garcia		Mya Honeywell	
Matthew Long		Nox Voortella	
Michelle Schommer		Paula Fischer	
Michelle Weinberg		Phil & Brenda Grove	
		Rebecca Noecker	

\$500-999

Corinne Reinhardt
Jessica Sommers
Jill King
Magnifi Financial
Megan Clark
Moirra Webster
Samuel Clark

\$100-499

	Amy Atkinson		
	Ann Williamson		
	Barbara Guth		
	Becca Opem		
	Bob Bergdorf		
	Bonnie Grundtner		
	Brooke Manley		
	Charles Cook		
	Chris Murphy Zacharias		
	Debbie Fisher		
	Deirdre Kanzer		
	Dixie Ann Scott		
	Donna Harris		
	Elizabeth Kantner		

\$1000-2999

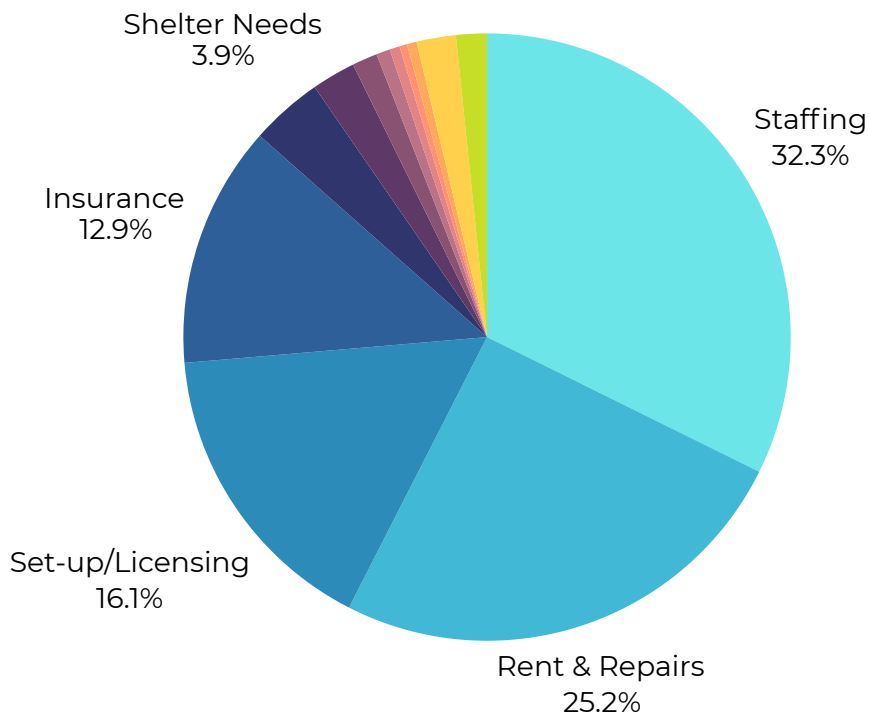
Daniel Lofthus
Jill Pitterle
Laura Hester
M Webster Larranaga
Marissa Pitterle
Sarah Anderson
Securian Financial
Susan Fairchild

\$3000+

44 North Foundation
Mike & Marcia Wolohan

Thank You!

2024 STAR House Expenses



Expenditures

Staffing	\$45,491
Rent & Repairs	\$35,468
Set-Up/Licensing	\$22,713
Insurance	\$18,146
Shelter Needs	\$5,426
Utilities	\$3,288
Volunteer Appreciation	\$1,892
Events	\$1,037
Training	\$759
Marketing & Advertising	\$577
Website/Systems	\$721
Other: Legal & Professional	\$2,948
Other: General & Admin	\$2,308

Total Expenditures \$140,768

2024 STAR House Financial Statement Operation Expenses

Statement of Activity STAR House January-December, 2024

	Total
Income	
DHS Grant	12,482.06
Donations	28,597.64
Grants	98,750.00
In-Kind Donations	18,024.00
Total for Income	\$157,853.70
Expenses	
Advertising & Marketing	507.15
Bank Charges & Fees	51.10
Childrens needs	1,537.99
Cost of Labor	33,606.52
Emergency Transportation	474.47
Events	1,036.79
Insurance	18,145.67
Legal & Professional Services	2,948.03
Licensing & Fees	1,000.00
Meals & Entertainment	775.44
Membership Dues	50.00
Office/General Administrative Expenditures	1,691.79
Office Supplies	248.73
Onboarding	2,444.00
Payroll Tax Expenses	9,440.35
Postage	19.50
Printing	44.00
Reimbursable Expenses	266.41
Rent & Lease	33,343.94
Repairs & Maintenance	2,123.64
Set-Up & Licensing Costs	21,712.64
Shelter Food & Meals	294.70
Shelter Supplies	3,118.39
Software, Websites & Online Databases	724.13
Training	758.73
Utilities	3,287.81
Volunteer Appreciation	1,116.53
Total for Expenses	\$140,768.45
Net Operating Income	\$17,085.25
Net Income	\$17,085.25

[STAR House Budget 2024.xlsx - Google Sheets](#)

STAR House Leadership



Sarah Ellefson
Executive Director

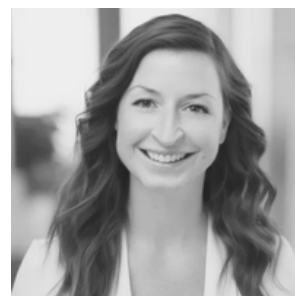
STAR House Board of Directors



Sarah Anderson
Board President



Becki Emerfoll
Board Secretary



Marissa Pitterle
Board Treasurer



Lexie Marsh
Board Member

**Watch the
2025
STAR House
Kick-Off Call**

Recording:
www.starhousemn.org/about-us



Support our Mission!

Contribute Time

To volunteer now, please reach out to volunteer@starhousemn.org or visit www.starhousemn.org/volunteering

Donate Goods

You can find an up-to-date wish list of STAR House material needs at www.starhousemn.org/donating

More Ways

- ★ Employer Programs
- ★ Benefit Event
- ★ Tell Friends, Families & Colleagues
- ★ Corporate Grant Invitations

Donate Funds

Please consider donating funds to support the mission of STAR House. You can contribute one time or monthly by visiting www.starhousemn.org/donating

Follow Social Media

@starhousemn



Facebook



LinkedIn



Instagram

Find out more at:
www.starhousemn.org

PO Box 4541
Saint Paul, MN, 55101

info@starhousemn.org
EIN: 85-1391461