



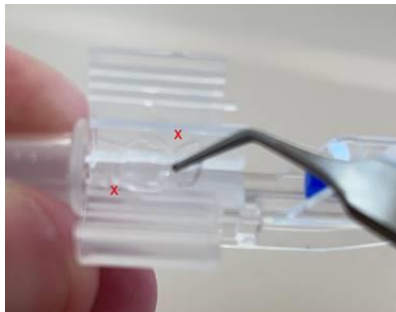
How to load Liocan Intraocular Lens in the supplied Injector Set

1. Open the cartridge or loading chamber and place viscoelastic both in the tip and along the chamber.

2. Take the IOL from the holder from the rounded side where it is being held (picture on the right). The notches are shown in red.



3. Place the IOL, without rotating the forceps (as it was in the holder), in the loading chamber. See picture below.



4. Using a forceps with elongated tips, gently push down on the IOL between the rails of the injector. Make sure the IOL is flat against the "runs" of the floor of the injector and remove the forceps. See picture below.



5. Close the cartridge and add a little visco at the end of the loading chamber.
6. Inject slowly without stopping, not too rapidly, keeping the cartridge's wings at 12 o'clock position. Do not rotate your hands.

For additional reference, please check the video in our website, courtesy of John S. Sapienza, Diplomate ACVO, Long Island Veterinary Specialists, New York.

<http://www.ajlvvet.com/liocan>

This is an addendum to the Instructions For Use supplied with Liocan Intraocular Lens. Carefully read the instructions prior to use the device. Failure to do so may result in patient complications.