

AJL
vet

COLLAGEN MEMBRANE

DESCRIPTION AND INDICATIONS



Ophthalmic medical device made from type I collagen, indicated for corneal repair in animals, such as corneal perforations, ulcers, and stromal defects.

Enables the growth of the epithelium of the ocular surface and facilitates the migration of epithelial cells for their revitalization.

Veterinary Use Only.

How supplied: dry, single and sterile.

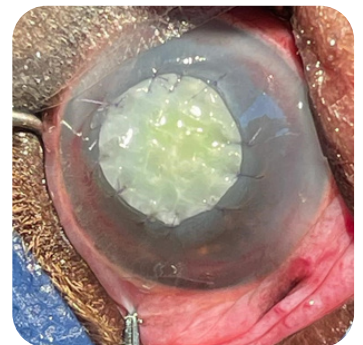
USE

Before using the product, it must be hydrated for 15-20 minutes in a sterile saline solution.

Before that, it may be custom cut and if needed, different layers can be stacked.

Ideally, it must be sutured in healthy cornea at 2-3mm from the wound (picture) and perform a third eyelid flap in more severe cases or when there is a risk of loss.

The stitches may be removed two weeks after surgery.



DIFFERENT MODELS

Ref: MCV22100

2cm (width) x 2cm (height) x 100um (depth)
recommended for stromal defects

Ref: MCV22200 *most popular*

2cm (width) x 2cm (height) x 200um (depth)
recommended for perforations and ulcers