

# LOS VAQUEROS RESERVOIR JOINT POWERS AUTHORITY

# LOS VAQUEROS RESERVOIR EXPANSION PROJECT



## PROJECT OBJECTIVES

- Develop water supplies for environmental water management
- Increase municipal and industrial water supply reliability
- Improve the quality of water deliveries

## PURPOSE

### WATER FOR WETLANDS



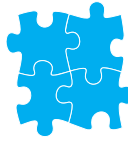
Reliable water supply for South of Delta wildlife refuges

### WATER FOR COMMUNITIES



Reliable water supply for 11 million Californians

### REGIONAL INTEGRATION



High potential for regional water system integration

### WATER QUALITY



Protection of delivered water quality

### RECREATION

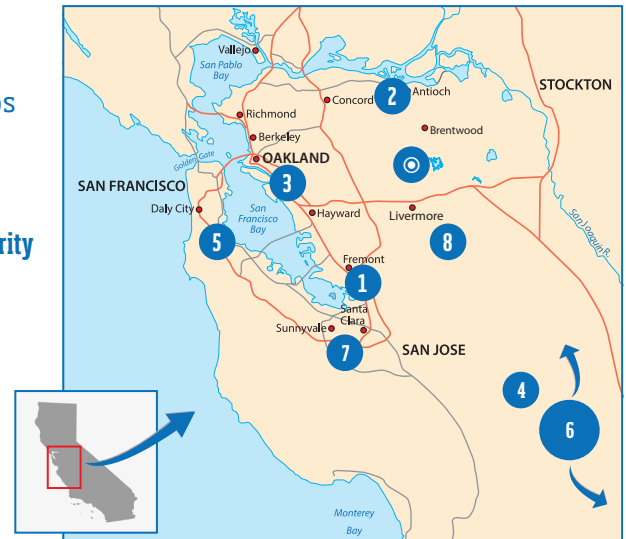


Recreation facility enhancement

## JPA MEMBERS

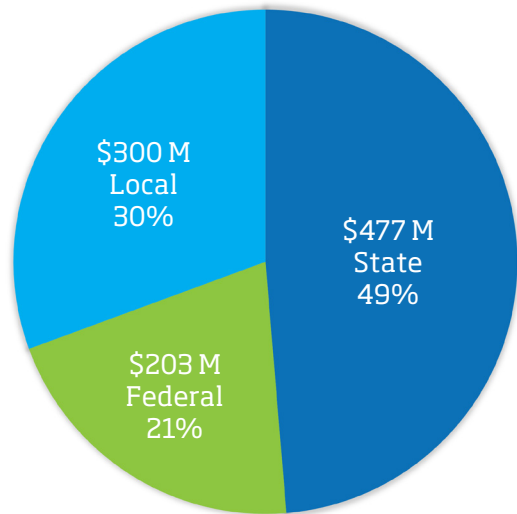
These agencies are members of the Los Vaqueros Reservoir Joint Powers Authority and seek to diversify their water supply portfolios against drought, emergencies, climate change and regulatory challenges.

- Los Vaqueros Reservoir
- 1 Alameda County Water District
- 2 Contra Costa Water District
  - City of Brentwood
- 3 East Bay Municipal Utility District
- 4 Grassland Water District
- 5 San Francisco Public Utilities Commission
  - Bay Area Water Supply & Conservation Agency
- 6 San Luis & Delta-Mendota Water Authority
  - Byron Bethany Irrigation District
  - City of Tracy
  - Del Puerto Water District
  - Panoche Water District
  - Westlands Water District
- 7 Santa Clara Valley Water District
- 8 Zone 7 Water Agency



# PROJECT FUNDING

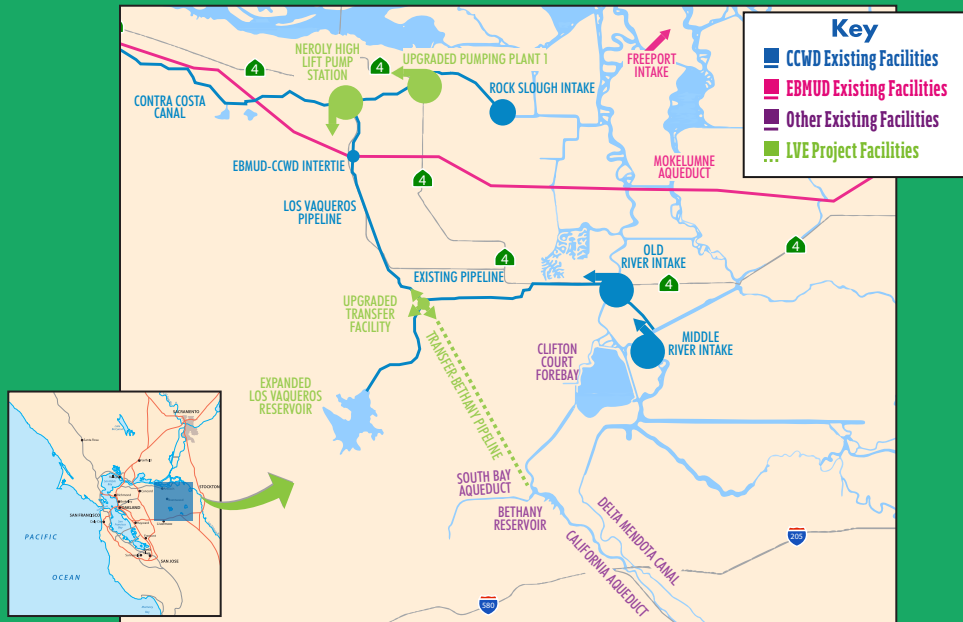
- Total development and construction cost ~\$980 M\* (2022 Dollars)
- State funding from California Water Commission
  - Total project development and construction costs escalated through the end of construction ~\$1.25 B
  - Supports public benefits, maximizing wildlife refuge benefits
- Local funding from partner agencies
  - JPA is seeking a WIFIA Loan
  - Supports regional reliability
- Federal funding from WIIN Act and Bipartisan Infrastructure Law funding has been authorized
  - Supports wildlife refuges



\*The source of the cost estimate is the WIFIA Loan Letter of Interest submitted to US EPA in September 2022.

# HOW IT WORKS

- 1 Water is pumped into the system from one of four existing Delta Intakes.
- 2 Once in the system, water is sent to an upgraded Transfer Facility pump station.
- 3 From CCWD's Transfer Facility, water can be delivered directly to local agency partners and wildlife refuges or pumped into an expanded Los Vaqueros Reservoir for later delivery.



# NEXT STEPS

The JPA is currently working with state and federal agencies, including wildlife refuge managers, to advance the project to construction.

