

The logo for the Los Vaqueros Reservoir Expansion Project is positioned in the upper right quadrant. It features the words "LOS VAQUEROS" in a bold, blue, sans-serif font, stacked above "RESERVOIR" and "EXPANSION" in a green, sans-serif font, and "PROJECT" in a green, sans-serif font at the bottom. To the right of the text is a vertical graphic consisting of five stacked, trapezoidal shapes that resemble a dam or a reservoir cross-section, transitioning in color from blue at the top to green at the bottom.

LOS VAQUEROS RESERVOIR EXPANSION PROJECT

The text "Agenda Item 3.1 – Program Management Approach" is centered in the lower half of the image. It is written in a large, bold, white, sans-serif font with a slight drop shadow, making it stand out against the background of the reservoir and hills.

Agenda Item 3.1 – Program Management Approach

The date "July 13, 2022" is located at the bottom center of the image. It is written in a white, sans-serif font with a slight drop shadow, matching the style of the other text.

July 13, 2022

Program Management Overview

- The Joint Exercise of Powers Agreement describes the Program Manager role as a key consultant to the JPA that will report to the Executive Director (see Section 4.8)
- The Program Manager responsibilities include:
 - Coordinate with the Executive Director regarding various design and construction activities
 - Support coordination with Contra Costa Water District (CCWD) and East Bay Municipal Utility District (EBMUD)
 - Duties include but not limited to budget tracking, scheduling, and quality control/quality assurance
 - May also contract for additional services as required

Program Management Overview (cont.)

- Competitive selection of a Program Management Consultant is a high priority activity to achieve multiple near-term goals:
 - Provide support to the new Executive Director
 - Allow for transition of key responsibilities from CCWD to the JPA
 - Maintain the current approach that eliminates the need for JPA employees

Introduction to Spider Diagram

- Diagram was developed to illustrate key agreements and interconnections between the JPA, CCWD and the JPA Members
 - Reclamation, California Water Commission (CWC), any potential Municipal Bond Holders (for local funding) are also shown to illustrate parties to various funding agreements

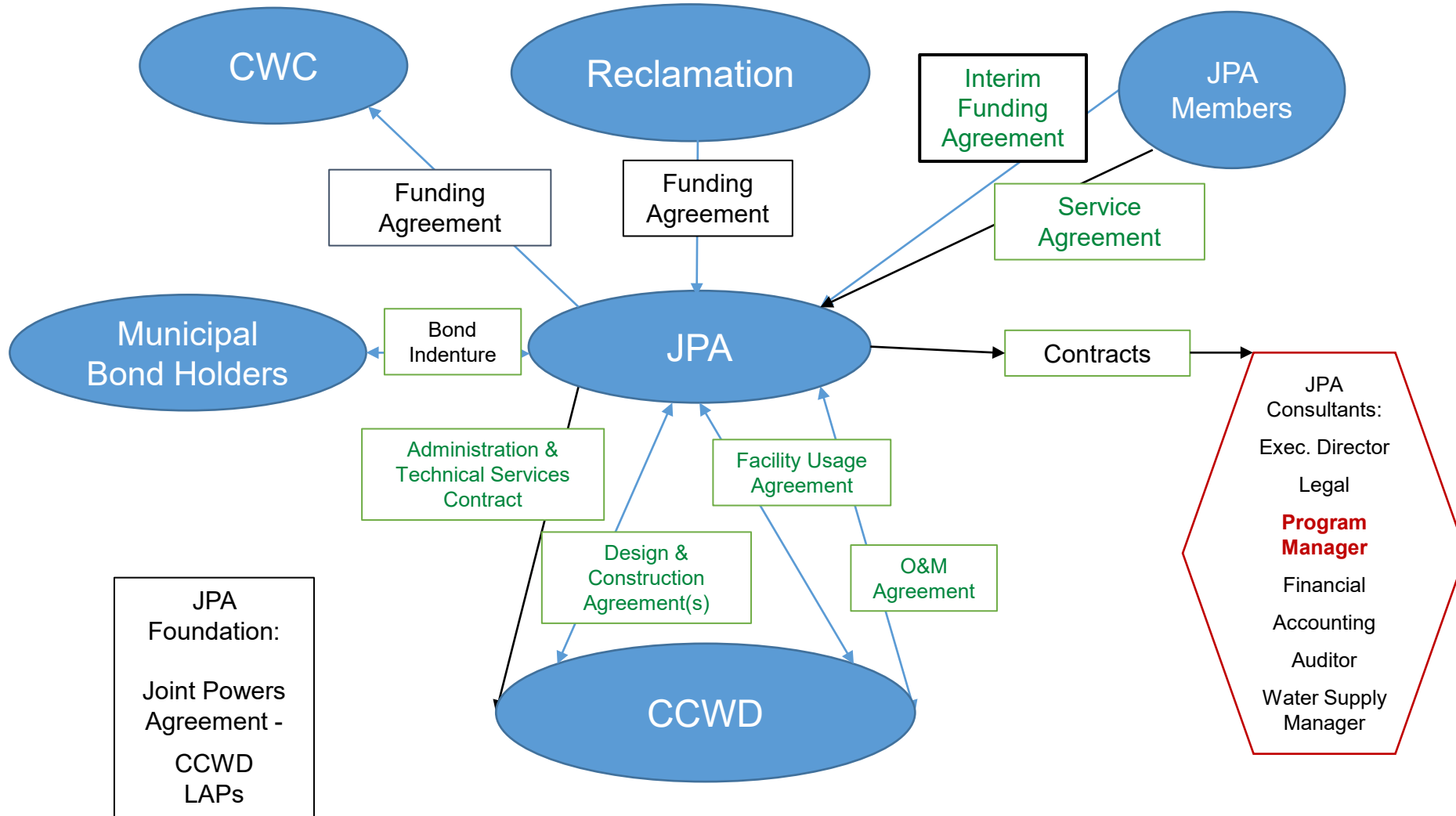
Introduction to Spider Diagram (cont.)

- Diagram does not show all agreements that are required for the permitting, design, construction, and operation stages of the Phase 2 Los Vaqueros Reservoir Expansion (LVE) Project
 - For example, the JPA Agreement described the need for a Design and Construction Agreement between EBMUD and the JPA

Introduction to Spider Diagram (cont.)

- Diagram identifies various contractors to the JPA, including the Executive Director, Legal Counsel, **Program Manager**, Financial Advisor, Accounting, Independent Auditor, as well as a future Water Supply Manager
 - Additional services to the JPA can be provided under contract to the JPA, or as part of the Program Management Consultant contract (provided by prime consultant or by one or more subconsultants)

Spider Diagram



Program Management Approach

- Project team has researched various Program Management models
 - An “Integrated Team” model is recommended due to several factors:
 - JPA governance structure and diversity of Members
 - Existing facilities owned and operated by CCWD and EBMUD
 - Design and construction services for new and modified facilities provided by CCWD and EBMUD
 - Well established consultant team managed by CCWD providing permitting, design, legal, and other services
 - Current status of LVE Project development

Program Management Scope of Work

- Further expanding on the responsibilities described on slide 2 there are several potential scope components:
 - **Support for Executive Director**
 - Program Advisor
 - Program reporting
 - Document Control
 - Cost and Schedule Control
 - Risk and Change Management
 - Quality Management
 - Public Participation and JPA website hosting
 - Training and Skills Transfer

Program Management Selection Process

- Competitive selection process based on CCWD administrative procedures
 - Member agency staff would be invited to participate in review of the Request for Proposals (RFP) and to serve on a selection panel to review proposals and conduct interviews
 - Similar approach was used on selection process for Formation Counsel/Interim General Counsel prior to formation of JPA
- Contract with selected consultant would require approval by the JPA Board


Program Management Selection Criteria

- Proposed selection criteria is a standard, qualifications-based selection process
- Proposal Evaluation Criteria:
 - Overall Proposal Quality
 - Specialized Experience and Capabilities
 - Firm Qualifications and Project Team
 - Approach to Work

Program Management Selection Criteria (cont.)

- Interview Evaluation Criteria:
 - Presentation
 - Questions and Answers
- Proposals and Interviews are intended to provide enough information to evaluate firms and determine the firm with the best potential to support the JPA and integrate with the existing team
- Proposed selection criteria will be reviewed to ensure consistency with adopted JPA policies and procedures, including Diversity and Accessibility Statement

Tentative Schedule



Ongoing	Outreach to potential consulting firms
August 10	Additional discussion with Board as needed
September 14	Consider authorizing release of RFP
November 4	Proposals due
TBD	Consultant interviews
January 11	Consider approval of consultant contract

Note: Dates are subject to change – adjustments may be required to coordinate with the anticipated schedule for Executive Director selection and contract award