



From the collection of Port Fairy Historical Society

1. Title: View of Moyne River and Tramway Bridge Port Fairy
c. 1869

REF: 62-01a-003



2. Title : View down Gipps St. to the South West Passage and
Griffith Island Port Fairy c. 1908

REF: 62.03b.015



3. Title : Dray and Horses with Watson's grain at Cheapside Warehouse
Sackville Street Port Fairy c. 1910



4. Title : View of Moyne River, upstream of Wharf.

Port Fairy c. 1904 REF:

62-09c-029



5. Title : MV Port Fairy Refrigerated Cargo Ship
with small gaff rigged dinghy in foreground
c.. 1930



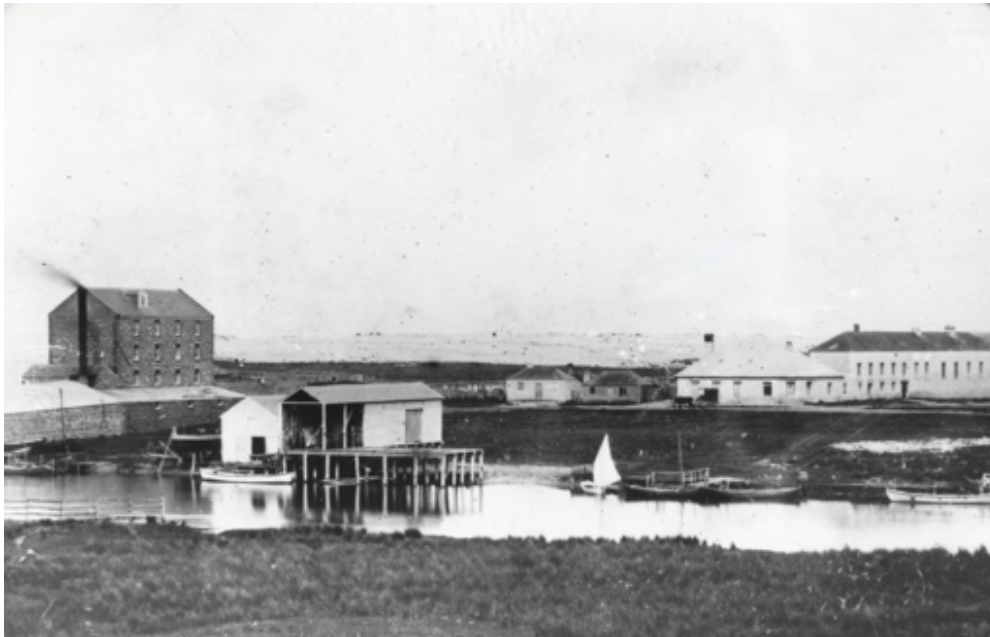
6. Title : Cowtan & Bland Warehouse and bullock wagons
Bank Street Port Fairy c. 1863
REF: 62.03.073



7. Title : View of Moyne River,
looking north east from Moyne Steam Flour Mill Port Fairy c. 1900



8. Title : View upstream of Moyne River west bank.
Port Fairy c 1960
REF: 62-09c-039



9. Title : Police barracks and flour mill on the River Moyne
Port Fairy c. 1870
REF: 62.03.143



10. Title : View of Bank Street
Port Fairy from west of Barclay street to the east c. 1921



11. Title : South coast of Griffiths Island
Port Fairy towards the lighthouse c. 1925
REF: 62.09.026



12. Title : View to west from St. John's Church tower with James street
Port Fairy in the foreground c. 1969 6
REF: 2.03b.020



13. Title : View downstream of Moyne River,
Port Fairy from the B&KSN lookout tower c. 1932
REF: 62-09c-003



14. Title : The Pavillon and Bathing Boxes at South beach Port Fairy c. 1903



15. Title : South Beach Bathing Boxes and playground
summertime Port Fairy c. 1910



16. Title : Port Fairy Botanic Gardens
with a divided pathway and mature deciduous and
Norfolk Island Pines c. 1919
REF: 62.02A.005a



17. Title : 180 degree angle image of the Moyne River,
Port Fairy c. 1905
REF: 62-09c-023 2



18. Title : The Junction of Sackville and Bank Street
Port Fairy c. 1907
REF :62.03a.



19. Title : 180 degree angle image of the Moyne River,
Port Fairy with the S.S. Casino departing.
C. 1905
REF: 62.03b.016



20. Title : The Moyne River,
Port Fairy public wharf,
King George Square and Gipps street
Port Fairy c. 1906