

[View this email in your browser](#)



MOUNT ROGERS
Regional Adult Education Program
www. mrraep.com 800-322-7748

FEBRUARY

Newsletter ♥

Please Note the February GED testing dates

Bristol Public Library

[Subscribe](#)

[Past Issues](#)

[Translate ▼](#)

6-Tues

17-Sat

28-Wed

Galax/Crossroad

February

3-Sat

16-Fri

26-Mon

FROM THE DESK OF..

SHANNON MUTTER

PROGRAM MANAGER



I hope everyone has made it through the rollercoaster weather of January ok! I am a snow person, so I really enjoyed the snow, however, the single digit temperatures were a challenge!

How is the GED Ready Campaign going? I would love to hear about your student successes!

February is a great day of national observances to incorporate into our adult ed lessons. Here are just a few:

- February 7- **National Periodic Table Day**-great science practice
- February 9- **National Pizza Day**- great way to learn about fractions!
- The third Monday in Feb- **President's day**- great way to learn about the contributions made to our Constitution
- February 26-**National Letter to an Elder day**- great writing and grammar practice
- February 27- **National Anosmia Day**- great way to introduce new vocabulary- do you know what anosmia is?

Of course, you could always just celebrate fun days like **Love Your Pet Day on February 20th** like I plan to do with my biggest fur baby, Rigley (see picture

Shannon

Reminders: (I know you see this every month...but....they are really important!)

- **Make sure you are monitoring students for posttest---prepare them by enrolling them on TABE Academy.**
 - **How are you encouraging your students to get to the 12 hour mark...the 40 hour mark?**
 - **How are you preparing your students to meet their personal and workforce goals?**
 - **Are you doing one-on-one lessons with your students as well as online lessons? Remember we should not be relying on Essential Ed and Aztec solely.**
- Thank you for all you do for our program and our students! Be sure to take care of yourself and let me know if you need anything.**

Kayla Hagy

Data Specialist

Here are your friendly monthly data reminders

December attendance is due next Monday, February 5th (if it's not already entered and completed into your google sheet)

All ASPD's can be submitted through Dropbox for any ASPD's that have yet to be submitted.

If there is anything I can do for you all, please let me know.

Thanks for all you all do. 😊



Hannah Ingram

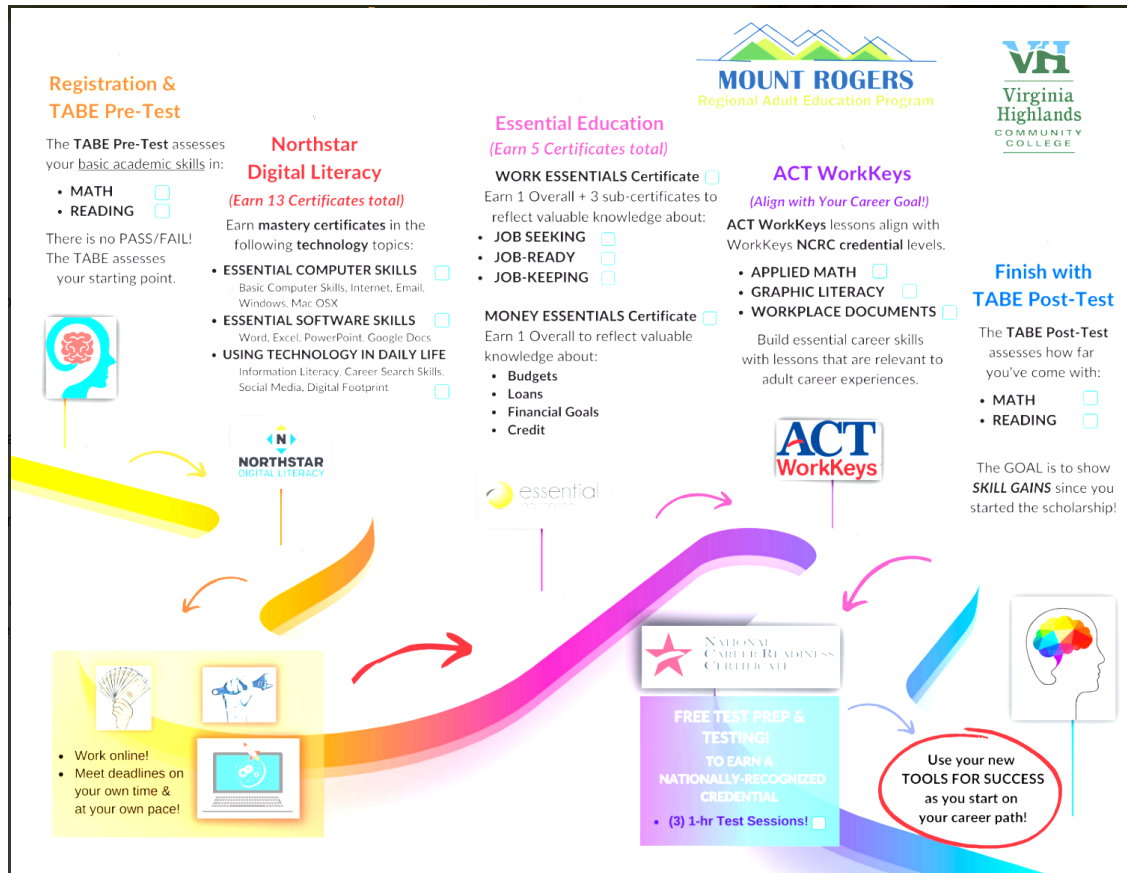
Career Pathways Coordinator / IET Programming

Hi everyone!

I've updated the flyer for our IET program, so you can get rid of any previous versions you may have floating around. Please print and post this in your classroom, if you'd like! This program is designed to provide at least 40 hours of career readiness training.

If you have students who would like to work on their own to improve their job seeking skills, or digital literacy, or earn a Career Readiness Credential... these courses are a great fit! Reach out if you'd like to learn more about how to best utilize these courses with your students.

If you have students ready to level up in life and who are interested in enrolling with a local training program, I'm here to help! They may even be eligible for our



Happy
BirthDay
to you!

February

4th Mattie Robinson

27th Joybeth Workman



Copyright (C)2024 MRRRAEP* All rights reserved.*

Our mailing address is:
1 PARTNERSHIP CIRCLE
ABINGDON, VA 24210