

# JULY 2026

Sunday	Monday	Tuesday	Wednesday	Thursday	Friday	Saturday
			1 Summer taxes Mailed	2 <b>CLOSED</b> in Observance of Fourth of July	3	4 <b>4TH OF July</b>
5	6 <b>CLOSED</b> For Technical Maintenance	7	8	9 Nature Park Meeting 7 PM	10	11
12	13	14 Township Board Meeting 4 PM	15 Planning Commission Meeting 7 PM	16	17	18
19	20	21 Board of Reveiw Meeting 8 AM - 9 AM	22	23	24	25
26	27	28	29	30	31	<b>HELLO SUMMER</b>



# AUGUST 2026

MON

TUE

WED

THU

FRI

SAT

SUN

						1	2
3	4	5	6	7	8	9	
10	Township Board Meeting 4 PM <sup>11</sup>	12	Nature Park Meeting 7 PM <sup>13</sup>	14	15	16	
17	18	Planning Commission Meeting 7 PM <sup>19</sup>	20	21	22	23	
24	25	26	27	28	29	30	
31							

2026

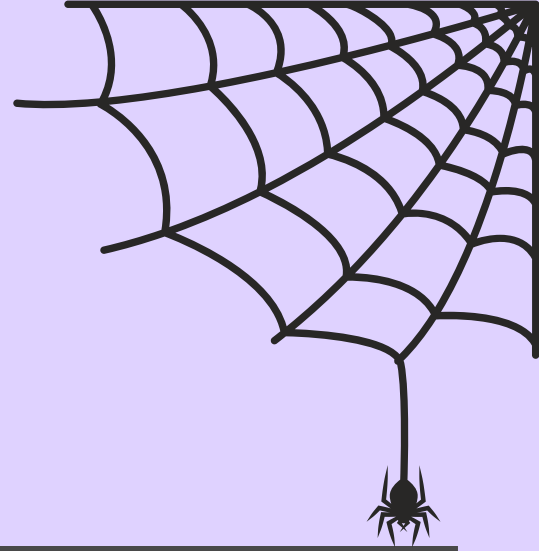
# September

Monday	Tuesday	Wednesday	Thursday	Friday	Saturday	Sunday
	1	2	3	4	5	6
7  In Observance of Labor Day	8 <b>Township Board Meeting 4 PM</b>	9	10 <b>Nature Park Meeting 7 PM</b>	11 <b>Delayed Trash Pickup</b>	12	13
14	15	16 <b>Planning Commission Meeting 7 PM</b>	17	18	19	20
21	22	23	24	25	26	27
28	29	30				

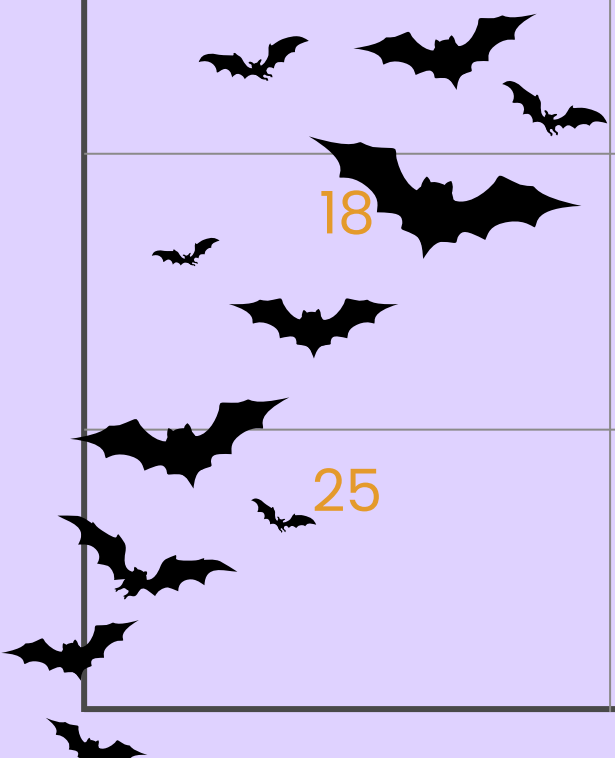


2026

# October



Sunday	Monday	Tuesday	Wednesday	Thursday	Friday	Saturday
				1	2	3
4	5	6	7	8 Nature Park Meeting 7 PM	9	10
11	12 <b>CLOSED</b> In Observance of Indigenous Peoples'/Columbus Day	13 Township Board Meeting 4 PM	14	15	16	17
18	19	20	21 Planning Commission Meeting 7 PM	22	23	24
25	26	27	28	29	30	31 HALLOWEEN






2026

# November



Sunday	Monday	Tuesday	Wednesday	Thursday	Friday	Saturday
1	2	3	4	5	6	7
8	9	10 Township Board Meeting 4 PM	11 <b>CLOSED</b> In Observance of Veteran's Day	12 Nature Park Meeting 7 PM	13	14
15	16	17	18 Planning Commission Meeting 7 PM	19	20	21
22	23	24	25 	26 <b>CLOSED</b> In Observance of Thanksgiving	27 Delayed Trash Pickup	28
29	30			<i>happy thanksgiving</i>		



2026

# December



Sunday	Monday	Tuesday	Wednesday	Thursday	Friday	Saturday
		1	2	3	4	5
6	7	8 Township Board Meeting 4 PM	9	10	11	12
13	14	15	16 Planning Commission Meeting 7 PM	17	18	19
20	21	22	23	24 CLOSED In Observance of Christmas	25 MERRY CHRISTMAS	26
27	28	29	30	31 CLOSED In Observance of New Years Eve		

