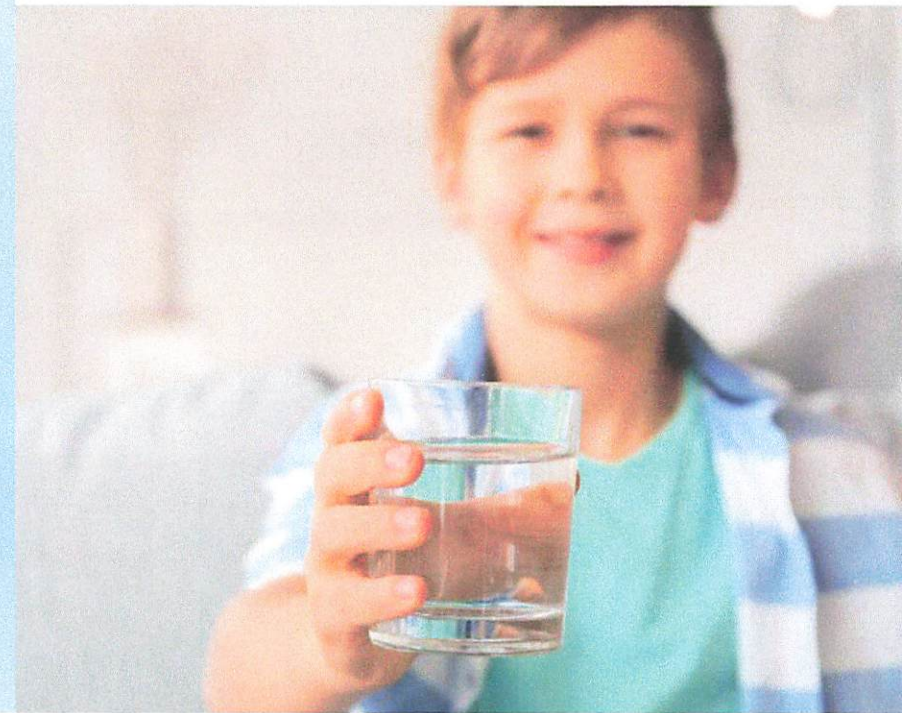


Consumer Confidence Report

Bay Area Water System

Annual Water Quality Report for 2022



Consumer Confidence Report Bill Stuffer

2022: A YEAR WITH ZERO WATER QUALITY VIOLATIONS

Water Quality Report

Every year we put together an annual water quality report. This report describes the source and quality of your drinking water.

Find it at

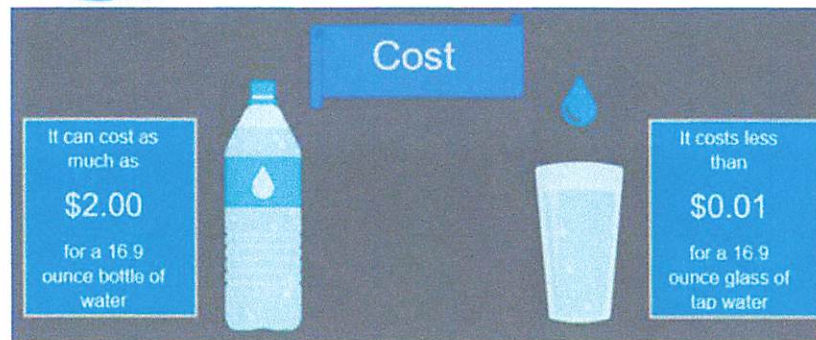
www.baycodws.org/ccr2022.pdf

To request a paper copy, contact us at bawtp@baycodws.org or (989) 439-7245.



Cost of Water

Our goal is to keep your water rates as low as possible without sacrificing water quality.



Notable Testing Results From 2022

Substance	Results
Lead/Copper	Below Regulatory Action Levels
PFAS	Not Detected
E.coli Bacteria	Not Detected
Disinfectant Residuals & Byproducts	Below Regulatory Levels

For More Detailed Results

View our water quality report at:

www.baycodws.org/ccr2022.pdf

Did You Know Your Water is Filtered Through Membranes?

OUR RAW WATER COMES FROM LAKE HURON. IT IS PUMPED 50 MILES SOUTH TO THE BAY AREA WATER TREATMENT PLANT (BAWTP) FOR FILTRATION.



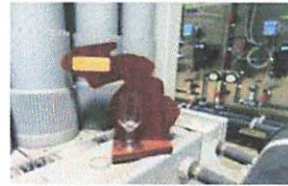
THE BAY AREA WATER TREATMENT PLANT STARTED PRODUCING WATER IN 2015. ALMOST 100,000 PEOPLE RECEIVE WATER FROM THE PLANT. IT IS CAPABLE OF PRODUCING 17.4 MILLION GALLONS OF WATER A DAY (MGD). THE DAILY AVERAGE FLOW IS 7.4 MGD.



THE WATER PLANT HAS 8 MEMBRANE SKIDS. A SKID IS MADE UP OF 240 MEMBRANE MODULES. THESE MODULES FILTER ALL THE RAW WATER THAT FLOWS THROUGH THE PLANT. IN TOTAL, THE PLANT HAS 1,920 MEMBRANE MODULES THAT FILTER WATER.

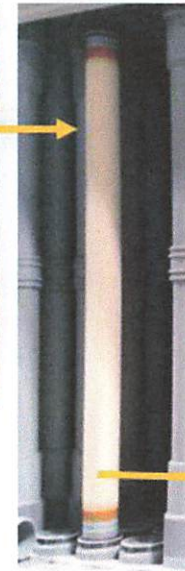


MEMBRANE SKID

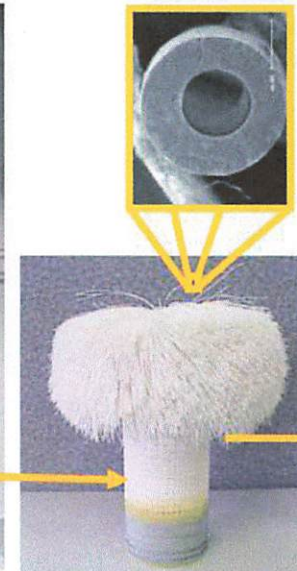


2021 AWWA Regional Best Tasting Water Award

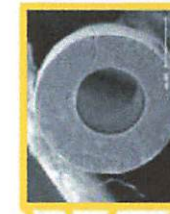
EACH MEMBRANE MODULE IS MADE UP OF 7,400 HOLLOW MEMBRANE FIBERS. WATER IS PUSHED THROUGH THE SURFACE OF THESE FIBERS (SURFACE PORES ARE SMALL-.04 MICRONS). FIBERS CAPTURE SOLIDS, BACTERIA, AND OTHER DEBRIS WHILE ALLOWING WATER TO PASS THROUGH. EVERY DAY, 14 MILLION FIBERS ARE FILTERING WATER IN THE PLANT!



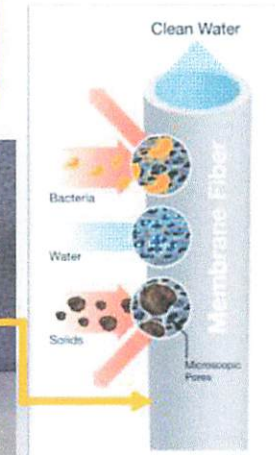
MEMBRANE MODULE



MEMBRANE MODULE CUT OPEN



HOLLOW MEMBRANE FIBER



HOLLOW MEMBRANE FIBER

MEMBRANE MODULES ARE REPLACED EVERY 7-10 YEARS.

WE'D LOVE TO HEAR FROM YOU!

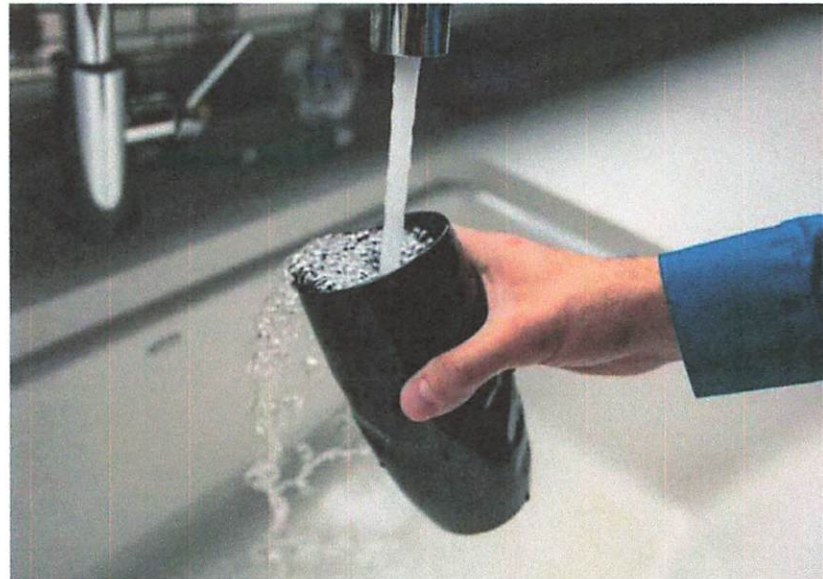
DO YOU HAVE QUESTIONS OR COMMENTS ABOUT YOUR WATER? FEEL FREE TO CONTACT US VIA EMAIL AT BAWTP@BAYCODWS.ORG OR BY CALLING (989) 439-7245.

SVSU Team-Up

- Survey posted on community websites & Facebook
- MLive put out story
- Received 250+ responses

Love or hate your tap water in Bay County? Officials want to know what you think

Published: Mar. 24, 2023, 2:55 p.m.



Advertisement

Students from an SVSU marketing class developed an online survey that asks participants what they think of the tap water they receive from the Bay County Department of Water and Sewer. File photo. Rachel Ellis file photo | For MLive.com



By [Caitlyn French](#) | cfrench@mlive.com

Recommended for You

EPA PFAS Maximum Contaminant Levels

Current Michigan MCLs:

PFOA- 8 ppt

PFOS- 16 ppt

PFNA- 6 ppt

PFHxS- 51 ppt

PFBS- 420 ppt

HFPO-DA- 370 ppt

PFHxA- 400,000 ppt

Compound	Proposed MCLG 2023	Proposed MCL 2023
PFOA	0	4 ppt
PFOS	0	4 ppt
PFNA	Hazard Index <1.0*	Hazard Index <1.0*
PFHxS		
PFBS		
HFPO-DA (Gen X)		

EPA PFAS Regulations

- March 14, 2023- EPA set proposed Maximum Contaminant Levels for PFAS
- Now-May 2023- EPA Taking Public Comments
- December 2023- MCLs Finalized
- December 2026- MCLs Become Enforceable Standards
 - Compliance to be calculated as a running annual average

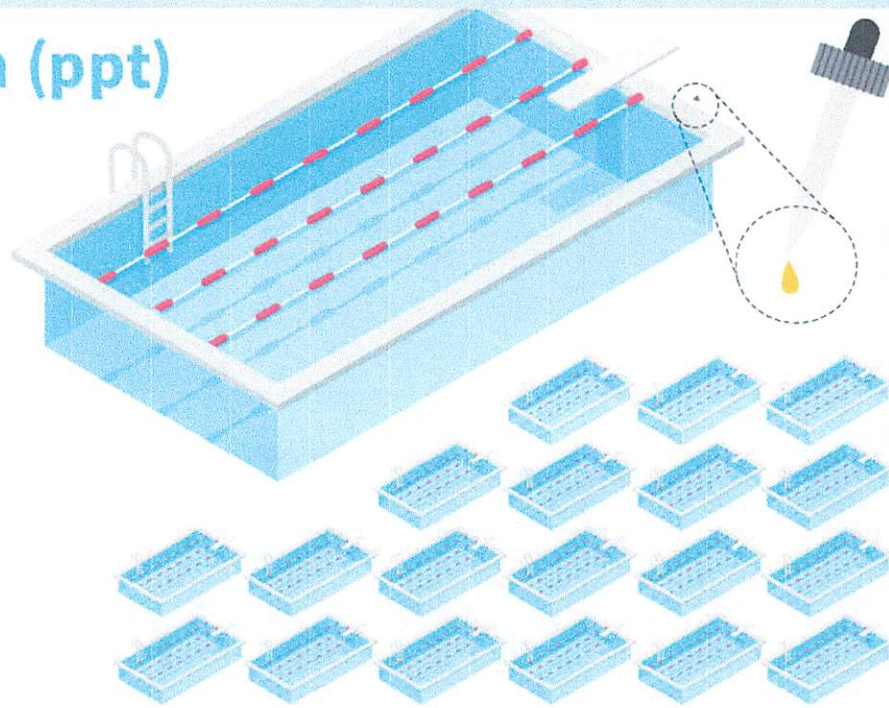
What is a Part Per Trillion (PPT)?

- 1 second in 32,000 years
- 1 square inch in 250 square miles
- 1 ounce in 7.5 billion gallons of water

1 part per trillion (ppt)

IS EQUIVALENT TO A
SINGLE DROP OF
WATER IN

20 olympic-sized
swimming pools



What is the Equivalent of 4 PPT?

4 PPT= 1 ounce in all the water that leaves our plant in 8 ½ months

