

A large, stylized number '1' in a gold color. The top of the '1' is curved, and it sits on a horizontal gold bar. Below the bar, the word 'SOUND' is written in a bold, black, serif font.

1 SOUND



CONTENTS

ABOUT US

MONO + STEREO TECHNOLOGY

CANNON COAXIAL SERIES

TOWER COLUMN SERIES

CONTOUR POINT SOURCE SERIES

SUBWOOFERS

COMPLETE SYSTEMS

ACCESSORIES

1 SOUND CUSTOM SHOP

ABOUT US

1 SOUND is an American-made, professional loudspeaker manufacturer backed by decades of industry experience, utilizing the best research and development lab in Veneto, Italy. We aim to support and provide creative audio solutions for the needs of the commercial audio industry.

WHO WE ARE

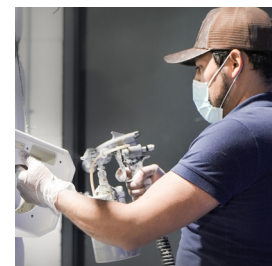
1 SOUND is made up of a team of talented and experienced audio professionals that contribute to every aspect of the process from design and fabrication to distribution and implementation.

WHERE WE ARE

All 1 SOUND speaker systems are manufactured in the USA, specifically Monmouth County, NJ. We use the best materials available from the United States and Italy. Manufacturing in the USA gives 1 SOUND the advantages of quick turnaround times, control over the supply chain and the pride of being built in the USA.

WHY WE ARE

1 SOUND brings 40 years of experience to each carefully made loudspeaker design. Our goal is to support the professional audio industry with tools that are new to the market, bringing the latest technology to provide next generation solutions. We build using premium materials with highly trained craftsmen while maintaining strict quality control criteria.





1 SOUND FOUNDER & DESIGNER, LOU MANNARINO

Lou has been working in the audio and music industry for over 40 years and started building speakers at 12 years old while mixing sound for school plays. Now his artist list includes Paul McCartney, Jay-Z, Bon Jovi and The New York Philharmonic. He has designed audio systems for The Metropolitan Museum of Art, Lincoln Center for the Arts, The Four Seasons Hotels and many other notable venues. Lou is also the founder of L&M Sound & Light, one of the first full service production companies in NYC.

Lou decided to start 1 SOUND because he needed audio solutions that did not already exist. This company is a culmination of his life's work and professional experience, motivated by the goal to provide innovative and unique tools for the professional audio industry.

Adamant about 1 SOUND products being made in America, Lou aims to use the finest materials for 1 SOUND designs. He believes in a hands on approach when it comes to building and stocking in the USA as well as in our individualized customer support.



C4 Prototype, New York Philharmonic

MONO + STEREO TECHNOLOGY

“The Mono + Stereo loudspeaker is simply outstanding to my ears, the mono imaging with a wide stereo spread is phenomenal.”

*Steve Remote, AuraSonic
Multiple Grammy Award Winning Engineer*

“The stereo image emanating from a single MS34 is unique, impressive and an absolute pleasure to experience.”

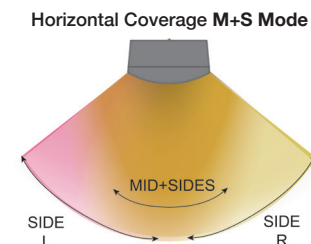
*Thomas Knauss, President of KMK Technologies
Audio Consultant & Designer for multiple Hard Rock Hotels & Casinos*



PANORAMA MS34



The Panorama MS34 is a two-channel, point source loudspeaker system. By utilizing Mono+Stereo mode with the MS Controller, it provides the listener with a mono sound field surrounded by the wide spatialization of stereo.



The M+S Controller is for the MS34 to operate in M+S mode. It is not necessary to operate the MS34 in mono (line source) mode. It is 19" rack mountable.

Utilizing our proprietary, analog Mono+Stereo Controller, the mono+stereo starts with L/R and divides it into a mono (mid) plus sides. From there, the M+S is arranged in this compact loudspeaker system preserving the true mono while surrounding the listener with a spacious stereo image.

As a stand alone mono loudspeaker (switch and preset dependent) it can become a horizontal or vertical line source helping to preserve its off axis frequency response while adding 5 dB of gain.

This loudspeaker is "one of a kind" as a front fill, under balcony, monitor and an installed distributed system.

SPECIFICATIONS

Description: M+S, 2 channel coaxial with an optional mono (line source) switch (DSP dependent)

Bandwidth: 95 Hz - 18 kHz (-6 dB)

Max SPL: 114 dB SPL @ 1m with preset

Power: 200w + 200w (program), 100w + 100w (AES)

Directivity: 100° conical (-6 dB)

Elements: (1) 4" coaxial w/ 1.4" HF compression driver, (2) 4" full range drivers, (2) 3.5" passive radiators

Impedance: 16Ω + 16Ω

Connectors: (2) NL4 plus a switch which changes M+S mode to mono (line source) mode, (1) Neutrik NDL dummyPLUG

IP Rating: IP55 indoor/outdoor and salt water resistant

Rigging: (2) M6 points

Weight: 9.4 lbs / 4.3 kg

Construction: Finland birch plywood (urea glue), matte salt and UV resistant polyurea coating, 316 stainless steel hardware, 3D spacer mesh fabric

Accessories: C-Clamp (wall, truss, mic stand, ceiling mounting), L-bracket, Pole Mount Adaptor

Physical: 13.5" (346 mm) x 5.5" (144 mm) x 7.5" (197 mm)

Colors: stocking black and white, custom colors and fabrics available

THE CANNON COAXIALS

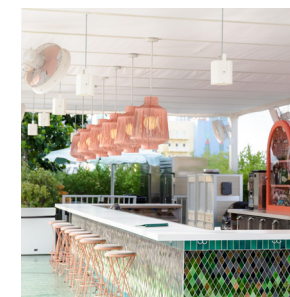
The Cannons are unique high-fidelity, full-range loudspeakers. Each model, C4, C5, C6, and C8, boasts extended low frequency remarkable for their size. These coaxial loudspeakers have a beautiful sound quality, where the mid-range is pronounced and projected. The Cannons have an elegant and substantial finish and design as well as a studio monitor sound at louder levels. They are quickly becoming the new commercial standard for the audio industry.



CANNON C4

This 4" coaxial offers studio monitor fidelity, extended low frequency (4" passive radiator), high SPL for its size, and optional accessories.

This 4" Cannon coaxial is offered in two versions: the C4i (indoor) with a screw terminal block connector and the C4 with a marine grade cable gland. The C4 is IP55 and salt water resistant and comes with two feet of 16/2 gauge speaker wire in either black or white.



SPECIFICATIONS

Description: passive 4" coaxial with a 4" passive radiator

Bandwidth: 100 Hz - 18 kHz (-6 dB)

Max SPL: 111 dB SPL @ 1m with preset

Power: 200w (program), 100w (AES)

Directivity: 85° conical

Elements: (1) 4" coaxial with a 1" silk dome high frequency driver, (1) 4" passive radiator

Impedance: 8Ω

C4 Connectors: (1) marine grade cable gland with 2 feet of 16/2 gauge wire in black or white

C4i Connectors: (1) screw terminal block with input +/- and loop +/-

IP Rating: IP55 indoor/outdoor and salt water resistant

Rigging: (4) M6 points

Weight: 5.1 lbs / 2.3 kg

Construction: Finland birch ply (urea glue), matte salt and UV resistant polyurea coating, 316 stainless steel hardware, 3D spacer mesh fabric

Accessories: C-Clamp (wall, truss, mic stand, ceiling mounting), L-Bracket, Mounting Plate, Tube Mount, Active Speaker Stand and Tubes, Pole Mount Adaptor

Physical: 5.9" (150 mm) x 5.9" (150 mm) x 7" (180 mm)

Colors: stocking black and white, custom colors and fabrics available



CANNON C5

The C5's silk dome driver (like the C4 & C6) was built with a cooling design that enables high sound pressure levels, with improved sound quality, as well as consistency and durability over time. The enclosure also incorporates a rear-facing passive radiator extending the bass frequency response. These key features allow the C5 to provide the sound quality of a studio monitor.

The C5 has a 2-circuit switch allowing for a choice of two separate mixes with a 4-wire cable. Eight C5's can comfortably operate on a single cable. The C5 is also available in an install/indoor version, the C5i.



SPECIFICATIONS

Description: passive 5" coaxial with a 5" passive radiator

Bandwidth: 65 Hz - 18 kHz (-6 dB)

Max SPL: 113 dB SPL @ 1m with preset

Power: 240w (program), 120w (AES)

Directivity: 85° conical

Elements: (1) 5" coaxial with a 1" silk dome high frequency driver, (1) 5" passive radiator

Impedance: 16Ω

Connectors (C5): (2) NL4, 2-circuit switch, (1) Neutrik NDJ dummyPLUG

Connectors (C5i): (1) screw terminal block with input +/- and loop +/-

IP Rating: IP55 indoor/outdoor and salt water resistant

Rigging: (4) M6 points

Weight: 9.4 lbs / 4.3 kg

Construction: Finland birch plywood (urea glue), matte salt and UV resistant polyurea coating, 316 stainless steel hardware, 3D spacer mesh fabric

Accessories: C-Clamp (wall, truss, mic stand, ceiling mounting), L-Bracket, Mounting Plate, Tube Mount, Active Speaker Stand and Tubes, Pole Mount Adaptor

Physical: 7.5" (190 mm) x 7.5" (190 mm) x 8.2" (208 mm)

Colors: stocking black and white, custom colors and fabrics available



CANNON C6

The Cannon C6 has a 2-circuit switch allowing for a choice of two separate mixes with a 4-wire cable. Eight C6's can comfortably operate on a single cable. The C6 is also available in an install/indoor version, the C6i.



SPECIFICATIONS

Description: passive 6.5" coaxial with a 5" passive radiator

Bandwidth: 60 Hz - 18 kHz (-6 dB)

Max SPL: 114 dB SPL @ 1m with preset

Power: 240w (program), 120w (AES)

Directivity: 85° conical

Elements: (1) 6.5" coaxial with a 1" silk dome high frequency driver, (1) 5" passive radiator

Impedance: 16Ω

Connectors (C6): (2) NL4, 2-circuit switch, (1) Neutrik NDJ dummyPLUG

Connectors (C6i): (1) screw terminal block with input +/- and loop +/-

IP Rating: IP55 indoor/outdoor and salt water resistant

Rigging: (4) M6 points

Weight: 10.6 lbs / 4.8 kg

Construction: Finland birch plywood (urea glue), matte salt and UV resistant polyurea coating, 316 stainless steel hardware, 3D spacer mesh fabric

Accessories: C-Clamp (wall, truss, mic stand, ceiling mounting), L-Bracket, Mounting Plate, Tube Mount, Pole Mount Adaptor

Physical: 8.5" (216 mm) x 8.5" (216 mm) x 8.2" (208 mm)

Colors: stocking black and white, custom colors and fabrics available



CANNON C8

THE TOWER SERIES

HIGH SPL

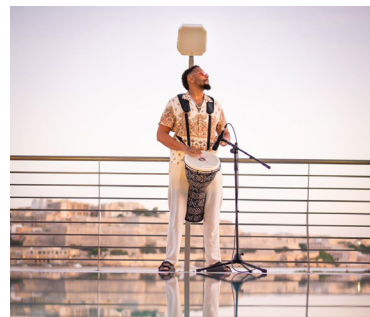
COMPACT

CARDIOID

LOW-FREQUENCY EXTENSION

The C8 is a powerful, full-range, high-fidelity loudspeaker. The C8 utilizes a coaxial 8" low-frequency driver with a compression driver and a 90° × 60° proprietary waveguide, this helps focalize the coverage where it is needed, reducing reflections from ceilings or overhangs. This model also has a 7-inch rear-facing passive radiator for extended low frequency.

These key build features are why the C8 sounds hi-fi and has a bandwidth of 55 Hz - 18 kHz and a maximum SPL of 120 dB.



The C8 is also available in an install/indoor version (C8i).



SPECIFICATIONS

Description: passive 8" coaxial with a 7" passive radiator

Bandwidth: 55 Hz - 18 kHz (-6 dB)

Max SPL: 120 dB SPL @ 1m with preset

Power: 400w (program), 200w (AES)

Directivity: 90° horizontal, 60° vertical

Elements: (1) 8" coaxial with a proprietary high frequency element, (1) 7" passive radiator

Impedance: 8Ω

Connectors (C8): (2) NL4, 2-circuit switch, (1) Neutrik NDL dummyPLUG

Connectors (C8i): (1) screw terminal block with input +/- and loop +/-

IP Rating: IP55 indoor/outdoor and salt water resistant

Rigging: (4) M6 points

Weight: 12 lbs / 5.4 kg

Construction: Finland birch plywood (urea glue), matte salt and UV resistant polyurea coating, 316 stainless steel hardware, 3D spacer mesh fabric

Accessories: C-Clamp (wall, truss, mic stand, ceiling mounting), L-Bracket, Mounting Plate, Tube Mount, Pole Mount Adaptor

Physical: 10.2" (260 mm) x 10.2" (260 mm) x 10.2" (260 mm)

Colors: stocking black and white, custom colors and fabrics available





TOWER LCC44

CARDIOID COLUMN LINE ARRAY

(4) 4" coaxials with (4) 1.4" compression drivers and waveguides (front-facing)

(3) 4" full range drivers (rear-facing)

The LCC44 is compact with unprecedented clarity and low frequency extension for a system of its size.

This model features Clarity Technology®, a proprietary high



frequency technology built upon coaxials with compression drivers.

Combine this with cardioid cancellation, each speaker has a musical, coherent, 120° dispersion pattern. The Towers can stand alone or

SPECIFICATIONS

Description: cardioid line array column featuring Clarity Technology® high frequency

Bandwidth: 105 Hz - 18 kHz (-6 dB)

Max SPL: 123 dB SPL @ 1m w/ preset (1 speaker)

Power: 800w (front) + 400w (rear) program, 400w (front) + 200w (rear) AES

Directivity: 120° horizontal, 5° top and bottom

Elements: (4) 4" coaxial each with a 1.4" compression driver, (3) 4" rear-facing full range drivers

Impedance: 16Ω front, 24Ω rear

Connectors: (4) NL4, 1+1- front, 2+2- rear, (3) Neutrik NDL dummyPLUGs

IP Rating: IP55 indoor/outdoor and salt water resistant

Rigging: proprietary rigging elements and fly bars -3°, 0°, +3°, +6°, +9°, (14) available M6 points

Weight: 22 lbs / 10 kg

Construction: Finland birch plywood (urea glue), structural stainless steel interior, matte salt and UV resistant polyurea coating, 316 stainless steel hardware, 3D spacer mesh fabric

Accessories: LCC44 Wall Bracket, Tower Rigging System, Fly Bar (Long & Short), Tower Tube Mount, Active Speaker Stand & Tubes

Physical: 17.8" (452 mm) x 6.3" (160 mm) x 9.5" (240 mm)

Colors: stocking black and white, custom colors and fabrics available



TOWER LCC84

CARDIOID COLUMN LINE ARRAY

(8) 4" coaxials with (8) 1.4" compression drivers and waveguides (front-facing)

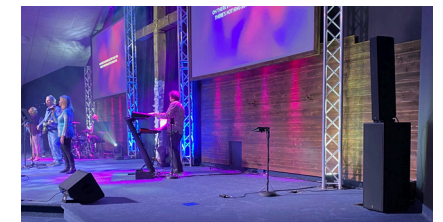
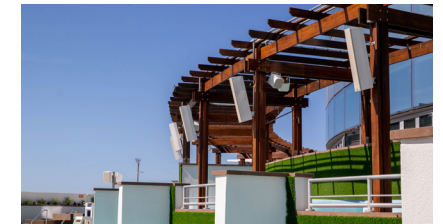
(6) 4" full range drivers (rear-facing)

The LCC84 is compact with unprecedented clarity and low frequency extension for a system of its size.

This model features Clarity Technology®, a proprietary high frequency technology built upon coaxials with compression drivers.

Combine this with cardioid cancellation, each speaker has a musical, coherent, 120° dispersion pattern.

The Towers can stand alone or with our proprietary rigging hardware to achieve long column arrays.



SPECIFICATIONS

Description: cardioid line array column featuring Clarity Technology® high frequency

Bandwidth: 105 Hz - 18 kHz (-6 dB)

Max SPL: 127 dB SPL @ 1m w/ preset (1 speaker)

Power: 1600w (front) + 800w (rear) program, 400w (front) + 200w (rear) AES

Directivity: 120° horizontal, 5° top and bottom

Elements: (8) 4" coaxial each with a 1.4" compression driver, (6) 4" rear-facing full range drivers

Impedance: 8Ω front, 12Ω rear

Connectors: (4) NL4, 1+1- front speakers, 2+2- rear speakers, (3) Neutrik NDL dummyPLUGs

IP Rating: IP55 indoor/outdoor and salt water resistant

Rigging: proprietary rigging elements and fly bars -3°, 0°, +3°, +6°, +9° (14) available M6 points

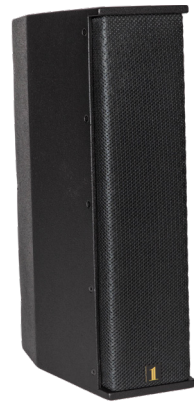
Weight: 43 lbs / 19.5 kg

Construction: Finland birch plywood (urea glue), structural stainless steel interior, matte salt and UV resistant polyurea coating, 316 stainless steel hardware, 3D spacer mesh fabric

Accessories: LCC84 Wall Bracket, Tower Rigging System, Fly Bar (Long & Short), Tower Tube Mount, Active Speaker Stand & Tubes

Physical: 34.6" (878 mm) x 6.3" (160 mm) x 9.5" (240 mm)

Colors: stocking black and white, custom colors and fabrics available



TOWER LF44

LOW-FREQUENCY EXTENSION COLUMN

The LF44 is meant to perform with the Tower LCC44 and/or the LCC84 as a low frequency extension.

(4) 4" low frequency drivers

The Tower LF44 is a low frequency column array loudspeaker, meant to perform with the Tower LCC44 or LCC84 as a low-frequency extension. The LF44 has the same construction and look as the LCC44, therefore all of the LCC44 accessories are applicable to the LF44. This module consists of four high-powered, low-frequency drivers, and has a bandwidth of 70 Hz - 200 Hz. The LF44



uses an independent amp channel with proprietary DSP.

The LF44 can be deployed in a flown array with the LCC44 and LCC84 or can be wall mounted independently.

SPECIFICATIONS

Description: Low frequency extension column array loudspeaker

Bandwidth: 70 Hz - 200 Hz (-6 dB preset depending)

Max SPL: 125 dB SPL @ 1m w/ preset (1 speaker)

Power: 560 watts (program), 280 watts (AES)

Directivity: Omnidirectional

Elements: (4) 4" low frequency drivers

Impedance: 8Ω

Connectors: (4) NL4, each allowing for audio inputs and linking, (3) Neutrik NDL dummyPLUGs

IP Rating: IP55 indoor/outdoor and salt water resistant

Rigging: proprietary rigging elements and fly bars -3°, 0°, +3°, +6°, +9°, (14) available M6 points

Weight: 17 lbs / 7.7 kg

Construction: Finland birch plywood (urea glue), structural stainless steel interior, polyurea, matte salt and UV resistant coating, 316 stainless steel hardware, 3D spacer mesh fabric

Accessories: LCC44 Wall Bracket, Tower Rigging System, Fly Bar (Long & Short), Tower Tube Mount, Active Speaker Stand & Tubes

Physical: 17.8" (452 mm) x 6.3" (160 mm) x 9.5" (240 mm)

Colors: stocking black and white, custom colors and fabrics available

THE CONTOUR SERIES

3-WAY

HORN-LOADED

LONG THROW

HIGH SPL

CONSTANT DIRECTIVITY

"This is not your average point source.
It sounds like a line array at 60 feet!"

Lou Mannarino, Designer & CEO, 1 SOUND





CONTOUR CT28



The Contour CT28 is a compact 3-way passive loudspeaker capable of delivering a max SPL of 140 dB. This is a loud, powerful speaker that sounds intimate at lower volumes.

The Contour is a horn-loaded point source that delivers a controlled 100° x 50° directional coverage down to 200 Hz, with a bass response to 70 Hz. This is a medium-to-long-throw point source that maintains its directionality in the far field.

The CT28's compact format and versatile accessories, makes it useful for small to large installations and live production audio.



SPECIFICATIONS

Description: passive, compact, 3-way loudspeaker, lightweight, horn-loaded point source

Bandwidth: 70 Hz - 18 kHz (-6 dB preset dependent)

Max SPL: 140 dB @ 1m with preset

Power: 1780w (program)

Directivity: 100° x 50°

Elements: (2) 8" low frequency drivers, (1) 4" mid-high coaxial with a 2.5" compression driver

Impedance: 8Ω

Connectors: (2) NL4, (1) Neutrik NDL dummyPLUG

IP Rating: IP55 indoor/outdoor and salt water resistant

Rigging: (8) M5 points, (4) M6 points

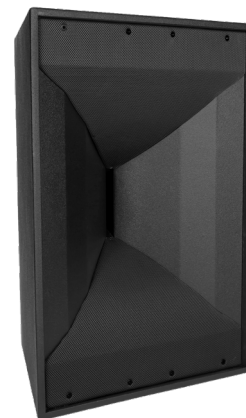
Weight: 44 lbs / 20 kg

Construction: Finland birch plywood (urea glue), matte salt and UV resistant polyurea coating, 316 stainless steel and aluminum hardware, 3D spacer mesh fabric

Accessories: CT28 Horizontal Mounting Bracket, CT28 Angle Bar, CT28 Wall Bracket, CT28 Rigging System, Tube Mount, Active Speaker Stand and Tubes, removable magnetic front grille [included]

Physical: 13.6" (345 mm) x 13.6" (345 mm) x 20" (510 mm)

Colors: stocking black and white, custom colors and fabrics available

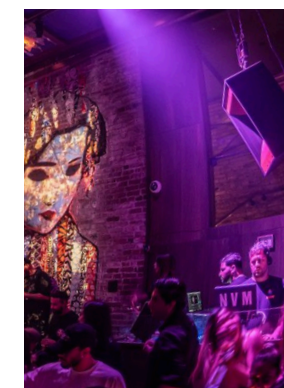


CONTOUR CT212



The Contour CT212 is a horn-loaded 3-way passive loudspeaker capable of delivering a maximum SPL of 145 dB. This is a powerful speaker that sounds full and present while still sounding intimate at lower volumes. This horn-loaded point source enclosure combines two 12" low frequency drivers with a coaxial mid-high compression driver, using a 4" plus a 2.5" voice coil. The CT212 delivers a controlled 100° x 50° dispersion pattern, maintaining constant directivity down to 200 Hz, as well as a bass response down to 55 Hz. It is a long-throw point-source that maintains its directivity in the far field.

This loudspeaker is useful for medium to large scale installations and live production audio. Various rigging options are available and offered in stainless steel 316, including the Contour Rigging System, which is applicable to both the CT212 and the CT28.



SPECIFICATIONS

Description: passive, compact, 3-way loudspeaker, lightweight, horn-loaded point source

Bandwidth: 55 Hz - 20 kHz (-6 dB preset dependent)

Max SPL: 145 dB @ 1m with preset

Power: 3600 watts LF + 380 watts MHF (program), 1800 watts LF + 190 watts MHF (AES)

Directivity: 100° x 50°

Elements: (2) 12" low frequency drivers, (1) 4" mid-high coaxial with a 2.5" compression driver

Impedance: 4Ω LF + 16 Ω MHF

Connectors: (2) NL4, (1) Neutrik NDL dummyPLUG

IP Rating: IP55 indoor/outdoor and salt water resistant

Rigging: (8) M5 points, (4) M6 points

Weight: 91.8 lbs / 41.6 kg

Construction: Finland birch plywood (urea glue), matte salt and UV resistant polyurea coating, 316 stainless steel and aluminum hardware, 3D spacer mesh fabric

Accessories: CT212 Horizontal Mounting Bracket, CT212 Wall Bracket, CT212 Rigging System, Tube Mount, Active Speaker Stand and Tubes, removable magnetic front grille [included]

Physical: 20.6" (525 mm) x 18.1" (460 mm) x 30.8" (783 mm)

Colors: stocking black and white, custom colors and fabrics available

SUBWOOFERS



MINI SUB MINISUB5



The MiniSUB5 is the ideal discreet subwoofer that offers substantial bass and a unique form factor.



This subwoofer is a 20" square and only 4.75" deep. This sleek, no-branding design, with a French cleat, makes this subwoofer perfect for hanging on a wall or floor placement.



SPECIFICATIONS

Description: passive, discreet subwoofer that offers substantial bass and a unique form factor

Bandwidth: 36 Hz - 160 Hz (-6 dB preset dependent)

Max SPL: 108 dB SPL @ 1m with preset

Power: 240w (program), 120w (AES)

Directivity: omnidirectional

Elements: (1) 5" low frequency driver

Impedance: 8Ω

Connectors: (1) screw terminal block with input +/- and loop +/-

IP Rating: IP55 indoor/outdoor and salt water resistant

Rigging: (4) M6 points, integrated French cleat

Weight: 17.7 lbs / 8 kg

Construction: Finland birch plywood (urea glue), matte salt and UV resistant polyurea coating, 316 stainless steel and aluminum hardware

Accessories: French cleat (wall hanging) [included], low profile feet (floor support) [included]

Physical: 4.7" (120 mm) x 20" (508 mm) x 20" (508 mm)

Colors: stocking black and white, custom colors available

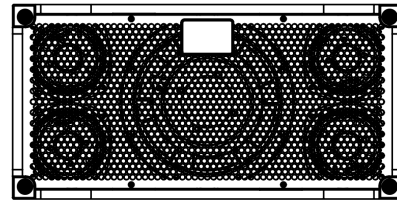


FLOOR SUB FSUB45

The Floor Sub is an ultra compact, fast-responding, and powerful lightweight subwoofer. Its unique design, with a clean look, enables more positioning options.



Four 5" low frequency drivers with a 10" passive radiator



SPECIFICATIONS

Description: passive, lightweight, fast responding and compact subwoofer designed for those hard-to-reach places
Bandwidth: 39 Hz - 140 Hz (-6 dB preset dependent)
Max SPL: 123 dB SPL @ 1m with preset
Power: 900w (program), 450w (AES)
Directivity: omnidirectional
Elements: (4) 5" low frequency drivers, (1) 10" passive radiator
Impedance: 8Ω
Connectors: (1) NL4
IP Rating: IP55 indoor/outdoor and salt water resistant
Rigging: floor supported - no rigging, no holes, no branding
Weight: 30.8 lbs / 14 kg
Construction: Finland birch plywood (urea glue), matte salt and UV resistant polyurea coating, 316 stainless steel hardware, 3D spacer mesh fabric
Accessories: a floor to place it
Physical: 11.7" (298 mm) x 7.4" (188 mm) x 23.5" (596 mm)
Colors: stocking black and white, custom colors available



WALL SUB WSUB45

The Wall Sub is an ultra compact, slim and powerful lightweight subwoofer. Its unique design allows this subwoofer to fit against a wall, inside a wall, suspended from a ceiling or recessed in a ceiling tile.



SPECIFICATIONS

Description: passive, lightweight, fast responding and compact subwoofer designed for those hard-to-reach places
Bandwidth: 39 Hz - 140 Hz (-6 dB preset dependent)
Max SPL: 123 dB SPL @ 1m with preset
Power: 900w (program), 450w (AES)
Directivity: omnidirectional
Elements: (4) 5" low frequency drivers, (1) 10" passive radiator
Impedance: 8Ω
Connectors: (1) NL4
IP Rating: IP55 indoor/outdoor and salt water resistant
Rigging: (12) M6 points
Weight: 25.1 lbs / 11.4 kg
Construction: Finland birch plywood (urea glue), matte salt and UV resistant polyurea coating, 316 stainless steel hardware, 3D spacer mesh fabric
Accessories: C-Clamps & Bridge Kit for wall and ceiling suspension, M6 Hanging Kit, Ceiling Tile Grille
Physical: 11.7" (298 mm) x 6.6" (167 mm) x 23.5" (596 mm)
Colors: stocking black and white, custom colors and fabrics available



WALL SUB WSUB45i

The WSUB45i (install version) has two French cleats built into the back of the cabinet with a screw terminal block connector for flush wall mounting. When mounted, this sub is only 6.6" off of the wall.



SPECIFICATIONS

Description: passive, lightweight, fast-responding and compact

Bandwidth: 39 Hz - 140 Hz (-6 dB preset dependent)

Max SPL: 123 dB SPL @ 1m with preset

Power: 900w (program), 450w (AES)

Directivity: omnidirectional

Elements: (4) 5" low frequency drivers, (1) 10" passive radiator

Impedance: 8Ω

Connectors: (1) screw terminal block with input +/- and loop +/-

IP Rating: IP55 indoor/outdoor and salt water resistant

Rigging: (12) M6 points, integrated French cleats

Weight: 25.1 lbs / 11.4 kg

Construction: Finland birch plywood (urea glue), matte salt and UV resistant polyurea coating, 316 stainless steel hardware, 3D spacer mesh fabric

Accessories: French cleat for horizontal and vertical hanging [included], recessed rubber feet [included], C-Clamp & Bridge Kit, M6 Hanging Kit, Ceiling Tile Grille

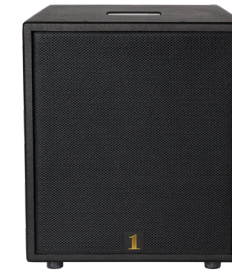
Physical: 11.7" (298 mm) x 6.6" (167 mm) x 23.5" (596 mm)

Colors: stocking black and white, custom colors and fabrics available



SUB10 600W

This is a high-powered, passive subwoofer with a single 10" driver. The SUB10 has a compact reflex design and a 2.5" voice coil. There are two recessed NL4 connectors for flush wall placement.



SPECIFICATIONS

Description: passive, compact, reflex bass unit

Bandwidth: 35 Hz - 125 Hz (-6 dB preset dependent)

Max SPL: 123 dB SPL @ 1m with preset

Power: 600w (program)

Directivity: omnidirectional

Elements: (1) 10" low frequency driver with a 2.5" voice coil

Impedance: 8Ω

Connectors: (2) recessed NL4

IP Rating: IP55 indoor/outdoor and salt water resistant

Rigging: (4) M8 points

Weight: 36.2 lbs / 16.4 kg

Construction: Finland birch plywood (urea glue), matte salt and UV resistant coating, 316 stainless steel hardware, 3D spacer mesh fabric

Accessories: Sub Pole Cup for an M20 screw-in pole or Active Speaker Tubes, M8 Hanging Kit, removable rubber feet [included]

Physical: 13.8" (350 mm) x 12.6" (320 mm) x 18.9" (480 mm)

Colors: stocking black and white, custom colors and fabrics available



SUB12

1200W



CSUB210

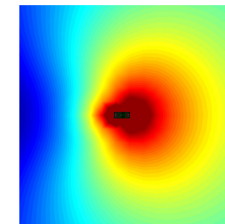
STEERABLE



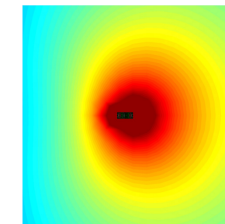
This is a high-powered, passive subwoofer with a single 12" driver. The SUB12 has a compact reflex design and a 4" voice coil. There are two recessed NL4 connectors for flush wall placement.



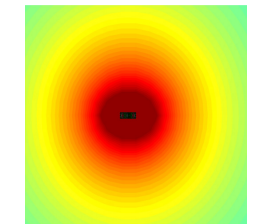
The CSUB210 is a double 10" multidirectional subwoofer that offers cardioid, sub cardioid (end fire) and omnidirectional modes. It can be placed parallel or perpendicular to a wall.



Cardioid @ 65 Hz



Sub Cardioid (end fire) @ 65 Hz



Omnidirectional @ 65 Hz

SPECIFICATIONS

Description: passive, compact, reflex bass unit
Bandwidth: 35 Hz - 150 Hz (-6 dB preset dependent)
Max SPL: 132 dB SPL @ 1m with preset
Power: 1200w (program)
Directivity: omnidirectional
Elements: (1) 12" neodymium low frequency driver with a 4" voice coil
Impedance: 8Ω
Connectors: (2) recessed NL4
IP Rating: IP55 indoor/outdoor and salt water resistant
Rigging: (4) M8 points
Weight: 46.3 lbs / 21 kg
Construction: Finland birch plywood (urea glue), matte salt and UV resistant polyurea coating, 316 stainless steel hardware, 3D spacer mesh fabric
Accessories: Sub Pole Cup for an M20 screw-in pole or Active Speaker Tubes, M8 Hanging Kit, removable rubber feet [included]
Physical: 15.8" (400 mm) x 14.2" (360 mm) x 20.5" (525 mm)
Colors: stocking black and white, custom colors and fabrics available

SPECIFICATIONS

Description: passive, multidirectional subwoofer (DSP dependent) with positioning options
Bandwidth: 35 Hz - 120 Hz (-6 dB preset dependent)
Max SPL: 128 dB SPL @ 1m with omni preset
Power: 600w + 600w (program), 300w +300w (AES)
Directivity: omnidirectional, sub cardioid (end fire) or cardioid with DSP presets
Elements: (2) 10" low frequency drivers
Impedance: (2) 8Ω, on a single 4-wire NL4
Connectors: (2) NL4, (1) Neutrik NDL dummyPLUG
IP Rating: IP55 indoor/outdoor and salt water resistant
Rigging: (8) M10 points
Weight: 65.4 lbs / 29.7 kg
Construction: Finland birch plywood (urea glue), matte salt and UV resistant polyurea coating, 316 stainless steel hardware, 3D spacer mesh fabric
Accessories: Sub Pole Cup, Active Speaker Tubes, removable rubber feet [included]
Physical: 12" (307 mm) x 16.5" (418 mm) x 31.5" (800 mm)
Colors: stocking black and white, custom colors and fabrics available



SUB310

TETRACOIL

This is a compact, fast-responding, and deep bass subwoofer with a max SPL of 137 dB. The SUB310 is a triple 10" subwoofer with tetracoil technology and is only 11.5" wide or tall. This sub has rigging points to stack multiple Tower columns on top of the vertically positioned subwoofer and has a pole cup accessory to place your favorite satellite.

(3) 10" drivers are stacked to create a line source for extra throw.



SPECIFICATIONS

Description: passive, line source subwoofer, ultra slim with (3) tetracoil technology drivers
Bandwidth: 32 Hz - 160 Hz (-6 dB preset dependent)
Max SPL: 137 dB SPL @ 1m with preset
Power: 2100w (program)
Directivity: omnidirectional
Elements: (3) 10" tetracoil technology low frequency drivers
Impedance: 3Ω
Connectors: (2) NL4, (1) Neutrik NDL dummyPLUG
IP Rating: IP55 indoor/outdoor and salt water resistant
Rigging: (12) M8 points, (6) M6 points for Tower Rigging System
Weight: 54 lbs / 24.5 kg
Construction: Finland birch plywood (urea glue), matte salt and UV resistant polyurea coating, 316 stainless steel hardware, 3D spacer mesh fabric
Accessories: Sub Pole Cup, Active Speaker Tubes, Tower Rigging System, M8 Hanging Kit, Outriggers, removable rubber feet [included]
Physical: 11.75" (300 mm) x 15.75" (400 mm) x 38" (970 mm)
Colors: stocking black and white, custom colors and fabrics available



CSUB610

STEERABLE

This subwoofer has a stacked triple 10" in the front and a stacked triple 10" in the rear. It is a multidirectional line source subwoofer that offers fully cardioid, sub cardioid (end fire) and omnidirectional modes. It can be placed parallel or perpendicular to a wall and is only 11.5" wide or tall.

When vertical this sub has rigging points to stack multiple Tower columns on top and has a pole cup accessory to place your favorite satellite.



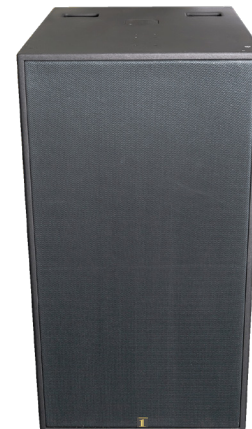
SPECIFICATIONS

Description: passive, line source subwoofer, ultra slim with (6) tetracoil technology drivers, multidirectional (DSP dependent)
Bandwidth: 32 Hz - 160 Hz (-6 dB preset dependent)
Max SPL: 140 dB SPL @ 1m with preset
Power: 2100w + 2100w (program)
Directivity: omnidirectional, sub cardioid (end fire) or cardioid with DSP presets
Elements: (6) 10" tetracoil technology low frequency drivers
Impedance: (2) 3Ω, on a single 4-wire NL4
Connectors: (2) NL4, (1) Neutrik NDL dummyPLUG
IP Rating: IP55 indoor/outdoor and salt water resistant
Rigging: (12) M8 points, (12) M6 points for Tower Rigging System
Weight: 108 lbs / 49 kg
Construction: Finland birch plywood (urea glue), matte salt and UV resistant polurea coating, 316 stainless steel hardware, 3D spacer mesh fabric
Accessories: Sub Pole Cup, Active Speaker Tubes, Tower Rigging System, Outriggers, removable rubber feet [included]
Physical: 11.75" (300 mm) x 30.9" (785 mm) x 38" (970 mm)
Colors: stocking black and white, custom colors and fabrics available



SUB215

TETRACOIL



SUB2112

BI-AMPED



The SUB215 is a fast-responding, deep bass subwoofer capable of producing a maximum SPL of 140 dB. This cabinet is equipped with (2) 15" low frequency drivers with the latest tetracoil technology. This subwoofer is deep, but also delivers clear and punchy upper bass. The SUB215 cabinet is only 17.7" (450 mm) wide when deployed vertically.

The SUB215 can be equipped with the Sub Pole Cup which allows you to deploy a CT28 on top using a 1 SOUND Active Speaker Tube, or to mount any other satellite speaker. This subwoofer is also equipped with rigging points in order to attach our proprietary Tower Rigging System, allowing the Tower LCC44 or LCC84 to be coupled on top with variable splay angles.



The SUB2112 is a 2-way bi-amped subwoofer. It produces a solid 25 Hz with an upper bass that is fast-responding, tight, and loud.



The subwoofer contains (1) 4000w 21" neodymium driver, and (2) 1800w 12" neodymium drivers, in a compact design. This is a powerful subwoofer with a max SPL of 137 dB.



SPECIFICATIONS

Description: passive, fast-responding, powerful, deep, and loud
Bandwidth: 30 Hz - 120 Hz (-6 dB preset dependent)
Max SPL: 140 dB SPL @ 1m with preset
Power: 3600 watts (program), 1800 watts (AES)
Directivity: omnidirectional
Elements: (2) 15" tetracoil technology low frequency drivers
Impedance: 4 Ω
Connectors: (2) NL4, (1) Neutrik NDL dummyPLUG
IP Rating: IP55 indoor/outdoor and salt water resistant
Rigging: (16) M8 points, (6) M6 points for Tower Rigging System
Weight: 133.8 lbs / 60.7 kg
Construction: Finland birch plywood (urea glue), matte salt and UV resistant polurea coating, 316 stainless steel hardware, 3D spacer mesh fabric
Accessories: Sub Pole Cup, Active Speaker Tubes, Tower Rigging System, Removable Caster Wheels Set, removable rubber feet [included]
Physical: 37.4" (950 mm) x 17.7" (450 mm) x 26.7" (680 mm)
Colors: stocking black and white, custom colors and fabrics available

SPECIFICATIONS

Description: passive, 2-way bi-amped subwoofer, fast-responding, powerful, and loud
Bandwidth: 25 Hz - 160 Hz (-6 dB preset dependent)
Max SPL: 137 dB @ 1m with preset
Power: 4000w + 3600w (program), 2000w + 1800w (AES)
Directivity: omnidirectional
Elements: (1) 21" low frequency driver, (2) 12" low frequency drivers
Impedance: 4 Ω + 4 Ω
Connectors: (2) NL4, (1) Neutrik NDL dummyPLUG
IP Rating: IP55 indoor/outdoor and salt water resistant
Rigging: (12) M8 points
Weight: 198 lbs / 90 kg
Construction: Finland birch plywood (urea glue), matte salt and UV resistant polyurea coating, 316 stainless steel hardware, 3D spacer mesh fabric
Accessories: Sub Pole Cup, Active Speaker Tubes, Tower Rigging System, Outriggers, removable rubber feet [included]
Physical: 43.3" (1100 mm) x 31.3" (795 mm) x 23.4" (594 mm)
Colors: stocking black and white, custom colors and fabrics available

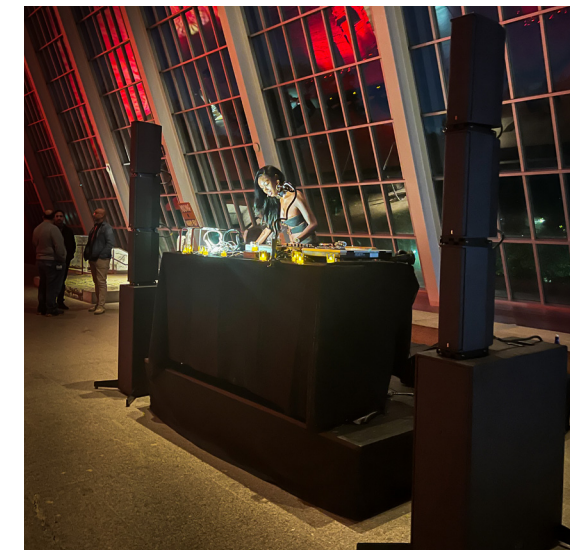
COMPLETE SYSTEMS



THE TOWER SYSTEMS

The Tower Systems are portable stereo line array systems made up of Tower loudspeakers with the SUB310 or CSUB610.

Tower Systems are modular because of the versatility of the Tower accessories and rigging points on the subwoofers.



THE CONTOUR SYSTEMS

The Contour Systems are portable constant directivity stereo systems made up of Contour 3-way point sources paired with either the bi-amped SUB2112 or the punchy and deep SUB215.

These are next-level powerful compact systems that can utilize the Contour Rigging System allowing for an up or down tilt of up to 20 degrees. These systems are perfect as a live production PA, for production companies, rental houses, and touring.



THE TOWER SYSTEMS

TOWER 1 SYSTEM

- (6) LCC44
 - (6) Tower Rigging System
- (2) CSUB610
 - (2) Subwoofer Outriggers (recommended)
- (2) Powersoft T604 Amplifiers with DSP
 - Dante available
- (4) 50' Speakon NL4 Speaker Cable
- (4) 1' Speakon NL4



TOWER 2 SYSTEM

- (2) LCC84
 - (2) Tower Rigging System
- (2) SUB310
 - (2) Subwoofer Outriggers (recommended)
- (2) Powersoft T604 Amplifiers with DSP
 - Dante Available
- (4) 50' Speakon NL4 Speaker Cable



TOWER 3 SYSTEM

- (2) LCC44
 - (2) Tower Rigging System
 - (2) Tower Tube Mounts
 - (2) 37" Active Speaker Tubes
- (2) SUB310 or SUB12
 - Sub Pole Cups
 - (2) Subwoofer Outriggers (recommended)
- (2) Powersoft T604 amplifiers with DSP
 - Dante Available
- (4) 50' Speakon NL4 Speaker Cable



THE CONTOUR SYSTEMS

CONTOUR 1 SYSTEM

- (2) Contour CT212
 - Contour rigging options available
- (2) SUB2112
 - (2) Removable Caster Wheels Sets: consisting of (2) 4" heavy duty swivel wheels, (2) 4" heavy duty wheels with lock, & (4) Caster Plates to be installed on the subwoofer
- (2) Powersoft T904 amplifiers with DSP
 - Dante Available
- (4) 50' Speakon NL4 Speaker Cable



CONTOUR 2 SYSTEM

- (2) Contour CT28
 - (2) Contour Rigging System
 - (2) Tube Mount
- (2) SUB215
 - (2) Sub Pole Cup
 - (2) Removable Caster Wheels Sets: consisting of (2) 4" heavy duty swivel wheels, (2) 4" heavy duty wheels with lock, & (4) Caster Plates to be installed on the subwoofer
 - (2) 16-inch Tubes or 37-inch Active Tubes
- (1) Powersoft T904 amplifiers with DSP
 - Dante Available
- (4) 50' Speakon NL4 Speaker Cable



ACCESSORIES

Panorama MS34

C-Clamp

This accessory is provided for ceiling or wall mounting of the MS34.

A 3/8" clinch nut is provided for using the clamp on a mic stand, speaker stand or truss clamp.



L-Bracket

This L-shaped bracket is for horizontal aiming of all C-Clamps.



Pole Mount Adaptor

This accessory comes with a 3/8" bolt and pole mount that attaches to the MS34 speaker to create a speaker stand mount with an industry-standard 35mm speaker pole.

- offered in black or white



All hardware is designed for weather protection, SS316 is recommended for harsher weather environments.

All accessories are stocked in black, white, and stainless steel 316 unless otherwise specified.

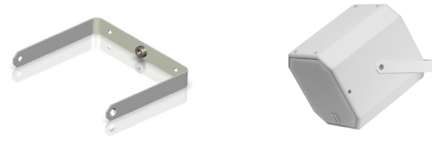
Cannons

C-Clamp

C4 / C5 / C6 / C8

This accessory is provided for ceiling mounting, suspending, or wall mounting the Cannons. Each model has a corresponding sized C-Clamp.

A 3/8" clinch nut is provided for using the clamp on a mic stand, speaker stand, truss clamp or suspending with a threaded rod.



L-Bracket

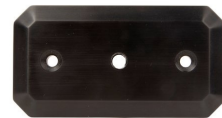
This L-shaped bracket is for horizontal aiming of all C-Clamps.



Mounting Plate

For all Cannons, this accessory is a 3/8" mounting plate that provides a center point for a mic stand, wall bracket, truss clamp, or eye-bolt. This is also used to attach the Tube Mount or Pole Mount Adaptor.

- offered in black or white



Pole Mount Adaptor

This accessory comes with a 3/8" bolt and pole cup that attaches to the Mounting Plate to create a speaker stand mount for any Cannon in the line.

- offered in black or white



Tube Mount

This mount enables the Contour and Cannon Series to be placed on our proprietary Active Tubes as well as industry-standard round speaker poles. It attaches to the Contour Rigging System or the Cannons Mounting Plate.



Active Floor Stand

This is a sleek active speaker stand. This accessory is comprised of a tube that has a Speakon NL4 at the bottom connected to another Speakon NL4 at the top, and a steel round base.

- steel tube & base, offered in black or white
- tube length: 70" (177 cm)



Towers

Tower Wall Bracket

LCC44 / LCC84

This bracket attaches to a Tower loudspeaker to mount it to a wall or ceiling. Each Tower model, the LCC44 and the LCC84, has a corresponding sized bracket.

- 180° horizontal tilt for aiming and side wall mounting
- 40° vertical tilt upward or downward
- strong and sturdy
- single person installation



Tower Long and Short Fly Bar

These fly bars allow for suspension and angling of all Tower loudspeakers with multiple angles. A second fly bar (long or short) can be used as a pull up for the bottom of the array. These Fly Bars are made from billeted structural aluminum.

- colors: anodized black or silver



Tower Rigging System

The rigging system comes with (2) plates made from billeted structural aluminum, (2) stainless steel M10x100 rigging pins and (12) M6x20 stainless steel screws. This system is used to attach a Tower loudspeaker to either another Tower, a subwoofer or a fly bar.

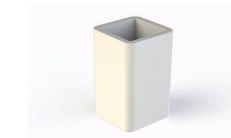
- colors: anodized black or silver



Tower Tube Mount

This mount enables a Tower speaker to be placed on our proprietary Active Tubes & industry-standard speaker poles. It attaches to the Tower Rigging System or to the speaker directly.

- attached to the Tower Rigging System, it enables (3) angle choices
- attached to a Tower directly, it offers a 0° angle



Active Floor Stand

This is a sleek active speaker stand. This accessory is comprised of a tube that has a Speakon NL4 at the bottom connected to another Speakon NL4 at the top, and a steel round base.

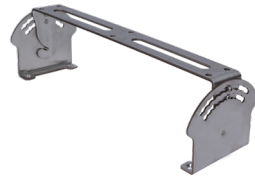
- steel tube & base, offered in black or white
- tube length: 70" (177 cm)



Contours

Horizontal Mounting Bracket CT28 / CT212

This bracket is for horizontal positioning, allowing for vertical aiming on a wall. It can also be used for ceiling mounting, facilitating both vertical and horizontal positioning.



CT28 Angle Bar

The Angle Bar attaches to the Horizontal Bracket in order to extend the tilt angle. It can either extend the tilt angle so the CT28 is flush to the wall or the ceiling to which it is mounted, or it can provide an angle as far as 75° away from the wall or ceiling.
- minimum tilt case: 15°, maximum tilt case: 75°



Contour Adjustable Rigging System CT28 / CT212

This Adjustable Rigging System attaches to the top and/or bottom of the Contour and allows for various rigging options such as hanging or attaching to a Tube Mount. The angle can be easily adjusted and set with the pin.



Contour Wall Bracket CT28 / CT212

This bracket attaches to the back of a Contour loudspeaker and mounts it to a wall. It allows for positioning on both the horizontal and vertical axis. The vertical positioning can go down to 30°.



Tube Mount

This mount enables the Contour and Cannon Series to be placed on our proprietary Active Tubes as well as industry-standard round speaker poles. It attaches to the Contour Rigging System or the Cannon Mounting Plate.



Active Floor Stand

This is a sleek active speaker stand. This accessory is comprised of a tube that has a Speakon NL4 at the bottom connected to another Speakon NL4 at the top, and a steel round base.
- steel tube & base, offered in black or white
- tube length: 70" (177 cm)



Subwoofers

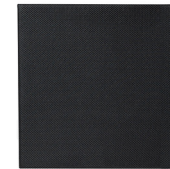
WSUB45 C-Clamps & Bridge Kit

This accessory comes with (2) C-Clamps, (1) single point bridge, and hardware to attach to the bridge.
- enables mounting to a wall or suspending from a ceiling
- can be used for both horizontal or vertical positioning
- hanging bridge provides the additional strength for a single point hang



Ceiling Tile Grille

This accessory is (1) ceiling tile grille 2'x2'. This grille fits in standard ceiling tile grids and is great when hanging subwoofers in the ceiling.
- ideal for hiding a sub in a ceiling
- can be upholstered with 1 SOUND fabric colors



Hanging Kit

This accessory comes with (4) adjustable RIZE wire ropes with locking clips and (4) forged eye bolts in either M6 or M8.
- M6 forged eye bolt set: ideal for hanging the WSUB45 from a beam inside of a ceiling
- M8 forged eye bolt set: ideal for hanging the SUB10, SUB12, & SUB310



Subwoofer Outriggers

This set of outriggers is meant to attach to the SUB310 or CSUB610 for secure placement on a floor. Each outrigger has adjustable feet for leveling. Two swing out 90° to be even with the edge of the cabinet, and the other two swing out 50°.

These outriggers are recommended if subs are in an environment where people are bumping into them or leaning on them, providing extra stability.
- Outriggers are made of zinc plated steel with powder coating.



Sub Pole Cup

Made from 4 mm steel, this Sub Pole Cup goes in various 1 SOUND subwoofers in order to attach a top speaker.

Special feature: this cup fits all 1 SOUND active tubes and industry-standard speaker poles that have an M20 screw-in bolt.



Active Speaker Tubes

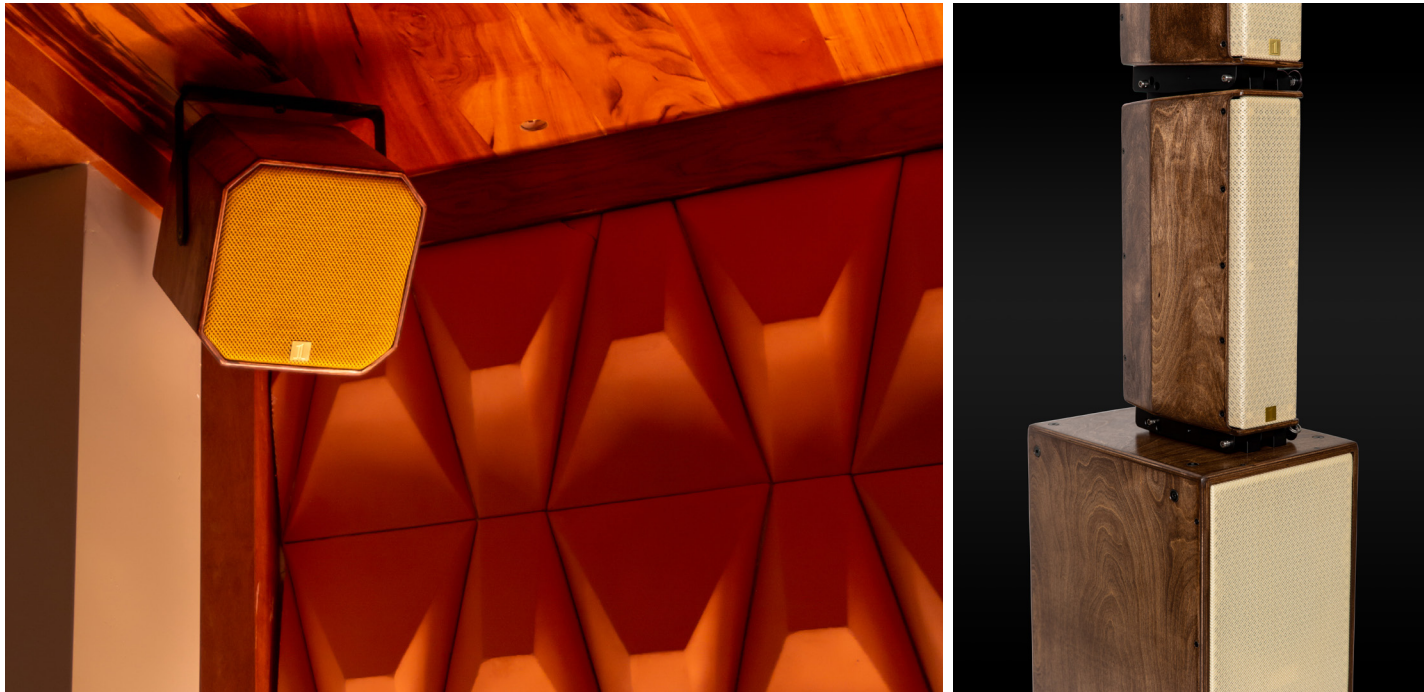
These active speaker tubes have a Speakon NL4 connector at each end, so you can achieve a sleek, clean look, connecting a top speaker to a sub.
- offered in black or white
- tube lengths:
145 cm (≈57")
95 cm (≈37.4")



1 SOUND Custom Shop

DRIVEN BY OUR PASSION FOR THE CRAFT

At 1 SOUND, we offer all of our products in custom color variations and natural wood finishes. We are happy to work with clients to ensure that their design goals are satisfied. Our local sourcing of building materials allows us to manufacture custom orders with a quicker turnaround. With 1 SOUND Custom Shop, you can have an aesthetically individualized audio system, hand built with the 1 SOUND signature sound.



CUSTOM COLORS

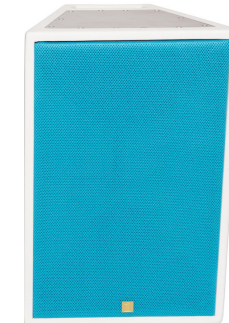
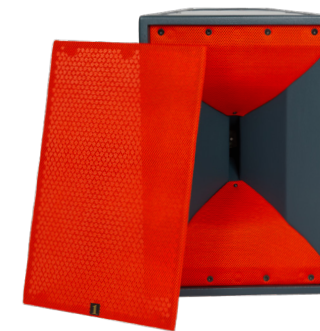


Want a custom color speaker?

We stock various fabric grille colors in order to bring you custom colored speakers quickly.

If you need something more specific, send us a sample or photo of the color you would like and we would love to create the perfect fit for you.

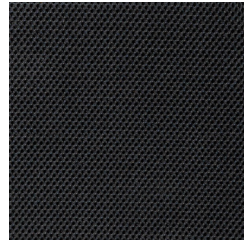
We stock only black and white speaker cabinets. For a custom color cabinet please allow at least 3-4 weeks lead time, and at least a month for natural wood finishes.



Please contact us with any questions.
www.1-sound.com/contact

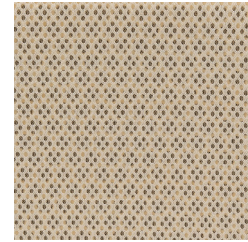
FABRICS IN STOCK

1 SOUND Black

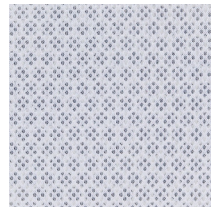


black

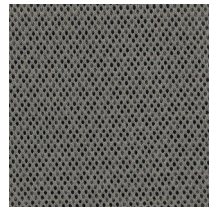
1 SOUND White



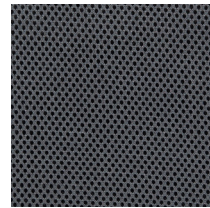
champagne



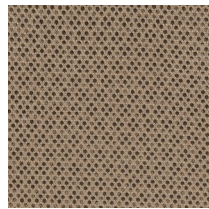
pure white



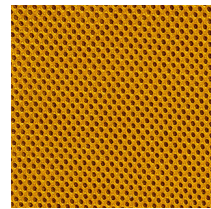
silver



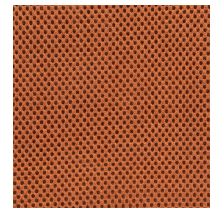
gray



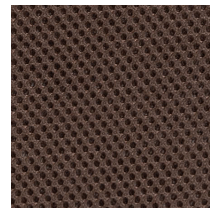
sandy beige



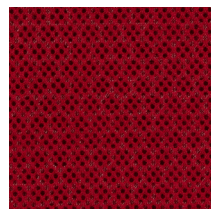
gold



copper



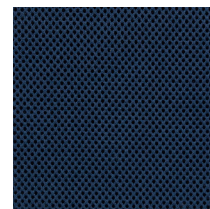
dark brown



red



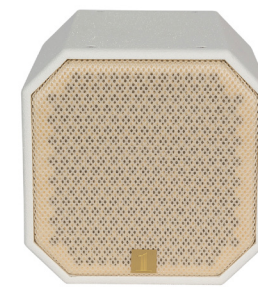
forest green



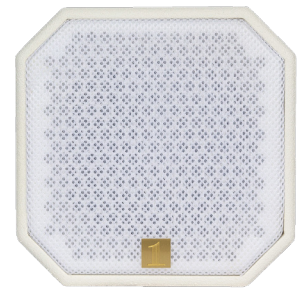
navy blue



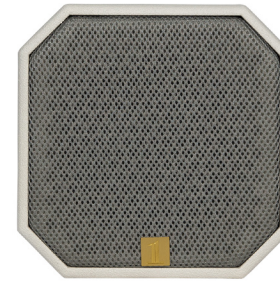
1



1



1



1



1



1



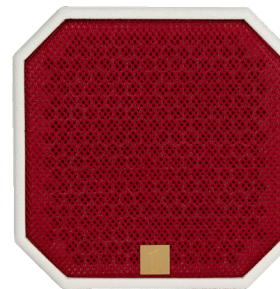
1



1



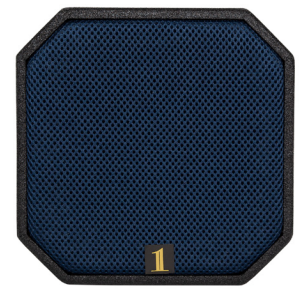
1



1



1



1

*Colors may appear slightly altered in this replication



