



Product Catalog



CONTENTS

ABOUT US	3
MONO + STEREO TECHNOLOGY	6
CANNON COAXIAL SERIES	8
TOWER COLUMN SERIES	13
LEVEL POINT SOURCE SERIES	17
CONTOUR POINT SOURCE SERIES	19
MONITORS	22
SUBWOOFERS	24
COMPLETE SYSTEMS	36
ACCESSORIES	41
AURALIS SOFTWARE	48
1 SOUND CUSTOM SHOP	49

ABOUT US

1 SOUND is an American-made, professional loudspeaker manufacturer backed by decades of industry experience. We aim to support and provide creative audio solutions for the needs of the commercial audio industry.

WHO WE ARE

The 1 SOUND team is a group of individuals motivated by the love for the craft. Lou Mannarino, the founder and designer of 1 SOUND, has had a 40 year career in the field as a musician, installer, and live audio engineer, which feeds the inspiration of 1 SOUND’s product designs.

WHERE WE ARE

All 1 SOUND speaker systems are manufactured in the USA, specifically Monmouth County, NJ. We use the best materials available from the United States and Italy. Manufacturing in the USA gives 1 SOUND the advantages of quick turnaround times, control over the supply chain and the pride of being built in the USA.

WHY WE ARE

1 SOUND brings over 40 years of experience to each caringly made loudspeaker design. We build using premium materials with highly trained craftsmen while maintaining strict quality control criteria. At 1 SOUND, we believe in having a hands-on approach in our building process as well as individualized customer support. Our goal is to support the professional audio industry with tools that are new to the market, bringing the latest technology to provide next generation solutions.





1 SOUND FOUNDER & DESIGNER, LOU MANNARINO

Lou has been working in the audio and music industry for over 40 years and started building speakers at 12 years old while mixing sound for school plays. Now his artist list includes Paul McCartney, Jay-Z, Bon Jovi and The New York Philharmonic. He has designed audio systems for The Metropolitan Museum of Art, Lincoln Center for the Arts, The Four Seasons Hotels and many other notable venues. Lou is also the founder of L&M Sound & Light, one of the first full service production companies in NYC.

Lou decided to start 1 SOUND because he needed audio solutions that did not already exist. This company is a culmination of his life's work and professional experience, motivated by the goal to provide innovative and unique tools for the professional audio industry.

Adamant about 1 SOUND products being made in America, Lou aims to use the finest materials for 1 SOUND designs. He believes in a hands on approach when it comes to building and stocking in the USA as well as in our individualized customer support.



C4 Prototype, New York Philharmonic

MONO + STEREO TECHNOLOGY

“The Mono + Stereo loudspeaker is simply outstanding to my ears, the mono imaging with a wide stereo spread is phenomenal.”

*Steve Remote, AuraSonic
Multiple Grammy Award Winning Engineer*

“The stereo image emanating from a single MS34 is unique, impressive and an absolute pleasure to experience.”

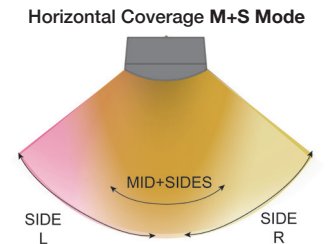
*Thomas Knauss, Principal Consultant, NV5
Audio Consultant & Designer for multiple Hard Rock Hotels & Casinos*



PANORAMA MS34



The Panorama MS34 is a two-channel, point source loudspeaker system. By utilizing Mono+Stereo mode with the MS Controller, it provides the listener with a mono sound field surrounded by the wide spatialization of stereo.



The M+S Controller is for the MS34 to operate in M+S mode. It is not necessary to operate the MS34 in mono (line source) mode. It is 19" rack mountable.

Utilizing our proprietary, analog Mono+Stereo Controller, the mono+stereo starts with L/R and divides it into a mono (mid) plus sides. From there, the M+S is arranged in this compact loudspeaker system preserving the true mono while surrounding the listener with a spacious stereo image.

As a stand alone mono loudspeaker (switch and preset dependent) it can become a horizontal or vertical line source helping to preserve its off axis frequency response while adding 5 dB of gain.

This loudspeaker is "one of a kind" as a front fill, under balcony, monitor and an installed distributed system.

SPECIFICATIONS

Description: M+S, 2 channel coaxial with an optional mono (line source) switch (DSP dependent)

Bandwidth: 95 Hz - 18 kHz (-6 dB)

Max SPL: 114 dB SPL @ 1m with preset

Power: 200w + 200w (program), 100w + 100w (AES)

Directivity: 100° conical (-6 dB)

Elements: (1) 4" coaxial w/ 1.4" HF compression driver, (2) 4" full range drivers, (2) 3.5" passive radiators

Impedance: 16Ω + 16Ω

Connectors: (2) NL4 plus a switch which changes M+S mode to mono (line source) mode

IP Rating: IP55 indoor/outdoor and salt water resistant

Rigging: (2) M6 points

Weight: 9.4 lbs / 4.3 kg

Construction: Finland birch plywood (phenolic resin), three coats of polyurea, matte salt and UV resistant coating, A4 316 stainless steel hardware, 3D spacer mesh fabric

Accessories: C-Clamp (wall, truss, mic stand, ceiling mounting), L-bracket, Tube Mount, Pole Mount Adaptor

Physical: 13.6" (346 mm) x 5.6" (144 mm) x 7.7" (197 mm)

Colors: stocking black and white, custom colors and fabrics available

THE CANNON COAXIALS

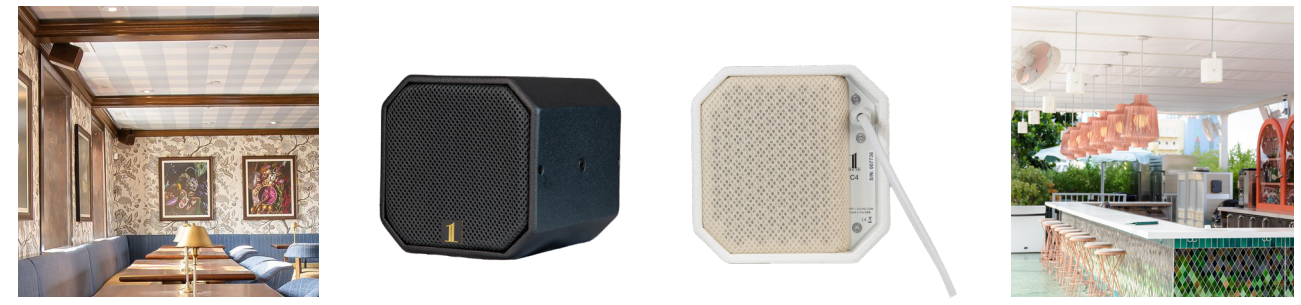
The Cannons are unique high-fidelity, full-range loudspeakers. Each model, C4, C5, C6, and C8, boasts extended low frequency remarkable for its size. These coaxial loudspeakers have a beautiful sound quality, where the mid-range is pronounced and projected. The Cannons have an elegant and substantial finish and design as well as a studio monitor sound at louder levels. They are quickly becoming the new commercial standard for the audio industry.



CANNON C4 *C4 / C4i / C4m*

This 4" coaxial offers studio monitor fidelity, extended low frequency (4" passive radiator), high SPL for its size, and optional accessories.

The C4 is available in three versions: the C4i (indoor) with a screw terminal block connector, the C4 with a marine grade cable gland and cable, and the C4m (marine) with a marine grade cable gland and all stainless steel A4 316 hardware. The C4 and C4m are IP55 and salt water resistant and come with 6 feet of 16/2 gauge speaker wire in either black or white.



SPECIFICATIONS

Description: passive 4" coaxial with a 4" passive radiator

Bandwidth: 100 Hz - 18 kHz (-6 dB)

Max SPL: 111 dB SPL @ 1m with preset

Power: 200w (program), 100w (AES)

Directivity: 85° conical

Elements: (1) 4" coaxial with a 1" silk dome high frequency driver, (1) 4" passive radiator

Impedance: 8Ω

C4 Connectors: (1) marine grade cable gland with 6 feet of 16/2 gauge wire in black or white

C4i Connectors: (1) screw terminal block with input +/- and loop +/-

C4m Connectors: (1) marine grade cable gland with 6 feet of 16/2 gauge wire in black or white

IP Rating: IP55 indoor/outdoor and salt water resistant

Rigging: (4) M6 points

Weight: 5.1 lbs / 2.3 kg

Construction: Finland birch plywood (phenolic resin), three coats of polyurea, matte salt and UV resistant coating, A4 316 stainless steel hardware, 3D spacer mesh fabric

Accessories: C-Clamp (wall, truss, mic stand, ceiling mounting), L-Bracket, Swivel Mount, Mounting Plate, Tube Mount, Active Speaker Stand and Tubes, Pole Mount Adaptor

Physical: 5.9" (150 mm) x 5.9" (150 mm) x 7" (180 mm)

Colors: stocking black and white, custom colors and fabrics available



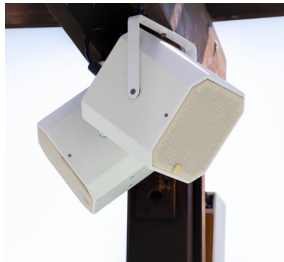
CANNON

C5

C5 / C5i / C5m

The C5's silk dome driver (like the C4 & C6) was built with a cooling design that enables high sound pressure levels, with improved sound quality, as well as consistency and durability over time. The enclosure also incorporates a rear-facing passive radiator extending the bass frequency response. These key features allow the C5 to provide the sound quality of a studio monitor.

The C5 has a 2-circuit switch allowing for a choice of two separate mixes with a 4-wire cable. The C5 is available in 3 versions: the C5 with the 2-circuit switch, the C5i with a screw terminal connector, and the C5m (marine) with stainless steel A4 316 hardware and marine grade cable gland and cable.



SPECIFICATIONS

Description: passive 5" coaxial with a 5" passive radiator

Bandwidth: 65 Hz - 18 kHz (-6 dB)

Max SPL: 113 dB SPL @ 1m with preset

Power: 240w (program), 120w (AES)

Directivity: 85° conical

Elements: (1) 5" coaxial with a 1" silk dome high frequency driver, (1) 5" passive radiator

Impedance: 16Ω

Connectors (C5): (2) NL4, 2-circuit switch

Connectors (C5i): (1) screw terminal block with input +/- and loop +/-

Connectors (C5m): (1) marine grade cable gland with 6 feet of 16/2 gauge wire in black or white

IP Rating: IP55 indoor/outdoor and salt water resistant

Rigging: (4) M6 points

Weight: 9.4 lbs / 4.3 kg

Construction: Finland birch plywood (phenolic resin), three coats of polyurea, matte salt and UV resistant coating, A4 316 stainless steel hardware, 3D spacer mesh fabric

Accessories: C-Clamp (wall, truss, mic stand, ceiling mounting), L-Bracket, Swivel Mount, Mounting Plate, Tube Mount, Active Speaker Stand and Tubes, Pole Mount Adaptor

Physical: 7.5" (190 mm) x 7.5" (190 mm) x 8.2" (208 mm)

Colors: stocking black and white, custom colors and fabrics available



CANNON

C6

C6 / C6i / C6m

This 6.5" coaxial offers studio monitor fidelity, extended low frequency (5" passive radiator), high SPL for its size, and optional accessories.

The Cannon C6 has a 2-circuit switch allowing for a choice of two separate mixes with a 4-wire cable. The C6 is available in 3 versions: the C6 with the 2-circuit switch, the C6i with a screw terminal connector, and the C6m (marine) with stainless steel A4 316 hardware and marine grade cable gland and cable.



SPECIFICATIONS

Description: passive 6.5" coaxial with a 5" passive radiator

Bandwidth: 60 Hz - 18 kHz (-6 dB)

Max SPL: 114 dB SPL @ 1m with preset

Power: 240w (program), 120w (AES)

Directivity: 85° conical

Elements: (1) 6.5" coaxial with a 1" silk dome high frequency driver, (1) 5" passive radiator

Impedance: 16Ω

Connectors (C6): (2) NL4, 2-circuit switch

Connectors (C6i): (1) screw terminal block with input +/- and loop +/-

Connectors (C6m): (1) marine grade cable gland with 6 feet of 16/2 gauge wire in black or white

IP Rating: IP55 indoor/outdoor and salt water resistant

Rigging: (4) M6 points

Weight: 10.6 lbs / 4.8 kg

Construction: Finland birch plywood (phenolic resin), three coats of polyurea, matte salt and UV resistant coating, A4 316 stainless steel hardware, 3D spacer mesh fabric

Accessories: C-Clamp (wall, truss, mic stand, ceiling mounting), L-Bracket, Swivel Mount, Mounting Plate, Tube Mount, Active Speaker Stand and Tubes, Pole Mount Adaptor

Physical: 8.5" (216 mm) x 8.5" (216 mm) x 8.2" (208 mm)

Colors: stocking black and white, custom colors and fabrics available

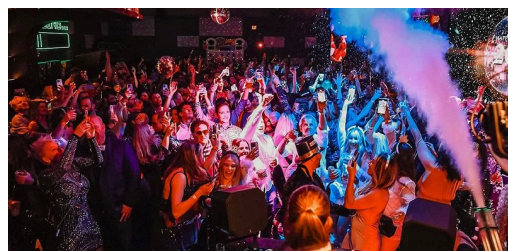


CANNON C8

C8 / C8i / C8m

The C8 is a powerful, full-range, high-fidelity loudspeaker. The C8 utilizes a coaxial 8" low-frequency driver with a compression driver and a 90° × 60° proprietary waveguide. This helps focalize the coverage where it is needed, reducing reflections from ceilings or overhangs. This model also has a 7-inch rear-facing passive radiator for extended low frequency.

These key build features are why the C8 sounds hi-fi and has a bandwidth of 55 Hz - 18 kHz and a maximum SPL of 120 dB.



SPECIFICATIONS

Description: passive 8" coaxial with a 7" passive radiator

Bandwidth: 55 Hz - 18 kHz (-6 dB)

Max SPL: 120 dB SPL @ 1m with preset

Power: 400w (program), 200w (AES)

Directivity: 90° horizontal, 60° vertical

Elements: (1) 8" coaxial with a proprietary high frequency element, (1) 7" passive radiator

Impedance: 8Ω

Connectors (C8): (2) NL4, 2-circuit switch

Connectors (C8i): (1) screw terminal block with input +/- and loop +/-

Connectors (C8m): (1) marine grade cable gland with 6 feet of 16/2 gauge wire in black or white

IP Rating: IP55 indoor/outdoor and salt water resistant

Rigging: (4) M6 points

Weight: 12 lbs / 5.4 kg

Construction: Finland birch plywood (phenolic resin), three coats of polyurea, matte salt and UV resistant coating, A4 316 stainless steel hardware, 3D spacer mesh fabric

Accessories: C-Clamp (wall, truss, mic stand, ceiling mounting), L-Bracket, Swivel Mount, Mounting Plate, Tube Mount, Active Speaker Stand and Tubes, Pole Mount Adaptor

Physical: 10.2" (260 mm) x 10.2" (260 mm) x 10.2" (260 mm)

Colors: stocking black and white, custom colors and fabrics available

THE TOWER SERIES

HIGH SPL

COMPACT

CARDIOID

LOW-FREQUENCY EXTENSION





TOWER LCC44

CARDIOID COLUMN LINE ARRAY

(4) 4” coaxials with (4) 1.4” compression drivers and waveguides (front-facing)

(3) 4” full range drivers (rear-facing)



The LCC44 is compact with unprecedented clarity and low frequency extension for a system of its size.

This model features Clarity Technology®, a proprietary high frequency technology built upon coaxials with compression drivers.

Combine this with cardioid cancellation, each speaker has a musical, coherent, 120° dispersion pattern.

The Towers can stand alone with optional installation accessories, be mounted to subs as portable systems, or be deployed in long column arrays with its rigging system.

SPECIFICATIONS

Description: cardioid line array column featuring Clarity Technology® high frequency
Bandwidth: 105 Hz - 18 kHz (-6 dB)
Max SPL: 123 dB SPL @ 1m w/ preset (1 speaker)
Power: 800w (front) + 400w (rear) program, 400w (front) + 200w (rear) AES
Directivity: 120° horizontal, 5° top and bottom
Elements: (4) 4” coaxial each with a 1.4” compression driver, (3) 4” rear-facing full range drivers
Impedance: 16Ω front, 24Ω rear
Connectors: (4) NL4, 1+1- front, 2+2- rear
IP Rating: IP55 indoor/outdoor and salt water resistant
Rigging: proprietary rigging elements and fly bars -3°, 0°, +3°, +6°, +9°, (14) available M6 points
Weight: 22 lbs / 10 kg
Construction: Finland birch plywood (phenolic resin), three coats of polyurea, matte salt and UV resistant coating, structural stainless steel interior, A4 316 stainless steel hardware, 3D spacer mesh fabric
Accessories: LCC44 Wall Bracket, Tower Rigging System, Fly Bar (Long & Short), Tower Tube Mount, Active Speaker Stand & Tubes
Physical: 17.8” (452 mm) x 6.3” (160 mm) x 9.5” (240 mm)
Colors: stocking black and white, custom colors and fabrics available



TOWER LCC84

CARDIOID COLUMN LINE ARRAY

(8) 4” coaxials with (8) 1.4” compression drivers and waveguides (front-facing)

(6) 4” full range drivers (rear-facing)

The LCC84 is compact with unprecedented clarity and low frequency extension for a system of its size.

This model features Clarity Technology®, a proprietary high frequency technology built upon coaxials with compression drivers.

Combine this with cardioid cancellation, each speaker has a musical, coherent, 120° dispersion pattern.

The Towers can stand alone with optional installation accessories, be mounted to subs as portable systems, or be deployed in long column arrays with its rigging system.



SPECIFICATIONS

Description: cardioid line array column featuring Clarity Technology® high frequency
Bandwidth: 105 Hz - 18 kHz (-6 dB)
Max SPL: 127 dB SPL @ 1m w/ preset (1 speaker)
Power: 1600w (front) + 800w (rear) program, 400w (front) + 200w (rear) AES
Directivity: 120° horizontal, 5° top and bottom
Elements: (8) 4” coaxial each with a 1.4” compression driver, (6) 4” rear-facing full range drivers
Impedance: 8Ω front, 12Ω rear
Connectors: (4) NL4, 1+1- front speakers, 2+2- rear speakers
IP Rating: IP55 indoor/outdoor and salt water resistant
Rigging: proprietary rigging elements and fly bars -3°, 0°, +3°, +6°, +9° (14) available M6 points
Weight: 43 lbs / 19.5 kg
Construction: Finland birch plywood (phenolic resin), three coats of polyurea, matte salt and UV resistant coating, structural stainless steel interior, A4 316 stainless steel hardware, 3D spacer mesh fabric
Accessories: LCC84 Wall Bracket, Tower Rigging System, Fly Bar (Long & Short), Tower Tube Mount, Active Speaker Stand & Tubes
Physical: 34.6” (878 mm) x 6.3” (160 mm) x 9.5” (240 mm)
Colors: stocking black and white, custom colors and fabrics available



TOWER LF44

LOW-FREQUENCY EXTENSION COLUMN

The LF44 is meant to perform with the Tower LCC44 and/or the LCC84 as a low frequency extension.

(4) 4" low frequency drivers

The Tower LF44 is a low frequency column array loudspeaker, meant to perform with the Tower LCC44 or LCC84 as a low-frequency extension. The LF44 has the same construction and look as the LCC44, therefore all of the LCC44 accessories are applicable to the LF44. This module consists of four high-powered, low-frequency drivers, and has a bandwidth of 70 Hz - 200 Hz.



The LF44 uses an independent amp channel with proprietary DSP.

The LF44 can be deployed in a flown array with the LCC44 and LCC84 or can be wall mounted independently.

SPECIFICATIONS

Description: Low frequency extension column array loudspeaker

Bandwidth: 70 Hz - 200 Hz (-6 dB preset depending)

Max SPL: 125 dB SPL @ 1m w/ preset (1 speaker)

Power: 560w (program), 280w (AES)

Directivity: Omnidirectional

Elements: (4) 4" low frequency drivers

Impedance: 8Ω

Connectors: (4) NL4, each allowing for audio inputs and linking

IP Rating: IP55 indoor/outdoor and salt water resistant

Rigging: proprietary rigging elements and fly bars -3°, 0°, +3°, +6°, +9°, (14) available M6 points

Weight: 17 lbs / 7.7 kg

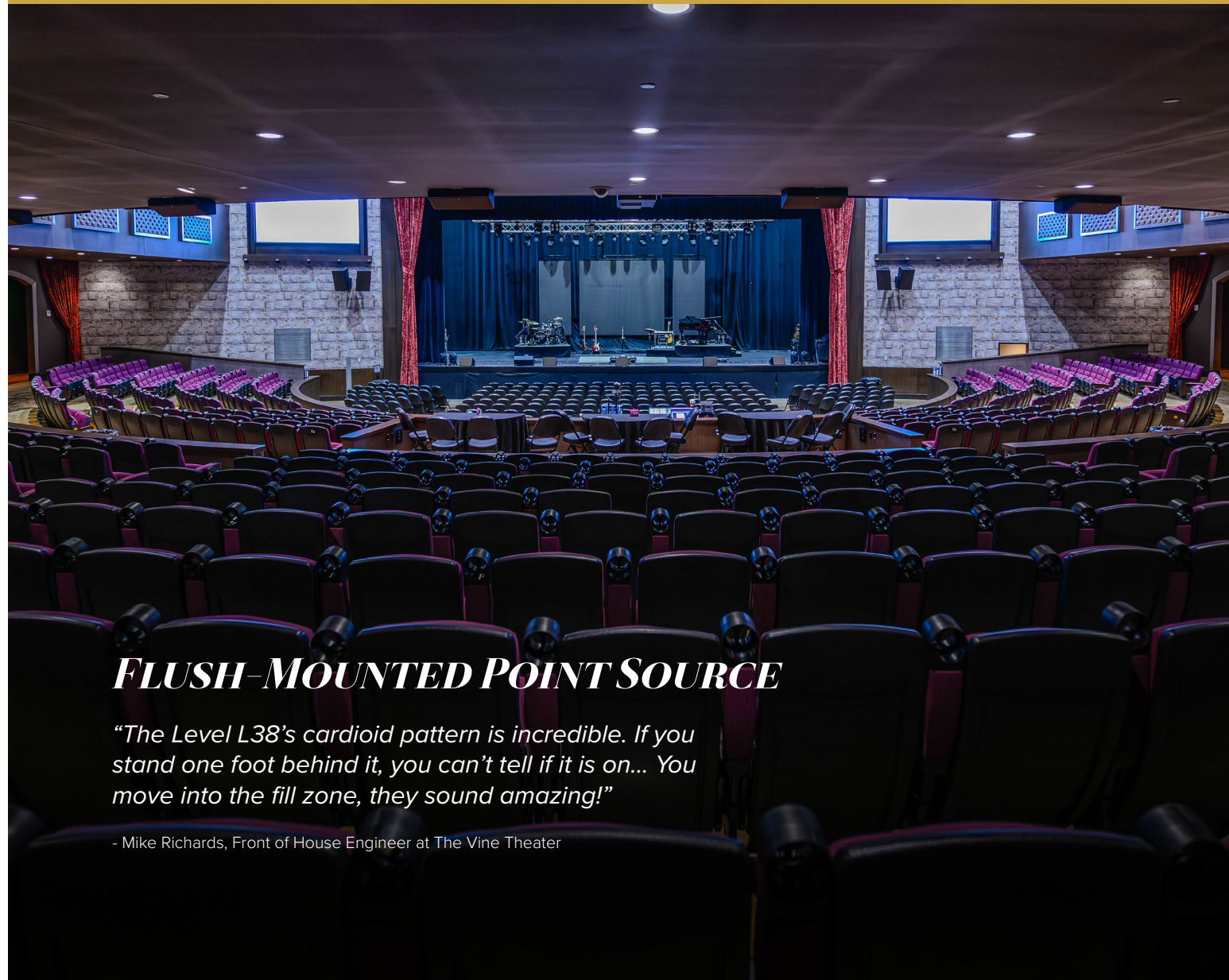
Construction: Finland birch plywood (phenolic resin), three coats of polyurea, matte salt and UV resistant coating, structural stainless steel interior, A4 316 stainless steel hardware, 3D spacer mesh fabric

Accessories: LCC44 Wall Bracket, Tower Rigging System, Fly Bar (Long & Short), Tower Tube Mount, Active Speaker Stand & Tubes

Physical: 17.8" (452 mm) x 6.3" (160 mm) x 9.5" (240 mm)

Colors: stocking black and white, custom colors and fabrics available

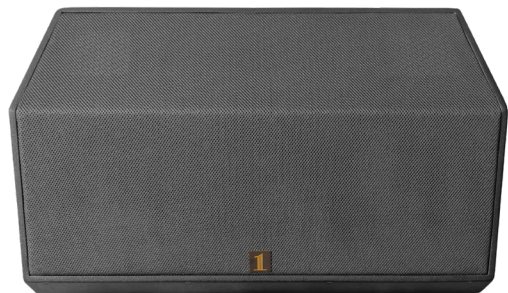
THE LEVEL SERIES



FLUSH-MOUNTED POINT SOURCE

"The Level L38's cardioid pattern is incredible. If you stand one foot behind it, you can't tell if it is on... You move into the fill zone, they sound amazing!"

- Mike Richards, Front of House Engineer at The Vine Theater



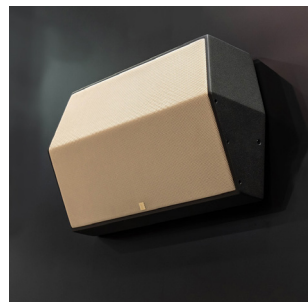
LEVEL L38

L38w (wall) / L38c (ceiling)

The L38 is a full range loudspeaker with a low-profile design. The L38 offers a new take on a full range loudspeaker, offering various possibilities for applications. The L38 is meant to be mounted flush on a wall or ceiling, standing only 8 inches from the surface, utilizing hardware that is built into the cabinet.

This sleek-looking loudspeaker is comprised of three 8-inch drivers, one of which is a coaxial with a proprietary progressive horn design that is rotatable, capable of a max SPL of 130 dB. This loudspeaker has an impactful sound with outstanding clarity and sonic intelligibility especially at a higher SPL range. The L38 was designed to have passive cardioid behavior, which means the mid-low frequencies will reduce a linear 8 dB off-axis of the speaker. This single-channel loudspeaker has a bandwidth down to 65 Hz, making it ideal as a stand-alone loudspeaker.

The progressive horn design and internal angle allow this loudspeaker to be mounted 8 to 15 feet high on a wall. If mounted on a wall, the dispersion covers almost 90 degrees below the loudspeaker.



PRELIMINARY SPECIFICATIONS

Description: Passive, 3-way, high-powered loudspeaker with cardioid behavior

Bandwidth: 65 Hz - 18 kHz (-6 dB preset dependent)

Max SPL: 130 dB @ 1m with preset

Power: 2400w (program), 1200w (AES)

Directivity: 80° vertical (-30°/+50° with respect to the baffle) × 80° to 40° H (progressive)

Elements: (2) 8" low frequency drivers, (1) 8" coaxial driver with 3" plus 2" voice coils

Impedance: 8Ω

Connectors: (2) NL4

IP Rating: IP55 indoor/outdoor and salt water resistant

Rigging: (2) M6 points (only for included bracket), (4) M8 points

Weight: 40 lbs / 18.2 kg

Construction: Finland birch plywood (phenolic resin), three coats of polyurea, matte salt and UV resistant coating, A4 316 stainless steel hardware, 3D spacer mesh fabric

Accessories: Recessed Mounting Bracket [included], M8 Hanging Kit

Physical: 27.6" (700 mm) x 16.1" (408 mm) x 8" (204 mm)

Colors: stocking black and white, custom colors and fabrics available

THE CONTOUR SERIES

3-WAY

HORN-LOADED

LONG THROW

HIGH SPL

CONSTANT DIRECTIVITY

“Reception to the new 1 SOUND system has been overwhelmingly positive! Traveling artists and sound engineers have appreciated the even coverage and sonic clarity of the new system.”

- Sean Pedrick, Technical Director, Levoy Theatre





CONTOUR CT28



The Contour CT28 is a compact 3-way passive loudspeaker capable of delivering a max SPL of 140 dB. This is a loud, powerful speaker that sounds intimate at lower volumes.

The Contour is a horn-loaded point source that delivers a controlled 100° x 50° constant directional coverage down to 200 Hz, with a bass response to 70 Hz. This is a medium-to-long-throw point source that maintains its directionality in the far field.

The CT28's compact format and versatile accessories, makes it useful for small to large installations and live production audio.



SPECIFICATIONS

Description: passive, compact, 3-way loudspeaker, lightweight, horn-loaded point source

Bandwidth: 70 Hz - 18 kHz (-6 dB preset dependent)

Max SPL: 140 dB @ 1m with preset

Power: 1780w (program)

Directivity: 100° x 50°

Elements: (2) 8" low frequency drivers, (1) 4" mid-high coaxial with a 2.5" compression driver

Impedance: 8Ω

Connectors: (2) NL4

IP Rating: IP55 indoor/outdoor and salt water resistant

Rigging: (8) M5 points, (4) M6 points

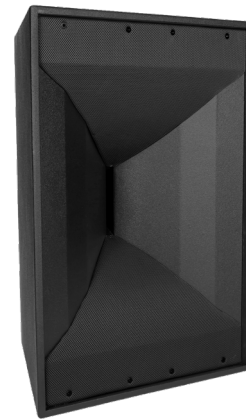
Weight: 44 lbs / 20 kg

Construction: Finland birch plywood (phenolic resin), three coats of polyurea, matte salt and UV resistant coating, A4 (316) stainless steel and powder-coated steel hardware, 3D spacer mesh fabric

Accessories: CT28 Horizontal Mounting Bracket, CT28 Yoke, CT28 Angle Bar, CT28 Wall Bracket, CT28 Fly Bar, CT28 Rigging System, Tube Mount, Active Speaker Stand and Tubes, removable magnetic front grille [included]

Physical: 13.6" (345 mm) x 13.6" (345 mm) x 20" (510 mm)

Colors: stocking black and white, custom colors and fabrics available



CONTOUR CT212



The Contour CT212 is a horn-loaded 3-way passive loudspeaker capable of delivering a maximum SPL of 145 dB. This is a powerful speaker that sounds full and present while still sounding intimate at lower volumes. This horn-loaded point source enclosure combines two 12" low frequency drivers with a coaxial mid-high compression driver, using a 4" plus a 2.5" voice coil. The CT212 delivers a controlled 100° x 50° dispersion pattern, maintaining constant directivity down to 200 Hz, as well as a bass response down to 55 Hz. It is a long-throw point source that maintains its directivity in the far field.

This loudspeaker is useful for medium to large scale installations and live production audio. Various rigging options are available and offered in A4 316 stainless steel, including the Contour Rigging System, which is applicable to both the CT212 and the CT28.



SPECIFICATIONS

Description: passive, compact, 3-way loudspeaker, lightweight, horn-loaded point source

Bandwidth: 55 Hz - 20 kHz (-6 dB preset dependent)

Max SPL: 145 dB @ 1m with preset

Power: 3600w LF + 380w MHF (program), 1800w LF + 190w MHF (AES)

Directivity: 100° x 50°

Elements: (2) 12" low frequency drivers, (1) 4" mid-high coaxial with a 2.5" compression driver

Impedance: 4Ω LF + 16Ω MHF

Connectors: (2) NL4

IP Rating: IP55 indoor/outdoor and salt water resistant

Rigging: (8) M5 points, (4) M6 points

Weight: 91.8 lbs / 41.6 kg

Construction: Finland birch plywood (phenolic resin), three coats of polyurea, matte salt and UV resistant coating, A4 (316) stainless steel and powder-coated steel hardware, 3D spacer mesh fabric

Accessories: CT212 Horizontal Mounting Bracket, CT212 Wall Bracket, CT212 Fly Bar, CT212 Rigging System, Tube Mount, Active Speaker Stand and Tubes, removable magnetic front grille [included]

Physical: 20.6" (525 mm) x 18.1" (460 mm) x 30.8" (783 mm)

Colors: stocking black and white, custom colors and fabrics available

THE MONITOR SERIES

PROGRESSIVE HORN HIGH-POWERED 3-WAY CARDIOID BEHAVIOR HIGH SPL

“With the CM38, there is no volume bleeding off the stage. I can have the stage levels at over 115 dB clean and stable.

The control and isolation of these monitors is amazing. This wedge is a game changer in our industry. Every guest engineer who has come in and seen them has been blown away by them.”

- Mike Richards, Front of House Engineer at The Vine Theater

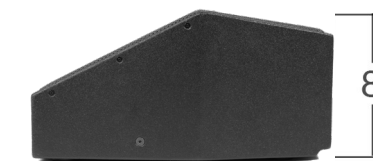
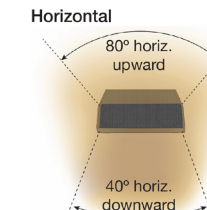
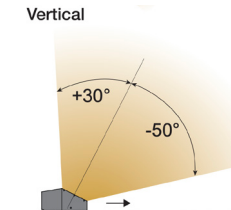
MONITOR CM38 *CARDIOID*



The CM38 is a high-performance, low-profile stage monitor with a passive three-way system that generates a cardioid directivity pattern. It is equipped with two 8" tetracoil woofers, plus a central 8" coaxial transducer with a 3" voice coil for the low-frequency element and a 2" voice coil for the high-frequency element.

Its progressive horn design offers excellent coherence of attenuation over distance between the high end and the low end of the spectrum. This creates a diffusion pattern that goes from 80° for a listener standing near or above the monitor, down to 40° as it throws far across the stage.

The CM38 has passive cardioid behavior, musically canceling out about 8 dB of mid-low frequencies on the sides and behind the speaker in its off-axis response. This results in a cleaner sound environment past the monitor and also maintains its pronounced high frequency towards the sides of the monitor. This floor monitor delivers a tight, punchy sound and clear intelligibility to the listener while achieving outstanding SPL with respect to its size.



PRELIMINARY SPECIFICATIONS

Description: passive, 3-way, cardioid floor monitor

Bandwidth: 70 Hz - 18 kHz (-6 dB preset dependent)

Max SPL: 130 dB @ 1m with preset

Power: 1400w LF + 800w MF+HF (program), 700w LF + 400w MF+HF (AES)

Directivity: 80° V (+30°/-50°) × 80° to 40° H (progressive)

Elements: (2) 8" low frequency drivers, (1) 8" coaxial driver with 3" plus 2" voice coils

Impedance: 8Ω + 8Ω

Connectors: (2) NL4

IP Rating: IP55 indoor/outdoor and salt water resistant

Rigging: (2) M6 points (only for bracket accessory), (4) M8 points

Weight: 40 lbs / 18.2 kg

Construction: Finland birch plywood (phenolic resin), three coats of polyurea, matte salt and UV resistant coating, A4 316 stainless steel, 3D spacer mesh fabric

Accessories: Recessed Mounting Bracket

Physical: 27.6" (700 mm) x 16.1" (408 mm) x 8" (204 mm)

Colors: stocking black and white, custom colors and fabrics available

SUBWOOFERS



MINI SUB MINISUB5



The MiniSUB5 is the ideal discreet subwoofer that offers substantial bass and a unique form factor.



This subwoofer is a 20" square and only 4.75" deep. This sleek, no-branding design, with a French cleat, makes this subwoofer perfect for hanging on a wall or for floor placement.



SPECIFICATIONS

Description: passive, discreet subwoofer that offers substantial bass and a unique form factor

Bandwidth: 36 Hz - 160 Hz (-6 dB preset dependent)

Max SPL: 108 dB SPL @ 1m with preset

Power: 240w (program), 120w (AES)

Directivity: omnidirectional

Elements: (1) 5" low frequency driver

Impedance: 8Ω

Connectors: (1) screw terminal block with input +/- and loop +/-

IP Rating: IP55 indoor/outdoor and salt water resistant

Rigging: (4) M6 points, integrated French cleat

Weight: 17.7 lbs / 8 kg

Construction: Finland birch plywood (phenolic resin), three coats of polyurea, matte salt and UV resistant coating, A4 316 stainless steel and aluminum hardware, 3D spacer mesh fabric

Accessories: French cleat for wall hanging [included], low profile feet for floor support [included]

Physical: 4.7" (120 mm) x 20" (508 mm) x 20" (508 mm)

Colors: stocking black and white, custom colors available



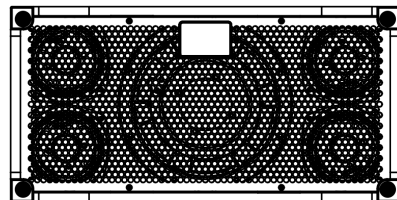
FLOOR SUB

FSUB45

The Floor Sub is an ultra compact, fast responding, powerful, and lightweight subwoofer. Its unique design, with a clean look, enables more positioning options.



Four 5" low frequency drivers with a 10" passive radiator



SPECIFICATIONS

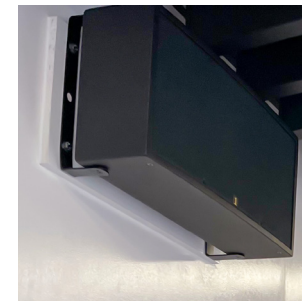
Description: passive, lightweight, fast responding and compact subwoofer designed for those hard-to-reach places
Bandwidth: 39 Hz - 140 Hz (-6 dB preset dependent)
Max SPL: 123 dB SPL @ 1m with preset
Power: 900w (program), 450w (AES)
Directivity: omnidirectional
Elements: (4) 5" low frequency drivers, (1) 10" passive radiator
Impedance: 8Ω
Connectors: (1) NL4
IP Rating: IP55 indoor/outdoor and salt water resistant
Rigging: floor supported - no rigging, no holes, no branding
Weight: 30.8 lbs / 14 kg
Construction: Finland birch plywood (phenolic resin), three coats of polyurea, matte salt and UV resistant coating, A4 316 stainless steel hardware, 3D spacer mesh fabric
Accessories: a floor to place it
Physical: 11.7" (298 mm) x 7.4" (188 mm) x 23.5" (596 mm)
Colors: stocking black and white, custom colors available



WALL SUB

WSUB45

The Wall Sub is an ultra compact, slim, powerful, and lightweight subwoofer. Its unique design allows this subwoofer to fit against a wall, inside a wall, suspended from a ceiling or recessed in a ceiling tile.



SPECIFICATIONS

Description: passive, lightweight, fast responding and compact
Bandwidth: 39 Hz - 140 Hz (-6 dB preset dependent)
Max SPL: 123 dB SPL @ 1m with preset
Power: 900w (program), 450w (AES)
Directivity: omnidirectional
Elements: (4) 5" low frequency drivers, (1) 10" passive radiator
Impedance: 8Ω
Connectors: (1) NL4
IP Rating: IP55 indoor/outdoor and salt water resistant
Rigging: (12) M6 points
Weight: 25.1 lbs / 11.4 kg
Construction: Finland birch plywood (phenolic resin), three coats of polyurea, matte salt and UV resistant coating, A4 316 stainless steel hardware, 3D spacer mesh fabric
Accessories: C-Clamps & Bridge Kit for wall and ceiling suspension, M6 Hanging Kit, Ceiling Tile Grille
Physical: 11.7" (298 mm) x 6.6" (167 mm) x 23.5" (596 mm)
Colors: stocking black and white, custom colors and fabrics available



WALL SUB WSUB45i

The WSUB45i (install version) has two French cleats built into the back of the cabinet with a screw terminal block connector for flush wall mounting horizontally or vertically. When mounted, this sub is only 6.6” off of the wall.



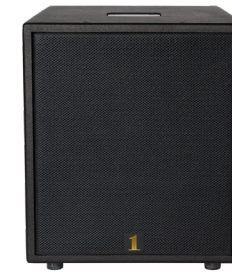
SPECIFICATIONS

Description: passive, lightweight, fast-responding and compact
Bandwidth: 39 Hz - 140 Hz (-6 dB preset dependent)
Max SPL: 123 dB SPL @ 1m with preset
Power: 900w (program), 450w (AES)
Directivity: omnidirectional
Elements: (4) 5” low frequency drivers, (1) 10” passive radiator
Impedance: 8Ω
Connectors: (1) screw terminal block with input +/- and loop +/-
IP Rating: IP55 indoor/outdoor and salt water resistant
Rigging: (12) M6 points, integrated French cleats
Weight: 25.1 lbs / 11.4 kg
Construction: Finland birch plywood (phenolic resin), three coats of polyurea, matte salt and UV resistant coating, A4 316 stainless steel hardware, 3D spacer mesh fabric
Accessories: French cleat for horizontal and vertical hanging [included], recessed rubber feet [included], C-Clamp & Bridge Kit, M6 Hanging Kit, Ceiling Tile Grille
Physical: 11.7” (298 mm) x 6.6” (167 mm) x 23.5” (596 mm)
Colors: stocking black and white, custom colors and fabrics available



SUB10 *600w*

This is a high-powered, passive subwoofer with a single 10” driver. The SUB10 has a compact reflex design and a 2.5” voice coil. There are two recessed NL4 connectors for flush wall placement.



SPECIFICATIONS

Description: passive, compact, reflex bass unit
Bandwidth: 35 Hz - 125 Hz (-6 dB preset dependent)
Max SPL: 123 dB SPL @ 1m with preset
Power: 600w (program)
Directivity: omnidirectional
Elements: (1) 10” low frequency driver with a 2.5” voice coil
Impedance: 8Ω
Connectors: (2) recessed NL4
IP Rating: IP55 indoor/outdoor and salt water resistant
Rigging: (4) M8 points
Weight: 36.2 lbs / 16.4 kg
Construction: Finland birch plywood (phenolic resin), three coats of polyurea, matte salt and UV resistant coating, A4 316 stainless steel hardware, 3D spacer mesh fabric
Accessories: Sub Pole Cup for an M20 screw-in pole or Active Speaker Tubes, M8 Hanging Kit, removable rubber feet [included]
Physical: 13.8” (350 mm) x 12.6” (320 mm) x 18.9” (480 mm)
Colors: stocking black and white, custom colors and fabrics available



SUB12

1200W



This is a high-powered, passive subwoofer with a single 12” driver. The SUB12 has a compact reflex design and a 4” voice coil. There are two recessed NL4 connectors for flush wall placement.



SPECIFICATIONS

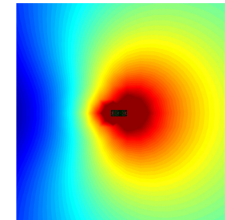
Description: passive, compact, reflex bass unit
Bandwidth: 35 Hz - 150 Hz (-6 dB preset dependent)
Max SPL: 132 dB SPL @ 1m with preset
Power: 1200w (program)
Directivity: omnidirectional
Elements: (1) 12” neodymium low frequency driver with a 4” voice coil
Impedance: 8Ω
Connectors: (2) recessed NL4
IP Rating: IP55 indoor/outdoor and salt water resistant
Rigging: (4) M8 points
Weight: 46.3 lbs / 21 kg
Construction: Finland birch plywood (phenolic resin), three coats of polyurea, matte salt and UV resistant coating, A4 316 stainless steel hardware, 3D spacer mesh fabric
Accessories: Sub Pole Cup for an M20 screw-in pole or Active Speaker Tubes, M8 Hanging Kit, removable rubber feet [included]
Physical: 15.8” (400 mm) x 14.2” (360 mm) x 20.5” (525 mm)
Colors: stocking black and white, custom colors and fabrics available



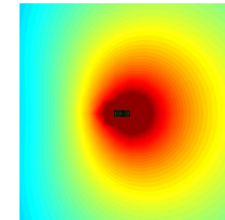
CSUB210

STEERABLE

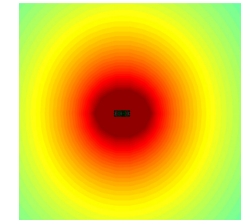
The CSUB210 is a double 10” multidirectional subwoofer that offers cardioid, sub cardioid (end fire) and omnidirectional modes. It can be placed parallel or perpendicular to a wall.



Cardioid @ 65 Hz



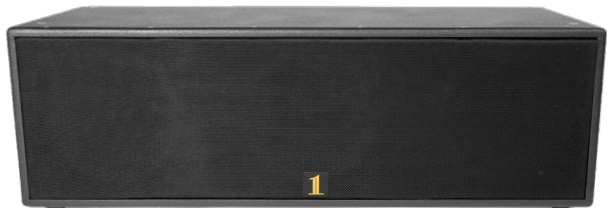
Sub Cardioid (end fire) @ 65 Hz



Omnidirectional @ 65 Hz

SPECIFICATIONS

Description: passive, multidirectional subwoofer (DSP dependent) with positioning options
Bandwidth: 35 Hz - 120 Hz (-6 dB preset dependent)
Max SPL: 128 dB SPL @ 1m with omni preset
Power: 600w + 600w (program), 300w +300w (AES)
Directivity: omnidirectional, sub cardioid (end fire) or cardioid with DSP presets
Elements: (2) 10” low frequency drivers
Impedance: (2) 8Ω, on a single 4-wire NL4
Connectors: (2) NL4
IP Rating: IP55 indoor/outdoor and salt water resistant
Rigging: (8) M10 points
Weight: 65.4 lbs / 29.7 kg
Construction: Finland birch plywood (phenolic resin), three coats of polyurea, matte salt and UV resistant coating, A4 316 stainless steel hardware, 3D spacer mesh fabric
Accessories: Sub Pole Cup, Active Speaker Tubes, removable rubber feet [included]
Physical: 12” (307 mm) x 16.5” (418 mm) x 31.5” (800 mm)
Colors: stocking black and white, custom colors and fabrics available



SUB310

TETRACOIL

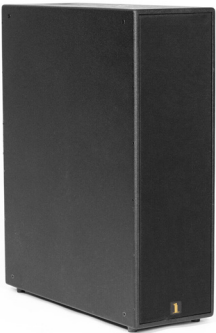
This is a compact, fast-responding, and deep bass subwoofer with a max SPL of 137 dB. The SUB310 is a triple 10” subwoofer with tetracoil technology and is only 11.8” wide or tall. This sub has rigging points to stack multiple Tower columns on top of the vertically positioned subwoofer and has a pole cup accessory to place a speaker on top.

(3) 10” drivers are stacked to create a line source for extra throw.



SPECIFICATIONS

Description: passive, line source subwoofer, ultra slim with (3) tetracoil technology drivers
Bandwidth: 32 Hz - 160 Hz (-6 dB preset dependent)
Max SPL: 137 dB SPL @ 1m with preset
Power: 2100w (program)
Directivity: omnidirectional
Elements: (3) 10" tetracoil technology low frequency drivers
Impedance: 3Ω
Connectors: (2) NL4
IP Rating: IP55 indoor/outdoor and salt water resistant
Rigging: (12) M8 points, (6) M6 points for Tower Rigging System
Weight: 54 lbs / 24.5 kg
Construction: Finland birch plywood (phenolic resin), three coats of polyurea, matte salt and UV resistant coating, A4 316 stainless steel hardware, 3D spacer mesh fabric
Accessories: Sub Pole Cup, Active Speaker Tubes, Tower Rigging System, M8 Hanging Kit, Subwoofer Outrigger Set, removable rubber feet [included]
Physical: 11.8” (300 mm) x 15.75” (400 mm) x 37.4” (950 mm)
Colors: stocking black and white, custom colors and fabrics available



CSUB610

STEERABLE

This subwoofer has a stacked triple 10” in the front and a stacked triple 10” in the rear. It is a multidirectional line source subwoofer that offers fully cardioid, sub cardioid (end fire) and omnidirectional modes. It can be placed parallel or perpendicular to a wall and is only 11.8” wide or tall.

When vertical, this sub has rigging points to stack multiple Tower columns and has a pole cup accessory to place a speaker on top.



SPECIFICATIONS

Description: passive, line source subwoofer, ultra slim with (6) tetracoil technology drivers, multidirectional (DSP dependent)
Bandwidth: 32 Hz - 160 Hz (-6 dB preset dependent)
Max SPL: 140 dB SPL @ 1m with preset
Power: 2100w + 2100w (program)
Directivity: omnidirectional, sub cardioid (end fire) or cardioid with DSP presets
Elements: (6) 10" tetracoil technology low frequency drivers
Impedance: (2) 3Ω, on a single 4-wire NL4
Connectors: (2) NL4
IP Rating: IP55 indoor/outdoor and salt water resistant
Rigging: (12) M8 points, (12) M6 points for Tower Rigging System
Weight: 108 lbs / 49 kg
Construction: Finland birch plywood (phenolic resin), three coats of polyurea, matte salt and UV resistant coating, A4 316 stainless steel hardware, 3D spacer mesh fabric
Accessories: Sub Pole Cup, Active Speaker Tubes, Tower Rigging System, Subwoofer Outrigger Set, removable rubber feet [included]
Physical: 11.8” (300 mm) x 30.9” (785 mm) x 37.4” (950 mm)
Colors: stocking black and white, custom colors and fabrics available



SUB215

TETRACOIL



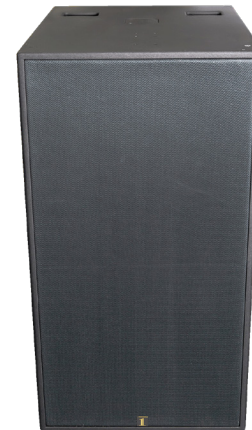
The SUB215 is a fast-responding, deep bass subwoofer capable of producing a maximum SPL of 140 dB. This cabinet is equipped with (2) 15” low frequency drivers with the latest tetracoil technology. This subwoofer is deep, but also delivers clear and punchy upper bass. The SUB215 cabinet is only 17.7” (450mm) wide when deployed vertically.

The SUB215 can be equipped with the Sub Pole Cup which allows you to deploy a CT28 on top using a 1 SOUND Active Speaker Tube, or to mount any other satellite speaker. Using the SUB215 rigging points, attach our proprietary Tower Rigging System, allowing the Tower LCC44 or LCC84 to be coupled on top with variable splay angles.



SPECIFICATIONS

Description: passive, fast-responding, powerful, deep, and loud
Bandwidth: 30 Hz - 120 Hz (-6 dB preset dependent)
Max SPL: 140 dB SPL @ 1m with preset
Power: 3600w (program), 1800w (AES)
Directivity: omnidirectional
Elements: (2) 15” tetracoil technology low frequency drivers
Impedance: 4Ω
Connectors: (2) NL4
IP Rating: IP55 indoor/outdoor and salt water resistant
Rigging: (16) M8 points, (6) M6 points for Tower Rigging System
Weight: 133.8 lbs / 60.7 kg
Construction: Finland birch plywood (phenolic resin), three coats of polyurea, matte salt and UV resistant coating, A4 316 stainless steel hardware, 3D spacer mesh fabric
Accessories: Sub Pole Cup, Active Speaker Tubes, Tower Rigging System, Removable Caster Wheel Set, removable rubber feet [included]
Physical: 37.4” (950 mm) x 17.7” (450 mm) x 26.7” (680 mm)
Colors: stocking black and white, custom colors and fabrics available



SUB2112

BI-AMPED

The SUB2112 is a 2-way bi-amped subwoofer. It produces a solid 25 Hz with an upper bass that is fast-responding, tight and loud.



The subwoofer contains (1) 4000w 21” neodymium driver and (2) 1800w 12” neodymium drivers in a compact design. This is a powerful subwoofer with a max SPL of 137 dB.



SPECIFICATIONS

Description: passive, 2-way bi-amped subwoofer, fast-responding, powerful, and loud
Bandwidth: 25 Hz - 160 Hz (-6 dB preset dependent)
Max SPL: 137 dB @ 1m with preset
Power: 4000w + 3600w (program), 2000w + 1800w (AES)
Directivity: omnidirectional
Elements: (1) 21” low frequency driver, (2) 12” low frequency drivers
Impedance: 4Ω + 4Ω
Connectors: (2) NL4
IP Rating: IP55 indoor/outdoor and salt water resistant
Rigging: (12) M8 points
Weight: 198 lbs / 90 kg
Construction: Finland birch plywood (phenolic resin), three coats of polyurea, matte salt and UV resistant coating, A4 316 stainless steel hardware, 3D spacer mesh fabric
Accessories: Sub Pole Cup, Active Speaker Tubes, Tower Rigging System, Removable Caster Wheel Set, removable rubber feet [included]
Physical: 43.3” (1100 mm) x 31.3” (795 mm) x 23.4” (594 mm)
Colors: stocking black and white, custom colors and fabrics available

COMPLETE SYSTEMS



THE CANNON SYSTEMS

The Cannon Systems are compact portable stereo systems consisting of the Cannon coaxials.

The Cannon Systems are perfect as a live performance or a corporate meeting PA. They are great for production companies, rental houses, or independent performers.



THE TOWER SYSTEMS

The Tower Systems are portable stereo line array systems made up of Tower loudspeakers with the SUB310, CSUB610, or the SUB215.

Tower Systems are modular because of the versatility of the Tower accessories and rigging points on the subwoofers.



THE CONTOUR SYSTEMS

The Contour Systems are portable, constant directivity stereo systems made up of Contour 3-way point sources paired with either the bi-amped SUB2112 or the punchy and deep SUB215.

These are next-level, powerful, compact systems that can utilize the Contour Rigging System allowing for an up or down tilt of up to 20 degrees. These systems are perfect as a live production PA, for production companies, rental houses, and touring.



RECOMMENDED CONFIGURATIONS:

THE CANNON SYSTEMS

CANNON C8/SUB12 SYSTEM

- (2) C8
 - (2) Tube Mount
 - (2) C8 C-Clamp or Mounting Plate
 - (2) 37" or 57" Active Speaker Tube
- (2) SUB12
 - (2) Sub Pole Cup
- (1) Powersoft T604 Amplifier with DSP
 - Dante available
- (4) 50' Speakon NL4 Speaker Cable
- (2) 1' Speakon NL4 Speaker Cable



THE TOWER SYSTEMS

TOWER LCC44/SUB215 SYSTEM

- (6) LCC44
 - (6) Tower Rigging System
- (2) SUB215
 - (2) Removable Caster Wheel Set
- (2) Powersoft T604 Amplifier with DSP
 - Dante available
- (4) 50' Speakon NL4 Speaker Cable
- (4) 1' Speakon NL4 Speaker Cable



TOWER LCC44/CSUB610 SYSTEM

- (6) LCC44
 - (6) Tower Rigging System
- (2) CSUB610
 - (2) Subwoofer Outrigger Set (recommended)
- (2) Powersoft T604 Amplifier with DSP
 - Dante available
- (4) 50' Speakon NL4 Speaker Cable
- (4) 1' Speakon NL4 Speaker Cable



TOWER LCC84/SUB310 SYSTEM

- (2) LCC84
 - (2) Tower Rigging System
- (2) SUB310
 - (2) Subwoofer Outrigger Set (recommended)
- (2) Powersoft T604 Amplifier with DSP
 - Dante Available
- (4) 50' Speakon NL4 Speaker Cable



TOWER LCC44/SUB310 SYSTEM

- (2) LCC44
 - (2) Tower Rigging System
 - (2) Tower Tube Mount
 - (2) 37" Active Speaker Tube
- (2) SUB310 or SUB12
 - (2) Sub Pole Cup
 - (2) Subwoofer Outrigger Set (recommended)
- (2) Powersoft T604 amplifier with DSP
 - Dante Available
- (4) 50' Speakon NL4 Speaker Cable



THE CONTOUR SYSTEMS

CONTOUR CT212/SUB2112 SYSTEM

- (2) Contour CT212
 - Contour rigging options available
- (2) SUB2112
 - (2) Removable Caster Wheel Set
- (2) Powersoft T904 amplifier with DSP
 - Dante Available
- (4) 50' Speakon NL4 Speaker Cable



CONTOUR CT28/SUB215 SYSTEM

- (2) Contour CT28
 - (2) Contour Rigging System
 - (2) Tube Mount
- (2) SUB215
 - (2) Sub Pole Cup
 - (2) Removable Caster Wheel Set
 - (2) 16" Tube or 37" Active Speaker Tube
- (1) Powersoft T904 amplifier with DSP
 - Dante Available
- (4) 50' Speakon NL4 Speaker Cable



ACCESSORIES

All hardware is designed for weather protection, A4 SS316 is recommended for harsher weather environments.

All accessories are stocked in black, white, and A4 SS316 unless otherwise specified.



Panorama MS34

C-Clamp

This accessory is provided for ceiling or wall mounting of the MS34.

A 3/8” clinch nut is provided for using the clamp on a mic stand, truss clamp, or to a threaded rod for suspension. Utilize the C-Clamp with the L-Bracket for aiming or a Tube Mount or Pole Mount.



Pole Mount Adaptor

This accessory comes with a 3/8” bolt and pole mount that attaches to the MS34 speaker to create a speaker stand mount with an industry-standard 35mm speaker pole.

- offered in black or white



L-Bracket

This L-shaped bracket is for horizontal aiming of all C-Clamps.



Tube Mount

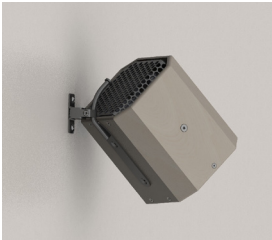
This mount enables the Contour, Cannon, and Panorama Series to be placed on our proprietary Active Tubes as well as industry-standard round speaker poles. It attaches to the Contour Rigging System, the Cannons Mounting Plate, or MS34 and Cannon C-Clamps.



Swivel Mount

C4 | C5/C6 | C8

The Swivel Mount offers discreet mounting of a Cannon to a wall. Easily adjust both the horizontal and vertical angle and tighten when at the desired position.



Pole Mount Adaptor

This accessory comes with a 3/8” bolt and pole cup that attaches to the Mounting Plate to create a speaker stand mount for any Cannon in the line.

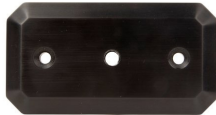
- offered in black or white



Mounting Plate

For all Cannons, this accessory is a 3/8” mounting plate that provides a center point for a mic stand, wall bracket, truss clamp, or eye-bolt. This is also used to attach the Tube Mount or Pole Mount Adaptor.

- offered in black or white



Tube Mount

This mount enables the Contour, Cannon, and Panorama Series to be placed on our proprietary Active Tubes as well as industry-standard round speaker poles. It attaches to the Contour Rigging System, the Cannons Mounting Plate, or MS34 and Cannon C-Clamps.



Cannons

C-Clamp

C4 | C5 | C6 | C8

This accessory is provided for ceiling mounting, suspending, or wall mounting the Cannons. Each model has a corresponding sized C-Clamp.

A 3/8” clinch nut is provided for using the clamp on a mic stand, truss clamp, or to a threaded rod for suspension. Utilize the C-Clamp with the L-Bracket for aiming or a Tube Mount or Pole Mount.



L-Bracket

This L-shaped bracket is for horizontal aiming of all C-Clamps.



Active Floor Stand

This is a sleek active speaker stand. This stand has a Speakon NL4 at the bottom connected to another Speakon NL4 at the top, and a steel round base. Use the Tube Mount to place the respective speaker on top.

- offered in black or white
- tube length: 70” (177 cm)



Active Speaker Tubes

These active speaker tubes have a Speakon NL4 connector at each end, so you can achieve a sleek, clean look, connecting a top speaker to a sub. The 57” tube and the 37” tube are wired with Speakon connectors and the 16” tube is not.

- offered in black or white
- tube lengths:

145 cm (≈57”)
95 cm (≈37.4”)
40 cm (≈16”)



Towers

Tower Wall Bracket *LCC44 | LCC84*

This bracket attaches to a Tower loudspeaker to mount it to a wall or ceiling. Each Tower model, the LCC44 and the LCC84, has a corresponding sized bracket.

- 180° horizontal tilt for aiming and side wall mounting
- 40° vertical tilt upward or downward
- strong and sturdy
- single person installation



Tower Rigging System

The rigging system comes with (2) plates made from billeted structural aluminum, (2) stainless steel M10x100 rigging pins and (12) M6x20 stainless steel screws. This system is used to attach a Tower loudspeaker to either another Tower, a subwoofer or a fly bar.

- colors: black or silver



Tower Ceiling Mount

The Tower Ceiling Mount is a rigid adjustable mount for any model in the Tower Series. This sturdy mount, mounts to a ceiling and offers a mounting point for the LCC44 or LCC84 Wall Bracket.



Tower Long and Short Fly Bar

These fly bars allow for suspension and angling of all Tower loudspeakers with multiple angles. A second fly bar (long or short) can be used as a pull up for the bottom of the array. These Fly Bars are made from billeted structural aluminum.

- colors: anodized black or silver



Tower Tube Mount

This mount enables a Tower speaker to be placed on our proprietary Active Tubes & industry-standard speaker poles. It attaches to the Tower Rigging System or to the speaker directly.

- attached to the Tower Rigging System, it enables (3) angle choices
- attached to a Tower directly, it offers a 0° angle



Active Floor Stand

This is a sleek active speaker stand. This stand has a Speakon NL4 at the bottom connected to another Speakon NL4 at the top, and a steel round base. Use the Tube Mount to place the respective speaker on top.

- offered in black or white
- tube length: 70" (177 cm)



Active Speaker Tubes

These active speaker tubes have a Speakon NL4 connector at each end, so you can achieve a sleek, clean look, connecting a top speaker to a sub. The 57" tube and the 37" tube are wired with Speakon connectors and the 16" tube is not.

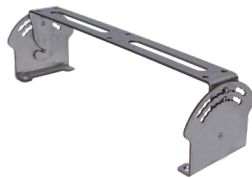
- offered in black or white
- tube lengths:
 - 145 cm (≈57")
 - 95 cm (≈37.4")
 - 40 cm (≈16")



Contours

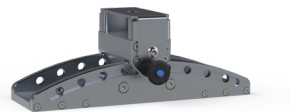
Horizontal Mounting Bracket *CT28 | CT212*

This bracket is for horizontal positioning, allowing for vertical aiming on a wall. It can also be used for ceiling mounting, facilitating both vertical and horizontal positioning.



Contour Rigging System *CT28 | CT212*

This Adjustable Rigging System attaches to the top and/or bottom of the Contour and allows for various rigging options such as hanging or attaching to a Tube Mount. The angle can be easily adjusted and set with the pin.



CT28 Angle Bar

The Angle Bar attaches to the Horizontal Bracket in order to extend the tilt angle. It can either extend the tilt angle so the CT28 is flush to the wall or the ceiling to which it is mounted, or it can provide an angle as far as 75° away from the wall or ceiling.

- minimum tilt case: 15°, maximum tilt case: 75°



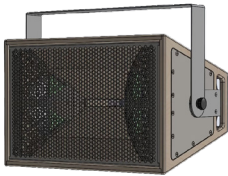
Contour Wall Bracket *CT28 | CT212*

This bracket attaches to the back of a Contour loudspeaker and mounts it to a wall. It allows for positioning on both the horizontal and vertical axis. The vertical positioning can go down to 30°.



CT28 Yoke

This yoke accessory allows for complete 360° rotation of a CT28 that is deployed horizontally or vertically.



Tube Mount

This mount enables the Contour, Cannon, and Panorama Series to be placed on our proprietary Active Tubes as well as industry-standard round speaker poles. It attaches to the Contour Rigging System, the Cannons Mounting Plate, or MS34 and Cannon C-Clamps.



Active Speaker Tubes

These active speaker tubes have a Speakon NL4 connector at each end, so you can achieve a sleek, clean look, connecting a top speaker to a sub. The 57" tube and the 37" tube are wired with Speakon connectors and the 16" tube is not.

- offered in black or white
- tube lengths:
 - 145 cm (≈57")
 - 95 cm (≈37.4")
 - 40 cm (≈16")



Contour Fly Bar
CT28 | CT212

This Fly Bar has 16 available rigging holes that allow for multiple and aggressive angles.

The CT28 Fly Bar allows for angles from +10° to -45°
The CT212 Fly Bar allows for angles from +8° to -45°



Active Floor Stand

This is a sleek active speaker stand. This stand has a Speakon NL4 at the bottom connected to another Speakon NL4 at the top, and a steel round base. Use the Tube Mount to place the respective speaker on top.

- offered in black or white
- tube length: 70" (177 cm)

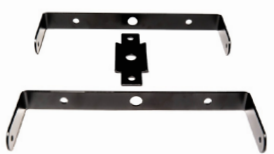


Subwoofers

WSUB45 C-Clamps & Bridge Kit

This accessory comes with (2) C-Clamps, (1) single point bridge, and hardware to attach to the bridge.

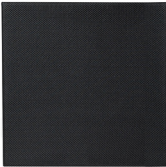
- enables mounting to a wall or suspending from a ceiling
- can be used for both horizontal or vertical positioning
- hanging bridge provides the additional strength for a single point hang



Ceiling Tile Grille

This accessory is (1) ceiling tile grille 2'x2'. This grille fits in standard ceiling tile grids and is great when hanging subwoofers in the ceiling.

- ideal for hiding a sub in a ceiling
- can be upholstered with 1 SOUND fabric colors



Hanging Kit

This accessory comes with (4) adjustable RIZE wire ropes with locking clips and (4) forged eye bolts in either M6 or M8.

- M6 forged eye bolt set: ideal for hanging the WSUB45 from a beam inside of a ceiling
- M8 forged eye bolt set: ideal for hanging the Level L38, SUB10, SUB12, & SUB310



Subwoofer Outrigger Set

This set of outriggers is meant to attach to the SUB310 or CSUB610 for secure placement on a floor. Each outrigger has adjustable feet for leveling. Two swing out 90° to be even with the edge of the cabinet, and the other two swing out 50°.

These outriggers are recommended for extra stability.

- offered in black and white



Sub Pole Cup

Made from 4 mm steel, this Sub Pole Cup goes in various 1 SOUND subwoofers for attaching a top speaker.

Special feature: this cup fits all 1 SOUND Active Speaker Tubes and industry-standard speaker poles that have an M20 screw-in bolt.



Removable Caster Wheel Set

This set has four 4" heavy duty blue wheels with caster plates to attach to larger format 1 SOUND subwoofers. Caster plates install at the dedicated rigging point on the subwoofer and allow for easily removable wheels. This set comes with (2) fixed wheels and (2) swivel locking wheels.



AURALIS

1 SOUND's 3D Design & Prediction Software

Auralis is a free downloadable 3D software application that is a multipurpose sound design tool. It enables precise, high-resolution, full-color audio predictions of your loudspeaker design in a three-dimensional space. With Auralis, you can import Collada files, or easily create your own three-dimensional space with its intuitive interface. Auralis' user experience is designed with easy organization and grouping tools. Auralis is streamlined and straightforward with clear direction to build/import your space, adjust system mechanical information with 1 SOUND rigging, 3D acoustical mapping, SPL predictions, and phase coherency. Auralis is an accurate measurement tool that utilizes information collected for every 1 SOUND loudspeaker. That data was collected in 1 SOUND's research and design lab, through rigorous testing and measurement procedures. Auralis generates customizable reports with all the applicable information. The printed mechanical reports can also act as an onsite installation reference. Auralis supports various design application types, working with multiple loudspeakers, Tower arrays, and measurement microphones.

1 SOUND aims for Auralis to be an iterative free software. The goal is to support designers and integrators with an intuitive and visually straightforward tool that assists with designing audio in a physical space. 1 SOUND will continuously update the software in the future, adding innovative new tools and maintaining any additions to the 1 SOUND speaker catalog.

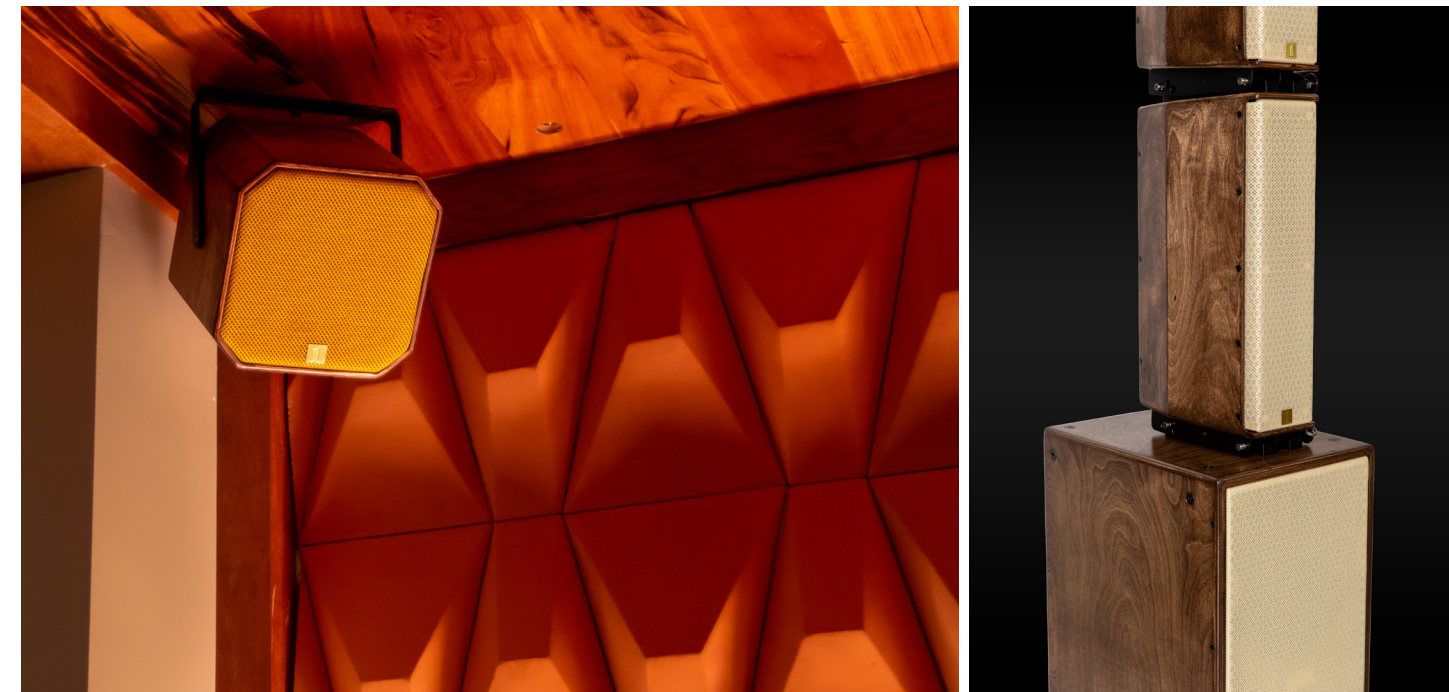


www.1-sound.com/Auralis



DRIVEN BY OUR PASSION FOR THE CRAFT

At 1 SOUND, we offer all of our products in custom color variations, metallic paints, and natural wood finishes. We are happy to work with clients to ensure that their design goals are satisfied. Our local sourcing of building materials allows us to manufacture custom orders with a quicker turnaround. With 1 SOUND Custom Shop, you can have an aesthetically individualized audio system, hand built with the 1 SOUND signature sound.



CUSTOM SHOP

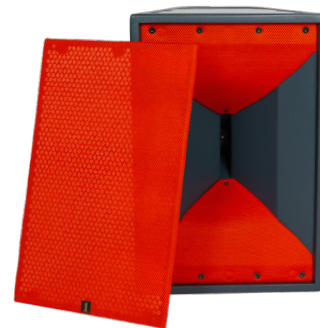


Want a custom color speaker?

We stock various fabric grille colors to deliver custom colored speakers quickly.

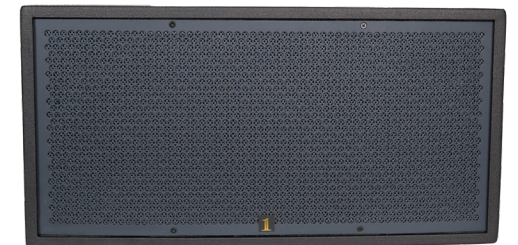
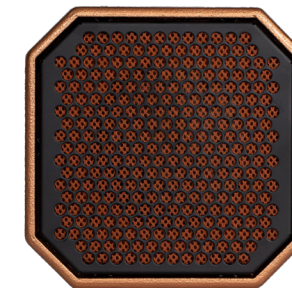
If you need something more specific, send us a sample or photo of the color you would like and we would love to create the perfect fit for you with our Custom Concierge Service.

We stock only black and white speaker cabinets. For a custom color cabinet please allow at least 3-4 weeks lead time, and at least a month for natural wood or metallic finishes.



CUSTOM COLORS & EXPOSED GRILLES

Select any color for your indoor or outdoor 1 SOUND loudspeakers. Any paint color can be selected for loudspeaker cabinets, exposed metal grilles, and C-Clamp accessories. Utilizing our Custom Concierge Service, you can send us a sample to color match or ask us for our color recommendations and combinations for your project and we will send you a few custom options.



Please contact us with any questions.
www.1-sound.com/contact

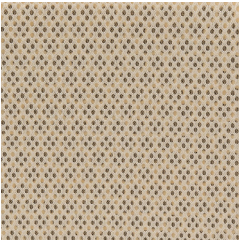
FABRICS IN STOCK

1 SOUND Black

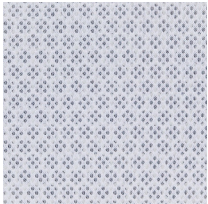


black

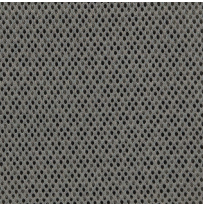
1 SOUND White



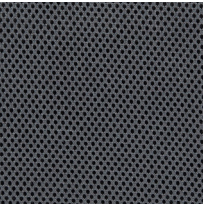
champagne



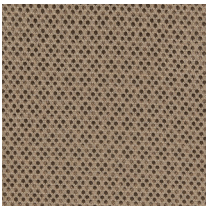
pure white



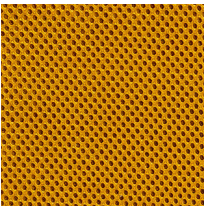
silver



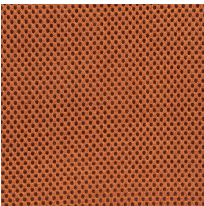
gray



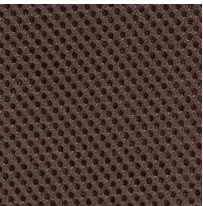
sandy beige



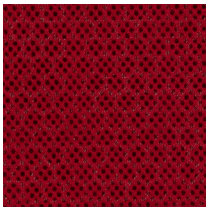
gold



copper



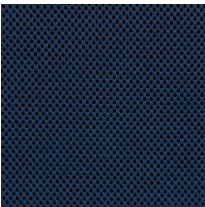
dark brown



red

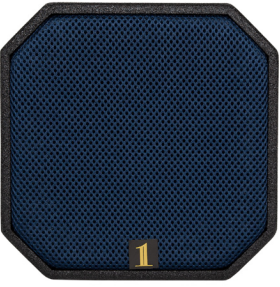
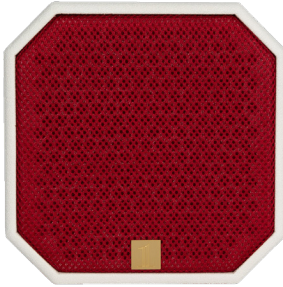
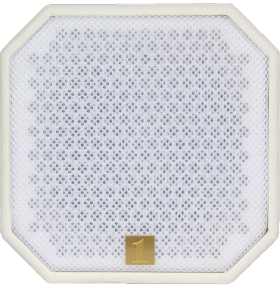


forest green



navy blue

*Colors may appear slightly altered in this replication



WOOD STAIN OPTIONS



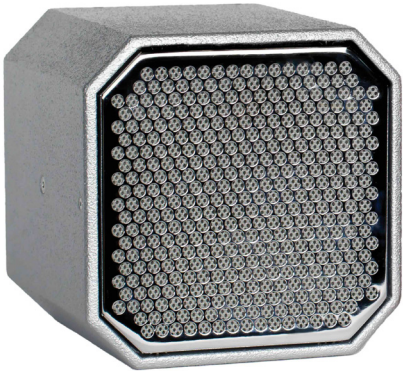
*Colors may appear slightly altered in this replication

METALLIC FINISHES

We offer metallic finishes for loudspeaker cabinets and metal plating for our metal grilles and C-Clamp accessories from various materials such as chrome, brass, gold, nickel, and more. If you would like something specific reach out to us directly or send us a sample.



Rich Gold with Brass-Plated Grille



Aluminum
with Chrome-Plated Grille



Copper
with Matte Black Grille



