

Benefits of Home Health Care:

- care is provided in the privacy and comfort of your home
- all services are coordinated with your physician(s)
- 24 hour access to a skilled nurse
- home care may prevent hospitalizations/re-hospitalizations
- home care enables patients to leave the hospital sooner

Who can refer you:

- your doctor, family, and friends
- you can refer yourself
- insurance companies, nursing homes, hospitals, and rehab units may also refer you



What will insurance cover?

your insurance may provide complete or partial payment. The home health care team will explain your coverage and will bill your insurance directly.

We accept;

- Medicare

What type of conditions would indicate a need for home health care?

- new surgical procedure
- new or change in your medical diagnosis
- new or changed medication
- problems with talking or swallowing
- new or changed caregiver
- new medical equipment such as oxygen, a walker, blood sugar monitor, etc.
- difficulty walking, transferring, or performing regular daily activities



More Information :



ph: 323.660.0055 fax: 323.701.0877
fax: 323.660.0055



RoyalHollywoodHealthcare@gmail.com



5068 Hollywood Blvd Suite A
Los Angeles, CA 90027



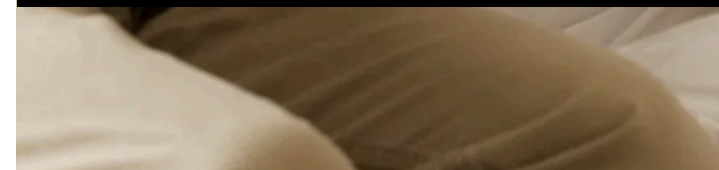
RoyalHollywoodHealthcare.com

ROYAL HOLLYWOOD HEALTHCARE INC. does not discriminate against any individual or group on the basis of race, color, creed, gender, national origin, religion, age, handicap, disability, marital status, sexual orientation, or source of payment of care.



**ROYAL HOLLYWOOD
HEALTHCARE INC.**

Our mission is to provide our clients with the highest quality of home care services available, helping them to live comfortably and safely at home. We operate with the philosophy that every patient should receive care in the safest, most appropriate and least restrictive way possible.



Our Services

Skilled nursing: Registered Nurses (RNs) and Licensed Vocational Nurses (LVNs) work with your doctor(s) to provide home care services. Their assignment, establishment of nursing care plan, skilled treatment and support provide the highest quality care you need to recover at home. A registered nurse is available for admissions, urgent situations or questions 24 hours a day.

Home care nurses are able to provide:

- Skilled nursing assessments
- wound care and dressing changes
- injections
- catheter care
- ostomy care
- intravenous fluid/medication management
- diabetes mellitus care
- vital signs monitoring
- teaching to patient and family about safety, medications, diet/nutrition and diseases



Certified home health aides

Home health aides are certified nursing assistants who provide assistance with personal care:

- eating
- bathing
- personal hygiene
- ambulation

Physical Therapy: Our physical therapy staff will come to your home to assess and treat functional impairments that result from injury, stroke, surgery, fractures, or other medical conditions. Physical therapy services include:

- therapeutic exercises
- gait training
- instructions in using walker and cane
- pain management
- education on safety precautions

Occupational Therapy: The occupational therapist is a qualified healthcare professional who directs, supervises, evaluates and provides occupational therapy services to clients in the home by providing:

- rehabilitative care for patients needing assistance
- training in activities of daily living

Speech Therapy:

- help patients to improve speech and communication
- evaluate and treat swallowing disorders



Medical Social Services

Our medical social services staff help patients and family members understand and cope with problems caused by illness/injury.

- assessment of emotional and social factors related to the patient and family
- evaluate the home and family environment
- counseling and education to maximize strength and coping skills
- provide guidance with problem solving interventions
- assistance in financial matters
- coordination of community resources

**Professional Ancillary Services
(By Referral Only)**

- laboratory tests
- infusion medications and supplies
- inhalation therapy and supplies
- equipment and supplies, e.g., wheelchairs, canes, walkers, hospital beds