



## **PWB Tool Master Presetters**

*The absolute precise and most efficient solution for professional tool setting, measuring, testing, and tool management for any size manufacturing business.*

## The finest high-precision Swiss-built presetting system that lead you to success.

1. The PWB **TOOL MASTER** Modular System provides a high-quality solution for setting and measuring tool assemblies.
2. The **TOOL MASTER** is easy, fast, safe, precise, and delivers highly accurate results. With the **TOOL MASTER**, you can greatly improve the efficiency and profitability of your tool-setting and CNC machinery operations – Spindle Uptime!
3. We guarantee you higher quality, enhanced safety, increase tool processing efficiency, improved process reliability, and less machine spindle downtime.



**QUADRA**

Compact solution for high quality and optimization of measuring processes.



**CNC – NC**

Full and Semi-Automatic Measurement



**BASIC**

Unbeatable and efficient entry-level solution  
for exact measurement of tooling assemblies.

## TOOL MASTER **BASIC**

The unbeatable and efficient entry-level solution for exact measurements of tool assemblies.

Equipped with all the necessary measurement functions.

### FEATURES:

- Plug and Play Solution
- Manual Control in X / Z / C
- EyeRay® Basic Image Processing
- CMOS digital camera with telecentric lens
- PWB desktop PC solution with 18.5" monitor
- Integrated ISO50 or ISO40 tool spindle
- Pneumatic clamping in X and Z
- Endless manual fine adjustment
- Fast focusing of the tool cutting edge
- Tool inspection in transmitted reflected light
- EyeRay® interface
- Online support interface
- Multi-lingual measuring software EyeRay®
- Highest concentricity & highest measuring repeatability thanks to the EVOSET high spindle needle bearing precision.
- High axial radial runout accuracy needle bearing from  $< 2\mu$ ; vacuum spindle KV from  $< 2\mu$ .
- Operating system Windows 10
- Electrical voltage 230 Volt

### OPTIONAL

- Cabinet with adapter tray for tools
- Master mandrel, small
- Thermal printer incl. 1 roll of labels
- Tool inspection in reflected light
- Indexing device for turning tools
- Mechanical spindle brake
- Vacuum clamping with pneumatic spindle brake
- Data transfer through post-processor, RFID data carrier (Balluff), QR code, customer's specialized solutions

**Starting at \$19,765.00**



**MEASUREMENT RANGE**

X=400 Z=400



## TOOL MASTER *QUADRA*

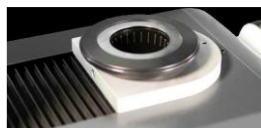
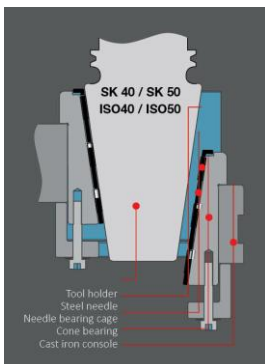
**Starting at \$35,285.00**

### FEATURES



#### MEASUREMENT RANGE

X=400 Z=400      X=600 Z=400  
X=400 Z=600      X=600 Z=600  
On request: measuring ranges up to  
Z=760 mm



- Manual control in X | Z and C
- EyeRay® Quadra image processing
- CMOS digital camera telecentric lens
- All in One PC 22" with touch screen
- Measuring system with glass scales
- Endless manual fine adjustment
- Integrated ISO50 or ISO40 tool spindle
- Pneumatic clamping in X and Z
- Spindle clamping
- Tool inspection in transmitted and reflected light
- Cabinet with integrated tool spindle tray for Tools
- Thermal printer incl. 1 roll of labels
- Adapter and tool management
- EyeRay® Interface
- Online Support Interface
- Operator management
- Multi-lingual measuring software EyeRay®
- Highest concentricity & highest measuring repeatability thanks to the EVOSET high precision spindle needle bearing.
- High axial radial runout accuracy needle bearing from < 2µ; vacuum spindle KV from < 2µ.
- Plug-in connector with adapter EU/CH
- Operating system Windows 10
- Electrical voltage 230 Volt

### OPTIONAL

- Measuring field shift in X and Z axis
- Pneumatic selective clamping in X and Z
- Data transfer through post-processor, RFID data carrier (Balluff), QR code, customer's specialized solutions
- Two-camera systems
- Indexing device for turning tools
- Vacuum clamping with pneumatic Spindle brake
- High precision CNC spindle with quick clamping system PSE
- Pull-in force: HSK=3 kN / SK=1.2 kN



# EVOSET

...for best measuring results

## TOOL MASTER CNC / NC

**Starting at \$64,920.00**

With the TOOL MASTER CNC | NC, tools can be measured at the touch of a button.

This makes the measurement results accurate, visual and the measuring process fast and efficient.

Absolute precision with simple operation.

With brand-name components and our EyeRay® CNC image processing system, we guarantee you highest process reliability and quality.

## Full and Semi-Automatic Measurement



### FEATURE

- Manual control in X | Z and C
- EyeRay® Quadra image processing
- CMOS digital camera with telecentric lens
- All in One PC 22" with touch screen
- Measuring system with glass scales
- Endless manual fine adjustment
- Integrated ISO50 or ISO40 tool spindle
- Pneumatic clamping in X and Z
- Spindle clamping
- Tool inspection in transmitted and reflected light
- Cabinet with integrated tool spindle tray for tools
- Thermal printer incl. 1 roll of labels
- Adapter and tool management
- EyeRay® Interface
- Online Support Interface
- Operator management
- Multi-lingual measuring software EyeRay®
- Highest concentricity & highest measuring repeatability thanks to the EVOSET high precision spindle needle bearing
- High axial radial runout accuracy needle bearing from < 2μ; vacuum spindle KV from < 2μ
- Plug-in connector with adapter EU/CH
- Operating system Windows 10
- Electrical voltage 230 Volt

### OPTIONAL

- Data transfer through post-processor, RFID data carrier (Balluff), QR code, customer's specialized solutions

### MEASUREMENT RANGE

X=400 Z=365

X=400 Z=565

X=400 Z=665

X=600 Z=365

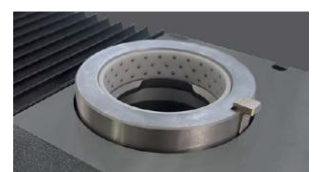
X=600 Z=565

X=600 Z=665

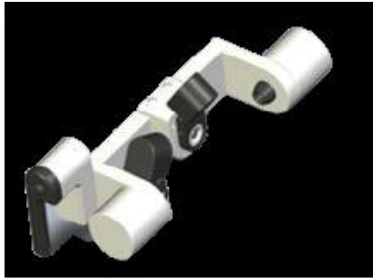
### PSE POWER CLAMPING

#### PSE SPINDLE

- Quick clamping system PSE with pull-in force: HSK=3 kN / SK=1.2 kN
- Quick adapter change in maximum 5 seconds
- High axial radial runout accuracy from < 2μ
- Integrated calibration edge for exact and fast determination of the spindle zero point
- Motorized spindle brake for locking of the spindle in the desired position over the entire 360°



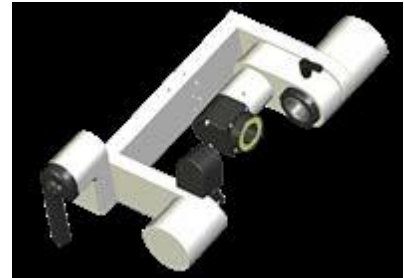
## Accessories and Optional Equipment



CHC / Center Height Camera



YAC / Vertical-Horizontal Camera  
Measuring of multi-edge tools with offset cutting edges. Measuring range + 20mm to - 20mm



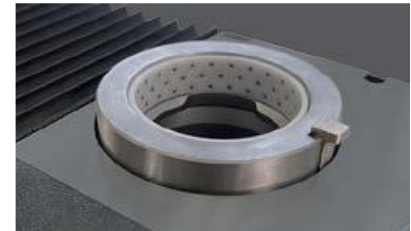
VHC / Vertical - Horizontal Camera –  
Measuring in Horizontal and Vertical directions. The camera is horizontally and vertically adjustable with any intermediate angles – this allows measuring of cutting angles and radii.



LED Light Ring



Inspection / Front Light



PSE - Power Clamping Spindle



Vacuum Spindle



Needle Bearing Spindle with  
Spindle Brake



Indexing equipment for rotary tools



Tool Tray for holders



Master Mandrels 40 and 50 tapers



Printer

## CNC | NC Clamping Inserts | Reduction | ADAPTER

### SK

- Reduction SK/ISO to SK/ISO  
In-house calibration ensures consistent quality
- Offset value is engraved on the reduction according to the following table



Internal Taper	Offset value (Z)	
	External Taper	
	50 Taper	40 Taper
SK10	30 mm	30 mm
SK15	30 mm	30 mm
SK20	15 mm	15 mm
SK25	15 mm	15 mm
SK30	15 mm	15 mm
SK35	15 mm	15 mm
SK40	15 mm	
SK45	15 mm	

### HSK (A to F)

- Reduction SK/ISO to HSK, available with and without clamping attachment
- Offset value is engraved on the reduction according to the following table.



Internal Taper	Offset value (Z)	
	External Taper	
	50 Taper	40 Taper
HSK25A	15 mm	15 mm
HSK32A	15 mm	15 mm
HSK40A	15 mm	15 mm
HSK50A	15 mm	15 mm
HSK63A	15 mm	60 mm
HSK80A	52 mm	15 mm
HSK100A	70 mm	

### VDI with clamp lever

- Clamping of the VDI tool holder with clamping lever
- Clearance provided in the reduction for O-ring of the VDI shank



Internal Taper	Offset value (Z)	
	External Taper	
	50 Taper	40 Taper
VDI16	50 mm	50 mm
VDI20	35 mm	35 mm
VDI25	35 mm	35 mm
VDI30	35 mm	35 mm
VDI40	35 mm	70 mm
VDI50	52 mm	90 mm
VDI60	100 mm	

## CNC | NC Clamping Inserts | Reduction | ADAPTER

### VDI with index

- 4x90° indexing on reduction.  
VDI tool holder is aligned in reduction by means of centering pins
- Clearance provided in reduction for O-ring of the VDI shank



Internal Taper	Offset value (Z)	
	50 Taper	40 Taper
VDI16	50 mm	50 mm
VDI20	35 mm	35 mm
VDI25	35 mm	35 mm
VDI30	35 mm	35 mm
VDI40	35 mm	80 mm
VDI50	52 mm	
VDI60	100 mm	
VDI80	140 mm	

### CAPTO® Easy™

- Capto tool holder is centered using the 3 highest points of the polygon in the reduction, fixed with clamping claw.



Internal Taper	Offset value (Z)	
	50 Taper	40 Taper
C3	15 mm	
C4	15 mm	
C5	15 mm	
C6	15 mm	
C8	52 mm	
C10	80 mm	

# SOFTWARE

With EyeRay® you are.  
ahead worldwide

The EYERAY® software is dependable, easy to operate, Modular and expandable – a world leader. EyeRay® with its collection of software modules is a comprehensive and professional application for tool presetting, measurement, and evaluation. All PWB TOOL MASTER devices are equipped with EyeRay® for simple and complex measuring tasks and guarantees a solution for every requirement.

- Easy to operate with only six basic icons
- Self-explanatory functional keys
- Expandable and upgradeable for any special measurement functions and requirements
- Quick measurements thanks to favorite shortcuts
- Fully automated operation
- Connection interfaces to all possible machine controls and manufacturing processes
- Guaranteed process reliability
- Consistently precise measurement results



# DATA TRANSFER

Basis for conventional or modern manufacturing  
- optimized production processes from tool management, CAD/CAM to setting, measuring and shrinking of tools.

EVOSET offers a range of interfaces to CAM systems as well as to all various machine controls. The data transfer and communication between the various systems is simple, secure, and quick.

In modern manufacturing, the tool data is the Basis of all production processes - from the CAD/CAM system through setting and measuring to the production of the workpiece.



## DATA TRANSFER POSSIBILITIES

- Post-processor
- RFID data carrier (Balluff)
- QR CODE with scanning
- Data Matrix code
- USB stick or serial interface
- Label printing
- Customized connections

## SERVICE & AFTER SALES

We offer you a comprehensive service to achieve and maintain maximum efficiency of production.

Our service team supports you for your individual requirements, installation, and product training with EVOSET, you have not only high precision products but also, highly professional assistance and broad manufacturing knowledge.

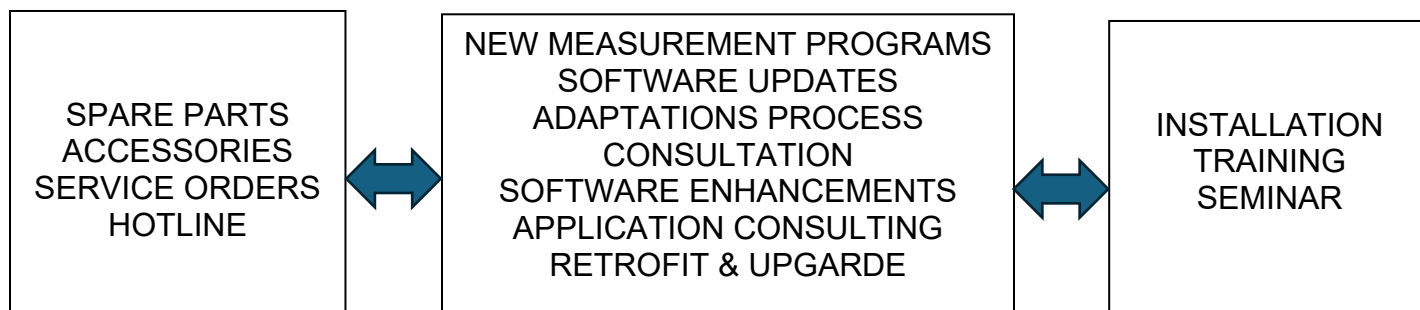
### ADDED VALUE

- Customer service, refer to local agent or [service@evoaset.com](mailto:service@evoaset.com)
- Remote maintenance (online support) - for any kind of software problem or for quick support
- Software updates for new or optimized functions
- Conversion, upgrade, and retro fit kits for all devices
- Additional data connections and interfaces
- Individual customization of software & data entry of software
- Spare parts & accessories



**To avail the best use of EVOSET PRODUCTS our excellently trained staff offers professional consulting, commissioning, and product training.**

**SERVICE - THE TRUE MEASURE OF VALUE**





EVOSET

## SWISS INNOVATION FOR THE WHOLE WORLD

EVOSET is the world leader in tool presetting and tool measuring. We combine productivity with absolute user friendliness and offer tailor-made solutions for individual project requirements, through to complete solutions in the area of tool management and connection to all manufacturing processes.

The focus of the product lines is in the optimal realization of the individual customer needs. EVOSET pursues intelligent and complementary solutions in the area of tool presetting management, measurement, inspection and shrinking.

We have experience with our own developments of devices and software. Our engineering staff guarantees knowledge, success, and efficiency for your product – we increase your productivity.

In addition to the strong product development and production, we offer a worldwide professional service in time to our customers.

As a partner of the manufacturing industry EVOSET continuously develops new Swiss quality products to further optimize the processes of the industry.

Your satisfaction and your success are our highest priority.

## QUALITY AND RESPONSIBILITY

EVOSET stands for world-class «MADE IN SWITZERLAND»

The success of our customers and partners demonstrates the importance of innovation and sustainable thinking, high quality implementation taking into consideration cost efficiency and sustainability.

Our products are built to be energy-efficient and environmentally friendly.

Our technologies and methods not only benefit the environment, but they also help our customers to save money.

Our mindset is reflected in our remarkable international reputation EVOSET stands for world-class «MADE IN SWITZERLAND»



**Accutek Inc.**

15 W. Commercial Ave.

Addison IL 60101-4501

[info@accutekusa.com](mailto:info@accutekusa.com)

+1 312-857-6577