

JACC
Group The Manufacturer's Rep Agency

DO YOU KNOW JACC?

Supporting the Metal Working Industry with Christian Integrity and Quality Products

FEATURED PRODUCT CATALOG



ALABAMA | ARKANSAS | LOUISIANA | MISSISSIPPI | OKLAHOMA | TEXAS

WWW.KNOWJACC.COM | 903-656-JACC (5222) | INFO@KNOWJACC.COM



Where We Support



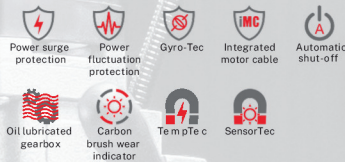
EUROBOOR

FOR PROFESSIONALS BY PROFESSIONALS

Euroboor | 160 White Oak Road, Hayden, AL 35079 | 844-266-8527 | info.usa@euroboor.com

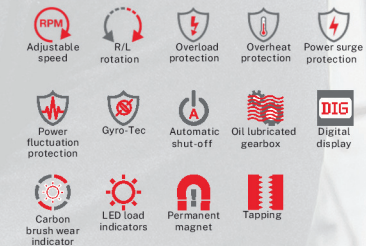
MAGDRILL ECO.40 S+

Annular Cutting	Ø 7/16" - 1 9/16"
Twist Drilling	Ø 1/16" - 5/8"
Stroke	5 11/16"
Motor Power	10.5 A
Spindle (Weldon)	3/4"



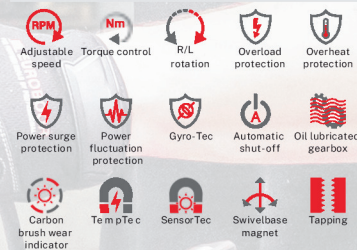
MAGDRILL TUBE.55 S+/T

Annular cutting	Ø 7/16" - 2 3/16"
Twist drilling	Ø 1/16" - 15/16"
Tapping	Ø 1/8" - 13/16"
Stroke	6 11/16"
Min. pipe diameter	3 1/8"
Motor power	14.6 A
Spindle (Weldon)	MT3 3/4"



MAGDRILL ECO.100 S+/TD

Annular cutting	Ø 7/16" - 4"
Twist drilling	Ø 1/16" - 1 1/4"
Tapping	Ø 1/8" - 13/16"
Stroke	10 1/4"
Motor power	17.3 A
Spindle (Weldon)	MT3 1 1/4"



ANNULAR CUTTERS (Free pilot pin included)

7/16" up tot 8"

Available in cutting depths of:
1, 2, 3, 4, 6 and 8 inch

DRY-CUT SAW EDC.355 - 2480 Watt 2 SAW BLADES (14") INCLUDED



Motor power	11 A
Cutting angle	adjustable, 0° - 45°
Cutting capacity at 0°	● 4 3/4"
	■ 4 1/8" x 4 1/8"
	■ 3 9/16" x 5 11/16"
Cutting capacity at 45°	● 3 9/16" 3 1/8" x
	■ 3 1/8" 3 9/16" x
	■ 3 1/8"

Where We Support



SWISS & GERMAN QUALITY WITHOUT THE PRICE TAG

Accutek, INC | 15 W. Commercial Ave, Addison, IL 60101-4501 U.S.A. | +1 (312) 857-6577 | info@accutekusa.com



SHRINK UNIT US 1100VTC VERTICAL WITH TUBECHILLER®

- Includes an optional pyrometer coil with TempControl for monitoring the shrink temperature.
- Offers a footswitch for "hands-free" operation, enhancing i4.0 functionality.
- Enables reading tool data through RFID chip, Data Matrix, or QR code.
- Features integrated data interfaces such as USB and RS 242 for seamless network integration.
- Provides data transfer capabilities for statistical evaluations and documentation.

TOOLMASTER BASIC

- Plug & Play solution. EyeRay® Basic image Processing
- Evoset PWB PC solution with 18.5" monitor. Online support interface
- CMOS digital camera with telecentric lens.
- Manual control in X | Z & Pneumatic clamping.
- Fast focusing of the tool cutting edge.
- Integrated ISO50 or ISO40 spindle. Highest concentricity & measuring repeatability



CAT40 ACCUCLAMP™ HYDRAULIC CHUCKS

FEATURES:

Balanced to G2.5 @ 25,000 RPM

Taper shank ground to AT3 accuracy (or better)

T.I.R. < 0.0002" | Bore tolerance: H6 | ANSI/ASME B5.50-1994



CAT40 ACCUCLAMP™ HYDRAULIC CHUCKS SLIM DESIGN

FEATURES:

Balanced to G2.5 @ 25,000 RPM

Taper shank ground to AT3 accuracy (or better)

T.I.R. < 0.0002" | Bore tolerance: H6 | ANSI/ASME B5.50-1994

CAPTO STATIC TURNING TOOL



Where We Support



Texas Tough, Serving OK, TX, AR, LA, MS, AL, TN

GLOBALLY SOURCED WITH SOUTHERN AMERICAN PRIDE

Badger | 7609 White Settlement Rd. | Fort Worth, TX 76108 | 682-707-9344 | sales@globaltoolandtechnology.com

WELDING SAFETY

LET BADGER DEFEND YOUR WELDERS

DRIVER'S GLOVE
SPLIT COWHIDE



14 "BLUE WELDERS GLOVE -
FOAM LINING W/KEVLAR



PREMIUM COW PALM &
SPLIT LEATHER BACK
HAND - KEVLAR

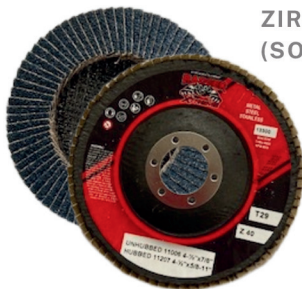


BADGER RED AND
BLACK 9 OZ FR
COTTON SATIN
JACKET

GRINDING AND MORE

GRINDING AND MORE

Flap Discs, Wire Wheels, Cut Off Wheels, Grinding Wheels and more



ZIRCONIA FLAP DISCS
(SOLD BOX 10)



A/O CUTTING WHEELS -
TYPE 1 OR TYPE 27
(DEPRESSED CENTER)

ZIRCONIA
GRINDING WHEELS



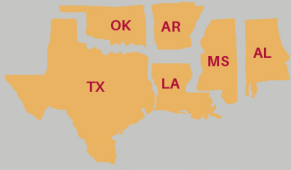
STRINGER BEAD
WIRE WHEELS



WIRE HAND
BRUSHES



Where We Support



ENCON[®] SAFETY PRODUCTS

Encon Safety Products | 1-800-283-6266 (toll free) | 713-715-4673 (direct)
6825 W Sam Houston Pkwy. N Houston, TX 77041

SAFETY

VERATTI[®] PRIMO[™]



VERATTI[®] ENCOUNTER[™]



VERATTI[®] TORETO[™]



VERATTI[®] FORZATECH[™] 13 GAUGE, A6 COMPOSITE CUT RESISTANT LINER WITH SANDY NITRILE COATING



VERATTI[®] FORZATECH[™] 13 GAUGE A4 COMPOSITE CUT RESISTANT HIGH VIZ LIME GREEN SLEEVE



GET THE FOG OUT

Veratti Fog Fixer
Prevents Fogging & Improves Visibility

- Alcohol Free
- Silicone Free
- Anti-Static
- Natural, Non-Toxic

Veratti Lens Cleaning Towelettes

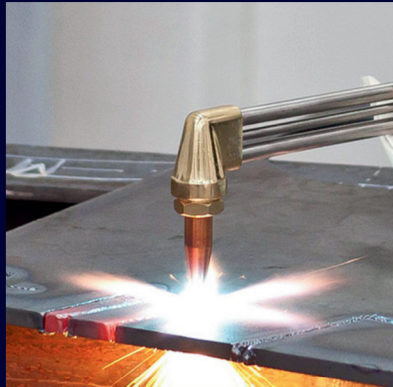
- Alcohol Free
- Silicone Free
- Anti-Static
- Natural, Non-Toxic

100 Individual Packets
WON'T GET OUT!
SAFE FOR YOUR EYES

Where We Support



Chemweld, Inc. | 4530 South Berkeley Lake Rd NW Suite A, Norcross, GA 30071 | 770-662-0370 |
www.chemweldusa.com



Worried about Safety, increasing cost of Acetylene,
and the reduced production of other alternative fuels?

Chem-O-Lene is Safer, Cuts Faster, and can reduce
cost as much as 50%



Where We Support



Razorweld

Technologies America Inc. | 25503 74th Ave S Kent WA 98032 | 253 859-6277 | sales@razorweld.com



**Razorcut 45 Digital Plasma Cutter |
AMP DIGITAL | PFC PLASMA CUTTER**



**Razor 250 Multi Digital
Welder | RAZORWELD 250di |
Razor 250 Multi Digital
Welder**



**85X
1/1/1/1 CLASSIFICATION**



**RWX 7000
1/1/1/1 CLASSIFICATION**



**RWX 1000
1/1/1/2 CLASSIFICATION
DETACHABLE GOOGLES**



FLAME TECH

Flame Technologies, Inc. | 703 Cypress Creek, Cedar Park, TX 78613 | 512-219-8481
www.flametechnologies.com

V-STYLE HEAVY DUTY COMBO TORCH KITS



V-STYLE MEDIUM & LIGHT DUTY COMBO TORCH KITS



ARGON & CO2 GAS FLOW CONTROL



Flowmeters: 100-FL-AR-60-580 (Aragon)



Flowmeters: 100-FL-CD-60-320 (CO2)

SPECIALTY REGULATORS

Regulators: VHAR-21 - Acetylene



HEATING & WELDING/BRAZING ASSEMBLIES | OXYACETYLENE HEATING NOZZLES



FLAME TECH V-SCRAPPER-5 SCORPION PROPANE TORCH TIP

H-SCRAPPERS CUTTING TIPS | HARRIS STYLE SERIES H



Where We Support



CONTINENTAL TOOL
GROUP

Continental Tool | 25 Leonberg Road, Pittsburgh, PA 16066 | P: (800) 327-9403 | info@continentaltoolgroup.com

UT8720-20 1/4" Die Grinder 20,000 rps

.7HP motor with reduced vibration and added stall resistance

- Heavy duty ball bearing construction
- Internal silencing reduces noise output
- Safety lock throttle



UT8780-1 4-1/2" Angle Grinder

This angle grinder has a 0.9 HP motor for extra stall resistance, a safety lock-off throttle, and a governor controlled to maintain speed under-load. It also features heavy-duty spiral gears for reliability and an ergonomic composite grip for comfort and reduced vibration.



1770-XL 3/4" COMPOSITE IMPACT WRENCH

- 1770-XLBB
- Black AIRCAT® Boot
- Fits Model: 1770-XL

The product offers a maximum torque of 1,400 ft-lb and a loosening torque of 1,600 ft-lb. Its refined twin hammer design enhances both blow frequency and overall efficiency.



ATP IMPACT SOCKETS COME IN 1/2", 3/4", 1", AND LARGER DRIVE SIZES

ATP impact sockets come in 1/2", 3/4", 1", and larger drive sizes, with both metric and fractional measurements. They are available in 6-point, 8-point, and 12-point configurations. Made from heat-treated alloy steel, ATP sockets offer excellent strength and durability.



Where We Support



FULLERTON

TOOL COMPANY

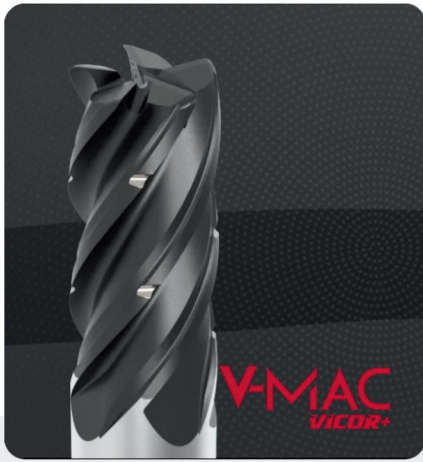


Fullerton | 121 Perry St, Saginaw, MI 48602 | 800.248.8315 | sales@fullertontool.com

INTRODUCING OUR JUST IN TIME (JIT) SERVICES

Our Just-In-Time End Mills, Reamers, Saws, and Keyseat Cutters are manufactured to your specs and ready to ship in 24-48 hours.

Check Out What's New



5125 | V-Mac Vicor +



3500SM | Micro Fury



3125 | V-Mac Vicor

HIGH PERFORMANCE END MILLS



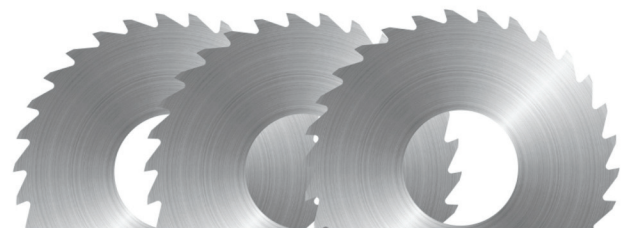
CARBIDE ROUTERS



CARBIDE REAMERS



CARBIDE SAWS



Where We Support



UNIQUE PRODUCTS • INNOVATIVE SOLUTIONS

Flexbar Machine Corporation | 250 Gibbs Road Islandia, NY 11749 | 1-800-879-7575 | sales@flexbar.com

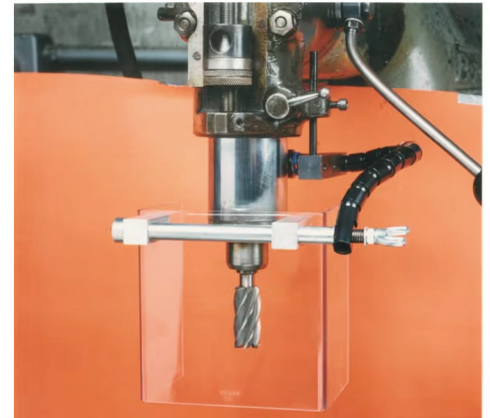
MACHINE GUARD SECTION

Grinder Guard



Machine Guard

Spindle Guard

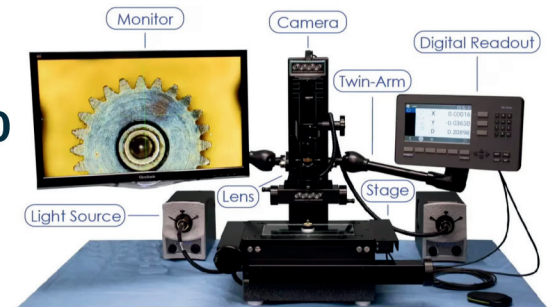


INSPECTION & MEASUREMENT



Triga Bore

MLS-3000



Digital Caliper

DO YOU KNOW JACC?

WE WORK HARD & PLAY HARD



WWW.KNOWJACC.COM | 903-656-JACC (5222) | INFO@KNOWJACC.COM



LOCATIONS

Stephen Battye
(Territory Representative)
Arkansas & Oklahoma
479-899-2819
Stephen@knowjacc.com

Joe Cazedessus JR
(Territory Manager)
Southern Texas
225-939-1690
jr@knowjacc.com

Ben Benard
(Territory Representative)
Louisiana, Mississippi, Southern Alabama
337-207-2655
Ben@knowjacc.com

Dylan DeLee
(Owner / Sales Manager)
North Texas & North Alabama
225-328-2580
Dylan@knowjacc.com

Joe Cazedessus
(Owner)
225-405-4692
JoeCaz@knowjacc.com

WWW.KNOWJACC.COM | 903-656-JACC (5222) | INFO@KNOWJACC.COM

