

**“No winter lasts forever;
spring always finds a way”**

Revised Version 04:

“Winter Orchid - blooming in the bitter cold” & “Frozen Wave”

Through an imaginary transformation of a tropical floral – Orchid, blooming in the bitter cold, as a symbolic Winter Flower in this visionary approach, it shows great spirit of courage and resilience in overcoming the COVID-19 condition.



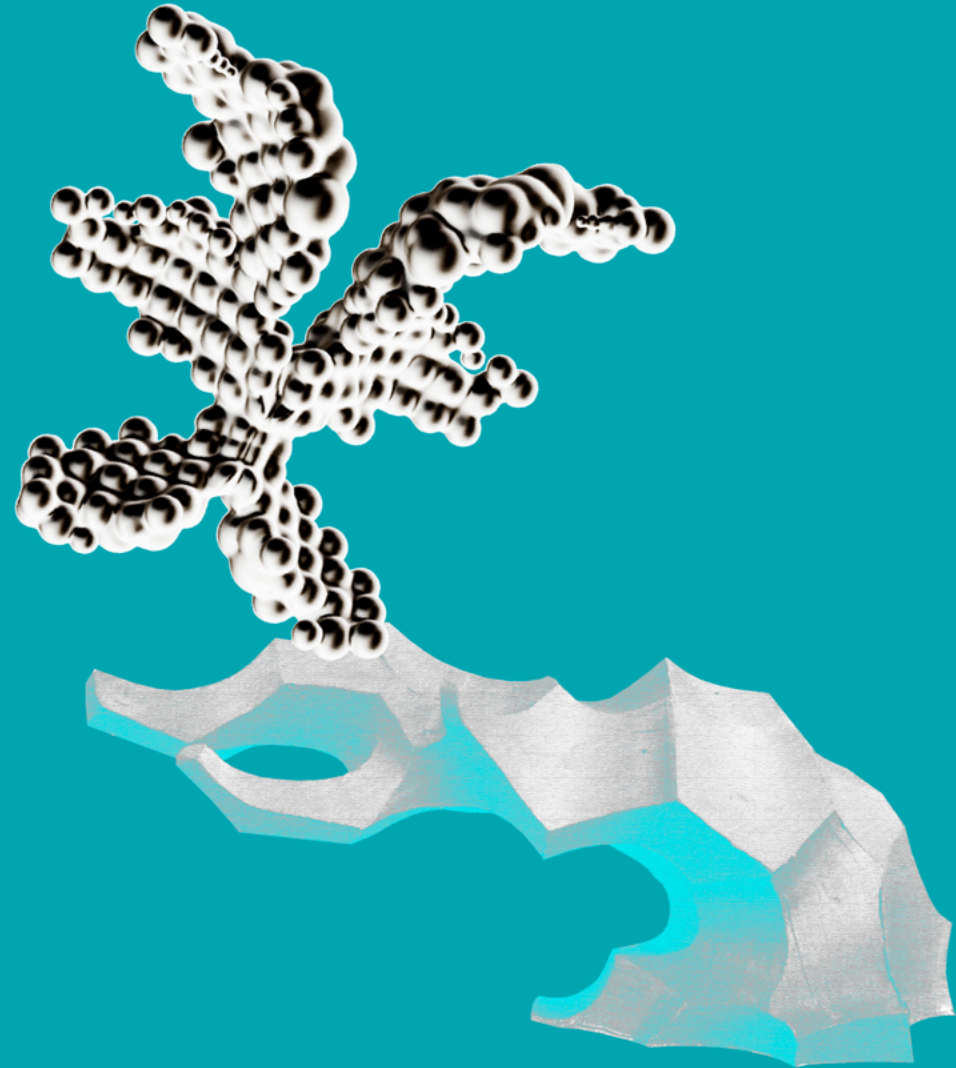


Winter Flower – Plum Blossom



Winter Orchid of Singapore / Singapore Butterfly

Through the simulation of classical Plum Blossom image on snowy tree branch, the Winter Flower will be replaced by Winter Orchid. Snow and ice melts in the spring and becomes water that nourishes life. The Winter Orchid eventually will further evolve as Singapore Butterfly, with countless water vapour forms bubble-like stainless-steel spheres, and fly off at the arrival of **Spring** after the COVID-19 Winter.



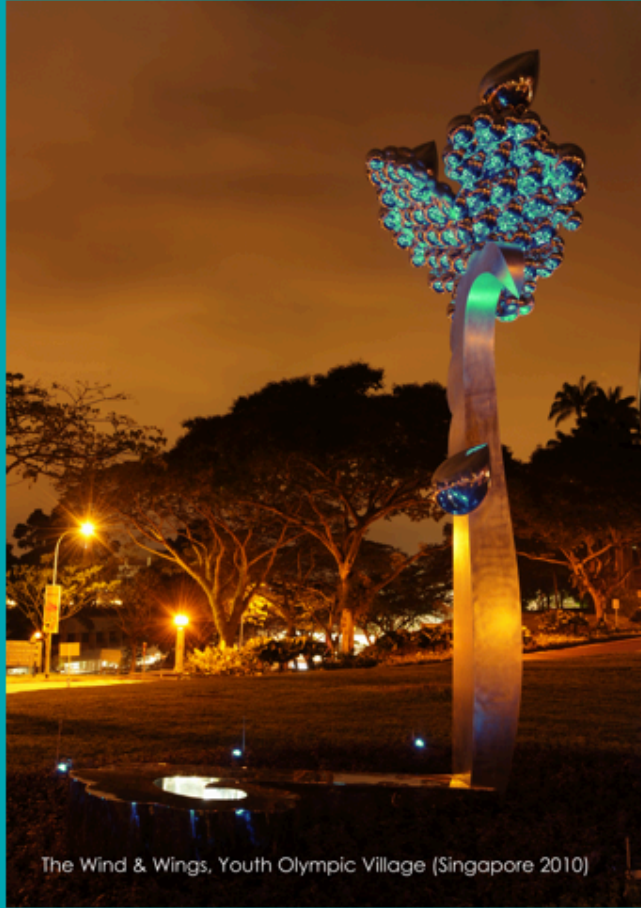


Frozen Wave at Antarctica



Tempted Mind, Hanoi, Vietnam, 2018

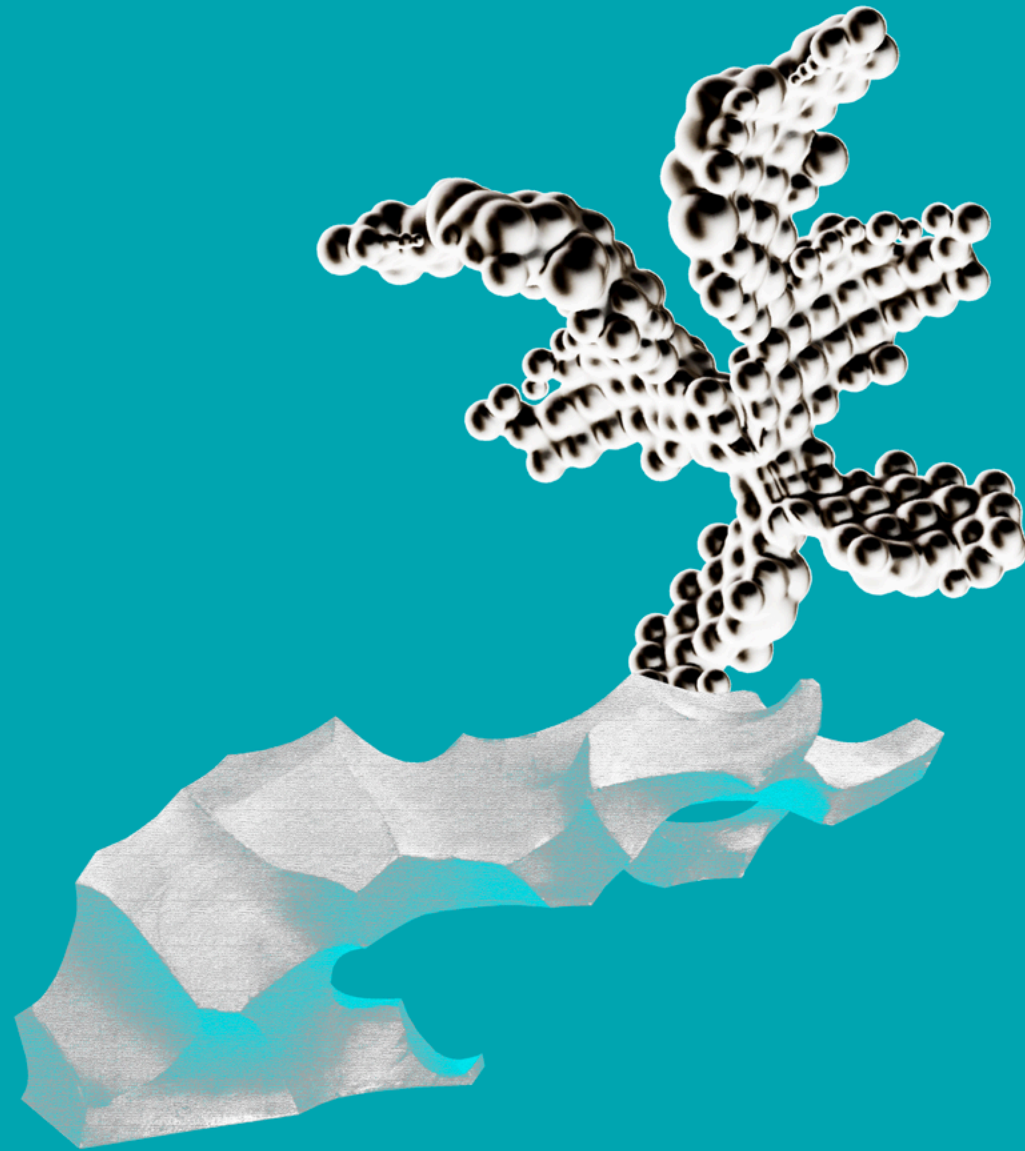
“Frozen Wave” - the stalled momentum of our dynamic daily activities due to the COVID 19 situation.





On another level, the physical form of the "Winter Tree" has been rendered with another abstract and metaphorical element, the "Frozen Wave".

We shall ride the wave again in the new normal.



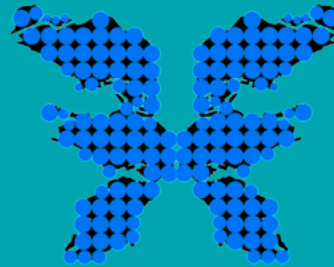
Frozen Wave & Winter Tree

Singapore Butterfly/Winter Orchid

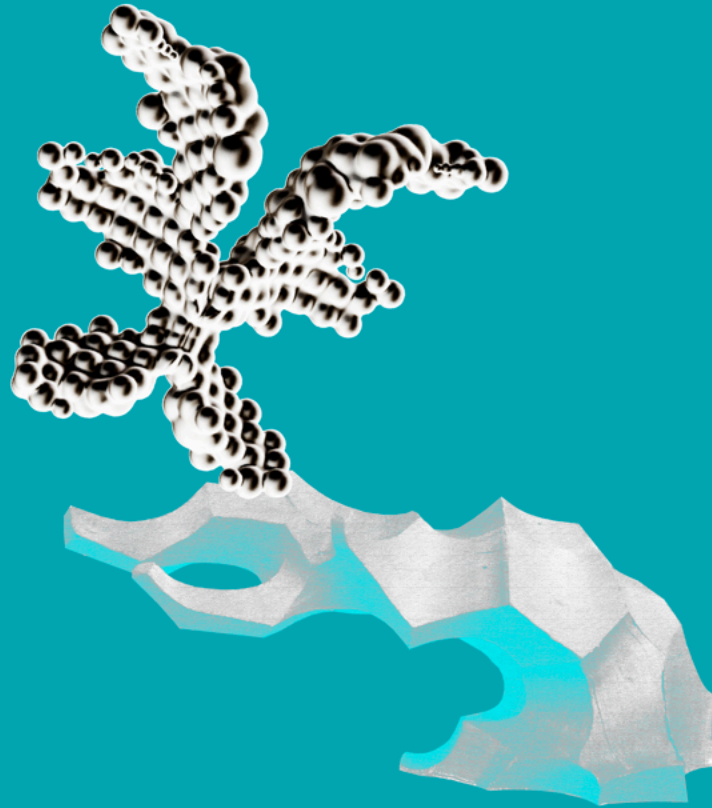
The Wings will be formed by a set of three Singapore Maps from 1950, 2002 and the proposed 2030; an organic and progressive growth of the physical size of Singapore Island through reclaimed land.

It forms a significant molecule formation, representing the people who resides in Singapore and help to shape the Singapore as what she is right now. With stainless-steel mirror finished, each and every molecule will reflect the image of visitor on the mirror surface; it will present a tremendous kaleidoscope-like pattern as whole to celebrate the harmonies and colourful living experience in Singapore.

Even as small as a 'red dot' on the world map, a small nation is capable of influencing the world by swinging the wings as the theory of the 'butterfly effect' suggests.



“No winter lasts forever; spring always finds a way”



In a tropical island state that does not experience the four seasons, winter and spring are but abstract ideas. The proposed sculpture is therefore based on a more abstract and metaphorical concept. Each of the wings is composed of countless mirrored hemispheres. With the beautiful arc that is like a curved mirror, it provides shelter while at the same time reflecting the life of the people standing under it. The migrant workers and the people who live in this country that they have helped built jointly form this kaleidoscope-like, solid stainless steel wings. In the cold winter of the epidemic, they look forward to and receives the arrival of spring together with bravery.