

A N1, Bultfontein AH, City of Tshwane, South Africa

B City of Tshwane, South Africa

47 min , 33.3 km

Light traffic (Leave at 4:24 PM)

Via Rust de Winter Road, D1333

· Toll on route

These directions are via Hammanskraal.
Travel on N1 north towards Polokwane.

GPS coordinates : -25.422394, 28.460690

Please contact Pierre to open the gate. Tel no +27 78 341 8381

A N1, Bultfontein AH, City of Tshwane, South Africa



1. Depart and head **north** on **N1** 3.9 km
• Toll road



2. At Exit **183**, head **left** on the ramp for **D734** toward **Boekenhoutkloof** 0.5 km
• Toll road



3. Turn **right** onto **D734** toward **Boekenhoutkloof** 0.4 km

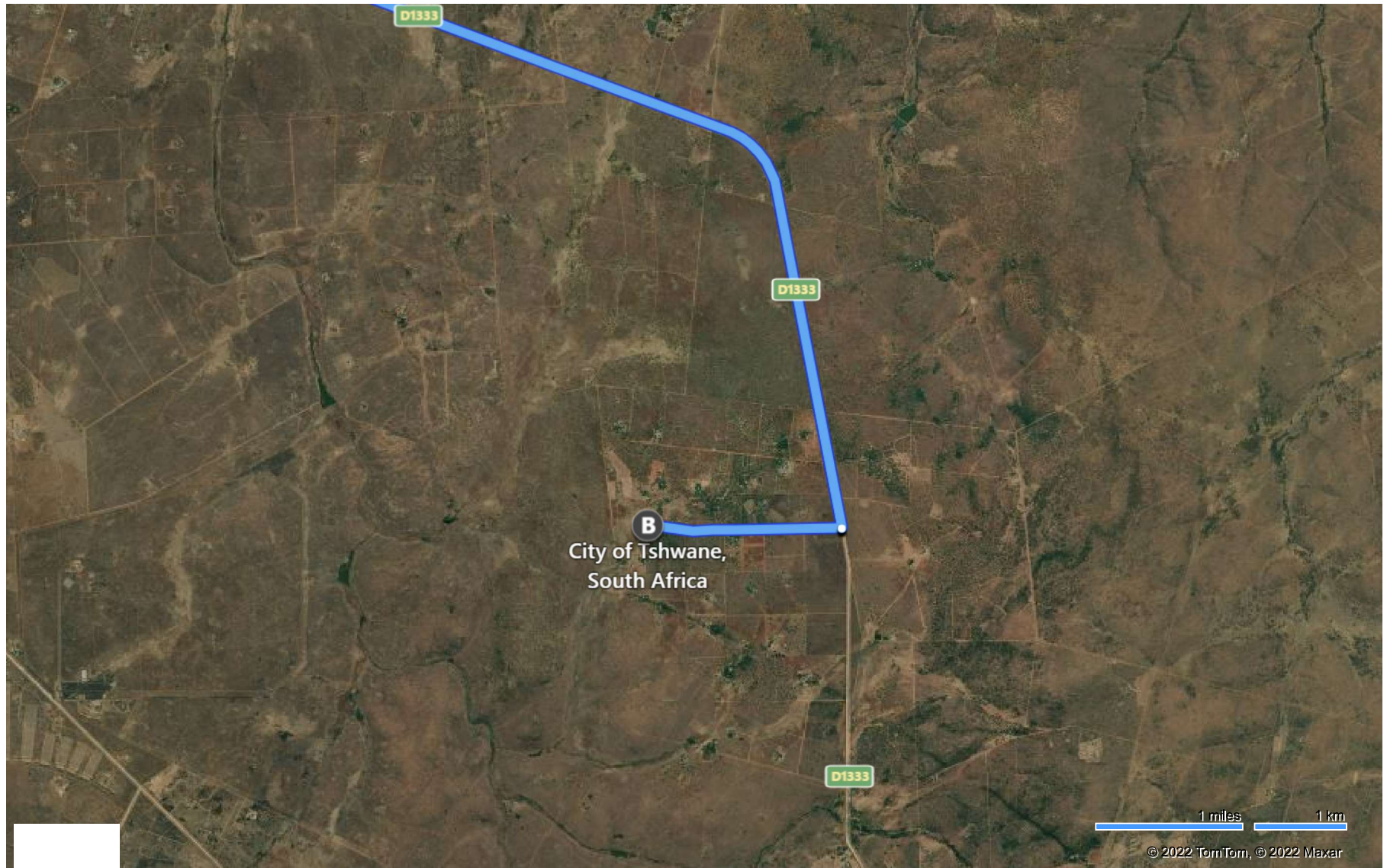


4. Turn **left** onto **Rust de Winter Road / D48** toward **Rust de Winter** 11.0 km, 21 min

You will Enter Dinokeng Game reserve. Please keep the gate pass as you will need it to exit.
Otherwise you will have to pay conservation fee!
Follow the road, pass Safari mall on left.

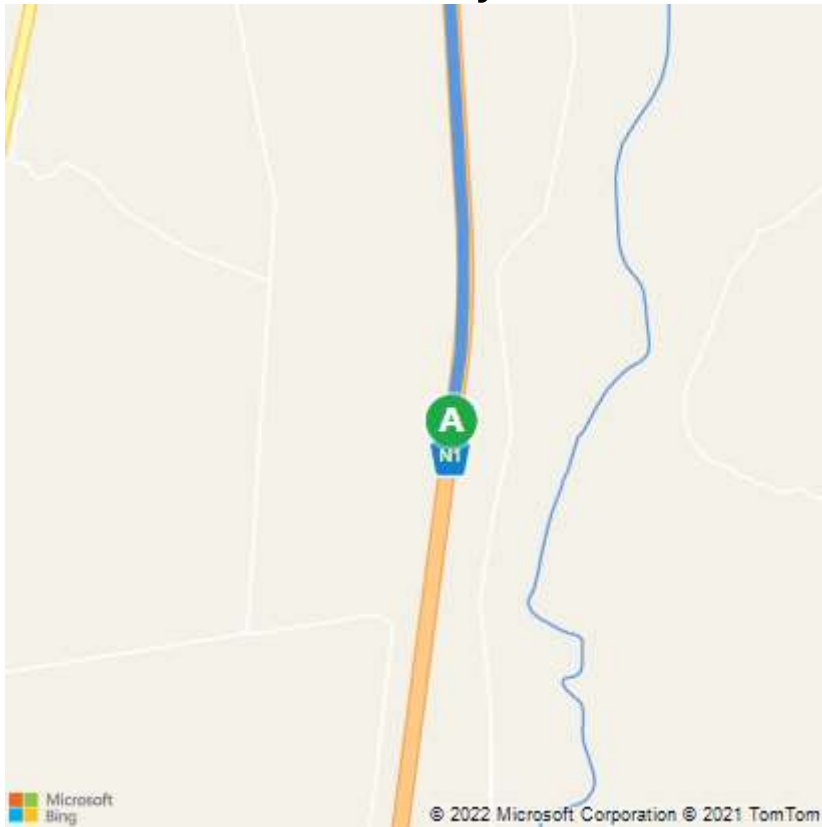
➤	5.	Turn right onto D1333 toward De Wagendrift • <i>Unpaved Road</i>	15.3 km, 17 min
		After you pass Halali Game reserve on left or entrance is about 1.5km on right	
➤	6.	Turn right • <i>Unpaved Road</i>	2.2 km
		At the end of the small dirt road you will see a green gate. This is entrance to Kudu Reserve. Please enter and ensure gate is closed. Turn right towards Letsikeri. Its the road that is about 45degrees to your right	
	7.	Arrive at your destination on the right The last intersection before your destination is D1333	

B City of Tshwane, South Africa



These directions are subject to the Microsoft® Service Agreement and are for informational purposes only. No guarantee is made regarding their completeness or accuracy. Construction projects, traffic, or other events may cause actual conditions to differ from these results. Map and traffic data © 2022 TomTom.

A N1, Bultfontein AH, City of Tshwane, Sout...



B City of Tshwane, South Africa

