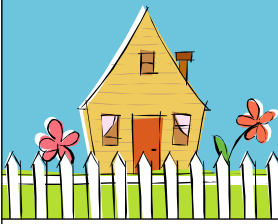


# Save Deer Run Newsletter

August 3, 2020 - Volume 2, Issue 8



## SPECIAL BCC DISTRICT 1 ISSUE: CANDIDATE BOB DALLARI

### ***Background to this interview and disclaimer:***

*In July 2020, Save Deer Run Citizen's Action Group invited all three candidates who qualified for the Seminole County District One Board of Commissioner's seat to complete a ten-question written interview. Each candidate received the same set of questions. We publish the candidate responses in their entirety. We have not edited them in any way. Bob Dallari was the first candidate to return his written interview completed. We have decided to publish his responses first since we received his first. His interview is presented in the SDR Newsletter - Volume 2, Issue 8. Matt Morgan returned his responses second. His responses will be published in the SDR Newsletter - Volume 2, Issue 9. Katrina Shadix initially indicated that she was willing to complete the questions and return them to us. However, she did not submit them before our publication deadline and has not sent them to SDR as of the publication date of this newsletter volume (August 3, 2020).*

*Bob Dallari is a candidate for the District One seat. He currently lives in Oviedo, which is in District One. He is running for the Republican nomination for the seat.*

*The Primary Election will be held on Tuesday, August 18, 2020. Florida is a closed-primary state. This means that only Registered Republicans can vote in the primary election between Bob Dallari and Matt Morgan. The winner of the Primary Election will run against Democrat Katrina Shadix in the General Election on Tuesday, November 3, 2020.*



## SAVE DEER RUN INTERVIEW WITH BOB DALLARI

### ***Please tell us a little bit about yourself. What do you want voters to know about your background?***

Originally from New York and a graduate of Rochester, N.Y., Institute of Technology (RIT). I am presently your Seminole County Commissioner District 1. I believe that being your county commissioner is about service and transparency not politics. I would be honor and a privilege to serve you the public for another four years.

Additionally, I serve as the Chairman for the MetroPlan Orlando Board representing Seminole County. I have also served on various local boards for Habitat for Humanity, Kids House of Seminole County Advocacy Center for Child Abuse, and Seminole County Arts Council. I am also a member of the Oviedo Citizens in Action.

I am employed by Walt Disney World for the past 18 years. I have been furloughed. I have called Oviedo my home since 1989 where I served on the Oviedo City Council prior to my election to the Seminole County Board of Commissioners. Among the causes I strongly support are: transportation; greenways & trails; sustainable growth, preservation of natural lands and wilderness areas; water conservation and safety.

I enjoy hiking, fly-fishing and photography - capturing outdoor natural landscapes.

***Why did you decide to run for the Seminole County BCC seat in District One?***

- a. There are developers from outside of the area trying continuing to try to develop sensitive lands to encroach into the rural boundary and to disregard our comprehensive plan for future development.
- b. With the downturn of the economy we need leadership and experience to move our county forward to get people back to work, to get paychecks back into people's hands, to help businesses get back on their feet and to bring a sense of normality.
- c. I feel that I have the experience from the great recession from 2007-08 to assist citizens and local business to get back on their feet and to provide stability in our economy.
- d. When it comes to development, I have the ability to say no these outside influences and have the tract record and experiences to tell these developers, no.

***What talents, experiences, or qualities do you have that will allow you to represent the residents of District One as their county commissioner?***

- a. The two main qualities that I pride myself on is to listen and to have empathy to understand what our citizen's problems are. I follow through with the things I work on and I'm determined to get things done.
- b. I have lived in our district since 1989 and know the area very well. To keep up with many of the issues, I routinely walk many of the roads and trails therefore seeing things firsthand. It is extremely important that your commissioner not only knows the area and issues but understands it.

***If elected as the BCC's District One commissioner, what will be the first thing you want to achieve once you have been sworn into office?***

- a. Keeping the Rural boundary and our Natural Lands protected.
- b. Work with local businesses to help them get our local people back to work.
- c. To ensure that our children are safe when they return back to school.

***What is your stance on changing the laws in Seminole County to allow development in areas currently protected by the voter-approved Rural Boundary?***

- a. My track record shows that I have voted to uphold the will of the voters in protecting and standing for the rural boundary as "IS". As your District One Commissioner I voted multiple times to protect the Rural Boundary.

***What is your stance when it comes to development of open and green spaces in Seminole County?***

- a. Seminole County is a great place to live, work and a great place to raise a family. People come here because of our open and green spaces, and our top-rated schools. It's important that we protect all of our open green spaces and our wetlands and ensure that they will be there for generations to come. That's why we're called *Florida's Natural Choice*. I take that slogan very seriously.

***Seminole County is currently in the process of gaining public input about potential changes to and revision of the Seminole County Land Development Code. Do you support changes to these laws or not? Please explain.***

- a. Our Land Development Code (LDC) is constantly being reviewed to see if updates are needed to meet with the changing times.
- b. It's important that people provide public input on what they believe works and doesn't work.
- c. I believe that we should continue to keep and protect our open space and provide proper assurances that they not only remain as is but to protect our environmentally sensitive lands.



E-mail address: [admin@savedeerrun.com](mailto:admin@savedeerrun.com)

Did you know there's a Facebook group where you can discuss matters about the golf course closing? Check us out!

[https://www.facebook.com/pg/SaveDeerRun/groups/?ref=page\\_internal](https://www.facebook.com/pg/SaveDeerRun/groups/?ref=page_internal)

We're on the Web!

See us at:

<http://www.savedeerrun.com/>

***Over the last few months, Seminole County has discussed the potential idea of buying the former Country Club at Deer Run in Casselberry to convert it into a passive recreation park. Do you support this idea? Why or why not?***

- a. I was the Commissioner that brought this to the table during our budget/utility work session. I not only brought it up, I fully support it. My plan includes saving the water from the aquifer by capping the irrigation wells. This would save the county a great deal of money allowing the purchase of the Deer Run and turn it into a passive recreation park. This would also increase the surrounding property values, as it is doing today at Rolling Hills.

***As a candidate, if you accepted campaign donations from special interest groups, how can you assure voters that you will remain impartial on issues that will come before you as a commissioner?***

- a. I don't accept money from special interest groups.

***What are the three issues you consider to be the most important facing Seminole County residents today and why?***

- a. Uncontrollable growth and protecting the Rural Boundary
- b. Getting our economy moving forward, getting people paychecks, and jobs back.
- c. Public safety and ensure our Sheriff's Department is fully and properly funded.



**My Dad Al who is now 90 and my sister Pat**