

WELCOME

La Paz County Entitlements – Conditional Use Permit and
Major Comprehensive Plan Amendment,
Case No. DRT2024-09

Public Meetings: September 18 and 19, 2024





Savion, a Shell Group portfolio company, is one of the largest, most technologically advanced utility-scale solar and energy storage project development companies in the United States. With a growing portfolio of more than 43.3 GW, Savion's diverse team provides comprehensive services at each phase of renewable energy project development, from conception through construction.

As part of this full-service model, Savion manages all aspects of development for customers, partners, and project host communities. Savion is committed to helping decarbonize the energy grid by replacing electric power generation with renewable sources and delivering cost-competitive electricity to the marketplace.

For further information, visit www.savionenergy.com



WHAT WE DO

We are actively advancing U.S. utility-scale photovoltaic (PV) and energy storage projects that help decarbonize the nation's electricity grid and deploy modern power to diverse markets at lower cost to customers.

With a genuine care for the communities with which we are privileged to partner, Savion delivers utility-scale solar and energy storage project development throughout the U.S.



OUR PROJECTS

43.3 GW

Total gigawatts of solar and energy storage projects*

31

U.S. states where we have projects

153

Current projects in various phases

* Under development, contracted, under construction, or in operation



WHO WE ARE

We currently have more than 200 employees with a vision for the transformation of the country's electricity supply to renewable resources.

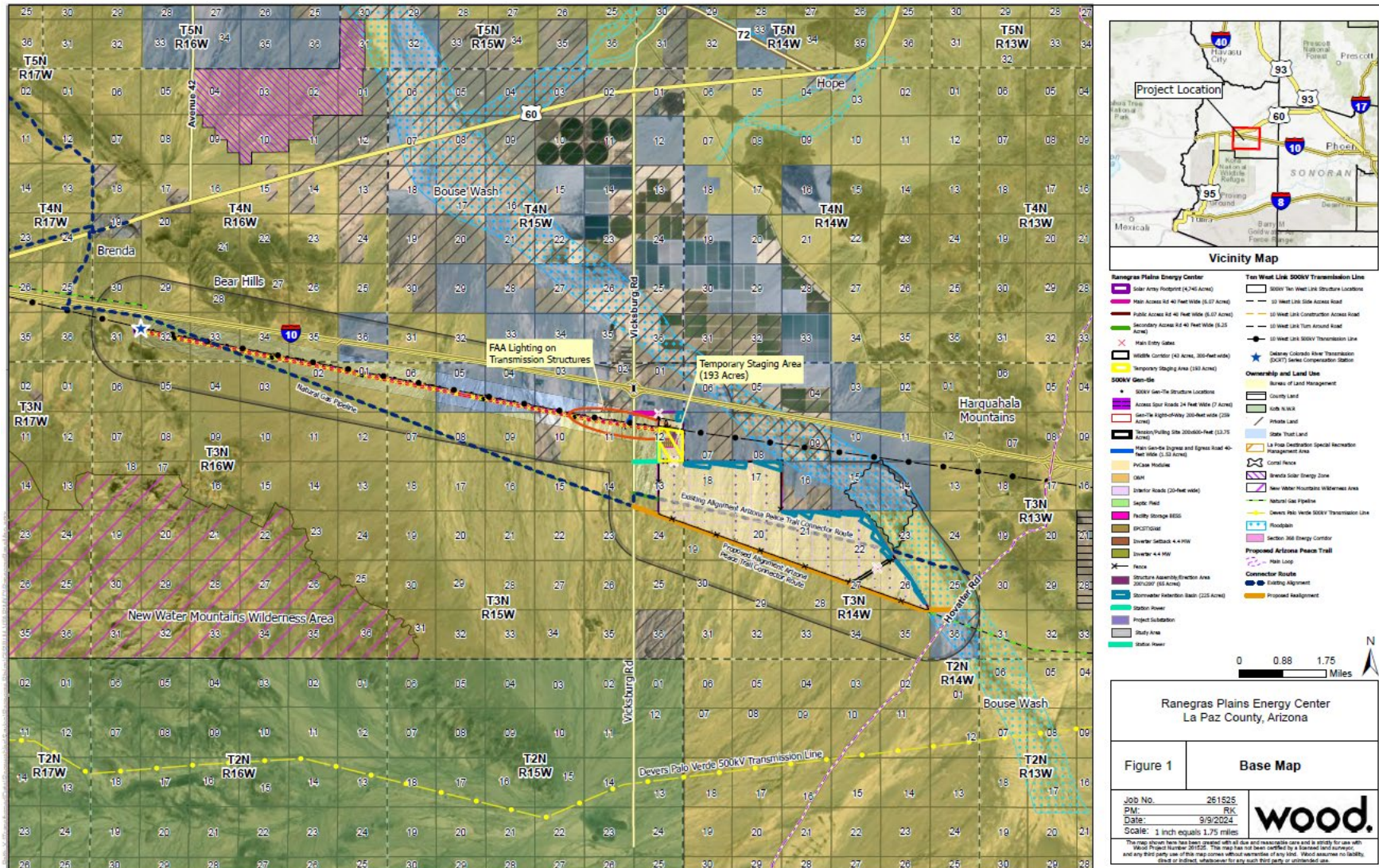
Project Information



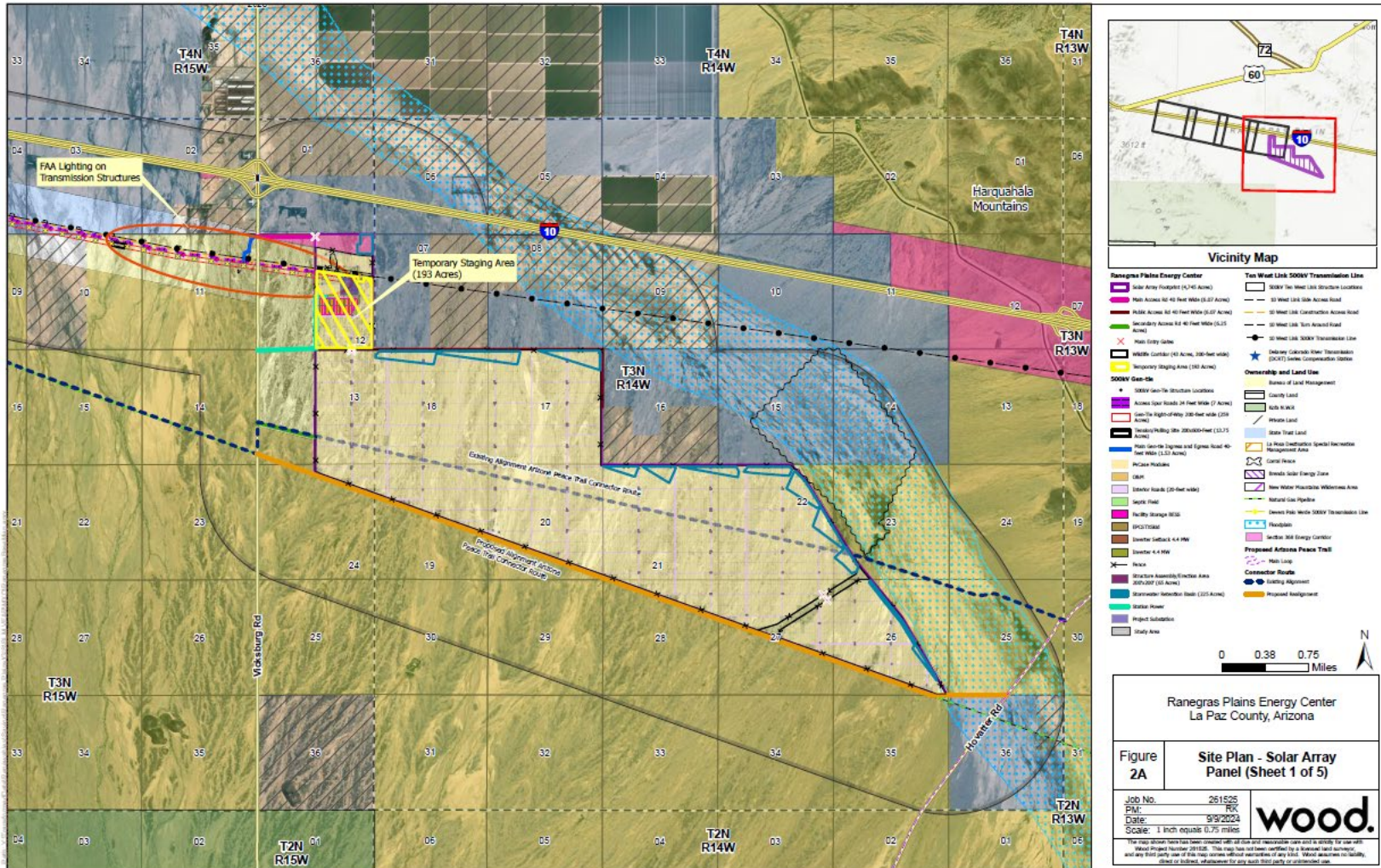
- An approximate 4,745 acre photovoltaic solar and battery storage project, located in La Paz County, Arizona in the vicinity of Hope and Brenda, and south of Interstate 10.
- 11-mile 500kV transmission line to the Desert Colorado River Transmission Series Compensation Station within a 200-foot right-of-way. Approximately 260 acres.
- 98% on Bureau of Land Management Land (Yuma Field Office) – some Arizona State Land Department State Trust Lands, and a small amount of private land.
- Currently in the National Environmental Policy Act (NEPA) phase with public Notice of Availability to Review Draft Environmental Impact Statement to be published in the Federal Register in December 2024.
- Anticipated La Paz County entitlements December 2024.
- Certificate of Environmental Compatibility hearings before the Arizona Corporation Commission February 2025.
- Final Environmental Impact Statement and Record of Decision from the BLM August-September 2025.
- Construction to begin in 2027 and will require 36 months to complete both phases.

Project Map

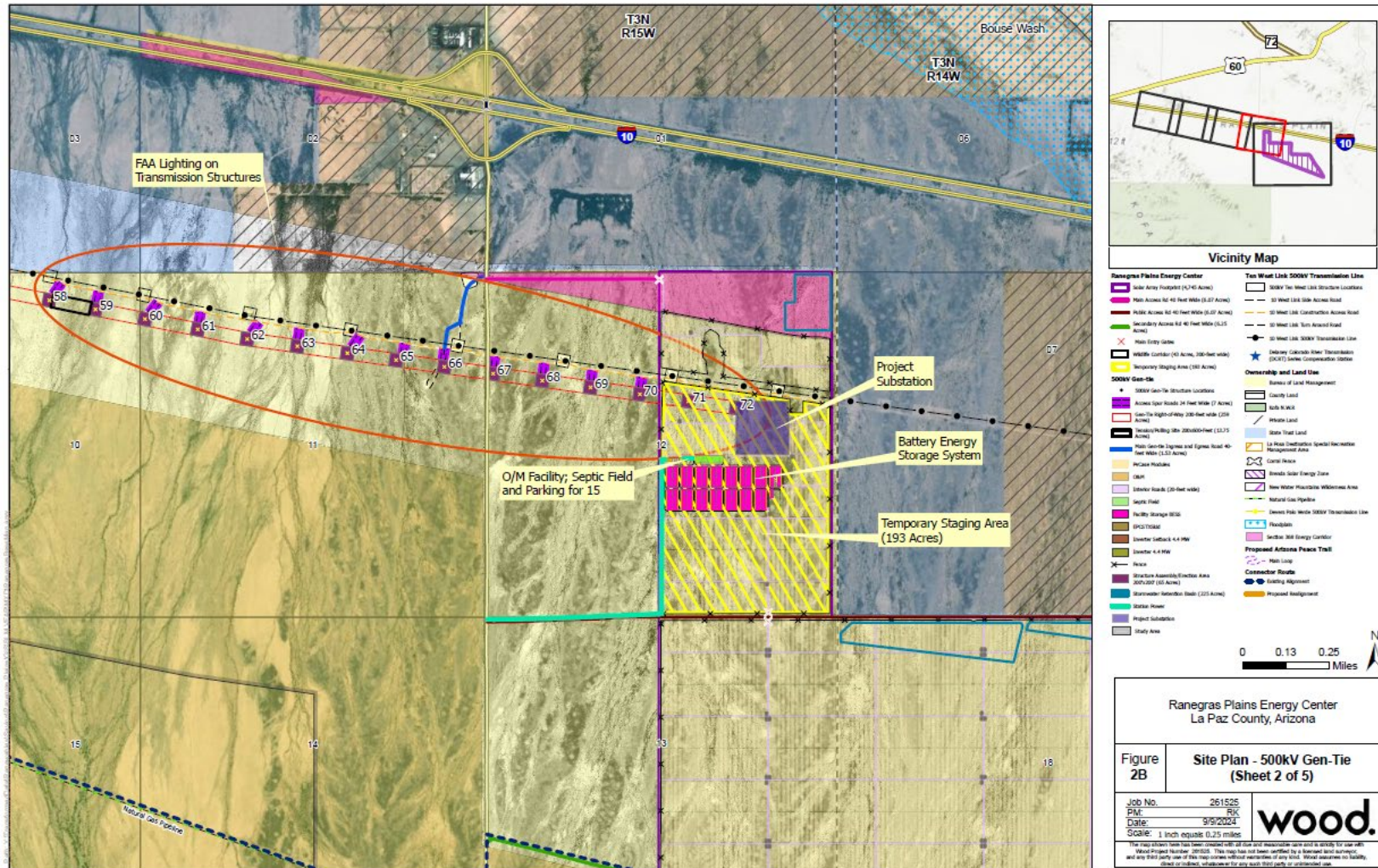
RANEGRAS PLAINS ENERGY CENTER



Project Map



Project Map



VISUAL SIMULATIONS


RANEGRAS PLAINS ENERGY CENTER



Existing



Simulation





Photograph taken from elevation 3 looking towards the Solar Array.


Ranegras Plains Energy Center
La Paz County, Arizona

| | |
|----------|---------------|
| Figure # | Simulation #1 |
| Date | 02/20/21 |
| Project | 000001 |


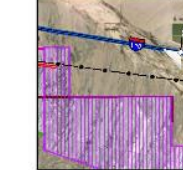
wood



Existing



Simulation





Photograph taken from elevation 10, looking towards the Solar Array.


Ranegras Plains Energy Center
La Paz County, Arizona

| | |
|----------|---------------|
| Figure # | Simulation #2 |
| Date | 02/20/21 |
| Project | 000001 |



wood



Existing



Simulation

Photograph taken from Vicksburg Rd, looking towards the Solar Array.

Ranegras Plains Energy Center
La Paz County, Arizona

| | |
|----------|---------------|
| Figure # | Simulation #3 |
| Date | 02/20/21 |
| Project | 000001 |

wood



Existing



Simulation




Photograph taken from the Natural Gas Pipeline towards the Solar Array.

Ranegras Plains Energy Center
La Paz County, Arizona

| | |
|----------|---------------|
| Figure # | Simulation #4 |
| Date | 02/20/21 |
| Project | 000001 |

wood

Environmental Considerations



- **Draft Biological Evaluation completed Spring 2024. Consultation with U.S. Fish and Wildlife Service is forthcoming.**
- **Cultural resource reporting is complete, and the Historic Properties Treatment Plan is being drafted. Formal BLM consultation with Native American tribes is ongoing.**
- **U.S. Army Corps of Engineers reviewing approved Jurisdictional Determination.**
- **Land use and visual studies have been completed.**
- **Soils and geomorphological studies are complete.**
- **Plan of Development is being finalized.**
- **Project incorporates a 300-foot wide wildlife movement corridor within the array.**
- **Project will utilize a wildlife-friendly fence with 8" gap at bottom for most of the site.**
- **The project will require approximately 2,300 acre-feet of water for construction. Two acre-feet over the operational lifetime of the project will be required. Seasonal rain will wash the panels.**
- **Project realigns Arizona Peace Trail Connector Route along natural gas pipeline.**
- **Less than 20% of the site will be graded. Most all vegetation will be allowed to grow back after construction.**
- **All known cultural sites will be avoided and permanently fenced.**
- **Disposal or recycling of panels and batteries after decommissioning will occur at approved facilities.**

Engineering and Pre-Construction

- Finalize engineering and procurement
 - Finalize IFC design drawings
 - Power system studies
 - Mechanical Loading Assessments
 - Stormwater Management and Building permits
- With local coordination to finalize:
 - Transportation Plan
 - Road Use Maintenance Agreement (RUMA)
 - Emergency Response Plan
 - Finalize Plan of Development

Early Construction

- Mobilize on site
- Laydown/staging area development
- Haul route assessments and improvements
- Resource Protection

Site Work

- Install stormwater management devices
- Construct perimeter fence
- Pile/Tracker/Module/Inverter installation
- AC collection and DC cable installation
- Project Substation - Transformer, structures, breakers, lightning protection, control room, security fencing , battery energy storage system
- Interconnection Switchyard

SOLAR PROJECT CONSTRUCTION

RANEGRAS PLAINS
ENERGY CENTER



Removal of Facilities and Restoration of Project Land

- Solar is a temporary use and land can be restored to its original condition and prior use after decommissioning
- Lease agreements require the removal of equipment and restoration of the land when operations permanently cease
- With limited exceptions, aboveground infrastructure and buried structures are removed to a depth of 3 feet below surface and moved offsite for recycling, reuse or disposal
- Restoration activities will include returning the soil to its pre-development state including decompaction.
- Decommissioning Plan will be filed with BLM outlining cost of decommissioning, updated prior to start of construction and reevaluated 5 years prior to decommissioning.
- Performance bond will be posted covering the cost of decommissioning

Current Work and Schedule



- Continue tribal and BLM review of Class III reports for array and 11-mile gen-tie
- Complete Plan of Development and required best management practice plans
- File Certificate of Environmental Compatibility with Arizona Corporation Commission
- Complete La Paz County Entitlements
- Issue Draft Environmental Impact Statement for public review
- Conclude consultation with Native American Tribes, U.S. Army Corps of Engineers, and U.S. Fish and Wildlife Service
- Issue Final Environmental Impact Statement and Record of Decision (August-September 2025)



ACC = Arizona Corporation Commission