



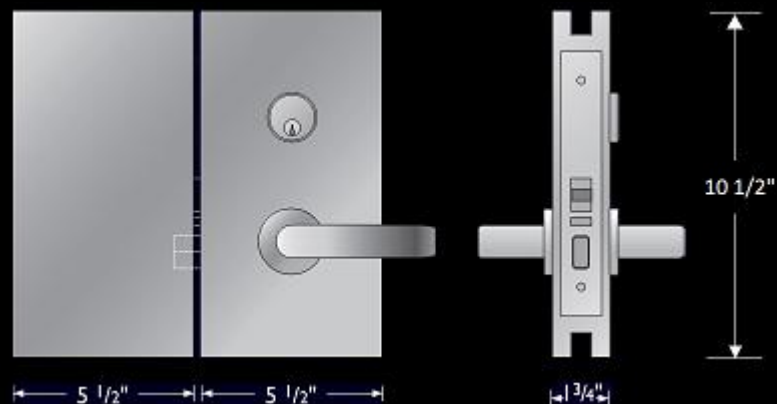
Mortise Patch Locks

FOR FRAMELESS GLASS DOORS

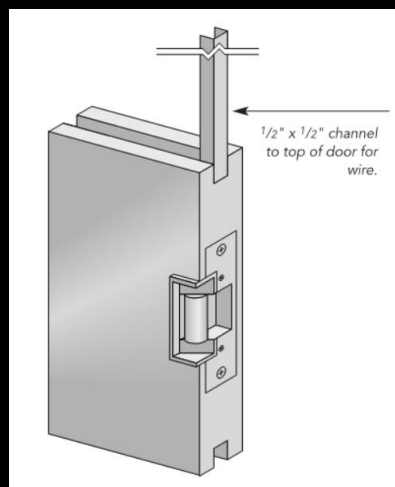
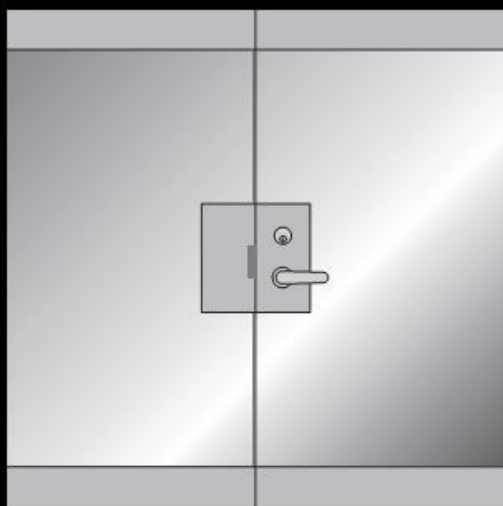
GBI Industries Inc. 1 Prince Andrew Place, North York, Ontario, Canada M3C 2H4

www.gbipatchlock.com

Features



- Heavy duty one-piece high density polyethylene housing clad with .050 GA wrought brass, bronze or stainless steel
- Designed to fit standard 1/2" glass doors prepared with rectangular cut-out as per template
- Incorporates an ANSI Grade 1 mortise lock
- Locking functions have a deadlatch feature for maximum security
- Dead bolt functions have a 1" throw bolt
- Locks will accept most other manufactures standard 1 1/8" mortise cylinders allowing keying into most buildings master key systems.



- Patch Strike Boxes are available with Electric Strikes for access control or automatic door operator applications

Lever Designs



W



E



P



B



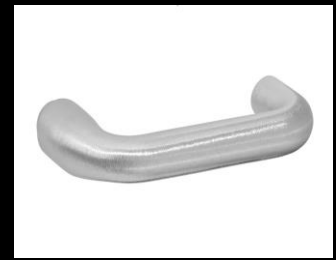
L



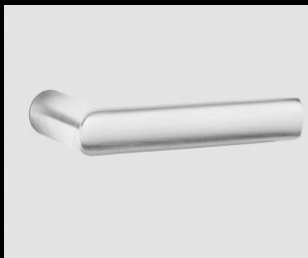
F



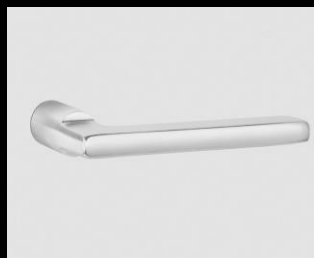
A



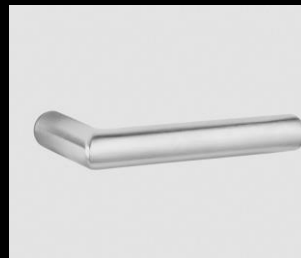
J



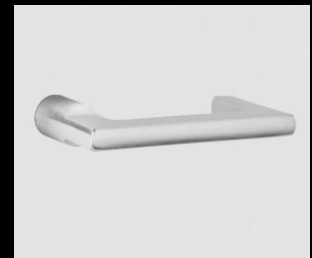
MB



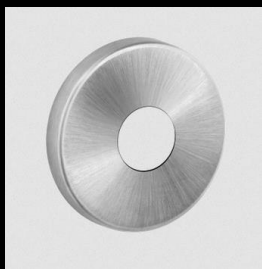
MD



MI



ND



LN

All levers are shipped with standard LN Roses

Functions — Active Leaf

Function	Code	Description
Passage	P1215	Latchbolt by either side
Storeroom (for use with electric strike)	P1204	Guard bolt deadlocks latch bolt Latchbolt by lever inside or key outside Outside lever is ridged at all times
Classroom	P1237	Key outside retracts the latchbolt (locks and unlocks outside trim) Trim inside always retracts the latch bolt
Entrance	P1243	Key and thumbturn both retract and project the deadbolt Trim outside is locked by toggle or projecting deadbolt Trim outside is unlocked by toggle only Key retracts both latchbolt and deadbolt, trim outside remains locked Trim inside always retracts latchbolt and deadbolt simultaneously
Office/Entrance	P1255	Key outside retracts the latchbolt Trim inside always retracts the latchbolt (outside trim remains locked) Trim outside is locked and unlocked by the toggle only
Electrified Lock	P1271-RX	Power ON, unlocks outside lever. Voltage needs to be specified (12VDC or 24VDC) Key outside retracts latchbolt Lever outside retracts latchbolt, except when locked Lever outside can only be locked electronically Lever inside always retracts latchbolt
Working Dummy	P1297	No Latch bolt Levers are not operable

Functions — Inactive Leaf of Pair of Doors

Function	Code	Description
Strike Box	P1294LL	Standard Strike Box
Strike Box with Electric Strike	P1294ES	Strike Box complete with ANSI Grade 1 fail-secure electric strike Comes with upper and lower continuous channels to conceal wiring Dual voltage 12VDC or 24VDC
Strike Box with Electric Strike	P1294ES-LM	Strike Box complete with ANSI Grade 1 fail-secure electric strike Come complete with upper and lower continuous channels to conceal wiring Latch bolt monitor and Dual Voltage 12VDC or 24VDC

Note: Strike boxes are not available with lever trim

Finishes

C32 POLISHED STAINLESS STEEL



C32D SATIN STAINLESS STEEL



BSP BLACK SUEDE POWDER COAT



C10B OXIDIZED OIL RUBBED
BRONZE



C26 POLISHED CHROME



C26D SATIN CHROME



C3 POLISHED BRASS



C4 SATIN BRASS



C10 SATIN BRONZE

