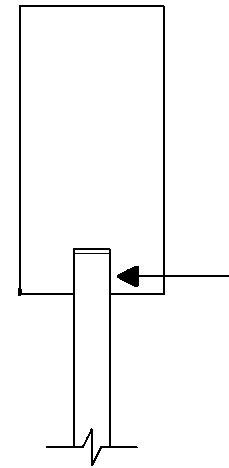
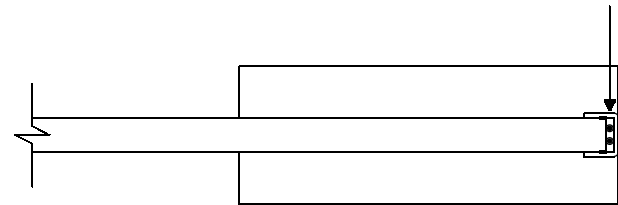


DETAIL A



Cut channel to fit inside top and bottom rail.

DETAIL B



Allow 3/16" for channel and wire so that lock and channel are flush.

NOTE: SEE TEMPLATE 1200-R1 FOR ADDITIONAL INFORMATION



GBI INDUSTRIES INC.
 52 PRINCE ANDREW PLACE
 NORTH YORK, ONTARIO, CANADA
 M3C 2H4
 T 416-391-5555
 F 416-391-5065

DRAWING TITLE: GBI ELECTRIC STRIKE PATCH LOCK TEMPLATE

TEMPLATE NUMBER: 1200-ES-R1

DATE: APRIL 15, 2003

SCALE: NOT TO SCALE