

# **+Letters to Leo Milden from Incarcerated Japanese-Americans**

*In chronological order 1942-1946*

2021.001.016 by Ed Natori 05/14/1942	3
2021.001.001 by Pete Taketa 05/17/1942	4-5
2021.001.017 by Torao Sorakubo 05/24/1942	6
2021.001.018 by Torao Sorakubo 06/10/1942	7
2021.001.002 by Tosh and Mas Inatsu 06/16/1942	8-9
2021.001.019 by H Shimogaki 06/25/1942	10-11
2021.001.020 by Torao Sorakubo 08/08/1942	112
2021.001.021 by H Hashiguchi 08/13/1942	123-15
2021.001.022 by Tom 08/23/1942	156-17
2021.001.023 by Hashiguchi 08/27/1942	178-19
2021.001.003 by Henry Tsubota 09/10/1942	20
2021.001.004 by Keo Murakami 10/07/1942	21-22
2021.001.024 by Shimogaki Family Before 10/21/1942	23
2021.001.025 by M Hashiguchi 10/21/1942	24-25
2021.001.026 by Haruki Shimogaki 10/27/1942	26-27
2021.001.005 by Mits and Muts 10/29/1942	Error! Bookmark not defined.8-29
2021.001.015 by George Matsuno 11/22/1942	30
2021.001.027 by Torao Sorakube 11/30/1942	31

<b>2021.001.028 by Matsuoka Family 12/12/1942</b>	<b>32</b>
<b>2021.001.006 by Torao Sorakubo 02/23/1943</b>	<b>33</b>
<b>2021.001.007 by Keo Murakami 02/28/1943</b>	<b>34</b>
<b>2021.001.029 by Chuck Furuta 03/13/1943</b>	<b>35-37</b>
<b>2021.001.030 by James Matsuoka 05/04/1943</b>	<b>38</b>
<b>2021.001.031 by Chuck Furuta 05/26/1943</b>	<b>39-40</b>
<b>2021.001.008 by Chuck Furuta 12/20/1943</b>	<b>41-43</b>
<b>2021.001.009 by Frank Takehita 03/10/1943</b>	<b>44</b>
<b>2021.001.011 by War Relocation Authority 08/11/1943</b>	<b>45-46</b>
<b>2021.001.012 by K Hanada 01/08/1947</b>	<b>47</b>
<b>2021.001.013 by Min Tsubota 07/20/1950</b>	<b>48</b>
<b>2021.001.014 by Barbara (Milden) Cain 09/01/2005</b>	<b>49</b>
<b>2021.001.010</b>	<b>50</b>
<b>Index of writers plus references in letters</b>	<b>51-65</b>

May 22, 1942 Japanese citizens of Auburn assembled to board a train headed to Pinedale Assembly Center. Within the next few days, citizens of Kent, Bellevue, and Seattle were forced from their homes to concentration camps.

**2021.001.016 by Ed Natori 05/14/1942**

May. 14. 1942  
Pinedale Assembly Center  
Pinedale California

Dear Leo Milden,

Just a line to let you know that we have finally arrived here at the assembly center and are now pretty well settled.

I thought it wise to advise you of my address which is:

Barrack D6 Apt #2  
Pinedale Assembly Center  
Pinedale California

In case there may be some matter on which you would like to get in touch with me.

I am particularly concerned of the deal and would like very much to know how you are progressing, especially the financial end of it. If you could drop me a line regarding same, I would appreciate it very much. You are the only one that I am depending on and I know that you will do the everything to see the thing through as per arrangements made prior to my departure.

Mr. Geo. H. Brandt, whom I mentioned in my instructions to you, came to see us off at the train so I was able to give him advice regarding the deposit of the balance due me. So you won't have any difficulty on that score.

Thanks again Leo and until the next letter - good luck to you.

Ed Natori

**2021.001.001 by Pete Taketa 05/17/1942**

Block D Barrack 12 Apt. 4  
Pinedale Assembly Center  
Pinedale, California  
May 17, 1942

Dear Leo,

Well, Leo how is everything at home? We are getting used to the camp. About everyone in the Valley is around here.

The trip from Renton was one hard trip. It was night when we went through Washington. It was around 1 o'clock in the morning when we hit Portland. In southern Oregon it was snowing, it looked pretty good. To go over the mountains of Oregon they put on an extra engine to pull it over. Then to go down the mountains the brakes were always screeching because some of the hills were pretty steep. When we reached the flats it was dark. Around Sacramento it was breaking dawn of Tuesday. It looks plenty dry and the grass was all dried up.

It gets pretty hot around here in midday. But it is cool in the morning. The wind blows from the east over the Sierra Nevadas and there is still snow on them. The dust gets really bad when the wind blows and when the dust blows it really blows.

I am working in the warehouse and it is cool during the day there. There are 11 men on our crew counting the foreman. Our bosses are two white fellows and they look pretty hard boiled but boy they are swell, they kid around us all the time and the jokes they tell boy, some of them are [*humorous*].

My work is supposed to be a warehouse typist but there isn't any forms yet so I can't do any typing. There is too much red tape to get anything. Our bosses get sore sometimes because we have no hand trucks to bring out the foodstuff. This work is about the hardest because we do a lot of lugging and that is work that is really work. Sometimes we don't have any rest because there is so [much] food to bring to the mess halls. There are 6 of them open now and when the camp is full there will be ten of them open. That means we will have to bring enough food to feed about 5,000 people and that of lot of foodstuff to be handled by 11 men. Actually there are [*six*] to truck the stuff around. I being a typist, Geo Ikegami is a receiving clerk and there are two inventory

men. Everyone on our crew really works and sometimes we get pretty sore because we only get fed as much as those who don't work or the same as a little kid. All of us in the warehouse are in our twenties and everyone has a heavy appetite and most of us are hungry long before time to quit. Once we only had soup for lunch and everyone of us raised so much hell with our bosses that I think we got some results because they are feeding us pretty good now.

Everyone in the warehouse is a swell bunch of fellows. We kid around plenty and work like hell too.

My kid brother Harry is a dishwasher in the mess hall and boy that's some job. But he likes it a lot. George, my other brother, is supposed to be an [*electrician's help*] but he had to set up beds and put on mattresses so that the Oregon bunch could have a place to sleep on when they arrived.

Well there is much more to write, Leo, so I'll say so long for a while. Hope you'll write so that I'll know something about home. If you have time, will you go take a look at the farm and see how Wilkinson is getting along, I hope he doesn't make a mess out of everything?

So long Leo,

Pete Taketa

P.S. Address me as follows:

William Taketa

Block D Barrack 12 Apt. 4

Pinedale Assembly Center

Pinedale, California

**2021.001.017 by Torao Sorakubo 05/24/1942**

May 24, 1942

Dear Leo:

We finally got here and just recuperated from the long train ride where we got very little sleep. This camp hasn't impressed us in any too good of a way because of the hot weather and dust but if we get used to it we might feel differently. The housing and food is adequate and the family so far is [in] the best of health. Still in all I wish I was back in Washington farming and barely making a living than living out here where we just sit around [and] breathe the dusty air. I've signed up for work but haven't been assigned to any work as yet. We're just getting settled so haven't much to write about.

I hope that your farm enterprise is getting along alright. Please let me know if you have sold our truck and by the way I haven't as yet been paid for the labor when we cut lettuce. This also included Ishida's labor. Please talk to Van and send a check for the labor. If you have banked any money in my bank account, ask the bank to notify me.

Hoping that this letter finds you and yours in good health and very prosperous I remain,

Most sincerely yours,

Torao Sorakubo  
Pinedale Assembly Center  
Barracks E1 Room 3  
Pinedale, California

**2021.001.018 by Torao Sorakubo 06/10/1942**

June 10, 1942  
Pinedale, California

Dear Mr. Milden,

The weather around here is pretty hot. It is really dusty. Hope you are feeling fine. Wonder what you have done with our car and greenhouse. And by the way we have as yet not received payment for the work we did during lettuce time. As you may know we do not make any money down here but we spend quite a bit. Those who are working make about \$0.94 an hour. Hope you have been successful in your present job. I sure miss the good old Bellevue strawberries. I heard it was raining quite a bit down that way. Boy if we see a drop of rain down here we're lucky. How are the peas coming along? Did the cauliflower turn out successfully? I'll bet you wished there was more cauliflower on our place. Well nothing new happens around here so I can't write much. I wrote to Doc as soon as I got here but as yet have received no answer. Hope you and the family are feeling fine.

Yours sincerely,  
T. Sorakubo

From T. Sorakubo  
Block E Barrack 1 Apt. 3  
Pinedale Assembly Center  
Pinedale, California  
Fresno, Jun 12.

**2021.001.002 by Tosh and Mas Inatsu 06/16/1942**

Block D Barrack 40  
Apt 1  
Pinedale Assembly  
Center  
Pinedale, Calif.

Dear Mr & Mrs Milden;

How are you all? So sorry we didn't write sooner. How are your children? We are fine.

We like this camp & don't mind it at all but we hope we can come back to Bellevue.

The camp's divided in sections & we live in D section or section 4. There are shower rooms, wash rooms, mess hall & lavatory in each section. It's nice and it could be worse.

How are the Bellevue vegetables coming along? Are they expensive like we hear?

The Bellevue people seem to be quite separated in this camp, but the Matsuzawas, Hirotake, Matsuoka, Hayashidas, & Mizokawas are close to us. They aren't real close but it's only about 2 or 3 blocks away & we feel pretty good. We were certainly lonesome when we first arrived here but not its really not bad at all, especially with Bellevue people here.

Mas is the fireman chief here, can you beat that? [Well] so is [Tokio] Hirotake & Joe Matsuzawa. Most of the boys are all working here.

The food here has [improved] a lot here & it's not so bad at all. The water is always lukewarm here & naturally it doesn't taste very good.

Mas's father in Colorado passed away Monday & everything has been quite hectic here. He got a pass to go to Colorado from here to the funeral but the pass came too late so he did not go.

Well, we hope to hear from you soon. Mas is anxious to hear about the vegetable situation over there.

We have a pretty large room here & a nice bed & cotton mattress. The other Bellevue folks that came here got straw mattresses & it's really terrible.

Sincerely,  
Tosh & Mas

P.S. Write soon!

Envelope:

Mr. & Mrs. M Inatsu  
Block D barrack 40 Apt 1  
Pinedale, Assembly Center  
Piendale, Calif.

Mr. & Mrs. Leo Milden  
Kent, Washington

Fresno Calif Jun 16, 5 PM, 1942

**2021.001.019 by H Shimogaki 06/25/1942**

Pinedale, Calif.

June 25, 1942

Hello Leo:

How is everything nowadays? Did you receive my letter of about 25 days ago? I was wondering because I did not receive a reply. Probably you were so busy you did not have time for any letter writing.

How has it been on the farms so far? Everything go somewhat as expected? How was the lettuce harvesting? Did Van get to harvest all? How do you think he made out? How is the peas coming along? About the strawberries? With the adverse weather you had during berry season it sure ruined the crop, didn't it? I received some other letters stating it rained darn near every day. Berry and pea prices are pretty good now aren't they? How are the late plantings progressing? How are the celery and tomato coming along? Do you think these will be as years gone by or better?

What has been planted in that section we were occupying, tomato and corn or something in that line? About the Midlake section? About how many acres of tomato has Van put in, of corn and beans?

How has the labor situation been thus far? I notice in the paper a bunch high school kids went out to the farms during the week-ends. How were they? I also noticed that Van had to dish out quite a bit of cold cash for transportation back for quite a lot of high school kids he couldn't place. Certainly took it on the chin that time didn't he. Now that school has let out I guess he hasn't any trouble getting help or has he gotten Indians as he was saying. If he did get Indians how are they in working? Did he get them from Vancouver? How many, if any?

How are the other farms getting along? That is the individual owned ones?

Leo, if you have any time could you send me the padlock and magic slats for me. Magic slates are obtainable at any drug stores. So far we do not know where we will be relocated. Rumors has us going to Arizona. What kind of place this is we do not know. We hope it is not as hot and dusty as it is here. When we are going we do not know. It probably will be pretty soon as all the other assembly center are being rapidly vacated.

Well hoping to hear from you in the near future.

Sincerely,  
H. Shimogaki  
E-30-2

P.S. Folks give their  
best regards to all of you.

**2021.001.020 by Torao Sorakubo 08/08/1942**

Tulelake, Calif

Aug. 8, 1942

Dear Leo,

Not having heard from you, I don't know how your farm enterprise is getting along but I hope for the best. We here are all getting along with the best of health. We've been here at Tule Lake about 20 days & so far it's pretty good. It's similar to Pinedale here but it's built & run on a much larger scale. This place here is reclaimed land from Tule Lake. The surrounding area is a range of low mountains, barren and dry. Close by we can also see the snowy cap of Mt. Shasta.

This camp is to be self sufficient & self governed. Crops are raised for camp consumption & factories are to be built for manufacturing various products to be used by the government.

Here work is easy but back where you are work must come without holidays. Busy days seem to be ahead of us. Please write us of how you have handled our business in regards to our truck and how you have rented our [*pipes*]. As this is urgent, please send a reply right away. Hoping that this letter finds you and yours in the best of health, we remain,

Sincerely,

Torao Sorakubo & Family

P.S. We haven't as yet received pay for our wages for harvesting lettuce.

**2021.001.021 by H Hashiguchi 08/13/1942**

Tule Lake WRA  
Newell, Calif.  
Aug. 13, 1942

Dear Friends,

Many many thanks to you for your letter which we greatly appreciated very much. Well it's almost a month since receiving your letter but as it almost our departure from Pinedale, we just get leaving it off in writing to you. Upon reaching here in Tule Lake Reception Center, we have been very busy. Muts got a job the afternoon he got here and this job keeps him very busy. He has to work for the community and see that everything does go smoothly and what the people [*squark*], tries to [*gin*] that up. It really was a hard work but is going very smoothly these days. But the meeting and parties are keeping him very busy. Please accept our apology for not being more prompt in answering your letter.

Tule Lake center is a very large camp holding about 16,000 people and are still expecting about 500 more people. Some of the Bellevue people live directly on the other side of the camp and that really is a long walk for us.

It's about 2 ½ miles from one end to the other and the hospitable, administration, and ect. buildings are located in the center of the camp. Naturally, they have taxi service but everybody cannot make use of it, just the important people. Hospital ambulances makes rounds of the camp to those who must go to hospital but can't walk like mothers with children & pregnant women. There are 64 blocks in the camp with which they are divided into 7 wards. There are 17 barracks to a block with a mess hall, shower room, recreation hall, and laundry and ironing room besides. Some barracks have 6 apts while some has 5 apts. The apartment are roomy but until they get the plaster boards and our stoves put in, it doesn't feel like a home. The evenings are very cold while during the day it is very hot. We expect the winter to be very cold. On all sides of the camp are big high mountains and also in the yonder we can see the beautiful Mt. Shasta. It really is a beautiful scenery.

How's everything turning out in Bellevue? We sure miss those delicious fresh vegetables and those fruits of ours. Does somebody live at our place? Hey Leo, is it too

much trouble for you to send us up some of my fruits? Pick them a little green and I'm sure it won't spoil.

How I can see our Italian prunes, peas, and peaches hanging on the tree. How we did love those fruits and haven't seen any here. Oranges and dried fruits are the only ones here at the canteen. We received a few peaches from a friend who got them sent from his own ranch. How [are] our tomatoes coming along? Sure wish we were home to help you. I know what a [*bead able*] you must love. [*Each of from Idaho*] and what not. Well don't work too hard. Does Van still keep an interest in the farms? As I hear, the Neilem Farm and Produce Inc. are selling a lot of tools, trucks and what not. What really is happening? Are they going to quit farming? We sure get homesick for home. Hoping the war will be over soon so we can go home and live freely again.

My mother doesn't want to sell the piano and so we will lend it to you for the duration. I hope you will all take good care of it for us. How are the rest of our furniture and what not in the house? I hope they will not damage them and some of the buildings we padlocks. And so hope nobody tries to get in these places. We hope you will take good care of our farm.

Glad to hear Mr. Bonn is working with you. We know he is a swell guy and please give him our regards.

Well when you have time, please mail me the ring case. Will appreciate it very much.

Who's driving the Ford V8. How's it run? We sure miss our car rides. We have to hike everywhere we go.

The other morning at [8 am & 4 am] fire damage was done to our store. The store is a block from us and so we saw the big flames. They were able to turn the fire off in 2 minutes and so that sure was a good job done by the firemen.

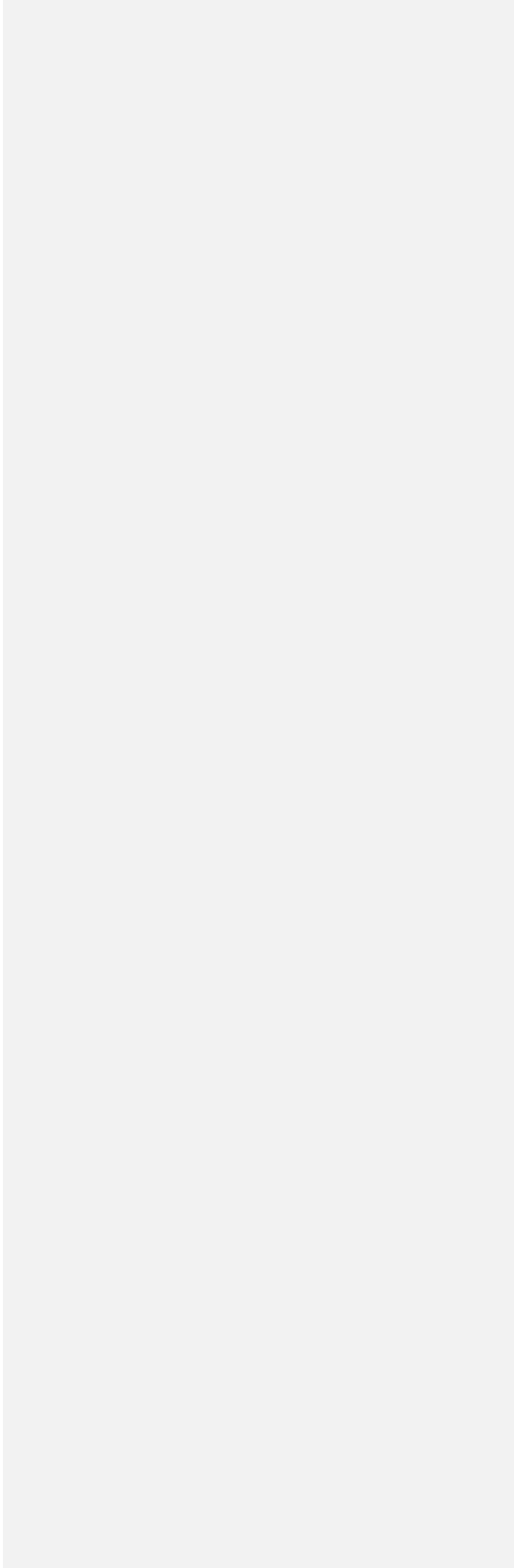
Mas Inatsu lives 3 blocks from us and the Matsuokas live near too.

Better be signing off around here. Has any tomatoes ripened as yet? How is the price?

Hoping to hear from you soon. Will be waiting.

Always,  
M. Hashiguiki

P.S. Best regards to your family. Say hello to our friends. Come down & visit us if you can. Many American friends from Tacoma are visiting here.



2021.001.022 by Tom 08/23/1942

Aug-23-1942  
T5212-E  
Tule Lake, Calif

Dear Leo,

Thank you many times for your kindness letter. I should write you sooner but you know how I am. Something another all the time. I am very glad to hear that your are staying [in] Bellevue because that way I know you can look after everything all the time for us. It's too bad about Van Valkenburgh. I never meet him before so I don't know what kind of guy he is but I think better to take him out if you can. It's too much work for you, a guy like that is your partner. About Shimogakis greenhouse maybe you have heard from them but I ask [Hakay] she said it not sold to Van. How is [ToKs] place and greenhouse [saits] stayed? If you have chance to go there let me know about it will you.

Over here we staying now [in a] big camp [where] about 16,000 people stay and 1.¾ mi x 2 mi wide so when we visit [the] other end [of] the camp we [*sure half*] walk. Most men and young girls [are] working. [Men] as carpenter, farmer, driver, cooks, girls as office and men hall [workers] . Wages [are] \$12.00, \$16.00, \$19.00. For months I am working [on a] farm as well, about 2,800 acres planted just about everything but this you started too [late] so maybe we don't haven't full crop. I'm sure everything [is] growing fast.

I get up 6.20 AM and eat, go to timekeepers, put time in, and 600 or 700 farm workers get up trucks, go to the gate, count as the army go to the field. It took us about 20 minutes to get there and come back. 500 PM on evening I am working for potatoes, mostly watering.

I hope Tom William comes over here for visits then we can hear from him about home. That what we are dry for home news.

Now Leo, don't you work too hard and wish you success for your late crops.

Moo, ToK, Jam, my brother Yobuki, Hayashide, Ito stay in same side of camp and Shimogaki, Turuwa, Tomaye, and about half of Bellevue people stay in other end of camp about 2 mils way but we see each other on baseball games and so forth.

Now I am going to [the] Bellevue and Maryville game and evening Sairchi Hayashida and Ihuyeko Yamaguchi's wedding. Best my regards for Mrs and all. I will write again.

Your friends, Tom.

(T.5612.E. (WRA) Tule Lake, Calif)

2021.001.023 by Hashiguchi 08/27/1942

5907-D  
Tule Lake WRA  
Newell, Calif  
Aug. 27, 1942

Dear Leo,

I hope you did receive my last letter. Hoping you are all in the best of health. As for us, we're making out fairly well.

Can you imagine, we are now having plenty of rain every night. Boy and is it cool out here in the evenings and early morning. We have to keep our stove going.

How is everybody and everything out in Bellevue? Hoping everything is getting along okay.

Hoping I'm not bothering you. Would you please send me the blue baby carriage and a little [*unierloved*] toddler buggy we had. I believe it is in the little house below the road next to the small greenhouse. I know it will be very hard to pack but you can fold it and ship it or something. We will pay you for the charge. It is so hard carrying around our little son that we sure need it. I think the handle for the toddler is also around there. Will you please look around then ship us those two buggies. Hope it won't be too much bother. Thank you kindly.

Love to all my good friends.

Love,

Mrs. Hashiguchi

P.S. The wood in the wood shed was not sold or anything to the company and so would like it [*undisturbed*] *untrum shed*. When we go home, I am sure we will be unable to purchase any with lack of money [*& ect.*] Therefore [*we*] would like very much to have it left.

Gosh we were so busy when leaving [*we*] couldn't have [*anything found*] or do anything right.

How's the farm crops? Hope they are coming along okay. Sure wished we were home to help you. [We] do miss farm work very much. We can just imagine ourselves, picking beans and tomatoes. What fun those days really were. My love to your family.

M.H.

P.S. Our best wishes to the Bonn's

**2021.001.003 by Henry Tsubota 09/10/1942**

Henry H. Tsubota  
6903-C Tule Lake  
Neinell, Calif

Relocation  
Tule Lake Relocation Center  
Sept. 10, 1942

Dear Leo,

Gosh, Leo I haven't heard a word from you since I left Kent. I wish to [*deoc!*] you'd break down and write me a little letter. I'm sure hungry for one.

Have you been down to see Kenny? I wish you would write & let me know how he is making out. How did the packing house make out this year, and how is the missus and the kids? I suppose most of them are going to school. After I have written what letters I have sent before and not getting any answer. I've been wondering whether you're still around Kent [for the letter home does not come back]. I suppose you have received them.

I'm still plugging away as an electrician and getting by. Everyone in the family are well and I hope everyone in your family are well. Well, Leo, I have my fingers crossed for a letter.

Your friend,  
Henry H. Tsubota

**2021.001.004 by Keo Murakami 10/07/1942**

Bellevue Vegetable Growers' Association  
Lettuce- Peas - Cauliflower - Tomato  
Bellevue, Washington

Telephone Lakeside 272

7012-C Tule Lake WRA  
Newell, California  
October 7, 1942

Mr. Leo Milden  
Kent, Washington

Dear Leo:

Goddamnit how in hell are you anyhow? I haven't heard a peep out of you since I last saw you - it makes me mad to see you act so stuck up - as if you've never heard of me before!

Seriously, Leo, how are you making out with your job - and how's everyone in your family? I hope that you're making your share of the dollars that are floating around there. I ment to write sooner to learn how the Bellevue deal turned out, but having learned from other sources, I've put off writing to you.

Mr. Oliver dropped in to see me sometime ago, and gave me a general picture of how things are out there. By the way, I had my truck stored at his place, but now he's selling it for me. It wasn't much of a truck anyhow. Mr. Sorakubo of Bellevue has agreed to sell me his truck - said that you had it stored at your place. I would appreciate your letting me know just what condition it is in, Leo, so that I can complete the deal with him. Mr. Oliver has room in his garage - where he kept my Ford truck - so I'm planning on keeping the Chev there. Mr. Sorakubo said he had some new tires on the truck, so I'm sure it'll be okay for me to store until I get back, I may take a trip over there - Jim Watanabe, Sut Nakanishi, George Ikegami and others got a permit to go to Kent, and left the day before yesterday.

Mr. Matsuoka and family (Tom), left for Montana some time ago. He's figuring on growing and shipping fresh vegetables out of Montana. Saito is also figuring on a

shipping deal out of Wyoming. Understand [that] Hanada already bought some land. Maybe you and the rest of our gang will be working in a shed again, Leo. Oh yes, practically the whole Bellevue baseball team is out in Montana - including our good friend Mas Inatsu. Toki & his wife are also there.

Would appreciate hearing from you as soon as possible. Before I write more about camp life, the fellows that are going out on their own and how they're getting along, like Dick Naito, ect. - I'd like to learn if you're still living and kicking.... Several fellows said they wrote [to] you, but you've never answered.

Best regards to you and your family, Leo - this will be about all for now...

Friend,  
Keo Murakami

**2021.001.024 by Shimogaki Family Before 10/21/1942**

Block 57-15-A  
Tule Lake Project  
Newell, Calif.

Dear Leo:

How's everything going nowadays? Same or worse than usual, huh? Down here it is the same as ever, not much doing. How did the crops come out?

Leo, in your letter to Tom Matsuoka you said Van took the small greenhouse apart and sold it. Have you any idea how much he received for it? We didn't sell any buildings to him or anybody else so I am wondering just what we can do about the matter. When we asked him if he'll buy the buildings outright he said no because he wouldn't get any benefit from them. I'm going to contact our landlord and see what may be done about Van's doings. When we were negotiating about the crops on the place we thought he was a trustworthy person but all the time I guess he had some scheme down under ready to hatch when we left.

Is Mr. Bonn still connected with the company? If he is, maybe he can do something about situations of this sort.

If you find out anything further [in] regards to this or anything else will you please let us know.

Sincerely,

Shimogaki Family

**2021.001.025 by M Hashiguchi 10/21/1942**

Oct. 21, 1942

5407-D  
Tule Lake WRA  
Newell, Calif.  
Oct. 4, 1942

Dear Leo,

How is everything out in Bellevue? I hope the farms are being run in good condition. How are the tomatoes, beans and corn coming along? Suppose its the peak of those crops and it is about over. How we miss those delicious vegetables.

After hearing from you once in Pinedale, we haven't heard from you. I do believe you are very busy trying to run the gardens and have all the vegetables picked. Hoping you [haven't] got too bad of a headache. Wish we were home to help you. Please let me know how everything is coming along.

As I hear, your family will be all moving back to Kent. If that happens to be so, will you please give Mrs.D.P. Baunsgard the permission to move our piano. Thank you so much.

Another thing, you have promised to mail me the ring & pins which were in a pink & gold case. I have been waiting for every mail but no sign of it as yet, so I will be more than glad to pay for the postage and so will you mail it to me immediately. I will be waiting. We had our Sugar Ration Books on top of our piano and so if you should have seen that too, will you please mail it. I hope you will give your immediate attention in mailing them to me.

As I hear the Shimogaki's greenhouse was torn down and sold but returned later. And I heard irrigation pipes at Stryker's farms were going to be sold but stopped. Some awful troubles can happen sometimes. Hoping everything else is going smoothly.

We are very busy here, with many young boys going out to the sugar beet fields. Mas & Toshi Inatsu are in Montana [for] sugar beets. Tom Matsuoka & family, Takio Hirotaka are also out in Montana. Takio's wife is expecting soon and so they will move next spring. We are also planning to go out next spring if everything looks okay.

Hope you will mail me the package soon and also to hear from you. We will be waiting.

Thanks for everything. Please tell all our friends "hello".

May God bless you. Muts sure misses those drinks he had at Genis Place with you.

Always,

M. Hashiguchi.

**2021.001.026 by Haruki Shimogaki 10/27/1942**

c/o P. G. Kinney  
Townsend, Montana  
October 27, 1942

Dear Leo:

Received your letter some time ago from my folks in Tule Lake, but only now finding time to write. I came with a group of eight to help in the harvest of sugar beets. We arrived here on the nineteenth of September and [have] worked about a month so far. Beet topping is sure hard work compared to what we have been doing, especially after a long layoff.

How is everything around the Puget Sound region as far as farming is concerned? What are you doing at present? How is the weather nowadays? Bet it isn't half as bad as here. Now as I am writing to you, it is raining very hard. For the past four days, we really had some weather. The temperature got as low as five above. We certainly have hit the extremity as far as weather is concerned. We were in one hundred and twenty degrees in Pinedale, California and now here. I don't believe it can get much worse. During these four days we were trying to top and believe it or not, as we whacked the knife down on the beet, the knife actually bounced back. The beets were frozen throughout.

About the hot-house of ours which [was] taken apart. I wrote our landlord and she said she contacted Van Valkenburgh about it, and she informed me that Van told her he took it apart because it was in a collapsible condition. She said he is just spinning the "yarn" as she sees it, and I think so too. She mentioned a lawyer for the Japanese owners, so I am asking you if you know. She thought his name was Mr. Olson. If you do know, will you please give me his address [at] your earliest convenience.

Probably know by now, but if you don't Mr. Matsuoka has brought his family out of camp to the sugar beet field. His address is c/o G. Blatter, Chinook, Montana.

Please give our best regards to all.

Hoping to hear from you at your earliest convenience.

Sincerely yours,

Haruki Shimogak

**2021.001.005 by Mits and Muts 10/29/1942**

5907-D Tule Lake WRA

Newell, California

Oct. 29, 1942

Dear Leo Milden,

Many thanks to you for the letter which I received from you a few days ago. Sure was glad to hear from you. As I hear you have resigned from the Western Farms Inc. I also heard that Mr. Bonn had resigned and had moved from the Suguro's house to some other place. What has happened to the company, we thought it would be a swell organization and would look after our place until we did return but things don't look so good, does it? As you said in your letter that the company may not run the farms next year, what do you think that we should do if they don't? We would like to send somebody from this camp to straighten things out but we don't know if we can as yet.

As I hear that they don't even know who is head of the company or anything and some people haven't even received their rent as yet. They keep neglecting and saying that the boss isn't around to sign the checks and so can't pay them as yet. As it says on our contract we signed that we will get paid for our rent as soon as the crops are over, we do believe that the crops are over now and are hoping to get paid for our rent. We never dreamed that this company would be so slow and neglecting in paying us for rent and then they go in robbing so many people's stored things and what not. When the people heard all these things, they blamed Mutsuo for most everything and he is sure stuck too, he didn't think things would be so bad and so just did it for the sake of the friends of Bellevue. I wish you would tell us in detail what is becoming of the company and should we expect our rent before long. I know you have left the company and I hope you can give us all the [hope]. As I hear somebody had gotten into our boarded window house and took the things out of there and what not, do you think we would be paid for those things. We can sue them if we have to. Mrs. D. P. Baunsgard of Bellevue is our power of attorney [in] our place and she can do anything she wants to. We live so far [away] that we don't know what is happening and what has disappeared but we hope she will take care of it. What did you do with our piano? Please give it to Mrs.

Baunsgard because she will have it stored at her friend's place for us. Please let me know that you have released it to Mrs. Baunsgard.

We are very worried about what is happening to our things back home and how the farms are getting along and so if you should have time please let us know. We have to let our Bellevue people know what they ask us and so hoping you will let us know.

Have you found a new job after quitting there. There is a lot of defense jobs that you can get and pay much better, can't you. Mas and Toshi are working out in Corvallis Montana working out in the sugar beet fields. They will be back about the 16th of November. Matsuoka family has moved out to Montana. They say that everything is fine out there.

Hoping that I may hear from you and please let us know how things are doing and if we can get back what they did take away. I hope I didn't bother you with my awful letter.

Best regards from the Takeshita family and all your friends out here. Hoping to hear from you soon and may I hear from you soon.

Best regards to your family. Please tell our friends back in Bellevue our love. Is Van still working for the Co?

Love, Mits and Muts

**2021.001.015 by George Matsuno 11/22/1942**

Nov. 22 1942

Dear Leo,

How are you Leo? I sure hope you're strong and healthy to the last time I saw you. I know they can't let a tough man like you down.

Well, Leo, I'm in the army now and not behind the apron. A man like me shouldn't be in the army. I should be on the national defense job raising kids.

[They're] out to make me or break me and at the present I got them baffled. Knowing that you're an ex soldier and you could teach me a million things about the army life, I won't say anything about it. However, that 4 days hike I had last week just about ended my army life. [There's a] bunch of Arkansas boys in my company and I sure am going to get that southern talk before long, sure enough. Most of them are farmers and do hope they're pretty nice.

They had out 24 hrs pass at their camps and before long I'm going get me one of these [*plackes & credin*] Southern gals and just melt in her arms.

By the way I just heard from somebody that Tsubotas had moved. I didn't know his new address so if you happen to see Hiro, please give his family my best regards.

Well, Leo, I think I'll cut this [*jive*] you this time. So until the next time, I bid you adios.

Sincerely yours,  
George Matsuno

P.S. My regards to your wife and Jenny.

**2021.001.027 by Torao Sorakube 11/30/1942**

Tule Lake, Calif.

Nov. 30, 1942

Dear Leo,

Thanks for your letter. Your letter telling the whereabouts of my property is very much appreciated. Glad to hear you are working and was surprised to hear that you concluded your job with the Western Farms Inc. Hope the rest of the family is well as we all are here.

You say that my pickup is still in your possession. Why didn't you sell it as I asked you to? How about you buying it from me? It doesn't do me any good to hang on to it. If you don't want it I can have it sold to a person here in camp who wants it as he is expecting to leave camp as soon as his permit comes.

I am going to write Van and ask him about the pipe and see what he is doing with it and if he is using it, I'm going to collect rent.

This is about all for this time. Write me a reply on what you can do about the pickup. Thanks a lot for the last letter and let me hear from you again.

Torao Sorakube

**2021.001.028 by Matsuoka Family 12/12/1942**

May your Christmas be full of cheer- your New Year happy!

James, Amy, Janice Matsuoka

Dec.12, 1942

**2021.001.006 by Torao Sorakubo 02/23/1943**

Feb. 23, 1943  
Tule Lake, Cal.

Dear Leo,

Received your letter and enclosed money orders. Thanks ever so much for your help. Also read Mr. Chamberlain's letter asking for the power of attorney and title card. Have sent him the green registration slip. I gathered from his letter that he did not receive the requested papers which I had sent you some days ago.

This is an inquiry to ask if you had received these papers and had forwarded them to Mr. Chamberlain. Please answer this inquiry as soon as possible.

We here are all well and hope you are the same. All you have done for us I can't say too much. We are very grateful. Thanks again.

Sincerely yours,  
Torao Sorakubo

**2021.001.007 by Keo Murakami 02/28/1943**

7012-C, Tule Lake WRA

Newell, Calif.

Feb. 28 , 1943

Mr. Leo Milden  
Kent, Washington

Dear Leo:

Some time last year, I wrote you in regards to Sorakubo's pickup, advising you that I was interested in buying it, and that I'd like to know what condition it was in. I didn't receive the letter, if you did write - but I did receive a Xmas card, which I appreciated very much.

Mr. Sorakubo just advised that you had sold the truck and had mailed him the money. I sent a fellow over to your place to look over the truck and set a price on it, so that I could pay Sorakubo the fair market price. The fellow's name is Chamberlain - he bought my car last May. I didn't want him to buy the pickup; but couldn't have him run over to see it, and let him know it wasn't for sale. So I told him about the truck, and had him go look at it, just to set a price and tell me the condition it was in, so that I could get an idea of how much to pay Sorakubo. I needed it for Idaho, as I'm leaving for there in a short time. If the truck was sold to someone in Kent, will you please advise if I can buy it? I have three brothers in the Army now - the third, Mits, just having volunteered the other day. My dad is still interned in New Mexico. We're sure in a crazy position, what do you think? My first brother is now a Corporal and expects his Staff Sergeant ranking sometime this month. We hope that the Americans will understand us better after this war is over - that it wasn't our fault we have Jap faces, and that they could have been born Black or Brown instead of White - as we could have no choice at birth. I hope that this war will be won with an "unconditional surrender" this year!

Friend,

Keo Murakami

Tom Matsuoka is in this camp now, recruiting workers for the U&I Sugar Company. Looks like the whole Bellevue bunch will be going to Montana with him.

**2021.001.029 by Chuck Furuta 03/13/1943**

4902-B  
Tule Lake W.R.A  
Newell, California  
March 12, 1943

Dear Leo,

Well how's everything with you these days Leo? Everyone is in the best of health, I hope. As for us, we are all okay and getting along as well as possible under the circumstances.

Gosh, I'm sorry that I didn't write to you long ago. I thought that I'd have lots of time to write letters in camp but it seems as though that hasn't been the case. Of course, my laziness has a lot to do with it too.

Down at Pinedale, I was working as the mess supervision's assistant and I was kept busy though! There sure is a lot of work to keep feeding 5000 people! In spite of it all I learned a lot and had lots of fun working there. Boy! It really was hot down at Pinedale! In our office, we had a couple of big fans and yet it went up as high as 125\*! Honestly it was so hot that no one could do any work.

One good thing about Pinedale was that I was able to go into Fresno quite a few times. The mess department had a truck going into town every day to get food supplies from the storage houses so I would just "hop on" and go.

Since coming here to Tule Lake I've been working on the agricultural technical staff. As you may already know, we have on this Project a 2500 acre farm. The land is quite level on the farm and the soil is very rich. Last year they raised almost everything possible. They had spud, barley, lettuce, pear, cauliflower, nappa, daikon, cabbage, Chinese cabbage, rutabagas, parsnips, turnips, carrots, beans, broccoli, celery, radishes, beets, onions, and there were a few other crops too. We also have on the Project a hog farm consisting of around 1000 hogs and also a poultry farm. I guess they want this place to become as self-sustaining as possible. You should have seen the lettuce they grew on the farm last year. They didn't use any fertilizer or manure on the crops and yet they were the best lettuce I've ever seen. It's surprising how well

everything grows here. I wouldn't mind farming on such a rich soil as this. They have to irrigate the crops just like they do in Yakima.

By the way, what are you doing these days Leo? Are you still working for the same outfit as you did last year? How was everything on the farm last year? The prices were pretty fair, [weren't] they?

Does it look as though there will be much farming done in the Valley this year? Mr. Oliver wrote me and said there was very little activity on the farms as yet. It's too bad we can't go back there to farm again.

Did you know that I became a father last August? [I] got a baby girl and I was hoping that I would get a boy. [Since we can't] have everything though can we? [Jime their didn't --- ?] She is already over 6 months old. Before I know it, I'll become an old man.

Say, Leo, I want to let you know that I gave your name as a reference for my leave clearance so I hope you won't mind. One of these days they will probably ask you about our characters, ect. So I hope you will take care of it for us. Thanks a lot.

Do you ever go by our place on your way to work? How does the place look to you? I never hear anything about the place so I'm sure curious about it. I guess the boys didn't do so good last year. I wonder what they are planning to put in this year.

You've no doubt heard about James Matsuoka going out to Montana to resettle haven't you? I don't know how he's making out since I do not hear from him at all. Tom Matsuoka has also taken his family out there. Next week, Hiratoka's, Ito, Matouzawa, and a few other Bellevue families are leaving for work in Montana.

Last year I went to work in the sugar beet harvest near [-- gm]. It sure felt good to be out [for a] short while. Financially I was a big [farmer] out [ther] I had a lot of fun.

We are thinking of relocating out in that district this year if we can [find] something suitable out there. What do you think about it? Probably the only thing we could possibly do this year is to just work around. You're pretty familiar with that country aren't you? What part of that district do you think is that best for farming? Do you think it is better near Coldwell than near Vale or Ontario? I don't know the place any too well so I thought I'd ask you about it first.

You don't know of any good 15 ton trucks around for sale in the Valley do you, Leo? I'm looking around for a truck since I plan to go out to relocate. If you know [I would] sure like to know about it. [It] sure [was a] dumb thing when I sold our truck. [It would] really be swell if I could [find a] truck [that] model or newer. I'm [trying] to get a truck if I possibly [can certainly] appreciate it if you could be [tes]. I'd be glad to compensate you if [you find] one for me.

Well, I ment close [now]. Write to me when you have [time] Leo. I'll be waiting to hear if [you can]. Please remember me to [you] and family. Dal, mother, and Mary send their regards to you.

Sincerely yours,  
Chuck Furuta

**2021.001.030 by James Matsuoka 05/04/1943**

Route 1, Nest  
Great Falls, Montana  
May 4, 1943

Dear Leo,

Sorry I couldn't find time to write to you any sooner than this. We have been very busy here on our new 210 acre ranch. I hope that this letter finds you and your family in the best of health. What are you doing at the present time? What has become of the deal at Bellevue?

Leo, in your spare time will you go over to see our packing house and tell me the condition of the equipment and machinery there. Are the wax papers and paper pads still there? If not, will you investigate and see what has become of them?

Will you also go over to Washington Frosted Food and feel out how Mr. Cabill and Mr. Walten are feeling about prospects for post-war dealings with us, the Kent Vegetable Growers Association.

Ed Natori and I have gone into a deal to grow sugar beets (125 acres) and 25 acres of potatoes, and 50 acres of alfalfa here about six miles north west of Great Falls and the Sun River. Fortunately we made a good deal. We don't expect to make a fortune but a better living than in camp. We were going to grow about a 50 acre truck garden but the union pressure against Japanese prevented us from growing any this year. However, next year I will be growing some vegetables here.

I would be glad to hear from you as soon as possible. Thanking you for everything I remain

Sincerely yours,

James M Matsuoka

Hello to your family.

**2021.001.031 by Chuck Furuta 05/26/1943**

P.O. Box 133  
Vale, Oregon  
May 26, 1943

Dear Leo,

How's the defense workers getting along these days? Hope this letter finds you and the family in the best of health. As for me, I'm still out here by myself working away. My family is still in camp and I don't know when I'll call them out here, if ever.

For the past few months I've been doing every kind of hard work in my life but I think sugar beet thinning beats them all! Gee, it sure is tough on your back and it seems to make a physical wreck out of a person after a little while of it.

I suppose the lettuce deal will be coming off in the Valley pretty soon won't it? Do you think there'll be much of a deal this year but there? Some of the lettuce out here is looking very good. Many of the fields have lettuce dealing already. I think they will be shipping lettuce out of here from about the tenth or earliest of next month. I was sure surprised to see how fast the lettuce grows out this way. It seems to "stretch out" overnight or something. [Seems] to me as though there might be quite a bit of lettuce shipped out of here this year. I guess Jack Horgue is planning to ship some lettuce this year because he has old men Horis working for him out here as a buyer to purchase from the Japanese growers out in this area. Horgue's reputation out here is pretty bad though, isn't it? A lot of the farmers don't want to have anything to do with Hogue so it must be pretty bad.

How's everything looking out in the Valley this time of year. I imagine there is a lot of unplanted acreages out there this year isn't there? It really is a shame to have good fields go to waste isn't it?

By the way, Leo, have you seen how our farm is doing this year. I sure would like to know what the Filipino boys are growing on it this year. I never hear from them so I don't even know whether or not they're still on the place or not. If you chance to go by there, will you look at the place and see how they are doing? I'd sure like to be back there again to be able to farm as in days before.

With the gas rationing and all, it must be pretty hard for most people to do any leisure travelling these days isn't it? It's easy to notice the difference out here too.

My brother-in-law Toh and his wife and kids are out in [Weston] now. They're working on a large hog and cattle ranch. You know Leo, this place is beginning to look like the old White River Valley before we had to evacuate. Frank Okimoto and his whole family is also out here. They are farming a little this year on their own.

If I can get a good set-up out here I may go back into the farming game but it has to be a good deal or I don't think I want to take the chance. The farmers out here seem to have had pretty tough luck until just a few years ago. Maybe during wartime, it may be all right though.

I guess you've heard that Hoida has gone into farming in a big way this year. He and his gang are farming about 300 acres all over this valley. Kawasaki is also farming close to 300 acres also. They should do all right just as long as they can get their workers.

They're importing all kinds of labor in this section this year. Filipinos, Mexicans, Jamaicans, negroes, and every other nationality you can think of. It'll be a regular melting pot here of all races pretty soon.

Well, I must close for this time. Hope you'll write when you have the time, Leo. Please give my regards to your wife and children.

Sincerely yours,  
Chuck Furuta

**2021.001.008 by Chuck Furuta 12/20/1943**

2-1-E

Heart Mountain, Wyo.

December 20, 1943

Dear Leo,

Thanks a lot for your card and your most interesting letter. It sure is nice to hear from old friends back in the "old home town".

I had been meaning to write long ago but due to my laziness, I have neglected to do so until now.

As you know, I left the Tule Lake Camp for Vale, Oregon on March 23, and I stayed out there until September 10. I got word that the folks were going to be transferred to Heart Mt. so I rushed back to camp to help them with the packing. We left Tule Lake on Sept. 18 and arrived here at Ht. Mt. on the 21st. Our train took us as far north as East Auburn and then across the state through Yakima, Walla Walla, Spokane, Missoula, Billings, and finally here. It was a swell feeling to see the country around Auburn once again. We stopped in Sumner in front of Puget Rd. Veg. growers shed for about half an hour. Yes, it really felt like old times when we used to haul our celery over to Sumner.

I was glad to hear that you are doing so well with your work at Boeing and also with your farm. I always did think that you could make a "go" of it on a farm with your experience along that line. I'll bet you could have done all right for yourself by just farming. I imagine that if a person raised halfway decent crops out there he could make a little money couldn't he? By the way, how did most of the farmers out in that valley make out this year? How's "Red", Leber's, Smith Bros, and the other "big" farmers doing out there these days. Did they make any money out this year? I know all kinds of rumors about the farms out there but nothing for sure. I'd sure like to know what the real "low down" on the farm situation is out in that valley. I'll bet a lot of farms are being left untouched now, aren't they? When you come right down to it farming is a pretty tough game don't you think?

Do you ever hear from the old "packing house" Gang these days? Everyone is really spread out now aren't they? Hiro Tsubota is in [*Minidoka*], James Matsuoka is in

Great Falls, Frank Okimoto is at Vale, Frank Nakanishi is at Ontario, and I'm here in Wyoming. I heard from Hames recently and he says he did a little share-crop farming this year but didn't do so well. Sutt worked on Jim Wantabe's farm out in Fruitland. Did you know of Tom Harris [*Horris*] farm out in Fruitland? Well, Jim Watanabe and another fellow look it over and separated it this year. According to what I hear, they didn't do very well on it. Frank Okimoto did a little farming on his own at Vale but I don't know how he made out for I never have heard from him since I left Vale.

Since coming here to Heart Mt. I got a job in the Fire Department. We work 24 hours on one shift and then we are off for 48 hours. During my spare time, I am taking an [*extension*] course in Refrigeration & Air Conditioning so I seem to have plenty to do all the time.

On the 8th of last month, we had a fire in our apartment. It started from our neighbor's apartment and burned over to our side. It was checked in time to prevent any damage to our belongings so I guess we were pretty lucky. The only casualty of the fire was my dad. He dropped something heavy on his foot during the fire and got an internal hemorrhage in the right foot. He had to get it operated on to resume the blood. He was laid up for over a month but he is okay now and is working as a carpenter on the maintenance crew.

The weather during the past couple of weeks has become colder and it has [*got*] gone below zero on a couple of occasions. It snows every now and then but not enough to pile up. Has the rainy season started out there yet? I understand they had a flood out there recently.

This place is located about 20 miles from where Saito & Hanada are living in Worland. I understand they have purchased about 80 acres of land and they farmed it this year. They raised mostly shell beans with about 10 acres of onions also. The land around here in Wyoming seems to be quite poor as compared with that of Oregon or Idaho. Montana doesn't seem to be very good either.

I met Ray Saito and Ben Hanada when they came in here with the Worland Hi baseball team this fall. Ray Saito is really a smooth ballplayer. He made the Bighorn Basin all-star football team for two years straight. I guess he'll be in again in January to play basketball.

Well, Leo, I guess I've rambled on enough for this time. I'd appreciate hearing from you when you can spare the time to write.

The father, Mary, and Jurie all send their best regards to you and your family.

Most sincerely,

Chuck Furuta

**2021.001.009 by Frank Takehita 03/10/1943**

March 10, 1945

Parma Ida.

Dear Leo & family,

You might be a bit surprised to hear from us. Just dropping you folks a few lines. We're doing alright, only wishing we were back in that valley again now. There is no place like home. Well, how are you folks back in Kent? Hope you're doing fine.

We are now relocated to Para Idaho try farming again. Some onions, lettuce, sugar beet, on a sharecrop *base*. There sure are a lot of [*evacuee*] people around here, starting on farming and other businesses. People around here are sure nice to us Japanese. Welcoming us to stores, bars, restaurants, hotels, & etc. Especially the landowners that rent up from \$20.00 to \$60.00 an acre for rent. In share crop bases they will make from 150 to \$250.00 an acre if everything sells, and it usually brings pretty good prices.

I hear the farmers back [on the]coast sure are making plenty too on garden crops. That is when they have enough help. Some day maybe I will be back there too, but I hear it pretty bad for us now. Heard from a few of the boys that went visiting back [to the] coast. The other day I met Charles Tochu & Horida. They told me of meeting you in Kent. These boys say it best not for us to go back now. So we're going to stay here for a while.

Heard from Charlie that you got some money for me? You must of sold those Spend rollers for me - Some to her around \$45.00 that time, I wish you would send it to me I sure can use it. Someday I may be able to do something for you. Best regards to everybody. Hope this letter finds you all in the best of health & happiness.

Yours [*souces*],

Frank Takehita

R#1 Parma Ida.

**2021.001.011 by War Relocation Authority 08/11/1943**

War Relocation Authority  
309 Walker Building  
Seattle I, Washington

In reply, please refer to:

August 11, 1945

Mr. Leo Milden  
532 South Rr. Avenue  
Kent, Washington

RE: Matsushita, Tadashi

Dear Mr. Milden:

In regards to the above-captioned client, we find a letter in our files dated October 13, 1943, in which it is stated that you were appointed Power of Attorney for the above client. We have been trying to produce a copy of the lease between the former owner, Mrs. Hattie Turner Smith, and the above client and thought that perhaps in as much as you had been an attorney in fact, that you may have a copy of this lease. If so, would you please send it to us by return mail. Using the self-addressed, franked envelope. If you do not have this lease or a copy of it, you may be able to know of someone that has. It is very essential that we get this lease

Sincerely,  
Claude G. Walker  
Sr. Property Supervisor  
By: Frank H. Umbarger  
Property Officer

In March 1946, Executive Order 9066 was repealed and all Japanese-American concentration camps closed.

**2021.001.012 by K Hanada 01/08/1947**

Vale, Oregon. January 8, 1947.

Mr. Leo Milden  
Kent, Washington

Hi, Leo:

What [are] you doing? Still, working with Santa Cruz?

What [are the] beans doing this year, I hear lots of peas (frozen) carried over.

Quite a few people going back to Coast now, Takeda of O'Brien might go back if they can find a suitable place, so are Jonny Okimoto and Komotos. Joe Nishimoto went back to Thomas.

We might go back to Seattle instead of Valley. I think I rather let Smith and Lebers have the Valley so they can enjoy catching the steelheads in their bedrooms. I hope Smith's cow had plenty of water to drink, he may get more milk.

If you have time to spare let me hear what going over there.

Thanking you for your kindness with best regards to Mrs. Milden and your brother Dick.

Yours old friend,  
K Hanada

**2021.001.013 by Min Tsubota 07/20/1950**

Min Tsubota  
Telephone Seneca 7474

Complete Insurance

615-29 Joseph Vance Bldg.  
Seattle 1, Washington

July 20, 1950

Mr. Leo Milden  
532- South Railroad Ave.  
Kent, Washington

Dear Leo:

This morning I received the signed letters from you and I want you to know both Hiro and I appreciate very much what you have done for us. I can't help but feel that your letter will carry a lot of weight with those people back at the Justice Department.

Hiro left for Payette last night at 6 o'clock, and he was very happy that he accomplished so much in regard to his claim, and so now all we can do is sit tight and hope for the best.

Please thank Mrs. Milden for the dinner that we stopped in on so unexpectedly and kindest regards to the family. Should you find time, my wife and I would like to have you drop in and visit with us.

Thank you once again, Leo.

Very truly yours,

Min Tsubota

**2021.001.014 by Barbara (Milden) Cain 09/01/2005**

To the Kent Historical Museum

To all of you who lived through this heart-wrenching period of time and the injustice imposed on a group of our citizens, I leave these letters.

My father was Leo Milden, a long-time Kent resident who was a field representative for Stokely Van Camp. He knew most of the Japanese farmers and did business with them, many of whom were his good friends. Leo was hired by the government to harvest the crops on the farms around the Bellevue area. When he tried to get answers for some of the questions posed to him in these letters from his friend she was stopped by higher officials and was told his job was only to get the crops harvested and that they, the higher officials, were responsible for interfacing with the Japanese farmers that were sent to internment camps.

These letters to my father and the ones I donated previously reveal the respect, friendship, and love my dad and his family had for these Japanese farmers.

In Christian love,

Mrs. Barbara (Milden) Cain

Dated this day September 1, 2005

**2021.001.010**

Farrington Court

It's more than retirement. It's five-star fun.

Letter

Some from internment camps.

## **Index**

### **Baunsgard, Hurley**

*A non-Japanese woman from Bellevue, had Power of Attorney for the **Hashiguchis** while they were imprisoned. Referred to with her husband's name as Mrs. Daniel P Baunsgard.*

2021.001.005

2021.001.025

### **Bonn**

*Another non-Japanese employee of the Western Farms Incorporated (aka "the company").*

2021.001.005

2021.001.021

2021.001.023

2021.001.024

### **Brandt, George**

*Non-Japanese bank clerk who helped **Ed Natori** with arrangements as he was forced from his home.*

2021.001.016

### **Cabill**

*Non-Japanese employee of Washington Frosted Food.*

2021.001.030

### **Chamberlain**

*Non-Japanese who worked as power of attorney for **Torao Soarkubo** and bought a car from **Keo Murakami**. Helped with various business arrangements for incarcerated Japanese neighbors.*

2021.001.006

2021.001.007

### **Doc**

*Non-Japanese friend of **Torao Sorakubo**.*

2021.001.018

### **Furuta, Chuck**

Born in Kent in 1919, **Masuki Charles (Chuck) Furuta** worked as a truck farmer in the valley. He was sent to Tule Lake Relocation Center through Pinedale assembly center then, in 1945 transferred to Heart Mountain Wyoming. Chuck returned to the Kent area and passed in 1994.

2021.001.008\*

2021.001.029\*

2021.001.031\*

**Furuta, Mary**

Born in 1920

2021.001.008

2021.001.029

**Furuta, Kishachi**

Born in 1884 Kishachi was Chuck Furuta's father.

2021.001.008

**Hanada, Ben**

Born in 1926, Ben was never incarcerated but moved with his father to Wyoming. He enlisted in the army in 1943 at the age of 17. Known as a good baseball player he moved to Ontario OR before going back to the Seattle area.

2021.001.004

2021.001.008

### Seniors

The class of '37 entered wholeheartedly into the social life of Kent High, and as sophomores contributed to this phase of student life by giving a Valentine dance complimenting the upper classmen. The Junior Prom, given by the class in their second year, took place amid a scene of glittering winter splendor. Snowballs and picturesque snow-covered buildings, with the orchestra in a huge sleigh, were appropriate to the date, December 13. As contrast, the Senior Ball took place in the romantic South Seas, under waving palms and starry skies. In addition to encouraging social activities for the three classes, the Seniors brought their high school career to a grand climax by giving the traditional Senior banquet, the final get-together of the class of '37.

*Seniors*

<b>DOROTHY FOX</b> Student Body Secretary 4; Home Room President 3; Home Room Secretary 3; Class Secretary 2; W. C. Conference 4.	<b>LILA MAE FRANKS</b> Secretary 2; Year Book 3; Librarian 3; Junior Prom 3; Girls' Athletics 2.	<b>CORA FRAZEE</b> Entered from Starfield High 3.	<b>ESTHER FRAZEE</b> Entered from Starfield High 3.
<b>CHARLES FURUTA</b> Vigilante 3, 4; Vice-President 4; Bank Security 3, 4; Fire Guard 3; Band Club Board of Control 3; Band Captain 2, 3, 4.	<b>LARRY HAGG</b> Football 2, 3, 4; Track 3, 4; H.V. 2, 3, 4; K. Club 3, 4; Senior Ball 4; Basketball Manager 3, 4; Band 1, 2.	<b>WARRY HAMADA</b> Vigilante 4; Stage Crew 3, 4; Senior Ball 4; F.A. 3, 4; Junior Prom 3; F. A. 3, 4; Judging Team 3, 4.	<b>MARIE HOLLOWAY</b> Perfect attendance for 12 years.
<b>RUSSEL HOUASBAY</b> Football 2, 3, 4; Basketball 2, 3, 4; Club 4; Junior Prom 3; H.V. 4; Amateur Track Manager 2; Field Guard 2; Tennis 4.	<b>GAIL HUNTER</b> Valedictorian 4; Song Leader 4.	<b>GEORGE IKUTA</b> Football 3, 4; F. A. 3, 4; X Club 4; Senior Ball 4; Junior Prom 3.	<b>SHIGEOYOSHI ISEKI</b> Junior Prom 3.
<b>MARGARET ISHIKAWA</b> Juniata Society 3, 4; K. Club 3, 4; Girls' Association Athletic Representative 4; Reporter 4; Key Staff; Girls' Athletics 2, 3, 4.	<b>JOE KATAGIRI</b> Vigilante 3, 4; Track 2, 3, 4; Field Guard 3, 4; K. Club 4; All School P.P. 2; Junior Prom 3; Senior Ball 4; Stage Force 3, 4.	<b>MERYL KISSEL</b> Football 2, 3, 4; Track 1, 2, 3, 4; K. Club 2; Junior Prom 3; Senior Prom 2; Student Council 2.	<b>WALTER KONRAD</b> Basketball 2, 3, 4; H.V. 4; F. A. 3, 4; Secretary 3, 4; Judging Team 3, 4; Chorus 4; Golf 2; Senior Ball 4.
<b>BILL LARDNER</b> Vice Staff Manager; Conductor 4; Music Meet 2, 3, 4; Valedictorian 2; 4; Stage Manager 4.	<b>BIGENIA LAZZARINI</b> Senior Ball 4.	<b>ALBERT LEBER</b> Vice Staff Manager 2; Valedictorian 2; All School 3; F. A. 3, 4; Orchestra 3, 4; Chorus 2; Pictorial Board 2; Football 3; Track 2.	<b>CHARLES LEBER</b> Basketball 2, 3, 4; H.V. 4; Reporter 4; Valedictorian 4; Senior Ball 4; Chorus 4; Orchestra 4.

Classes



Back Row: Walt Lindman, Joe Curtoni, Jack Hogan, Lowell Maynard, Gene Bridge, Jack Morse, Mr. Lewis.  
 Middle Row: **Ben Hanada**, Bill Evans, Allan Jackson, Brooks Loop, Bill Kagayama, George Keene, Bill Kobayashi, Bob Lawson.  
 Front Row: Leon Aukshun, Gordon Birkliid, Jim Mergens, Otto Johnson, Fred Marty, Kenneth Cahail, Bob Gouff.

**Hanada, Karematsu**

*Born in 1885, Karematsu was a businessman and father of Ben Hanada.*

2021.001.004

2021.001.008

2021.001.012\*

**Harris [Horris], Tom**

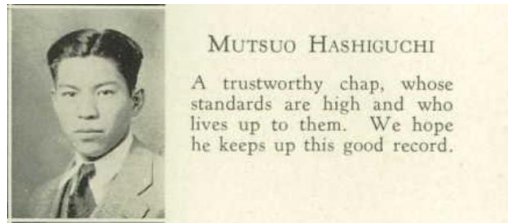
*Farmer in Fruitland Idaho.*

*See also Horis*

2021.001.008

**Hashiguchi, Muts (Mutsuo)**

*Born in 1913 Muts attended Broadway High School in Seattle. After school, he became a truck farmer near Bellevue. He was imprisoned at Tule Lake after going through Pinedale, eventually making his way to Idaho with his wife Mits. The couple returned to the area and he died in 1965 in Bellevue.*



2021.001.005\*

2021.001.021

2021.001.023

2021.001.025



**Hashiguchi, Mits (Misuko)**

*Misuko Hashiguchi nee Takeshita was born in 1921 She was imprisoned at Tule Lake camp after the Pinedale assembly center where she worked as a typist. In 1945 she moved to Minidoka Idaho. After the war, she returned to the area and she died in Bellevue in 2016.*

2021.001.005\*

2021.001.021

2021.001.023\*

2021.001.025\*

**Hashiguchi, Lester Ichiro**

*Baby born in 1940 to Mits and Muts Hashiguchi. With his parents was incarcerated at Pinedale, Tule Lake, and later Minidoka.*

2021.001.023

**Hayashida, Seichi**

*Born in 1919, Seichi worked as a truck farmer near Bellevue. He was incarcerated at Pinedale before moving to Tule Lake then in 1945 to Minidoka ID. Married Chiyeko Yamaguchi. Died in Tampa Idaho in 2013. Interviewed by Densho:*

<https://ddr.densho.org/interviews/ddr-densho-1000-14-1/>

2021.001.002

2021.001.022

**Hayashida, Chiyeko (Yamaguchi)**

*Born in 1923, Chiyeko worked as a vegetable farmer near Bellevue. She was incarcerated at Pinedale before moving to Tule Lake then in 1945 to Minidoka ID. Married Seichi Hayashida. She died in 1994 in Idaho.*

2021.001.002

2021.001.022

**Hirota Family [Tokio]**

*Sumiye, Chiyono, Kikuye, Mitsuye from near Bellevue.*

2021.001.002

2021.001.025

2021.001.029

**Hoida**

2021.001.031

**Horgue, Jack**

*Non-Japanese farm manager near Vale OR.*

2021.001.031

**Horis**

*Non-Japanese farm manager near Vale, OR working for Horgue. Possibly Tom Harris[Horris]*

2021.001.031

Commented [1]: No Idea

**Ikegami, George**

Born in 1910, and graduated from Kent High School in 1928. Worked as a warehouse clerk before he was incarcerated at Pinedale and Tule Lake.

2021.001.001

2021.001.004

**Inatsu, Masani (Mas)**

Born in 1915, graduated from Kent High School in 1933, and worked as a truck farmer. He was incarcerated at Pinedale, then Tule Lake. Married to Toshi Inatsu. May

have served under the name Masami who died in Italy in 1945.

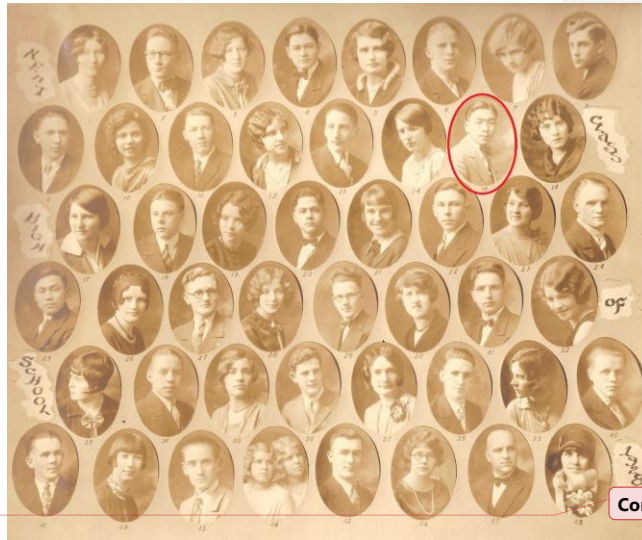
2021.001.002\*

2021.001.004

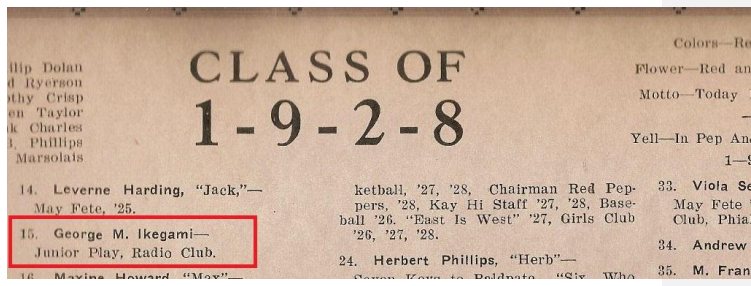
2021.001.005

2021.001.021

2021.001.025



Commented [2]: ?????



**Inatsu, Toshiko (Tosh)**

Born in 1918, Tosh worked as a maid at Pinedale and later Tule Lake. Married to Mas Inatsu.

2021.001.002\*

2021.001.005

2021.001.025

**Ito Family**

*Mitsuyuk, Nami, Mary, Dolly, Takeo, Tsutomu*

2021.001.022

2021.001.029

**Kawasaki, George**

*Born 1913, George worked as a wholesale manager in Tacoma. He was incarcerated at Puyallup then Minidoka.*

2021.001.031

**Komoto Family**

2021.001.015

**Leber Family**

*Non-Japanese family who ran one of the large dairies in the valley.*

2021.001.015

**Matsuno, George**

*Born in 1915, his hometown is listed as Seattle WA. Served in the 3rd Battalion and 3rd Company. Died in 2006 in Seattle.*

2021.001.015\*

**Matsuoka, Amy Emiko**

*Born in 1914, and worked as a vegetable farmer near Kent and Auburn. Incarcerated in Pinedale and Tule Lake. In 1942, moved with her husband, James Matsuoka, from Tule Lake to Helena Montana.*

2021.001.028

**Matsuoka, Janice Masako**

*Born in 193, she was only 5 when incarcerated in Pinedale and Tule Lake. In 1942, she moved with her parents from Tule Lake to Helena Montana.*

2021.001.028

**Matsuoka James Masao (Jimmy)**

*Born in 1913, James worked as a wholesale manager in the Kent and Auburn area. He was incarcerated at Pinedale and Tule Lake. In 1942, he moved to Helena MT along with his wife, Amy, and daughter, Janice.*

2021.001.008

2021.001.029

2021.001.028\*

2021.001.030\*

**Matsuoka, Tom (Takeo)**

*Born in 1903, Tom worked as a wholesale manager in the Bellevue area. He was incarcerated at Pinedale and Tule Lake before moving to Heart Mountain WY in 1944. Died in 2001 in Vancouver WA.*

2021.001.004

2021.001.007

2021.001.022

2021.001.025

2021.001.029

**Matsuoka Family**

2021.001.002

2021.001.005

2021.001.021

2021.001.026

**Matsushita, Tadashi**

*Born in 1918, Tadashi worked as a truck farmer in the Bellevue area. He was incarcerated at Pinedale and Tule Lake.*

2021.001.011

**Matsuzama, Joe**

2021.001.002

**Matsuzawa Family**

*John, Shin, Joe, Kuni, Tom, Roy.*

2021.001.002

2021.001.029

**Mizokawa Family**

*Hiroshi, Naosabura, Shigeo, Miyuki, Tsumoru, Enjiro, Chika, Sakai*

2021.001.002

**Murakami, Keyakatao (Keo)**

Born in 1916, Keo worked as a wholesale manager in the Kent and Auburn area. He was incarcerated in Pinedale and Tule Lake camps.

2021.001.007\*

2021.001.004\*

**Murakami, Mitsuguo (Mits)**

*Born in 1921, Mitsuguo worked as a driver in the Kent and Auburn area. He was incarcerated at Pinedale & Tule Lake camps. He enlisted and served in 1943, with the 2nd Battalion E Company. He died in 2008 in Phoenix AZ.*

2021.001.007

**Murakami, Sueo [Suio]**

*Born in 1926, Sueo worked as a photographer in Pinedale and Tule Lake camps. In 1944, he had an address in Minidoka ID. He served with the 6 Snel 45-0. In 2001, he died in Peoria, AZ*

2021.001.007

**Murakami, Tsugo**

*Born in 1920, there is no record of Tsugo being incarcerated. He enlisted in Canyon County, Idaho and served in the 2nd Battalion F Company and 6 Sav 44-02. He died in 1946 in Caldwell, Idaho.*

2021.001.007

**Nakanishi, Frank**

*Born in 1914, Frank worked as a truck farmer in the Kent and Auburn area. He was incarcerated in Pinedale and Tule Lake camps.*

2021.001.008

**Nakanishi, Sut**

2021.001.004

**Natori, Edwin (Ed)**

*Born in 1910, Ed worked as a manager at Pinedale and Tule Lake.*

2021.001.016\*

2021.001.030

**Nishimoto, Joe T**

*Born in 1918, Joe worked as a truck farmer near Kent and Auburn. He was incarcerated at Pinedale and Tule Lake. He served in the army.*

2021.001.012

**Okimoto, Frank**

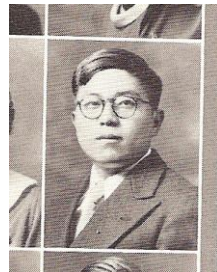
*Born in 1915, Frank worked as a farmer near Kent and Auburn. He was incarcerated at Tule Lake before enlisting in the 2nd battalion G-Company.*

2021.001.008

2021.001.031

**Okimoto, John (Johnnie)**

*Born in 1917, John was in the 1935 class of Kent High School. He was incarcerated at Pinedale and Tule Lake camps where he worked as a cashier.*



JOHNNIE OKIMOTO  
"Keeper of the Bees (B's)"  
Honor Roll 2, 3; K-Club 2,  
3, 4; K-Hi Staff 4; Torch 3, 4;  
Class Treas. 3; Vodvil 2.

2021.001.012

**Oliver**

*Non-Japanese neighbor who visited incarcerated friends and stored belongings for them.*

2021.001.004

2021.001.029

**Olson**

*Non-Japanese lawyer who represented Japanese owners while they were incarcerated.*

2021.001.026

Commented [3]: No good info

**Saito, Ernest**

*Born in 1885, Ernest owned White River Packing Company and lived with his wife, step-daughter, and son in the Bereiter House. He was not incarcerated and moved to Wyoming before going to Oregon. Ernest died in 1947 in Ontario OR.*

2021.001.004

**Saito, Ray Kent**

*Born in 1926, Ray was Ernest Saito's son and lived with his family in the Bereiter House. He was not incarcerated but instead moved with his family to Wyoming and Oregon. He enlisted in 1945 but was not called up. He returned to the Seattle area to complete his education.*

2021.001.008



Back Row: Lauren Seymour, Eugene Waller, Bob Reed, Bob Tabbutt, Bill Wandrey, Jack Nelson, Mr. Moergeli.  
Middle Row: Jim Nakatsuka, Ray Saito, Joe Stoneburner, George Muttart, Chester Waller, Bill Wilson, Shigery Toyoshima.  
Front Row: George Saylor, George Yokota, Don Potter, Albert Sells, Elsworth Wolfe, Harlan Rugg, Henry Tamada.

**Shimogaki, Haruki**

*Born in 1918, Haruki worked as a truck farmer near Bellevue. He was incarcerated at Pinedale and Tule Lake camps.*

2021.001.019

2021.001.025

2021.001.026

**Smith Family**

*Non-Japanese family who ran a large dairy in the valley.*

2021.001.012

**Sorakubo, Torao**

*Born in 1920, Torao worked as a truck farmer near Bellevue. He was incarcerated in Pinedale and Tule Lake camps.*

2021.001.004

2021.001.006\*

2021.001.007

2021.001.017\*

2021.001.018\*

2021.001.020\*

2021.001.027\*

**Styker**

*Non-Japanese without much information about him available.*

2021.001.025

**Takeda Family**

*Possible typo in reference to the Taketa Family.*

2021.001.012

**Takeshita, Frank**

*Born in 1907, Frank worked as a truck farmer near Kent and Auburn. He was incarcerated at Pinedale and Tule Lake.*

2021.001.009

2021.001.005

**Taketa, George Akio**

Born in 1919, the oldest Taketa brother, George graduated from Kent High School in 1938, the same year as Pete Taketa. He worked as a truck farmer and electrician's assistant while incarcerated at Pinedale and Tule Lake camps. He served in 6.Snel 45-07. In 1997, George died in San Pedro California.



Eugene Sorenson.  
Betty Stasley—Orchestra 2, 3, 4; Torch Society 3, 4; K Club 3, 4; Home Room Secretary 2, 4; Operetta 2, 4; Music Meet 3, 4.  
Mary Jane Stewart—Annual Staff 2, 4, Editor 4; U. of W. Conference 4; Student Council 2, 3, 4, Vice-President 4; Torch Society 3, 4; Girls' Honor Club 2, 3, 4; K Club 2, 4.  
Sylvia Stosach—Entered from Vienna, South Dakota—~~to Cleveland, Ohio 4.~~  
George Taketa—Science Club Secretary-Treasurer 4; Boys' Club Cabinet 4.  
William Taketa—Business Club 4; Kay-Hi Staff 4.  
Clay Tamada—Torch Society 2, 4; Girls' Honor Club 2, 4; Gym 3; Play Day 3; Senior Hall 4.  
Sakaye Tamada—Girls' Honor Club 2, 4, Secretary 4; Torch Society 2, 3, 4; Gym 2, 3, 4; K Club 2, 4; Business Club Secretary 4.  
Frank Thompson—Science Club 4.  
Mike Thomson—Student Body Secretary-Treasurer 4; Criterion Business Manager 4; U. of W. Conference 4; Track 4; Hi-Y 4; Revelers 4.

2021.001.001

**Taketa, Pete (William) Hiroshi**

Born in 1920, the middle Taketa brother went by Pete his whole life. He graduated with George in 1938 from Kent High School. He worked as a warehouse typist at Pinedale, Tule Lake, and Heart Mountain camps. In 1944 he left Heart Mountain for Fort Logan where he would serve with the 100th battalion C company. Pete died in Italy on April 28, 1945 and was buried at Hillcrest Cemetery.

2021.001.001

**Taketa, Harry Harou**



SPENCER, ELMER  
TAKATSUKI, NATSUKO—Entered from Cleveland, 4, Vaudeville, 4.  
TAKETA, HARRY—Vigilantes, 2, 3, 4, Advertising, 2, 3, 4, Vaudeville, 4, Smoker, 4, Paddle Squad, 3, 4, Scoreboard, 2, 3, 4, Home Room Sec., 2.  
*to of truck  
sub, gas  
oil, out.*

Born in 1922, Harry is the youngest Taketa brother. He graduated from Kent High School in 1941. At Pinedale, Tule Lake, and Heart Mountain, Harry worked as a vegetable farmer and dishwasher. 1945 he left Heart Mountain to travel to Vale OR. He served with the 6.Snel 44-12. In 2015, Harry died in Kent.

2021.001.001

**Toki Family**

*Possibly from Tacoma or possibly a first name.*

2021.001.004

**Tsubota, Henry**

*Born in 1910, Henry graduated from Kent High School in 1928. After graduation he worked as a truck farmer. He was incarcerated*

*at Mayer and Abraham camps in central Utah.*

2021.001.003

**Tsubota, Hiro (Hiromu)**

*Born in 1915, Hiro worked as a seamstress at Pinedale and Tule Lake camps.*

2021.001.008

2021.001.013

**Tsubota, Min (Minoru)**

*Born in 1919, Min graduated from Kent High School in 1937. He enlisted in 1941 and was featured in the North American Post.*

2021.001.013



CAST (Reading From Left To Right)

1 ROSEMARY MURRAY  
"Babe Eyes"  
Girls' Club 2, 4; Tri-Alphas

2 LUDWIG KRUISE  
"Swede"

9 HENRY TSUBOTA

13 SHIRLEY LUNY  
"Bitch"



**Seniors**

The more serious side of school life has not been neglected by this versatile class, which has furnished many names for the scholastic honor roll and the Torch Honor Society. Fourteen seniors have been Torch members for three years. Most of these will carry permanent Torch pins with them after graduation as a mark of scholastic attainment. Four seniors have been active on the debate team. In underclass years, three members of the class of '37 found places on the declamation team, and nine participated in the one-act play contest. Individual honors have been won in agriculture, commercial subjects, science and other special fields. Their high school life over, the seniors take with them the real knowledge, the ability, and the earnest desire to succeed which have made their student life a success.

- |   |   |   |   |
|---|---|---|---|
| <p><b>CHARLES PRENTICE</b><br/>Entered from Ontario, Montana 4; H.C. 4; Key-Staff 4; Annual Staff 4; Vaudeville 4; Basketball 4; Senior Ball 4; Junior 4; Art 4.</p> <p><b>TED SEARS</b><br/>Declamations 4; Vigilantes 3, 4; Secretary 4; Annual Staff 3, 4; Football 3; Music Meet 2, 4; Fire Squad 4; All-School Play 4.</p> <p><b>RAY SUMMERS</b><br/>Football 2; Track 3, 4; F. F. A. Club 3, 4.</p> <p><b>RUTH WATANABE</b></p> | <p><b>WARREN RASMUSSEN</b><br/>Vaudeville 4; Senior Ball 4; Field Soccer 3, 4; Junior Prom 3; Golf 2; F. F. A. 3, 4.</p> <p><b>VERNA SEASHORE</b><br/>Entered from North Dakota 4; Girls' Honor Club 4; Vaudeville 4.</p> <p><b>LOIS SWAN</b><br/>Vaudeville 2, 4; Girls' Athletics 2, 3; Junior Prom 3.</p> <p><b>JIM WILSON</b></p> | <p><b>ROY SAGE</b><br/>Student Body Vice-President 4; Mixed Quartette 3, 4; Home Room President 3; H.C. 3, 4; Class Treasurer 3; Chorus 3, 4; Band 2, 3.</p> <p><b>BRUCE SHAFER</b><br/>Football 2, 3, 4; Basketball 2, 3, 4; Tennis 2, 3, 4; Club 2, 3, 4; Vigilantes 2, 3, 4; W. S. C. Conference 4; Student Council 2, 3.</p> <p><b>FRANCES TASONI</b><br/>Torch Society 2, 3, 4; Home Room President 3; Music Meet 3; Vaudeville 2, 4; Operetta 3; Honor Club 2, 4; K. Club 4; Girls' Athletics</p> | <p><b>THOMAS SAVIDGE</b><br/>Field Soccer 2, 3, 4; F. F. A. 3, 4; Track 2.</p> <p><b>HOWARD SMITH</b><br/>Football 2, 3, 4; All-Conference 4; Captain 4; F. F. A. President 3, 4; Girl Prom Judging Team 3; K. Club 2, 3, 4; Vigilantes 4; Vigilantes 3, 4.</p> <p><b>MINORU TSUBOTA</b><br/>H.C. Secretary-Treasurer 4; Football Manager 3, 4; Operetta 3; Vaudeville 2; Band 2, 3; Music Meet 2, 3; Chorus 3, 4; Stage Force 3.</p> |
|---|---|---|---|

**Umbarger, Frank**

*Non-Japanese property officer for the War Relocation Authority.*

2021.001.011

**Valekburgh, Van**

*Non-Japanese neighbor who worked in farming. Conflicted with **Shimogakis** when he destroyed their greenhouse and refused to compensate them.*

2021.001.017

2021.001.019

2021.001.021

2021.001.024

2021.001.025

2021.001.026

2021.001.027

**Walker**

*Non-Japanese Senior Property Officer for the War Relocation Authority.*

2021.001.011

**Walren**

*Non-Japanese employee of the Washington Frosted Food Company.*

2021.001.030

**Watanabe, Jim**

*No reliable information.*

2021.001.004

2021.001.008

**Wilkinson**

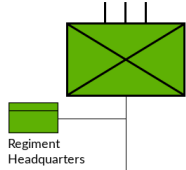
2021.001.001

**William, Tom**

2021.001.022

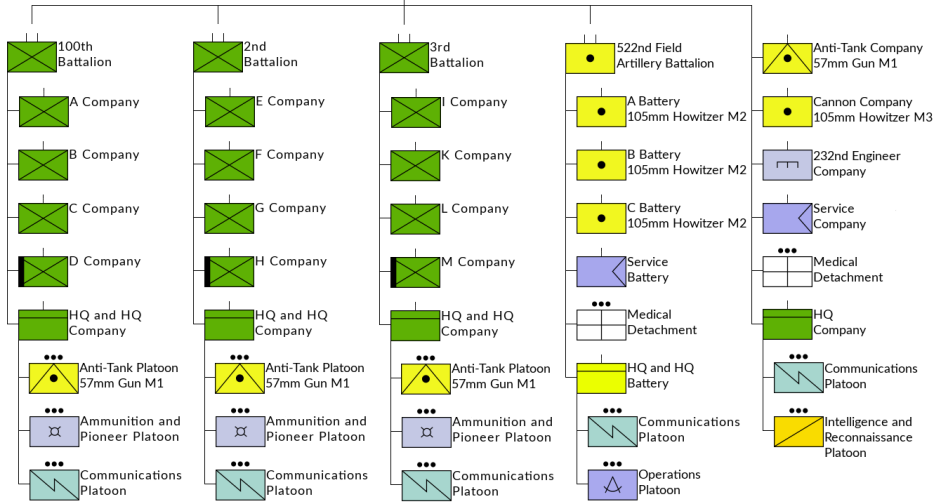
**Yabuki**

2021.001.022



# 442nd Regimental Combat Team

June 1944



T&OE 7-11, Infantry Regiment (1944-02-26)  
 T&OE 7-12, Headquarters and Headquarters Company, Infantry Regiment (1944-02-26)  
 T&OE 7-15, Infantry Battalion (1944-02-26)  
 T&OE 7-16, Headquarters and Headquarters Company, Infantry Battalion (1944-02-26)  
 T&OE 6-25, Field Artillery Battalion, Motorised, 105mm Howitzer, Truck Drawn (1944-09-27)  
 T&OE 6-26, Headquarters and Headquarters Battery, Field Artillery Battalion (1944-09-27)  
 442nd Veterans Club, 442nd Regimental Combat Team Organizational Chart, <http://www.442.us.com/images/orgchart.pdf>