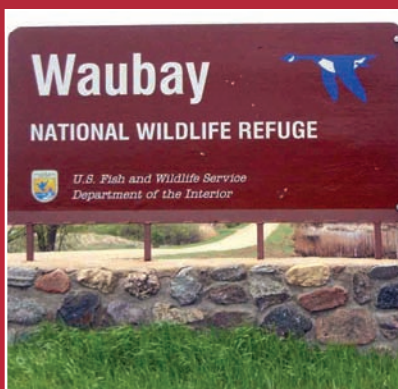


# DAY COUNTY

## *New Resident Directory*



*Welcome*



City Information • Churches • Clubs • Goods  
Services • Schools • Post Offices  
*and much more all inside!*

# Welcome!



Located on the south side of the Arts Council building, the Day County mural garden was dedicated in 2005

Ever felt lost and unsure, wondering who to contact and whose services to utilize when moving to a new area?

The *Reporter & Farmer* with the Webster Area Chamber of Commerce and Webster Area Development Corporation has compiled the New Resident Directory to help newcomers transition smoothly and successfully into the Day County area. Not only will this publication help educate people new to the area but also longtime residents on the many goods and services available right here in the Day County area.

Have you ever wondered how to get information about a particular club or organization? Have you ever needed a certain service but were not sure where it was offered?

Thank you to the many advertisers who have made this publication possible. Please patronize them whenever possible. Local businesses are a benefit to our community, so shop locally first.

We suggest keeping this directory close to your telephone so when a question arises, it will be right there as a handy reference.

For more information or a copy of this directory, contact the Webster Area Chamber of Commerce at (605) 345-4668 or visit your local city hall.

Advertisers who wish to be included in the directory next year can contact the *Reporter & Farmer* at (605) 345-3356.

If we have missed your club or organization, we apologize. Please let us know, so we can get you included in next year's edition!

## Welcome to Day County



**New in town? Catch up on all the latest in the Reporter & Farmer**

Serving the Day County area since 1881, the Reporter & Farmer is your hometown newspaper - now in print and online. In addition to the weekly paper, we carry a variety of office supplies and offer a wide array of services including black and white and color copying, faxing and printing of business cards, letterheads, envelopes and many more. Come in and let us help you!

*Subscribe today!*

**Reporter & Farmer**

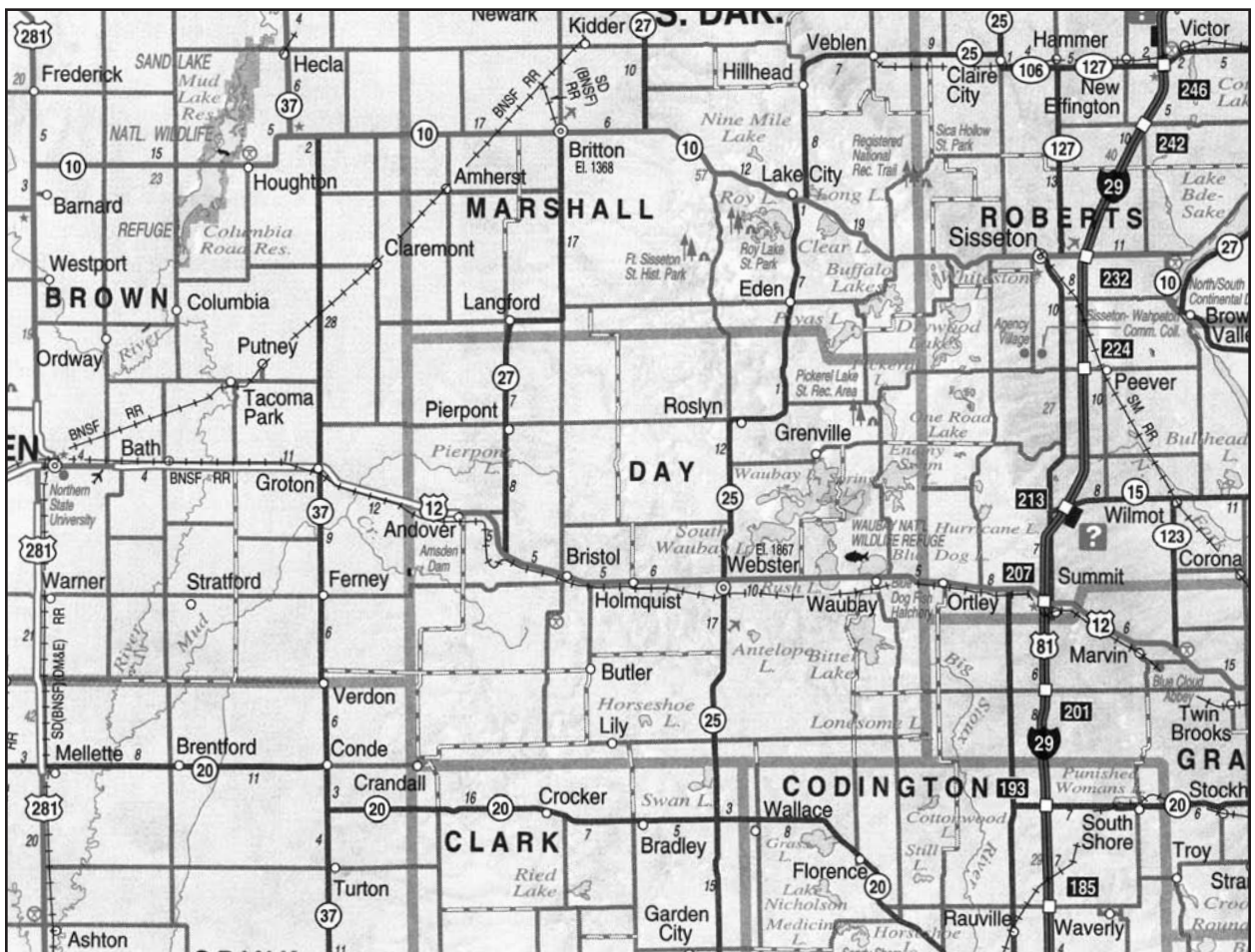
516 Main St., Webster • 345-3356  
e-mail: [suhrs@reporterfarmer.com](mailto:suhrs@reporterfarmer.com)  
[www.reporterandfarmer.com](http://www.reporterandfarmer.com)

The newspaper has made every effort to assure the accuracy of information in this publication. The publishers assume no liability for omissions, errors or changes.

*John and LeAnn Suhr*  
Publishers

# Table of Contents

Questions and Answers .....	6	Roslyn .....	25
Day County Info .....	7	Grenville .....	26
Andover .....	11	Blue Dog State Fish Hatchery .....	27
Post Offices .....	12	Waubay .....	28
Bristol .....	13	Webster .....	29
Pierpont .....	14	Day County Museum .....	30
Waubay National Wildlife Refuge .....	15	Pickrel Lake State Rec Area .....	31
Schools .....	16	Local Lake Legends .....	32
Lily .....	17	Don't Forget to Contact .....	34
Butler .....	18	Tax Info .....	36
Museum of Wildlife, Science & Industry..	19	Fort Sisseton .....	38
Holmquist .....	20	Clubs & Organizations .....	39
Pumpkin Fest .....	21	Glacial Lakes Fishing .....	41
Churches .....	22	Who Does What? .....	43
County & State Government .....	23	Business alphabetical list .....	47
City Info .....	24	Business categorical list .....	52



# Day County New Resident Directory Quick Reference

DISPLAY ADVERTISERS IN THIS ISSUE ARE LISTED BELOW BY NAME AND PAGE LOCATION IN THE NEW RESIDENT DIRECTORY

## Accommodations

B & S Lodging .....	38
Boomer's Outback .....	33
The Galley Steakhouse & Lounge .....	13
Roy Lake Resort & Lodge .....	42
South Side Campground .....	28

## Auto Sales/Parts/Equipment

Dave Hahler Automotive .....	11
Grosek's .....	43
HedahlsAuto Plus .....	14
Northland Auto Center .....	21
Studevant's Auto Parts .....	26
Webster Auto Care .....	7
Webster Tire, Inc. ....	25

## Bait & Tackle, C-Stores

Cenex .....	45
Community Oil of the Glacial Lakes .....	46
HR One Stop .....	30
Pike's Clark .....	43
Sportsmans Cove .....	26

## Development

Bristol Commercial Club .....	10
City of Webster .....	37
Webster Area Chamber of Commerce .....	8
Webster Area Development Corporation .....	39

## Entertainment

Webster Theatre .....	25
Museum of Wildlife, Science & Industry .....	28

## Financial and Insurance

CorInsurance .....	10
CorTrust Bank .....	10
Dacotah Bank .....	31
Great Western Bank .....	7

## Housing/Real Estate/Storage

Dakota Properties Real Estate .....	32
Delaney & Sannes Real Estate .....	19
Johnson Rental-Storage .....	17
Larsen Realty .....	17

## Liquor

The Decoy Bar .....	11
Webster American Legion .....	22
Webster Munical Liquor .....	21

## Marine Dealer/Service

Webster Marine .....	40
----------------------	----

## Veterinary Clinic

Webster Veterinary Clinic .....	27
---------------------------------	----

## Medical/Health Care

Avera Medical Group Webster .....	20
Bethesda Home .....	19
Dorsett Chiropractic Center .....	27
Cornwell Drug .....	12
Sanford Medical Center .....	Back Cover
Sanford Webster Clinic .....	Back Cover
Strand-Kjorsvig Living Center .....	38
TLC Physical Therapy .....	41
Webster Dental .....	6

## Churches

Freedom Worship Service .....	46
Tabor Free Lutheran Church .....	53

## Restaurants

A&W Family Restaurant .....	9
The Galley .....	13
The Ice Cream Shack .....	46
New Frontier Steakhouse & Lounge .....	43
Pereboom's Cafe .....	33
Purple Cow Ice Cream Parlor .....	14
Subway .....	23
Webster's Dakota Diner .....	36

## Retail/Groceries/Services

A Cut Above .....	7
A&S Hardware Hank & Rental .....	10
Blossom Shoppe & Gifts .....	28
Day County TV & Appliance .....	17
Delaney, Nielsen & Sannes PC .....	19
Eden Lumber .....	40
Fiksdal Funeral Service .....	30
Fiksdal Furniture & Gifts .....	30
Flower Cart .....	27
Fritz's Furniture & Antiques .....	11
G. Todd Garry .....	36
HAYCOT Manufacturing & Ag Parts .....	40
Johnson Lumber .....	14
Jorgenson Meat Store .....	14
Keller Mechanical Inc. ....	7
Mike's Jack & Jill Food Center .....	16
Northside Implement .....	22
NorthStar Mechanical Inc. ....	28
RDO Equipment Co. ....	21
Reporter & Farmer .....	23
Tailfeather Productions .....	6
Vogl's Carpet .....	35
Vogl's Woodworking .....	35
Watertown Co-op Elevator .....	38
Webster Lumber Home Center .....	18

## Utilities

ITC .....	34
James Valley Telecommunications .....	15
Lake Region Electric Association .....	36

For more information on these establishments, see advertisements in this issue.

## New to town? Your questions answered!

### How do I get city water service?

Your community city hall, see listing on page 23

### How do I get natural gas/electric service?

NorthWestern Energy  
(800) 245-6977

Lake Region Electric Association, Inc.  
(605) 345-3379

Otter Tail Power  
(800) 257-4044

### Who provides phone service?

ITC  
Interstate Telecommunications Cooperative, Inc.  
(605) 345-4260

MidContinent Communications  
(800) 888-1300

James Valley Telecommunications  
800-556-6525

Venture Communications Cooperative  
(800) 200-0587

### Who provides Internet access?

ITC  
Interstate Telecommunications Cooperative, Inc.  
(605) 345-4260

Midcontinent Communications  
(800) 888-1300

James Valley Communications  
800-556-6525

### Who provides cable television?

ITC  
Interstate Telecommunications Cooperative, Inc.  
(605) 345-4260

Midcontinent Communications  
(800) 888-1300

### Questions on water and sewage billing?

City hall water department  
Your community city hall, see listing on page 24

### Water Hook ups

City hall  
Your community city hall, see listing on page 24

### Garbage Haulers

Dependable Sanitation  
(605) 225-9316

Cody Sanitation  
(605) 698-4417 or 290-5698

### How do I get to the landfill?

(605) 345-4839 in Webster or your local town hall

### To get my vehicle license plates?

Day County Treasurer  
(605) 345-9510

### To obtain a dog or cat license?

City hall  
Your community city hall, see listing on page 24



615 Main Street, Webster  
**605.345.2550**  
tailfeatherproductions.com

*Tailfeather Productions*  
Photography by Stacy Williams Dunsen

## Webster Dental

### Family and Cosmetic Dentistry

**Cleanings • Crowns  
Dentures • Partial  
Cosmetic Veneers  
Root Canals**

**Dr. Shervin Meshkian**  
**605-345-3000**

101 Peabody Dr. Suite #3, Webster, SD  
Use Sanford Medical Clinic Entrance

**To register to vote?**

Day County Auditor  
(605) 345-9500

**To obtain birth or death certificates or marriage license?**

Day County Register of Deeds  
(605) 345-9506

**If I have a lost dog or cat?**

Your community city hall, see listing on page 24  
City of Webster Police 345-4040  
Day County Sheriff 345-3222

**How do I report a crime or contact law enforcement?**

In the event of an emergency call 911  
for all other non-emergencies call the  
Day County Sheriff at 345-3222

**In the city of Webster**

In the event of an emergency call 911  
For non-emergencies call the  
Webster police 345-4040

**Where do I get a driver's license?**

In the basement of the Day County Courthouse on  
Fridays.

# Day Co. Info

**History**

The settlement of the territory which now forms Day County began in 1880. The county was organized under the territorial laws by a board of commissioners appointed by Governor Ordway. The first meeting of the board was held in Webster on Jan. 2, 1882, and the town of Webster was named county seat. On May 2, 1885, a special election was held in the county submitting the question of dividing the county. The result was in favor of division and Marshall County was taken from the northern part of Day County. The county is named after Merritt H. Day, pioneer and 1879 Dakota Territory legislator.

**Population (2010)**

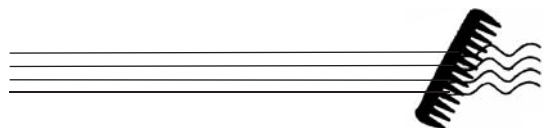
5,710

**Density**

6 people per square mile

*A Cut Above*

Italy-Hair Fashion N.A. Inc. Regional Educator



For all your hair care needs.  
Call for an appointment today.

**Judy Pesall**  
Owner/Stylist  
345-3715

**HELL**  
HEATING & COOLING PRODUCTS

**KMO**  
KELLER MECHANICAL INC.

523 Main Street • Wallace, SD  
605-758-2900



**Great Western Bank**  
Making Life Great  
Member FDIC

Webster: 1301 Main St. • 345.4671  
GreatWesternBank.com



**COMPLETE AUTO CARE**

**Webster  
Auto Care  
Wants Your  
Business!**

- Air Conditioning
- Alignment • Brakes
- Complete exhaust work
- Pipe bending • Tune-ups
- Oil change and lube

**Webster Auto Care**

**West Hwy. 12  
345-4684**

# WEBSTER AREA

## A PLACE FOR ALL SEASONS

Come check out these fun events...



**32nd Annual  
Farm, Home & Sport Show**  
Jan. 18-19, 2013

### Pumpkin Fest

Oct. 11-12, 2013



### 2013 Dates to remember!

**Jan. 18-19:** Farm, Home & Sport Show  
**May 4:** Spring Fling & Citywide Rummage Sales  
**June 7-9:** Fort Sisseton Festival  
**June 28-30:** Webster High School Alumni Reunion  
**Aug. 1-4:** Day County Fair  
**Aug. 3:** Back-to-School Citywide Rummage Sales  
**Oct. 11-12:** Pumpkin Fest/Night Parade  
**Dec.:** Retail Holiday Promotion

### 2014 Dates to remember!

**Jan. 31-Feb. 1:** 33rd Farm, Home & Sport Show,  
National Guard Armory  
**May 3:** Spring Fling & Citywide Rummage Sales  
**June 6-8:** Fort Sisseton Festival  
**June 27-29:** Webster High School Alumni Reunion  
**Aug. 7-10:** Day County Fair  
**Aug. 9:** Back-to-School Citywide Rummage Sales  
**Oct. 10-11:** Pumpkin Fest/Night Parade  
**Dec.:** Retail Holiday Promotion

## Our community has MUCH to offer!

**Fishing • Hospital • Free city campground • Waubay Wildlife Refuge  
Fort Sisseton State Park • Nine hole par 36 golf course  
Blue Dog State Fish Hatchery • Museums • Waterfowl hunting**

**30 great fishing lakes within 30 miles  
80+ miles groomed snowmobile trails  
Accredited school • Heated outdoor pool**

For details, contact the  
**Webster Area Chamber of Commerce**

PO Box 123, Webster, SD 57274  
(605) 345-4668 or 1 (888) 571-7582

E-mail: [wchamber@itctel.com](mailto:wchamber@itctel.com) • [www.webstersd.com](http://www.webstersd.com)



**Spring Fling**



**Fishing & Hunting**

## Geography

According to the U.S. Census Bureau, the county has a total area of 1,091 square miles, of which, 1,029 square miles is land and 62 square miles is water.

## Cities and towns

Andover, Bristol, Butler, Crandall, Grenville, Holmquist, Lily, Pierpont, Roslyn, Waubay and Webster

## Townships of Day County

Andover, Bristol, Butler, Central Point, Egeland, Farmington, Grenville, Highland, Holmquist, Homer, Independence, Kidder, Kosciusko, Liberty, Lynn, Morton, Nutley, Oak Gulch, Racine, Raritan, Rusk, Scotland, Troy, Union, Valley, Waubay, Webster, Wheatland and York

## Adjacent counties

Marshall County, South Dakota - north  
Roberts County, South Dakota - east  
Grant County, South Dakota - southeast  
Codington County, South Dakota - southeast  
Clark County, South Dakota - south  
Spink County, South Dakota - southwest  
Brown County, South Dakota - west

## Major highways

U.S. Highway 12  
SD Highway 25  
SD Highway 27

## National protected area

Waubay National Wildlife Refuge

## Commissioners (as of Jan. 1, 2013)

Rick Tobin, chairman; Gary Block, Linda Walters, Jim Tompkins and Darrell Hildebrant

## Demographics

### Historical populations

Census	Pop.	%±
1900	12,254	—
1910	14,372	+17.3%
1920	15,194	+5.7%
1930	14,606	-3.9%
1940	13,565	-7.1%
1950	12,294	-9.4%
1960	10,516	-14.5%
1970	8,713	-17.1%
1980	8,133	-6.7%
1990	6,978	-14.2%
2000	6,267	-10.2%
2010	5,710	-9.6%

As of the census of 2010, census officials released further Day County figures which will give local officials a better picture of their respective communities.

Day County now has a population of 5,710 of which 5,030 are white, 542 are Native American, 12 Asian and 62



## Family Restaurant

At the junction of Highways 12 & 25  
**(605) 345-4140**  
Open 10:30 a.m. to 10:30 p.m.

- Dine in or Drive Thru
- WiFi
- Like us on Facebook

**A&W Restaurant of Webster!**

### FAMILY PAK SPECIAL

**12 Pieces Broasted Chicken**

- ✓ 1 Family French Fry or Mashed Potatoes and Gravy
- ✓ 1 Pint Potato Salad or Cole Slaw
- ✓ 1/2 gallon of Root Beer

- Burgers
- All American Dogs
- Hometown Favorites
- Ice Cream Treats
- Daily Specials
- Children's Menu
- Catering Available



are Latino.

Demographics show the county population is made up of 2,867 males and 2,843 females. By age, 4,463 county residents are 18 years and older while 1,247 are under 18.

The 50-64 age bracket is the largest at 1,356 while 65 and over number 1,309. One of the smallest age brackets is 20-24 with 243.

Day County has 3,630 housing units of which 2,504 are occupied and within that group 1,918 owner occupied. There are 586 renter occupied units with a total population of 1,241. There are 557 housing units with minors, 1,126 vacant units. Market listings showed 69 units for rent and 31 units for sale. Occasional use housing numbered 765 units.

County seat Webster has a total population of 1,886 of which 1,794 are white, 44 Native American, four Asian, three African-American and 35 of two or more races.

The town has 893 males and 993 females. 1,454 residents are age 18 and older while just 432 are under 18. By age bracket 65 and over totals 481, 50-64 is at 356 and 20-24 just 95.

Webster has 1,007 total housing units of which 878 are occupied and of that 594 owner occupied. There are 284 renter occupied units and 215 units with minors. There were 129 vacant units with 42 for rent and 13 for sale. Occasional use housing totalled 24.

Waubay, Day County's second largest town, has a population of 576 with 345 whites, 210 Native American, two Asian and 19 two or more races. There were 282 males and

294 females with 153 of the total under 18 and 423 over that age. The 50-64 and 65 and over age were the two largest age brackets at 118 each and there were 23 in the 20-24 age bracket.

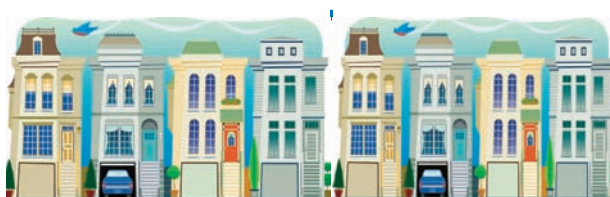
Waubay had 374 housing units of which 242 were occupied and 181 of those were owner occupied, 61 renter occupied and 132 vacant. A total of 60 units housed minors. Five units were for rent and four were for sale. There were 94 occasional use housing units.

Bristol's total population was 341 with 335 white, and six of which two or more or other races. A breakdown showed 164 males and 177 females with 52 under age 18 and 289 over that age. The bracket 65 and over was the largest at 124, while 50-64 numbers 54 and 35-39 came in at 59. There were 16 in the 20-24 age bracket.

The town had 176 housing units of which 150 were occupied and of those 117 were owner occupied. Renter occupied units numbered 33 and 27 units had minors, four units were for rent and three for sale with eight occasional use housing units.

Roslyn's population was 183 with 179 white, two Native American and two other races. By sex, Roslyn had 86 males and 97 females with 31 under age 18 and 152 over. The biggest age bracket was 65 and over with 76, 50-64 had 38 and 20-24 had seven.

The town had 105 housing units of which 77 were owner occupied and 14 renter occupied. There were 12 units with minors and 28 vacant units. Four units were for rent and two for sale with 11 occasional use housing units.



## Bristol Commercial Club Members Welcome You to Bristol

Butler/Bethesda  
Lutheran Church  
Bergen Lutheran  
Church  
Bristol Brush  
Bristol Storage  
Company  
Capitol Lanes  
& Lounge  
Dale's Service  
& H.O.T. Spot  
Duerre Excavating  
First Savings Bank  
Gar's Garage, Inc. -  
Your Lone Stop  
Greg Johnson  
Construction, Inc.  
Hansmeier & Son Inc.  
Seed Company  
Jacobson Insurance &  
Real Estate Agency

Mavis McKane  
Independent Beauty  
Consultant  
Nygaard's Nest &  
Rest Motel  
Hunting & Fishing  
Lodge  
St. Anthony's Catholic  
Church  
South Dakota Wheat  
Growers and  
Fertilizer Plant  
Sun Dial Manor, Inc.  
and Johnson Assisted  
Living Center  
United Methodist  
Church  
U.S. Post Office  
Westside Wesleyan  
Church

[www.bristolsd.com](http://www.bristolsd.com)

**24 HOUR ATM**  
**CorTrust Bank**  
345-3342 | [www.cortrustbank.com](http://www.cortrustbank.com)  
Member FDIC | ID 405612

**CorInsurance**  
345-3320 | [www.corinsurance.com](http://www.corinsurance.com)

**A&S  
HARDWARE  
HANK  
& Rental**  
Tools & Equipment

**NEED  
SOMETHING?  
WE'VE GOT  
YOU COVERED!**

**(605) 345-3821**  
**Jct. of Hwys. 12 & 25 • Webster**  
M-F – 7 a.m. to 7 p.m.    Sat. – 7 a.m. to 6 p.m.  
Sunday – noon to 5 p.m.

# Andover

The town of Andover is located in what is known as "The Valley" with the Coteau Hills to the south and east. Before it was settled, it was unbroken prairie with a beautiful expanse of grass and flowers with few stones to speak of, and a few winding creeks which furnished water for the herds of antelope and buffalo that roamed the countryside.

Andover came into existence in 1880, as Station 80, Greenley County, Dakota Territory but was renamed when the site was platted in 1881.

Andover has two possible explanations as to how it got its name. The more probable one being that the superintendent of the Milwaukee Railroad, Mr. Prior, named it after Andover, MA.

Another version says that the name was given

by foreign railroad workers who, after building through the rugged Coteau Hills, were relieved when they reached the open plains. One of them exclaimed, "End over." Later, the story adds the two words were combined into one and the E was changed to A.

Andover owes much of its development to the railroad which began running regularly in June or July of 1881. It brought building supplies, coal and special tar paper for claim shacks.

The depot was the first wooden building in town. It was completed in 1881 and was also used as the post office and worship center. Miss Ellen Bryant was the first postmistress.

In 1885, the Milwaukee Railroad opened the north branch from Andover to Harlem, ND, and made its first round trip in 1887. Andover was incorporated in 1886, the same year the Methodist Church was built. At this time, Andover was steadily growing with a population of 500.

By 1912, there was just about every type of business in Andover – elevators, hotels, general stores, banks and a creamery.

**DAVE**

GM

HAHLER

GM

AUTOMOTIVE, INC.

www.hahlerauto.com

EAST HWY 12 • WEBSTER, SD • (605) 345-4792 • (800) 789-2277  
World Class Service - Hometown Friendliness

Full Service Dealership:

• Sales • Parts • Towing • Service • Body Shop • Lockout Service  
Hours: Monday-Friday 8:00 a.m. - 5:30 p.m. • Saturday 8:00 a.m. - Noon

Fritz's Furniture  
& Antiques

500 3rd St. Bristol, SD 57219  
In the old schoolhouse

Hours: Mon.-Fri. 10 a.m.-6 p.m.  
Saturday 9 a.m.-4 p.m.

Phone: 605-492-3199

Owners: Mike, Tina and Justin Fordham



THE DECOY BAR

---

HAPPY HOUR

4:30 - 6:30 nightly

Monday - \$1.75 Ponders

Tuesday - Happy Hour ALL DAY

Wednesday - \$1.75 Ponders

Thursday - 2-fers 9-10:30 p.m.

Saturday - Happy Hour Noon-1 p.m.

---

POOL • VIDEO LOTTERY  
GAMES • SHUFFLEBOARD

---

Webster's only "shuck 'em  
and chuck 'em" peanut bar



## United States Post Office

1-877-275-8777

<http://www.usps.com>

### Andover

202 S Main St  
Andover, SD 57422-9998  
298-5636

### Bristol

116 Main St S  
Bristol, SD 57219-9998  
492-3212

### Grenville

915 Kosciusko Ave  
Grenville, SD 57239-9998  
486-4804

### Pierpont

121 W Main St  
Pierpont, SD 57468-9998  
325-3463

# Post Offices

### Roslyn

509 N Main St  
Roslyn, SD 57261-9998  
486-4236

### Waubay

105 N Main St  
Waubay, SD 57273-9998  
947-4262

### Webster

715 Main St  
Webster, SD 57274-9998  
345-3121

## We're Here to Help

### Drug interactions, allergies and side effects.

Not all drugs react well with your body. Some have side effects. Others trigger allergies. And some drugs when taken together create dangerous interactions.

With our pharmacy computer we maintain information on thousands of drugs as well as complete records of each prescription you have filled with us. And when we fill any prescription for you, it's checked against your record for possible effects, interactions and allergies.

***Why take chances? Bring your next prescription to us!***



# CORNWELL

701 MAIN, WEBSTER  
605-345-3351

# Drug

***Check out our Leading Collectibles,  
Abdallah Chocolates, Gift Ideas  
and Greeting Card Selection!***

# Bristol



There are many festivities that take place at zucchini fest, one including the zucchini tossing event!

Bristol is located in the western half of Day County on the main line of the Burlington Northern Railroad on U.S. Highway 12. Like so many other small towns of the upper Midwest, Bristol came into being as a result of railroad expansion. In the late 1870s, the site which was to become Bristol was known to railroad graders as Station 70. C.P. Prior, a district railroad surveyor and townsite agent, is given credit for naming Bristol in 1881. He named the town after Bristol, England. It was incorporated as a village in 1889 and as a city in 1921.

The people who settled in and around Bristol were mostly of Norwegian, Swedish and German descent.

The Brokaw House was the first structure in Bristol. It was built by Richard P. Brokaw in 1883 and rebuilt throughout the years. Television journalist Tom Brokaw is a great-grandson of Richard P. Brokaw.

These days, sponsored by the Bristol Commercial Club, Bristol's annual Zucchini Fest takes place at the end of July. The Festival begins with a free-will dinner in the community center on Main Street and continues with a cook-off contest of recipes involving zucchini, games for children and bingo.

A famous warning is heard every year: "Make sure you lock your car doors or you will leave Zucchini Fest with more zucchini in your vehicle than you probably ever wanted."

Head over to Bristol for Zucchini Fest if you are looking to have a good time with family and friends.

## THE GALLEY

### Steakhouse, Lounge and Motel

230 Hwy. 12, Webster • 345-9989

- CLEAN Hotel Rooms
- Banquet Room for 300
- Board Room for 20
- Game Cleaning Station
- Heated Dog Kennels
- Campsites with hookups



## FREE

Pitcher of Soda  
with a purchase of  
a Large Pizza

*The Galley*

### Nightly Specials

Tuesdays: Pizza Night

Wednesdays: Wing Night

Thursdays: Chislic Night

Friday & Saturday: Prime Rib Special

### For Reservations:

**(877) 869-0047**

Visit our website

[thegalleyinwebster.com](http://thegalleyinwebster.com)

or "LIKE" us on

Facebook for instant updates!

As was the case for most towns in the Dakota Territory, the location of Pierpont was dictated by the railroad.

Colonel Britton, an experienced railroad man of the Dakota Great Southern Railroad Co., chartered a railroad line to be built from Valley City, ND to Sioux City, IA. The first grading done was from Britton south to about three miles southeast of the present site of Pierpont. The intention was to run the grade past Bristol, but to do that it would have been necessary to grade up the west slope of the Coteau Hills, which was too expensive. It is told that quicksand at that spot prohibited them from finding good footings, so the plan was abandoned.

In 1885, the Chicago, Milwaukee and St. Paul Railroad became very interested in building branch railroad lines to feed freight, livestock and grain to their main line, which was already in service from Minneapolis, MN to Mobridge.

So in 1886 the rail company started grading north from Andover and made a deal with Col. Britton to purchase the right-of-way and the grade from Dakota G.S. RR Co. After connecting to the grade built the previous year, they continued north to Harlem, ND and in the spring of 1887 the train started to run on the line.

# Pierpont

The next order of business was the building of a town for the area. The land two miles north of Pierpont sounded favorable, and W.H. Lemmon, who had homestead in the area, plotted out five blocks from the west quarter of his homestead for the new town. But when the railroad wanted to buy the town-site, Lemmon refused, and the railroad decided to make Langford its station. Area settlers did raise \$500 to pay the railroad to build a side track into town. One year later, a depot was built on the future town site, and the telegraph service was incorporated.

Tradition states that the new town was named after a railroad official who lived in New York by the name of John Pierpont. Another version of it is that the man's name was J. Pierpont Morgan. There was some objection to the name Morgan for the town, so they used the first name, Pierpont.

## "Your Hometown Lumber Store"

### Quality Building Materials

#### HOURS:

Monday - Friday 7:30 a.m. - 5:30 p.m.  
Saturday 8 a.m. - 1 p.m.

### Remodeling to New Construction

Kitchen Cabinets • Room Additions • Windows  
Doors • Fencing • T-Posts • Wood Posts  
Electric Fence Supplies • Roofing • Shingles  
Steel • Homes • Garages • Shops • Pole Buildings  
And much, much... more

Now is the time to think about your building projects, new homes, shops, garages, pole buildings, sheds, etc. Let Johnson Lumber help you with Computer Design, Free Estimates, Free Local Delivery, Finding a Contractor, Electricians, Plumbers, Concrete Persons, Painters or Landscapers.

## Johnson Lumber

22 W. 5th Ave.  
Webster, SD 57274

Phone: (605) 345-6000  
or (605) 345-3761

## Purple Cow Ice Cream Parlor

33 Flavors of  
Ice Cream

Right on Hwy. 12  
Waubay, SD 605-947-4110



- Bacon
- Homemade Sausage
- Grilling Steaks • Jerky

**Jorgenson Meat Store**  
605-947-4461

## Hedahls Auto Plus

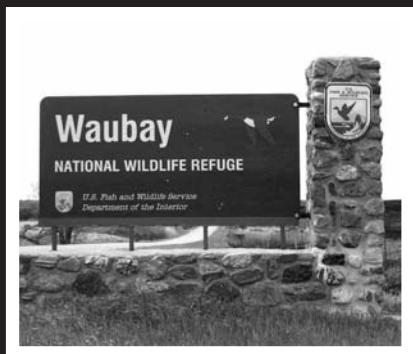
East Hwy. 12, Webster • (605) 345-3303



For all your battery needs,  
stop in and see Nathan.

**BOAT • VEHICLE  
MOTORCYCLE**

# Wildlife Refuge



The Refuge offers several opportunities to get an up close and personal look at nature

Located on the east side of Waubay Lake, Waubay National Wildlife Refuge is a must see for all visitors to Day County.

A vast array of plants, animals and landscape settings greet you year round. It is home to 37 species of mammals and eight species of reptiles and amphibians.

Over 244 species of birds have been located on the Refuge over the years as well. Some of the more common species of birds that make their home inside the 4,650 acres of marsh, prairie and forest habitat include forest birds, prairie birds and waterfowl.

A visitor center with hands-on displays is open 8 a.m. to 5 p.m. Monday through Friday. The Refuge itself is open to the public during daylight hours. Popular activities at the Refuge include deer hunting, bird-watching and ice fishing in the winter.

Archery, muzzleloader and rifle tags are available throughout the state for hunters. Popular game fish include walleye, perch and northern pike.

A new boardwalk and observation deck were launched in May 2004. The boardwalk winds through woodland of bur oak, American elm and basswood. It takes visitors past high points of interest such as the restored prairie where native grasses and forbs are enjoyed.

The 110-foot observation tower gives the public a breathtaking bird's-eye view of the surrounding landscape. It also gives viewers a chance to appreciate the number of lakes the area holds.

The Refuge offers a recently expanded 1.5 mile interpreted hiking trail, scattered wetlands, an overlook trail and a recreation area as well.

There is no camping provided inside the Refuge, but there are some areas accessible nearby. Pickerel Lake State Recreation Area and other sites throughout the Day County area provide campgrounds for visitors. For more information, contact the Refuge at (605) 947-4521.

# JAMES VALLEY

TELECOMMUNICATIONS

**High Speed Internet  
Cell Phone  
Cable TV  
Home Phone**

**235 E 1st Ave, Groton 1-800-556-6525**



**jamesvalley.com**

## Home of the Bearcats

### Webster Area School District 18-5

102 E 9th Ave  
Webster, SD 57274  
Central administration 345-3548  
Fax 345-4421  
Elementary 345-4651  
High school 345-4653  
Web site: [webster.k12.sd.us](http://webster.k12.sd.us)

★ Get a stellar ★  
★ education at one ★  
★ of Day County's ★  
★ fine schools! ★

# Schools

## Home of the Dragons

### Waubay School District 18-3

202 W School Rd  
Waubay, SD 57273-2134  
Business office 947-4529  
Bus shed 947-4631  
Fax 947-4243  
Web site: [waubay.k12.sd.us](http://waubay.k12.sd.us)

# MIKE'S

345-3068 • Webster



Full Service Food  
Center with  
Deli and Bakery  
Eat-in  
or take out!



**STORE HOURS**  
Monday - Saturday  
7 a.m. to 9 p.m.  
Sunday  
8 a.m. to 6 p.m.



**FREE!**

**MIKE'S**  
Webster



**5-pound bag of ice  
with \$10  
purchase**

With Coupon

# Lily



The once plentiful American Bison used to roam the Great Plains at numbers of 30 million

Lily was the last town built on the Chicago, Milwaukee and St. Paul Railroad between Bristol and Madison. The railroad was built in 1887 and, in 1894, a flat grain house was built and a sidetrack was graded by the settlers. The railroad company was then obligated to build a sidetrack, which was completed in 1896. A switch shanty was used for a depot until 1900 when the depot was built.

The town was named by Ross E. Parks who was postmaster at the post office which was about a mile and a half from the town site. Parks named the town for his sister Lily.

Mail was brought to his place by horse and cart twice a week from Clark. The post office was later moved from his homestead to the Barber homestead and then to the Patterson homestead. It was eventually passed on to Emma Johnson and later moved to the store operated by J.T. Larson.

Franklin Barber built the first general store. The town hall was built in 1895. At one time there were six elevators in business.

Today only a handful of houses stand in Lily where a few residents still call home. The fourth Sunday every

June, the Buffalo Plains Historical Foundation helps the small town of Lily come to life. Buffalo Plains' annual church service, buffalo dinner fund raiser and meeting draws many from all over the nation who come to relive memories of the good ol' days in Lily.

## JOHNSON RENTAL STORAGE UNITS

520 E. 1st St.



Sizes  
7' x 10'  
8' x 10'  
10' x 24'

Ask about our ONE MONTH FREE DEAL!  
Dan Johnson owner call: 345-4149

Looking for a lake cabin or  
other property in the area?



510 South Main St.  
Webster, SD 57274  
(605) 345-4062

## Day County TV & Appliance

509 Main St., Webster

345-3393

*After the sale,  
it's the service that counts*



Washers  
Dryers  
Refrigerators  
Ranges

Microwaves  
Trash Compactors  
Air Conditioners  
Televisions

*Competitive Prices*

As many towns in South Dakota, Butler is a small town that used to be the center of activity. In 1887, Harrison Butler deeded 80 acres of his land to the Chicago, Milwaukee & St. Paul Railroad Company for a town site, asking only that the town be called Butler. The Butler Depot was built after the construction of the rail line from Lake Preston to Bristol, 1886-1887.

The year 1895 saw Butler take one giant step forward as that was the year it became incorporated as a town. The first business established in the new town was a store by George Bennett, who also had a store in Bristol. Butler's first postmaster was Will Hart.

Butler's Main Street in the early 1900s was a thriving avenue of business – the Butler Hotel,

# Butler

the Strandness Bank, the Stewart Cafe, the Potter Harness Shop, Lanagager's Butcher Shop, and the Butler General Store, just to name a few. Every week, the businessmen of Main Street sponsored a movie. A big screen was hung on the east end of the street, and, as soon as it was dark, a movie was shown. Families and friends would gather together to visit, see the movie and shop.

**Do it  
Best**

## WEBSTER LUMBER HOME CENTER

**PO Box 575, North Hwy. 25, Webster • Phone 345-4688 • Fax 345-4689**

**[www.websterhomecenter.com](http://www.websterhomecenter.com)**

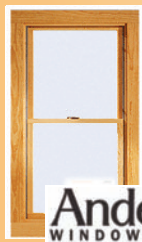
**Hours: Mon.-Fri. 7:30 a.m. - 5:30 p.m. • Saturday 7:30 a.m. - Noon**

**Lumber • Cabinetry • Flooring • Paint • Hardware  
Electrical • Plumbing • Rental • UPS Drop**

Let us help you create your custom home, barn or shop with floor plans and 3-D rendering.

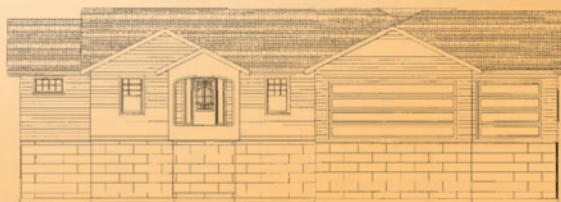
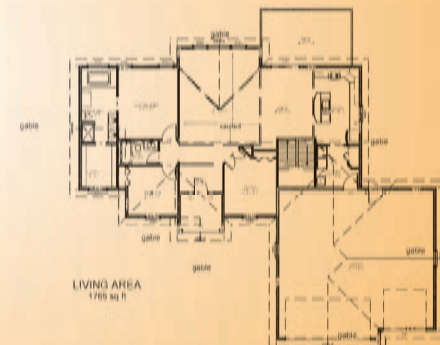
- Stocked with a full line of building materials
- Project estimating and home design available
- Contractor referrals and project coordination

**Anything To Build Everything!**



*Featuring quality  
Andersen® products*

**Andersen**  
WINDOWS • DOORS



***We are here to help you from start to finish and anywhere in between.***

# Museum of Wildlife, Science & Industry



This exhibit shows the variety of different mounts and animals displayed at the museum

Aside from the many lakes and outdoor attractions of the Glacial Lakes region, there are various museums, fairs and festivals that can be appreciated as well.

The Museum of Wildlife, Science & Industry is a non-profit organization which has preserved the culture and heritage of northeastern South Dakota. There is something for everyone in the family.

Visiting the museum can be a full day event. There are 24 buildings with varied exhibits, 12 of which are historic buildings moved to the site and restored to the proper time period.

A walking tour will take visitors through the Grenville Jail, Ortley Post Office, Fern's Fashion Shop and many more.

The shoe house holds the extensive shoe collection of Mildred Fiksdal O'Neill, Webster. The assortment is a product of 60 years of shoe collecting.

The museum also features over 80 restored antique tractors, a Case steam engine, a blacksmith shop, one of the first hydraulic barber chairs ever made, an international animal display and the Wallace Telephone Building.

New exhibits include a military section and the Sigurd Anderson building which houses memorabilia from Webster resident and South Dakota Governor

Sigurd Anderson.

Another exciting addition is the South Dakota State Fishing Museum which is a work in progress. Call (605) 345-4751 or go to <http://www.sdmuseum.org> for more information.



50 bed Skilled Nursing Care Facility  
Medicaid ~ Medicare Certified  
Physical and Rehabilitation Therapy



Bethesda Home  
&

Heritage Village Independent Living  
129 W. Hwy. 12 • Webster, SD

Phone (605) 345-3331 • Fax (605) 345-3325  
[www.bethesdanursinghome.com](http://www.bethesdanursinghome.com)

*Our Mission is a Christian Home of Health, Healing,  
Heart and Hope*

## DELANEY, NIELSEN & SANNES, P.C.

ATTORNEYS AT LAW

P.O. Box 615  
21 WEST 6TH AVE.  
WEBSTER, SD 57274  
605-345-3321

**Let us help match buyers  
with sellers!**

Residential • Commercial • Recreational  
Properties

**Delaney & Sannes**

– Real Estate Brokers –  
Kent Delaney & Tom Sannes  
(605) 345-3321 • [www.webstersd.com](http://www.webstersd.com)

Peter Holmquist and his family came to Day County from Sweden in 1882 and homesteaded about one mile from the current site of Holmquist.

Most of the area pioneers were engaged in farming at that time, and the marketing of their grain constituted a serious problem. Towns were far apart and the area lacked good, graded roads. There was a real need for more convenient shipping facilities and other services the railroad could provide.

In 1896, Peter Holmquist, then a representative in the State Legislature, secured from the Chicago, Milwaukee and St. Paul Railroad the right to "flag" passenger trains, so a "Flag Station" was established by the name of "Holmquist." About four years later, Mr. Holmquist, with the united efforts of other area farmers secured the promise of a sidetrack from the railroad company. Consequently, about 1900, Holmquist was officially born as a railroad station.

The Bagley Elevator was almost immediately erected in Holmquist, and Fred Merten was hired as manager. Old-timers remember Mr.

# Holmquist

Merten as the elevator man with the wooden leg, which in no way deterred him from doing a good day's work.

In 1903, Holmquist village was plotted in the northwest corner of a quarter owned by William Gast. Holmquist soon became a popular grain shipping point. The Spencer Grain Company built another elevator, and the McCall-Webster Elevator Company followed suit and built the third elevator and lumber business around 1905.

There was a lot of excitement in the village when the Holmquist Bank was robbed on two different occasions. It was reported that on one occasion the robbers spent the night in a nearby schoolhouse and then asked for breakfast at a farmhouse southwest of Holmquist the following day.

## Your Hometown Health Care Team!

See us for treatment of :

Diabetes	Allergies	Incision, drainage and
High blood pressure	Skin biopsy	removal of cysts
High cholesterol	Cryosurgery:	Wart removal
Colds	<i>precancerous lesions,</i>	Skin tag removal
Influenza	<i>warts and other lesions</i>	Laceration repair
Sore throats	Ingrown nail removal	Sclerotherapy
Ear infections	Joint and soft tissue	
Bronchitis	injections	
Mononucleosis	Trigger point injections	
Urinary tract infections	Acne Cyst removal	

Monday - Thursday  
8 a.m. - 5 p.m.  
Closed over lunch



Brian Chabot, PA-C



Briana Aadland, RN

**Avera**   
**Medical Group**  
Webster

(605) 345-2222 | 401 East HWY 12 Webster, S.D. | [www.AveraStLukes.org](http://www.AveraStLukes.org)

# Pumpkin Fest



Looking for a fun and unique experience?  
Head to Webster for their annual Pumpkin Fest

**Beer • Wine • Spirits**

**Webster  
Municipal Liquor**

Open Monday-Saturday 8 a.m. to 11 p.m.

Hwy. 12 • Webster

**345-4800**

**Complete Sales—Service—Parts**

Your John Deere Headquarters

New and Used Equipment

901 West Highway 12, Webster

1-800-658-2252 or 605-345-3391



When Webster paints the town orange and flying pumpkins soar through the air, it's a day you won't want to miss.

The annual Pumpkin Festival and night parade held every second weekend in October is a day packed full of activities for the whole family. Young and old take part in this weekend of non-stop fun.

The event features Main Street entertainment, pumpkin Olympics for the kids, artistic pumpkin decorating contests, bingo, a 5K run and fun walk, a baking contest, pie eating contests, horse-drawn hayrides and, of course, the state's largest pumpkins!

The pumpkins are weighed, and winners are announced at the festival. Winning pumpkins have weighed over 1,000 pounds with the 2010 pumpkin weighing 1,055 pounds; the year before the winner was 1,017 pounds.

Other entertainment includes Webster's Autumn Parade of Lights. The Cruisin' Classics Car Show and pumpkin catapulting have also been successful at previous festivals.

Add good food to the long list of activities and you've got yourself a spectacular weekend.

For more information about the Pumpkin Festival, contact the Webster Area Chamber of Commerce, (605) 345-4668.

**Northland Auto Center**

Webster, SD

345-NAPA (6272) Toll Free 877-473-5870

**Your complete parts, service and  
vehicle center under one roof**

**NAPA PARTS CENTER**

- Full line of NAPA parts and accessories
- Batteries including deep cycle

**NAPA COLLISION CENTER**

- Full auto body repair shop
- Windshield replacement

**RENTAL VEHICLES**

- Passenger cars and vans
- Great rates!

**VEHICLE SALES**

- Great selection of quality, pre-owned vehicles
- Online at...

**northlandautocenter.com**

**NAPA SERVICE CENTER**

- ASE certified technicians
- Complete service department
- We also do trailer work and wheel packs



# Churches

## American Lutheran Church

121 W 7th Ave  
Webster, SD 57274  
345-3714

## Bethany Baptist Mission

Enemy Swim, SD 57273

## Bethesda Lutheran Church

314 3rd St S  
Bristol, SD 57219  
492-3123

## Bethlehem Lutheran Church

Pierpont, SD

## Bergen Lutheran Church

Bristol, SD 57219

## Butler Lutheran Church

Butler, SD

## Christ the King Catholic Church

1101 E 1st St  
Webster, SD 57274  
345-3447

## Egeland Lutheran Church

Waubay, SD 57273

## First Baptist Church

1309 W 7th St  
Webster, SD 57274  
345-4450

## Freedom Worship Center

605-725-0777

## Fron Lutheran Church

PO Box 128  
Roslyn, SD 57261  
486-4241

## Immaculate Conception Catholic Church

PO Box 77  
Waubay, SD 57273  
947-4540

## Pierpont Community Church

Pierpont, SD 57468

## Rose Hill Evangelical Free

Langford, SD 57454

## Roslyn Lutheran Church

721 Main St  
Roslyn, SD 57261  
486-4411

## Sacred Heart Catholic Church

Eden, SD 57232  
486-4692

## St. Anthony's Catholic Church

306 Main St S  
Bristol, SD 57219  
492-3135

## St. John's Lutheran Church

820 Main St  
Webster, SD 57274  
345-3415

## St. Joseph's Catholic Church

22 Saint Joseph St  
Grenville, SD 57468  
486-4655

## St. Mary's Episcopal Church

Webster, SD 57274

## Skudesnes Lutheran Church

Pierpont, SD 57468

## Tabor Lutheran Church

345-3073

## United Methodist Church

105 E 9th Ave  
Webster, SD 57274  
345-3747

## Waubay Lutheran Parish

26 E 4th Ave  
Waubay, SD 57273  
947-4580

## Westside Wesleyan Church

30 2nd Ave E  
Bristol, SD 57219  
492-3635

## Zion Evangelical Lutheran Church

224 W 5th Ave  
Waubay, SD 57273  
947-4535

## Zion Lutheran Church

301 S Pew St  
Andover, SD 57422  
298-5610

Video Lottery • Pool  
Games • Large Screen TVs

Check out our  
daily specials



Webster  
American Legion

614 Main St., Webster • 345-3416

**Northside Implement**

Hwy. 25 • Webster • 345-4799



**We repair**  
**Boat trailers and ice shacks**

# County & State Government

## Day County Courthouse

711 W First St.  
Webster, SD 57274

## Auditor's Office

345-9500

## Circuit Court Clerk

345-3771

## Community Service Office

345-9501

## Department of Transportation

345-3232

## Director of Assessments

345-9502

## Economic Development

345-3159

## Emergency and Disaster Service

345-3222

## Extension Office

345-9504

## Fairgrounds

345-3487

## Game, Fish & Parks - District Office

345-3381

## Highway Supt. & Shop (Fairgrounds)

345-4658

## Landfill

345-4839

## Nurse

345-3882

## Register of Deeds

345-9506

## Sheriff

345-3222

## Social Services

345-3432

## South Dakota Career Center

345-4781

## State's Attorney

345-4624

## Treasurer's Office

345-9510

## Veterans' Service Office

345-9512

## Day County Conservation District Farm Service Agency

345-4661

## Waubay Wildlife Refuge

947-4521

## State Highway Shop

345-3232



*The place where fresh is the taste*

Located In Mike's Mini Mall, Webster

**(605) 345-4780**

Monday - Saturday 8 a.m. - 10 p.m.  
Sunday 9 a.m. - 10 p.m.



**Going Green**  
MAINTAINING AN ENVIRONMENTALLY FRIENDLY HOME

It's much more than speedy delivery. It's making our business more environmentally friendly. Get your paper the same day it is on the newsstands, without leaving your home.

Go to  
[reporterandfarmer.com](http://reporterandfarmer.com)  
click on the online edition button  
check out our changes to the FREE edition

## City of Andover

Fire  
298-5299  
Meeting room  
207 S Main St  
298-5668

## City Info

## City of Bristol

City hall  
204 1st Ave E  
492-3225  
Bristol Community Center  
492-3655  
Fire department  
492-3131  
Pool  
492-3245  
Web site: <http://www.bristolsd.com>

To set up phone, internet and cable contact:  
ITC 1-800-417-8667  
Midcontinent 1-800-888-1300

To set up electric contact:  
Otter Tail Power Co. 1-800-257-4044  
To set up water contact:  
City hall  
To set up garbage contact:  
Lake Region Sanitation 947-4872

## City of Butler

Fire department  
492-3131  
City clerk  
492-3452

## City of Webster

Airport  
345-9982  
City hall  
800 Main St  
345-3241  
Hours 8 a.m. to 5 p.m.  
Fire department  
345-3030  
Housing authority  
345-3181  
Library  
345-3263  
Police department  
345-4040  
Street department  
345-3935  
Pool  
345-3924  
Treasurer's office  
345-9510  
Water department  
345-4032  
Webster armory  
345-9990  
Youth center  
345-4175  
Web site: [webstersd.com](http://webstersd.com)

## City of Greenville

Finance office  
486-4540

## City of Pierpont

Community building  
325-9482  
Fire department  
325-3370

## City of Roslyn

City hall  
486-4611  
Fire department  
486-4121  
Water department  
486-4611

## City of Waubay

City hall  
45 N Main St  
947-4261  
City shop  
947-4371  
Finance office  
947-4261  
Fire department  
911 or 947-4100  
Library  
947-4748  
Police department  
911 or 947-4299  
Youth center  
947-3425  
Web site: [waubaysd.com](http://waubaysd.com)

To set up phone contact:  
ITC 1-800-417-8667 or  
Midcontinent 1-800-888-1300  
To set up cable contact:  
ITC 1-800-417-8667 or  
Midcontinent 1-800-888-1300  
To set up electric contact:  
NorthWestern Energy 1-800-245-6977  
To set up water contact:  
City hall  
To set up garbage contact:  
Dependable Sanitation 1-605-225-9316

# Roslyn



The Vinegar Man Lawrence Diggs shows museum visitors various types of vinegars

The town of Roslyn which is situated in the north-eastern part of Day County, 11 miles west of Pickerel Lake and 12 miles south of historic Fort Sisseton, traces its history from 1882 when Henry H. Russell took a homestead on the Old Fort road in Section 10, Raritan Township.

Soon after Mr. Russell established his home there, he was appointed as Roslyn's postmaster. This was the first post office between Webster and Fort Sisseton.

Some say that Russell named it Roslyn after a town in his native Scotland. Others say Roslyn was named from a combination of the names for two nearby lakes, Rosholt and Lynn.

Although the post office bearing the name was opened in 1883, the town was not platted until 1914.

One historical Roslyn building, the Roslyn Creamery, still stands today. The 4,800-square-foot brick creamery, which opened in 1926, was a farmer cooperative-owned business, famous for its Roslyn Pride butter.

In the early 1970s, the creamery stopped producing butter and converted to a bulk milk depot, complete with large stainless steel tanks.

But in 1994, the business had to shut down for good. All the equipment, stainless steel tanks included, was sold at auction. Everything, that is, except the huge redwood butter churn that was simply too large to move. To this day, it keeps guard against the north wall of the building.

Today this charming building is used as a music hall. The first Saturday of every month local musicians get together to entertain those in the audience. The public is welcome to attend and, if they desire, step up on the stage and perform.

Roslyn is also home of the International Vinegar Museum. If you visit there, you will have the opportunity to see vinegars from all over the world, taste vinegars made from all kinds of plants, see paper made from vinegar and learn how vinegar is made in factories, villages and homes all over the world. Discover all kinds of things you never knew to ask about vinegar.

The International Vinegar Festival is held every year and features cooking demonstrations, games, entertainment, vinegar tasting, a parade, museum tours, fun treats and prizes.

## CAR TRUCK TRACTOR Webster Tire, Inc.

521 East 1st Street  
Webster, SD 57274

Phone 605-345-3950

After Hours: 345-4713  
or 448-8221



## Webster Theatre

704 Main St. • 345-4027

7:30 p.m. Shows  
Friday - Monday

Grenville is proud of its Polish history, and it is one of the oldest white settlements in Day County. In June of 1877, Paul Kurkowski, Mathew Reszcznski, Mr. Kujawa and Mr. Hetka came from Appleton, MN to evaluate the area. On their first night in the area, they camped at East Enemy Swim Lake with 20 Native Americans. They had a friendly meal with them and passed the peace pipe around three times.

It was not until two years later in the fall of 1879 that pioneers came and took up homesteads. Kurkowski and Reszcznski returned with Joseph Gruba, Joseph Helwig and Stainlaus Helwig.


The winters were unusually severe in those years; their little homes were often covered entirely with snow. At times, they had to build tunnels in order to get to their barns. Joseph Gruba tried hard to induce other hardy men to settle in Dakota. Then, in 1880, the Chicago, Milwaukee and St. Paul Railroad built a line from Ortonville to Aberdeen, and the settlement increased. In March of 1882, families from Chicago, IL, arrived, followed by bands of pioneers in 1883 and 1885.

# Grenville

In 1890, Frank Dolney built a general store, and a blacksmith shop was started by Frank Parzhowski. Mike Mienlinski built the first shanty to live in. Tradition says Joseph Gruba named it Grenville because of the country's somewhat hilly land, with green grass abounding on the hillsides. The name was deemed very appropriate.

The town was platted in 1914 and incorporated as a town in 1918. A step forward was made in Grenville in 1921 when Joseph Block started operating the dynamo electric plant. Electricity was promptly installed in the parish buildings.

The community has been devastated by fires throughout the years, but Grenville citizens have always come together and rebuilt.




**Jct. of Hwys. 12 & 25, Webster**  
**Bait • Ammo • Tackle • License • Guns**  
**3 Lodging Facilities • Hunting Supplies**

Rentals

- Boat Rentals
- Ice Houses

Call us for automated fishing report  
**Doug Johnson, owner**  
**Cove phone:**  
**(605) 345-2468**  
**website: thesportsmanscove.net**  
**e-mail: sportsmanscove@live.com**



1 4 , 4

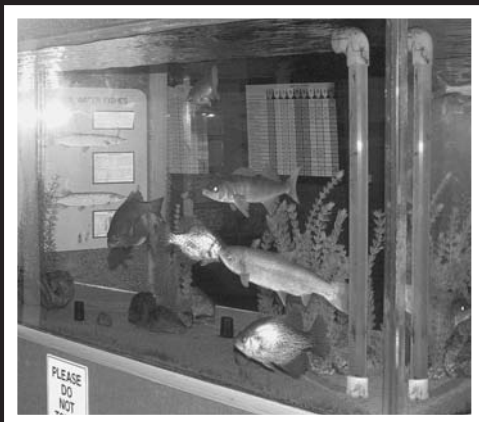
44 ,

0 , ,

**345-4755**

&

# Blue Dog State Fish Hatchery



This tank at the Blue Dog Lake State Fish Hatchery displays several types of fish the hatchery raises

Blue Dog Lake's State Fish Hatchery is South Dakota's only facility for producing both cool and warm water fish. As the largest fish hatchery in the state, it covers 53 acres of water and produces 70 million fish a year.

Located on the northwest side of the lake, the hatchery has been provided with abundant high quality ground and lake water ever since its completion in 1982. This has enabled 14 species of fish to be raised at the site.

Fish raised at Blue Dog include northern pike, walleye, yellow perch, largemouth and smallmouth bass, bluegill and crappie. Cold water species such as trout and Chinook salmon are raised in winter.

There are 700 incubation jars for northern pike and walleye eggs inside the hatchery. Also housed are 20 incubators for trout and salmon eggs and 30 rearing tanks. Outside there are eight raceways and 38 rearing ponds.

The hatchery also offers a visitor center and aquarium, informative displays and two hiking trails for tourists. One trail provides a view of the outside raceways and rearing ponds, while the other stretches around the beautiful lakeshore and through a marsh ecosystem.

A slide presentation is also available to visitors to guide them through the fish rearing process.

The hatchery is open year round to visitors Monday through Friday from 8:30 a.m. to 4 p.m. Groups interested in learning more about the hatchery or tours can contact them at (605) 947-4657.

## WEBSTER VETERINARY CLINIC

1400 E 7th Street • Webster, SD 57274  
(605) 345-4817

Hours: Monday-Friday 8 a.m. - 5 p.m.  
Saturday 8 a.m. - Noon



Dr. Jessi Warrington  
Dr. Stephanie Bown



## DORSETT CHIROPRACTIC CENTER

*"Personalized treatment,  
tailored to fit you and your  
unique healthcare needs"*

**Dr. Morgan C. Dorsett**  
*Chiropractor*

511 Main St.  
Webster, SD 57274  
Phone: 605-345-6222  
Fax: 605-345-6224

## Bob and Darlene Dosch Teleflora Flower Cart

501 Main St. • Webster, SD 57274  
1-800-794-7398 • 1-605-345-3212

*Fresh Flowers • Green Plants*

*• Garden & Yard Ornaments*

*• And MORE!*



Early in 1880 the railroad reached Station 50, and the crew founded the town which was first known as Blue Lake. A post office bearing this name opened on Oct. 3, 1881.

On Sept. 25, 1885, the name of the Blue Lake post office was changed to Waubay. This action created great confusion since Day County's first post office, spelled "Wahbay," opened Nov. 3, 1879. This post office was located six miles northwest of Waubay. The railroad insisted on naming the town Waubay. So from 1881 until the close of the Wahbay post office in 1885, there was great confusion concerning mail.

Waubay's site was platted on Nov. 18, 1880 incorporated as a village in 1893 and became a city in 1920, making Waubay the oldest city in Day County.

Like many of the nearby lakes, Waubay bears the Sioux Indian name meaning "where the wild fowl build their nests."

The first dwelling was built by Homer

# Waubay

Fritts and the first store was built by Ralph Chapman.

Waubay has activities year round. Summer Fun Days occur around the fourth of July followed by Frontier Days in August and the Band Festival in September.

Funfest is a fund raiser for the Waubay City Library. The day is a great way to spend time with family along with helping the library raise money. This event usually includes a kid-powered parade, climbing wall, games for kids, country bingo, anything-goes sale, a mock "price is right," concessions and ends with fireworks.

## Blossom Shoppe & Gifts

609 Main St., Webster, SD  
**605-345-4405**

**Fresh Flowers**  
**Green Plants • Balloons**  
**Stuffed Animals • More**

**Wire service available**



*Welcome to Webster!*



## Southside Campground

3/8 mile south of Webster on Hwy. 25  
Campers, motorhomes welcome by the day, week or month  
Camper Rental Available 30-50 Amp Service  
**Ask for Lynn at 345-4405 or cell 880-7442**

- Self contained RV units ONLY
  - Picnic tables
  - Shaded
- Electricity, water & sewer
- Central to Day County fishing area

Webster, SD



## Museum of Wildlife, Science & Industry

West Hwy. 12, Webster  
Includes 23 buildings and artifacts from NESD.

*Come see our history!*

**Hours:**  
May 15 - Oct. 15  
Mon.-Sat.  
10 a.m. - 5 p.m.  
Sunday 1 - 5 p.m.

The museum includes  
80+ tractors and  
their equipment and  
100+ animal mounts.

*Something for everyone.*

**(605) 345-4751 • www.sdmuseum.org**



- Plumbing
- Heating
- Air Conditioning

**Formerly Wayne's Heating & Air Conditioning**

**605-345-4235**

115 East 5th Avenue  
Webster, SD



*Your Local Rheem Dealer*

# Webster

Webster was named after James Perry Webster, who came to Day County from Ohio by way of Minnesota in June of 1880. At that time, Webster and his family were the only settlers in the county west of the Wahbay settlement. The Chicago, Milwaukee & St. Paul Railroad Company located their road and commenced grading in the vicinity of Webster later in June, and the first train arrived on Oct. 27, 1880.

During this fall, E.R. Ruggles and B.D. Fish came to the area but did not make a permanent settlement until the following spring. Winter 1880-1881 is noted throughout the entire West as one of unusual length and severity, and this little settlement was consequently cut off from communication with the outer world until May 15, 1881. The blockade was then raised and the train reached Webster. The following persons soon after came in and took up claims in the vicinity: E. Knapp, E. Babcock, Charles Wright, E.A. Smail, J.C. Bush, John Norton, E. Balzer and L.J. Ochseneiter.

The town was platted in June 1881. E. Smail was the first person to decide on building which is now part of Fiskdal's Furniture building. Upon its completion, in connection with John Norton, he commenced a general merchandising business. In 1882, several business houses were erected. The old part of the Balzer House (Klein Hotel corner) was finished immediately after Norton and Smail finished their storeroom. Smail was mayor of Webster for 10 years being elected to five successive terms. It was during his administration that the city made great advancements as light, water and sewer systems were installed.

In 1883, there was an activity in building operations that produced splendid results. Residences, public buildings and business houses of all kinds were erected. The improvements amounted to the considerable sum of \$27,000! Among these improvements were the Congregational Church building, the high school building, and the courthouse.

Webster was the supply point for Fort Sisseton and Britton. A daily stage ran to these two points, a triweekly to Watertown, and a weekly to Lake Lynn and Wahbay Lake.

The pioneer paper of the county, the Reporter & Farmer, made its first appearance Sept. 7, 1881, the publisher being A.C. Tuttle. The Day County Bank was opened in the fall of 1883 by J. Alley. The estimated population of the town was about 500.

Webster was incorporated as a village in March 1885 and as a city in April 1895. Today, Webster is the largest city in Day County and the county seat.



The city of Webster has grown and changed a lot over the last 125 years. The top photo of Webster was taken in 1885. The bottom photo is a shot of Webster in 2010. Looking north, one can easily notice the differences between the two.

If you are looking for an interesting and educational way to spend your time, visit the Day County Museum located in the basement of the Day County Courthouse.

The hundreds of articles on display afford visitors the opportunity to step back in time and enjoy a glimpse of the past. Much of the history of Day County is preserved through the loans or donations by people whose forefathers wore, used or treasured the items.

Of interest to the ladies may be the gown worn by Mrs. Sigurd Anderson at the Governor's Inaugural Ball and Reception in January 1951.

The excellent collection of early day guns might catch the men's eyes.

There are many items of Native American significance including a bow and arrow, spears, arrowheads and three beautiful beaded war clubs made by Sioux Indians.

Another item is an Indian headdress presented to Governor Anderson by the Sioux Indian Tribe when the Sitting Bull monument was dedicated.

There are many pictures of early day Webster, a sailing chart used in sailing the seven seas in 1879 and a sled made in the 1880s.

Among the farm equipment used by early day settlers is a horse net, cow and sheep bells, single and double oxen yokes, an iron hoe and a hand corn planter.

One unusual piece is a hair wreath made in 1865 from human hair that was either crocheted, knitted or wound around cardboard to make flower petals.

One item you'll have to see to believe is the tiny pair of Oriental shoes worn by grown women.

The Day County Museum is open Wednesday and Friday from 1-4 p.m., March 1 through Oct. 31 or by appointment call (605) 345-3765.

## Day County Museum



There is nothing like an old fashioned cream separator to remind you of the good ol' days

### Fiksdal Furniture & Gifts

345-3312 • 621 Main • Webster

Open Mon.-Fri. 9 a.m.-5:30 p.m. • Sat. 9 a.m.-4 p.m. or by appointment



- Unique Women's Clothing
- Hats, Purses, Sandals
- Candles, Diffusers
- Jewelry • Photo Kiosk
- Furniture • Mattresses
- Unique Kitchen Items

We're your complete home furnishing store!

 Like us on Facebook!

## FIKSDAL —FUNERAL SERVICE—

SERVING YOUR FAMILY SINCE 1924

David L. Ninke

&

Shauna Kjos-Miotke, Directors

(605) 345-3122

[www.fiksdalfuneral.com](http://www.fiksdalfuneral.com)



24 Hour Pumps  
Bulk fuel delivery

Beer & Liquor • ATM • Casino  
Bait • Hunting & Fishing Supplies  
Full Line of Hardware

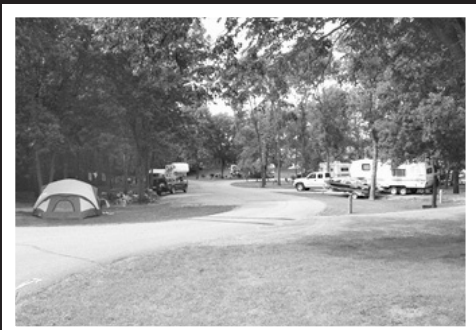
Your

"One Stop Shopping"  
Experience

At the corner of Hwy. 12 and Waubay  
Sportsmen's Paradise

Open 6 a.m. - 11 p.m. daily  
(605) 947-4849 [hr1stop@galaxyh.net](mailto:hr1stop@galaxyh.net)

# Pickerel Lake State Rec Area



**Pickerel Lake's State Recreation Area is a great Place to camp, fish, hike and swim**

Pickerel Lake State Recreation Area is situated in the heart of the Glacial Lakes region on the northeast side of Day County. It's a wonderful place for the all-season camper.

This site offers 76 campsites and 69 electric hookups between two campgrounds. There are also two handicap accessible camping cabins with large front porches to enjoy nature and serenity. The tent area features four non-electrical sites. The west and east campgrounds are located on opposite sides of Pickerel Lake, but they are within driving distance allowing guests to take advantage of what each has to offer.

There are comfort stations with showers, dump stations, a playground and a fishing dock available as well.

Campers come to Pickerel to enjoy fishing, hiking, picnicking and swimming in a beautiful surrounding. Hiking trails are located at both camp areas to introduce visitors to the park's many plants and animals. There are a basketball court, horseshoe pits and areas to grill out for group recreation.

The east unit campground has 17 new campsites, 14 with electricity and three without. A new playground and fish cleaning station accompanies this site.

The five camping cabins on the west side include beds and a table. Guests need to bring their own bedding and toiletries. Each cabin sleeps four people.

The state recreation area is open year round; gates are open from 6 a.m. to 11 p.m. May 1 through Sept. 30. The gates are open 6 a.m. to 9 p.m. Oct. 1 through April 30. An entrance fee is required year round.

Walking tours are given periodically throughout the year, and Family Fun Days are held each summer, usually sometime in June.

Contact Pickerel Lake State Recreation Area at (605) 486-4753 or visit [www.state.sd.us/gfp](http://www.state.sd.us/gfp) and click on state parks for more information.

# LIFE IS GOOD!

## ◆ 73,000<sup>+</sup> FREE ATMs

## ◆ FREE CHECKING

### HMM...

***Come in. Call. Click.***



### DACOTAH BANK

*Here for you.<sup>SM</sup>*

BANKING • INSURANCE • MORTGAGE • TRUST  
Webster • 600 Main Street • (605) 345-3306  
Roslyn • 506 Main Street • (605) 486-4516  
**[dacotahbank.com](http://dacotahbank.com)**

Insurance and Trust not FDIC Insured. FDIC

## Blue Dog Lake

Blue Dog Lake was named after a Native American who settled at the east side of the lake. He was called Sun-Ka-to-Kienum which interpreted means – “the dog that paints himself blue.”

## Enemy Swim Lake

Before white men settled in the area, the Sisseton and Chippewas were rivals. One night, a band of Sissetons ate and danced at their camp on a point of land that almost reached an island in the lake. A war party of Chippewas planned a surprise attack on the village after the powwow ended and all were asleep. While they waited, they made rafts in the woods across the bay from the island.

The tom-toms were still beating loudly in the Sioux camp when the Chippewas drifted to the island on the rafts, waded across a sandbar to the point of land and then hid in the bushes.

An old Sisseton woman out gathering wood for the fire came upon a brave in strange war paint. She screamed, and he hit her with his tomahawk. The other wood gatherers ran to

# Local Lake Legends

the camp crying, “Enemies, enemies!”

The Sisseton chief sent older men across the bay to wait in the woods on horses. The young warriors were ordered to chase the Chippewas to the island. Outnumbered, the Chippewas fled to the island where many were scalped. The rest started to swim across the bay. As they reached shore, they were trampled, drowned or tomahawked by the older Sissetons.

The Sissetons sang and danced all night saying, “Swimming enemy, swimming enemy.” To this day, the lake is called Enemy Swim Lake.

## Kettle Lakes

Near Fort Sisseton are what are known as the Kettle Lakes – Cega-iapi – the French interpretation of Sounding Kettle and the American – Talking Kettle. It seems that the Indians at one time found an iron kettle which gave forth a ringing sound and caused them to name the lakes accordingly. Minnewasta or “Good Water Lake” as its name denotes – is a beautiful sheet of water, with a gravelly bottom and high banks.

## Pickerel Lake

Noted for its cool, spring-fed water, Pickerel Lake is one of the deepest natural lakes in the state. The 955-acre lake bears an American Indian name meaning “where you spear long fish.” Excursion boats were common on this lake until the early 1900s. A fish hatchery was built in 1929 and abandoned in 1979, when a new facility was built at Blue Dog Lake.

## Waubay Lake

“A nesting place for birds” is the literal translation of the Sioux word “Waubay.” There couldn’t be a better name for this lake as it is home to 245 species of birds.

Low water level periods draw thousands of diving ducks to the sago pondweed beds. On the other hand, flooded timber makes ideal habitat for nesting wood ducks.



**Dakota**  
**PROPERTIES**  
REAL ESTATE OF WEBSTER

**Find Local Listings**  
**DakotaProperties.com**  
**Call for land and lake property inquiries.**

- Residential
- Rural
- Commercial
- Land
- Lake Property

**DakotaProperties.com**

13967 Hwy. 25  
Webster, SD 57274  
Chris Vander Linden: Broker  
chris@dakotaproperties.com  
C: 605-380-8240 P: 605-345-3991

Participating with



**Cabela's TROPHY PROPERTIES**  
www.CabelasTrophyProperties.com



Located at intersection  
of Hwys. 12 & 25

## Boomer's Outback

Hotel & Campground  
[www.boomersoutback.com](http://www.boomersoutback.com)

345-3107

1-877-748-6009

Next to Pereboom's Cafe



### FOUR GREAT ACCOMMODATION OPTIONS!

#### 1 Outback Lodge

- Newly rebuilt in 2009 • 4 bathrooms
- Smoke free two-level house with loft
  - Rent one level OR entire house
  - Sleeps 5-15 individuals
  - Fully furnished kitchen
  - Private deck with grill
- Flat screen TVs with HD • Wi-Fi

#### 2 Two Hotel Units

- Reasonable rates • Mini-fridge
- Large double rooms • Smoke free

#### 3 Campground

- 8 full service shaded campground pads
- 30-50 amp available

#### 4 2 Cabins

- Sleeps 5 • Kitchenettes

Enclosed game cleaning area  
with dog kennels

All Outback Guests get  
10% Off in Cafe & Casino

*"For the Best in Home Cooked Food"*

### Daily Specials

Bakery Fresh Rolls

Soup & Salad Bar

Soft Serve Ice Cream

Catering Available

Homemade Desserts

Private Dining for All Occasions

**OPEN 6 A.M. TO 9 P.M. DAILY**

Junction of Hwys 12 & 25 • Webster

(605) 345-9986

[www.boomersoutback.com](http://www.boomersoutback.com)



Family Owned and  
Operated Since 1976

**GOOD COFFEE ★ GOOD FRIENDS ★ GOOD FOOD!**

## Personal

Child care/school/university  
Clubs and associations  
Dental  
Family/friends  
Medical  
Pharmacy  
Veterinarian

## Finance

Banks (accounts, credit cards)  
Department stores  
Insurance (contents, buildings, motor vehicle,  
health, life and special items)

## Utilities

Electricity  
Gas  
Sewer  
Telephone (land line and cellular)  
Trash  
Water

## Government

Driver's licence  
IRS  
Local government

*Don't forget  
to contact...*

Medicare  
Motor vehicle registration  
Office of State Revenue  
Post Office  
SSI (Supplemental Security Income)  
Voter registration

## Work related

Accountant  
Employer (past and present)  
Tax preparer

## Other

Church  
Library  
Newspaper/subscriptions  
Travel passes  
Vehicle breakdown service



**We are your local  
service provider!**

**Phone - Internet - TV**

14 E. 7th Avenue, Webster - Phone: 345-4260

# Vogl's Carpet

*We carry the full line of  
Hunter Douglas Shading*



We have all the latest styles of carpet. From Mohawk's Smart-Strand to Shaw's Stainmaster we've got you covered!

517 Main St., Webster  
345-4919



We carry a wide selection of tile for your floors, backsplashes, fireplaces, bathrooms and more. Tile that is used on one wall in the home, makes for a beautiful accent wall. Stop in and talk to Andrea about designing the right use for tile or stone in your home!

*Glass Tile, Stainless Steel Tile, Porcelain and Ceramic Tile, Slate, Travertine, Stone, Marble and Granite.*



Roller • Screen • Silhouette  
Wood Blinds • Honey Comb



*We also carry  
hardwood by  
Anderson*

***We offer Design  
Services – call Andrea***

***Call us today for your  
FREE estimate!***

## VOGL'S WOODWORKING

14097 436TH AVE., WEBSTER, SD 57274  
605-345-2408

***Custom Design - Custom Build - Custom Install***



Cabinetry that you will  
be proud to own.

Dan Vogl owner/operator  
since 1993.

Located one mile east of  
Webster on Hwy. 12

***We also design and build custom  
closet organizing systems.***

## Internal Revenue Service

Federal tax information and notice inquiries  
1-800-829-1040

Federal tax forms and publication orders  
1-800-829-3676

Problems resolutions office  
1-800-829-1040

Recorded federal tax and refund information  
1-800-829-4477

Assistance for the hearing impaired-TDD only  
1-800-829-4059

Local office  
115 Fourth Ave SE  
Aberdeen, SD 57401  
1-605-226-7273

# Tax Info

## Real Estate Taxes

All property taxes on real estate are paid to the Day County Treasurer's Office in Webster. Taxes on real estate are due the first of the year; however, residents have the option of paying half their taxes by April 30 and the other half by Oct. 31. Residents are issued a notice on their tax bill regarding this policy.

## Mobile Home Taxes

All property taxes on mobile homes are paid to the Day County Treasurer's Office in Webster. Taxes on mobile homes are due the first of the year; however, residents have the option of paying half their taxes by April 30 and the other half by Oct. 31. Residents are issued a notice on their tax bill regarding this policy.

## G. Todd Garry Public Accountant

- Farm and Ranch Bookkeeping
- Tax Planning and Preparation
- 29 Years of Tax Preparation Experience
- Electronic Filing

**513 Main St.,  
Webster, SD 57274  
345-3639**

## WEBSTER'S DAKOTA DINER

*Howard & Cindy  
Webster*  
Owners & Operators

### BREAKFAST SERVED ALL DAY

FEATURING HOMEMADE BISCUITS & GRAVY  
DIFFERENT DAILY SPECIALS • HOMEMADE SOUPS  
HOMEMADE PIES & BARS • CAKES & DONUTS

### OPEN 7 DAYS A WEEK

508 MAIN, WEBSTER • 345-4710

MONDAY-FRIDAY 6 A.M.-7:30 P.M.

SATURDAY 6 A.M. - 2 P.M. SUNDAY 7 A.M. - 2 P.M.



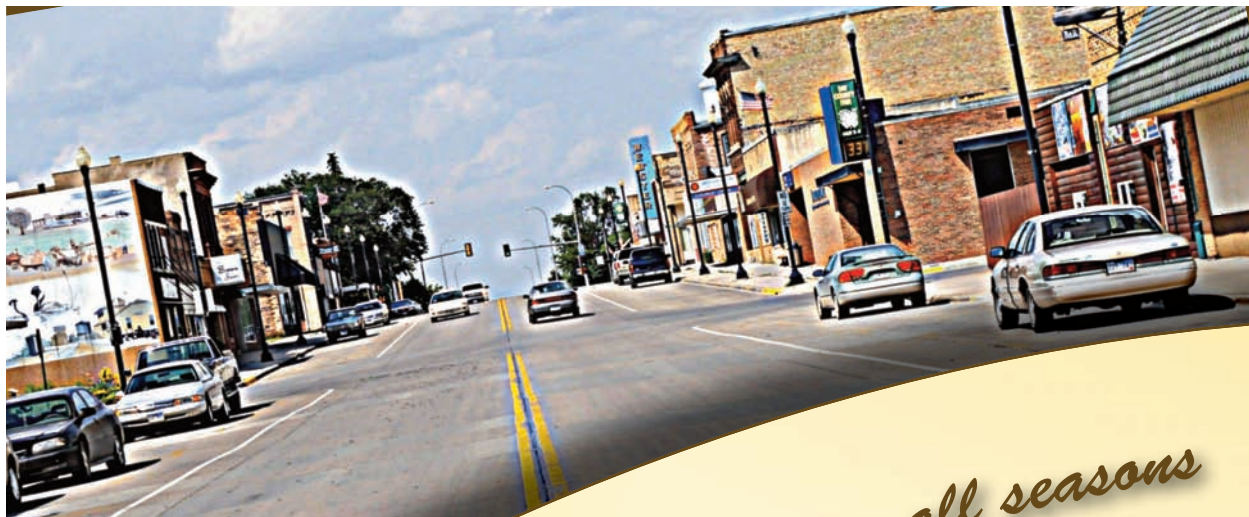
*Serving rural  
America  
since 1946  
Webster*

Day • Roberts • Marshall  
Counties

**345-3379**

**800-657-5869**

See us for all your rural electric needs



*Webster... A place for all seasons*



### *Upcoming Events*

#### **2013 planned events**

**Jan. 18-19** - 32nd Farm, Home & Sport Show

**May 4** - Spring Fling & Citywide  
Rummage Sales

**June 7-9** - Fort Sisseton Festival

**June 28-30** - Webster High Alumni Reunion

**Aug. 1-4** - Day County Fair

**Aug. 3** - Back-to-School  
Citywide Rummage Sales

**Oct. 11-12** - Pumpkin Fest/Night Parade

**Dec.** - Retail Christmas Promotion

**Call the chamber for more details**

**345-4668**

Webster is located in the heart of the glacial lakes area in northeast South Dakota at the junction of Highways 12 & 25 or just 30 minutes west on Highway 12 off the I-29 Summit exit.

Modern medical services  
facility and hospital

Laundromat • Restaurants • Bait shops  
Outdoor Aquatic Center • Soccer Fields  
City Parks • Baseball & Softball Complex  
Nine hole golf course • 24 hour law enforcement  
Excellent fishing and hunting • Lighted airport  
Shopping opportunities • Fish cleaning station  
Bowling alley • Two museums • Movie theatre  
Grocery store • Bed & Breakfasts • Churches  
Three motels • Excellent school system  
Antique shops • Free and paid campgrounds

This frontier fort was built in 1864 in response to a Sioux uprising. Its mission was to aid in settling Dakota Territory. Military personnel and Indian scouts managed the fort for 25 years before it was closed in 1889.

In 1959, the fort became a picturesque state park. The original officers quarters, powder magazine, stone barracks and a few other buildings were all that remained. Reconstruction on the site didn't begin until South Dakota's centennial in 1989. They have been in the process of building the grounds back the way they were when the fort was occupied ever since.

Visitors to the area can enjoy a visitor center with interpretive displays and guided walking tours by fort "soldiers" and others in costume.

There is also a 15-site campground, a boat ramp, picnic areas, comfort stations and shelter with kitchen. Fort Sisseton and the visitor center are open daily from Memorial Day weekend through Labor Day; the park is open year round. There is a state park entrance fee.

Visitors are also welcome to come see the Fort Sisseton Historical Festival, which is hosted every year on the first full weekend of June. History of the fort has been relived at the festival for over 30 years.

Features at the festival include cavalry, fiddlers, square dancing, draft horse pulling, tomahawk throwing, food court, arts and crafts booths and a melodrama among other events. A ranch rodeo is part of the festival as well. Primitive camping and portable showers are available during that time in June.

Other events that have taken place at the fort include musical festivals and Frontier Christmas in December.

# Fort Sisseton



A military reenactment is one of the highlights at the Fort Sisseton Historical Festival held in June.



## B&S Lodging

**Fowl, Fish, Friends  
It's where the fun begins**

scottgrajczyk@gmail.com

**605-345-4706**

500 10th Ave. W., Webster, SD 57274

## Watertown Co-op Elevator Bird seed plant offers



• Lawn Seed

• Lawn Fertilizers

**Dog & Cat owners**

Check out our newest line of pet food



**Watertown Co-op Elevator**

Your local farmer owned and operated elevator  
345-3366 • Webster



*Your Home Away from Home*

## Strand-Kjorsvig Living Center

801 MAIN ST., ROSLYN, SD

**36 Bed Facility for Rehab, Assisted Living  
Center and Skilled Nursing Care**

Medicare/Medicaid/VA approved  
Call 486-4523 or s-khome.com

# Clubs and Organizations

## 4-H/Extension Agency

345-9504

## American Legion Auxiliary

Charlotte Hoverstadt  
345-4042

## Boy Scouts of America

Gary Sauer  
345-3665

## Bearcat Booster Club

Karen Clausen  
345-4651

## Bristol Commercial Club

Allegra Duerre  
492-3472

## Buffalo Plains Historical Foundation, Inc.

Lily

## Catholic Daughters of the Americas

Joanne Herr  
492-3325

## Day County Arts Council

Jennifer Moos  
588-0103

## Day County Community Foundation

Tom Sannes  
345-3321

## Day County Gymnastics

Renee Amdahl  
345-3654

## Day County Youth Football League

Craig Case  
345-3096

## Community Transit

345-4486

## Farmers Union

Franklin Olson  
486-4494

## FCCLA

345-2749

## Why Webster?

### Education

New buildings, smaller class sizes and opportunities to help your student succeed. More than 86% of our high-school graduates pursue post-secondary education.

### Wellbeing

Sanford & Avera community, with a hospital, two clinics, dental and vision centers, visiting specialists and 24-hr fitness center access. Ranked 10th healthiest county in South Dakota.

### Lifestyle

Hunting and fishing are always in season, NEW aquatic center opening in 2013, baseball and soccer complexes, golf course, bowling, movie theater, snowmobile trails, and so much more!

**NOW HIRING**  
in Webster, SD

We have a job for you!

and housing!

[WebsterSD.com](http://WebsterSD.com)

[Facebook.com/DayCountyJobs](https://www.facebook.com/DayCountyJobs)

605-345-3159



### FFA Association

Fred Zenk  
345-4762

### Girl Scouts of America

Lisa Schoenbeck  
345-3745

### Horizons

Josh Wagner  
486-4365

### Izaak Walton League

David Trefz  
345-4561

### Kiwanis

Chad Hesla  
605-881-0007

### Lions Club - Club Eden

Francis Cikanek  
486-4860

### Needs Anonymous

345-4410

### NE South Dakota Community Action Program

596-4360

### Progressive Reading Circle

Carol McFarland  
345-3203

### Webster Area Basketball Association (WABA)

Kevin Schimmel  
345-3997

### Webster Area Chamber of Commerce

Marcia Lefman  
345-4468

### Webster Area Development Corporation

345-3159

### Webster Area Soccer Association

Cindy Hahler  
345-3604

### Webster Swim Team

Rose Vogl  
345-4612

### Webster Youth Center

345-4175

Clubs and organizations are perfect ways of connecting with your local community!

## Glacial Gateway Development & Investment Group, LLC



### PRODUCTS



Manufacturer of  
**MUD-PUPPY**  
ALL-TERRAIN VEHICLE



Go through any terrain with a Mud-Puppy!

- Utility or Amphibious
- Water Cooled Engine
- Heavy Duty Fiberglass Body
- Hydraulic Transmission
- Steel Frame
- Hydraulic Motors on Wheels
- Deep Tread Tires

## Eden Railroad LUMBER & HARDWARE

For all your lumber & hardware needs

12219 HWY. 25 • EDEN, SD 57232  
(605) 486-4060

## HAYCOT MANUFACTURING & AG PARTS, LLC

Fabrication, Welding & Farm Repairs  
Dock & Lift Repairs

319 TAFT AVENUE  
EDEN, SD 57232  
605-486-4398 (P)  
605-486-0070 (F)



# Fishing in the Glacial Lakes



**There is nothing like a sunny Saturday afternoon out fishing with the boys!**

The Glacial Lakes region of South Dakota offers some of the best fishing, hunting and outdoor activities for residents and visitors to the area. With a variety of lakes within 30 minutes of the county seat of Webster, some may call it a fisherman's paradise.

Fishing is not the only lake activity one can enjoy here in Day County. From jet skiing to paddle boating and camping out along the lake, the open water makes for a variety of fun and relaxing activities.

Webster and neighboring towns offer a span of fine motels, bed and breakfast areas, campgrounds and resorts to keep guests well accommodated while they take advantage of all Day County has to offer.

The Glacial Lakes Guide includes fishing forecasts and maps of area lakes.

Event information and the Glacial Lakes Guide can be obtained by contacting the Webster Area Chamber of Commerce at (605) 345-4668.

A variety of state fishing records have come out of the abundant waters of Day County. In 2004, the state record yellow perch weighing 2 lbs., 12 oz. was caught on Bitter Lake. More recently in 2006, the state record white bass was caught on our own Blue Dog Lake, weighing 4 lbs. 10 oz. The record common carp was caught on Waubay Lake in 2001, weighing in at 37 lbs.

Refer to the South Dakota Game, Fish & Parks fishing handbook for complete set of rules and regulations.

## **TLC Physical Therapy, Inc.**

1290 N Main, Suite 2, Mike's Mini-mall, Webster  
345-3710 or 888-345-3852 • email:tlcphyth@itctel.com

**Thea Loy Pallansch, PT, DPT**

**Jennifer Pallansch, DPT**

**Connie Bacon, PTA**

## **TLC Inc. Fitness Center**

1290 N Main, Suite 1, Mike's Mini-mall, Webster

The TLC Fitness Center is open 24/7 to members with a key. With membership, members receive unlimited use of exercise equipment for cardiac and aerobic workouts, muscle strengthening and work conditioning; body fat analysis and courtesy locker for use during workout.

Fitness Center monthly fees:

- Age 16 through college – \$15
- Seniors 65+ – \$20
- Adults – \$25

**Exercise can help:**

- Reduce weight
- Tone muscles
- Cardiac conditioning
- Increase energy
- Relieve stress
- **YOU FEEL GOOD ABOUT YOURSELF!**

*After 11 paid months, you will receive the 12th month absolutely free!*

# OPEN ALL YEAR

## WORLD CLASS FISHING & HUNTING

### GREAT HUNTING

Roy Lake and the surrounding glacial lakes provide prime locations for waterfowl, deer, and turkey. Roy Lake is in Marshall County which has the most public hunting areas in eastern South Dakota (approx. 55,000 acres).

### FALL FISHING

Roy Lake is your place for great fall fishing. We are known for it's ability to be a beautiful and natural nursery for many freshwater species of fish including Walleye, Smallmouth Bass, Largemouth Bass, Northern Pike, Yellow Perch, Bluegill, Black Crappie and Yellow Bullheads.

**FUN**  
FOR YOUR ENTIRE  
FAMILY, CORPORATE  
GROUP OR  
PRIVATE PARTY



**WE OFFER A  
FABULOUS GUIDE  
SERVICE AS WELL!**

# Roy Lake

## Resort & Lodge

Located In The Heart of the Glacial Lakes  
in Northeastern South Dakota



### GREAT ICE FISHING

Roy Lake has incredible ice fishing we offer Walleye, Bass, Northern and Pan Fish. We are located half way in-between Britton & Sisseton on South Dakota Highway 10. We are on a 2500 acre Glacial Lake that boasts excellent ice fishing. It is also located anywhere from 5 to 20 minutes from 48 other Glacial Lakes of various sizes which are primarily multi-species fishing lakes that are great for Ice fishing.



*Now Booking  
for Fall & Winter Fishing,*

605.448.5498

jan@roylakeresort.com

**www.RoyLakeResort.com**

# Who does what?

## Courthouse

### Assessor's office

(first floor)

Assesses the value of property and buildings  
Can tell you how much your property is worth  
and the value of surrounding properties

### Auditor's office

(first floor)

Voter registration (need valid South Dakota  
driver's license to register)  
Registration can also be done when applying  
for SD license

### Driver examination station

(basement)

Open 8 a.m. to 4:30 p.m. (only on Friday)

## Register of Deeds

(first floor)

Transfer of deeds

## Treasurer's office

(first floor)

Payment of property taxes  
Vehicle (automobile, boat, snowmobile, etc.)  
registration and licensing


## City Hall

(first floor)

Turns on water/sewer services (contact  
individual utilities for other services)  
Application for building permit



**Dike's**  
Hwy. 12, Webster  
345-4735



Bait • Tackle • Ammo • Gas • Goodies  
Hunting and fishing licenses  
ATM • Casino

**We Sell & Repair**  
Garden Tractor, ATV and Implement Tires

*Don't forget we  
have batteries as well!*



**Grosek's**  
515 Main St., Webster, SD 57274 • (605) 345-2602

## New Frontier Steakhouse & Lounge

Steak, Chicken, Seafood and Burgers

*Take out available*



*Check out our  
Kids' Menu*

*Stop in and enjoy delicious food  
in a relaxing atmosphere*

*Sandwiches,  
Steaks & More  
Along with  
Homemade Specials*



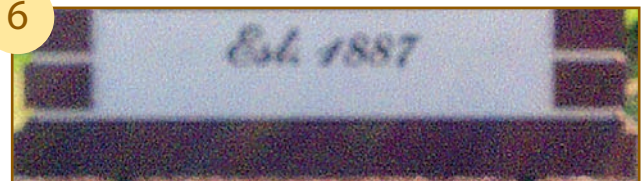
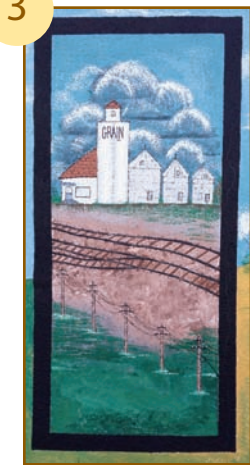
## New Frontier Steakhouse & Lounge

500 Main St. • Webster, SD 57274 • 345-9988

We accept VISA, MasterCard & Discover  
• Open at 5 p.m. nightly

# Hidden Treasures of Day County

Below are unique photos taken in the Day County area.  
Do you know where they are?



**ANSWERS ON PAGE 46**

# Your elected officials

Elected officials as of January 2013

## Bristol

Joshua Atherton, president; Jim Peterson, vice president; Fran Morehouse, Paul Orr and Chris Farrell.

## Webster

Mayor Mike Grosek, Wayne Klungseth, Dale Miller, Jim Grimes, Roger Monson, Wally Pribyl and Morgan Dorsett.

## Roslyn

Gary Knebel, president; Tom Lee and Steve Schmidt.

## Andover

Ilene Helmer, president; Lawrence Dolney and John Grimsrud.

## Grenville

Andrew Dolney, president; Anthony Lesnar and Lynae Wright.

## Pierpont

Audrey Johnson, president; JaDee Dwight and Nichole Bertsch.

## Webster Area School

Mark Hanson, chairman; Tom Sannes, Kathy Meland, Jamie Reetz and Randy Ryan.

## Waubay School Board

Duane Zubke, Connie Daniel, Sandy Hinze, Duncan Davis and Kevin Jorgenson.

## County Commission

Rick Tobin, chairman; Gary Block, Linda Walters, Jim Tompkins and Darrell Hildebrandt.

## Dist. I State Legislators

Sen. Jason Frerichs, Rep. Susan Wismer and Rep. Dennis Feickert.

# Stop by and check out all we have to offer!

**FOOD • ICE • GAS • DIESEL • LP EXCHANGE**



**Blender Bar**  
for great  
shakes &  
smoothies!



**Hot Stuff  
Pizza &  
Food Items**

**Stop in to the  
BEER CAVE**



**DVD Movie Rentals to watch the latest releases!**

**Car &  
Pet Wash**

**ATM  
Machine  
Available**



**C-Store**

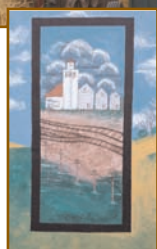
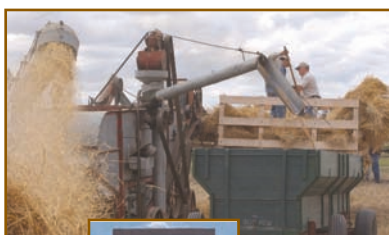
Located on the corner of  
Highways 12 & 25,  
Webster • 345-3549

**Open 7 Days a Week 6 a.m.-10 p.m.**

## Answers to Day County Hidden Treasure Pictures – 44

### Day County Hidden Treasures

1. Andover James Valley Threshing Show
2. Museum of Wildlife, Science & Industry in Webster
3. The I in Bristol's Mural
4. Myron Floren on the Roslyn City Sign
5. Waubay National Wildlife Refuge Sign
6. Welcome to Pierpont Sign



### Community Oil of the Glacial Lakes

Gas • Oil • Tires  
Propane • Bulk fuel oil

Highway 25 in Roslyn  
486-4358

### ICE CREAM SHACK

Ice Cream  
Chicken  
Burgers  
French Fries

Hwy. 25 • Roslyn (next to Community Oil)  
486-4890



*Come Experience Webster's  
Newest Church  
Freedom Worship Center!*

**Every Saturday – 7 p.m.**  
Webster Elementary Gym, 102 East 9th Ave.

*Great Worship!*

*Pastor Drew Becker Speaking*

Everyone Welcome

Nursery Available

**Lead Pastors: Drew & Christi Becker**

**For more information: 605.725.0777**

[www.time4freedom.org](http://www.time4freedom.org)

# ALPHABETICAL BUSINESS LISTING

## A

### **A&S Hardware Hank & Rental**

20 U.S. Highway 12  
Webster, SD 57274  
Phone (605) 345-3821  
Fax (605) 345-4821

### **A&W**

Junction of Highways 12 & 25  
10 U.S. Highway 12  
Webster, SD 57274  
Phone (605) 345-4140

### **A Cut Above**

1290 Main St. Suite 4  
Webster, SD 57274  
Phone (605) 345-3715

### **Ackerman Tree Service, Inc.**

74 East 3rd Ave.  
Webster, SD 57274  
Phone (605) 345-4477

### **ALCO**

620 U.S. Highway 12  
Webster, SD 57274  
Phone (605) 345-3376  
www.duckwall.com

### **American Family Insurance, Ryan Likness Agency, Inc.**

702 Main St.  
Webster, SD 57274  
Phone (605) 345-4860  
insurance-agency.amfam.com/  
SD/ryan-g-likness/

### **Avera Medical Group Waubay**

80 N Main St.  
Waubay, SD 57273  
Phone (605) 947-3422  
averastlukes.org

### **Avera Medical Group Webster**

401 E. U.S. Highway 12  
Webster, SD 57274  
Phone (605) 345-2222  
averastlukes.org

## B

### **B&S Lodging**

500 10th Ave. W.  
Webster, SD 57274  
Phone (605) 345-4706  
scottgrajczyk@gmail.com

### **Bethesda Home & Heritage Village**

129 West Highway 12  
Webster, SD 57274  
Phone (605) 345-3331  
www.bethesdanursinghome.com

### **Bierschbach Electric Inc.**

44015 147th St.  
Webster, SD 57274  
Phone (605) 345-4929  
E-mail: sbiersch@hotmail.com

### **The Blossom Shoppe & Gifts**

609 Main St.  
Webster, SD 57274  
Phone (605) 345-4405

### **Boomer's Outback House & Hotel**

Junction of Highways 12 & 25  
Webster, SD 57274  
Phone (605) 345-3107  
www.boomersoutback.com

### **Breske Crop Insurance**

15 West 7th Ave.  
Webster, SD 57274  
Phone (605) 345-2480  
Fax (605) 345-2481  
www.breskecropinsurance.com

### **Brian's Auto Body**

1710 Commerce Lane  
Webster, SD 57274  
Phone (605) 345-2622  
cell (605) 520-2830

### **Bristol Commercial Club**

515 West St. SW  
Bristol, SD 57219  
bristolsd.com

### **Bristol Storage**

14108 423rd Ave.  
Bristol, SD 57219  
(605) 492-3472  
clintduerre@hotmail.com

### **Bullert Automotive**

502 First St. E.  
Webster, SD 57274  
Phone (605) 880-0863 or 880-8085

## C

### **Capitol Lanes & Lounge**

125 Main St.  
Bristol, SD 57219  
Phone (605) 492-3691

### **Karmen Case Day Care**

722 W. 11th Ave.  
Webster, SD 57274  
Phone (605) 345-3096

### **Cenex Convenience Store**

Junction of Highways 12 & 25  
PO Box 509  
Webster, SD 57274  
Phone (605) 345-3549

### **Circle Pines Motel**

240 East Highway 12  
Waubay, SD 57273  
Phone (605) 947-4641  
Reservations only: (877) 324-5161  
www.circlepinesmotel.com

### **Coester Funeral Home**

510 U.S. Highway 12  
Webster, SD 57274  
Phone (605) 345-3711  
www.coesterfuneralhome.net

### **Community Oil of the Glacial Lakes**

110 Highway 25  
Roslyn, SD 57261  
Phone (605) 486-4358  
Fax (605) 486-4281

### **CorInsurance**

26 West 7th Ave.  
PO Box 60  
Webster, SD 57274  
Phone (605) 345-3320  
corinsurance.com

### **Cornwell Drug**

701 Main St.  
PO Box 490  
Webster, SD 57274  
Phone (605) 345-3351  
Fax (605) 345-3352

### **CorTrust Bank**

26 West 7th Ave.  
PO Box 60  
Webster, SD 57274  
Phone (605) 345-3342  
www.cortrustbank.com

## D

### **Dacotah Bank**

600 Main St.  
PO Box 596  
Webster, SD 57274  
Phone (605) 345-3306  
dacotahbank.com

### **Dacotah Insurance**

600 Main St.  
PO Box 260  
Webster, SD 57274  
Phone (605) 345-3306  
E-mail:  
scott.langager@dacotahbank.com

### **Dakota Fiberglass**

1720 Commerce Lane  
Webster, SD 57274  
Phone (605) 345-3046  
dakotafiberglass.com

**Dakota Foundry**  
20 North Park Lane  
Webster, SD 57274  
Phone (605) 345-3349  
dakotafoundry.com

**Dakota Properties Real Estate**  
13967 U.S. Highway 12  
Webster, SD 57274  
Phone (605) 345-3991  
Cell (605) 380-8240  
dakotaproperties.com

**Dave Hahler Automotive**  
500 U.S. Highway 12  
PO Box 300  
Webster, SD 57274  
Phone (605) 345-4792  
hahlerauto.com

**Day County Arts Center**  
605 Main St.  
PO Box 52  
Webster, SD 57274  
Phone (605) 345-4333

**Day County TV & Appliance**  
509 Main St.  
Webster, SD 57274  
Phone (605) 345-3393  
Fax (605) 345-3393

**The Decoy Bar**  
518 South Main St.  
Webster, SD 57274  
Phone (605) 345-4081

**Delaney, Nielsen & Sannes, PC**  
21 West 6th Ave.  
PO Box 615  
Webster, SD 57274  
Phone (605) 345-3321

**Delaney & Sannes Real Estate**  
21 West 6th Ave.  
PO Box 615  
Webster, SD 57274  
Phone (605) 345-3321

**Dependable Sanitation**  
1520 North Brown County 19  
Aberdeen, SD 57401  
Phone (605) 225-9316  
Day County restricted use facility:  
(605) 345-4839  
Fax (605) 225-1619

**Dorsett Chiropractic Center**  
511 Main St.  
Webster, SD 57274  
Phone (605) 345-6222  
Fax (605) 345-6224

**Detour Bar**  
South Main St.  
PO Box 95  
Waubay, SD 57273  
Phone (605) 947-3414

**Duerre Excavating**  
14108 423rd Ave.  
Bristol, SD 57219  
Phone (605) 492-3472  
Cell (605) 880-2412  
dei@nvc.net

## E

**E&K Mobile Home Park**  
720 East 8th St.  
Webster, SD 57274  
Phone (605) 345-4523  
(605) 881-0414

**Eden Railroad Lumber & Hardware LLC**  
319 E. Taft Ave.  
Eden, SD 57232  
486-4060

## F

**Fiksdal Funeral Service, Inc.**  
122 W. 5th Ave.  
Webster, SD 57274  
Phone (605) 345-3122  
fiksdalfuneral.com

**Fiksdal Furniture & Gifts**  
621 Main St.  
Webster, SD 57274  
Phone (605) 345-3312

**Flower Cart**  
501 Main St.  
Webster, SD 57274  
Phone (605) 345-3212  
(800) 794-7398

**Foothills Contracting**  
701 West Highway 12  
PO Box 558  
Webster, SD 57274  
Phone (605) 345-3795  
Fax (605) 345-4022

**Freedom Worship Center**  
Phone (605) 725-0777  
time4freedom.org

**Fritz's Furniture & Antiques**  
500 3rd St.  
Bristol, SD 57219  
Phone (605) 492-3199  
Fax (605) 492-3299

## G

**G. Todd Garry, PA**  
513 Main St.  
Webster, SD 57274  
Phone (605) 345-3639  
Fax (605) 345-3509

**The Galley Steakhouse, Lounge & Motel**  
230 U.S. Highway 12  
Webster, SD 57274  
Phone (605) 345-9989  
thegalleyinwebstersd.com

**Glacial Gateway Development & Investment Group**  
319 E. Taft Ave.  
Eden, SD 57232

**Glacial Lakes Electric**  
43170 U.S. Highway 12  
Webster, SD 57274  
Phone (605) 590-0470

**Great Western Bank**  
1301 Main St.  
Webster, SD 57274  
Phone (605) 345-4671  
greatwesternbank.com

**Grosek's**  
515 Main St.  
Webster, SD 57274  
Phone (605) 345-2602

## H

**HR One Stop**  
Jct. U.S. Highway 12 and Main St.  
Waubay, SD 57273  
Phone (605) 947-4271  
hr1stop@galaxyh.net

**Harlow's Bus Sales**  
211 East Highway 12  
PO Box 419  
Webster, SD 57274  
Phone (605) 345-4023  
ron.block@harlowsbussales.com

**HAYCOT Manufacturing LLC**  
319 E. Taft Ave.  
Eden, SD 57232  
486-4398

**Hedahls Auto Plus**  
300 East Highway 12  
PO Box 307  
Webster, SD 57274  
Phone (605) 345-3303

**Holiday Motel**  
300 W. U.S. Highway 12  
PO Box 478  
Webster, SD 57274  
Phone (605) 345-3323  
Reservations only: (800) 667-3323

**Hoverstadt Electric**  
43650 142nd St.  
Webster, SD 57274  
Phone (605) 345-4042  
Fax (605) 345-1310

**ITC Interstate Telecommunications Cooperative, Inc.**  
14 East 7th Ave.  
Webster, SD 57274  
Phone (605) 345-4260  
Fax (605) 345-3708  
www.itc-web.com

**J****Jacobson Agency**

425 East 4th Ave.  
Bristol, SD 57219  
Phone (605) 492-3425  
Cell (605) 492-7912  
E-mail: lone@nvc.net

**James Valley Telecommunications**

235 E. 1st Ave.  
PO Box 260  
Groton, SD 57445  
Phone: 605-397-2323 or 800-556-6525  
jamesvalley.com

**Johnson Construction**

42512 137th St.  
Bristol, SD 57219  
Phone (605) 492-3143  
Fax (605) 492-3143  
E-mail: gjohnson@itctel.com

**Johnson Lumber**

22 W. 5th Ave.  
Webster, SD 57274  
Phone (605) 345-6000 or  
345-3761

**Johnson Storage Rentals**

520 E. 1st St.  
Webster, SD 57274  
Phone (605) 345-4149

**Jorgenson Meat Market**

205 West Railway Ave.  
Waubay, SD 57273  
Phone (605) 947-4460

**Jorgenson Meat Store**

32 U.S. Highway 12  
Waubay, SD 57273  
Phone (605) 947-4461

**K****Keller Mechanical Inc.**

523 Main St.  
Wallace, SD 57235  
Phone (605) 758-2900

**KMI Insurance & Consulting**

319 Taft Ave.  
Eden, SD 57232  
Cell (605) 265-0294

**Krege Family Chiropractic, PC**

610 Main St.  
Webster, SD 57274  
Phone (605) 345-4960  
Fax (605) 345-4960  
E-mail: drrdkdc@itctel.com

**Kuecker Kountry Farms**

43846 147th St.  
Webster, SD 57274  
Phone (605) 345-4601  
Fax (605) 345-1302

**Kuecker Seed Farm**

14762 438th Ave.  
Webster, SD 57274  
Phone (605) 345-3169  
Cell (605) 380-3925

**L****L&L Bowling Center**

14038 SD Highway 25  
Webster, SD 57274  
Phone (605) 345-4129

**La Bella Vita**

705 Main St.  
Webster, SD 57274  
Phone (605) 345-3449

**Lake Region Electric Association, Inc.**

PO Box 341  
Webster, SD 57274  
Phone (605) 345-3379 or  
800-657-5869

**Lakeside Farm Bed & Breakfast**

13476 437th Ave.  
Webster, SD 57274  
Phone (605) 486-4430  
www.bbonline.com/sd/lakesidefarm

**Larsen Realty**

510 Main St.  
Webster, SD 57274  
Phone (605) 345-4062

**Larson Construction**

515 East 12th Ave.  
Webster, SD 57274  
Phone (605) 345-3244  
Fax (605) 345-4155

**Louie's Auto Sales**

202 Main St.  
Pierpont, SD 57468  
Phone (605) 325-3379

**Lynn Lake Lodge**

13551 427th Ave.  
Webster, SD 57274  
Phone (605) 345-4564  
Fax (605) 237-0309  
E-mail: lynnlake@itctel.com

**M****Midcontinent Communications**

3828 6th Ave. SE  
Aberdeen, SD 57401  
Phone (800) 888-1300

**Mike's Jack & Jill**

1300 North Main St.  
PO Box 543  
Webster, SD 57274  
Phone (605) 345-3068

**Mr. Bill's**

110 Main St.  
Pierpont, SD 57468  
Phone (605) 325-3314

**Museum of Wildlife, Science & Industry**

760 W. U.S. Highway 12  
Webster, SD 57274  
Phone (605) 345-4751  
www.sdmuseum.org

**N****The New Frontier Steakhouse & Lounge**

500 Main St.  
Webster, SD 57274  
Phone (605) 345-3759  
E-mail: steved@itctel.com

**Northeastern Mental Health Center**

West Highway 12  
PO Box 145  
Webster, SD 57274  
Phone (605) 345-3146 or  
605-225-1010

**Northland Auto Center**

310 E. U.S. Highway 12  
Webster, SD 57274  
Phone (605) 345-NAPA (6272)  
(877) 473-5870  
www.northlandautocenter.com

**Northside Implement**

14088 SD Highway 25  
Webster, SD 57274  
Phone (605) 345-4761  
or (800) 675-4761  
northsideimp.com

**NorthStar Mechanical Inc.**

115 E. 5th Ave.  
Webster, SD 57274  
Phone (605) 345-4235

**NorthWestern Energy**

Webster Office  
201 W. 5th Ave.  
Webster, SD 57274  
(800) 245-6977  
northwesternenergy.com

**Now & Forever Photography**

Main St.  
Webster, SD 57274  
Phone (605) 345-4187

**O****Oscar's Bar & Grill**

509 Main Street  
Roslyn, SD 57261  
Phone (605) 486-4780

**P****Pereboom's Cafe/  
Boomer's Grill & Casino**

Junction of Highways 12 & 25  
Webster, SD 57274  
Phone (605) 345-9986  
boomersoutback.com

**Pike's Clark**

20 East Highway 12  
Webster, SD 57274  
Phone (605) 345-4735

**Pizza Hut**

511 East Highway 12  
Webster, SD 57274  
Phone (605) 345-3383

**Pleasant View Apartments**

1101 East 7th St.  
Webster, SD 57274  
Phone (605) 345-3181  
Fax (605) 345-3267  
E-mail: pleasant@itctel.com

**Purple Cow Ice Cream Parlor**

30 U.S. Highway 12  
Waubay, SD 57273  
Phone (605) 947-4461

**R****RDO Equipment Sales**

901 W. U.S. Highway 12  
Webster, SD 57274  
Phone (605) 345-3391  
(800) 658-2252  
rdoequipment.com

**Reporter & Farmer**

516 Main St.  
PO Box 30  
Webster, SD 57274  
Phone (605) 345-3356  
www.reporterandfarmer.com

**Roy Lake Resort**

Phone (605) 448-5498  
jan@roylakeresort.com  
roylakeresort.com

**S****Sanford Clinic Webster**

101 Peabody Dr.  
Webster, SD 57274  
Phone (605) 345-4141

**Sanford Webster Medical Center**

1401 W. 1st St.  
Webster, SD 57274  
Phone (605) 345-3336  
sanfordwebster.org

**Schoenbeck Rentals**

Apartments and houses  
Loren Schoenbeck  
Webster, SD 57274  
(605) 345-3745

**Charla Shoemaker Daycare**

14321 SD Highway 25  
Webster, SD 57274  
(605) 345-4091  
(605) 520-9519

**Dan Smeins, attorney**

506 Main St.  
Webster, SD 57274  
Phone (605) 345-4875  
Fax (605) 345-4250  
E-mail: drslaw@itctel.com

**Snaza Rentals**

Tanya and Lydel  
Webster, SD 57274  
345-3588

**Southside Campground**

14255 Highway 25  
Webster, SD 57274  
Phone (605) 345-4405  
or Cell (605) 880-7442

**Southside Repair**

14255 Highway 25  
Webster, SD 57274  
Phone (605) 345-4774

**Sportsmans Cove, LLC**

30 W. U.S. Highway 12  
Webster, SD 57274  
Phone (605) 345-2468  
www.thesportsmanscove.net

**Stonefire Motel**

100 W. U.S. Highway 12  
Webster, SD 57274  
Phone (605) 345-4329  
stonefiresd@gmail.com

**Strand-Kjorsvig Living Center**

801 Main St.  
Roslyn, SD 57261  
Phone (605) 486-4523  
s-khome.com

**Sturdevant's Auto Parts**

1400 North Main St.  
Webster, SD 57274  
Phone (605) 345-4755  
www.sturdevants.com

**Subway**

1290 Main St. Suite 5  
Mike's Mini Mall  
Webster, SD 57274  
Phone (605) 345-4780

**Sun Dial Manor & Johnson Assisted Living Center**

410 2nd St.  
Box 337  
Bristol, SD 57219  
Phone (605) 492-3615  
E-mail: sundial@nvc.net

**T****Tailfeather Productions Photography**

by Stacey Williams Dunse  
615 Main St.  
Webster, SD 57274  
Phone (605) 345-2550  
tailfeatherproductions.com

**Thrivent Financial for Lutherans**

519 Main St.  
PO Box 595  
Webster, SD 57274  
Phone (605) 345-3635  
(888) 652-9759  
Fax (605) 345-4332

**TLC Marine Service**

611 E Highway 12  
Webster, SD 57274  
Phone (605) 345-7500

**TLC Physical Therapy, Inc. Fitness Center**

1290 N. Main St. Suite 2  
Webster, SD 57274  
Phone (605) 345-3710  
(888) 345-3852

**Tony's "Old Fashioned" Barbershop**

523 Main St.  
Webster, SD 57274  
Phone (605) 345-3071

**U****Ultimate Massage**

West Highway 12 -  
Lower level of Foothills  
Contracting building  
Webster, SD 57274  
Phone (605) 345-3444

**V****Vision Care Associates**

101 Peabody Dr. Suite 2  
Webster, SD 57274  
Phone (605) 345-4631

**Vogl's Carpet**

517 Main St.  
Webster, SD 57274  
Phone (605) 345-4919  
Fax (605) 345-4612

**Vogl's Woodworking**

14097 436th Ave.  
Webster, SD 57274  
Phone (605) 345-2408

**W****Wagner Landscaping**

Josh Wagner  
43347 129th St.  
Roslyn, SD 57261  
Phone (605) 486-4365  
Cell (605) 695-9776

**Watertown Co-op Elevator**

413 Main, 409 East 4th St.  
PO Box 87  
Webster, SD 57274  
Phone (605) 345-3366 - Elevator  
(605) 345-4643 - Main Street  
Fax (605) 345-4533

**Waubay Clipper**  
122 North Main St.  
PO Box 47  
Waubay, SD 57273  
Phone (605) 947-4501  
clpjoint@itctel.com

**Waubay Legion Club**  
Main Street  
Box 305  
Waubay, SD 57273  
Phone (605) 947-4376

**Webster American Legion**  
614 Main St.  
Webster, SD 57274  
Phone (605) 345-3416

**Webster Area Chamber of Commerce**  
513 Main St.  
PO Box 123  
Webster, SD 57274  
Phone (605) 345-4668  
(800) 571-7582  
www.webstersd.com

**Webster Area Development Corporation**  
PO Box 6  
Webster, SD 57274  
Phone (605) 345-3159  
webstersd.com

**Webster Auto Care**  
150 U.S. Highway 12  
PO Box 116  
Webster, SD 57274  
Phone (605) 345-4684

**Webster Beauty Salon & Laundromat**  
1117 North Main St.  
Webster, SD 57274  
Phone (605) 345-3355

**Webster Dental**  
101 Peabody Dr. Suite #3  
Webster, SD 57274  
Phone (605) 345-3000

**Webster Golf Course**  
1030 West 3rd St.  
Webster, SD 57274  
Phone (605) 345-3971

**Webster Lumber Home Center**  
North U.S. Highway 25  
PO Box 575  
Webster, SD 57274  
Phone (605) 345-4688  
websterhomecenter.com

**Webster Marine LLC**  
Eden-Webster  
319 E. Taft Ave.  
Eden, SD 57232  
486-4060 or 486-4398

**Webster Municipal Liquor**  
100 E. U.S. Highway 12  
Webster, SD 57274  
Phone (605) 345-4800

**Webster Theatre**  
704 Main St.  
Webster, SD 57274  
Phone (605) 345-4027

**Webster Tire Inc.**  
17 East 6th St.  
Webster, SD 57274  
Phone (605) 345-3950

**Webster Veterinary Clinic**  
1400 E. 7th St.  
Webster, SD 57274  
Phone (605) 345-4817

**Webster's Dakota Diner**  
508 Main St.  
Webster, SD 57274  
Phone (605) 345-4710

# CATEGORIES

## ACCOMMODATIONS

B&S Lodging  
Boomer's Outback House, Cabins  
& Hotel  
Circle Pines Motel  
Galley Motel  
Holiday Motel  
Lakeside Farm Bed & Breakfast  
Lynn Lake Lodge  
Roy Lake Resort & Campground  
Southside Campground  
Stonefire Motel

## AUTOMOTIVE SALES/PARTS/REPAIR

Brian's Auto Body  
Bullert Automotive  
Dave Hahler Automotive  
Grosek's  
Hedahls Auto Plus  
Louie's Auto Sales  
Northland Auto Center  
Southside Repair  
Sturdevant's Auto Parts  
Webster Auto Care  
Webster Tire, Inc.

## BARS/LIQUOR

The Decoy Bar  
Detour Bar  
Waubay Legion Club  
Webster American Legion  
Webster Municipal Liquor

## BEAUTY SALON/ BARBER

A Cut Above  
La Bella Vita  
Tony's "Old Fashioned" Barbershop  
Webster Beauty Salon & Laundromat

## BUILDING SUPPLIES/HARDWARE

A&S Hardware Hank & Rental  
Eden Railroad Lumber & Hardware, LLC  
Johnson Lumber  
Webster Lumber Home Center

## BUS SALES & SERVICE

Harlow's Bus Sales

## CHURCHES

Freedom Worship Center  
Tabor Free Lutheran Church

## CONSTRUCTION

Duerre Excavating  
Johnson Construction  
Larson Construction

## CONVENIENCE STORE

Cenex C- Store  
Community Oil of the Glacial Lakes  
HR One Stop  
Pike's Clark

## DAY CARE

Karmen Case  
Charla Shoemaker

## DEVELOPMENT/MANUFACTURING

Bristol Commercial Club  
Dakota Fiberglass  
Dakota Foundry  
Foothills Contracting  
Glacial Lakes Development &  
Investment Group  
Webster Area Chamber of Commerce  
Webster Area Development  
Corporation

## ELECTRICAL/ PLUMBING/HEATING/AC

Bierschbach Electric  
Glacial Lakes Electric  
Hoverstadt Electric  
Keller Mechanical, Inc.  
NorthStar Mechanical, Inc.

## ENTERTAINMENT

Capitol Lanes & Lounge  
Day County Arts Center  
L&L Bowling Center  
Museum of Wildlife, Science & Industry  
Webster Golf Course  
Webster Theatre

## FARM MACHINERY/AG SERVICES

Breske Crop Insurance  
HAYCOT Manufacturing, LLC  
Kuecker Kountry Farms  
Kuecker Seed Farm, Inc.  
Northside Implement  
RDO Equipment Co.  
Watertown Co-op Elevator

## FINANCIAL

CorTrust Bank  
Dacotah Bank  
Great Western Bank

## FLORIST

Blossom Shoppe & Gifts  
Flower Cart

## FUNERAL HOME

Coester Funeral Home  
Fiksdal Funeral Service, Inc.

## GROCERY

Jorgenson Meat Market  
Jorgenson Meat Store  
Mike's Jack & Jill

## HEALTH CARE

Avera Medical Group Waubay  
Avera Medical Group Webster  
Bethesda Home & Heritage Village  
Cornwell Drug  
Dorsett Chiropractic Center  
Krege Family Chiropractic, PC  
Northeastern Mental Health Center  
Sanford Clinic Webster  
Sanford Webster Medical Center  
Strand-Kjorsvig Living Center  
Sun Dial Manor  
& Johnson Assisted Living  
TLC Physical Therapy, Inc.  
Ultimate Massage  
Vision Care Associates  
Webster Dental

## HOME SERVICES

Ackerman Tree Service, Inc.  
ALCO  
Day County TV & Appliance  
Dependable Sanitation  
Fiksdal Furniture & Gifts  
Fritz's Furniture & Antiques  
Vogl's Carpet  
Vogl's Woodworking  
Wagner Landscaping

## INSURANCE/INVESTMENTS

American Family Insurance  
CorInsurance  
Dacotah Insurance  
Jacobson Agency  
KMI Insurance & Consulting  
Thrivent Financial for Lutherans

## NEWS MEDIA

Reporter & Farmer  
Waubay Clipper

## PHOTOGRAPHY

Now & Forever Photography  
Tailfeather Productions Photography

## PROFESSIONALS

Coester Funeral Home  
Delaney, Nielsen & Sannes, P.C.,  
attorneys  
Fiksdal Funeral Service, Inc.  
G.Todd Garry, accountant  
Dan Smeins, attorney

## REAL ESTATE

Dakota Properties  
Delaney & Sannes  
Larsen Realty

## CATEGORIES

### RENTALS/STORAGE

Bristol Storage  
E&K Mobile Home Park  
Johnson Storage Rentals  
Pleasant View Apartments  
Schoenbeck Rentals  
Snaza Rentals

### RESTAURANTS

A&W  
Dakota Diner  
The Galley Steakhouse & Lounge  
Mr. Bill's  
The New Frontier Steakhouse  
Oscar's Bar & Grill  
Pereboom's Cafe  
Pizza Hut  
Purple Cow Ice Cream Parlor  
Subway  
Webster's Dakota Diner

### SPORTING/MARINE

Sportsmans Cove  
TLC Marine Service  
Webster Marine, LLC

### UTILITIES

ITC Interstate Telecommunications  
Cooperative, Inc.  
James Valley Telecommunications  
Lake Region Electric Association, Inc  
Midcontinent Communications.  
NorthWestern Energy

### VETERINARY SERVICE

Webster Veterinary Clinic

Mark 1:13-18 (NIV)

## Jesus Announces the Good News

After John was put in prison, Jesus went into Galilee, proclaiming the good news of God. "The time has come," he said. "The kingdom of God has come near. Repent and believe the good news!"

## Jesus Calls His First Disciples

As Jesus walked beside the Sea of Galilee, he saw Simon and his brother Andrew casting a net into the lake, for they were fishermen. "Come, follow me," Jesus said, "and I will send you out to fish for people." At once they left their nets and followed him.

We welcome you to visit us this Sunday at

## HERITAGE VILLAGE & TABOR FREE LUTHERAN CHURCH

Call for times or see the church calendar  
in the Reporter & Farmer

**Mike McCarlson • 605-345-3073**

[www.afic.org](http://www.afic.org)

Clip n' Save

**FREE 6 week  
newspaper subscription!**

with South Dakota address

Your hometown newspaper covering the Day County Area!

**Stop in for all your printing needs**

Brochures • Business Cards • Letterheads • Envelopes • Forms

**Reporter & Farmer**

**345-3356**  
516 Main St., Webster, SD

Clip n' Save

# BUSINESS CATEGORY LISTING

## ACCOMMODATIONS

### B&S Lodging

500 10th Ave. W.  
Webster, SD 57274  
Phone (605) 345-4706  
scottgrajczyk@gmail.com

### Boomer's Outback House & Hotel

Junction of Highways 12 & 25  
Webster, SD 57274  
Phone (605) 345-3107  
www.boomersoutback.com

### Circle Pines Motel

240 East Highway 12  
Waubay, SD 57273  
Phone (605) 947-4641  
Reservations only: (877) 324-5161  
www.circlepinesmotel.com

### The Galley Steakhouse, Lounge & Motel

230 U.S. Highway 12  
Webster, SD 57274  
Phone (605) 345-9989  
thegalleyinwebstersd.com

### Holiday Motel

300 W. U.S. Highway 12  
PO Box 478  
Webster, SD 57274  
Phone (605) 345-3323  
Reservations only: (800) 667-3323

### Lakeside Farm Bed & Breakfast

13476 437th Ave.  
Webster, SD 57274  
Phone (605) 486-4430  
www.bbonline.com/sd/lakesidefarm

### Lynn Lake Lodge

13551 427th Ave.  
Webster, SD 57274  
Phone (605) 345-4564  
Fax (605) 237-0309  
E-mail: lynnlake@itctel.com

### Roy Lake Resort

Phone (605) 448-5498  
jan@roylakeresort.com  
roylakeresort.com

### Southside Campground

14255 Highway 25  
Webster, SD 57274  
Phone (605) 345-4405  
Cell (605) 880-7442

### Stonefire Motel

100 W. U.S. Highway 12  
Webster, SD 57274  
Phone (605) 345-4329  
stonefired@gmail.com

## AUTOMOTIVE SALES/PARTS/REPAIR

### Brian's Auto Body

1710 Commerce Lane  
Webster, SD 57274  
Phone (605) 345-2622  
Cell (605) 520-2830

### Bullert Automotive

502 First St. E.  
Webster, SD 57274  
Phone (605) 880-0863 or 880-8085

### Dave Hahler Automotive

500 U.S. Highway 12  
PO Box 300  
Webster, SD 57274  
Phone (605) 345-4792  
hahlerauto.com

### Grosek's

515 Main St.  
Webster, SD 57274  
Phone (605) 345-2602

### Hedahls Auto Plus

300 East Highway 12  
PO Box 307  
Webster, SD 57274  
Phone (605) 345-3303

### Louie's Auto Sales

202 Main St.  
Pierpont, SD 57468  
Phone (605) 325-3379

### Northland Auto Center

310 E. U.S. Highway 12  
Webster, SD 57274  
Phone (605) 345-NAPA (6272)  
(877) 473-5870  
www.northlandautocenter.com

### Southside Repair

14255 Highway 25  
Webster, SD 57274  
Phone (605) 345-4774

### Sturdevant's Auto Parts

1400 North Main St.  
Webster, SD 57274  
Phone (605) 345-4755  
www.sturdevants.com

### Webster Auto Care

150 U.S. Highway 12  
PO Box 116  
Webster, SD 57274  
Phone (605) 345-4684

### Webster Tire Inc.

17 East 6th St.  
Webster, SD 57274  
Phone (605) 345-3950

## BARS/LIQUOR

### The Decoy Bar

518 South Main St.  
Webster, SD 57274  
Phone (605) 345-4081

### Detour Bar

South Main St.  
PO Box 95  
Waubay, SD 57273  
Phone (605) 947-3414

### Waubay Legion Club

Main Street  
Box 305  
Waubay, SD 57273  
Phone (605) 947-4376

### Webster American Legion

614 Main St.  
Webster, SD 57274  
Phone (605) 345-3416

### Webster Municipal Liquor

100 E. U.S. Highway 12  
Webster, SD 57274  
Phone (605) 345-4800

## BEAUTY SALON/ BARBER

### A Cut Above

1290 Main St. Suite 4  
Webster, SD 57274  
Phone (605) 345-3715

### La Bella Vita

705 Main St.  
Webster, SD 57274  
Phone (605) 345-3449

### Tony's "Old Fashioned" Barbershop

523 Main St.  
Webster, SD 57274  
Phone (605) 345-3071

### Webster Beauty Salon & Laundromat

1117 North Main St.  
Webster, SD 57274  
Phone (605) 345-3355

# BUSINESS CATEGORY LISTING

## BUILDING SUPPLIES/ HARDWARE

### A&S Hardware Hank & Rental

20 U.S. Highway 12  
Webster, SD 57274  
Phone (605) 345-3821  
Fax (605) 345-4821

### Eden Railroad Lumber & Hardware LLC

319 E. Taft Ave.  
Eden, SD 57232  
486-4060

### Johnson Lumber

22 W. 5th Ave.  
Webster, SD 57274  
Phone (605) 345-6000 or  
345-3761

### Webster Lumber Home Center

North U.S. Highway 25  
PO Box 575  
Webster, SD 57274  
Phone (605) 345-4688  
websterhomecenter.com

## BUS SALES & SERVICE

### Harlow's Bus Sales

211 East Highway 12  
PO Box 419  
Webster, SD 57274  
Phone (605) 345-4023  
ron.block@harlowsbussales.com

## CHURCHES

### Freedom Worship Center

Phone (605) 725-0777  
time4freedom.org

### Tabor Free Lutheran Church

Phone (605) 345-3073

## CONSTRUCTION

### Duerre Excavating

14108 423rd Ave.  
Bristol, SD 57219  
Phone (605) 492-3472  
Cell (605) 880-2412  
dei@nvc.net

### Johnson Construction

42512 137th St.  
Bristol, SD 57219  
Phone (605) 492-3143  
Fax (605) 492-3143  
E-mail: gjohnson@itctel.com

## CONVENIENCE STORE

### Cenex Convenience Store

Junction of Highways 12 & 25  
PO Box 509  
Webster, SD 57274  
Phone (605) 345-3549

### Community Oil of the Glacial Lakes

110 Highway 25  
Roslyn, SD 57261  
Phone (605) 486-4358  
Fax (605) 486-4281

### HR One Stop

Jct. U.S. Highway 12 and Main St.  
Waubay, SD 57273  
Phone (605) 947-4271  
hr1stop@galaxyh.net

### Pike's Clark

20 East Highway 12  
Webster, SD 57274  
Phone (605) 345-4735

## DAY CARE

### Karmen Case Day Care

722 W. 11th Ave.  
Webster, SD 57274  
Phone (605) 345-3096

### Charla Shoemaker Daycare

14321 SD Highway 25  
Webster, SD 57274  
(605) 345-4091  
(605) 520-9519

## DEVELOPMENT/ MANUFACTURING

### Bristol Commercial Club

515 West St. SW  
Bristol, SD 57219  
bristolsd.com

### Dakota Fiberglass

1720 Commerce Lane  
Webster, SD 57274  
Phone (605) 345-3046  
dakotafiberglass.com

### Dakota Foundry

20 North Park Lane  
Webster, SD 57274  
Phone (605) 345-3349  
dakotafoundry.com

### Foothills Contracting

701 West Highway 12  
PO Box 558  
Webster, SD 57274  
Phone (605) 345-3795  
Fax (605) 345-4022

### Glacial Gateway Development & Investment Group

319 E. Taft Ave.  
Eden, SD 57232

### Webster Area Chamber of Commerce

513 Main St.  
PO Box 123  
Webster, SD 57274  
Phone (605) 345-4668  
(800) 571-7582  
www.webstersd.com

### Webster Area Development Corporation

PO Box 6  
Webster, SD 57274  
Phone (605) 345-3159  
webstersd.com

## ELECTRICAL/ PLUMBING/HEATING/AC

### Bierschbach Electric Inc.

44015 147th St.  
Webster, SD 57274  
Phone (605) 345-4929  
E-mail: sbiersch@hotmail.com

### Glacial Lakes Electric

43170 U.S. Highway 12  
Webster, SD 57274  
Phone (605) 590-0470

### Hoverstadt Electric

43650 142nd St.  
Webster, SD 57274  
Phone (605) 345-4042  
Fax (605) 345-1310

### Keller Mechanical Inc.

523 Main St.  
Wallace, SD 57235  
Phone (605) 758-2900

### NorthStar Mechanical Inc.

115 E. 5th Ave.  
Webster, SD 57274  
Phone (605) 345-4235

## ENTERTAINMENT

### Capitol Lanes & Lounge

125 Main St.  
Bristol, SD 57219  
Phone (605) 492-3691

### Day County Arts Center

605 Main St.  
PO Box 52  
Webster, SD 57274  
Phone (605) 345-4333

# BUSINESS CATEGORY LISTING

**L&L Bowling Center**  
14038 SD Highway 25  
Webster, SD 57274  
Phone (605) 345-4129

**Museum of Wildlife, Science  
& Industry**  
760 W. U.S. Highway 12  
Webster, SD 57274  
Phone (605) 345-4751  
www.sdmuseum.org

**Webster Golf Course**  
1030 West 3rd St.  
Webster, SD 57274  
Phone (605) 345-3971

**Webster Theatre**  
704 Main St.  
Webster, SD 57274  
Phone (605) 345-4027

## FARM MACHINERY/ AG SERVICES

**Breske Crop Insurance**  
15 West 7th Ave.  
Webster, SD 57274  
Phone (605) 345-2480  
Fax (605) 345-2481  
www.breskecropinsurance.com

**HAYCOT Manufacturing LLC**  
319 E. Taft Ave.  
Eden, SD 57232  
486-4398

**Kuecker Kountry Farms**  
43846 147th St.  
Webster, SD 57274  
Phone (605) 345-4601  
Fax (605) 345-1302

**Kuecker Seed Farm**  
14762 438th Ave.  
Webster, SD 57274  
Phone (605) 345-3169  
Cell (605) 380-3925

**Northside Implement**  
14088 SD Highway 25  
Webster, SD 57274  
Phone (605) 345-4761  
or (800) 675-4761  
northsideimp.com

**RDO Equipment Sales**  
901 W. U.S. Highway 12  
Webster, SD 57274  
Phone (605) 345-3391  
(800) 658-2252  
rdoequipment.com

**Watertown Co-op Elevator**  
413 Main, 409 East 4th St.  
PO Box 87  
Webster, SD 57274  
Phone (605) 345-3366 - Elevator  
(605) 345-4643 - Main Street  
Fax (605) 345-4533

## FINANCIAL

**CorTrust Bank**  
26 West 7th Ave.  
PO Box 60  
Webster, SD 57274  
Phone (605) 345-3342  
www.cortrustbank.com

**Dacotah Bank**  
600 Main St.  
PO Box 596  
Webster, SD 57274  
Phone (605) 345-3306  
dacotahbank.com

**Great Western Bank**  
1301 Main St.  
Webster, SD 57274  
Phone (605) 345-4671  
greatwesternbank.com

## FLORIST

**The Blossom Shoppe & Gifts**  
609 Main St.  
Webster, SD 57274  
Phone (605) 345-4405

**Flower Cart**  
501 Main St.  
Webster, SD 57274  
Phone (605) 345-3212  
(800) 794-7398

## FUNERAL HOME

**Coester Funeral Home**  
510 U.S. Highway 12  
Webster, SD 57274  
Phone (605) 345-3711  
www.coesterfuneralhome.net

**Fiksdal Funeral Service, Inc.**  
122 W. 5th Ave.  
Webster, SD 57274  
Phone (605) 345-3122  
fiksdalfuneral.com

## GROCERY

**Jorgenson Meat Store**  
32 U.S. Highway 12  
Waubay, SD 57273  
Phone (605) 947-4461

**Mike's Jack & Jill**  
1300 North Main St.  
PO Box 543  
Webster, SD 57274  
Phone (605) 345-3068

## HEALTH CARE

**Avera Medical Group Waubay**  
80 N Main St.  
Waubay, SD 57273  
Phone (605) 947-3422  
averastlukes.org

**Avera Medical Group Webster**  
401 E. U.S. Highway 12  
Webster, SD 57274  
Phone (605) 345-2222  
averastlukes.org

**Bethesda Home & Heritage Village**  
129 West Highway 12  
Webster, SD 57274  
Phone (605) 345-3331  
www.bethesdanursinghome.com

**Cornwell Drug**  
701 Main St.  
PO Box 490  
Webster, SD 57274  
Phone (605) 345-3351  
Fax (605) 345-3352

**Dorsett Chiropractic Center**  
511 Main St.  
Webster, SD 57274  
Phone (605) 345-6222  
Fax (605) 345-6224

**Krege Family Chiropractic, PC**  
610 Main St.  
Webster, SD 57274  
Phone (605) 345-4960  
Fax (605) 345-4960  
E-mail: drrdkdc@itctel.com

**Northeastern Mental Health Center**  
West Highway 12  
PO Box 145  
Webster, SD 57274  
Phone (605) 345-3146 or  
605-225-1010

**Sanford Clinic Webster**  
101 Peabody Dr.  
Webster, SD 57274  
Phone (605) 345-4141

**Sanford Webster Medical Center**  
1401 W. 1st St.  
Webster, SD 57274  
Phone (605) 345-3336  
sanfordwebster.org

# BUSINESS CATEGORY LISTING

## **Strand-Kjorsvig Living Center**

801 Main St.  
Roslyn, SD 57261  
Phone (605) 486-4523  
s-khome.com

## **Sun Dial Manor & Johnson Assisted Living Center**

410 2nd St.  
Box 337  
Bristol, SD 57219  
Phone (605) 492-3615  
E-mail: sundial@nvc.net

## **TLC Physical Therapy, Inc. Fitness Center**

1290 N. Main St. Suite 2  
Webster, SD 57274  
Phone (605) 345-3710  
(888) 345-3852

## **Ultimate Massage**

West Highway 12  
Lower Level of Foothills  
Contracting building  
Webster, SD 57274  
Phone (605) 345-3444

## **Vision Care Associates**

101 Peabody Dr. Suite 2  
Webster, SD 57274  
Phone (605) 345-4631

## **Webster Dental**

101 Peabody Dr. Suite #3  
Webster, SD 57274  
Phone (605) 345-3000

## HOME SERVICES

### **Ackerman Tree Service, Inc.**

74 East 3rd Ave.  
Webster, SD 57274  
Phone (605) 345-4477

### **ALCO**

620 U.S. Highway 12  
Webster, SD 57274  
Phone (605) 345-3376  
www.duckwall.com

### **Day County TV & Appliance**

509 Main St.  
Webster, SD 57274  
Phone (605) 345-3393  
Fax (605) 345-3393

### **Dependable Sanitation**

1520 North Brown County 19  
Aberdeen, SD 57401  
Phone (605) 225-9316  
Day County restricted use facility:  
(605) 345-4839  
Fax (605) 225-1619

www.reporterandfarmer.com

## **Fiksdal Furniture & Gifts**

621 Main St.  
Webster, SD 57274  
Phone (605) 345-3312

## **Fritz's Furniture & Antiques**

500 3rd St.  
Bristol, SD 57219  
Phone (605) 492-3199  
Fax (605) 492-3299

## **Vogl's Carpet**

517 Main St.  
Webster, SD 57274  
Phone (605) 345-4919  
Fax (605) 345-4612

## **Vogl's Woodworking**

14097 436th Ave.  
Webster, SD 57274  
Phone (605) 345-2408

## **Wagner Landscaping**

Josh Wagner  
43347 129th St.  
Roslyn, SD 57261  
Phone (605) 486-4365  
Cell (605) 695-9776

## INSURANCE/INVESTMENTS

### **American Family Insurance, Ryan Likness Agency, Inc.**

702 Main St.  
Webster, SD 57274  
Phone (605) 345-4860  
insurance-agency.amfam.com/  
SD/ryan-g-likness/

### **CorInsurance**

26 West 7th Ave.  
PO Box 60  
Webster, SD 57274  
Phone (605) 345-3320  
corinsurance.com

### **Dacotah Insurance**

600 Main St.  
PO Box 260  
Webster, SD 57274  
Phone (605) 345-3306  
E-mail:  
scott.langager@dacotahbank.com

### **Jacobson Agency**

425 East 4th Ave.  
Bristol, SD 57219  
Phone (605) 492-3425  
Cell (605) 492-7912  
E-mail: lone@nvc.net

## **KMI Insurance & Consulting**

319 Taft Ave.  
Eden, SD 57232  
Cell (605) 265-0294

## **Thrivent Financial for Lutherans**

519 Main St.  
PO Box 595  
Webster, SD 57274  
Phone (605) 345-3635  
(888) 652-9759  
Fax (605) 345-4332

## NEWS MEDIA

### **Reporter & Farmer**

516 Main St.  
PO Box 30  
Webster, SD 57274  
Phone (605) 345-3356  
www.reporterandfarmer.com

### **Waubay Clipper**

122 North Main St.  
PO Box 47  
Waubay, SD 57273  
Phone (605) 947-4501  
clpjoint@itctel.com

## PHOTOGRAPHY

### **Now & Forever Photography**

Main St.  
Webster, SD 57274  
Phone (605) 345-4187

### **Tailfeather Productions Photography**

by Stacey Williams Dunse  
615 Main St.  
Webster, SD 57274  
Phone (605) 345-2550  
tailfeatherproductions.com

## PROFESSIONALS

### **G. Todd Garry, PA, accountant**

513 Main St.  
Webster, SD 57274  
Phone (605) 345-3639  
Fax (605) 345-3509

### **Delaney, Nielsen & Sannes, PC attorneys**

21 West 6th Ave.  
PO Box 615  
Webster, SD 57274  
Phone (605) 345-3321

### **Dan Smeins, attorney**

506 Main St.  
Webster, SD 57274  
Phone (605) 345-4875  
Fax (605) 345-4250  
E-mail: drslaw@itctel.com

# BUSINESS CATEGORY LISTING

## REAL ESTATE

### Dakota Properties Real Estate

13967 U.S. Highway 12  
Webster, SD 57274  
Phone (605) 345-3991  
Cell (605) 380-8240  
dakotaproperties.com

### Delaney & Sannes Real Estate

21 West 6th Ave.  
PO Box 615  
Webster, SD 57274  
Phone (605) 345-3321

### Larsen Realty

510 Main St.  
Webster, SD 57274  
Phone (605) 345-4062

## RENTALS/STORAGE

### Bristol Storage

14108 423rd Ave.  
Bristol, SD 57219  
(605) 492-3472  
clintduerre@hotmail.com

### E&K Mobile Home Park

720 East 8th St.  
Webster, SD 57274  
Phone (605) 345-4523  
(605) 881-0414

### Johnson Storage Rentals

520 E. 1st St.  
Webster, SD 57274  
Phone (605) 345-4149

### Pleasant View Apartments

1101 East 7th St.  
Webster, SD 57274  
Phone (605) 345-3181  
Fax (605) 345-3267  
E-mail: pleasant@itctel.com

### Schoenbeck Rentals

Apartments and houses  
Loren Schoenbeck  
Webster, SD 57274  
(605) 345-3745

### Snaza Rentals

Tanya and Lydel  
Webster, SD 57274  
345-3588

## RESTAURANTS

### A&W

Junction of Highways 12 & 25  
10 U.S. Highway 12  
Webster, SD 57274  
Phone (605) 345-4140

### Mr. Bill's

110 Main St.  
Pierpont, SD 57468  
Phone (605) 325-3314

### The New Frontier Steakhouse & Lounge

500 Main St.  
Webster, SD 57274  
Phone (605) 345-3759  
E-mail: steved@itctel.com

### Oscar's Bar & Grill

509 Main Street  
Roslyn, SD 57261  
Phone (605) 486-4780

### Pereboom's Cafe/ Boomer's Grill & Casino

Junction of Highways 12 & 25  
Webster, SD 57274  
Phone (605) 345-9986  
boomersoutback.com

### Pizza Hut

511 East Highway 12  
Webster, SD 57274  
Phone (605) 345-3383

### Purple Cow Ice Cream Parlor

30 U.S. Highway 12  
Waubay, SD 57273  
Phone (605) 947-4461

### Subway

1290 Main St. Suite 5  
Mike's Mini Mall  
Webster, SD 57274  
Phone (605) 345-4780

### Webster's Dakota Diner

508 Main St.  
Webster, SD 57274  
Phone (605) 345-4710

## SPORTING/MARINE

### Sportsmans Cove, LLC

30 W. U.S. Highway 12  
Webster, SD 57274  
Phone (605) 345-2468  
www.thesportsmanscove.net

### TLC Marine Service

611 E Highway 12  
Webster, SD 57274  
Phone (605) 345-7500

### Webster Marine LLC

Eden, Webster  
319 E. Taft Ave.  
Eden, SD 57232  
486-4060 or 486-4398

## UTILITIES

### ITC

### Interstate Telecommunications Cooperative, Inc.

14 East 7th Ave.  
Webster, SD 57274  
Phone (605) 345-4260  
Fax (605) 345-3708  
www.itc-web.com

### James Valley Telecommunications

235 E. 1st Ave.  
PO Box 260  
Groton, SD 57445  
Phone: 605-397-2323 or 800-556-6525  
jamesvalley.com

### Lake Region Electric Association, Inc.

PO Box 341  
Webster, SD 57274  
Phone (605) 345-3379 or  
800-657-5869

### Midcontinent Communications

3828 6th Ave. SE  
Aberdeen, SD 57401  
Phone (800) 888-1300

### NorthWestern Energy

Webster Office  
201 W. 5th Ave.  
Webster, SD 57274  
(800) 245-6977  
northwesternenergy.com

## VETERINARY SERVICE

### Webster Veterinary Clinic

1400 E. 7th St.  
Webster, SD 57274  
Phone (605) 345-4817

# Welcome new patients



When a health care need comes up, you need someone ready to respond. Begin that relationship now, so you're prepared if the unexpected happens. Our providers are accepting new patients and ready to make you feel welcomed and healthy.

To schedule an appointment, call  
Sanford Webster Clinic at (605) 345-4141.

[sanfordwebster.org](http://sanfordwebster.org)

**SANFORD**<sup>®</sup>  

---

Webster