

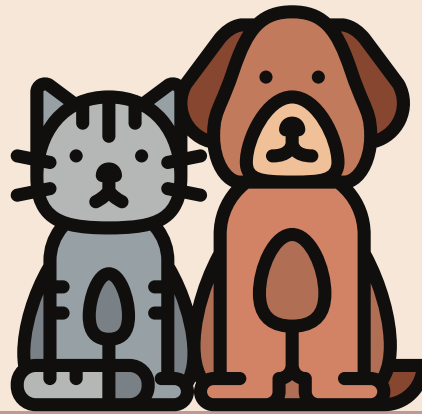
# HEARTWORM

## AWARENESS MONTH IS EVERY APRIL

Heartworms are foot-long worms that infest the heart, blood vessels, and lungs of our pets. They can cause severe damage to major organ systems, including lung disease and heart failure.

### MATURITY RATE

HEARTWORM MATURE INTO FULL-GROWN ADULTS IN ABOUT:



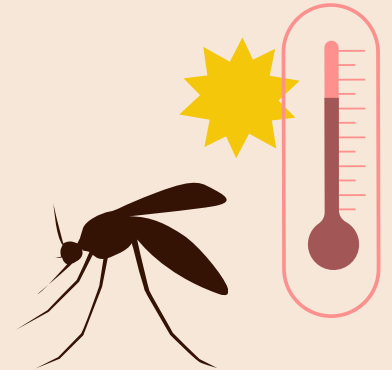
### TRANSMISSION

HEARTWORM ARE TRANSMITTED AS LARVAE TO MAMMAL BY MOSQUITOES, SO THEY ARE MORE PREVALENT IN WARMER SEASONS AND CLIMATES.

### LIFE SPAN OF HEARTWORMS

**2 - 3 YEARS**  
IN CATS

**5 - 7 YEARS**  
IN DOGS



MEDICATIONS USED TO TREAT HEARTWORM DO NOT WORK FOR CATS WHICH MAKES



### PREVENTION

EVEN MORE IMPORTANT FOR OUR FELINE FAMILY MEMBERS & FRIENDS. TALK TO YOUR VET FOR MORE INFORMATION.

### CLINICAL SIGNS OF HEARTWORM

#### IN CATS:

- COUGHING
- LOSS OF APPETITE
- WEIGHT LOSS
- FAINTING
- LABORED BREATHING
- RAPID BREATHING
- GAGGING
- VOMITING
- BLINDNESS
- DIFFICULTY WALKING
- SEIZURES
- ASTHMA-LIKE SYMPTOMS
- FLUID BUILD-UP IN ABDOMEN

#### IN DOGS:

- COUGHING
- LOSS OF APPETITE
- WEIGHT LOSS
- FAINTING
- LABORED BREATHING
- FATIGUE
- ENLARGED LIVER
- ENLARGED HEART
- CONGESTIVE HEART FAILURE
- ABNORMAL LUNG SOUNDS
- ABNORMAL HEART SOUNDS
- PALE GUMS
- DARK, BLOODY URINE
- FLUID BUILD-UP IN ABDOMEN