

Tails of Hope  *INC. WPA*

HALLOWEEN

PET SAFETY TIPS

MORE DETAILS ON PAGE 2

#1



NO SWEETS FOR YOUR SWEETIE

#4



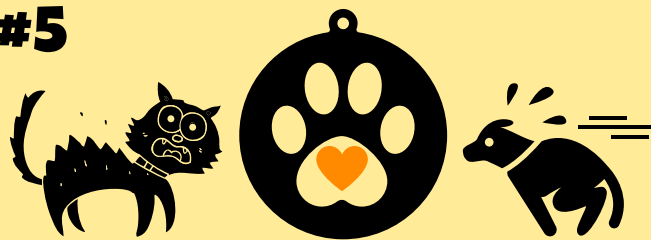
NO TRICK OR TREATER GREETERS

#2



KEEP PUMPKIN AWAY FROM THE PUMPKIN

#5



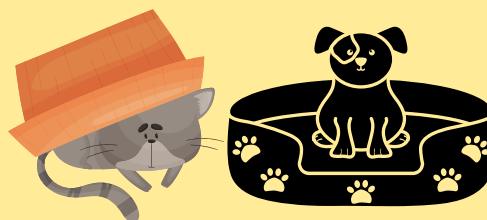
SAFETY FIRST - I.D. REQUIRED

#3



COSTUMES ARE OPTIONAL

#6



MAKE A SAFE HAVEN



Tails of Hope  *INC. WPA*

HALLOWEEN

PET SAFETY TIPS

CONTINUED FROM PAGE 1

#1 NO SWEETS FOR YOUR SWEETIE. Keep your pets away from candy (especially chocolate). Avoid placing party plates and food on the ground. Throw wrappers away properly. Contact your veterinarian right away if you suspect your pet ingested something dangerous. For a fun and festive treat for your pet, visit your local pet store for a variety of safe options.

#2 KEEP PUMPKIN AWAY FROM THE PUMPKIN. Decorative plants can be toxic and candle-lit jack-o-lanterns are fire hazards if flipped over. Keep your furbabies in mind when choosing decorations for the home you share with them.

#3 COSTUMES ARE OPTIONAL. Never force an unwanted costume on a pet. Trying to put costumes on your pet can sometimes amplify their stress and discomfort. In addition, costumes that obstruct the eyes, nose or mouth are extremely dangerous and small parts or pieces may be choking hazards. Pets may have allergies to materials or fabric treatments. If your pet does wear a costume, a leash must always be part of outfit. If you'll be outside, find a reflective costume and leash.

#4 TRICK OR TREATER GREETERS. The front door is a high traffic area. Doorbells and knocks can upset and scare even the friendliest pets. If your pet is not accustomed to these noises, set your candy station up outside your door and greet Trick or Treaters outside and keep your pets indoors.

#5 SAFETY FIRST - I.D. REQUIRED. Many pets get spooked, escape, and get lost on holidays. Ensure your pet is microchipped and the chip is registered with current information, and be sure your pet has proper tags for easy identification. Register your pet into a national database for free at petcolovelost.org Keep doors and windows secure. Be careful when guests enter/exit to prevent an escape.

#6 SAFETY FIRST - I.D. REQUIRED. Many pets are happier in a quiet, comfortable space away from the holiday activities. Your pet likely already has a favorite spot in your home. When Halloween comes around, you may want to lead your pet to spend his time there. The spot is comfortable, so it could help your pet stay calm. You can also give him a treat and a favorite chew toy for a dog, as chewing helps dogs relieve stress. Plus, chewing on an appropriate toy will keep him preoccupied while trick-or-treaters occupy your welcome mat. Prevent guests from entering the safe haven of your pet. Check on them from time-to-time to give some extra reassurance.