

# WHAT IS THE SPAY & NEUTER ANGEL PROGRAM (SNAP)?

In order to ensure that the essential veterinary care services of Spay or Neuter and Rabies Vaccination are made reasonably available to the household pets of people in our area, a Sliding Scale Fee based on household size\* and income is offered to qualified TOH patients and their guardians or families. Military discount\*\*available for active or inactive service members.

\*Household size is all members of the household who are related and/or pooling resources. Members of a household who are unrelated and do not share income are considered separate households (ex: college roommates paying separate rent/bills.)

\*\* Military service members with proper ID receive a discount of 25%. Discount cannot be combined with other program discounts.



QUESTIONS?  
INTERESTED IN APPLYING?

## CONTACT US



Phone: 724-346-4673 (HOPE)  
Fax: 724-346-4674



[contactus@tailsofhopewpa.org](mailto:contactus@tailsofhopewpa.org)



2450 Hoezle Road  
Hermitage, PA  
16148

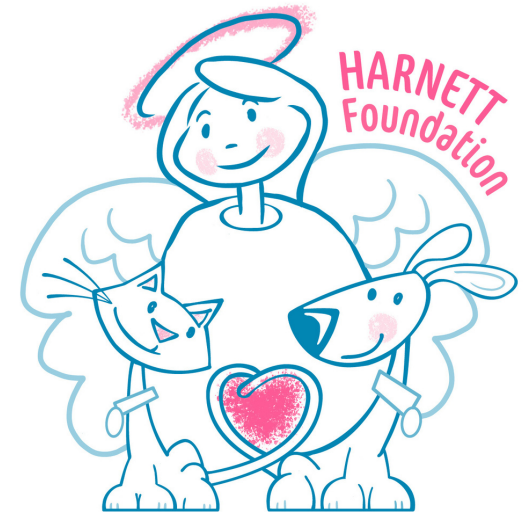


[facebook.com/tailsofhopepa/](https://facebook.com/tailsofhopepa/)



[tailsofhopewpa.org](http://tailsofhopewpa.org)

REV 11/2021



Spay & Neuter Angel Program

at

**Tails of Hope**  
INC. WPA

**Sliding Scale  
Fee Program**

[tailsofhopewpa.org](http://tailsofhopewpa.org)

# SPAY & NEUTER ANGEL PROGRAM (SNAP) SLIDING SCALE FEE CHART

Household Size	100% Poverty & Below				101% - 200% Poverty Partial Charge				>200% Poverty & Above		
	No Charge				25% of Charge		50% of Charge		75% of Charge		Full Charge
	FROM	TO	FROM	TO	FROM	TO	FROM	TO	FROM	TO	
1	0	\$12,880	\$12,881	\$19,320	\$19,321	\$22,540	\$22,541	\$25,760	\$25,760	>\$25,760	
2	0	\$17,420	\$17,421	\$26,130	\$26,131	\$30,485	\$30,486	\$34,840	\$34,840	>\$34,840	
3	0	\$21,960	\$21,961	\$32,940	\$32,941	\$38,430	\$38,431	\$43,920	\$43,920	>\$43,920	
4	0	\$26,500	\$26,501	\$39,750	\$39,751	\$46,375	\$46,376	\$53,000	\$53,000	>\$53,000	
5	0	\$31,040	\$31,041	\$46,560	\$46,561	\$54,320	\$54,321	\$62,080	\$62,080	>\$62,080	
6	0	\$35,580	\$35,581	\$53,370	\$53,371	\$62,265	\$62,266	\$71,160	\$71,160	>\$71,160	
7	0	\$40,120	\$40,121	\$60,180	\$60,181	\$70,210	\$70,211	\$80,240	\$80,240	>\$80,240	
8	0	\$44,660	\$44,661	\$66,900	\$66,901	\$78,155	\$78,156	\$89,320	\$89,320	>\$89,320	

Note: For households with more than 8 persons, add \$4,540 for each additional person. Sliding Scale subject to change without notice.

## IS THE SNAP PROGRAM FOR ME?

To determine if the program may pertain to you, follow these steps:

1. Using the Spay & Neuter Angel Program (SNAP) Sliding Scale Fee Chart\* to the left, find your household size using the left hand column.
2. Next, find your income on that line.
3. Last, follow the income range column upward to the point that tells you whether you may receive free-of-charge services or a designated percentage of the charges.

\*Note: This chart is a primary estimate that should provide enough information to determine whether you want to submit an application or not.



## ABOUT TAILS OF HOPE (TOH)

Tails of Hope at The Thomas M. O'Brien Animal Care Center, opened in 2017 as a 501 (c)(3). TOH exists to address the Root Cause of pet overpopulation and the reason many animals are homeless or enter shelters in the first place. TOH serves as an active member of a lifesaving community offering low- to no-cost Spay/Neuter Programs, TNR Programs, Vaccine Programs, and supporting animal welfare organizations while bringing awareness to animals in need.

## ABOUT THE GLENN & JEAN HARNETT PRIVATE CHARITABLE FOUNDATION

The Glenn & Jean Harnett Private Charitable Foundation is a 501(c)(3) created from the assets of a trust fund built by Glenn & Jean Harnett formerly of Mercer County Pennsylvania. The foundation makes gifts in their memory to assist animal welfare projects and the churches beloved by both Glenn and Jean in both Mercer County Pennsylvania and Trumbull County Ohio.