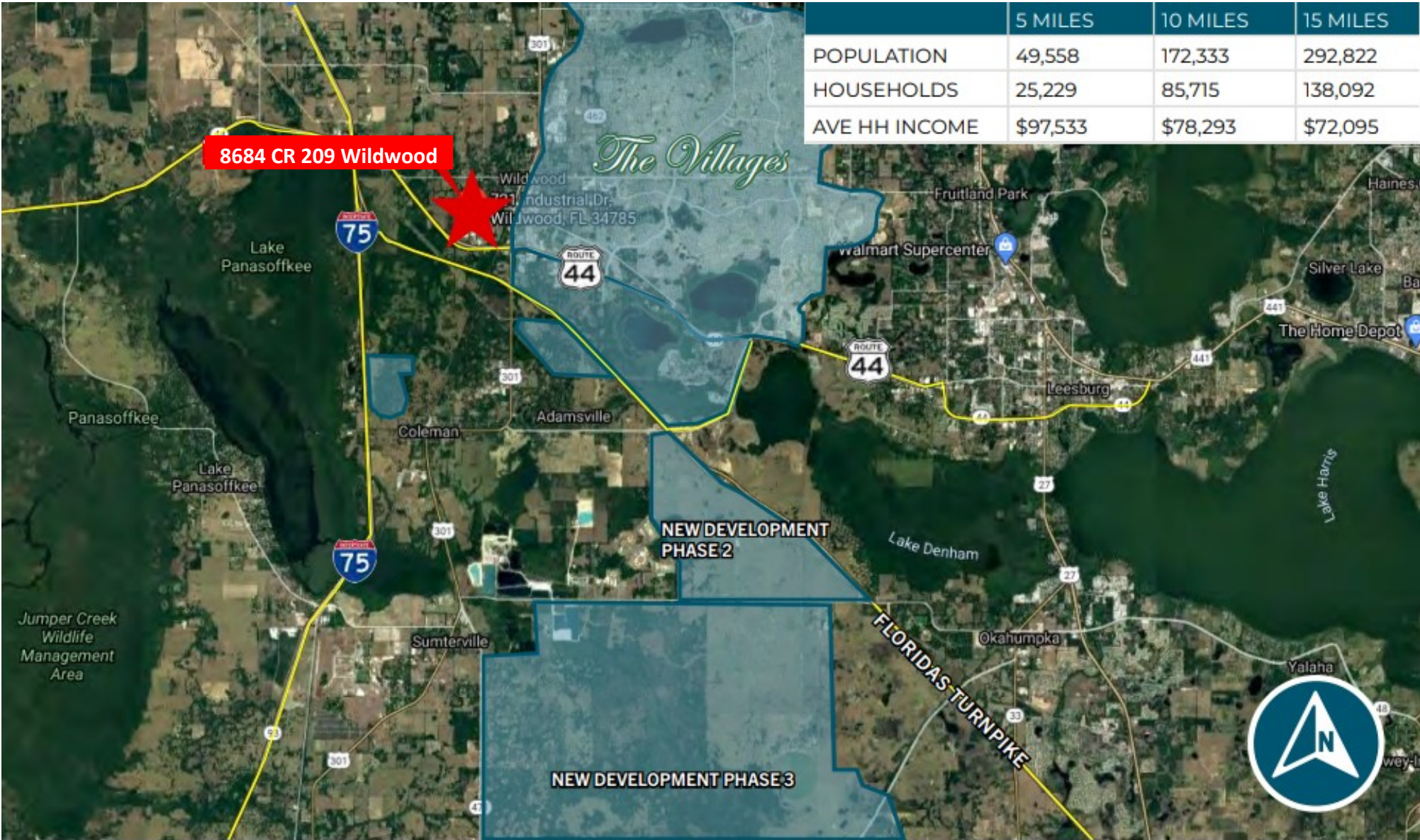
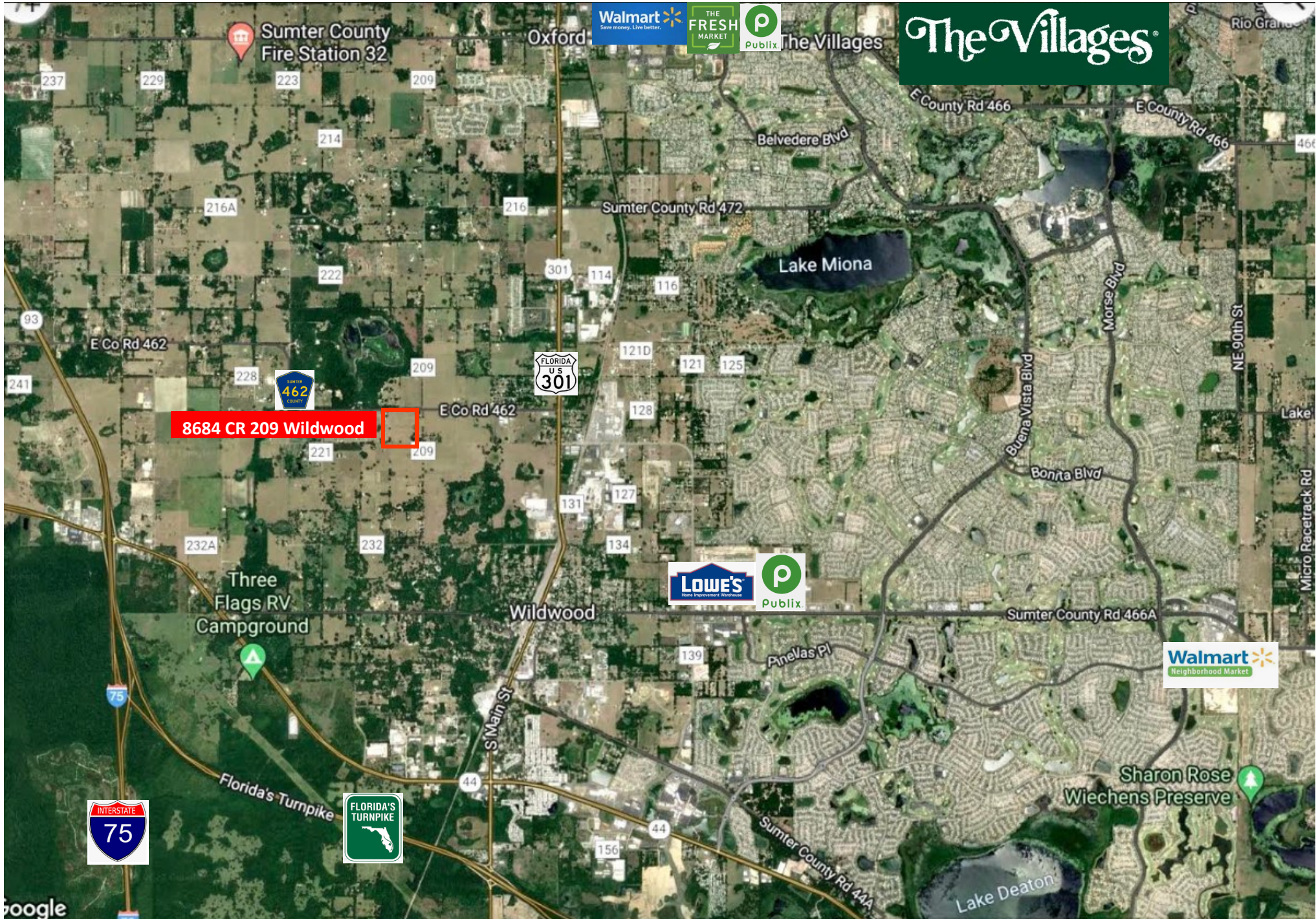


Gillio Developments Inc. Communities

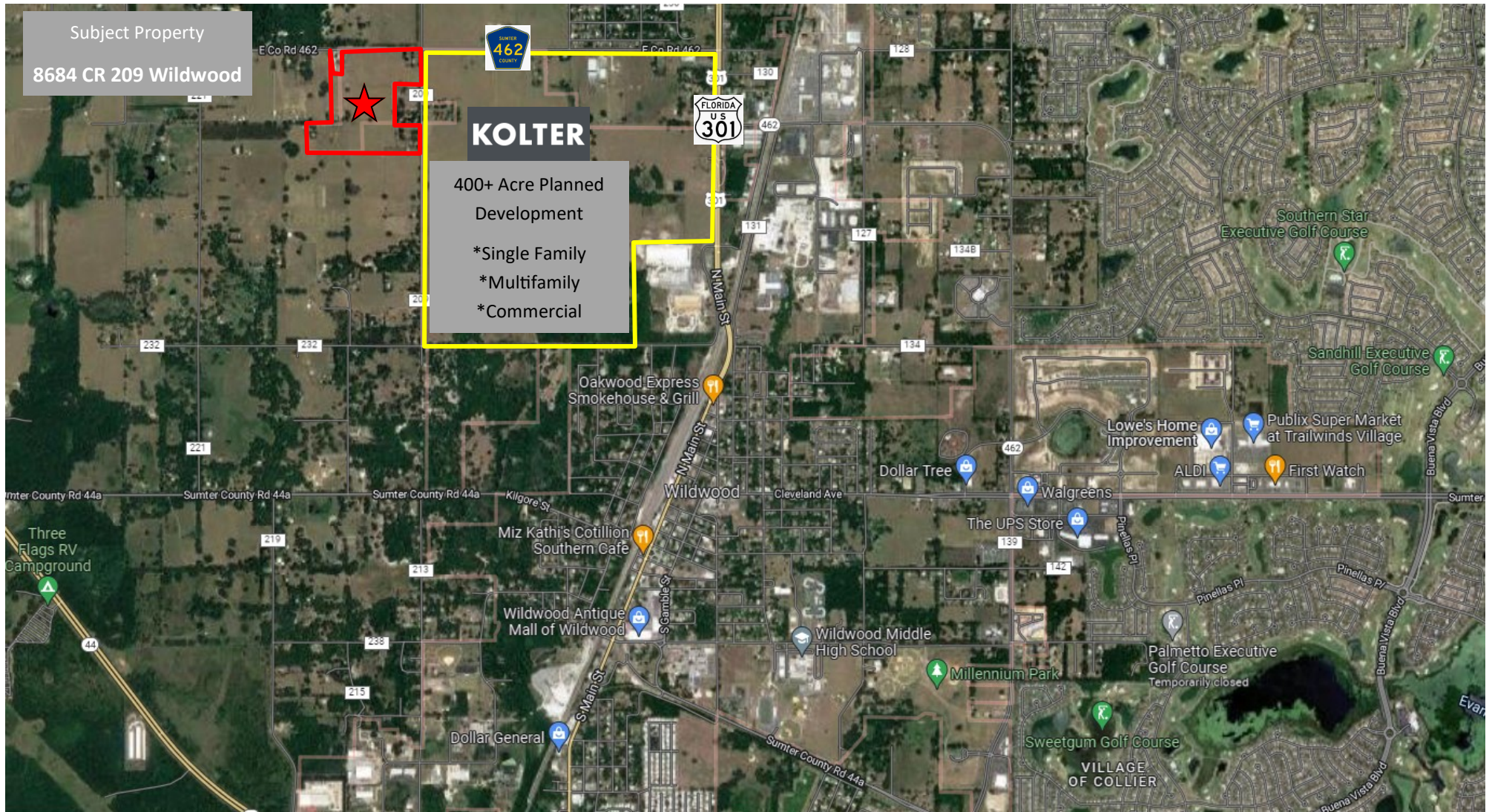




8684 CR 209 Wildwood

**KOLTER**

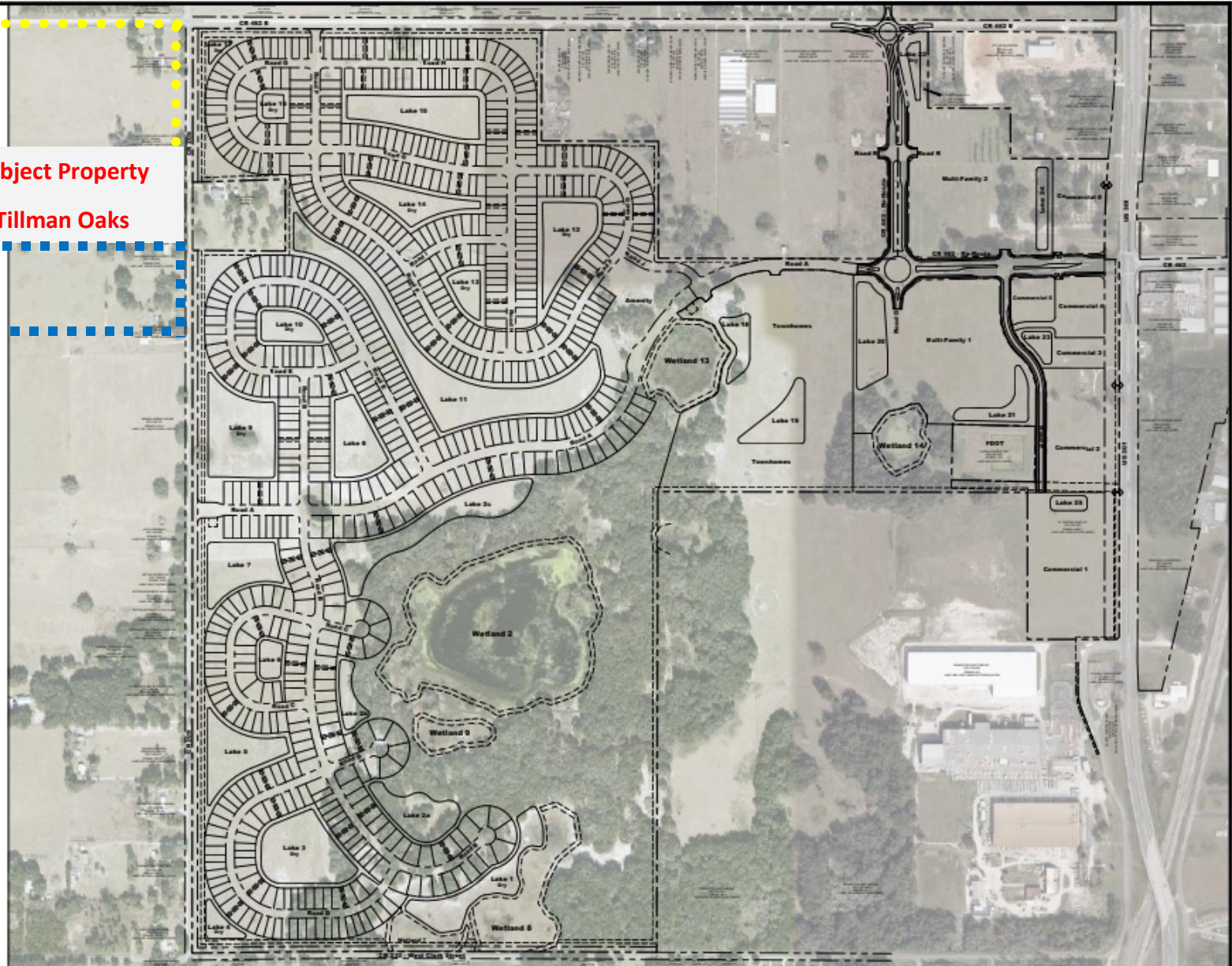
- *Single Family
- *Multifamily
- *Commercial



Subject Property
Tillman Oaks



0 250 500 750
GRAPHIC SCALE 1"=250'



MORRIS ENGINEERING AND CONSULTING, LLC
Civil Engineering and Land Development Consulting
697 Professional Parkway East, Suite 200, Silverwood Ranch, Florida 32187 • P.A. 2070 • 321.461.4000 • www.morrisengineering.com

AERIAL SITE MAP
TWISTED OAKS
CITY OF WILDWOOD, FLORIDA

DATE: 04/10/2022
PROJECT: 19-070-003
DRAWN: [blank]
CHECKED: [blank]
SCALE: [blank]
SHEET: 3 OF 3
BY: [blank]

WITTEN & WITTEN
FL. LICENSE NO. 68434

Gillio Developments Inc. Communities

Sumter County Rd 462 E

E Co Rd 462

Subject Property

Tillman Oaks

8684 CR 209 Wildwood

KOLTER

Sumter County Rd 209

TILLMAN OAKS

462

20' buffer / 15' utility easement

20' buffer / 15' utility easement



200 SFR

128 TOWNHOMES
24x120

TILLMAN OAKS

607

