

01-26-2024

# Hampton Place

Contact **R. Scott Carey** for more information

PHONE: 218-979-6099 OR 218-233-3630

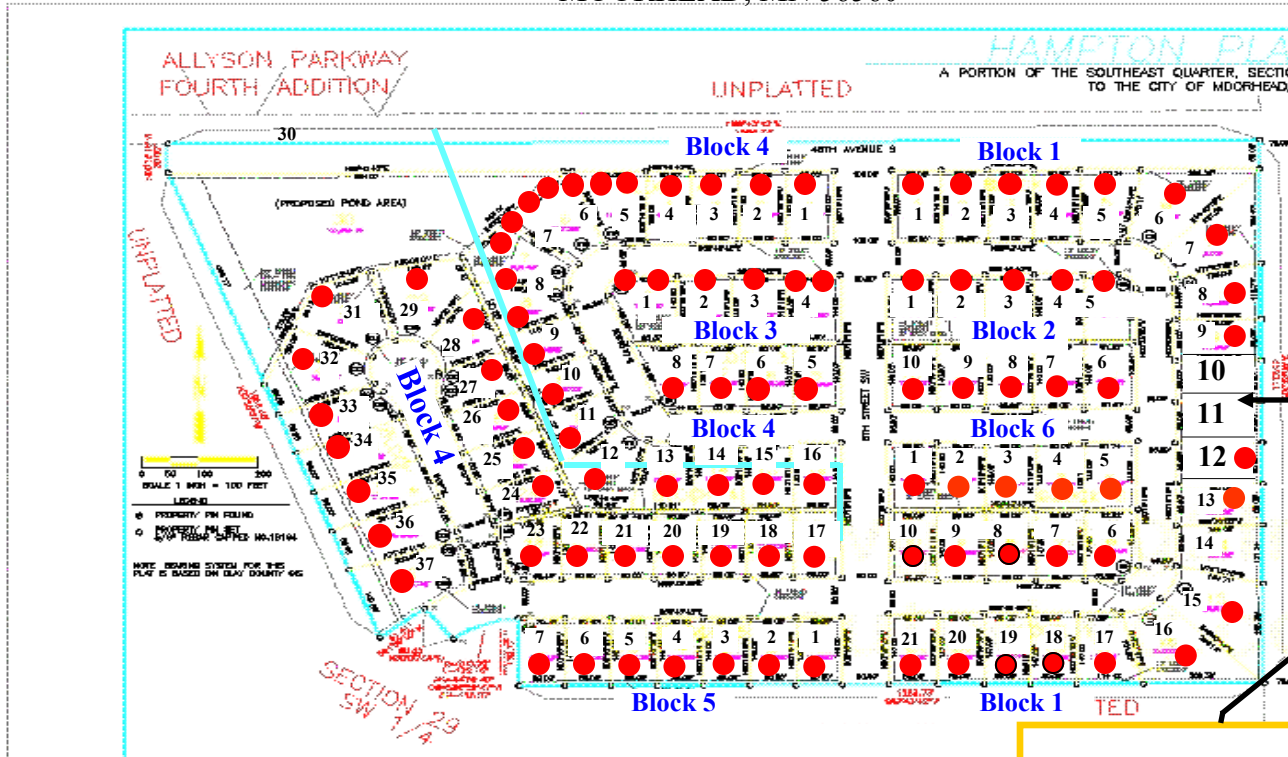
EMAIL: [scott@rscareyland.com](mailto:scott@rscareyland.com)

OFFICE: 1615 SE Main Avenue  
MOORHEAD, MN 56560

BLOCK 1

BLOCK 2

Lot 1	SOLD	Lot 1	SOLD	Lot 4	SOLD	Lot 27	SOLD	Lot 4	SOLD
Lot 2	SOLD	Lot 2	SOLD	Lot 5	SOLD	Lot 28	SOLD	Lot 5	SOLD
Lot 3	SOLD	Lot 3	SOLD	Lot 6	SOLD	Lot 29	SOLD	Lot 6	SOLD
Lot 4	SOLD	Lot 4	SOLD	Lot 7	SOLD	Lot 30	POND	Lot 7	SOLD
Lot 5	SOLD	Lot 5	SOLD	Lot 8	SOLD	Lot 31	SOLD	Lot 8	SOLD
Lot 6	SOLD	Lot 6	SOLD	Lot 9	SOLD	Lot 32	SOLD		
Lot 7	SOLD	Lot 7	SOLD	Lot 10	SOLD	Lot 33	SOLD	Lot 9	SOLD
Lot 8	SOLD	Lot 8	SOLD	Lot 11	SOLD	Lot 34	SOLD	Lot 10	SOLD
Lot 9	SOLD	Lot 9	SOLD	Lot 12	SOLD	Lot 35	SOLD		
Lot 10	\$72,008	Lot 10	SOLD	Lot 13	SOLD	Lot 36	SOLD		
Lot 11	\$72,008	BLOCK 3		Lot 14	SOLD	Lot 37	SOLD		
Lot 12	SOLD	Lot 1	SOLD	Lot 15	SOLD	BLOCK 5			
Lot 13	SOLD	Lot 2	SOLD	Lot 16	SOLD	Lot 1	SOLD		
Lot 14	\$74,692	Lot 3	SOLD	Lot 17	SOLD	Lot 2	SOLD		
Lot 15	SOLD	Lot 4	SOLD	Lot 18	SOLD	Lot 3	SOLD		
Lot 16	SOLD	Lot 5	SOLD	Lot 19	SOLD	Lot 4	SOLD		
Lot 17	SOLD	Lot 6	SOLD	Lot 20	SOLD	Lot 5	SOLD		
Lot 18	SOLD	Lot 7	SOLD	Lot 21	SOLD	Lot 6	SOLD		
Lot 19	SOLD	Lot 8	SOLD	Lot 22	SOLD	Lot 7	SOLD		
Lot 20	SOLD	BLOCK 4		Lot 23	SOLD	BLOCK 6			
Lot 21	SOLD	Lot 1	SOLD	Lot 24	SOLD	Lot 1	SOLD		
		Lot 2	SOLD	Lot 25	SOLD	Lot 2	SOLD		
		Lot 3	SOLD	Lot 26	SOLD	Lot 3	SOLD		



● SOLD  
● Contractor  
● Model  
 CALL FOR DETAILS!

- ◆ Architectural Control Plan required with 2 sets of plans, elevation, and plat..
- ◆ General taxes & special taxes due in 2024 paid by purchaser.
- ◆ Prices subject to change without notice.
- ◆ \$295 Mailbox Fee.
- ◆ **EDIT NOTICE! Lot availability & prices** may have been altered by someone not under the Direction of R.S. Carey Land Co. Please verify these prices and availability with R. S. Carey Land Co. before making a decision.

[www.rscareyland.com](http://www.rscareyland.com)