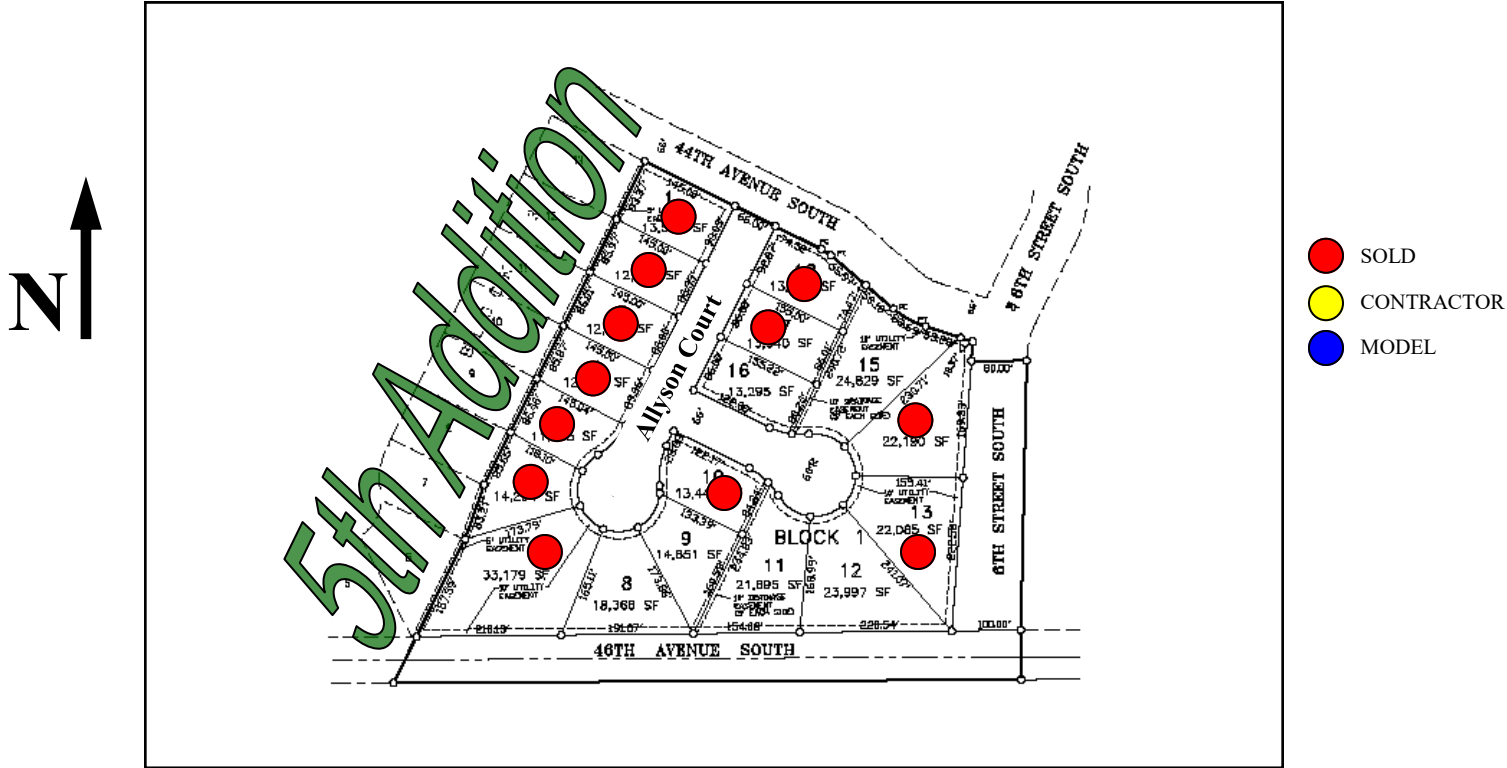


# Allyson Parkway



## Block 1

<b>Lot 1</b>	<b>SOLD</b>	<b>Lot 10</b>	<b>SOLD</b>
<b>Lot 2</b>	<b>SOLD</b>	Lot 11	\$136,195
<b>Lot 3</b>	<b>SOLD</b>	Lot 12	\$144,299
<b>Lot 4</b>	<b>SOLD</b>	<b>Lot 13</b>	<b>SOLD</b>
<b>Lot 5</b>	<b>SOLD</b>	<b>Lot 14</b>	<b>SOLD</b>
<b>Lot 6</b>	<b>SOLD</b>	Lot 15	\$144,564
<b>Lot 7</b>	<b>SOLD</b>	Lot 16	\$96,898
Lot 8	\$128,049	<b>Lot 17</b>	<b>SOLD</b>
Lot 9	\$117,845	<b>Lot 18</b>	<b>SOLD</b>

**For More Information Contact:**

**R. Scott Carey**  
 218-979-6099  
 or  
 218-233-3630  
 scott@rscareyland.com

**Office:**  
**1615 SE Main Ave**  
**Moorhead, MN 56560**

- Future Neighborhood Association Fee \$50/year.
- General & Special Taxes of record due in 2021 paid by purchaser.
- **Prices subject to change without notice.**
- Mailboxes to be determined by developer (approx. \$295).
- Architectural control—2 sets of blueprints, elevation, and plat required.
- Developer approved height of foundation.
- **EDIT NOTICE! Lot availability & prices** may have been altered by someone not under the direction of R.S. Carey Land Co. Please verify these prices availability with R. S. Carey Land Co. before making a decision.