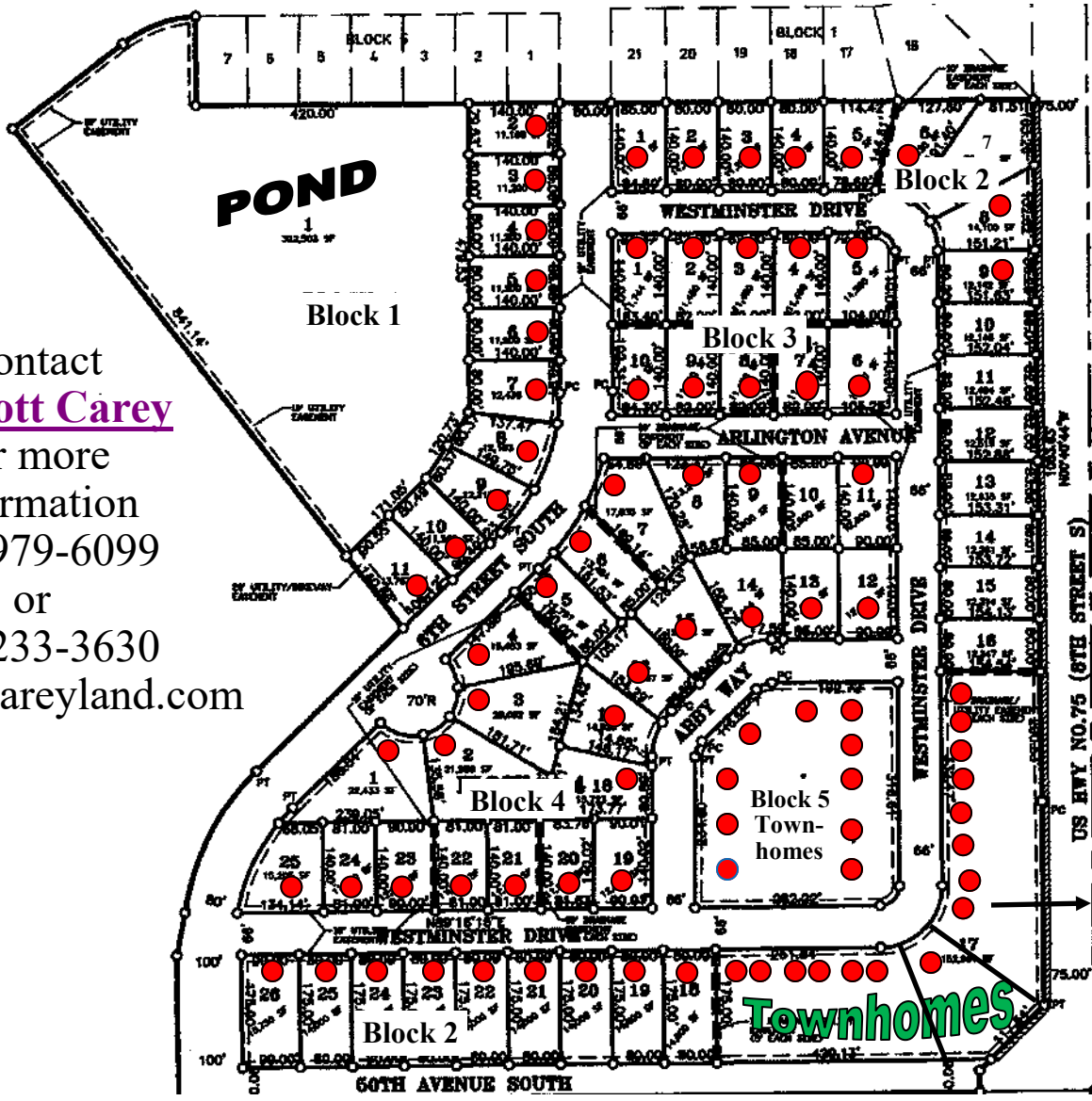


Hampton Place 2nd Addition

04-22-26



Contact
R. Scott Carey
for more
information
218-979-6099
or
218-233-3630
scott@rscareyland.com

| BLOCK 1 | | BLOCK 2 | | BLOCK 3 | | BLOCK 4 | |
|---------|-----------|---------|-----------|---------|------|---------|----------|
| Lot 1 | POND | Lot 8 | SOLD | Lot 1 | SOLD | Lot 9 | SOLD |
| Lot 2 | SOLD | Lot 9 | SOLD | Lot 2 | SOLD | Lot 10 | \$102092 |
| Lot 3 | SOLD | Lot 10 | \$86,432 | Lot 3 | SOLD | Lot 11 | SOLD |
| Lot 4 | SOLD | Lot 11 | \$86,452 | Lot 4 | SOLD | Lot 12 | SOLD |
| Lot 5 | SOLD | Lot 12 | \$86,480 | Lot 5 | SOLD | Lot 13 | SOLD |
| Lot 6 | SOLD | Lot 13 | \$86,480 | Lot 6 | SOLD | Lot 14 | SOLD |
| Lot 7 | SOLD | Lot 14 | \$86,442 | Lot 7 | SOLD | Lot 15 | SOLD |
| Lot 8 | SOLD | Lot 15 | \$86,444 | Lot 8 | SOLD | Lot 16 | SOLD |
| Lot 9 | SOLD | Lot 16 | \$86,444 | Lot 9 | SOLD | Lot 17 | SOLD |
| Lot 10 | SOLD | Lot 17 | TOWNHOMES | Lot 10 | SOLD | Lot 18 | SOLD |
| | | Lot 18 | SOLD | BLOCK 4 | | Lot 19 | SOLD |
| | | Lot 19 | SOLD | Lot 1 | SOLD | Lot 20 | SOLD |
| Lot 1 | SOLD | Lot 20 | SOLD | Lot 2 | SOLD | Lot 21 | SOLD |
| Lot 2 | SOLD | Lot 21 | SOLD | Lot 3 | SOLD | Lot 22 | SOLD |
| Lot 3 | SOLD | Lot 22 | SOLD | Lot 4 | SOLD | Lot 23 | SOLD |
| Lot 4 | SOLD | Lot 23 | SOLD | Lot 5 | SOLD | Lot 24 | SOLD |
| Lot 5 | SOLD | Lot 24 | SOLD | Lot 6 | SOLD | Lot 25 | SOLD |
| Lot 6 | SOLD | Lot 25 | SOLD | Lot 7 | SOLD | | |
| Lot 7 | \$105,382 | Lot 26 | SOLD | Lot 8 | SOLD | BLOCK 5 | |
| | | | | | | SOLD! | |

- SOLD
- CONTRACTOR
- MODEL - CALL FOR DETAILS!

- Architectural Control Plan required with 2 sets of plans, elevation, and plat.
- General taxes & special taxes due in 2026 paid by purchaser.
- Prices subject to change without notice.
- \$295.00 Mailbox Fee
- Developer approved height of foundation.
- **EDIT NOTICE!** Lot availability & prices may have been altered by someone not under the direction of R.S. Carey Land Co. Please verify these prices and availability with R. S. Carey Land Co. before making a decision.

OFFICE:
1615 SE Main Ave
Moorhead, MN 56560