



CISCO CERTIFIED  
INTERNETWORK  
EXPERT “CCIE” –  
SERVICE  
PROVIDER  
PROGRAMME  
2022/2023

*The Cisco Certified Internetwork Expert (CCIE) certification is the most challenging and prestigious of all existing networking certifications. It has received numerous awards and certainly has built a reputation as one of the most difficult certifications to earn in all the technology world. Having a CCIE certification opens doors professionally typically results in higher pay and looks great on a resume.*



### Our Ideology

To Revitalise our “Network Engineers” into true industry Experts.

### Benefits of Joining Christ College

- Training conducted by CCIE’s
- One-to-one support
- Small class sizes
- Complete courseware
- Gain industry-recognized Cisco certifications
- 100% Hands-On Training on Networking Devices
- Our Team has trained 1000+ CCIE’s Worldwide

## Welcome to Christ College London!

### CCIE – Service Provider Training Programme.

CCIE Service Provider version 5.0 certification Programme focuses on providing the skills and knowledge necessary for network engineers, system analysts, and support engineers, who bring the knowledge and skill to build an extensible Service Provider infrastructure to deliver rich managed services. Candidates preparing for CCIE Service Provider certification possess thorough knowledge in IP core, aggregation/edge, and remote access technologies, Layer 2 and 3 VPNs, plus managed services traversing an IP core network.

This course is conducted by instructors who hold multiple CCIE Certifications, you will receive many hours of in-depth lecture for 7 days. Our instructors will provide detailed explanation and facilitate group discussion. Our team has over 20 years of experience in the IT field providing Network Consulting and training for companies like Boeing, Verizon, Northrop Grumman, Lockheed Martin, Cisco, Microsoft and many more.

We ensure a world-class learning environment, including instructors, technical and administrative support, classrooms, and state-of-the-art lab facilities. With an unbeaten combination of the best faculty, the best programmes, and the best network operation center, we can help you improve your skills in a way no one else can.

## CCIE – SERVICE PROVIDER TRAINING PROGRAMME DURATION:

- The duration of this hands-on Instructor-led boot camp is 7 days

## COURSE DESIGN

### EXAM FOCUSED TRAINING

You will learn the advance technologies, exam tips and tricks, Cisco's testing techniques, and assess your strengths and weaknesses by testing your knowledge on each exam topic. Every day you will be challenged with many hours of extremely complex lab scenarios that run late into the evening, reinforcing the material you have covered earlier in the day. On day seven, you will be work through a difficult full-scale super lab that will put your ability to the test.



Upon completion of this Programme Network Engineers and consultants can design, implement, configure, and troubleshoot Enterprise Network Infrastructures for businesses and organizations

### Our Unique Methodology

You will have access to all the latest Cisco equipment used in the real exam. Throughout the course you will have access to equipment matching the CCIE Enterprise Lab exam blueprint. By immersing yourself in an environment without the distraction of work and personal obligations, you will maintain the uninterrupted focus required to benefit from the volume of material concentrated into one week.

### Delivery

- Instructor-led Classroom Based Training
- Instructor-led Online Training

### Why Us

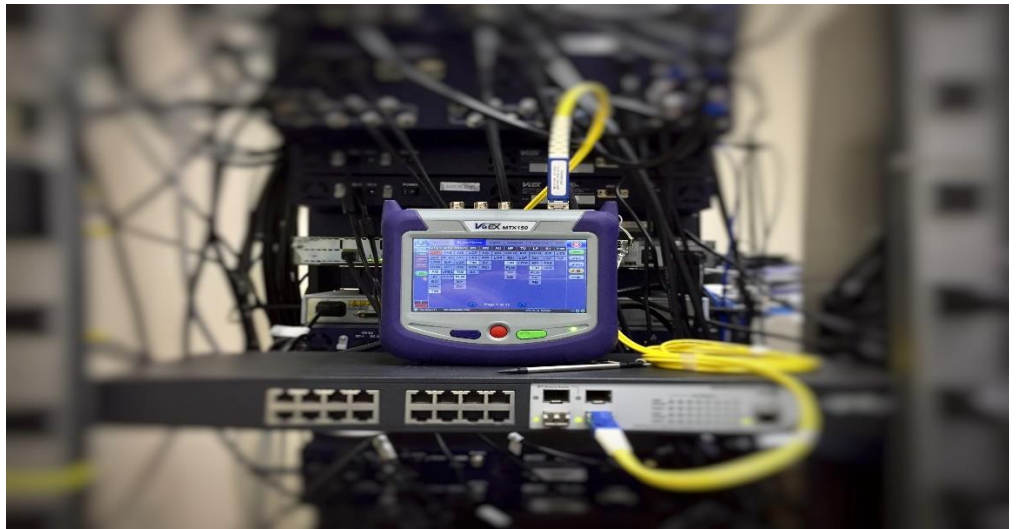
- Curriculum authored & supervised by a team of multiple CCIE Holder Instructors.
- Training provided by the elite group of CCIE Instructors/Consultants with a proven track record and industry experience
- Trained more than 1000 CISCO Certified Internetwork Experts Globally.
- Complete Courseware – included
- Recordings of Instructor-led sessions – Included

### Why Christ College London

We are proud to offer a complete hands-on approach to help the candidates achieve their objectives. With our bespoke training programmes, we can pass on the required practical skills combined with individual and group lab projects to ensure that you'll leave with the confidence and knowledge necessary to pass your CCIE Lab Exam.

## Overview

CCIE Service Provider Instructor led Lab Boot Camp is an intense seven-day course, designed for CCIE Service Provider candidates. This course provides the knowledge needed to achieve the CCIE Service Provider certification. Over seven days, your existing knowledge will be solidified, any weaknesses exposed, and you will gain vital test-taking strategies. “The Cisco CCIE Service Provider (v5.0) Lab Exam is an eight-hour, hands-on exam that requires a candidate to plan, design, implement, operate, and optimize dual stack solutions (IPv4 and IPv6) of complex service provider networks.



## “IGNITE YOUR GENIUS”

The exam is closed book and no outside reference materials are allowed.

- 1.1 Deployment modes on Cisco ASA and Cisco FTD
- 1.2 Firewall features on Cisco ASA and Cisco FTD
- 1.3 Security features on Cisco IOS/IOS-XE
- 1.4 Cisco Firepower Management Center (FMC) features
- 1.5 NGIPS deployment modes
- 1.6 Next Generation Firewall (NGFW) features
- 1.7 Detect, and mitigate common types of attacks
- 1.8 Clustering/HA features on Cisco ASA and Cisco FTD
- 1.9 Policies and rules for traffic control on Cisco ASA and Cisco FTD
- 1.10 Routing protocols security on Cisco IOS, Cisco ASA and Cisco FTD

### Our Focus

The emphasis of our bespoke training is on the hands-on lab on real networking devices. We have a high-tech state-of-the-art lab that provides maximum exposure to candidates of the technologies they would be using in their future jobs as Network Engineers.

**It's time to transform your career**

Don't just pass an exam, become an expert, and always stay up to date.

## “Believe you can & you’re halfway there. (Theodore Roosevelt)”

- 2.1 AnyConnect client-based remote access VPN technologies on Cisco ASA, Cisco FTD, and Cisco Routers.
- 2.2 Cisco IOS CA for VPN authentication
- 2.3 FlexVPN, DMVPN, and IPsec L2L Tunnels
- 2.4 Uplink and downlink MACsec (802.1AE)
- 2.5 VPN high availability using
  - 3.1 Device hardening techniques and control plane protection methods
  - 3.2 Management plane protection techniques
  - 4.1 ISE scalability using multiple nodes and personas.
  - 4.2 Cisco switches and Cisco Wireless LAN Controllers
  - 5.1 AMP for networks, AMP for endpoints, and AMP for content security (ESA, and WSA)

## Crack the Cisco Exams & Become a Certified Network Engineer!



## Our next area of focus – We break it & You fix it.

There are three main steps in troubleshooting:

**Identify the problem** – The first part of troubleshooting deals with identifying what problem you are trying to solve. Is it a connectivity problem, a network slowdown, route flapping, etc. Having a baseline for expected response time, route paths, etc is key to knowing if the problem you are trying to identify is a real problem or a perceived problem by users.

**Diagnose the problem** – Once the problem is identified, it is time to gather information, analyse the information gathered and come up with a proposed solution.

**Solve the problem** – Finally implement the proposed solution and test if it worked. If it did, problem solved. If not, go back to step 2 and gather more information then analyse and propose a different solution.

### Christ College London

Head Office:  
Christ College London  
10-16 Tiller Road,  
London. E14 8PX  
United Kingdom.  
Tel: +44 (0)203 011 3088

### Christ College Abuja Nigeria

(A Subsidiary of Christ College  
London) No.20 Idaho Mohammed  
Street, Gudu, Behind Emerald Court,  
Gudu, Abuja. FCT.  
Nigeria  
Tel Nigeria: +234 703 497 3960  
Tel Head Office: +44(0)203 011 3088

For more information visit our  
website:

<https://christcollegelondon.co.uk/>