



GITP – GLOBAL INTERNETWORKING TRAINING PROGRAMME 2022/2023

Changes happen. As they do so frequently in the computer world, people must adapt and develop new skills to remain successful. Christ College London was established to help people deal with changes and acquire the knowledge and skills that are needed to compete in the 21st century.



Our Ideology

To revitalise our “aspirant network engineers” into true industry professionals.

Benefits of Joining Christ College

- No experience necessary
- One-to-one support
- Small class sizes
- Complete courseware
- Gain industry-recognized Cisco certifications
- 100% Hands-On Training on Networking Devices
- CV Makeover, cover letter & technical training references provided

Welcome to Christ College London!

GITP – Global Internetworking Training Programme.

Christ College London is one of the leading institutions providing the most complete and up-to-date certifications and job-related training available. By combining the finest instructor-led lectures with the latest Technological trends in content development and delivery, Christ College has recreated the classroom experience for those students that are not able to fit a class schedule into their busy lifestyle.

Our instructors are not people who are mere academics but are teaching experts who teach and draw on their rich real-time experience to help students understand the practical issues and their solutions.

We ensure a world-class learning environment, including instructors, technical and administrative support, classrooms, and state-of-the-art lab facilities. With an unbeaten combination of the best faculty, the best programmes, and the best network operation center, we can help you improve your skills in a way no one else can.

GITP – GLOBAL INTERNETWORKING TRAINING PROGRAMME INCLUDES:

- CCL Network Associate Programme **LEVEL 1** (Duration: 30 Weeks)
- CCL Network Professional Programme **LEVEL 2** (Duration: 24 Weeks)

LEVEL 1

CCL NETWORK ASSOCIATE PROGRAMME – DURATION 30 WEEKS

Programme includes the below courses:

- Bespoke Course 1: Introduction to Internetworking Concepts – 4 Weeks
- Bespoke Course 2: Interconnecting Cisco Networking Devices – 4 Weeks
- *Bespoke Course 3: CCNA – Consolidated Course (14 Weeks Programme)*
- Bespoke Course 4: Project-Based Advanced Level Troubleshooting Course (4 Weeks)
- Bespoke Course 5: Introduction to Internetwork Security and Configuring security levels, DHCP, DNS, Routing, and SSH on ASA Firewalls. (4 weeks)



Upon completion of this Programme Aspirant Network Engineers can design, implement, configure, and troubleshoot routed and switched network infrastructures involving LAN and WAN services for businesses and organizations

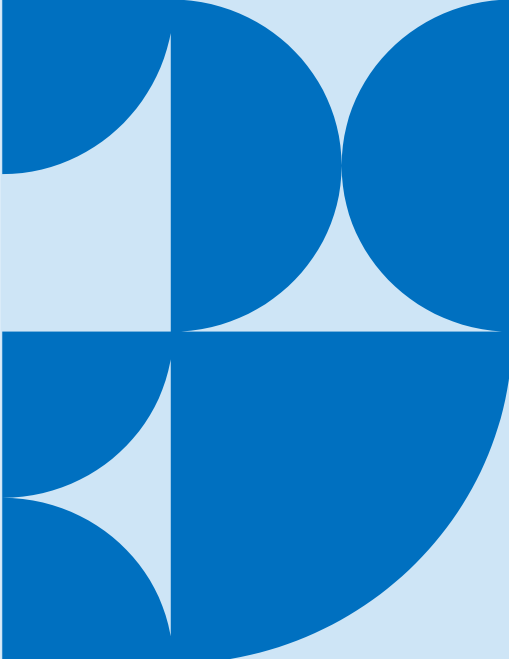
Our Unique Methodology

The Network Associate Programme that we are offering starts with a foundation course in information technology called “Introduction to Internetworking Concepts” so you don’t need any background in IT networking to go onto this course.

After the foundation course we then start with another conceptual bespoke course from scratch called “Interconnecting Cisco Networking Devices” this course starts with very basics of networking and will cover both the software and hardware aspects of IT, so you will be doing the cabling of the devices yourself, troubleshooting the software and hardware. Once your conceptual base is strong, we then take you onto the first certification level which is the Cisco Certified Network Associate – CCNA (Consolidated). Upon completion of CCNA, we will build your skills on advanced level Internetwork troubleshooting and ASA Firewalls using our bespoke courses.

Why Christ College London

We are proud to offer a complete hands-on approach to help the candidates achieve their objectives. We have a high-tech state-of-the-art lab that provides maximum exposure to aspirants of the technologies they would be using in their future jobs as Network Engineers. With our bespoke training programmes, we can pass on the required practical skills combined with individual and group lab projects to ensure that you’ll leave with the confidence and knowledge necessary to start your career in the IT Industry as a Cisco Network Engineer.

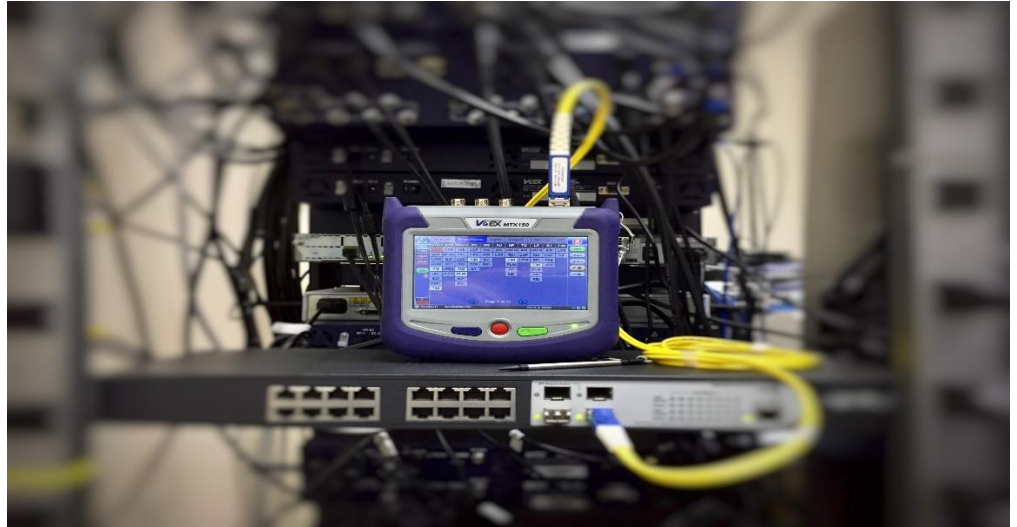


LEVEL 2

CCL NETWORK PROFESSIONAL PROGRAMME – DURATION 24 WEEKS

Programme includes the below courses:

- Course 1: The ENCOR - Implementing and Operating Cisco Enterprise Network Core Technologies – 10 Weeks
- Course 2: Implementing Cisco Enterprise Advanced Routing and Services – 10 Weeks
- Course 3: Advanced Level troubleshooting at Professional Level – 4 Weeks



Our Focus

The emphasis of our bespoke training is on the hands-on lab on real networking devices. We have a high-tech state-of-the-art lab that provides maximum exposure to candidates of the technologies they would be using in their future jobs as Network Engineers. Before the students write the online exam, each student gives an in-house practice exam, once they achieve 95% in the practice exam they then go onto the online exam. This way the student is much more confident in the exam and has a 99% chance of passing the exam with above-average marks.

“IGNITE YOUR GENIUS”

Course 1: The ENCOR - Implementing and Operating Cisco Enterprise Network Core Technologies – 10 Weeks

Course Description:

This course gives you the knowledge and skills needed to configure, troubleshoot, and manage enterprise wired and wireless networks. You'll also learn to implement security principles within an enterprise network and how to overlay network design by using solutions such as SD-Access and SD-WAN.

This course is the First Part of CCNP ENTERPRISE. The core exam is also the qualifying exam for CCIE Enterprise certification.

It's time to transform your career

Don't just pass an exam, become an expert and always stay up to date.



“Believe you can & you’re halfway there. (Theodore Roosevelt)”

Course 2: Implementing Cisco Enterprise Advanced Routing and Services – 10 Weeks

Course Description

This course tests your knowledge of implementation and troubleshooting for advanced routing technologies and services.

This course is the Second Part of CCNP ENTERPRISE. The exam associated with this course will also qualify you as a Technology Specialist.

Crack the Cisco Exams & Become a Certified Network Engineer!

This course will help you gain the knowledge you need to install, configure, operate, and troubleshoot an enterprise network. It will qualify aspirant Network Engineers for professional-level job roles in advance routing and enterprise solutions/services.



Our next area of focus – We break it & You fix it.

Course 3: Advanced Level troubleshooting at Professional Level – 4 Weeks

Course Description:

There are three main steps in troubleshooting:

Identify the problem – The first part of troubleshooting deals with identifying what problem you are trying to solve. Is it a connectivity problem, a network slowdown, route flapping, etc. Having a baseline for expected response time, route paths, etc is key to knowing if the problem you are trying to identify is a real problem or a perceived problem by users.

Diagnose the problem – Once the problem is identified, it is time to gather information, analyse the information gathered and come up with a proposed solution.

Solve the problem – Finally implement the proposed solution and test if it worked. If it did, problem solved. If not, go back to step 2 and gather more information then analyse and propose a different solution.

Christ College London

Head Office:
Christ College London
10-16 Tiller Road,
London. E14 8PX
United Kingdom.
Tel: **+44 (0)203 011 3088**

Christ College Abuja Nigeria

(A Subsidiary of Christ College
London) No.20 Idaho Mohammed
Street, Gudu, Behind Emerald Court,
Gudu, Abuja. FCT.
Nigeria
Tel Nigeria: **+234 703 497 3960**
Tel Head Office: **+44(0)203 011 3088**

**For more information visit our
website:**

<https://christcollegelondon.co.uk/>