

F Major scale

FINGERING CHART
CHEAT SHEETS
FOR BAND



contents

PODIUM CHEAT SHEET

- 3 All instruments
- 4 All instruments (trumpet, clarinet, flute upper octaves)

STUDENT FINGERING CHARTS

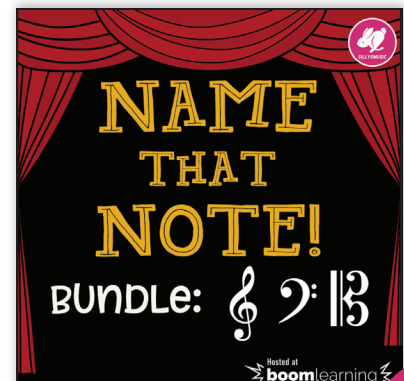
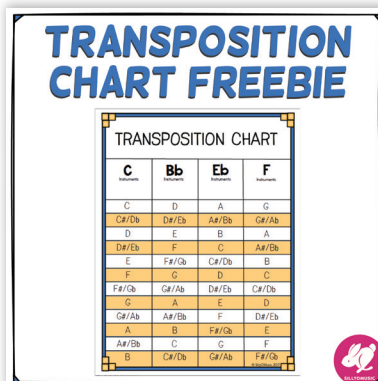
- 5 Trumpet - low
- 6 Trumpet - high
- 7 French Horn
- 8 Trombone
- 9 Baritone B.C.
- 10 Tuba
- 11 Flute - low
- 12 Flute -high
- 13 Oboe
- 14 Clarinet - low
- 15 Clarinet - high
- 16 Alto/Bari Sax
- 17 Tenor Sax
- 18 Bassoon

IDEAS FOR WORKSHEETS

- Project the PDF onto a whiteboard and complete the lines 5, 6, and 7 in sectionals.
- Have students complete lines 5, 6, and 7 for a sub.
- After students play line 1, have them fold the top of the paper back and play line 2, which doesn't have fingerings or note names marked.
- If you don't want students to worry about the bottom of the paper, fold it back before photocopying.
- Allow students to look at the lines they need to for differentiation.

Tip: Print at "Full Scale" instead of fitting to page.

Thanks for purchasing this resource! If you find any errors, please email me at SillyOMusic@gmail.com and I will update the file ASAP. I know that elementary and middle school bands may use different octaves with their groups. Feel free to email if you would like to see an instrument play in a higher or lower octave.



I know that your time as a teacher is valuable.
Here are a few resources you may find useful.



Concert F Scale

BRASS

Trumpet		G	A	B	C	D	E	F#	G
F Horn		C	D	E	F	G	A	B	C
Trombone Baritone		F 6	G 4	A 2	Bb 1	C 6	D 4	E 2	F 1
Tuba		F	G	A	Bb	C	D	E	F

WOODWINDS

Flute		F	G	A	Bb	C	D	E	F
Oboe		F	G	A	Bb	C	D	E	F
Clarinet		F	G	A	Bb	C	D	E	F
Alto/Bari Sax		F	G	A	Bb	C	D	E	F
Tenor Sax		F	G	A	Bb	C	D	E	F
Bassoon		F	G	A	Bb	C	D	E	F

● = whisper key

Trumpet, flute, clarinet upper octave

Concert F Scale

BRASS

Trumpet		G	A	B	C	D	E	F#	G
F Horn		C	D	E	F	G	A	B	C
Trombone Baritone		F 6	G 4	A 2	Bb 1	C 6	D 4	E 2	F 1
Tuba		F	G	A	Bb	C	D	E	F

WOODWINDS

Flute		F	G	A	Bb	C	D	E	F
Oboe		F	G	A	Bb	C	D	E	F
Clarinet		G	A	B	C	D	E	F#	G
Alto/Bari Sax		D	E	F#	G	A	B	C#	D
Tenor Sax		G	A	B	C	D	E	F#	G
Bassoon		F	G	A	Bb	C	D	E	F

● = whisper key

Concert F Scale

1. Scale with hints

2. Scale

3. Arpeggio with hints

4. Arpeggio

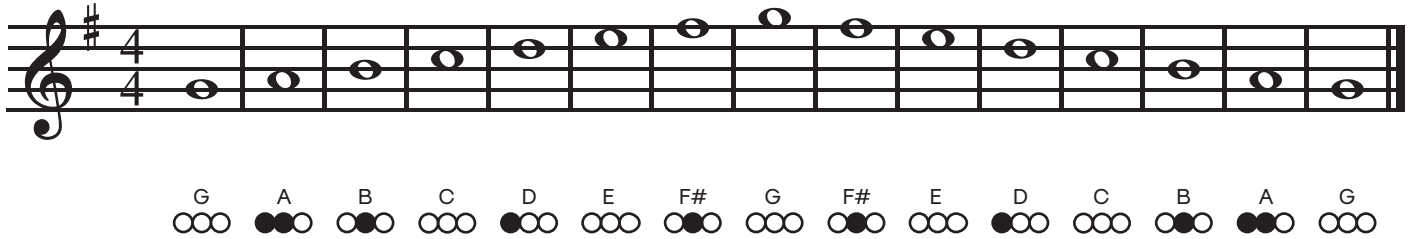
5. Draw the notes of the scale.

6. Draw the notes of the arpeggio.

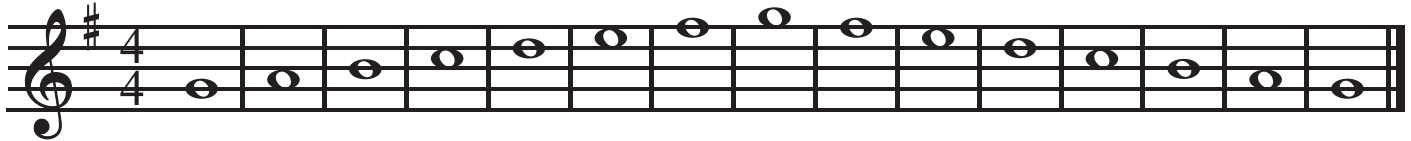
7. Fill-in the measures with notes from the scale in any order.

Concert F Scale

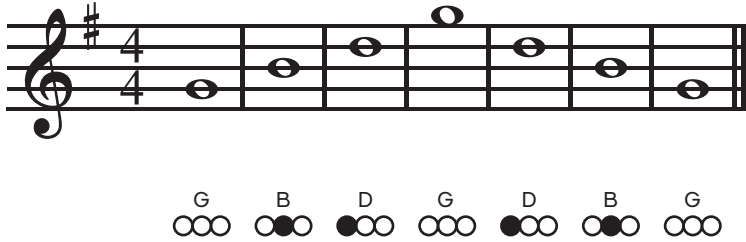
1. Scale with hints



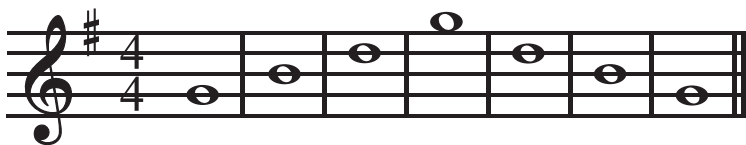
2. Scale



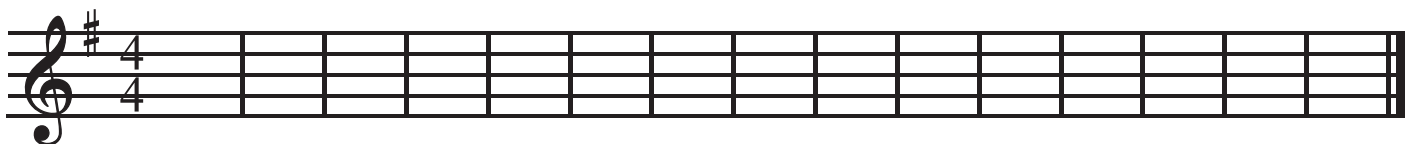
3. Arpeggio with hints



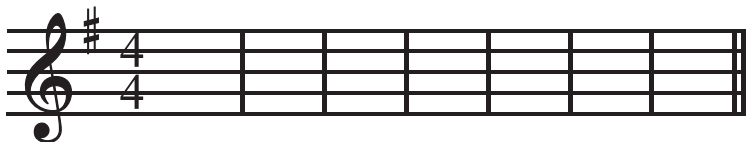
4. Arpeggio



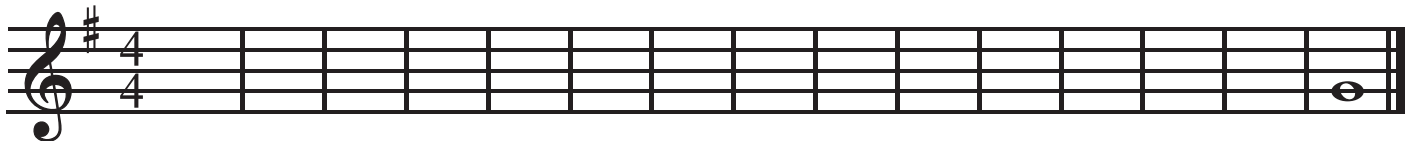
5. Draw the notes of the scale.



6. Draw the notes of the arpeggio.

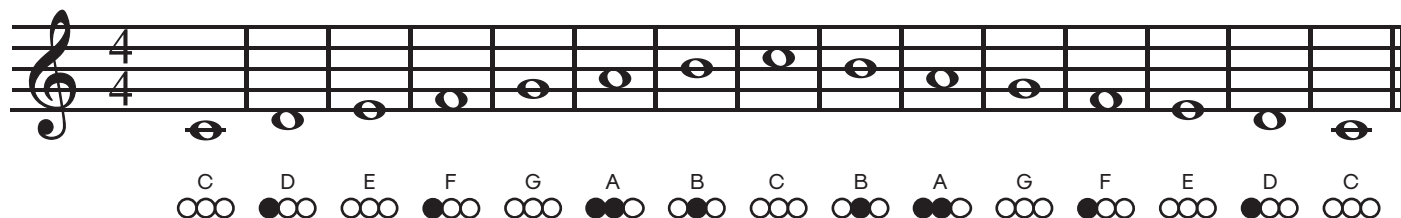


7. Fill-in the measures with notes from the scale in any order.

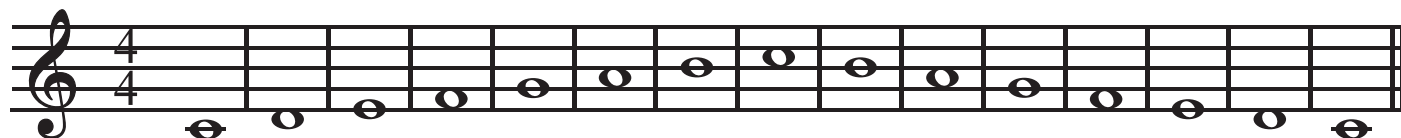


Concert F Scale

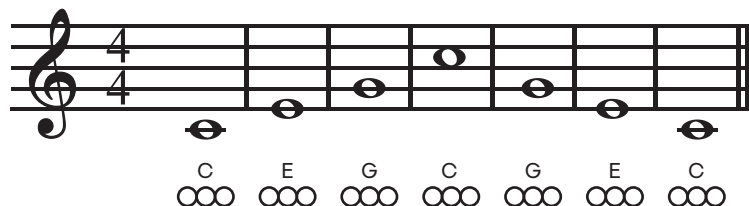
1. Scale with hints



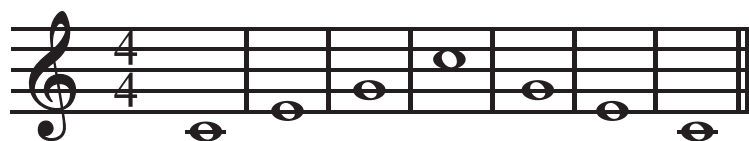
2. Scale



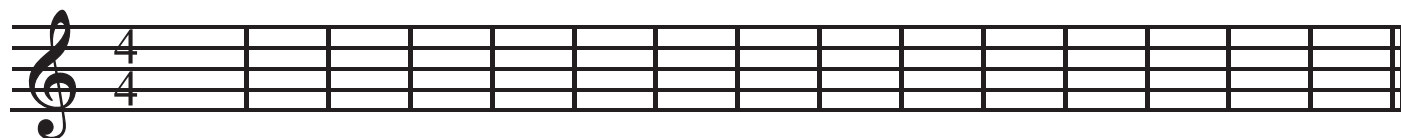
3. Arpeggio with hints



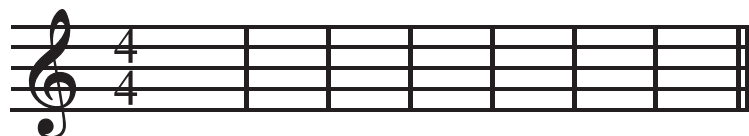
4. Arpeggio



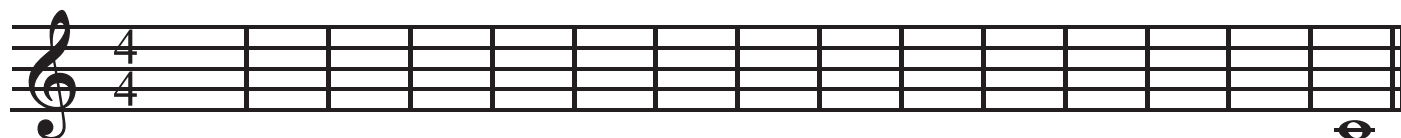
5. Draw the notes of the scale.



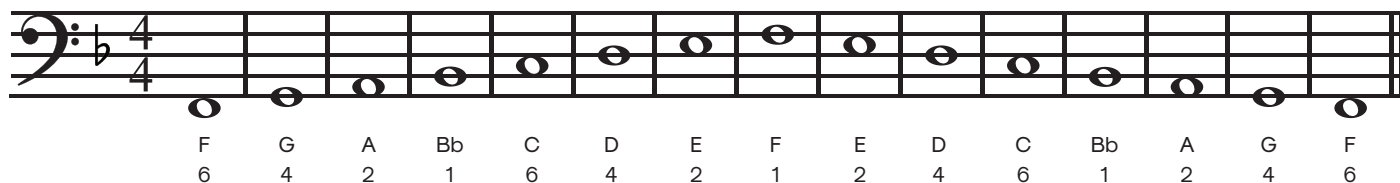
6. Draw the notes of the arpeggio.



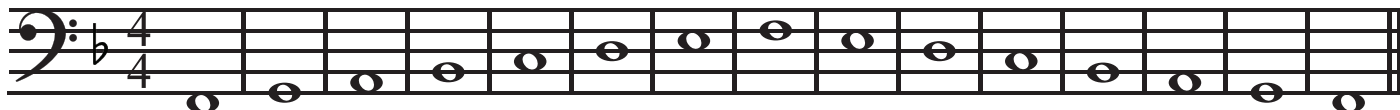
7. Fill-in the measures with notes from the scale in any order.



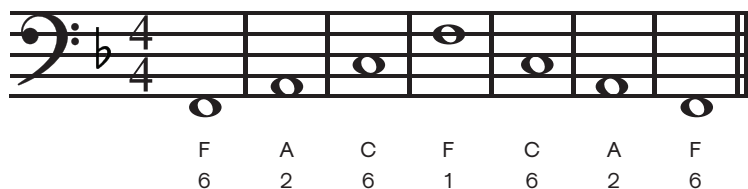
1. Scale with hints



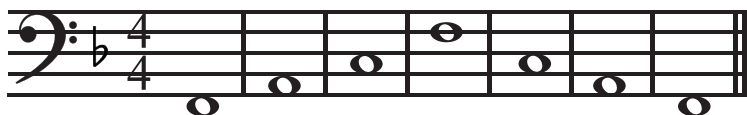
2. Scale



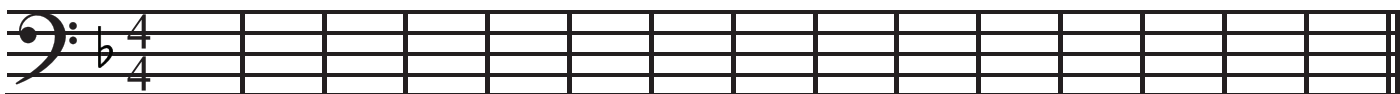
3. Arpeggio with hints



4. Arpeggio



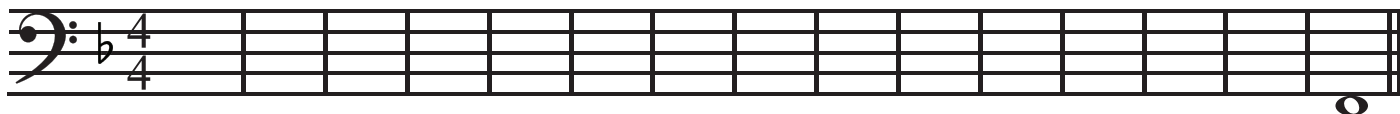
5. Draw the notes of the scale.



6. Draw the notes of the arpeggio.

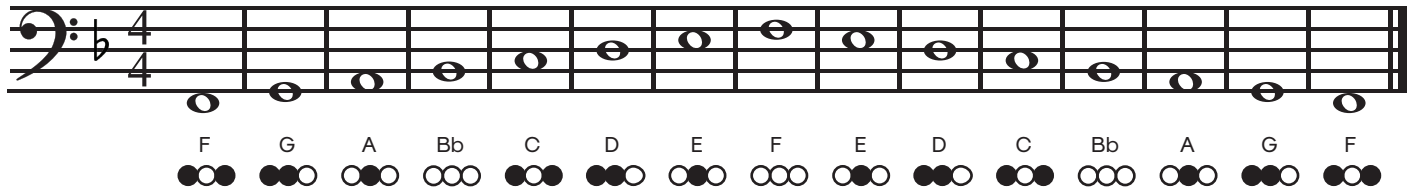


7. Fill-in the measures with notes from the scale in any order.

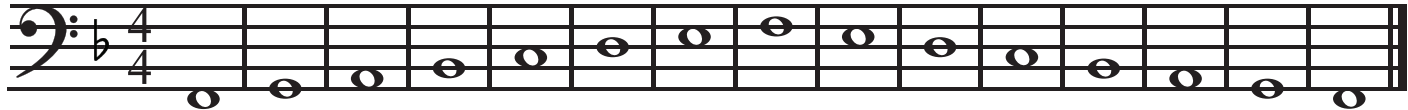


Concert F Scale

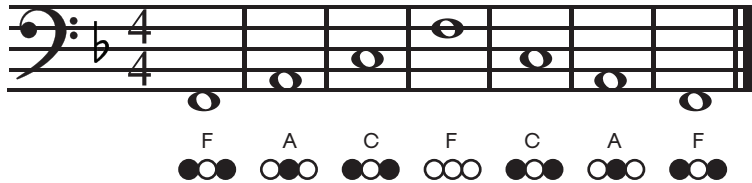
1. Scale with hints



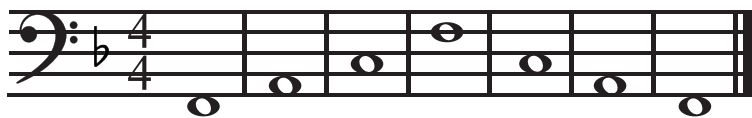
2. Scale



3. Arpeggio with hints



4. Arpeggio



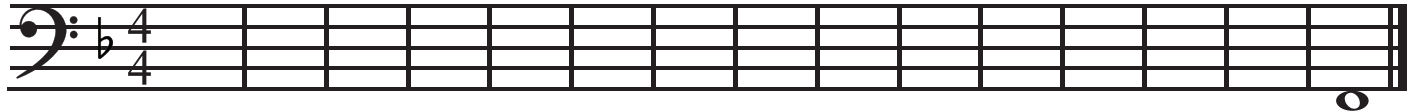
5. Draw the notes of the scale.



6. Draw the notes of the arpeggio.

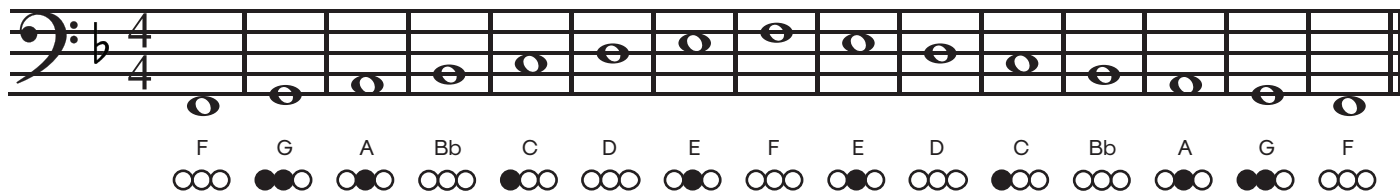


7. Fill-in the measures with notes from the scale in any order.



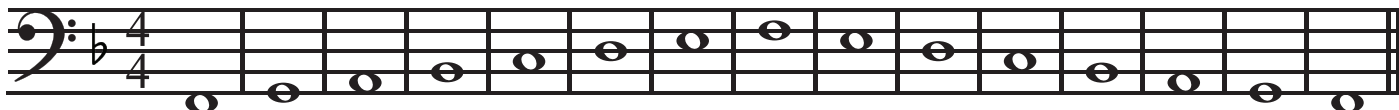
Concert F Scale

1. Scale with hints

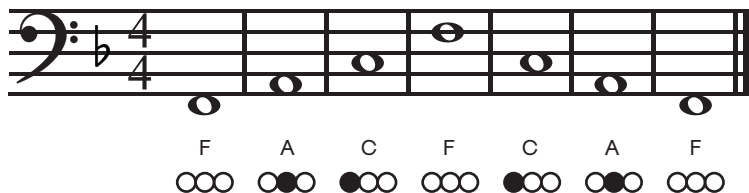


F G A Bb C D E F E D C Bb A G F

2. Scale

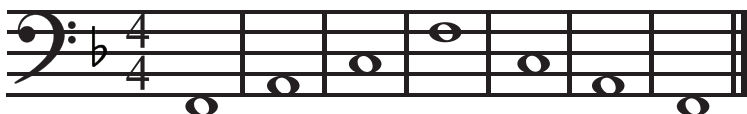


3. Arpeggio with hints




F A C F C A F

4. Arpeggio



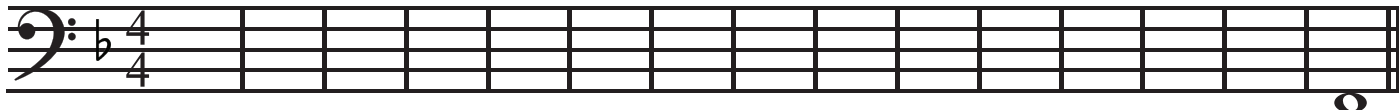
5. Draw the notes of the scale.



6. Draw the notes of the arpeggio.

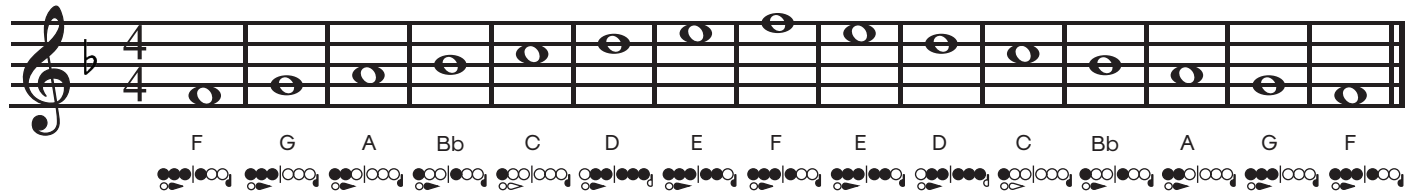


7. Fill-in the measures with notes from the scale in any order.

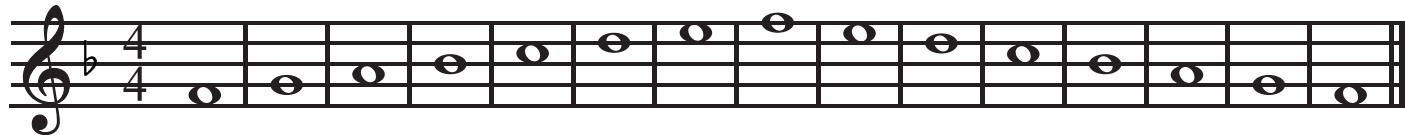


Concert F Scale

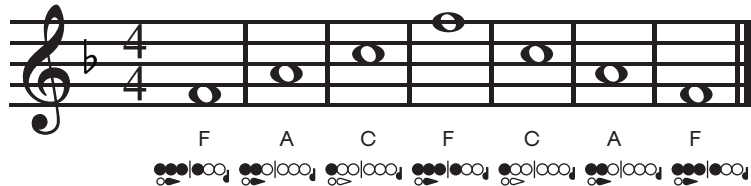
1. Scale with hints



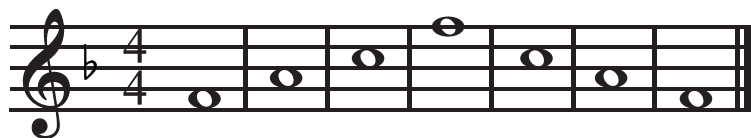
2. Scale



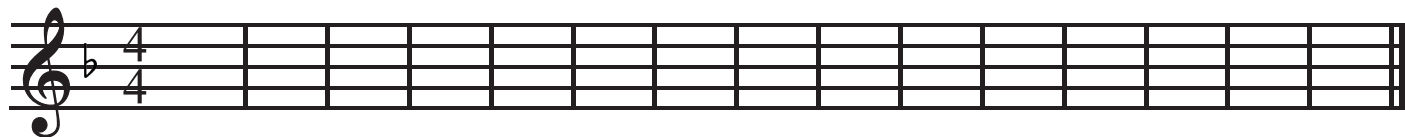
3. Arpeggio with hints



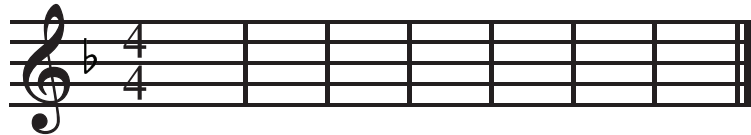
4. Arpeggio



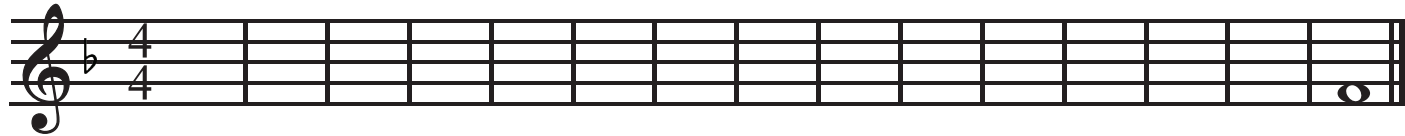
5. Draw the notes of the scale.



6. Draw the notes of the arpeggio.



7. Fill-in the measures with notes from the scale in any order.



Concert F Scale

1. Scale with hints

F G A Bb C D E F E D C Bb A G F

2. Scale

3. Arpeggio with hints

F A C F C A F

4. Arpeggio

5. Draw the scale.

6. Draw the arpeggio.

7. Fill-in the measures with notes from the scale in any order.

Concert F Scale

1. Scale with hints

Musical staff for the Concert F Scale (4/4 time, key of B-flat major). The scale is written with half notes. Below the staff, the notes and their corresponding fingerings are provided:

Note	Fingering
F	1, 2, 3, 4, 5
G	1, 2, 3, 4, 5
A	1, 2, 3, 4, 5
Bb	1, 2, 3, 4, 5
C	1, 2, 3, 4, 5
D	1, 2, 3, 4, 5
E	1, 2, 3, 4, 5
F	1, 2, 3, 4, 5
E	1, 2, 3, 4, 5
D	1, 2, 3, 4, 5
C	1, 2, 3, 4, 5
Bb	1, 2, 3, 4, 5
A	1, 2, 3, 4, 5
G	1, 2, 3, 4, 5
F	1, 2, 3, 4, 5

2. Scale

Musical staff for the Concert F Scale (4/4 time, key of B-flat major). The scale is written with half notes.

3. Arpeggio with hints

Musical staff for the Concert F Arpeggio (4/4 time, key of B-flat major). The arpeggio is written with half notes. Below the staff, the notes and their corresponding fingerings are provided:

Note	Fingering
F	1, 2, 3, 4, 5
A	1, 2, 3, 4, 5
C	1, 2, 3, 4, 5
F	1, 2, 3, 4, 5
C	1, 2, 3, 4, 5
A	1, 2, 3, 4, 5
F	1, 2, 3, 4, 5

4. Arpeggio

Musical staff for the Concert F Arpeggio (4/4 time, key of B-flat major). The arpeggio is written with half notes.

5. Draw the notes of the scale.

Empty musical staff for drawing the notes of the scale (4/4 time, key of B-flat major).

6. Draw the notes of the arpeggio.

Empty musical staff for drawing the notes of the arpeggio (4/4 time, key of B-flat major).

7. Fill-in the measures with notes from the scale in any order.

Empty musical staff for filling in measures with notes from the scale in any order (4/4 time, key of B-flat major).

Concert F Scale

1. Scale with hints

2. Scale

3. Arpeggio with hints

4. Arpeggio

5. Draw the notes of the scale.

6. Draw the notes of the arpeggio.

7. Fill-in the measures with notes from the scale in any order.

Concert F Scale

1. Scale with hints

15 measures of whole notes: G, A, B, C, D, E, F#, G, F#, E, D, C, B, A, G. Fingerings are provided for each note.

2. Scale

15 measures of whole notes: G, A, B, C, D, E, F#, G, F#, E, D, C, B, A, G.

3. Arpeggio with hints

7 measures of whole notes: G, B, D, G, D, B, G. Fingerings are provided for each note.

4. Arpeggio

7 measures of whole notes: G, B, D, G, D, B, G.

5. Draw the notes of the scale.

15 empty measures for drawing notes.

6. Draw the notes of the arpeggio.

7 empty measures for drawing notes.

7. Fill-in the measures with notes from the scale in any order.

15 empty measures for filling in notes.

Concert F Scale

1. Scale with hints

D E F# G A B C# D C# B A G F# E D

2. Scale

3. Arpeggio with hints

D F# A D A F# D

4. Arpeggio

5. Draw the notes of the scale.

6. Draw the notes of the arpeggio.

7. Fill-in the measures with notes from the scale in any order.

Concert F Scale

1. Scale with hints

4/4

G A B C D E F# G F# E D C B A G

2. Scale

4/4

3. Arpeggio with hints

4/4

G B D G D B G

4. Arpeggio

4/4

5. Draw the notes of the scale.

4/4

6. Draw the notes of the arpeggio.

4/4

7. Fill-in the measures with notes from the scale in any order.

4/4

1. Scale with hints

● = whisper key

4/4

F G A Bb C D E F E D C Bb A G F

Diagram showing fingerings for the Concert F Scale (F major) in bass clef, 4/4 time. The scale is written on a single staff. Below the staff, the notes are labeled: F, G, A, Bb, C, D, E, F, E, D, C, Bb, A, G, F. Each note is accompanied by a diagram of the bassoon keys, with black dots indicating the 'whisper key' (the key immediately below the main key) for each note.

2. Scale

4/4

Diagram showing the musical notation for the Concert F Scale (F major) in bass clef, 4/4 time. The scale is written on a single staff.

3. Arpeggio with hints

4/4

F A C F C A F

Diagram showing fingerings for the Concert F Arpeggio (F major) in bass clef, 4/4 time. The arpeggio is written on a single staff. Below the staff, the notes are labeled: F, A, C, F, C, A, F. Each note is accompanied by a diagram of the bassoon keys, with black dots indicating the 'whisper key' for each note.

4. Arpeggio

4/4

Diagram showing the musical notation for the Concert F Arpeggio (F major) in bass clef, 4/4 time. The arpeggio is written on a single staff.

5. Draw the notes of the scale.

4/4

Blank musical notation for drawing the notes of the scale. The staff is in bass clef, 4/4 time.

6. Draw the notes of the arpeggio.

4/4

Blank musical notation for drawing the notes of the arpeggio. The staff is in bass clef, 4/4 time.

7. Fill-in the measures with notes from the scale in any order.

4/4

Blank musical notation for filling in measures with notes from the scale. The staff is in bass clef, 4/4 time.

CLASSROOM FAVORITES



RECORDER MADE EASY

- Recorder Cat streamlines every piece into a seamless PPT lesson
- Music is embedded into the slides
- Printables for at-home practice
- FUN! My kids loved trying to test out of each piece!



BEST SELLING GAME

- A musical way to play this favorite indoor recess game
- Enough slides to play multiple rounds
- Great reinforcement for many different concepts
- Musical way to fill time or conclude your lessons



MUSIC COLORING

- Great for sub plans and centers
- Use as a classroom reward
- Great for early finishers
- Looks great on bulletin boards



HOLIDAY PRINTABLES

- Perfect for Emergency Sub Plans
- Worksheets, Games, Glyphs, and lots of COLORING!
- Fun activities for every season
- This bundle is always growing so check back before each holiday



«« CATALOG



Terms of Use

The purchase or free download of this product entitles you to one, non-transferable, single-user license for personal and educational use. No part of this product may be resold or used to create other products.

All graphics and products are copyright of Jane Marsilio. If you have any concerns, requests, or suggestions, please email me. Thank you for using SillyOMusic!

SillyOMusic@gmail.com

Follow me for deals, freebies, and new products!



Clip Art by
SillyODesign

