



Regina, Sk.  
S4S 4H5  
Phone: 306-531-5512  
E-mail: brett.roach@brdesignsask.ca

Certificate of Authorization:

Professional Seal:

Project Name:

**SAMPLE** - Complete Fire Alarm Design of a  
Standard Strip Mall Style Building

Drawing Title:

**SAMPLE** - Fire Alarm GA Device Layout

SCALE:  
NTS

APPROVED BY:  
xxx

BR Issued for Sample 01/01/01

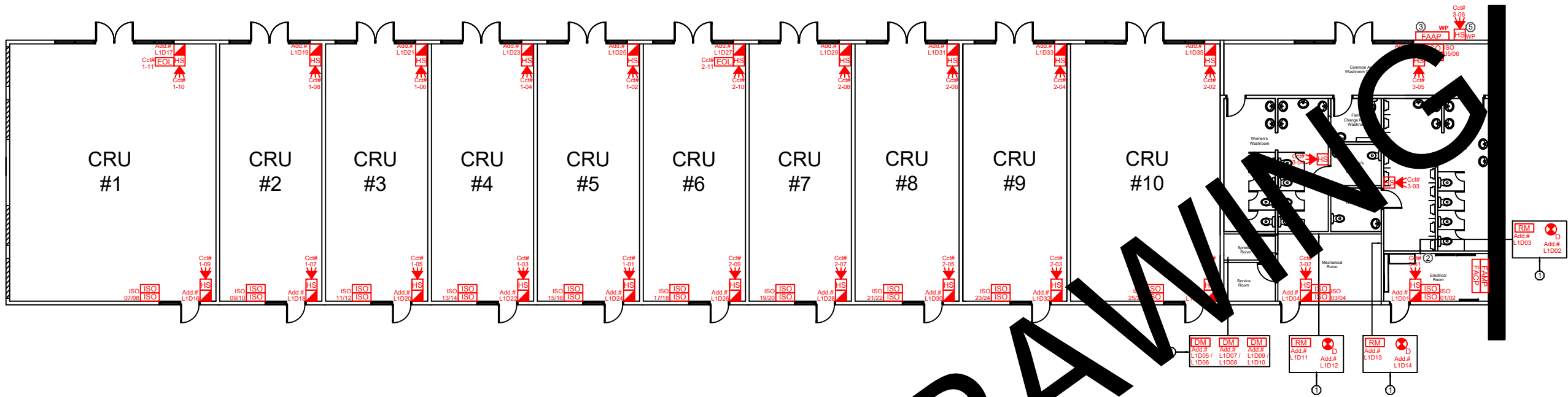
By Drawing Revision Date

Drawing #:

Revision #:

FA-03

0



- Drawing Notes**
- Approximate location of combination smoke/fire dampers. Electrical contractor shall:
    - Provide an addressable duct detector and relay module for connection to the damper unit supplied by the Mechanical contractor. There are three damper units in total.
    - Provide a 120VAC power source independent of the fire alarm system.
    - Coordinate with on site Mechanical contractor for final placement.
    - Confirm which isolator zone the duct detector and relay will be located in and isolate devices within the zone they exist in.
  - Telephone Demarc. Electrical contractor shall connect Fire Monitoring system analog phone line here. Termination to be coordinated with Communications contractor.
  - Outdoor annunciator (FAAP) shall be equipped with a weatherproof enclosure affixed with a 120VAC heater to maintain operation during cold weather months. 120VAC circuit shall be dedicated and independent of the power source for the fire alarm panel (FACP).
  - Each sprinkler system shall be individually monitored by the fire alarm as follows:
    - Backflow Tamper/Valve #1
    - Backflow Tamper/Valve #2
    - East Tamper Valve
    - East Waterflow
    - West Tamper Valve
    - West WaterflowContractor shall coordinate final device placement with the Sprinkler contractor.
  - Outdoor Horn/Strobe shall be rated for outdoor applications and capable of operation during cold weather months.

Fire Alarm System Device Legend	
	Fire Alarm Control Panel
	Fire Alarm Annunciator Panel
	Fire Alarm Monitoring Panel
	Manual Pull Station
	Smoke Detector
	Fixed Temperature Heat Detector
	Rate-of-Rise/Fixed Temperature Heat Detector
	Isolator Module
	Horn/Strobe
	End-of-Line Plate
	Weatherproof fixture required
	Duct Detector
	Relay Module
	Dual Input Module

Isolator Zone Legend		
Zone Description	Isolator #s	Input Device Quantity
Electrical Room	01 / 02	3
Mechanical Room	03 / 04	9
Common Area Washroom Corridor	05 / 06	1
CRU #1	07 / 08	2
CRU #2	09 / 10	2
CRU #3	11 / 12	2
CRU #4	13 / 14	2
CRU #5	15 / 16	2
CRU #6	17 / 18	2
CRU #7	19 / 20	2
CRU #8	21 / 22	2
CRU #9	23 / 24	2
CRU #10	25 / 26	2
CRU #11	27 / 28	2
CRU #12	29 / 30	2
CRU #13	31 / 32	2
CRU #14	33 / 34	2
CRU #15	35 / 36	2
CRU #16	37 / 38	2
CRU #17	39 / 40	2
CRU #18	41 / 42	2

Sequence of Operation						
Inputs/Outputs	Notification Circuits	Damper Closure Relay L1D03	Damper Closure Relay L1D11	Damper Closure Relay L1D13	Alarm Signal to Central Station	Trouble Signal to Central Station
Manual Pull Station	X				X	
Waterflow Device	X				X	
Damper Duct Detector L1D02	X	X			X	
Damper Duct Detector L1D12	X		X		X	
Damper Duct Detector L1D14	X			X	X	
Supervisory Input						
Any Sprinkler System Tamper Valve					X	
Trouble Inputs						
Any Fire Alarm Control Panel or System Trouble						X

