

Hello
my name is

HELENE

9-28-24: To the Residents of the Western Carolinas and Northeast Georgia:

We are devastated by the horrific flooding and widespread wind damage that was caused by Hurricane Helene across our forecast area. There are no words to express our sorrow at the loss of life and incredible impacts to property.

Our mission is to provide critical, life-saving forecasts and warnings for hazardous weather events.

As meteorologists, we always want to get the forecast right. This is one we wanted to get wrong.

This is the worst event in our office's history. We want everyone to know that our thoughts and our prayers are with the residents and first responders across the area as we go through this historic event together.

Our hearts are heavy this weekend, knowing that our neighbors, friends, and families are dealing with so much. We live here, too. We are proud to be part of this community and are grateful to serve the wonderful people of the western Carolinas and northeast Georgia. We will be here with you all every step of the way through the response efforts and recovery process.

We'd like to add a special message of appreciation to the first responders, including linemen, who are working around the clock and putting themselves in danger. Thank you all.

Sincerely,

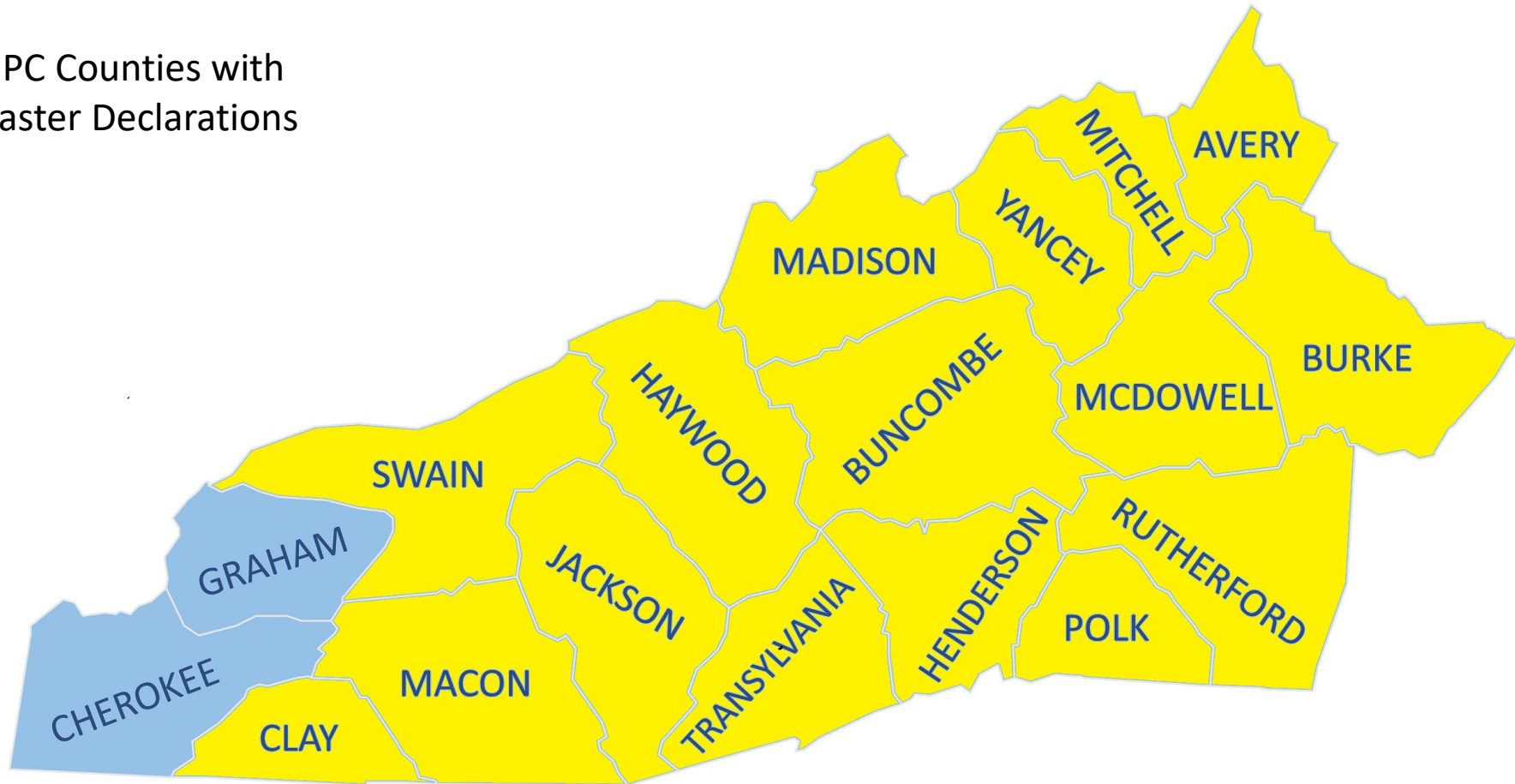
NWS Greenville-Spartanburg, SC

Scope of Impact

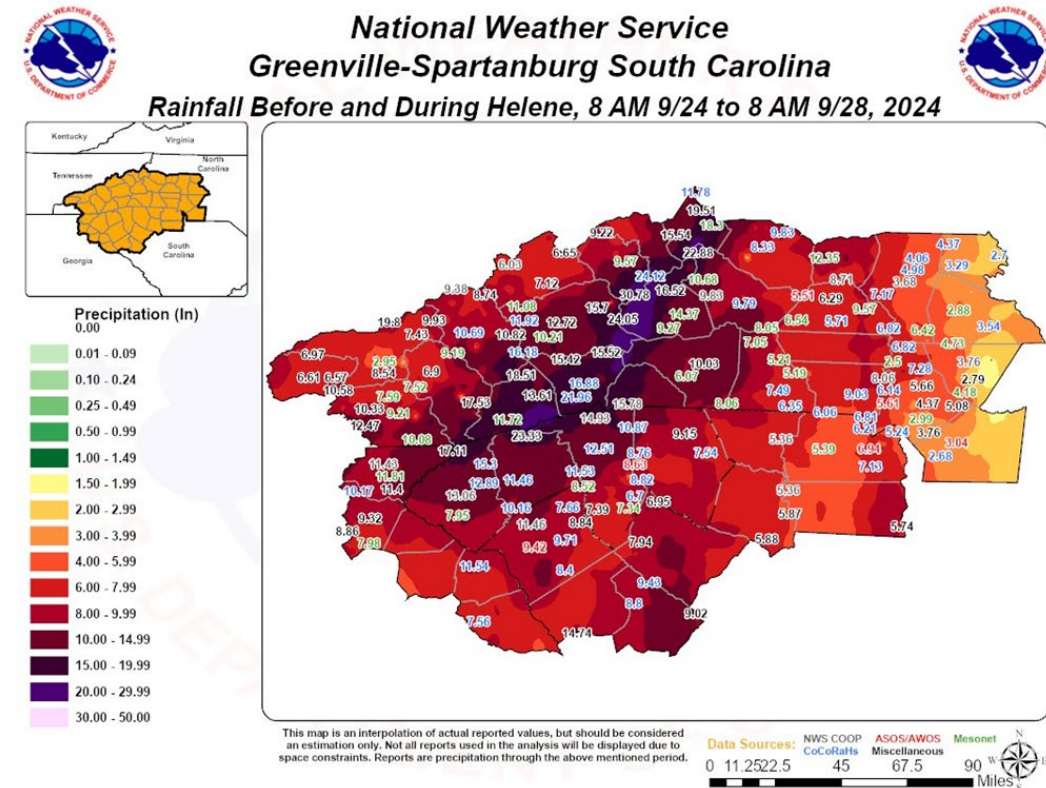
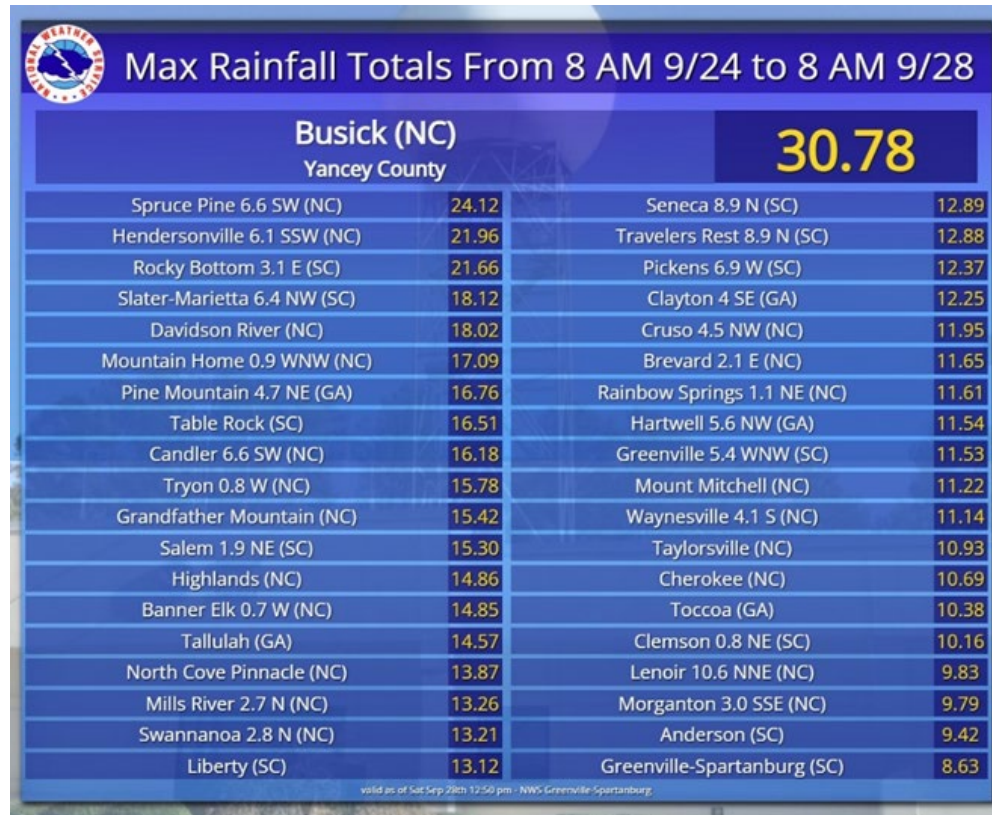
- Major Disaster Declaration includes 27 North Carolina counties (Alexander, Alleghany, Ashe, Avery, Buncombe, Burke, Caldwell, Catawba, Clay, Cleveland, Gaston, Haywood, Henderson, Jackson, Lincoln, Macon, Madison, McDowell, Mecklenburg, Mitchell, Polk, Rutherford, Swain, Transylvania, Watauga, Wilkes and Yancey) and the Eastern Band of Cherokee Indians.
 - <https://governor.nc.gov/news/press-releases/2024/10/16/governor-cooper-visits-yancey-and-mitchell-counties-survey-storm-damage-federal-state-local-and-non#:~:text=The%20Major%20Disaster%20Declaration%20already,%2C%20Transylvania%2C%20Watauga%2C%20Wilkes%20and>
- 16 of the 27 declared Counties and EBCI are in the MAHPC region

Scope of Impact

 = MAHPC Counties with
Major Disaster Declarations



Rainfall Totals – from the Precursor & Helene





Why was western North Carolina hit so hard?

- A preceding storm had already soaked the ground: and then up to two feet of rain fell. “That’s about a half-year’s worth of rain coming in four days,” said Doug Outlaw, a National Weather Service meteorologist in South Carolina. “It’s one of the worst weather events that’s hit this area in history.”



Additional Stats

FOX CAROLINA **FIRST ALERT WEATHER** **PEAK WIND GUSTS**
MILES PER HOUR

MT. MITCHELL ST PK **106**

FRYING PAN MTN **87**

ANDERSON **72**

GSP AIRPORT **68**

CLEMSON **66**

FOX CAROLINA **FIRST ALERT WEATHER** **HISTORIC FLOODS**

40 TRILLION GALLONS OF RAIN

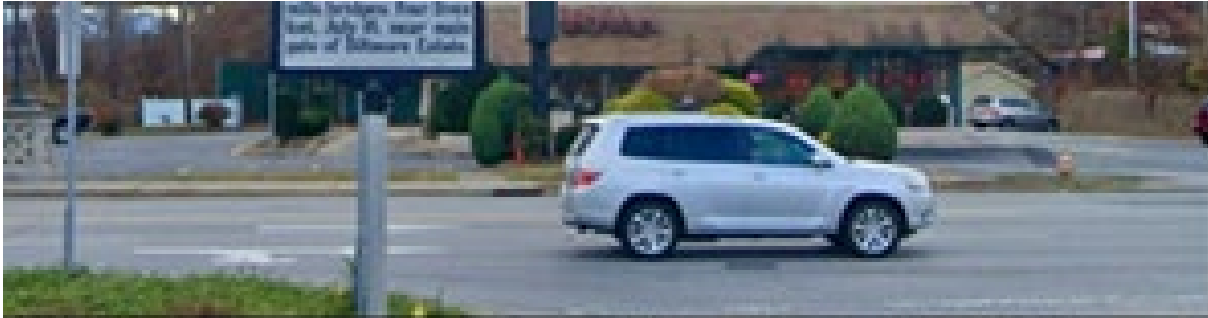
ENOUGH TO COVER NORTH CAROLINA

WITH 3.5' OF WATER

Should I Stay or Should I Go?



1916 & 2024





Mission Health



DMAT at Mission Main



Department Of Health And Human Services' Administration For Strategic Preparedness And Response

Other support



Cannon Hospital



— The Samaritan's Purse field hospital in Linville, North Carolina, said it has treated over 70 patients and refilled more than 200 oxygen tanks since Hurricane Helene hit the region last week. Other field hospitals have not been as busy. Minnyvonne Burke / NBC News

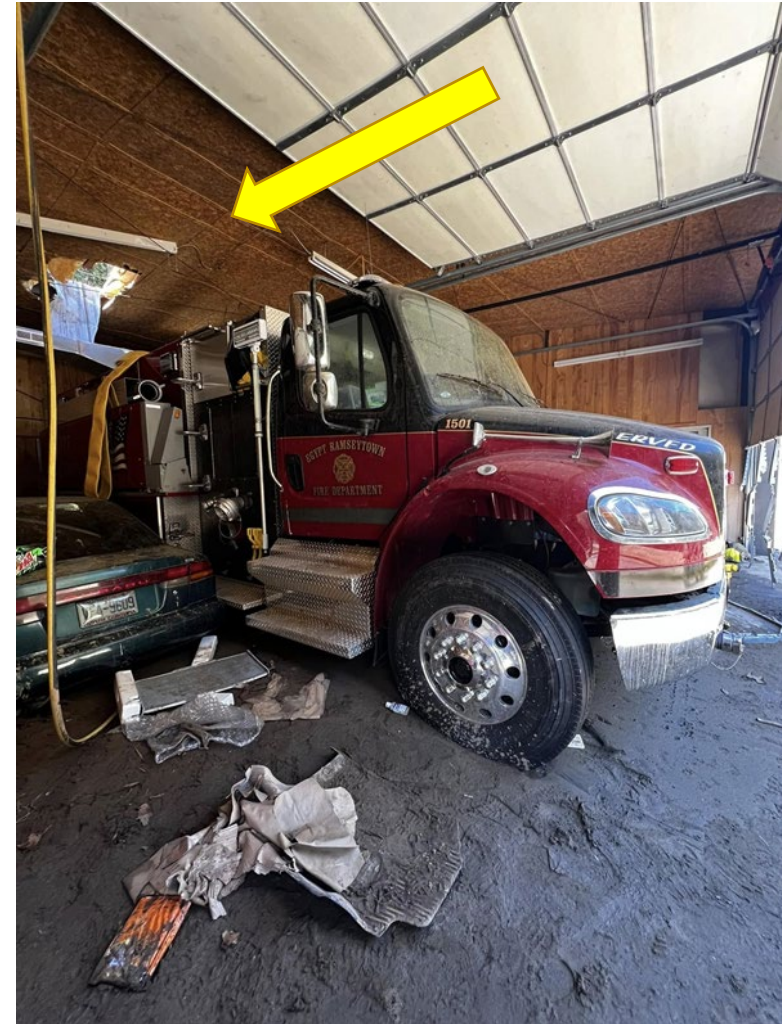
UNC – Pardee



Egypt-Ramseytown Volunteer Fire Dept.



Egypt-Ramseytown Volunteer Fire Dept.



Green Cove Community – Yancey County



Green Cove Community – Yancey County



Bakersville Community Care Site





Buncombe Co. Shelter – ABTCC Main Campus

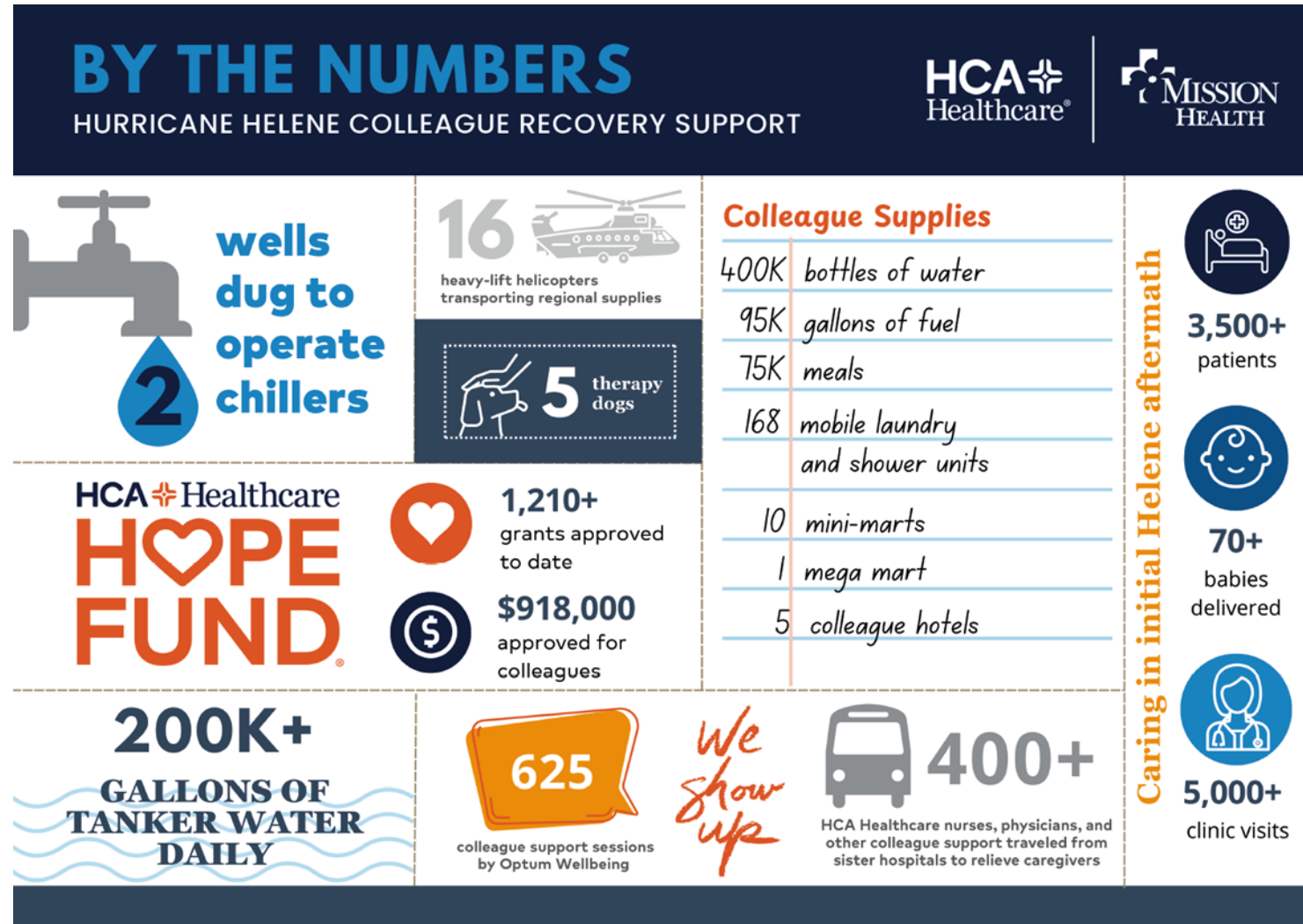
Additional Community Care Sites



MSU supplied by EHPC

- Old Fort in McDowell County
 - Marion in McDowell County
 - Newland in Avery County
-
- Last site demobilized – Marion, NC on 11/17/24

HCA Healthcare Support for Mission Health



Locations supported directly by MAHPC during Helene

Avery County	Mayland CC	Community Care Site
Buncombe County	Mission Main	MSUs, tents, VIPER radios, air mattresses
Buncombe County	AB Tech	Medical Shelter
Buncombe County	JFK ADAC	Patient Cots
Buncombe County	WNC Ag Center	Gen Pop/Medical Supplies
Buncombe County	Aston Park LTC	20 - 1000cc bags Normal Saline
Buncombe County	Asheville Fire Dept.	40 body bags
Buncombe County	400 Ridgefield Court	morgue trailer, body bags, sandbags
Cleveland County	Camp Shelby Medical Shelter	Major Pharmacy Cache
Haywood County	Haywood Regional Hospital	20 portable suction units
Henderson County	Hendersonville	Gen Pop Shelter/Medical Supplies
Henderson County	Pardee Hospital	WS 1935 Tent, cots
Henderson County	EMS	Zoll monitor & supplies to place 12 th EMS unit in service *
Jackson County	EMS	O2 Cache
Mitchell County	Bakersville	Community Care Site
Polk County	Public Health	Oxygen Concentrators
Rutherford County	Rutherford Regional Hospital	O2 Cache
Rutherford County	EMS	Ambulance Strike Team Resupply Trailer
Transylvania County	Transylvania Regional Hospital	20 sandbags
Yancey County	EMS	O2 cache, EKG electrodes
Yancey County	Green Cove Community	Community Care Site
Yancey County	Hospice and Palliative Care	Air scrubbers and dehumidifiers

*12th Henderson Co. EMS remains in service as of 3/25/25 to support limited access communities of Bat Cave and Gerton

Top Four Greatest Challenges for MAHPC



Communications



Rumors



Supply Chain



Travel

When the wifi is down for ten minutes



Communications

Communications



Cell phones towers only operate on commercial power or “running” back up generators.



Local radio systems may not be functional



Not all agencies/facilities are familiar with VIPER or Amateur Radio.



Have a PACE plan!



A No Communication Situation Can Create a No Transportation Situation.

MAHPC REGION VIPER MEDICAL NETWORK QUICK REFERENCE CARD

Hospital (County)	Zone - Talkgroup
Cannon Hospital (Avery)	VMA50092
Asheville VA (Buncombe)	VMA50472
UNC Blue Ridge Morganton (Burke)	VMA50492
UNC Blue Ridge Valdese (Burke)	VMA50502
Erlanger Western Carolina (Cherokee)	VMB50672
Haywood Regional (Haywood)	VMC52282
Pardee Hospital (Henderson)	VMC52422
Advent Health H'ville (Henderson)	VMC52423
Harris Regional (Jackson)	VMC52492
Angel Medical (Macon)	VMD52592
McDowell Hospital (McDowell)	VMD52652
Blue Ridge Regional (Mitchell)	VMD52752
Swain Hospital (Swain)	VME54402
Transylvania Regional (Transylvania)	VME54442
Advent Health Polk (Polk)	VMF54872
Rutherford Regional (Rutherford)	VMF54882
Highlands-Cashiers (Macon)	VMF56762
Mission Hospital (Buncombe)	VMG57442
Broughton Hospital (Burke)	VMI58207
Mission South ER (Buncombe)	VMI58508
Cherokee Indian Hospital (Swain)	VMK78602
Black Mountain Neuro (Buncombe)	VMK79000



NC Emergency Operations Center	SW EOC 1.800.858.0368
MAHPC Phone Number	828.693.6212
MAHPC DISASTER Talkgroup	VMG57573
MAHPC OPERATIONS Talkgroup	VMG57610



Voice Communication Pathways

P- Primary _____
A- Alternate _____
C- Contingency _____
E- Emergency _____



During an activation, incident or event, MAHPC staff monitor MAHPC OPERATIONS Talkgroup VMG57610

Rumors

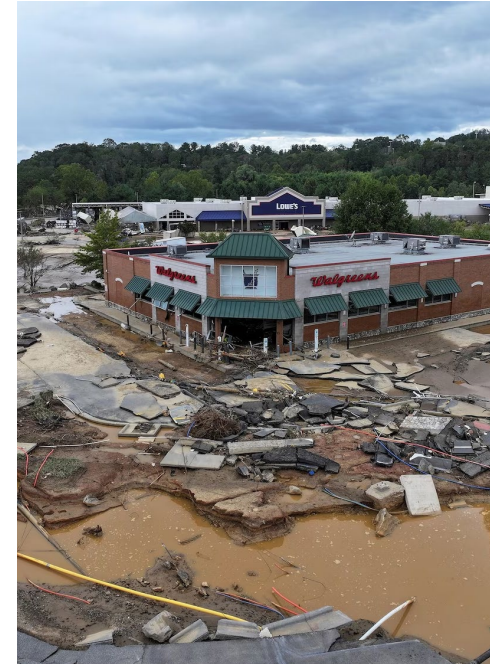
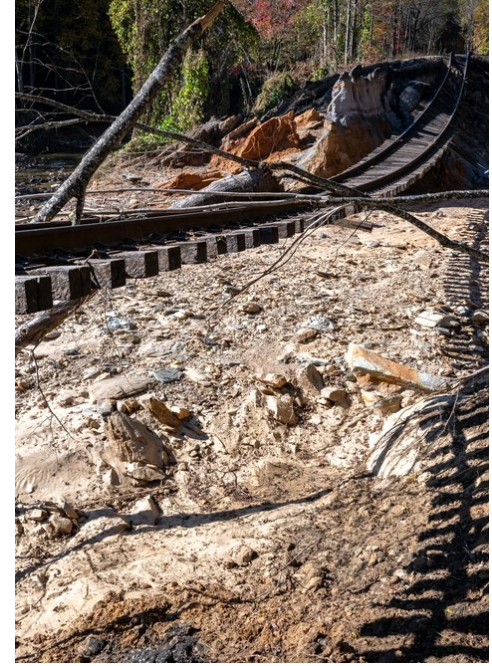


Rumors




The situation migrated quickly from misinformation to disinformation.

Supply Chain



Supply Chain

Flooding and infrastructure damage forced a temporary halt in IV fluid production at Baxter's North Cove facility.



Baxter Healthcare in Marion, NC (McDowell County) supplies approximately 60% of the nation's IV fluids.

Impact of Baxter's Shut Down

IV Fluid Shortage Post-Hurricane Helene

Key Findings by Truveta Research

- **Impact on Emergency Rooms**
 - Pre-storm: **6.6%** of ER dehydration patients received saline IVs.
 - 10 days post-storm: Dropped to **2.5%**.
 - Significant decline due to reduced supplies.
- **Affected Patient Groups**
 - Trend consistent across all age groups.
 - Similar declines observed in patients with nausea or vomiting.
- **Source**
<https://www.juvar.com/the-iv-fluid-shortage-after-hurricane-helene-impacts-and-emergency-response/> |

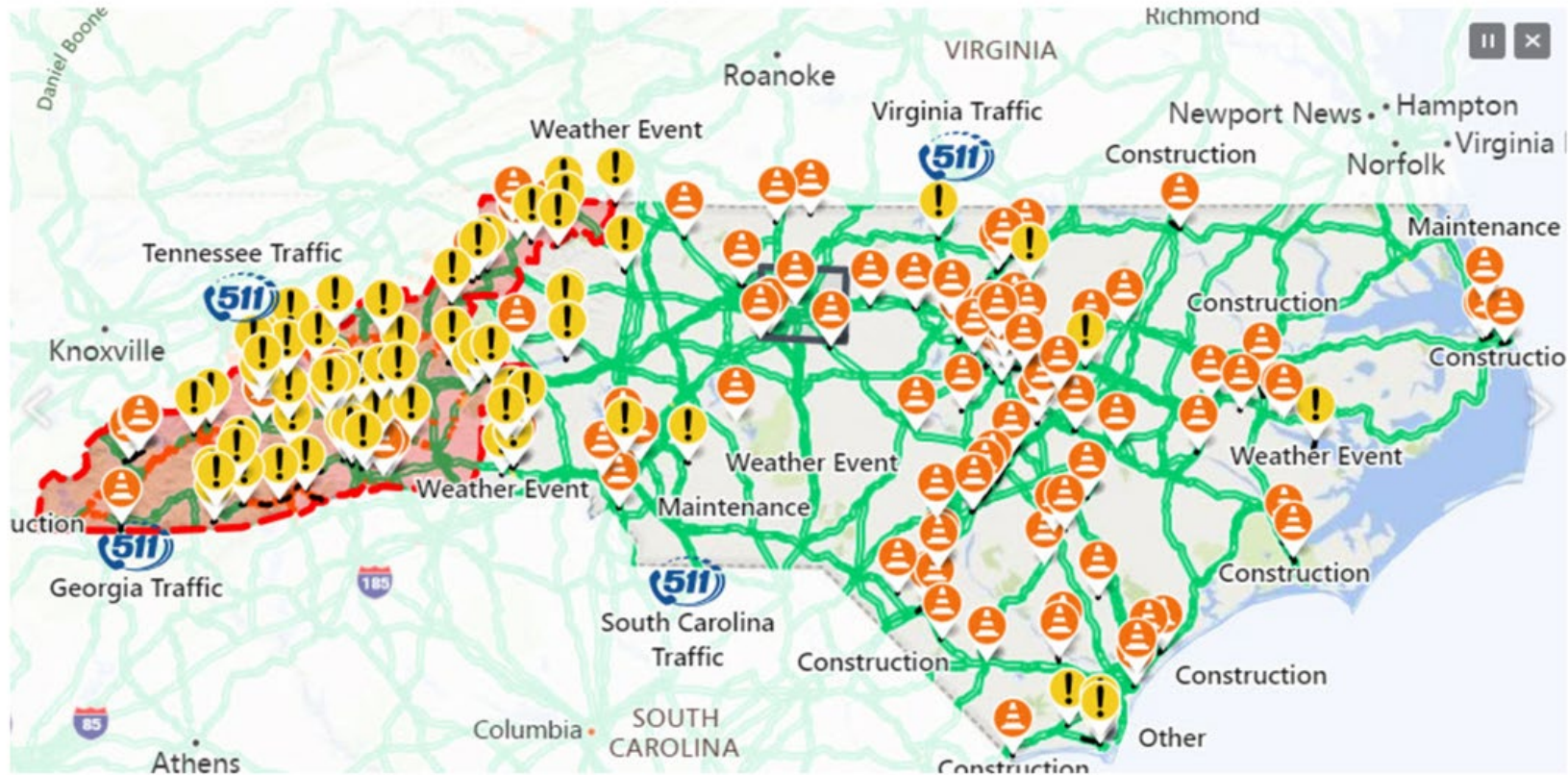


YOU CANT GET

THERE FROM HERE

Travel

Travel



NCDOT map shared on Saturday, September 28, 2024 shows the extent of damage caused by Helene. (Graphic: NCDOT) Item 1 of 3

Per NCDOT - over 1,426 roads were closed during Helene
As of Jan. 21st 1,251 roads (87.7%) are reopened

Lessons Learned

- Chinooks and unsecured tents are not a good combination
- 7.5 KW Generators are not large enough to power, MSU, sleeping quarters and additional needs.
- When deploying in WNC, pack for all seasons.
- Do NOT trust GPS for directions
- CASH CAN STILL BE KING IN SOME SITUATIONS





Moving from Response to Recovery



Ongoing Impacts from Helene



**Decreased WNC tourism
except for “disaster tourism”**



**Decreased outdoor
recreational opportunities**

Many trout streams will not be stocked
this year

Log jams & fallen timber block access for
hikers, hunters and rescuers.

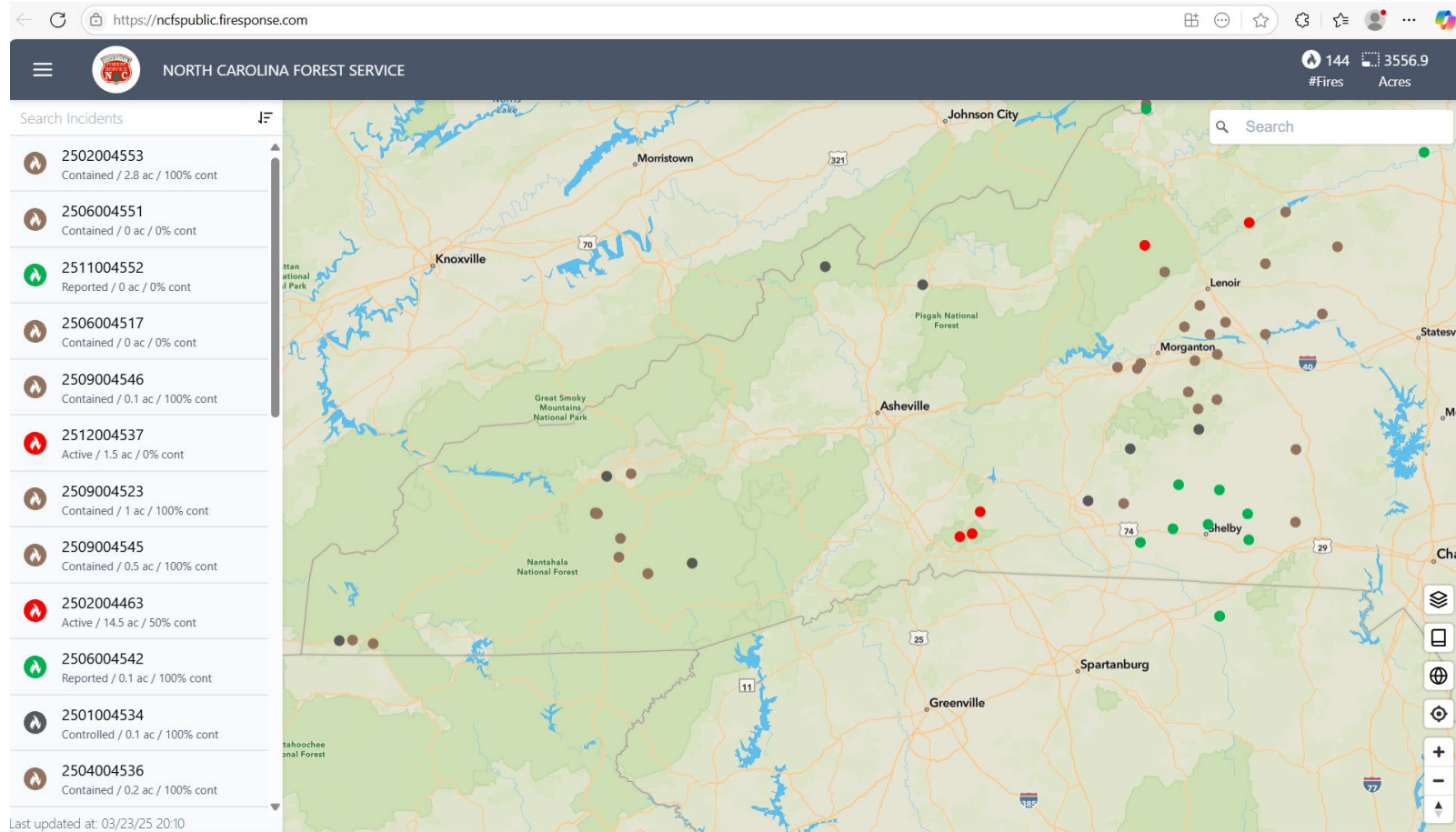


**Increased number of extreme
brush fires**



**Catastrophic loss of crops,
infrastructure, markets — and
even topsoil.**

Active Forest Fires in WNC as of 3/23/25 2000 hrs



MEGA VALUE

32

TOASTER
PASTRIES

pop.
tarts

Frosted
Cherry
370
CALORIES
PER 2 PASTRIES

Frosted
Strawberry
370
CALORIES
PER 2 PASTRIES



16 FROSTED
CHERRY

Artificially Flavored / Con sabor artificial

16 FROSTED
STRAWBERRY



★ ★ ★
PROUDLY
BAKED
IN THE
USA

32 TOASTER PASTRIES
PASTELILLOS PARA TOSTAR

1-27 OZ (1 LB 11 OZ) (768g) BOX/CAJA FROSTED CHERRY
1-27 OZ (1 LB 11 OZ) (768g) BOX/CAJA FROSTED STRAWBERRY
NET WT/PESO NETO 54.1 OZ (3 LB 6.1 OZ) (1.53kg)

On behalf of Western North Carolina:

A HUGE & HEARTFELT THANKS
FOR ALL THAT EACH OF YOU HAVE
DONE & CONTINUE TO DO TO
SUPPORT US!

Thank You!