

BIAS YARDAGE CHART

2-1/4" Wide Strip

Length

72"	13.5" sq.
112"	16.5" sq.
162"	20" sq.
220"	23" sq.
288"	26" sq.
364"	29.5" sq.
450"	32.5" sq.
544"	35.5" sq.

2-1/2" Wide Strip

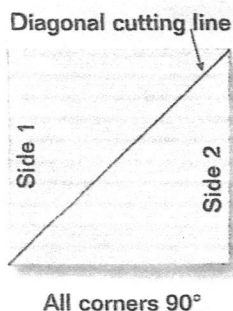
Length

80"	15" sq.
125"	18.5" sq.
180"	22" sq.
245"	25.5" sq.
320"	29" sq.
405"	32.5" sq.
500"	36" sq.

SKILL BUILDER

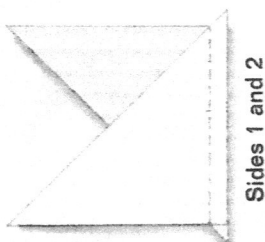
Continuous Sew-and-Cut Bias Binding

A fast way to make bias bindings is to sew and cut them in one continuous process.

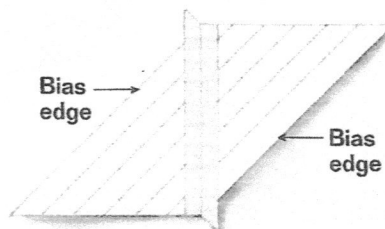


Step 1. Start with a square, making sure that the corners are right angles (90 degrees). Mark the two opposite straight edges as shown.

Step 2. Mark the diagonal carefully with a long ruler or yardstick, and cut on this line.



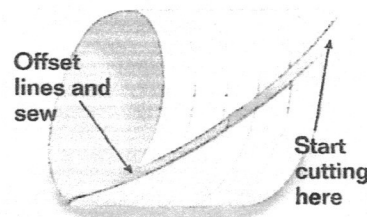
Step 3. Using a short stitch length (about 14 stitches per inch), sew the two marked straight edges with right sides together.



Mark lines on wrong side of fabric

Step 4. Press the seam open and mark lines on the wrong side of the fabric parallel to the bias edges, making the space between the lines equal to the width of the desired bias strips.

Step 5. Bring the right sides of the non-bias edges together to make a tube of fabric. Shift the edges so that the top of one aligns with the first marked line of the other. Be sure the edges are in the proper position for stitching. Sew the edges together in this position and press the seam open.



Step 6. Start cutting at one uneven end along the marked line. As you progress, you will be cutting one long continuous length of bias.

Note: To estimate the amount of binding a square will produce, multiply the length of two of the sides together. Divide the result by the width of the binding you want. For example, using a 30-inch square, multiply 30 x 30 to get 900. Divide 900 by 2 to get 450, the length of 2-inch binding you would get from a 30-inch square.