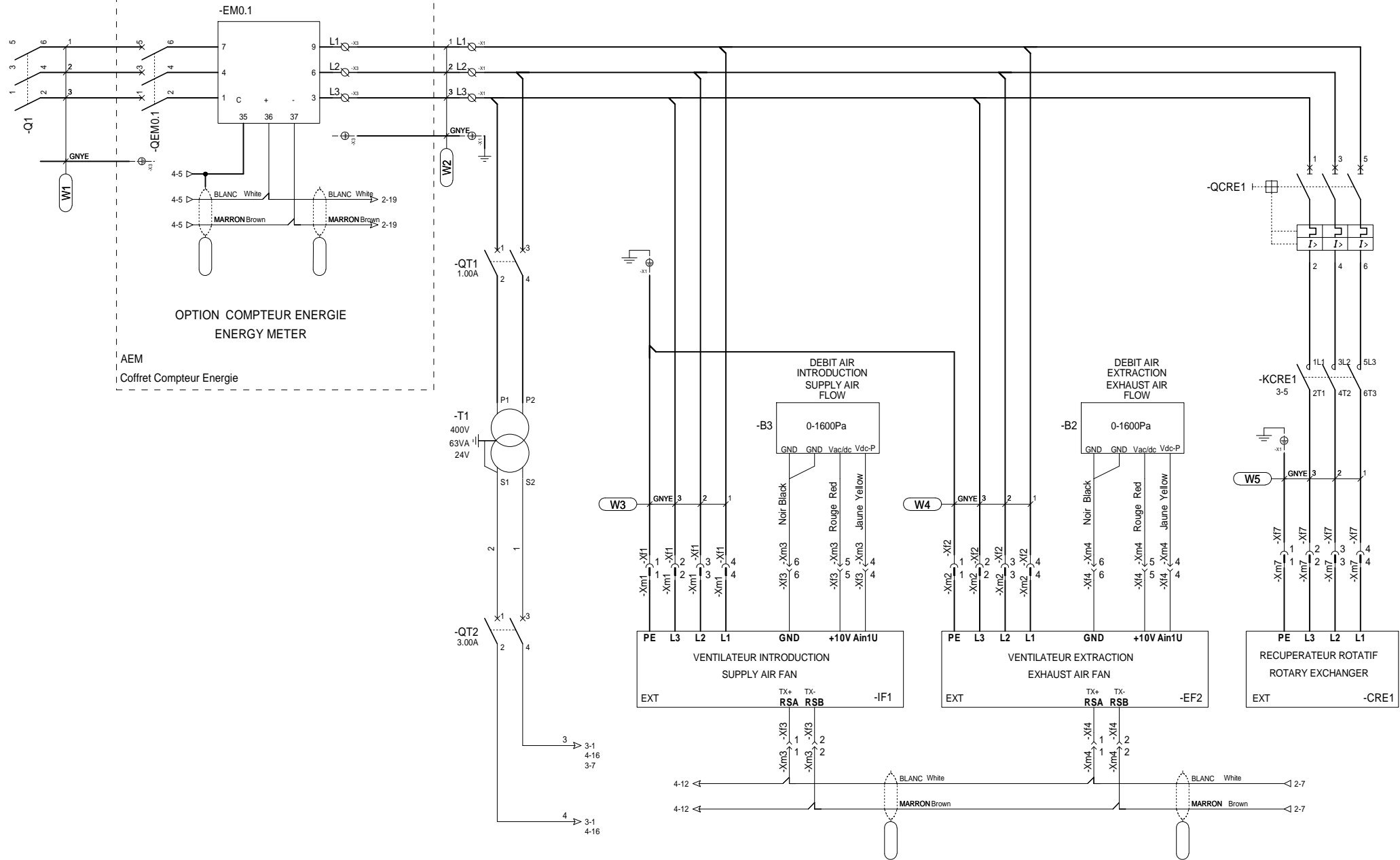


# SCHEMA ELECTRIQUE ELECTRICAL DIAGRAM



				NUMERO DE COMMANDE : ORDER NUMBER :			
				CLIENT : CUSTOMER :			
				APPAREIL OU UNITE : TYPE OF UNIT :	FLOWAY Access RHE DX 5000/7500 M/H		
				TENSION : SUPPLY :	3~ 400V 50Hz		
				REFERENCE : REFERENCE :	2 CIRCUITS		
				DESIGNATION : DESIGNATION :			
NSC-AGP	20/01/2020	01	Modification sondes débit				
BFR-AGP	23/04/2018	00	CREATION				
DESS	DATE	IND	MODIFICATION				
			CREATEUR : CREATED BY : BFR-AGP	LEGENDE : LEGEND :	NUMERO DE SCHEMA DIAGRAM NUMBER	INDICE INDEX	FOLIO FOLIO
			DATE : 23/04/2018 DATE :		7542587	01	1 / 7

SUPPLY 3 ~ 400V 50Hz ALIMENTATION 3 ~ 400V 50Hz  
 RACCORDEMENT SUR LE SECTIONNEUR CONNECTION ON ISOLATOR



COFFRET PRINCIPAL

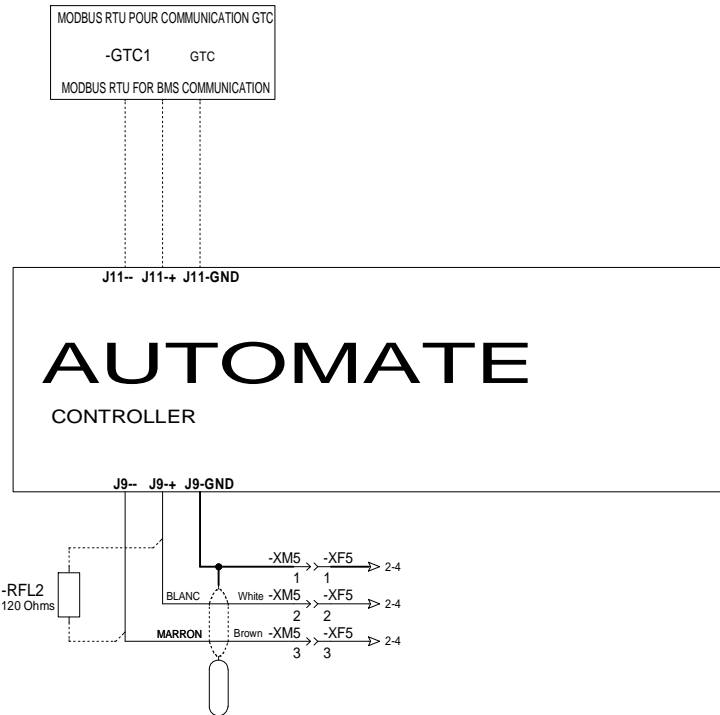
DESIGNATION :  
 DESIGNATION :



**PUISSANCE POWER**

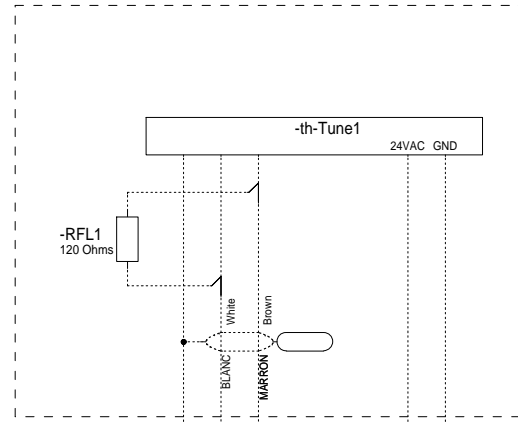
NUMERO DE SCHEMA DIAGRAM NUMBER	INDICE INDEX	FOLIO FOLIO
7542587	01	2 / 7



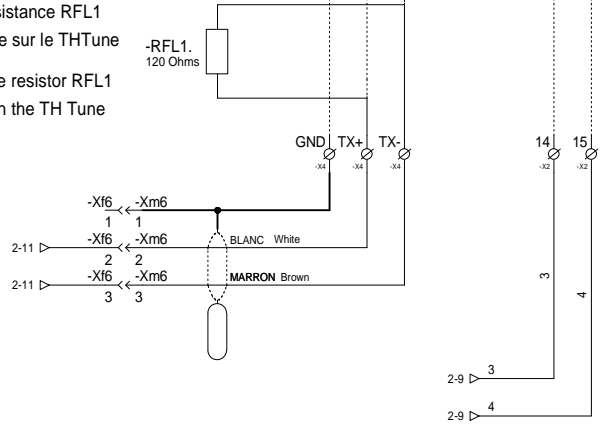


Si le faisceau a une longueur supérieure à 100M, la résistance RFL2 (non fourni) doit être installée  
 If the network cable is longer than 100M, the RFL2 resistor (Not supplied) must be set

**OPTION COMMANDE DEPORTEE EN AMBIANCE (TH-TUNE)  
 OPTION IN-ROOM REMOTE DISPLAY (TH-TUNE)  
 OPTION**



Si L'option ThTune est presente la resistance RFL1 est à enlever du Bornier et doit être mise sur le TH Tune  
 If TH Tune's option is present, remove resistor RFL1 from the terminal and place it on the TH Tune



COFFERT PRINCIPAL

DESIGNATION :  
 DESIGNATION :

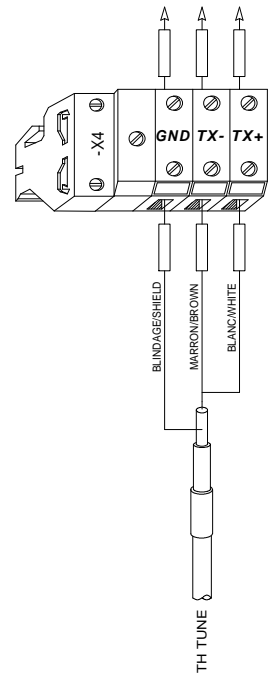
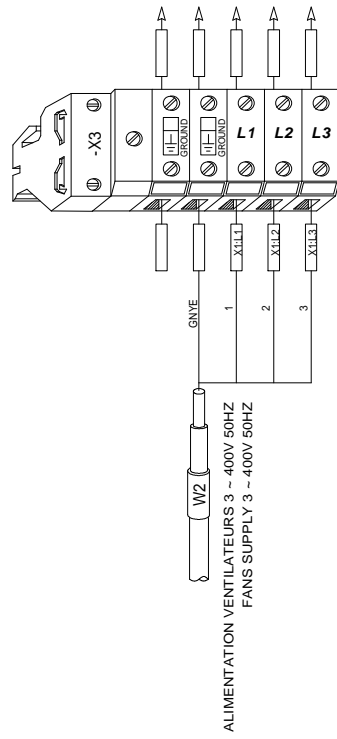
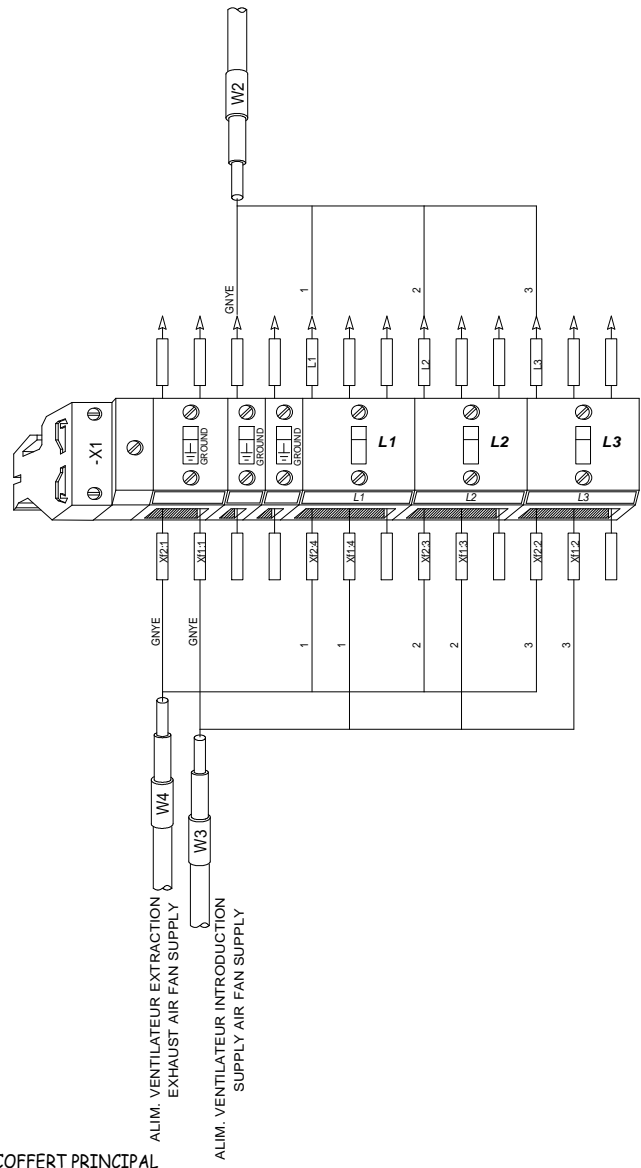


**COMMANDE -2  
 CONTROL -2**

NUMERO DE SCHEMA  
 DIAGRAM NUMBER  
**7542587**

INDICE  
 INDEX  
**01**

FOLIO  
 FOLIO  
**4/7**



DESIGNATION :  
DESIGNATION :

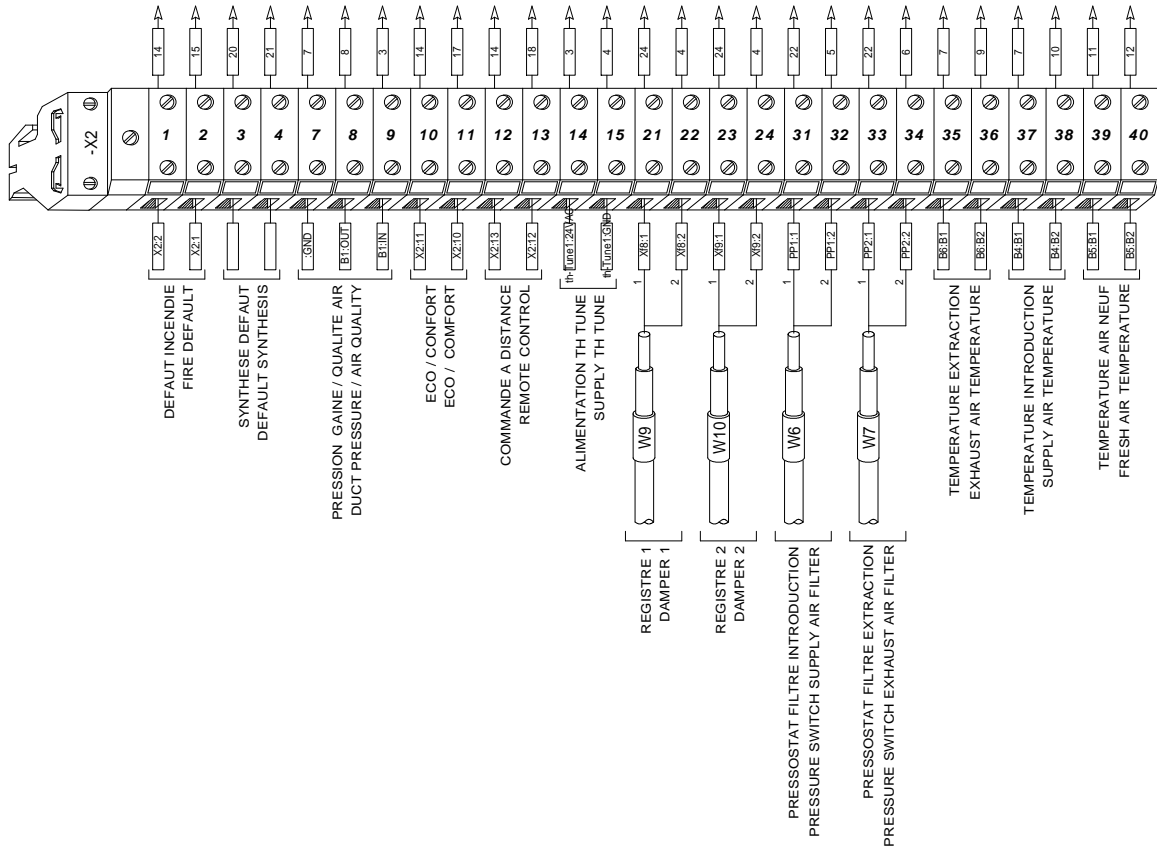


BORNIER : X1 - X3 - X4 PUISSANCE  
TERMINAL : X1 - X3 - X4 POWER

NUMERO DE SCHEMA  
DIAGRAM NUMBER  
7542587

INDICE  
INDEX  
01

FOLIO  
FOLIO  
5/7



COFFERT PRINCIPAL

DESIGNATION :  
DESIGNATION :

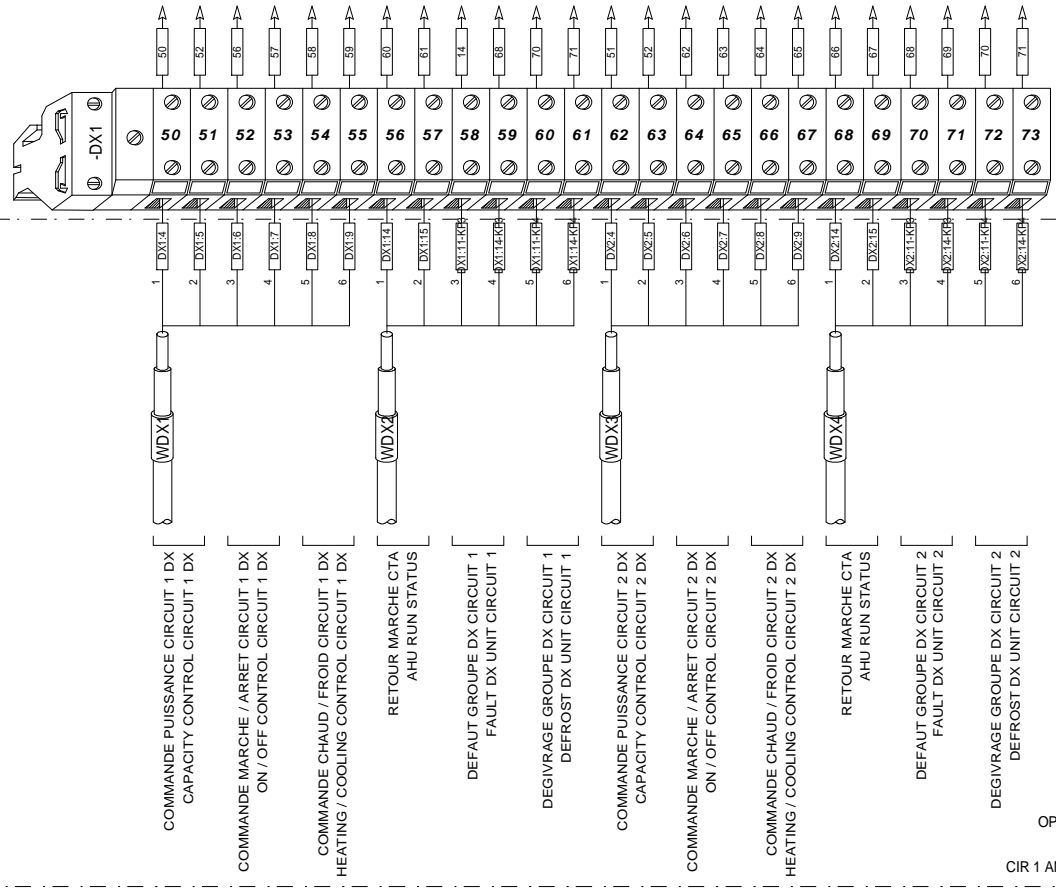


**BORNIER : X2 COMMANDE  
TERMINAL : X2 CONTROL**

NUMERO DE SCHEMA  
DIAGRAM NUMBER  
**7542587**

INDICE  
INDEX  
**01**

FOLIO  
FOLIO  
**6/7**



OPTION COFFRET CIR 1 ET CIR 2  
RBC-DXC031  
CIR 1 AND CIR 2 ELECTRICAL BOX OPTION

COFFRET PRINCIPAL

DESIGNATION :  
DESIGNATION :



BORNIER : DX1 GROUPE DX CIR1 ET CIR2  
TERMINAL : DX1 DX UNIT CIR1 AND CIR2

NUMERO DE SCHEMA  
DIAGRAM NUMBER  
7542587

INDICE  
INDEX  
01

FOLIO  
FOLIO  
7/7