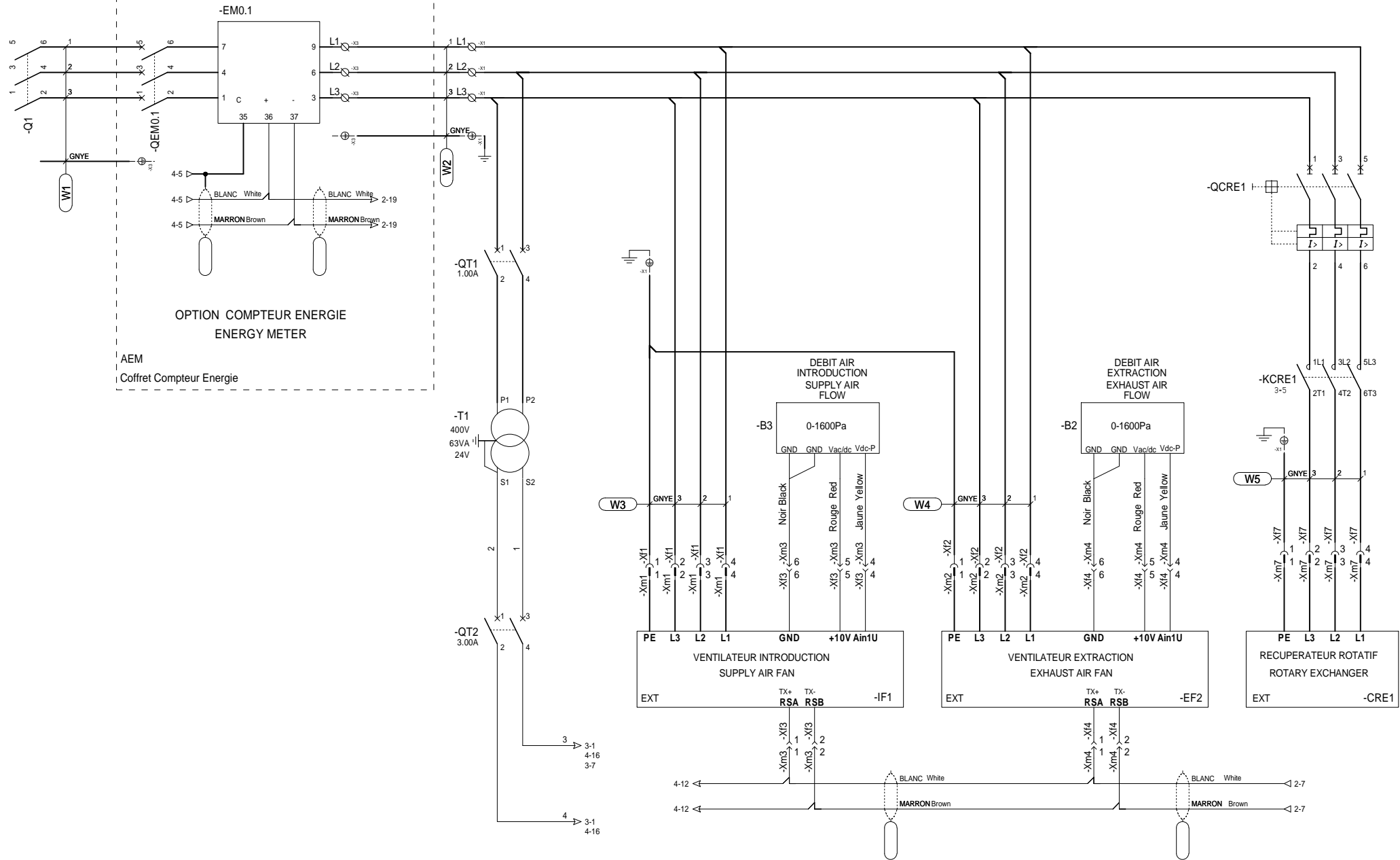


SCHEMA ELECTRIQUE ELECTRICAL DIAGRAM



				NUMERO DE COMMANDE : ORDER NUMBER :				
				CLIENT : CUSTOMER :				
				APPAREIL OU UNITE : TYPE OF UNIT :	FLOWAY Access RHE DX 2000/3000/5000 M/H			
				TENSION : SUPPLY :	3~ 400V 50Hz			
				REFERENCE : REFERENCE :	1 CIRCUIT			
				DESIGNATION : DESIGNATION :				
NSC-AGP	20/01/2020	01	Modification sondes débit					
BFR-AGP	23/04/2018	00	CREATION					
DESS	DATE	IND	MODIFICATION					
				CREATEUR : CREATED BY : BFR-AGP	LEGENDE : LEGEND :	NUMERO DE SCHEMA DIAGRAM NUMBER 7519859	INDICE INDEX 01	FOLIO FOLIO 1 / 6
				DATE : 23/04/2018 DATE :				

SUPPLY 3 ~ 400V 50Hz ALIMENTATION 3 ~ 400V 50Hz
 RACCORDEMENT SUR LE SECTIONNEUR CONNECTION ON ISOLATOR



OPTION COMPTEUR ENERGIE
 ENERGY METER
 AEM
 Coffret Compteur Energie

COFFRET PRINCIPAL

DESIGNATION :
 DESIGNATION :



PUISSANCE
 POWER

NUMERO DE SCHEMA
 DIAGRAM NUMBER

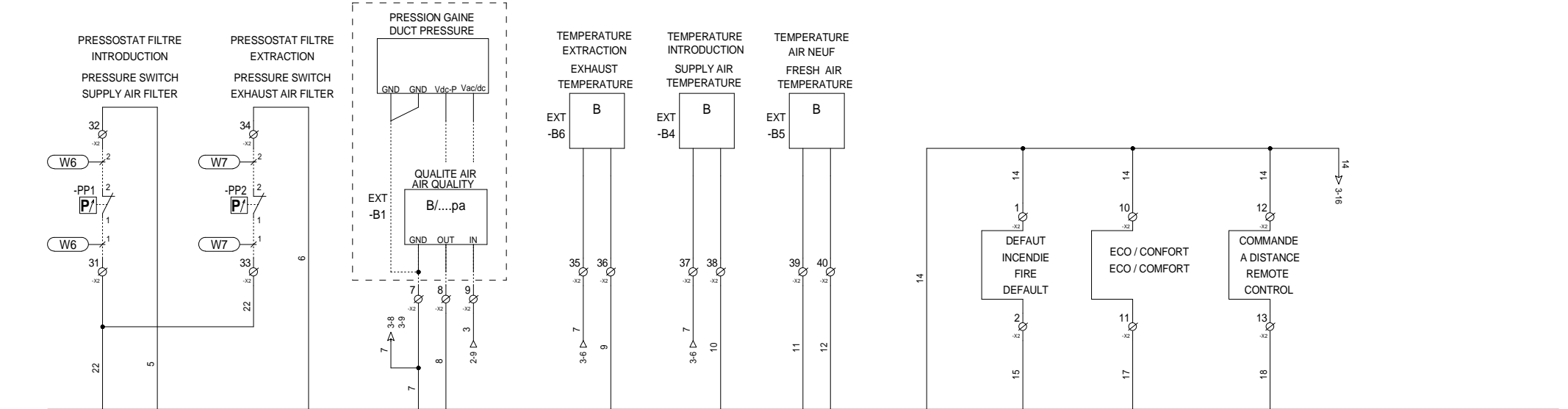
7519859

INDICE
 INDEX

01

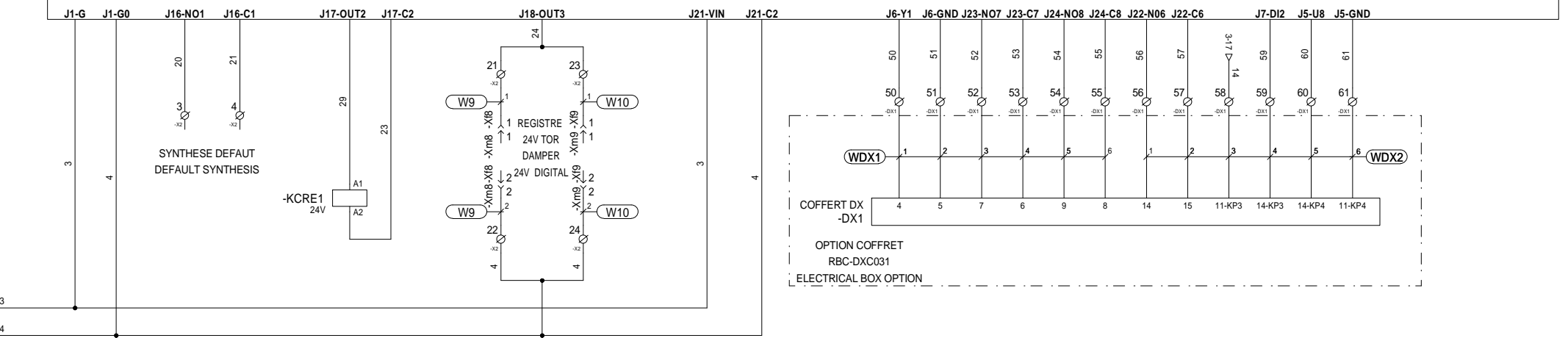
FOLIO
 FOLIO

2/6



AUTOMATE

CONTROLLER



- 1L1 + 2F1 2-19
- 3L2 + 4T2 2-19
- 5L3 + 6T3 2-19

COFFERT PRINCIPAL

DESIGNATION :
DESIGNATION :

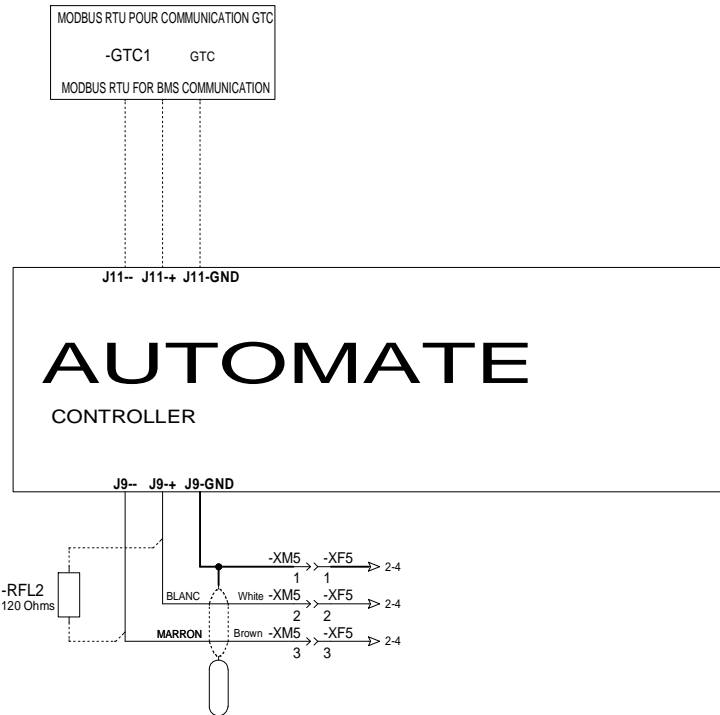


COMMANDE CONTROL

NUMERO DE SCHEMA
DIAGRAM NUMBER
7519859

INDICE
INDEX
01

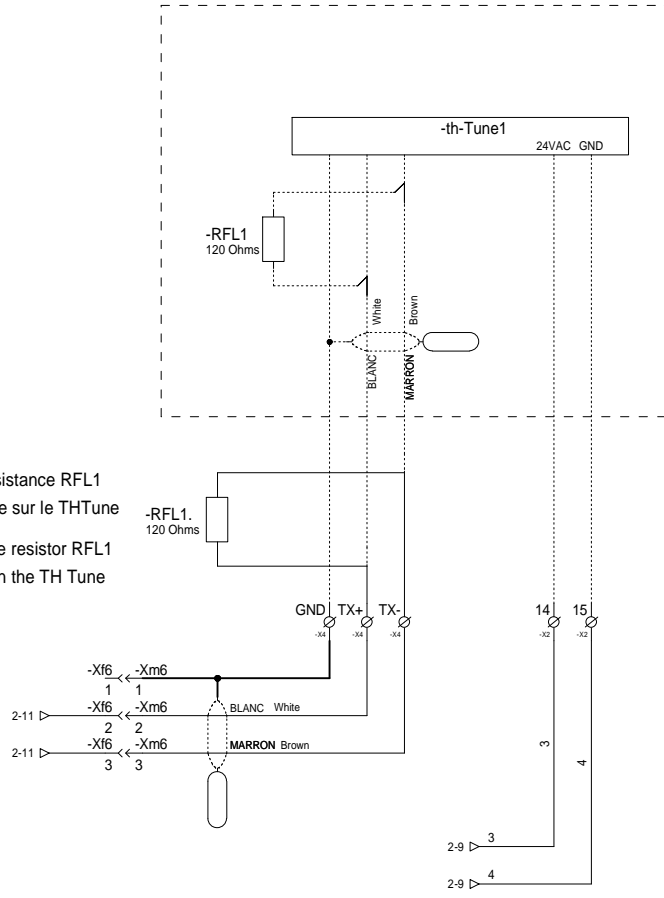
FOLIO
FOLIO
3/6



Si le faisceau a une longueur supérieure à 100M, la résistance RFL2 (non fourni) doit être installée
 If the network cable is longer than 100M, the RFL2 resistor (Not supplied) must be set

**OPTION COMMANDE DEPORTEE EN AMBIANCE (TH-TUNE)
 OPTION IN-ROOM REMOTE DISPLAY (TH-TUNE)
 OPTION**

Si L'option ThTune est presente la resistance RFL1 est à enlever du Bornier et doit être mise sur le TH Tune
 If TH Tune's option is present, remove resistor RFL1 from the terminal and place it on the TH Tune



COFFERT PRINCIPAL

DESIGNATION :
 DESIGNATION :

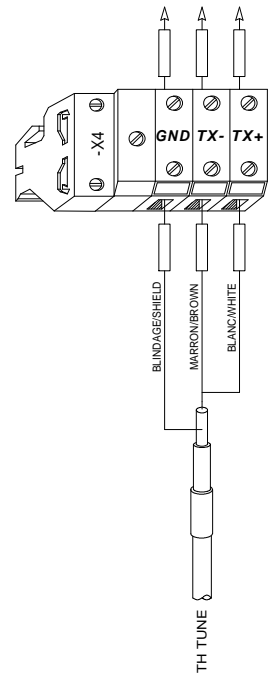
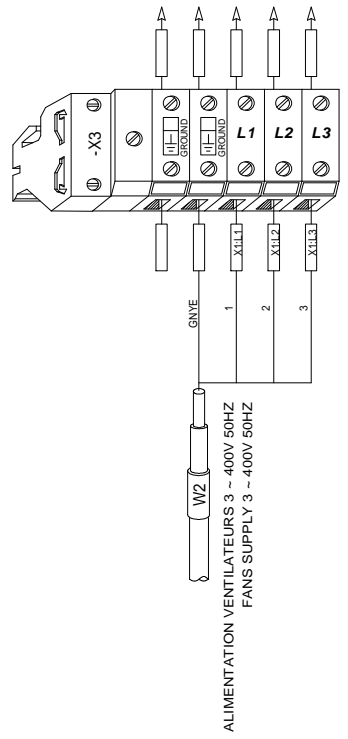
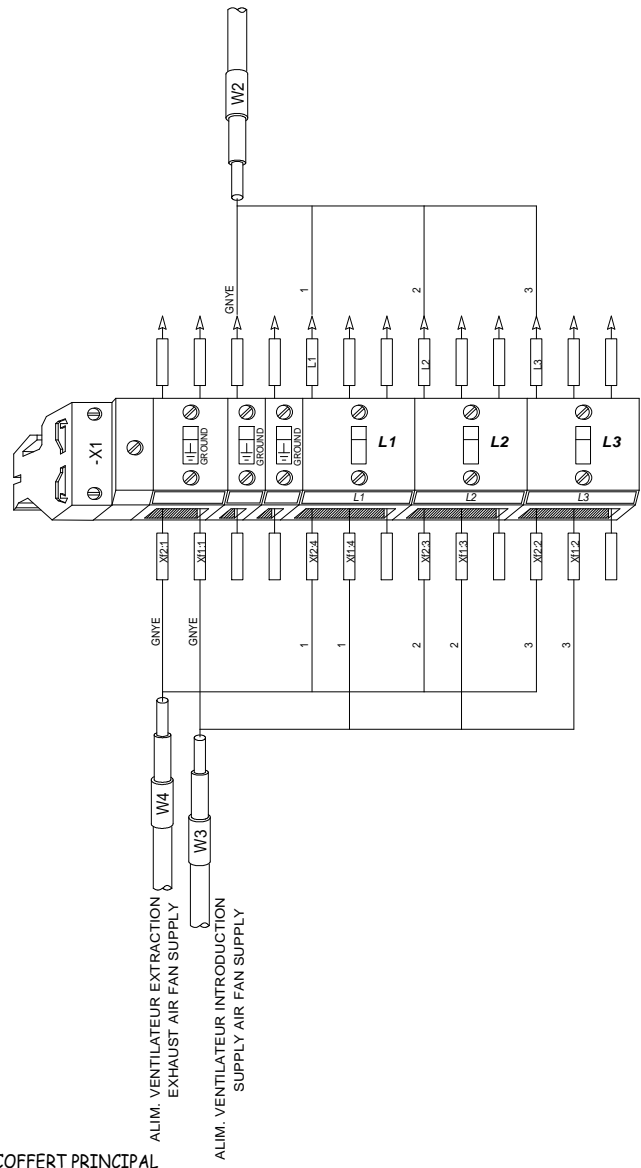


**COMMANDE -2
 CONTROL -2**

NUMERO DE SCHEMA
 DIAGRAM NUMBER
7519859

INDICE
 INDEX
01

FOLIO
 FOLIO
4/6



COFFERT PRINCIPAL

DESIGNATION :
DESIGNATION :

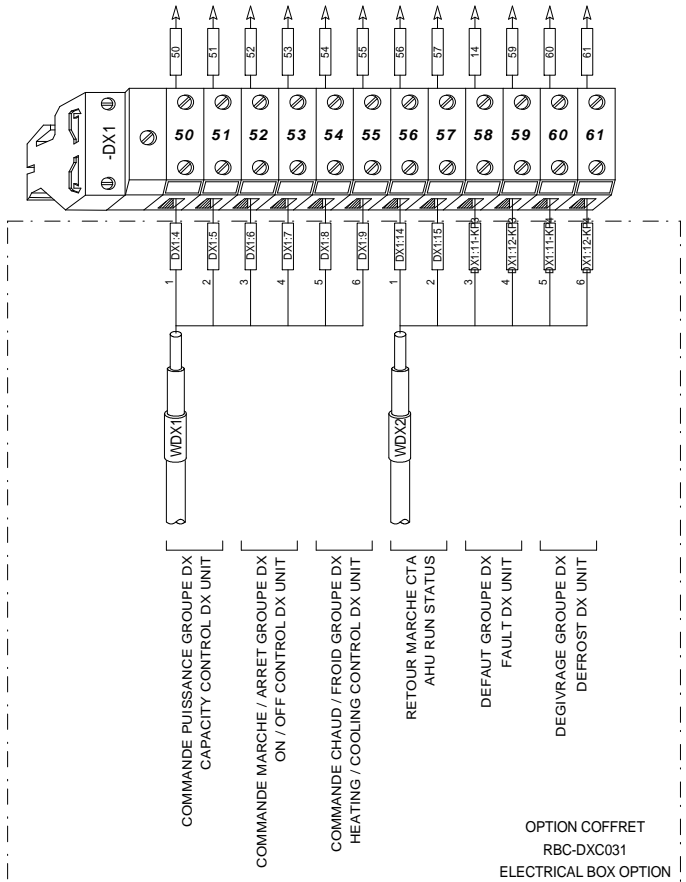
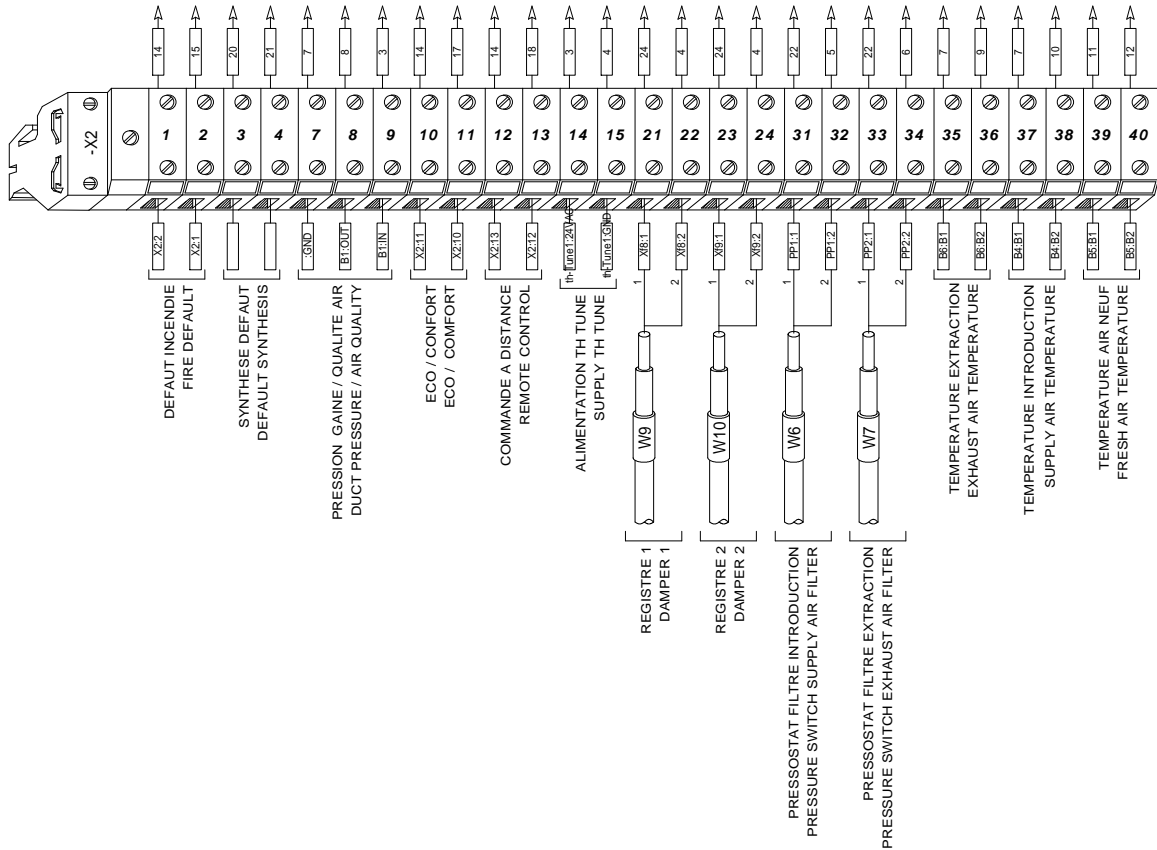


BORNIER : X1 - X3 - X4 PUISSANCE
TERMINAL : X1 - X3 - X4 POWER

NUMERO DE SCHEMA
DIAGRAM NUMBER
7519859

INDICE
INDEX
01

FOLIO
FOLIO
5/6



COFFRET PRINCIPAL

DESIGNATION :
DESIGNATION :



**BORNIER : X2 COMMANDE ET DX1 GROUPE DX
TERMINAL : X2 CONTROL AND DX1 DX UNIT**

NUMERO DE SCHEMA
DIAGRAM NUMBER
7519859

INDICE
INDEX
01

FOLIO
FOLIO
6 / 6