

U
N
I
V
E
R
S
I
T
A
L
C
O
M
F
O
R
T



→ NEW COMFORT UNITS

Major Line

Sheer design
sustainable innovation



New comfort units

Major Line

Ultramodern conception &

CIAT's Major Line marks a revolution in comfort units. With its pure lines and an ecologically-based design that meet new building requirements, Major Line is the solution you've been waiting for.

A result of CIAT's sustainable development philosophy:

a major component of ecologically-efficient systems

Major Line embodies the fundamentals of CIAT, one of France's leading industrial groups and providers of sustainable comfort solutions.

- **Energy optimisation:**
Major Line consumes 20% less electricity than its predecessors
- **Comfort:** Major Line is not just attractive and efficient, it is extremely quiet, generating 2 dB less noise
- **Indoor air quality:**
it filters the air to protect the well-being of occupants

Unique experience:

perfecting comfort units for 50 years

Since the 1960s, CIAT has been continuously innovating to make its comfort units ever-more efficient. Major Line, the latest addition to the Major range, meets all expectations:

- a **broad range** with cooling capacities up to 10 kW
- an **array of innovations packed** into a more compact and efficient product
- **materials selected** for their low environmental impact



ecodesign for sustainable well-being

The solution you've been waiting for:

construction and renovation projects and adapted to market requirements

Major Line comes in both cased and uncased versions and is completely versatile:

- **Offices:** blends in perfectly in new and renovated buildings of all types
- **Hotels:** ideal for installation in false ceilings just inside the rooms
- **Residential:** the cased version is ideal for cooling indoor living spaces

Hysys®: the first complete water circulation system for heating, comfort and air quality

Major Line integrates perfectly into Hysys® office, CIAT's solution that optimises HVAC systems in new and renovated buildings. Hysys® office strikes the right balance between energy production and air handling and is an essential solution for optimising comfort and performance.



BREEAM 

A sustainable solution:

at the heart of environmentally-responsible buildings

Major Line's energy savings and ecodesign make it the centrepiece of environmentally-sustainable buildings built in accordance with the following French and international standards:

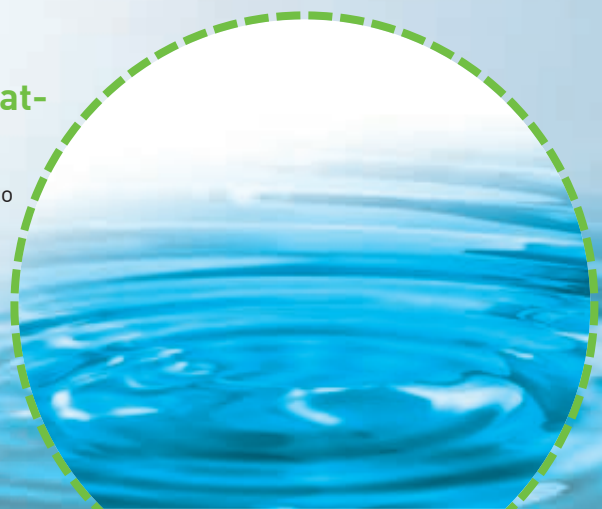
- HQE approach (French HQE label)
- HPE, THPE (which go beyond the RT 2005 thermal regulation), EFFINERGIE, BBC, BEPOS, and other energy labels
- European labels: MINERGIE (CH), PASSIVHAUS (D), BREEAM (GB), LEED (US)
- European Directive on CO₂ quotas.
- ISO 14001 and OHSAS 18001 certified production facility

A fundamental technology:

water, the best and most ecological heat-transfer medium

The only technology to be passed on from generation to generation is all-water operation:

- best heat-transfer medium
- no refrigerant circulating inside buildings
- safer indoor conditions
- zero environmental impact
- economical and ecological
- simplified installation and maintenance



Cased range

ideal for renovation projects



Major Line's state-of-the-art technology is housed in a highly advanced ecologically-based design. Its elegant lines blend in perfectly with modern interiors and make Major Line the centrepiece of successful commercial and residential renovation projects.

And to ensure that it integrates perfectly, Major Line also features the latest innovations in acoustics to ensure ideal operating silence and optimum comfort.

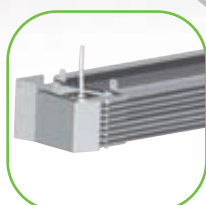
CV



CH



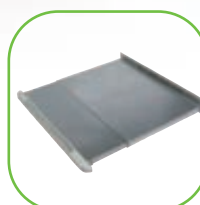
Flush-mount V30 thermostat



Fresh air/return air mixing box



Assembly 1D, front grille



Self-regulating fresh air inlet



Control valve kit

Other accessories are available for custom assemblies



Major Line

From major i

CIAT channelled all its innovative capacity i and stylish, Major Line leaves nothing to ch

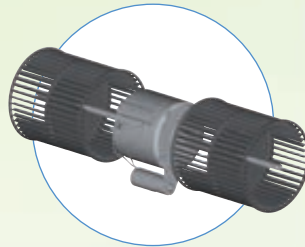
Innovative design

- Slender and sleek: a genuine advance in design.
- Stylish, modern look that blends in with all interiors
- Two-material, two-colour RAL 9010 (White) and RAL 7035 (Grey white) casing
- Discreet and robust design.

Innovative Design

New-generation fan

- New contoured ABS scroll housing designed for optimum output and performance
- HEE (high energy efficiency) ABS impellers with airfoil blades for reduced electricity consumption.



High Performance coils

- Up to 15% larger coil face area
- Wide choice of coils for customised water ranges



Insulated frame tray

- ABS construction with insulation (over 20 mm)
- Suitable for all climates
- Vertical or horizontal installation



-2 dB

20% less energy

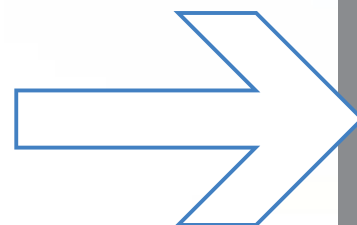
Enhanced safety

- Electrical connections located in one box
- Special tool required to open the electrical box



Ecodesign

- Major Line is 85-95% recyclable depending on its size
- 20% fewer raw materials for the same robustness
- Easily tracked and dismantled at the end of its life



TECHNOFOCUS
Major Line

Capa
(in a
• Co
0.
• He
1 t
• He
1 t

Innovations comes a decisive breakthrough

into designing this new-generation comfort unit. More efficient, ecological and more comfortable when it comes to diffusing ideal comfort.

Installation & Maintenance...make your life easier

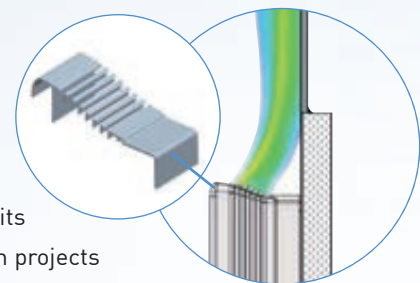
Major Line is designed for easy maintenance:

- Casing comes off easily with a 1/4-turn of the two screws
- Quick, easy access to the filter
- Speeds wired to the electrical terminal block for easy access and custom changes on site
- Two-piece scroll housings allow the individual replacement of fan motor assembly components



Versatile models

- Available cased or uncased
- Top or front return air inlets
- A single model for vertical or horizontal installation
- A wide selection of accessories, delivered fitted or in kits
- Left or right hydraulic connections, ideal for renovation projects



A new generation of comfort

- 2 dB quieter
- Diffusion grille optimised by our R&I centre for enhanced overall comfort in accordance with ISO 7730
- Extensive control over the supply air temperature and air stream eliminates discomfort

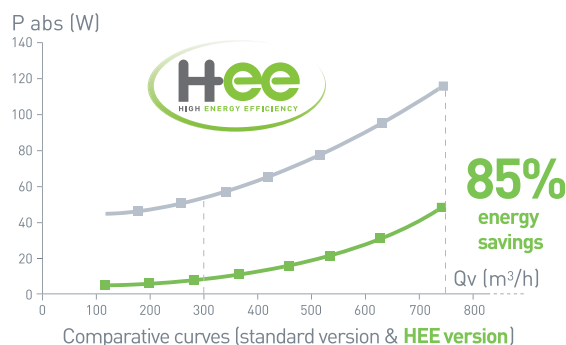
CIAT: designer of control solutions

CIAT offers a complete range of controls, from V30 to V3000, to handle all your applications (flush-mount or wall-mount terminals).

Compliance with energy conservation requirements

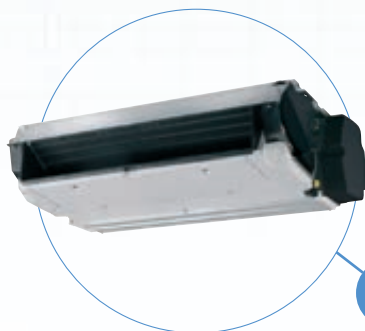
- A compact unit designed for energy-efficient buildings
- Intelligent concept reduces motor input power by 20%
- Low-power heating elements for better compliance with new buildings
- CIAT's optional **Hee** brushless motor reduces energy consumption by as much as 85%.

Capacity range of Major Line (in accordance with EUROVENT conditions):
Cooling capacity (2-pipe and 4-pipe unit):
6 to 8 kW (27°C, WB19, 7/12°C)
Heating capacity (2-pipe unit):
6 to 12 kW (air 20°C, water 50°C)
Heating capacity (4-pipe unit):
6 to 8 kW (air 20°C, water 70/60°C)

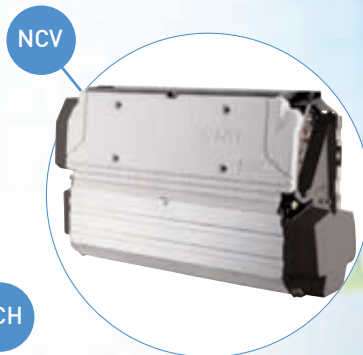


Uncased range completely invisible

Hidden inside a false ceiling or a closed unit, the uncased version of Major Line takes discretion to the utmost. It is perfectly suited to new commercial and hotel construction projects and delivers absolute comfort in complete silence. Very cost-effective and simple to install, Major Line accommodates all architectural projects and allows ample freedom for interior design.



NCH



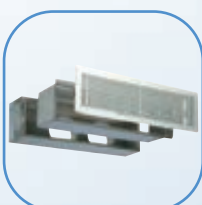
NCV



V30 wall thermostat with dial



Supply plenum for circular ducts



Air diffusion kit



Condensate pump



Flexible hydraulic connections

Other accessories are available for custom assemblies

CIAT Group

An expert division, a leader in Europe,
a universal solution

Major Line was developed by CIAT's Air Technologies Division and is manufactured at the Group's ISO 14001 and OHSAS 18001 certified main production facility in France.



CIAT Air Technologies

The expert in cooling, heating and air handling solutions for optimum comfort

All of CIAT's expertise and know-how in the diffusion of comfort and air handling is centred at its Air Technologies division. At the heart of the Group, this division works daily to develop and install sustainable comfort and air quality solutions.

CIAT Group

An international reach

Boasting 75 years of experience, 2400 employees, 9 production sites, and one of Europe's largest Research and Innovation Centres, the CIAT Group provides sustainable comfort solutions to nearly 70 countries.

When you place your trust in CIAT, you benefit from its unique network of experts in France and around the world and a range of exclusive services that ensure that your equipment and systems remain at peak performance.



BP14 - 01350 Culoz - France
info@ciat.fr - www.ciat.com