



2025

annual impact report

EMPOWHER ENTERPRISES INC





what's inside

- 03 Welcome Note**
- 04 Our Board**
- 05 Program Leads**
- 06 Our Story**
- 07 Mission and Vision**
- 08 Executive Summary**
- 09 Our Mandate and Giving**
- 10 Journey Totes**
- 11 Power A Wish**
- 12 Beyond the Bookshelf**
- 13 EmpowHIM**
- 14 Professional Development Workshop**
- 15 EmpowHer Collective**
- 16 Annual Christmas Gala**
- 17 Annual Ty Giveaway**
- 18 Outreach Initiatives**
- 19 Partnerships & Collaborations**
- 20 Financials**
- 21 A Year in Pictures**
- 22 Future Plans & 2026 Goals**
- 23 Sponsor, Community Partners & Donor Thank You**
- 24 Our Community Partners & Sponsors**
- 25 Thank You to Our Volunteers**
- 26 Contact Us**

welcome note

As I reflect on 2025, I am reminded that impact is not built in grand moments. It is built in quiet consistency. It is built when a child in foster care receives a suitcase instead of a trash bag. It is built when a young reader finishes their first full book. It is built when a woman finds her voice again in a room where she once felt small.

EmpowHer Enterprises Inc was founded on a simple but urgent belief: generational cycles can be broken when preparation and opportunity meet at the right time. Our work exists at that intersection. We serve children navigating foster care, families facing economic hardship, and women rebuilding their confidence and stability. We do not offer charity. We offer access, tools, and community.

In 2025, we continued to strengthen our programs with structure and accountability. We expanded partnerships. We deepened our literacy outcomes. We supported youth leadership development. We showed up during the holidays. And we remained committed to serving with excellence and integrity.

This report is more than numbers. It is proof of what happens when a community chooses to care with intention. Every statistic reflects a real person whose story shifted because someone decided to invest.

To our donors, volunteers, partners, and sponsors, thank you. Your generosity did not disappear into overhead. It became suitcases, books, workshops, mentoring sessions, and moments of hope.

There is still work to do. The needs remain real. But so does our commitment. We move forward steadily and determined.

With gratitude,



Zaza Farrell
Chief Executive Officer



BOARD OF DIRECTORS

our board



TYRELL CLEVELAND
VICE PRESIDENT

With over 15 years of hair styling experience, Tyrell opened The Hair Loft by Tyrell Lamar in November 2013. Tyrell is also the Director of EmpowHIM, one of EmpowHER's signature programs, which is dedicated to empowering young men through a comprehensive system of support and inspiration.



PRINCESS DUNCANSON
CHIEF EMPOWERMENT OFFICER

Princess Duncanson is a woman whose presence blends strength, warmth, and purpose. Grounded in faith and family, she balances her roles as a devoted wife and mother with her work as an author, licensed realtor, certified professional coach, and partner of The Duncanson Consulting Group. As a committed board member of EmpowHer, Princess brings a powerful combination of strategic insight and heartfelt leadership.



BISHNU MCKNIGHT
BOARD MEMBER

Bishnu has spent over 18 years preaching the gospel and serving in leadership, grounding his life in faith and devotion. In 2019, Bishnu embraced a new mission as a Law Enforcement Officer for the city of Paterson, NJ



VOLUNTEER PROGRAM LEADS

program leads



LORESA DANIEL

**Educational Equity and Content Lead
EmpowHer Collective**

Loresa Daniel serves as the Educational Equity and Content Lead for the EmpowHer Collective, where she shapes the vision and structure behind our educational programming and content strategy. At EmpowHer, she architects curriculum for Educational Equity and Professional Development programming, ensuring every lesson and resource advances our mission to dismantle generational barriers.



KIWANDA "WANDA" YOUNG

Community Contributor. EmpowHer Collective

Meet Kiwanda Young, a certified credit repair consultant based in Virginia. Her mission is to help others achieve their financial goals while providing support and inspiration. Kiwanda also serves as an admin for the EmpowHer Collective.



EmpowHer Collective
Inspiring Change

Our story

EmpowHer Enterprises Inc did not begin as an idea on paper. It began with moments I could not ignore.

Years ago, I witnessed a child being removed from a home. There were no suitcases. No careful packing. Just a black trash bag stuffed with dirty clothes, rushed and wrinkled. That bag held everything that the child owned. I remember standing there thinking, this cannot be how we treat a child in crisis.

I could not shake the look in that child's eyes. Confusion. Embarrassment. Fear. No child should have to carry their story in a garbage bag. No child should feel disposable in the middle of an already traumatic transition.

That moment planted the seeds for Journey Totes and EmpowHer.

But there was another moment...

I once worked closely with a young girl who had already decided she was not enough. Not smart enough. Not pretty enough. Not capable enough. She rarely made eye contact. She spoke softly, almost apologetically. When asked about her dreams, she shrugged and said, "I do not really have any."

That broke my heart in a different way.

We began working on small things. Affirmations. Vision exercises. Helping her identify her strengths. Teaching her how to sit up straight, speak clearly, and own her voice. I watched her slowly shift. One day, she raised her hand during a group session and shared her goal of becoming a nurse. She spoke with clarity. With confidence. With belief.

It was like watching someone turn the light back on inside herself.

That moment shaped our confidence workshops and our commitment to building identity, not just skills.

EmpowHer Enterprises Inc was built from these lived experiences. We exist to break generational cycles of disempowerment by equipping girls, boys, and young women, especially those impacted by foster care, homelessness, and economic hardship, with the tools, confidence, and community they need to thrive.

- Journey Totes restores hope during foster care transitions.
- Beyond the Bookshelf strengthens literacy and educational equity.
- EmpowHIM provides mentoring and life skills training for young men.
- Power a Wish meets tangible needs during critical life moments.
- Our professional development and confidence workshops equip women and young adults to walk into opportunity prepared and assured.

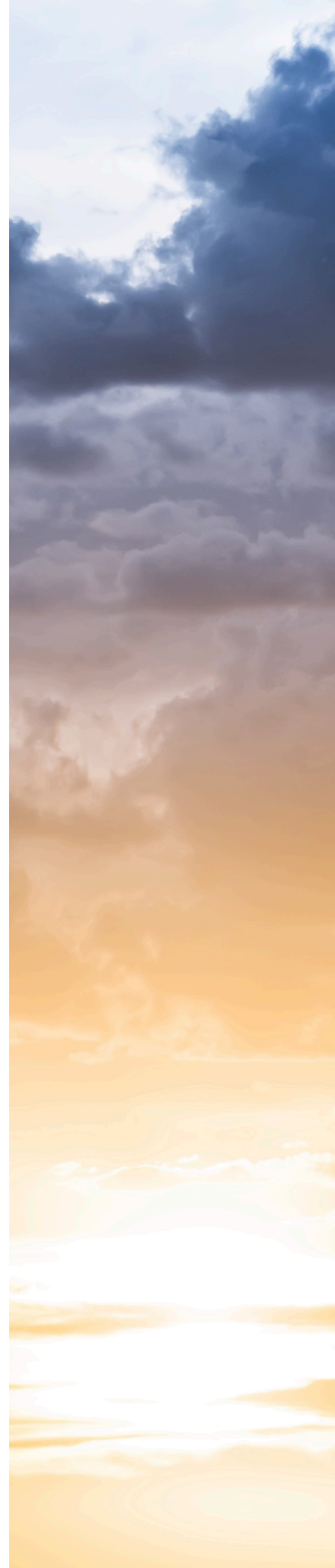
Our story is personal, but our work is strategic. We focus on youth development, life skills training, educational equity, financial literacy, and family readiness because real change does not happen by accident. It happens by intention.

The child with the trash bag reminded us that stability matters.

The young girl who rediscovered her voice reminded us that confidence changes trajectories.

Every program we build is a response to those moments.

We are not just running initiatives. We are rewriting narratives.





mission and vision

MISSION

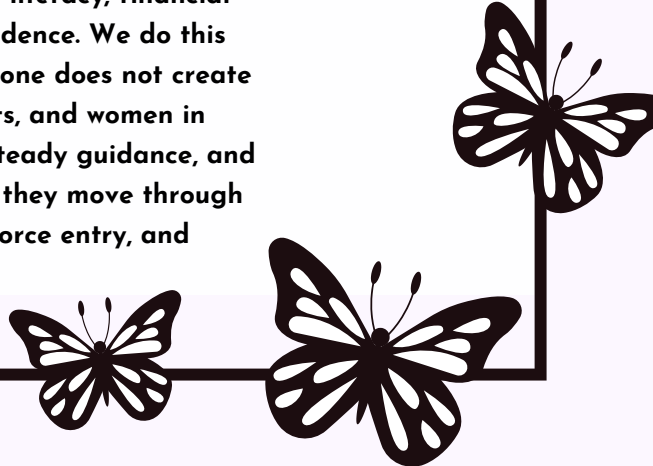


EmpowHer Enterprises Inc is a 501(c)(3) nonprofit organization committed to empowering youth, women, and families in underserved communities, with a focused emphasis on those impacted by the foster care system. Through a continuum of care model, EmpowHer delivers stage-based programming that addresses immediate needs while building long-term stability, confidence, and self-sufficiency.

VISION

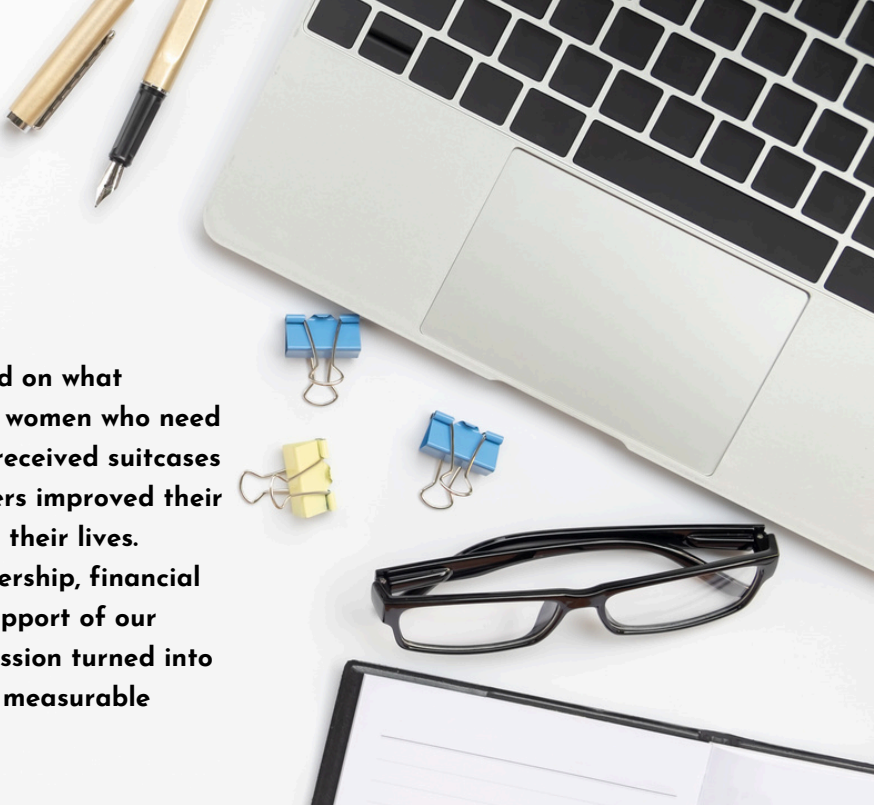


EmpowHer pairs Journey Totes with developmental workshops and mentoring focused on literacy, financial skills, career readiness, and self-confidence. We do this because meeting immediate needs alone does not create lasting change. Children, young adults, and women in transition also need practical tools, steady guidance, and repeated exposure to opportunity as they move through foster care, housing instability, workforce entry, and major life transitions.



executive summary

In 2025, EmpowHer Enterprises Inc stayed focused on what matters most, showing up for children, youth, and women who need consistent support. Children entering foster care received suitcases filled with essentials, not trash bags. Young readers improved their literacy skills and discovered books that reflected their lives. Women and youth gained practical tools for leadership, financial stability, and personal growth. With the steady support of our donors, sponsors, volunteers, and partners, compassion turned into action, and community investment produced real, measurable results.



IMPACT HIGHLIGHTS



In 2025, EmpowHer Enterprises Inc delivered practical support where it was needed most. Children entering foster care received suitcases filled with essential items. Young readers strengthened comprehension and increased the number of books they completed. Women and youth participated in workshops focused on confidence, financial literacy, and leadership development. Families facing financial strain received school supplies and holiday support. Every program delivered measurable reach and reinforced our commitment to consistent, community based service.

PROGRAM SUCCESS



Our programs succeeded because they were structured, intentional, and responsive to real community needs. Beyond the Bookshelf showed measurable literacy improvement. Journey Totes continued to meet urgent placement needs through strong agency partnerships. Workshops produced observable growth in participant confidence and decision making. EmpowHIM mentoring created safe spaces for young men to develop leadership and life skills. Success was not defined by attendance alone, but by engagement, follow through, and outcomes.

STRATEGIC GOALS



Looking ahead, our focus is on strengthening infrastructure, expanding partnerships, and scaling programs responsibly. We aim to increase Journey Tote distribution capacity, deepen literacy tracking and evaluation, formalize youth leadership programming, and grow corporate sponsorship support. We are also committed to enhancing data collection, volunteer training, and governance practices to ensure sustainability. Growth will be steady, structured, and aligned with mission.

our mandate and giving

OUR GIVING MANDATE

EmpowHer Enterprises Inc exists to channel generosity into measurable, community centered impact. Our giving mandate ensures that every dollar, partnership, and volunteer hour advances our mission to dismantle generational cycles of disempowerment for youth and women impacted by foster care, homelessness, and economic hardship.

We prioritize initiatives that restore dignity, expand opportunity, and create long term pathways toward stability and leadership.

OUR GIVING GUIDELINES

Our giving decisions are guided by transparency, accountability, and alignment with mission. We invest in programs and partnerships that demonstrate clear community need, defined outcomes, responsible stewardship of resources, and measurable social impact.

We do not fund for visibility alone. We fund for transformation, sustainability, and equity.

OUR GIVING PHILOSOPHY

We believe giving should be intentional, relational, and restorative. True impact happens when resources are paired with respect, when service is paired with structure, and when generosity is paired with responsibility. Our philosophy centers dignity first. We do not approach communities as recipients of charity, but as partners in possibility.



COMMUNITY PARTNERSHIPS

We cultivate strategic partnerships with schools, shelters, foster care agencies, corporations, and community organizations to expand reach and deepen impact. These collaborations allow us to leverage shared expertise, resources, and networks to deliver coordinated, community rooted solutions that no single organization could achieve alone.



COMMUNITY VOLUNTEERING

We promote hands on service as a core expression of leadership, encouraging members and partners to invest time, talent, and compassion directly into community initiatives.



STEWARDSHIPS

We practice careful stewardship of financial and in kind resources, ensuring that contributions are allocated responsibly, transparently, and in ways that produce lasting community benefit.



When children enter foster care, the transition often happens quickly and without preparation. Many are asked to gather their belongings in trash bags and move into unfamiliar environments with little notice. Journey Totes was created to respond to that moment.

Through this signature program, EmpowHer Enterprises Inc provides high-quality suitcases filled with age-appropriate essentials for children entering or transitioning within the foster care system. Each tote includes personal hygiene items, school supplies, clothing, comfort items, and a handwritten note of encouragement. Items are curated based on the child's age and immediate needs, whether that is diapers and blankets for toddlers or backpacks and self care items for teens.

Journey Totes is more than distribution. It is a structured response to instability. By partnering with foster care agencies, shelters, and community organizations, we ensure that children receive practical support during one of the most vulnerable transitions of their lives. For donors and sponsors, this program offers a tangible, trackable way to directly impact a child's experience at the point of placement.



5

Foster Care
Agency Partners

300

Distribution and
Reach since its
inception

100%

100%
Satisfaction
Agency and Caregiver
Feedback

POWER A WISH



When Andre aged out of foster care, he carried more than a duffel bag. He carried years of transition, uncertainty, and the quiet determination to build something different for himself.

He had moved homes more times than he could count. New schools. New caseworkers. New rules. But one thing stayed consistent. He wanted to help other young people who felt unseen.

That desire led him to pursue work in youth counseling.

After completing his certification program and securing his first real job offer as a counselor at a community based organization, reality hit. The position required professional attire. Dress shirts. Slacks. A blazer. Clothing that signaled credibility in rooms where he would be guiding vulnerable youth.

He did not have it.



Starting over after foster care often means choosing between rent and groceries, transportation and utilities. A full professional wardrobe simply was not possible. He almost declined the role out of embarrassment. He did not want to show up looking unprepared.

Through our Power a Wish initiative, Andre submitted a simple request. A suit for his first job.

Because EmpowHer partners with One Simple Wish, his request was shared with our community of donors. Within days, a supporter fulfilled his wish. We added a few essentials: dress shirts, a tie, and shoes.

When Andre tried on his suit for the first time, he grew quiet.

He said, "I finally look like the counselor I always saw myself becoming."

On his first day of work, he stood in front of a group of young men, many of whom were navigating the same foster care system he had just exited. He did not just represent a staff member. He represented possibility.

beyond the bookshelf & educational readiness



When Jordan first walked into Beyond the Bookshelf, she was eight years old and already convinced that reading "just wasn't her thing." She could decode words, but she did not enjoy it. Books felt like work. School felt frustrating. And like many children navigating housing instability and inconsistent academic support, she had already started to see herself as "behind." The truth is, Jordan was not behind. She was under-supported.

Beyond the Bookshelf was created for children just like her. Children with curiosity. Children with imagination. Children with potential. What they often lack is access to culturally relevant books, structured literacy spaces, and adults who take the time to make reading feel alive instead of intimidating.

We do not simply hand children books. We create an environment where stories feel personal. Where characters look like them. Where discussions connect reading to real life. Where comprehension is strengthened through conversation, creativity, and joy.

In 2025, 15 children participated in Beyond the Bookshelf. 100% received bookbags & school supplies, 87% showed measurable improvement in reading comprehension as measured by post-session assessments. Ninety-two percent reported reading more books than they had the previous year. Fifteen students completed their Reading Passports and were recognized at our Literacy Celebration. 100% of surveyed youth reported that the books felt written for them.

Beyond the Bookshelf is not just a literacy program. It is an educational equity strategy. It is youth development in action. It is life skills training disguised as story time. And it works.



200

200 children received bookbags and school supplies



87%

showed measurable improvement in reading comprehension



15

15 students completed the reading program in 2025



empowHim

This year, EmpowHIM had the honor of walking alongside a young man who almost did not attend his senior prom. He was bright, respectful, and full of potential. But like many young men navigating financial hardship, prom felt out of reach. Between rent, groceries, and basic needs, a tuxedo was not a priority in his household. He quietly accepted that he might just stay home.

That is where EmpowHIM stepped in.

Our mentoring relationship with him did not begin with a suit. It began with a conversation. Real talk about manhood, responsibility, choices, and vision. He showed up consistently to sessions. He asked questions about career pathways. He listened closely during discussions about credit, discipline, and long-term planning. He began to open up about the pressure he felt to grow up fast.

We saw more than a young man who needed formalwear. We saw leadership. We saw character. We saw someone worth investing in.

Through our EmpowHIM Prom Makeover, he received a professionally fitted suit, shoes, grooming services, and personal styling. But the most important part of that experience was the mentorship that came with it. Our mentors walked him through professional etiquette, posture, eye contact, and confidence. They talked about presence. About preparation. About carrying yourself in rooms that were not always built with you in mind.

When he looked in the mirror after his final fitting, he stood differently. Not because of the fabric. Because of the affirmation.

Following the event, he continued meeting with EmpowHIM mentors. He worked on resume development. He participated in financial literacy sessions focused on budgeting and saving. He discussed post graduation plans and explored workforce opportunities. The suit may have opened a door socially, but mentoring opened his mind strategically.

EmpowHIM exists to do exactly that.

In 2025, our mentoring and grooming initiatives provided young men with structured life skills training, career, and positive male role models. We are intentional about addressing the whole young man, mindset, discipline, presentation, emotional intelligence, and long-term vision.

The prom recipient recently shared that before this experience, he did not feel seen. Now, he feels supported. That is the impact.

EmpowHIM is not charity. It is cultivation. We are shaping young men who understand their value, who prepare for opportunity, and who are equipped to lead with confidence and integrity.

Sometimes, transformation starts with a conversation.

Sometimes it is sealed with a suit.

professional development workshops

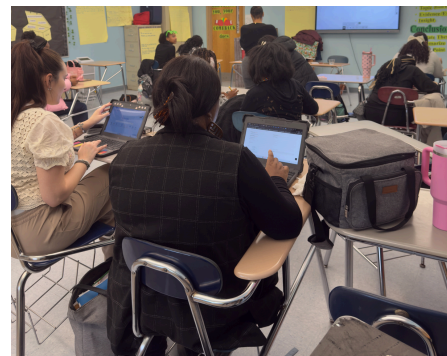
Tasha had been applying for jobs for months with no callbacks. She believed she was not qualified, not polished enough, not "what employers were looking for." The truth was simpler. No one had ever taught her how to translate her experience into language that hiring managers understand.

Through our Professional Development Workshops, she participated in a resume writing session and a confidence-building workshop. We helped her restructure her resume to highlight measurable accomplishments, clarify her skills, and position her volunteer and caregiving experience as leadership and project management. In the confidence session, she practiced interview responses, body language, and speaking about her strengths without shrinking. Within weeks, she secured two interviews and accepted a job offer.



In 2025, our workshops supported women and young adults with practical workforce readiness tools, resume development, interview preparation, and mindset coaching. Participants left not only with stronger resumes but with a stronger belief in their value.

Sometimes the barrier is not ability. It is access to guidance. We provide both.



10

workshops offered

100%

100%

100% Satisfaction
from participants



100+

Vision Boards and
Journals Completed



EmpowHer Collective

In 2025, the EmpowHer Collective strengthened its role as the community engagement arm of EmpowHer Enterprises Inc., deepening sisterhood while advancing measurable impact for women and girls.

What began as a Facebook community evolved into a structured empowerment space that connected women across generations, professions, and life stages. The Collective served as both a safe place for encouragement and a strategic activation hub that supported mentoring, volunteerism, and recurring giving tied to Journey500.

Community Growth

In 2025, the Collective focused on intentional growth rather than vanity numbers. Membership increased steadily through mission-aligned invitations, board engagement, and organic referrals. More importantly, engagement remained strong, with members participating in discussions centered on financial literacy, mental health, confidence building, leadership, and legacy.

The Collective was not built for noise. It was built for depth.

Monthly Programming Alignment

Each month aligned with nationally recognized awareness themes such as Women's History Month, Mental Health Awareness Month, National Adoption Month, and Giving Tuesday. This structure strengthened:

- Community education
- Corporate sponsorship outreach
- Grant alignment
- Strategic fundraising timing

By anchoring conversations in recognized observances, the Collective remained culturally relevant while staying rooted in the core mission of serving women and girls.

Impact Beyond the Screen

While the Collective began online, its influence extended into:

- In person empowerment gatherings
- Volunteer activation events
- Youth supply initiatives
- Sponsor engagement conversations

The digital space became the front door. Real world impact followed.

What 2025 Proved

The EmpowHer Collective is more than a social media group. It is:

- A leadership incubator
- A volunteer recruitment engine
- A donor cultivation space
- A sisterhood rooted in purpose

Most importantly, it is a bridge. It connects women who have built stability with girls who are still finding their footing.

2025 laid the foundation for long term sustainability. The work ahead is not about expansion for its own sake. It is about strengthening the structure so that every girl we serve encounters consistency, encouragement, and opportunity.

When women gather with intention, communities change.

Winter Wonderland gala

The EmpowHer & EmpowHim Christmas Gala is our signature sponsor-facing event, designed to bring community leaders, corporate partners, small businesses, and philanthropists into direct alignment with measurable impact.

This evening is not simply a celebration. It is a strategic fundraising experience that fuels our Annual Community Christmas Party and Toy Giveaway, one of our largest community-based outreach efforts of the year.

Because of sponsor investment and partnership, we distributed over 1,000 toys to children and families navigating economic hardship this past holiday season. For many households, this relieved financial pressure during an already challenging time. For children, it ensured they experienced joy and normalcy without their parents carrying the burden alone.

Our sponsors make that possible.

The Gala also serves as a platform to publicly recognize and honor community leaders and partners who demonstrate exceptional commitment to youth development, educational equity, and family support. Honorees are selected based on their tangible service and alignment with our mission. This recognition not only celebrates leadership, it strengthens collaborative networks that advance shared community goals.

For sponsors, the evening provides:

- Brand visibility among engaged community stakeholders
- Direct association with a high impact, family-centered nonprofit
- Public recognition during the awards segment
- Meaningful connection to beneficiaries and community partners
- Clear reporting on funds raised and outcomes achieved

The EmpowHer Christmas Gala allows sponsors to see their investment translated into action, toys distributed, families supported, and community trust strengthened.

When sponsors partner with EmpowHer, they are not underwriting an event. They are underwriting access, dignity, and opportunity for families who need it most. And the results are visible by Christmas morning.

Sources



Toy giveaway

The EmpowHer Christmas Gala and Community Toy Giveaway represents a high-impact, community-anchored investment opportunity for sponsors and grant partners committed to youth development and family stabilization.

In partnership with United Community Corporation in Newark, NJ, EmpowHer Enterprises delivered over 1,000 toys to more than 400 families navigating economic hardship during the holiday season. This collaboration strengthened outreach capacity, expanded access to underserved households, and ensured equitable distribution within communities disproportionately impacted by financial strain.

For many families, the holiday season presents a difficult choice between essential expenses and meaningful celebration. Through sponsor and grant support, we eliminated that choice. Parents were able to maintain financial stability while children experienced the joy and emotional security that comes from being remembered and prioritized.

This initiative does more than distribute toys. It reinforces community trust, supports family readiness, and addresses the social and emotional well being of children during a season that can otherwise heighten stress and disparity.

Sponsor and grant investments directly supported:

- Toy procurement and age-appropriate gift distribution
- Event logistics and volunteer mobilization
- Community-based partnership coordination with UCC
- Outreach to families in need through trusted local networks

The measurable outcomes are clear: 1,000+ toys distributed and 400 families served. The long-term impact is equally important. When children feel seen and supported, and when families feel backed by the community, stability increases, and isolation decreases.

We welcome continued partnerships with sponsors and grantmakers who understand that strategic seasonal intervention can have lasting effects on youth confidence, family morale, and community cohesion.



outreach initiatives



1000+ Toys

Toy Giveaway

In partnership with United Community Corporation in Newark, NJ, EmpowHer Enterprises hosted our Annual Toy Giveaway to ensure children in underserved families experienced the joy of the holiday season. Together, we distributed hundreds of toys to children whose parents were navigating financial hardship. For many families, this event eased the burden of choosing between essential bills and holiday gifts. For the children, it meant waking up on Christmas morning with something that felt chosen just for them. This collaboration reflects our shared commitment to community care, family support, and restoring joy where it is often overshadowed by stress. Through strong local partnerships, we are able to meet tangible needs while strengthening trust within the communities we serve.



100+ Coats

ONLINE AND PR COVERAGE ASSESSMENT

In partnership with Tammy Williams, West Orange Councilwoman, EmpowHer Enterprises hosted a Winter Coat Giveaway to support families facing rising living costs and seasonal hardships. Together, we distributed over 100 warm coats to children and adults who would have otherwise entered the winter months without proper protection. For many households, a quality winter coat is not a small purchase; it is a financial stretch. This initiative ensured that families did not have to choose between staying warm and meeting other essential needs. Through strong civic partnership and community collaboration, we turned a practical necessity into a moment of care, visibility, and collective responsibility.



200

BOOKBAGS

In partnership with Nassan's Place, EmpowHer Enterprises supported over 200 families impacted by autism through a targeted book bag and school supply giveaway. For many parents raising children with autism, back to school season carries added financial and emotional pressure, from specialized classroom needs to therapy costs. Together, we provided backpacks filled with essential supplies to ensure students started the school year prepared and confident.



100+

TOILETRY PACKAGES

This year, EmpowHer Enterprises distributed over 100 toiletry kits to women residing in local shelters. Each kit included essential personal care items many of us take for granted, soap, deodorant, toothpaste, feminine hygiene products, lotion, and other daily necessities.

collaboration & partnerships

EmpowHer Enterprises Inc believes that meaningful impact is never built in isolation. The challenges facing foster youth, underserved families, and women rebuilding their lives are complex and interconnected. Addressing them requires alignment, trust, and shared responsibility.

Our partnerships are intentional and mission driven. We collaborate with schools, shelters, foster care agencies, corporate sponsors, faith based institutions, and community leaders to extend resources, strengthen programming, and close service gaps. Each partnership is grounded in mutual respect, clear roles, and measurable outcomes.

We do not pursue partnerships for visibility alone. We seek collaborations that expand access, increase efficiency, and deepen the quality of support delivered to those we serve. Through coordinated outreach, shared expertise, and pooled resources, we ensure that generosity is translated into structured, sustainable impact.

When we partner well, communities are not duplicated in effort, they are strengthened in unity. And when unity leads, outcomes improve.



financial earnings

As we close out 2025, we are proud to share that this marks our second full year of intentional fundraising as a growing nonprofit organization.

In just two years of structured fundraising efforts, EmpowHer Enterprises Inc has continued to strengthen its financial foundation while expanding program impact across youth development, educational equity, mentoring, and family readiness initiatives. Every dollar raised has been directed toward mission driven programming that produces measurable outcomes in the communities we serve.

Our revenue this year was generated through a combination of individual donors, community partnerships, corporate sponsors, fundraising events, and small grants. As a grassroots organization, we remain deeply community supported. The majority of our funding comes from people who believe in this work and give faithfully.

We are committed to responsible stewardship. Funds are allocated across three primary areas: program services, management and administrative oversight, and fundraising sustainability. The largest percentage of expenditures directly supports program delivery, including Journey Totes, Beyond the Bookshelf, EmpowHIM mentoring, Power a Wish, professional development workshops, and community distributions.

As we enter our third year of fundraising, our focus is on increasing grant funding, strengthening recurring donor support, and building strategic partnerships that allow us to scale responsibly. We understand that financial growth must match program growth, and we are committed to transparency, accountability, and long term sustainability.

PERSONAL DONATIONS GIVEN

\$4k

COMMUNITY & CORPORATE GRANTS

\$17k

SPONSORSHIPS

\$2k



As we enter our third year of fundraising, our focus is on increasing grant funding, strengthening recurring donor support, and building strategic partnerships that allow us to scale responsibly. We understand that financial growth must match program growth, and we are committed to transparency, accountability, and long-term sustainability.

This is only year two.

And yet, because of our supporters, we are already seeing tangible results in the lives of children, women, and families who now have greater access to stability, confidence, and opportunity.

We are building wisely.

We are stewarding carefully.

And we are growing with purpose.

future plans 2026 goals

THE LOOK AHEAD...

The needs in our communities are not decreasing. They are evolving. EmpowHer Enterprises Inc is preparing to meet that evolution with structure, intention, and measurable growth.

In the coming year, our focus is not simply on expansion. It is strategic expansion.

1. Scaling Journey Totes with Structure

We will increase the number of Journey Totes distributed through deeper partnerships with foster care agencies and corporate sponsors. Our goal is to move from reactive distribution to proactive inventory readiness, ensuring that when a child enters care, dignity is immediately available.

We are actively pursuing corporate sponsorships, bulk supply partnerships, and volunteer packing events to sustain and scale this program efficiently.

2. Expanding Literacy Outcomes

Beyond the Bookshelf will expand its reach while strengthening its evaluation metrics. We plan to:

- Increase participant enrollment
- Deepen comprehension tracking
- Strengthen family engagement
- Build stronger school and library partnerships

Our goal is not only participation growth, but documented literacy improvement that funders can measure and trust.

3. Strengthening Youth Leadership Development

The Leadership Institute initiative will continue to develop, providing middle school students with structured exposure to leadership, healthy relationship education, and confidence-building programming.

We are working to secure sponsorships and long-term funding to ensure this initiative becomes a recurring and sustainable offering within the community.

4. Deepening Life Skills and Financial Literacy Programming

We will expand our life skills and financial literacy workshops to better support aging out foster youth and women in transition. This includes curriculum development, stronger tracking of behavioral shifts, and partnerships that connect participants to real-world economic opportunity.

Preparation without a pathway is incomplete. We are committed to both.

5. RISE & SOAR Summer Leadership Intensive - a structured, one-week youth development intensive serving 20 youth during peak high-risk hours between 3pm and 8pm. The program is designed to reduce exposure to unsafe environments during unsupervised after-school hours while equipping participants with leadership skills, financial literacy education, career development exposure, and entrepreneurship training. Through mentorship, hands-on learning, and a culminating capstone venture pitch project, youth will gain practical life skills that strengthen academic engagement, workforce readiness, and long-term economic mobility.

6. Looking ahead, EmpowHer Enterprises plans to expand the Caterpillar and Butterfly Development Programs, designed to support girls through key stages of personal growth. The Caterpillar phase focuses on building confidence, emotional wellness, and foundational life skills, while the Butterfly phase prepares participants for leadership, mentorship, and future success. Through workshops, mentoring, and community engagement, these programs will help more girls develop resilience, strengthen their voice, and step confidently into their purpose.

thank you to our sponsors, community partners & donors

Thank you for choosing to invest in more than a moment. You invested in movement.

Because of your generosity, children entering foster care received suitcases filled with dignity instead of trash bags. Young readers discovered books that reflected their voices and expanded their imagination. Women rebuilding their lives found confidence, coaching, and community. Families facing financial strain experienced relief during the holidays.

Your support did not sit on paper. It showed up in real rooms, in real homes, and in real lives.

We recognize that every contribution represents trust. Trust that resources will be stewarded responsibly. Trust that programs will be delivered with excellence. Trust that impact will be measurable and meaningful. We do not take that lightly.

Whether you provided financial support, in-kind donations, corporate sponsorship, or volunteer leadership, you strengthened the foundation of this work. You helped ensure that our programs are not temporary acts of kindness, but structured pathways toward stability and opportunity.

Thank you for standing with us. Thank you for believing that dignity matters. Thank you for helping us build futures that are stronger than circumstances.

We are grateful. And we are just getting started.

**With appreciation,
EmpowHer Enterprises Inc**

Our community partners & sponsors

- **CASA of Essex County**
- **CASA of Morris & Sussex County**
- **Children's Aid & Family Services (CAFS)**
- **Roots & Wings**
- **United Community Corporation (UCC)**
- **UW Madison**
- **Toys for Tots**
- **Jersey Cares**
- **One Simple Wish**
- **Vishen**
- **Jamille Edwards, Keeping it Handsome Barbershop**
- **MJ Productions**
- **DJ Rill**
- **Grace, Hope & Healing**
- **Grace Wilday Junior HS**
- **AmazonSmile**
- **Dana Cadena**
- **Toy Jefferson**
- **Google**
- **Walmart**
- **Costco**
- **Footlocker**
- **Philadelphia Eagles**
- **Uber Eats**
- **Wakfern**
- **SOJO Spas**
- **Bessie Green Community**
- **The Fulmore Foundation**
- **Nassan's Place**
- **Dress for Success**
- **William Marshall**
- **Majesty Photography**
- **Councilwoman Tammy Williams (West Orange)**
- **West Orange Arts Center**





thank you to our volunteers

There is no substitute for people who show up.

To every volunteer who packed a suitcase, sorted supplies, wrapped toys, read with a child, mentored a young person, facilitated a workshop, or stayed late to clean up after an event, thank you.

You did not just give time. You gave presence.

**You gave patience when children needed reassurance.
You gave encouragement when someone doubted themselves.**

**You gave energy when the work required extra hands.
Because of you, our programs are not simply organized.
They are human.**

Volunteering with EmpowHer is not about checking a box. It is about stepping into someone's story at a moment that matters. Every tote packed carefully, every workshop supported, every event staffed with excellence sends a quiet but powerful message: you are not alone.

Your commitment allows us to extend our reach without compromising care. You strengthen our mission, expand our capacity, and model leadership through service.

We see you. We appreciate you. And we are deeply grateful that you choose to stand with EmpowHer.

**With gratitude,
EmpowHer Enterprises Inc**

contact us

EMPOWHER ENTERPRISES INC

C: +1 973-862-8847

E: CONTACT@EMPOWHERINC.ORG



[@EMPOWHERINC](https://www.instagram.com/EMPOWHERINC)

WWW.EMPOWHERINC.ORG



Empowtten