

P Parallel Parking Made Simple – A Guide by Drive Safe Driving School

Step 1: Get Ready to Park

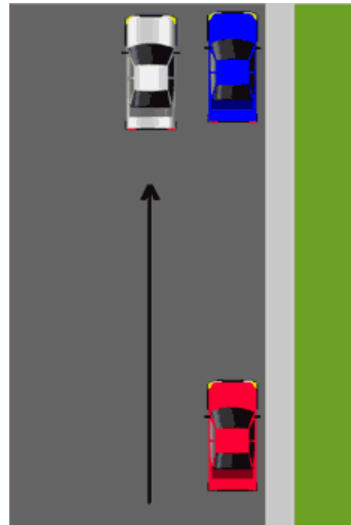
Turn on your right signal.

Check your mirrors and shoulder to make sure it's safe.

Pull up beside the car in front of the space.

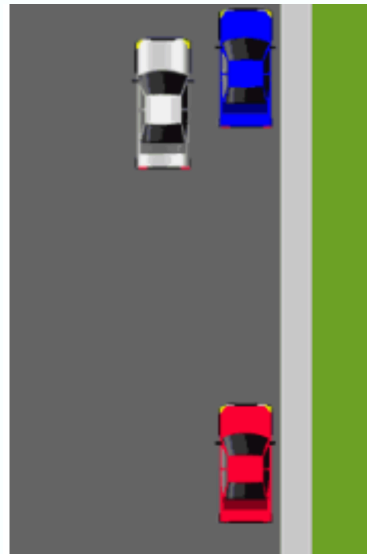
Line up your side mirror with their side mirror.

Keep about 1 metre (3 feet) between your car and theirs.



Step 2: Reverse Until Midpoint

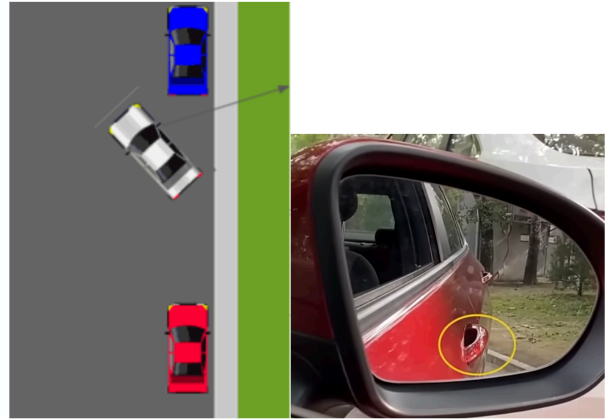
1. **Look all around** for people and traffic.
2. **Shift to reverse gear.**
3. **Back up slowly.**
4. Stop when your **side mirror lines up with the back handle** of the parked car.





Step 3: Turn Right and Reverse

1. Turn the steering wheel one full turn to the right.
2. Reverse slowly.
3. Stop when you see the center of the curb in the middle of the front passenger door handle, as shown in the picture.



Final Step: Straighten and Park

1. Turn the steering wheel all the way to the left.
2. Reverse slowly.
3. Stop when your car is straight and parallel to the curb, or when you're lined up behind the vehicle in front.
4. Straighten the steering wheel.
5. Shift to park and apply the handbrake.



You're safely parked!

