



**SHARED SUBLEASE OPPORTUNITY**  
**PHILLIPS PARK - BUILDING "A" 6120 - 2 STREET SE**  
**SUITE A23 - UP TO 1,379 SF**  
**TERM TO APRIL 29, 2026**

**Scout**



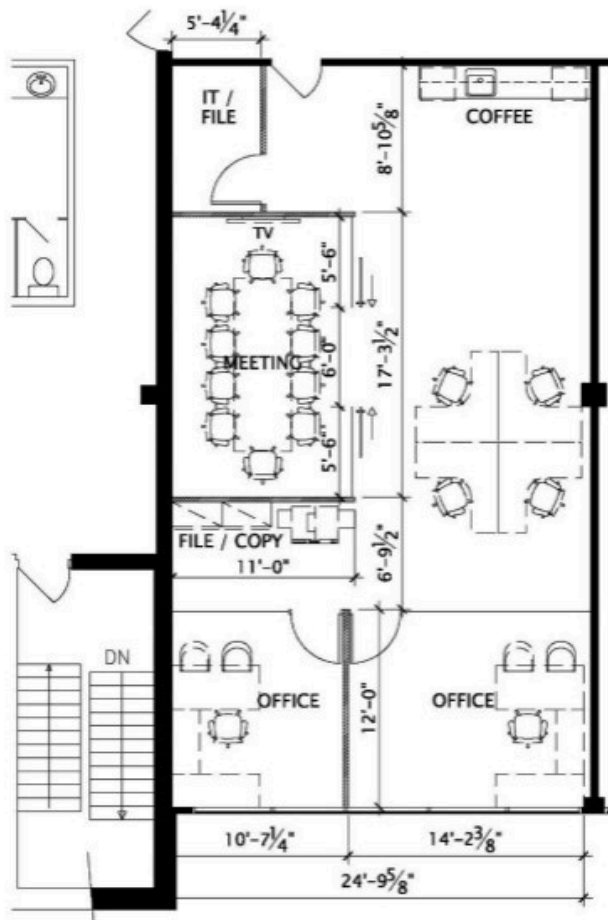
- Various shared space options available
- Sharing space with a psychology group using the premises part-time
- High quality leaseholds, furnished with free scramble surface parking

Lori Suba  
President & Broker  
(403)850-4248  
lsuba@scoutrealestate.ca

**SCOUTREALESTATE.CA**

## Property Features

- Phillips Park is centrally located with easy access to Macleod Trail, Blackfoot Trail & Glenmore Trail.
- Secure FOB access after hours
- Free scramble surface parking
- Elevator access the building
- Black Apron Restaurant located on main floor



## Shared Sublease Opportunity

- Suite A23
- 1,379 SF
- Available Immediately
- Sublease Term to April 30, 2026
- Various furnished shared scenarios
- Market sublease rates
- 2025 Op Costs & Taxes - \$11.29 PSF

### Shared Scenario #1 -

Alternating Days Occupying the Full Premises (2 - 3 days/week)

### Shared Scenario #2 -

Select Desks/Offices Shared on Full Time Basis

### Layout:

2 Offices

- 1 office contains two desks
- 1 office contains one desk & sitting area
- Boardroom seats 8 with television and whiteboard
- Open space with 6 available desks
- Sitting area - couch + 2 chairs
- Kitchen

The information is intended for informational purpose only and should not be relied upon by recipients hereof. Scout Real Estate Ltd. neither guarantees, warrants or assumes any responsibility or liability with respect to the accuracy, correctness, completeness, or suitability of, or decisions based upon or in connection with, the information. The Information may change and any property described herein may be withdrawn from the market at any time without notice or obligation of any kind on the part of Scout Real Estate Ltd.

Lori Suba  
President & Broker  
(403)850-4248  
lsuba@scoutrealestate.ca