



CLOSET

SYSTEMS AND
ACCESSORIES





With our expertise and a complete product offering, the closet becomes a space tailored to individual needs and style. Explore our curated inspiration designed to help shape a personalized and thoughtful storage solution.



The Design-R collection blends style and functionality to enhance every space. With sleek hooks, modern pull-out racks, and smart storage accessories, it offers tailored solutions for a variety of needs. Richelieu Design-R brings a refined, practical touch to any interior.

DESIGN-R

Transform your storage in style with pull-out racks and shoe rails that provide easy access to accessories, clothing, and footwear.



A Valet Rod



B Pull-Out Belt Rack

Valet Rods

Add a refined touch to any closet with these valet rods. Practical and functional, they keep garments neat and accessible during dressing.

A

- ◆ Reversible installation for right- or left-side access
- ◆ Easy to install
- ◆ Available in four finishes and two depths



C Pull-Out Tie Rack



D Pull-Out Scarf Rack

Pull-Out Belt, Tie, and Scarf Racks

These full-extension pull-out racks optimize the storage of belts, ties, and scarves by making them easily accessible. With a blend of practicality and smart design, they ensure a well-organized closet.

B to D

- ◆ Reversible installation for right- or left-side access
- ◆ Full-extension, ball-bearing slides
- ◆ Easy installation
- ◆ Available in four finishes and two depths

Richelieu Design-R Valet Rods

Ref.	Description	Product Depth	Min. Int. Depth Required	Chrome	Satin Brass	Matte Nickel	Matte Black
A	Valet Rod	11 3/4" (300 mm)	12" (305 mm)	3532140	3532160	3532184	3532900
		13 3/4" (349 mm)	14" (356 mm)	3531140	3531160	3531184	3531900

Mounting hardware included.

Richelieu Design-R Pull-Out Racks

Ref.	Description	Product Depth	Min. Int. Depth Required	Chrome	Satin Brass	Matte Nickel	Matte Black
B	Belt Rack, 5 Hooks	11 3/4" (300 mm)	12" (305 mm)	3542140	3542160	3542184	3542900
C	Tie Rack, 15 Hooks			3562140	3562160	3562184	3562900
B	Belt Rack, 6 Hooks	13 3/4" (349 mm)	14" (356 mm)	3544140	3544160	3544184	3544900
C	Tie Rack, 17 Hooks			3564140	3564160	3564184	3564900
D	Scarf Rack, 6 Hooks			3577140	3577160	3577184	3577900

Mounting hardware included.

Shoe Rails

An elegant aluminum rail keeps shoes securely in place and is designed for 18" (457 mm), 24" (610 mm), or 30" (762 mm) shelves. Its reversible design offers two surface options, smooth or ribbed, for added versatility.

- ◆ Reversible rails available in two surface options
 - ◆ Smooth for a clean look
 - ◆ Ribbed for a bold, modern style
- ◆ Can be cut to desired length for a custom fit
- ◆ Easy installation
- ◆ Available in four finishes and three widths



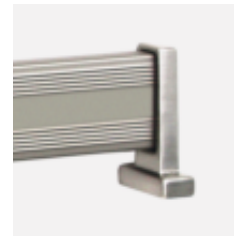
A Shoe Rails



Chrome



Satin Brass



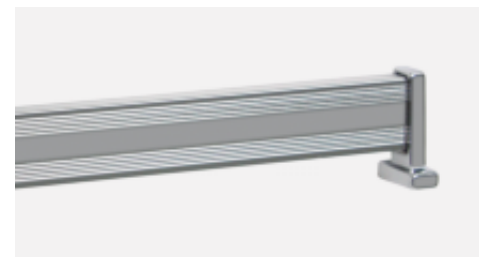
Matte Nickel



Matte Black



Smooth surface



Ribbed surface

Richelieu Design-R Shoe Rails

Ref.	Product Width	Min. Int. Width Required	Height	Chrome	Satin Brass	Matte Nickel	Matte Black
A	17" (432 mm)	18" (457 mm)	1 1/2" (38 mm)	43218140	43218160	43218184	43218900
A	23" (584 mm)	24" (610 mm)	1 1/2" (38 mm)	58418140	58418160	58418184	58418900
A	29" (737 mm)	30" (762 mm)	1 1/2" (38 mm)	73718140	73718160	73718184	73718900

Mounting hardware included.

Center rail posts are included only with the 23" (584 mm) and 29" (737 mm) models.

DESIGN-R

Richelieu Design-R Collection features elegant and practical hooks and baskets, perfect for storing items of all sizes, from the smallest accessories to larger essentials.



A Five-Hook Horizontal Wall Bracket



B Six-Hook Vertical Wall Bracket



C Two-Sided Eight-Hook Wall Bracket



D Circular Wall Bracket



E Double-Hook Wall Bracket



F Double-Hook Wall Bracket

Hooks

These wall-mounted supports, featuring a sleek and modern design, bring elegant organization to any space. Both practical and stylish, they provide optimal storage for jewelry, hats, handbags, coats, and more. Their refined look and accessible layout keep everyday essentials within easy reach.

- ◆ Ideal for closets or any other room in the home
- ◆ Sturdy design supports multiple accessories
- ◆ Simple anchor base allows for a discreet setup
- ◆ Available in four finishes
- ◆ The circular wall bracket is perfect for hanging scarves, hats, and handbags

Richelieu Design-R Modern Hooks

Ref.	Hook Model	Chrome	Brushed Nickel	Satin Brass	Matte Black
A	Multiple	RH88845140T	RH88845195T	RH88845160T	RH88845900T
B	Multiple	RH88846140T	RH88846195T	RH88846160T	RH88846900T
C	Multiple	RH88847140T	RH88847195T	RH88847160T	RH88847900T
D	Simple	RH88848140T	RH88848195T	RH88848160T	RH88848900T

Mounting plate and screws included.

Richelieu Design-R Transitional Hooks

Ref.	Hook Model	Polished Nickel	Brushed Nickel	Satin Brass	Matte Black
E	Double	RH775132180T	RH775132195T	RH775132160T	RH775132900T
F	Double	RH775232180T	RH775232195T	RH775232160T	RH775232900T

Mounting plate and screws included.

Pull-Out Baskets

These pull-out wire baskets offer practical storage that enhances organization in laundry rooms or closets, supported by a full-extension sliding mechanism.

- ◆ Durable construction with full-extension slides
- ◆ Easy installation with just four screws
- ◆ Baskets available in three finishes, three widths, and three heights
- ◆ Weight capacity of 70 lbs (32 kg)
- ◆ Two liner options to help prevent marks on clothing:
 - ◆ Cotton fabric, machine washable
 - ◆ Plastic, discreet and easy to clean



A Pull-Out Basket



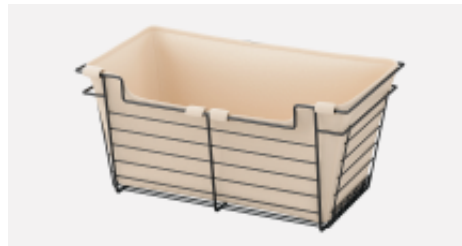
Chrome



Matte Nickel



Matte Black



B Canvas Liner



C Plastic Liner

Richelieu Design-R Pull-Out Wire Baskets

Ref.	Int. Width Required	Product height of 6" (153 mm)			Product height of 11" (280 mm)			Product height of 17" (432 mm)		
		Chrome	Matte Nickel	Matte Black	Chrome	Matte Nickel	Matte Black	Chrome	Matte Nickel	Matte Black
A	18" (457 mm)	8561814140	8561814184	8561814900	8511814140	8511814184	8511814900	8571814140	8571814184	8571814900
A	24" (610 mm)	8562414140	8562414184	8562414900	8512414140	8512414184	8512414900	8572414140	8572414184	8572414900
A	30" (762 mm)	8563014140	8563014184	8563014900	8513014140	8513014184	8513014900	8573014140	8573014184	8573014900

Includes two matching slides with hardware bag.

These products require a minimum interior depth of 14" (356 mm).

Richelieu Design-R Canvas Liners

Ref.	Basket Width	Basket Depth	Basket height of 6" (153 mm)	Basket height of 11" (280 mm)	Basket height of 17" (432 mm)	Finish
B	18" (457 mm)	14" (356 mm)	061814034	111814034	171814034	Beige
B	24" (610 mm)	14" (356 mm)	062414034	112414034	172414034	Beige
B	30" (762 mm)	14" (356 mm)	063014034	113014034	173014034	Beige

Richelieu Design-R Plastic Liners

Ref.	Basket Width	Basket Depth	Basket height of 6" (153 mm)	Basket height of 11" (280 mm) or 17" (432 mm)	Finish
C	18" (457 mm)	14" (356 mm)	0618011	1118011	Translucent
C	24" (610 mm)	14" (356 mm)	0624011	1124011	Translucent
C	30" (762 mm)	14" (356 mm)	0630011	1130011	Translucent

Conero redefines interior elegance through refined details, graceful lines, and tempered glass





With Conero, thoughtful design meets everyday function. From sleek pull-out shelves and drawers to innovative pull-down closet rods and adaptable accessories, every element is crafted for versatility. Whether showcased or concealed behind sliding doors, Conero delivers tailored storage with style—no compromise required.

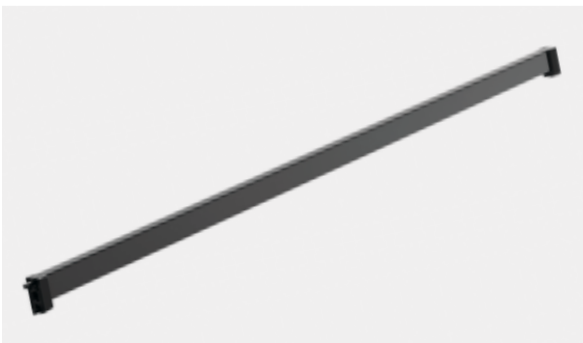


A Closet Rod

Closet Rods

The closet rod is an essential accessory for a perfectly organized closet.

- ◆ Protective strip helps prevent scratches on the rod
- ◆ Can be cut to the desired length
- ◆ Made of aluminum



A Closet Rod



B Supports

Closet Rods

Ref.	No.	Description	Min. Int. Width Required	Finish
A	23891436900	Rectangular Rod and Two Supports Included, 5/8" x 1 1/8" (15 x 30 mm)	36 1/4" (920 mm)	Powder Black
A	23891448900	Rectangular Rod and Two Supports Included, 5/8" x 1 1/8" (15 x 30 mm)	48" (1,220 mm)	Powder Black
B	23891400900	Additional Supports for Rectangular Rod		Powder Black

Pull-Down Closet Rods

Pull-down closet rods make accessing clothing effortless while freeing up lower cabinet space for optimized storage.

- ◆ Effortless access and optimized use of full cabinet height
- ◆ Width-adjustable rods for a precise fit
- ◆ Smooth, secure lowering with self-balancing assist and soft-close mechanism
- ◆ Available in two models, including one with an integrated upper shelf bracket for added storage (shelf not included)
- ◆ Load capacity of 26.5 lbs (12 kg)
- ◆ 1 1/8" (30 mm) side spacer designed to provide optimal clearance for door hinges or to simplify installation in wider cabinets



A Pull-Down Closet Rod with Integrated Shelf



B Pull-Down Closet Rod



C Spacer for Pull-Down Closet Rod

Pull-Down Closet Rods

Ref.	Description	Width of 17 7/8" to 25 1/2" (455 to 648 mm)	Width of 25" to 32 1/2" (635 to 828 mm)	Finish	Load Capacity
A	Pull-Down Closet Rod with Integrated Shelf	23881417900	23881424900	Powder Black	26.5 lbs (12 kg)

Wooden shelf not included.

Ref.	Description	Width of 17 1/2" to 24 3/4" (445 to 628 mm)	Width of 24 5/8" to 31 3/4" (625 to 808 mm)	Finish	Load Capacity
B	Pull-Down Closet Rod	23871417900	23871424900	Powder Black	26.5 lbs (12 kg)

Ref.	Description	No.	Thickness	Finish
C	Spacer for Pull-Down Closet Rod	23871410900	1 1/8" (30 mm)	Powder Black



A Pull-Out Drawer

Pull-Out Shelves and Drawers

Paired with rounded-edge design and ultra-slim metal sides, these solutions maximize storage space while ensuring easy access to every item.

- ◆ Tempered glass adds both transparency and elegance
- ◆ The shelf features rear glass, while the drawer includes front and rear glass panels
- ◆ Optimized space with ultra-slim metal sides
- ◆ Additional width adjustment up to 2 3/8" (60 mm)
- ◆ Full-extension slides with soft-close mechanism for complete access
- ◆ Drawer bottoms in 5/8" (16 mm) or 3/4" (19 mm) melamine must be supplied by the customer
- ◆ 1 1/8" (30 mm) side spacer designed to provide optimal clearance for door hinges or to simplify installation in wider cabinets



B Pull-Out Shelf



C Spacer for Pull-Out Systems



Two heights available for the drawer



One height available for the shelf

Includes:

- 2 x Ultra-slim drawer sides
- 1 x Rear tempered glass insert
- 1 x Front tempered glass insert (included only with the drawer model)
- 1 x Rear fixing set
- 1 x Front fixing set
- 2 x Slides with protective cover
- 1 x Installation manual

Ref.	Description	Min. Int. Width Required of 18" to 20 3/8" (457 mm to 517 mm) *	Min. Int. Width Required of 24" to 26 3/8" (610 mm to 670 mm) *	Min. Int. Width Required of 30" to 32 3/8" (762 mm to 822 mm) *	Min. Int. Depth Required	Product Height	Finish
A	Pull-Out Drawers **	23891814900	23892414900	23893014900	13 5/8" (345 mm)	2 7/8" (72 mm)	Powder Black
		24891819900	24892419900	24893019900	18 3/4" (475 mm)	2 7/8" (72 mm)	Powder Black
		23901814900	23902414900	23903014900	13 5/8" (345 mm)	6 5/8" (168 mm)	Powder Black
		24901819900	24902419900	24903019900	18 3/4" (475 mm)	6 5/8" (168 mm)	Powder Black
B	Pull-Out Shelves **	23881814900	23882414900	23883014900	13 5/8" (345 mm)	2 7/8" (72 mm)	Powder Black
		24881819900	24882419900	24883019900	18 3/4" (475 mm)	2 7/8" (72 mm)	Powder Black

* Allows up to 2 3/8" (60 mm) of additional width adjustment.

** Drawer bottom not included.

Ref.	Description	Min. Int. Depth Required of 13 5/8" (345 mm)	Min. Int. Depth Required of 18 3/4" (475 mm)	Thickness	Finish
C	Spacer for Pull-Out Drawer or Shelf	23861410900	23861900900	1" (25 mm)	Powder Black

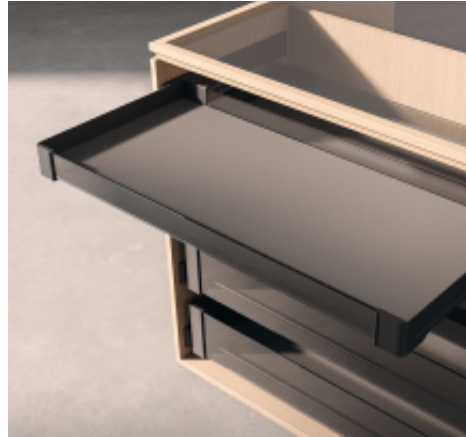
Use one or two spacers on each side, depending on the required interior cabinet width.

Conero brings refined organization to the closet with accessories that blend elegance and functionality—designed to simplify everyday storage needs with style.

Pull-Out Shelves and Drawers Accessories

Perfect for organizing rings, jewelry, ties, and belts, these lightweight trays feature a velvet-like flocked finish that protects delicate items while keeping them neatly arranged. Paired with a soft-touch mat, they also offer a non-slip surface for added stability.

- ◆ Soft flocked finish for a velvet-like surface
- ◆ Functional organization for accessories
- ◆ Secure, stable storage with non-slip and noise-reducing properties
- ◆ Mat can be easily trimmed to fit
- ◆ Mat with folded front edge of 25/32" (20 mm) to conceal the front of the shelf



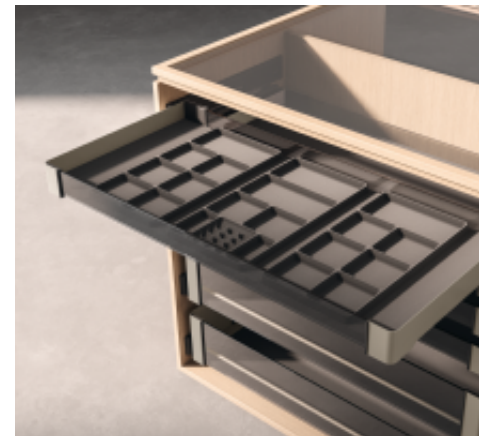
A Non-Slip Mat



A Non-Slip Mat



A Non-Slip Mat



A to C Non-Slip Mat & Trays



B Jewelry and Ring Tray



C Belt and Tie Tray

Ref.	Description	Width	Min. Int. Depth Required of 13 5/8" (345 mm)	Min. Int. Depth Required of 18 3/4" (475 mm)	Height	Finish
A	Non-Slip Mat for Pull-Out Drawer or Shelf	28 1/8" (715 mm)	23851400900	23851910900	1/16" (2 mm)	Anthracite
B	Ring and Jewelry Tray *	8 3/4" (223 mm)	23851410900	23851920900	1/2" (14 mm)	Anthracite
C	Belt and Tie Tray *	8 3/4" (223 mm)	23851420900	23851930900	1/2" (14 mm)	Anthracite

* Trays must always be used with non-slip mats #23851400900 or #23851910900, depending on the selected size.



Version with Pant Hangers and Laundry Baskets

Pull-Out Racks for Pant Hangers and Laundry Baskets

Designed for maximum versatility, these pull-out frames can accommodate hangers, laundry baskets, or both to offer a personalized storage solution.

- ◆ Rounded-edge design with ultra-slim metal sides
- ◆ Additional width adjustment up to 2 3/8" (60 mm)
- ◆ Full-extension slides with soft-close mechanism for complete access
- ◆ Multiple combinations of laundry baskets and hangers can be configured on a single frame
- ◆ 1 1/8" (30 mm) side spacer designed to provide optimal clearance for door hinges or to simplify installation in wider cabinets



A Pull-Out Frame



B Non-Slip Hanger



C Skirt Clip



D Laundry Basket



Explore other available configurations.

Pull-Out Frame Accessories

Pant and Skirt Hangers

These non-slip hangers, made from recycled plastic, keep pants crease-free and offer double hanging space. For a perfect hold on skirts, add two skirt clips to the bottom of the hanger to ensure a perfect hold for your skirts.

Laundry Baskets

Designed to blend into the closet, these laundry baskets simplify sorting with a discreet look, front access, and built-in lid. Available in two widths.

Ref.	Description	Min. Int. Width Required of 18" to 20 3/8" (457 mm to 517 mm) *	Min. Int. Width Required of 24" to 26 3/8" (610 mm to 670 mm) *	Min. Int. Width Required of 30" to 32 3/8" (762 mm to 822 mm) *	Min. Int. Depth Required	Product Height	Finish
A	Pull-Out Frames	23911814900	23912414900	23913014900	13 5/8" (345 mm)	2 7/8" (72 mm)	Powder Black
		24911819900	24912419900	24913019900	18 3/4" (475 mm)	2 7/8" (72 mm)	Powder Black

* Allows up to 2 3/8" (60 mm) of additional width adjustment.

Ref.	Description	Product Width	Min. Int. Depth Required of 13 5/8" (345 mm)	Min. Int. Depth Required of 18 3/4" (475 mm)	Product Height	Finish
B	Set of Five Hangers for 18" (457 mm) Pull-Out Frame **	1 1/8" (30 mm)	23875300900	23871905900	3 5/8" (93 mm)	Powder Black
B	Set of Seven Hangers for 24" (610 mm) Pull-Out Frame	1 1/8" (30 mm)	23877300900	23871907900	3 5/8" (93 mm)	Powder Black
C	Set of 10 skirt clips, 23871870900					Powder Black
D	Laundry Basket with a Depth of 11" (280 mm)	7 1/2" (190 mm)	23871200034	23871200034	20 7/8" (530 mm)	Taupe
		11 3/4" (300 mm)	23877500034	23877500034	20 7/8" (530 mm)	Taupe

** For a 30" width, two sets of five hangers are required.

Use one or two spacers on each side, depending on the required interior cabinet width (see page 12).

Belt and Tie Racks

Belt and tie racks are must-have additions to any well-organized closet. Available in both pull-out and fixed models, their reversible design blends refined style with practical everyday function.

- ◆ Soft-touch texture for wrinkle-free storage of belts and ties
- ◆ Adjustable holders with non-slip material
- ◆ Easy mounting on either left or right side
- ◆ Available in fixed or pull-out versions
- ◆ Grease-free slides for smooth extension while keeping clothes and accessories clean
- ◆ 1 1/8" (30 mm) side spacer designed to provide optimal clearance for door hinges



A Belt and Tie Rack



Pull-Out Rack



Fixed Rack

Shoe Rails

Ideal for shallow cabinets, shoe rails offer a simple and efficient way to keep footwear neatly organized.

- ◆ Compatible with all types of footwear
- ◆ Can be cut to the desired length
- ◆ Made of aluminum



B Shoe Rails



Ref.	No.	Description	Product Dimension (W x D x H)	Min. Int. Depth Required	Finish
A*	23831436900	Pull-Out Belt and Tie Rack with 10 Hooks	2 5/8" x 12 5/8" x 2 7/8" (67 x 320 x 72 mm)	13 5/8" (345 mm)	Powder Black
A*	23831448900	Fixed Belt and Tie Rack with 10 Hooks	2 5/8" x 12 5/8" x 2 7/8" (67 x 320 x 72 mm)	13 5/8" (345 mm)	Powder Black
A*	23831936900	Pull-Out Belt and Tie Rack with 15 Hooks	2 5/8" x 17 3/4" x 2 7/8" (67 x 450 x 72 mm)	18 3/4" (475 mm)	Powder Black
A*	23831948900	Fixed Belt and Tie Rack with 15 Hooks	2 5/8" x 17 3/4" x 2 7/8" (67 x 450 x 72 mm)	18 3/4" (475 mm)	Powder Black
B	23872300900	Shoe Rail	22 7/8" x 1" x 1 1/2" (582 x 25 x 38 mm)		Powder Black
B	23874400900	Shoe Rail (center rail post included)	43 7/8" x 1" x 1 1/2" (1,114 x 25 x 38 mm)		Powder Black

* You can use one or two spacers to provide optimal clearance for door hinges (see page 12).

This open storage system offers exceptional versatility, making it ideal for multiple rooms in the house and for bringing every creative idea to life





Logo III is a modular and flexible collection of aluminum profiles, designed for floor-to-ceiling or wall-mounted installation. This versatile system features a variety of supports to integrate closet rods, wooden or glass shelves, and drawer units to offer a fully customizable layout solution that is easy to install.

Versatile and easy to install, this system adapts seamlessly to various areas of the home, including closets, living rooms, and entryways.



A Wall-Mounted Profile



A Wall-Mounted Profile

Wall-Mounted or Ceiling-Mounted Profile

The Logo III closet system offers a flexible, modular storage solution. Made of aluminum profiles suitable for wall or ceiling installation, it can be cut to the desired dimensions. Easy to install, the system combines functionality and style, and is available in two finishes: aluminum gray and matte black.

Important Information:

- ◆ Maximum weight capacity of 55 lbs (25 kg) per pair of shelf supports
- ◆ Maximum weight capacity of 220 lbs (100 kg) between two profiles
- ◆ A minimum of two profiles is required to create a base section



Brighten up your wardrobe in style with a sleek, flexible LED strip and built-in lens.



B Ceiling-Mounted Profile



A Wall-Mounted Profile

The wall-mounted profile set includes:

- 1 x Aluminum profile measuring 105" (2.67 m) in height
- 1 x 90° corner joint for the cross profile
- 1 x Wall-mounting bracket
- 1 x Leveler with an adjustment range of 0 to + 5/16" (8 mm)



B Ceiling-Mounted Profile

The ceiling-mounted profile set includes:

- 1 x Aluminum profile measuring 121" (3.075 m) in height
- 1 x Ceiling-mounting bracket
- 1 x Leveler with an adjustment range of 0 to + 5/16" (8 mm)

Wall or Ceiling-Mounted Profiles

Ref.	Description	Profile Height with Maximum Adjustment	Distance Between Wall and Profile	Min. and Max. Shelf Depth	Max. Width Between Two Profiles	Aluminum Gray	Matte Black	Packaging
A	Wall-Mounted Profile	105 7/16" (2,678 mm)	min. 9 13/16" (250 mm)	7 7/8" to 19 11/16" (200 to 500 mm)	47 1/4" (1,200 mm)	88725326010	88725326900	Unit
B	Ceiling-Mounted Profile	121 3/8" (3,083 mm)				88725030010	88725030900	Unit

Supports

The space can be personalized with a variety of available supports for:

- ◆ Closet rods
- ◆ Wood and/or glass shelves
- ◆ Cabinets or cabinets with drawers
- ◆ Tilting shoe shelves
- ◆ Shelves and cabinets not included



A Support for Wood Shelf or Under-Cabinet



B Support for Glass Shelf



C Support for the Top of a Cabinet



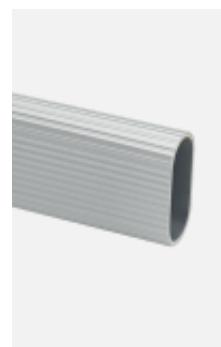
D Tilting Support for Shoe Shelf

Closet Rods

The design can be completed with a choice of two elegant closet rod styles: ribbed oval or smooth oval.



E Support for Oval Closet Rod



F Ribbed Oval Closet Rod



G Smooth Oval Closet Rod

Supports

Ref.	Description	Dimensions	Aluminum Gray	Matte Black	Packaging
A	Supports for Wood Shelf or Under-Cabinet	1 1/8" x 6" x 1 3/16" (28 x 152 x 30 mm)	8725450010	87254500900	Pair
B	Supports for Glass Shelf with Two Rubber Pads	1 1/8" x 6" x 1 3/16" (28 x 152 x 30 mm)	864219210	8642192900	Pair
C	Supports for the Top of a Cabinet	1 1/16" x 1 11/16" x 1 3/16" (18 x 43 x 30 mm)	8715840180	8725840900	Pair
D	Tilting Supports for Shoe Shelf *	1 1/8" x 6" x 1 3/16" (28 x 152 x 30 mm)	8715450010	87154500900	Pair
E	Supports for Oval Closet Rods	1 13/16" x 1 3/4" x 7/8" (46 x 44 x 22 mm)	8715915180	8715915900	Pair

* Three angles available: 0°, 22.5° and 45°.
Shelves and cabinets not included.

Closet Rods

Ref.	Description	Dimensions	Aluminum Gray	Matte Black	Packaging
F	Ribbed Oval Closet Rod	5/8" x 1 1/8" x 12' (15 x 30 mm x 3.66 m)	D030201210		Unit
G	Smooth Oval Closet Rod	5/8" x 1 1/8" x 8' (15 x 30 mm x 2.44 m)	1108315174	1108315900	Unit

Inspired by luxury boutiques, Vertiko offers refined open storage that adapts effortlessly to changing needs





The Vertiko closet system brings refined storage to life with a clean, modern aesthetic and fully customizable configurations. Its concealed aluminum profiles offer a minimalist look that adapts effortlessly as your needs change.

Equally suited to residential and commercial spaces, it integrates perfectly into closets, living areas, and pantries as well as boutiques, showrooms, and hotels.



Vertiko Closet System

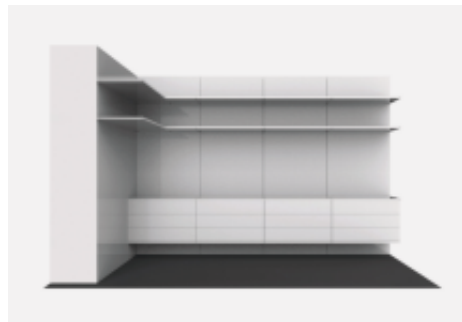
Drawing inspiration from high-end boutiques, the Vertiko closet system delivers a clean, sleek layout with wall-mounted flexibility, fully customizable and designed to evolve with your storage needs.

- ◆ Aluminum profile system discreetly concealed behind decorative panels
- ◆ Shelf and cabinet supports slide into narrow profile channels, allowing for quick and easy repositioning as needs change
- ◆ Panels, shelves, and cabinets not included
- ◆ Available in two finishes: aluminum gray and dark brown
- ◆ Three possible configurations: linear, 90° corner, or U-shaped layout

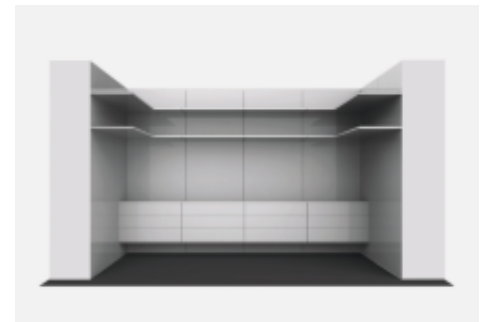
Three configuration types are available:



Linear



90° Corner



U-Shaped



A Mounting Profile



B Wall Mounting Plate



C Panel Mounting Plate

Mounting Hardware

The mounting profile and wall-mounting plate secure the system to the wall, while the panel-mounting plate connects each panel to the aluminum profile.

- ◆ Height adjustment of 3/4" (20 mm) using a mounting profile (A)
- ◆ Front-to-back adjustment of 5/16" (8 mm) using the wall-mounting plate (B)

Ref.	No.	Description	Product Length
A	678273010	Mounting Profile	96" (2,438 mm)
B	678000010	Wall Mounting Plate	
C	678001090	Panel Mounting Plate	



View the Vertiko installation instructions on our website

Brackets for Wooden Shelves or Cabinets

With a versatile selection of brackets for wooden shelves, drawer units, and angled shoe shelves, this system allows for fully tailored storage layouts. Whether opting for single, double, or multi-tier arrangements, every configuration is designed to suit your unique space and storage needs.

Important Information:

- ◆ Maximum profile height: 8' (2.4 m)
- ◆ Maximum panel, shelf, or cabinet width: 39 3/8" (1 m)
- ◆ Distance between two panels: 5/32" (4 mm)
- ◆ Maximum shelf depth: 17 3/4" (450 mm)
- ◆ Panel thickness: 3/4" (19 mm)
- ◆ Single shelf supports up to 45 lbs (20 kg) with one pair of brackets
- ◆ Single cabinet supports up to 90 lbs (40 kg) with two pairs of brackets
- ◆ Total load capacity between two profiles is 176 lbs (80 kg)

Brackets for Wooden Shelf or Cabinet

Side Brackets (A)	Central Brackets (B)	Application Length	Shelf Thickness	Finish
678127760	67830160	13 3/4" (350 mm)	3/4" (19 mm)	Dark Brown
678126460	67829960	17 3/4" (450 mm)	3/4" (19 mm)	Dark Brown
6781277100	678301100	13 3/4" (350 mm)	3/4" (19 mm)	Aluminum Gray
6781264100	678299100	17 3/4" (450 mm)	3/4" (19 mm)	Aluminum Gray

Angled Brackets for Shoe Shelves

Side Brackets (C)	Central Brackets (D)	Application Length	Shelf Thickness	Finish
67841060	67841260	13 3/4" (350 mm)	3/4" (19 mm)	Dark Brown
678410100	678412100	13 3/4" (350 mm)	3/4" (19 mm)	Aluminum Gray

Rectangular Closet Rod

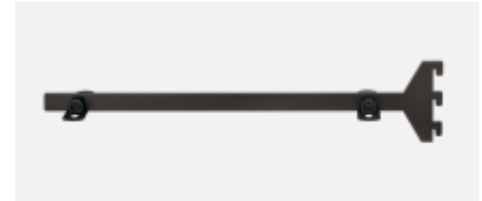
This rectangular rod with protective cover is designed to display clothing on hangers. Designed to be used with side supports at each end and center supports to easily connect multiple rods.

Ref.	Description	Length	Depth	Height	Dark Brown	Aluminum Gray
E	Rectangular Closet Rods	39 3/8" (1,000 mm)	5/16" (8 mm)	1 3/16" (30 mm)	67853860	678538100
F	Side Supports *	9/16" (14 mm)	9/16" (14 mm)	3 1/8" (80 mm)	67844660	678446100
G	Central Supports *	9/16" (14 mm)	9/16" (14 mm)	3 1/8" (80 mm)	67844760	678447100

* Requires M5 x 63/64" (25 mm) screws for installation. Sold separately.



A Side Bracket for Wooden Shelves or Cabinets



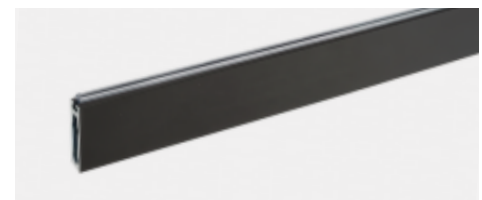
B Central Bracket for Wooden Shelves or Cabinets



C Angled Side Bracket for Shoe Shelves



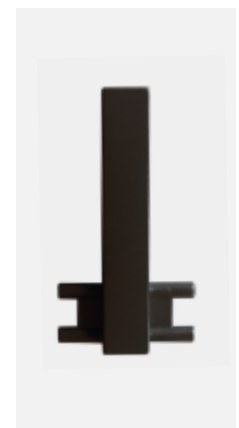
D Angled Central Brackets for Shoe Shelves



E Rectangular Closet Rod



F Side Support



G Central Support

RODS AND SUPPORTS

OVAL RODS



A Oval Steel Closet Rod

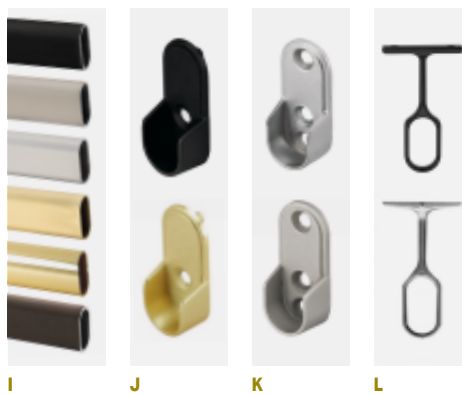


Oval Steel Closet Rods

Engineered for strength and stability, these oval steel rods deliver dependable support and make them ideal for larger, wide-span closet installations.



I Oval Aluminum Closet Rod



Oval Aluminum Closet Rods

Lightweight yet durable, these oval aluminum rods offer a practical and visually refined solution for closet design.

- ◆ Lightweight and easy to cut
- ◆ Seamlessly integrates with other closet accessories
- ◆ Available in six finishes

Oval Steel Closet Rods

Ref.	Length of 8' (2,44 m)	Length of 12' (3,66 m)	Dimensions	Thickness	Finish
A	1108315140	1112315140	5/8" x 1 1/8" (15 x 30 mm)	0,039" (1 mm), 20 gauge	Chrome

Supports for Oval Steel Closet Rods

Ref.	Description	Chrome
B	5 mm Pin Open Support	2113150140
C	Screw-In Open Support	2123150140
D	Central Support	2133150140

Screws included.

Ref.	Description	Chrome	Matte Black
E	Adjustable Closed Support	15103140	
F	Adjustable Central Support	15104140	
G*	Screw-In Closed Support	2131532140	2131532900
H	Central Support	2131533140	2131533900

Screws included except for 15103140 and 15104140.

* Can be mounted under a shelf or on the side of a cabinet.

Oval Aluminum Closet Rods

Ref.	Length	Dimensions	Thickness	Matte Brass	Polished Brass	Matte Chrome	Matte Nickel	Matte Black	Oil-Rubbed Bronze	Material
I	8' (2,44 m)	5/8" x 1 1/8" (15 x 30 mm)	0,06" (1.5 mm), 16 gauge	1108315160	1108315130	1108315174	1108315184	1108315900	1108315ORB	Aluminum

Supports for Oval Aluminum Closet Rods

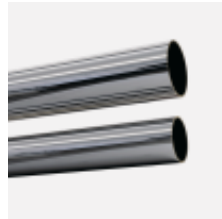
Ref.	Description	Matte Brass	Polished Brass	Matte Chrome	Matte Nickel	Matte Black	Oil-Rubbed Bronze	Material
J	5 mm Pin Open Support	2113150160	2113150130	2113150174	2113150184	2113150900	2113150ORB	Zamak
K	Screw-In Open Support	2123150160		2123150174	2123150184	2123150900	2123150ORB	Zamak
L	Central Support	2133150160		2133150174	2133150184	2133150900	2133150ORB	Zamak

Screws included, except for 2113150130.

Round Steel Closet Rods

Round steel rods stand out for their high load capacity, making them suitable even for the widest closets.

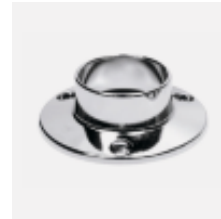
The 0.08" (2 mm) thick steel heavy duty round rods are ideal for hotels, boutiques, and other commercial spaces. They combine elegance and strength.



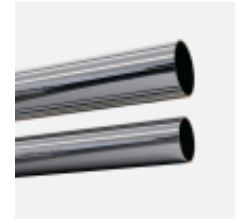
A and B



C



D



E and F



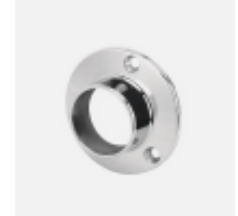
G 2211602140



G 2215602140



H 2211612140



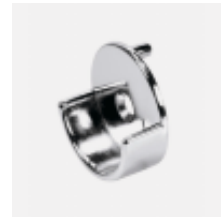
H 2215612140



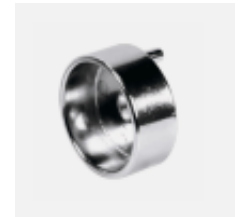
I 2211603140



I 2215603140



J



K

Round Steel Closet Rods

Ref.	Length of 8' (2.44 m)	Length of 12' (3.66 m)	Diameter Ø	Thickness	Finish
A	1210008140	1210012140	1" (25 mm)	0,047" (1,2 mm), 18 gauge	Chrome
B	1212508140	1212512140	1 1/4" (32 mm)	0,047" (1,2 mm), 18 gauge	Chrome

Supports for Round Steel Closet Rods

Ref.	Description	Diameter Ø of 1" (25 mm)	Diameter Ø of 1 1/4" (32 mm)	Finish
C	Screw-In Open Support	2210002140	2212502140	Chrome
D	Screw-In Closed Support	2210012140	2212512140	Chrome

Screws included.

Round Heavy Duty Steel Closet Rods

Ref.	Length of 8' (2.44 m)	Length of 12' (3.66 m)	Diameter Ø	Thickness	Finish
E	1211608140	1211612140	1 1/16" (27 mm)	0,08" (2 mm), 14 gauge	Chrome
F	1215608140	1215612140	1 5/16" (34 mm)	0,08" (2 mm), 14 gauge	Chrome

Supports for Round Heavy Duty Steel Closet Rods

Ref.	Description	Diameter Ø of 1 1/16" (27 mm)	Diameter Ø of 1 5/16" (34 mm)	Finish
G	Screw-In Open Support	2211602140	2215602140	Chrome
H	Screw-In Closed Support	2211612140	2215612140	Chrome
I	Central Support	2211603140	2215603140	Chrome
J	5 mm Pin Open Support		2215601140	Chrome
K	5 mm Pin Closed Support		2215611140	Chrome

Screws included.

RODS AND SUPPORTS

ROUND RODS



A Round Aluminum Closet Rod

Round Aluminum Closet Rods

Round aluminum rods provide a lightweight, strong, and durable solution for closet design.

- ◆ Lightweight and easy to cut
- ◆ Seamlessly integrates with other closet accessories
- ◆ Available in six finishes



A Round Aluminum Closet Rods

B and C Dowel Supports

D and E Screw-In Supports

F Central Support

Round Aluminum Closet Rods

Ref.	Length	Diameter	Thickness	Matte Brass	Polished Brass	Matte Chrome	Matte Nickel	Matte Black	Oil Rubbed Bronze	Material
A	8' (2.44 m)	1 5/16" (34 mm)	0.08" (2 mm), 14 gauge	1215608160	1215608130	1215608174	1215608184	1215608900	1215608ORB	Aluminum

Supports for Round Aluminum Closet Rods

Ref.	Description	Matte Brass	Polished Brass	Matte Chrome	Matte Nickel	Matte Black	Oil Rubbed Bronze	Material
B	5 mm Pin Open Support	2215601160	2215621130	2215601174	2215601184	2215601900	2215601ORB	Zamak
C	5 mm Pin Closed Support	2215611160		2215611174	2215611184	2215611900	2215611ORB	Zamak
D	Screw-In Open Support	2215602160		2215602174	2215602184	2215602900	2215602ORB	Zamak
E	Screw-In Closed Support	2215612160		2215612174	2215612184	2215612900	2215612ORB	Zamak
F	Central Support	2215603160		2215603174	2215603184	2215603900	2215603ORB	Zamak

Screws included, except for 2215621130.

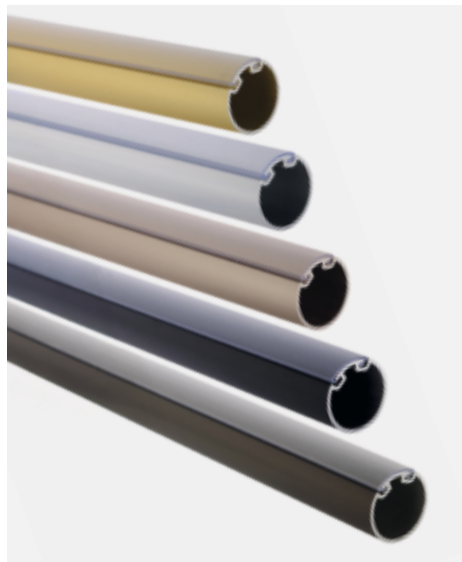
Capped Round Aluminum Closet Rods

Capped round rods add a modern, refined accent to any interior. Available in a variety of finishes, they are ideal for achieving a sleek, contemporary look.

- ◆ Equipped with a protective cover to prevent scratches and reduce unwanted noise
- ◆ Closed support includes two internal pins to prevent the rod and protective cover from rotating
- ◆ Can be easily cut to desired length
- ◆ Seamlessly integrates with other closet accessories
- ◆ Available in five finishes



A Capped Round Aluminum Closet Rod



A Capped Round Aluminum Closet Rods



B Open Support



C Closed Support



D Central Support

Capped Round Aluminum Closet Rods

Ref.	Length	Diameter	Thickness	Matte Brass	Matte Chrome	Matte Nickel	Matte Black	Oil Rubbed Bronze	Material
A	8' (2.44 m)	1 5/16" (34 mm)	0.06" (1.6 mm), 16 gauge	1215618160	1215618174	1215618184	1215618900	1215618ORB	Aluminum

Supports for Capped Round Aluminum Closet Rods

Ref.	Description	Matte Brass	Matte Chrome	Matte Nickel	Matte Black	Oil Rubbed Bronze	Material
B	5 mm Pin Open Support	2215601160	2215601174	2215601184	2215601900	2215601ORB	Zamak
C	5 mm Pin Closed Support	2215614160	2215614174	2215614184	2215614900	2215614ORB	Zamak
D	Central Support	2215603160	2215603174	2215603184	2215603900	2215603ORB	Zamak

Screws included.

RODS AND SUPPORTS

CAPPED RODS

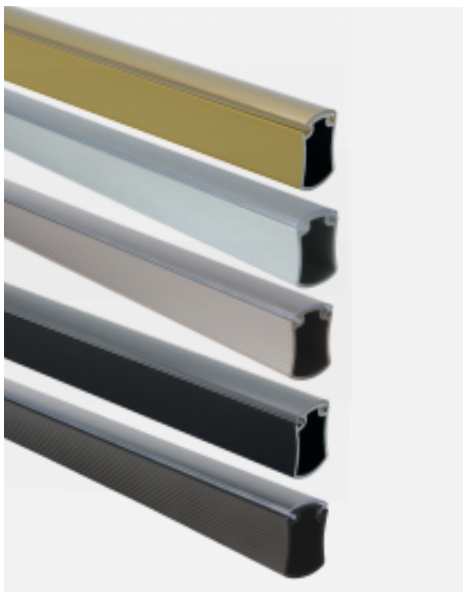


A Capped Hourglass Closet Rods

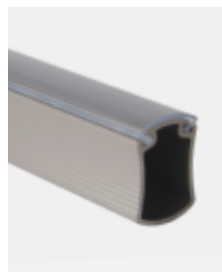
Capped Hourglass Closet Rods

Capped Hourglass rods bring a refined accent to any space. Their sleek, lightweight design adds a sense of sophistication to modern storage areas. Available in a range of finishes, these essential accessories elevate contemporary interiors with style and subtle elegance.

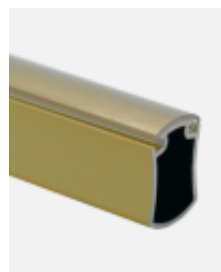
- ◆ Reversible design with one ribbed side and one smooth side
- ◆ Includes a protective cover to prevent scratches and reduce excessive noise
- ◆ Can be easily cut to desired length
- ◆ Seamlessly integrates with other closet accessories
- ◆ Locking collar keeps the rod securely in place
- ◆ Available in five finishes



A Capped Hourglass Closet Rods



A Ribbed side



A Smooth side



B Closed Support



C Central Support

Capped Hourglass Closet Rods

Ref.	Length	Dimensions	Thickness	Matte Brass	Matte Chrome	Matte Nickel	Matte Black	Oil Rubbed Bronze	Material
A	8' (2.44 m)	7/8" x 1 1/4" (22 x 32 mm)	0.07" (1.8 mm), 15 gauge	1432208160	1432208174	1432208184	1432208900	1432208ORB	Aluminum

Supports for Capped Hourglass Closet Rods

Ref.	Description	Matte Brass	Matte Chrome	Matte Nickel	Matte Black	Oil Rubbed Bronze	Material
B	5 mm Pin Closed Support	2432212160	2432212174	2432212184	2432212900	2432212ORB	Aluminum
C	Central Support	2432213160	2432213174	2432213184	2432213900	2432213ORB	Aluminum

Screws included.

Rectangular Closet Rods

Rectangular rods offer a sleek, modern touch to any interior. They blend perfectly into refined designs while providing a practical and visually appealing solution.

Rectangular Rods

- ◆ Made of high-quality steel for exceptional strength and durability
- ◆ Designed for undermount installation



A Rectangular Closet Rod



B Closed Support



C Central Support

Capped Rectangular Rods

- ◆ Can be cut to size for a precise fit
- ◆ Designed for undermount or side-mounted installation
- ◆ Integrated plastic cover helps prevent scratches and reduces noise



D Capped Rectangular Closet Rod



E Open Support for side mounting



F and G Closed/Central Support for under-shelf mounting

Rectangular Closet Rods

Ref.	Length	Width	Height	Thickness	Chrome	Aluminum Gray	Material
A	94 1/2" (2.4 m)	3/8" (10 mm)	1" (25 mm)	0.047" (1.2 mm), 18 gauge	25102140	25102010	Steel

Supports for Rectangular Closet Rods

Ref.	Description	Width	Height	Chrome	Aluminum Gray	Material
B	Closed Support	1 1/16" (18 mm)	2 3/4" (70 mm)	85700140	85700010	Zamak
C	Central Support	1 1/16" (18 mm)	2 3/4" (70 mm)	86700140	86700010	Zamak

Screws not included.

Capped Rectangular Closet Rods

Ref.	Length	Width	Height	Thickness	Moka	Material
D	9' 10" (3 m)	7/16" (12 mm)	1 1/4" (32 mm)	3/32" (2.5 mm)	1310312060	Aluminum

Supports for Capped Rectangular Closet Rods

Ref.	Description	Dimensions	Moka	Material
E	Open Support	7/16" x 15/16" x 1 9/16" (12 x 24 x 40 mm)	2323120060	Zamak
F	Closed Support	2 15/16" x Ø 3/4" (75 x Ø 19 mm)	2323121060	Zamak
G	Central Support	2 15/16" x Ø 3/4" (75 x Ø 19 mm)	2333121060	Zamak

Screws included.