

## Waterproof Roof



✓ A corrugated roof was added to help drain water and provide dual protection from water and insulation.



x Color plate capping, waterproof tape splicing gap, after a long time after the wind and sun have the risk of falling off, resulting in water leakage.

## Bearing Floor



Cement sanding floor :  
high hardness,  
no asbestos,  
no crack.

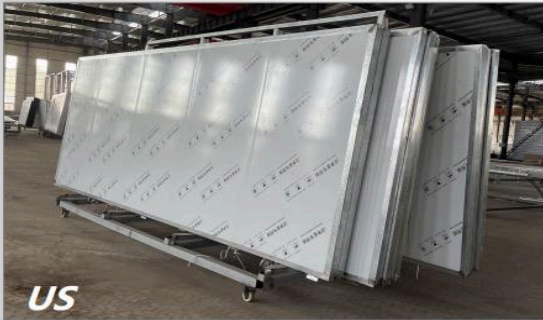


Strong Solid Hinge Axis

Strong Adjustable Support Feet (installed after arrival)



## ***Modular Wall Panels***

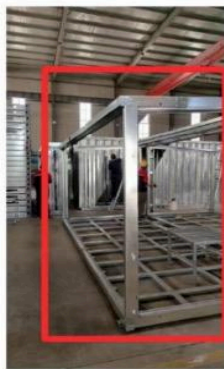


- ✓ A whole wall panel, a truly modular house.
- ✓ Easy to repair and replace the electric and accessories.
- ✓ 0.4mm steel sheet, smooth flat surface, tight seams.



- x Unit wall panels mounted directly on the frame.
- x Every repair has to repairing the entire frame.
- x 0.2mm steel sheet, low flatness, easy to deform

## ***Paint***



**Full hot dip galvanized profile, electrostatic spray, corrosion and rust prevention effect is better.**

## Frame



- ✓ Strong corner lifting components, 20mm thick
- ✓ Denser strong purlins, high load-bearing capacity!

## Layout



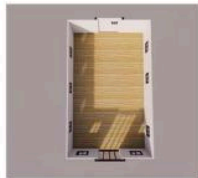
**20FT  
Empty House**



**20FT  
One Bedroom**



**20FT  
Two Bedrooms**



**40FT  
Empty House**



**40FT  
Two Bedrooms**



**40FT  
Three Bedrooms**



40ft 4 bedrooms

**Support more customization**



## Indoor Height



Insulation	EPS Sandwich Board
Thickness	0.3mm steel sheet+75mm EPS +0.3mm steel sheet
Thermal conductivity	0.033~0.038

## Exterior Color Steel Board

				
C-01	C-02	C-03	C-04	C-05
White (free)	Wood Color	Gray	Crimson	Camouflage
20ft \$ 100, 30ft \$ 150, 40ft \$ 200				



C-01



C-02



C-03



C-04



C-05

## Floor 2mm PVC

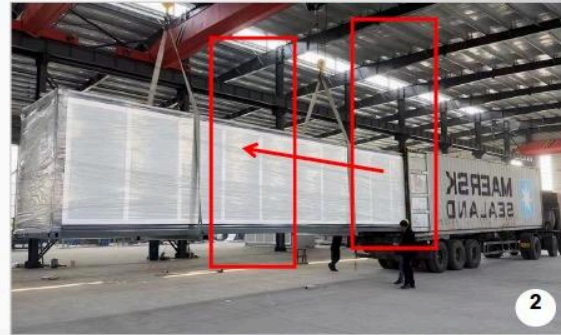
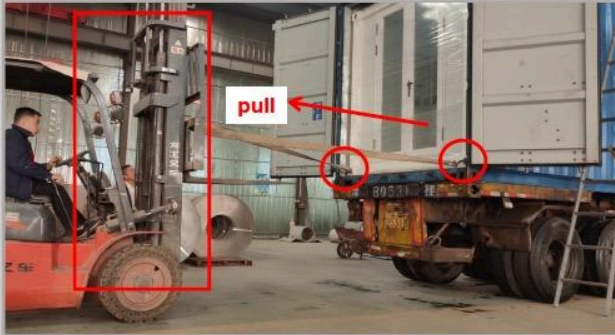




**PVC FLOORING**



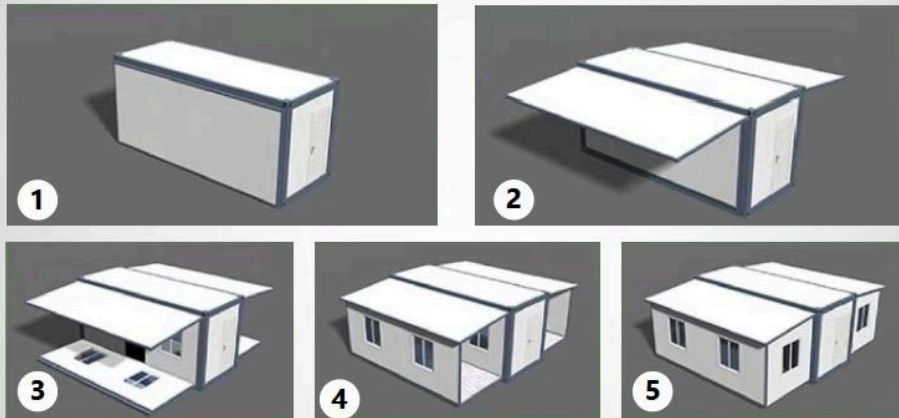
## ***Unloading Instructions***



## ***Loading Instructions***



## ***Installation Instructions***



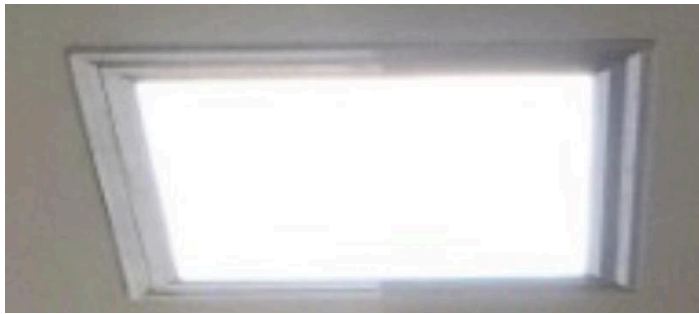
We will also make installation videos for customized complex special houses.

## ***Number of sockets***



Total number of sockets in room: Five holes 16 (kitchen 4, bathroom 4, bedroom 2\*2, living room 4) three holes 1








LED LIGHTING



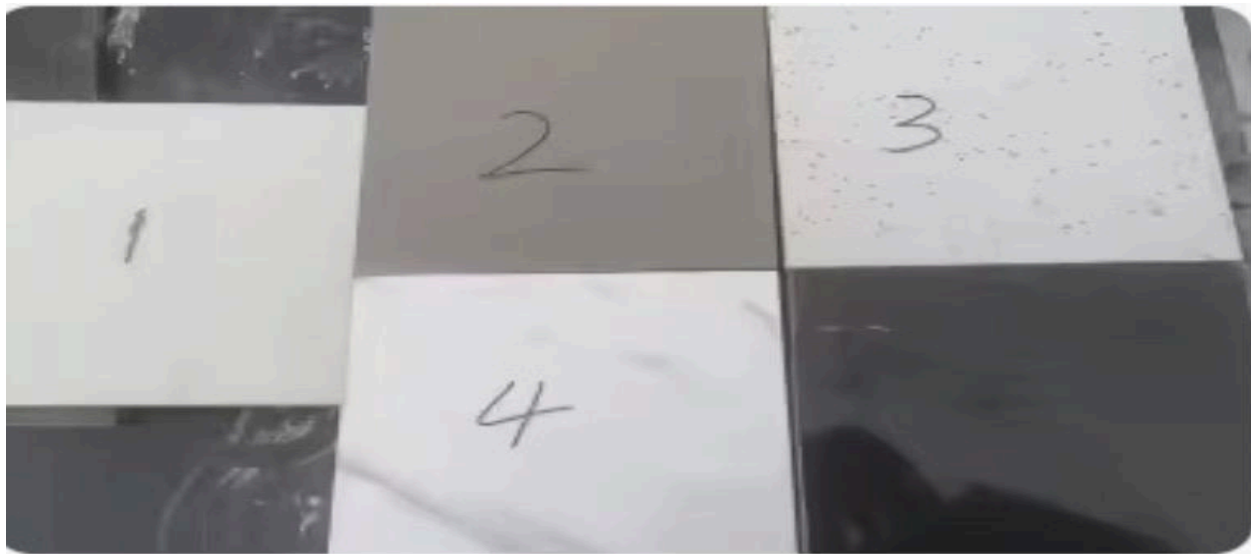
ROOF JOIN COVER

STANDARD L-SHAPED KITCHEN TOP CUPBOARDS ARE EXTRA

*Kitchen*

			
K-1	K-2	K-3	K-4

Notice: cabinet standard height 60cm, can be customized to 90cm or other sizes cabinets.  
Packed shipped, customers have to fix them to floor and wall by themselves.



bench tops



QUARTZ BENCH TOPS



Name	Photo	Extra Charge	Photo	Photo
Wash basin style		No		
Wash basin style		No		

Name	Photo	Extra Charge	Photo	Photo
Wash basin style		No		



laundry cabinetry



BATHROOM WALLS

Fan bathroom



## Bathroom selection

Dry and wet separate bathroom



## *Installed Bathroom*



B-1	B-2	B-3	B-4



**METAL INTERNAL DOORS WOOD IS EXTRA**



**DOUBLE GLAZED DOORS  
REFLECTIVE GLASS**



PVC WINDOW FRAMES  
DOUBLE GLAZED  
FLY SCREENS  
REFLECTIVE WINDOWS