

THE MADISON ARMAN COLLECTION

NO.
WORK
TITLE
DATA

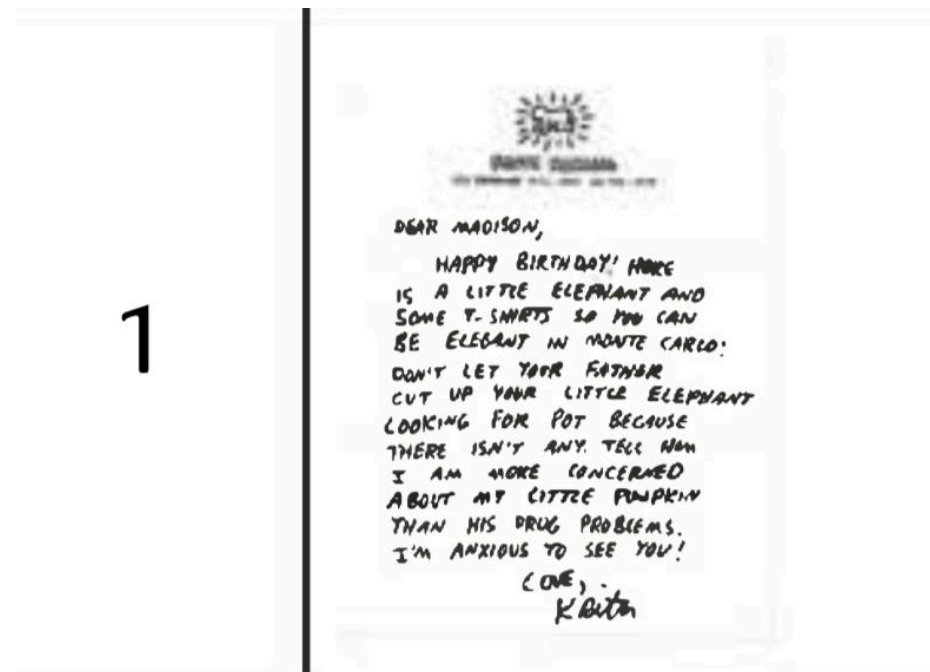
1

Love, Keith (Happy 1st Birthday Hand Written Letter)

The Madison Arman Collection

c. August 8, 1988

Drawing on Paper, Pen Ink on Paper.



2

2



Of

Madison:

3

MADISON - BYE. I you.

See You Soon

The Madison Arman Collection

c. 1987-1988

Drawing on Paper

3

MADISON -
BYE. I
LOVE YOU.
SEE YOU
SOON -

Keith



4

Polaroid 1 (Piggyback)
The Madison Arman Collection
March 15, 1988
Photograph by Yves Arman

4



Madison - Kohn
The map 29th March 88

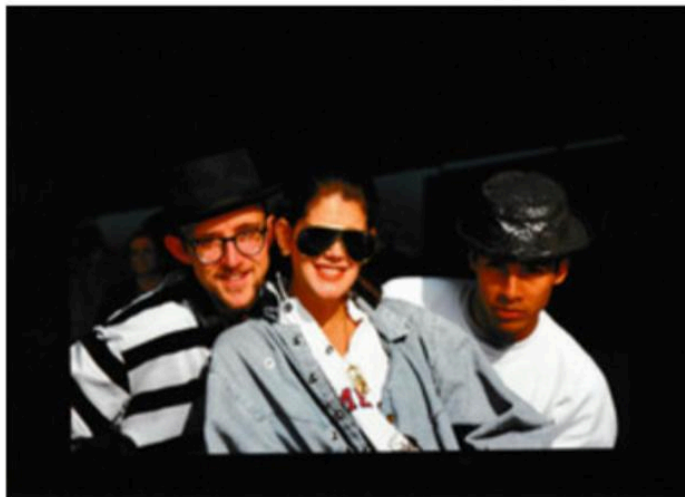
5
Polaroid 2 (Debra and Haring holding
Madison)
The Madison Arman Collection
March 1988
Photograph by Yves Arman

5



6
Keith Haring, Debra Arman, and Juan Rivera
The Madison Arman Collection
1988
Photograph by Yves Arman

6



7
Keith on Railing
The Madison Arman Collection
1988
Photograph by Yves Arman

7



8

Animals for Madison

The Madison Arman Collection

1988

Drawing on Paper

8



9

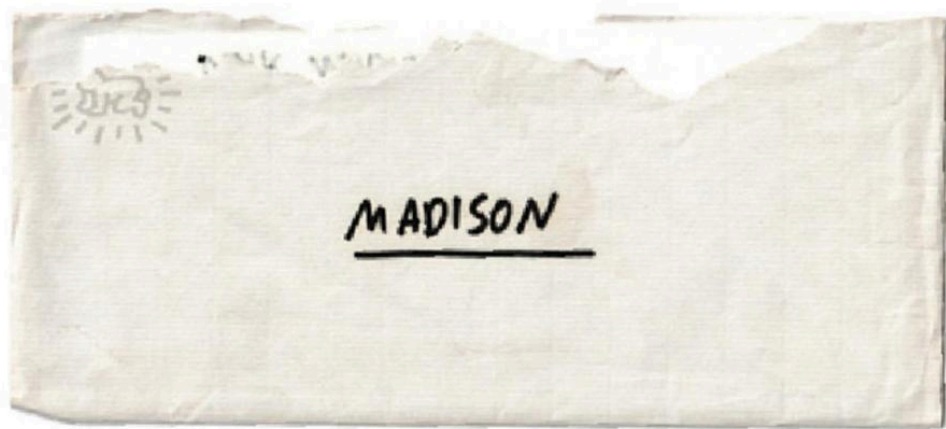
MADISON

Envelope for Madison

The Madison Arman Collection

1988

9



10

Photograph of Keith Haring, Debra, and
Juan Rivera sunbathing in the south of France
The Madison Arman Collection
Photograph

10



11

Keith Haring and Debra Modeling Tshirts Painted by Keith Haring
The Madison Arman Collection
1988
Photograph

11



12

Keith Haring Feeding Madison
The Madison Arman Collection
1988
Photograph

12



13

Two Photographs of Debra and Madison at the Emilie Palace Apartment bedroom painted floor to ceiling by Keith Haring
The Madison Arman Collection
March 1988
Photograph (1) of Painted Apartment Walls, Photograph (2) of Debra and Madison at the Emile Palace, Monte Carlo in front of the Keith Haring painted walls

13



14

Keith Haring and GrandMere/Grandmother of Madison Arman, mdme. Elaine Rodrigue, on steps of the Arman Studio in Vence, France.

The Madison Arman Collection

1988

Photograph

14



15

Portrait of the Boober Skeeber

The Madison Arman Collection

1987

Sumi ink and gouache on paper

15



16

Radiant Baby Room of Madison Arman **PHOTOGRAPHS FROM THE Émilie Palace MONTE CARLO**

The Madison Arman Collection

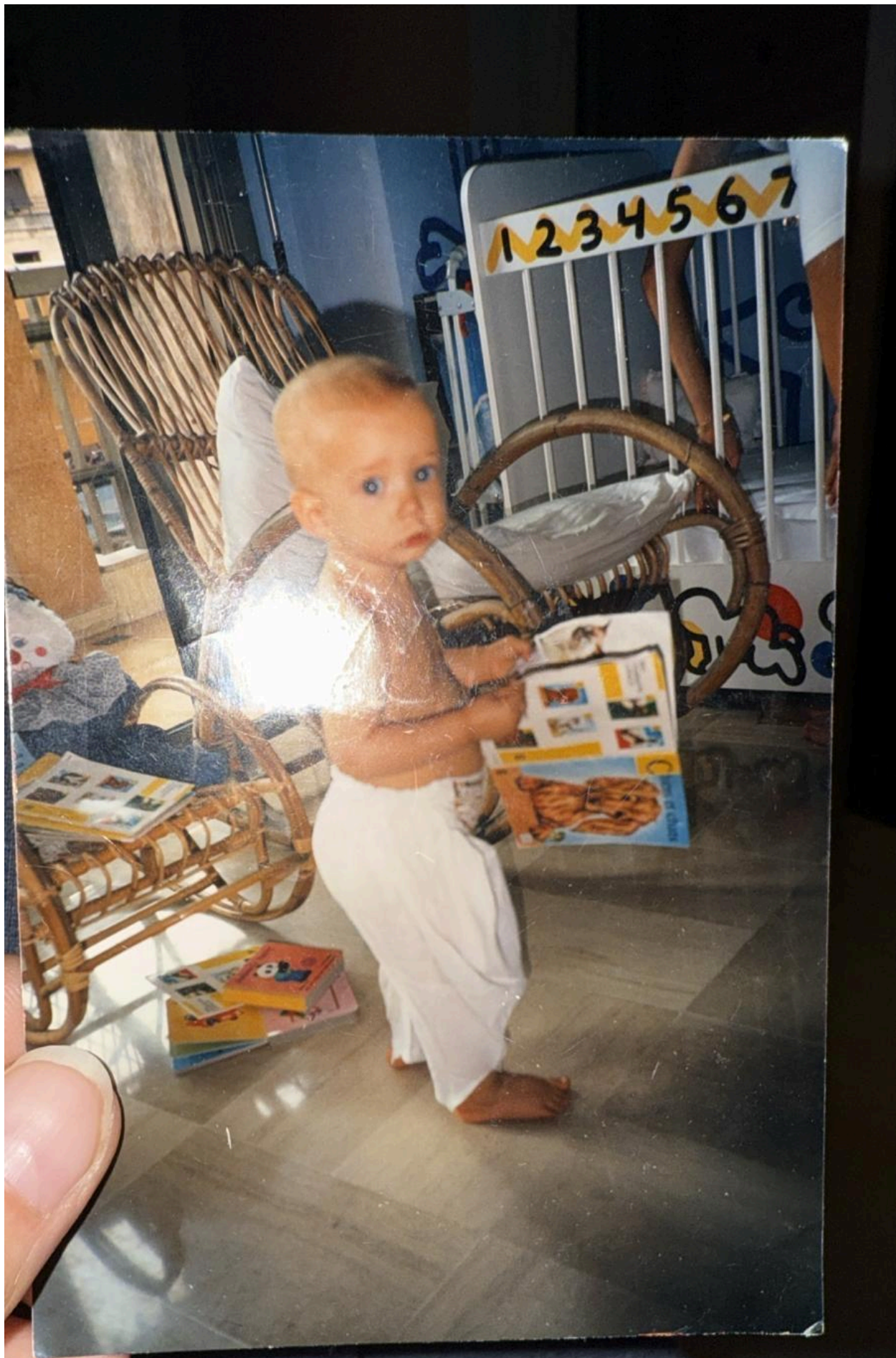
1987-1990

Photographs

Photographer Unknown

Walls, Crib, Doors all painted by Keith Haring in 1987 for Madison Arman.





17

Social Scene Monaco

Keith Haring

The Madison Arman Collection

SUMMER 1988

Mixed Media and India ink on Monegasque cardboard

25 x 41 cm (9.8 x 16.3 in)



Past Auction

Keith Haring

American, 1958–1990

Follow

Social scene Monaco, 1988



Medium

mixed media and India ink on
cardboard

Size

25 × 41.5 cm. (9.8 × 16.3 in.)



Mm

BORGIA. INC.

Fine Art Acquisition & Advisory

The Madison Arman Collection