

# Forest Lakes Community Meeting



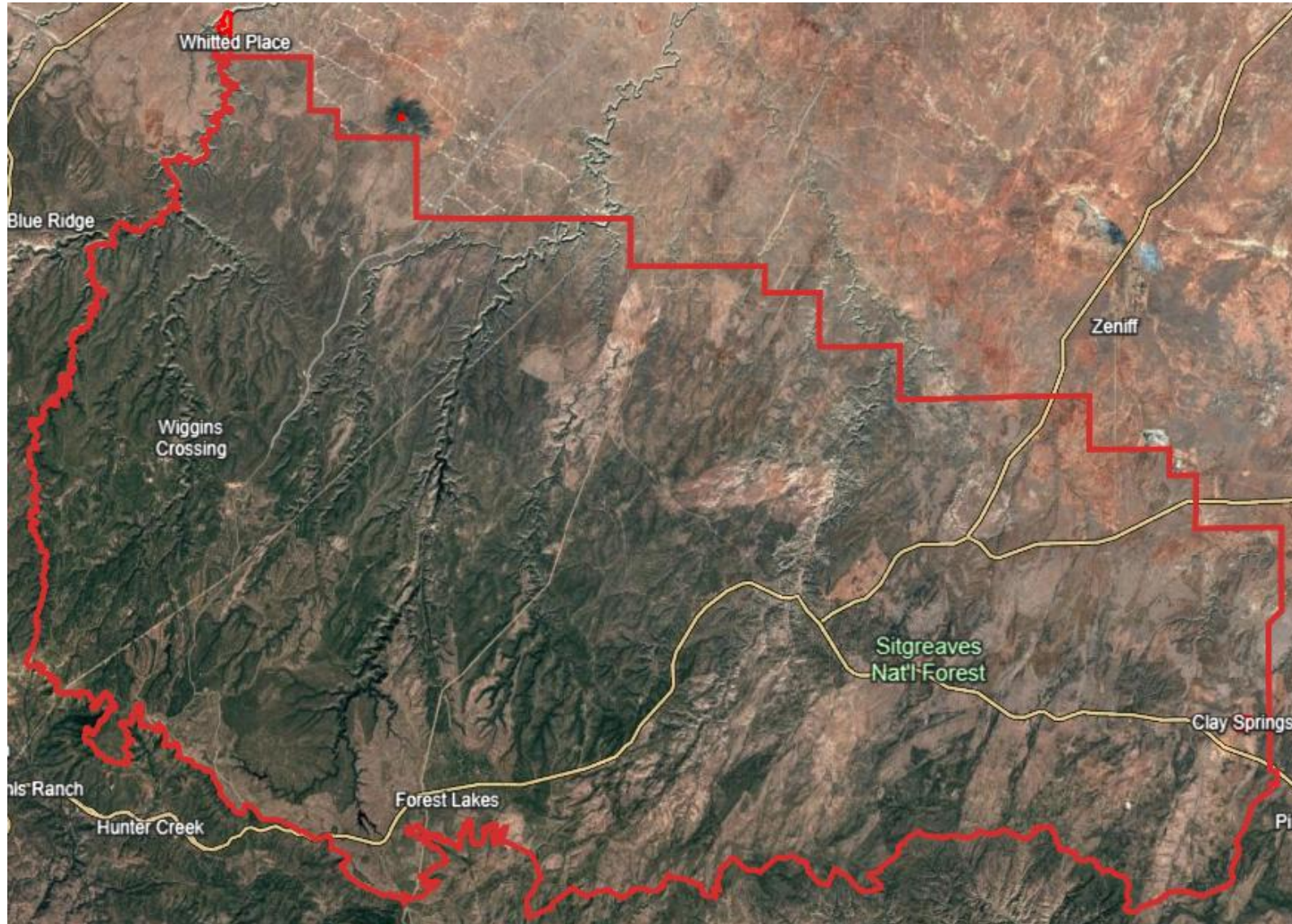
USFS

Apache-Sitgreaves National Forests

Black Mesa Ranger District



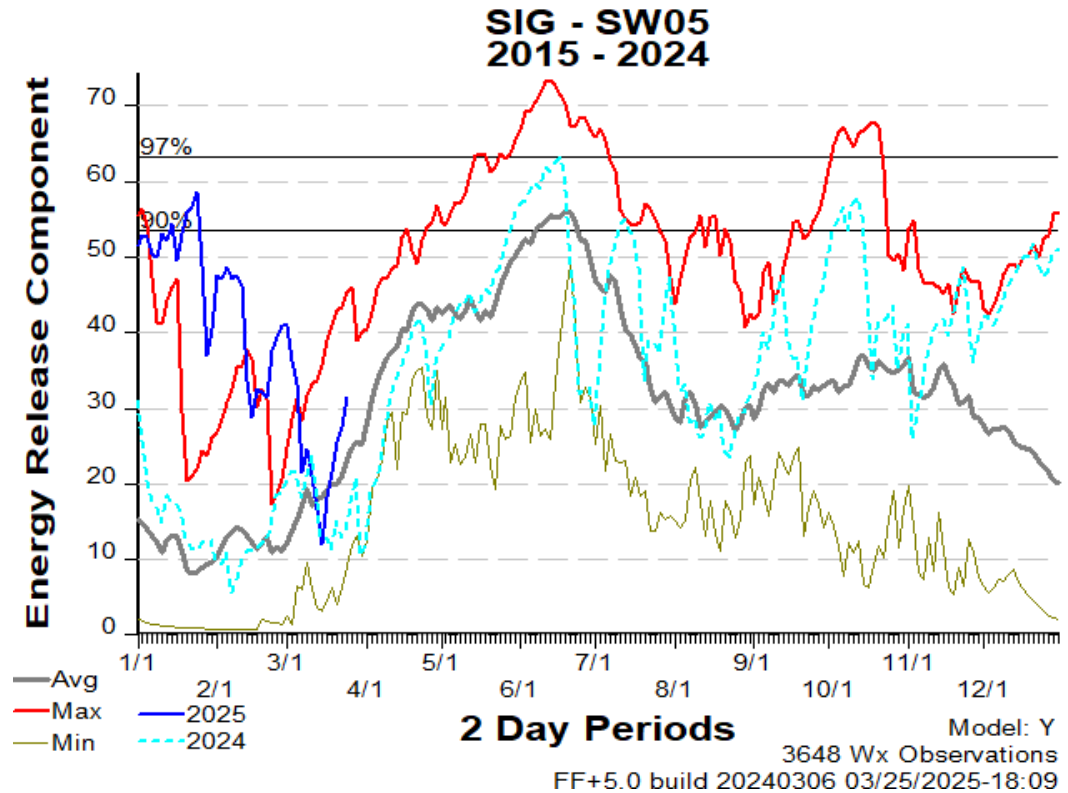
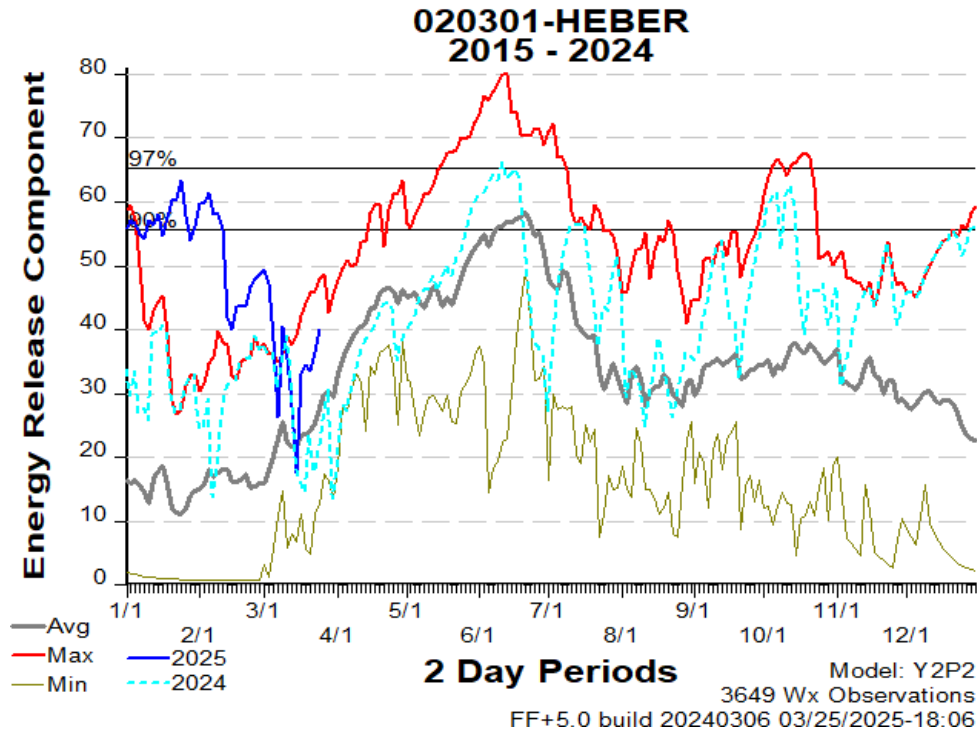
# Black Mesa Ranger District



# ERC: Energy Release Component

- The Energy Release Component (ERC) is a fire danger index used by fire managers to track fire season and guide suppression and fuel treatment operations. It represents the cumulative drying effect of daily meteorology on fuel moisture, particularly live and dead fuels, and is a build-up index, meaning its values are carried over from day to day.

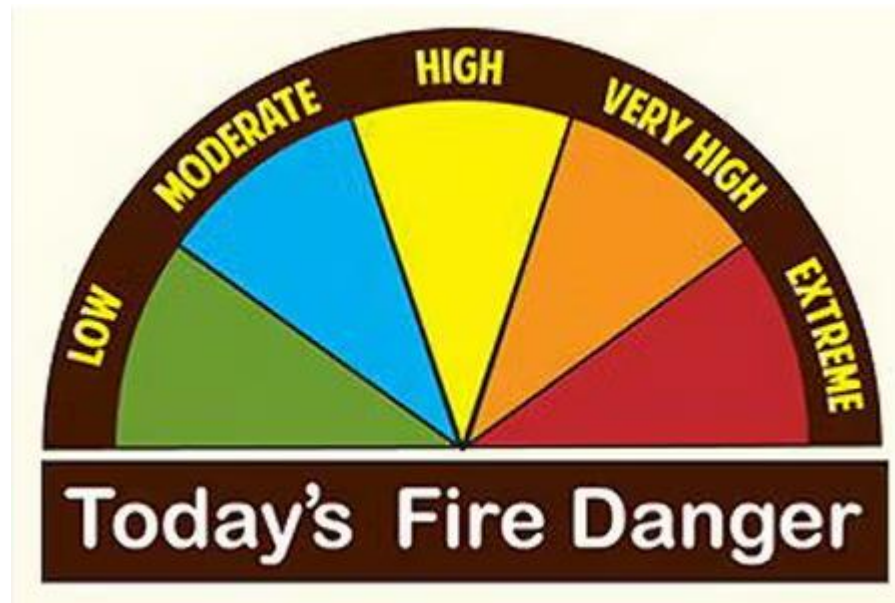
# ERC Charts





# National Fire Danger Rating System (NFDRS)

- The National Fire Danger Rating System (NFDRS) is a system used by fire managers to assess and predict wildfire danger based on factors like fuel, weather, and topography, ultimately informing decisions about fire suppression and prevention efforts.



# Fire Restrictions



## STAGE 1 FIRE RESTRICTIONS

Due to wildfire danger, the following temporary restrictions are in effect.

 	<b>FIRES</b> <b>PROHIBITED:</b> Building, maintaining, attending, or using a fire, campfire, or stove fire, including charcoal and briquettes.
 	<b>SMOKING</b> <b>PROHIBITED:</b> Smoking, except within an enclosed vehicle or building, a developed recreation site, or while stopped in an area at least three feet in diameter that is barren or cleared of any flammable material.
  <b>CAMPFIRE</b> Fires inside a Forest Service provided structure within a designated area	  <b>PROPANE FIRES</b> Persons using a stove or grill that is solely fueled by pressurized liquid petroleum or pressurized liquid petroleum gas (LPG) fuels.



Further information regarding this Order may be obtained at the Apache-Sitgreaves National Forests Supervisor's Office in Springerville, Arizona (928) 333-6280



USDA is an equal opportunity provider, employer, and lender.



## STAGE 2 FIRE RESTRICTIONS

Due to wildfire danger, the following temporary restrictions are in effect.

**FIRES**     

**PROHIBITED:** Building, maintaining, attending, or using a fire, campfire, or stove Fire.  
**Exemption:** Propane stove or grill that is fueled by pressurized liquid petroleum gas (LPG) that can be turned off.

  <b>SMOKING</b> <b>PROHIBITED:</b> Smoking, except within an enclosed vehicle or building, a developed recreation site, or while stopped in an area at least three feet in diameter that is barren or cleared of any flammable material.	  <b>WELDING</b> <b>PROHIBITED:</b> Blasting, welding, or operating an acetylene or other torch with open flame from 9:00 am to 8:00 pm.
  <b>EXPLOSIVES</b> <b>PROHIBITED:</b> Using an explosive. This includes but is not limited to fuses, blasting caps, fireworks, rockets, exploding targets, tracer and incendiary ammunition.	  <b>CHAINSAWS</b> <b>PROHIBITED:</b> Operating a chainsaw, generator or other equipment powered by an internal combustion engine from 9 a.m. to 8 p.m.



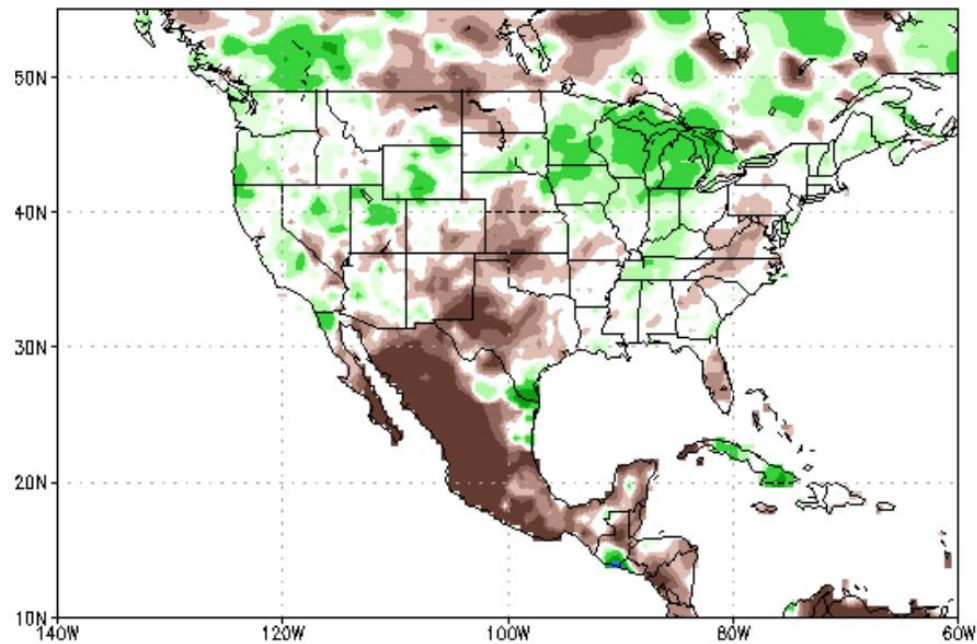
Further information regarding this Order may be obtained at the Apache-Sitgreaves National Forests Supervisor's Office in Springerville, Arizona (928) 333-6280



USDA is an equal opportunity provider, employer, and lender.

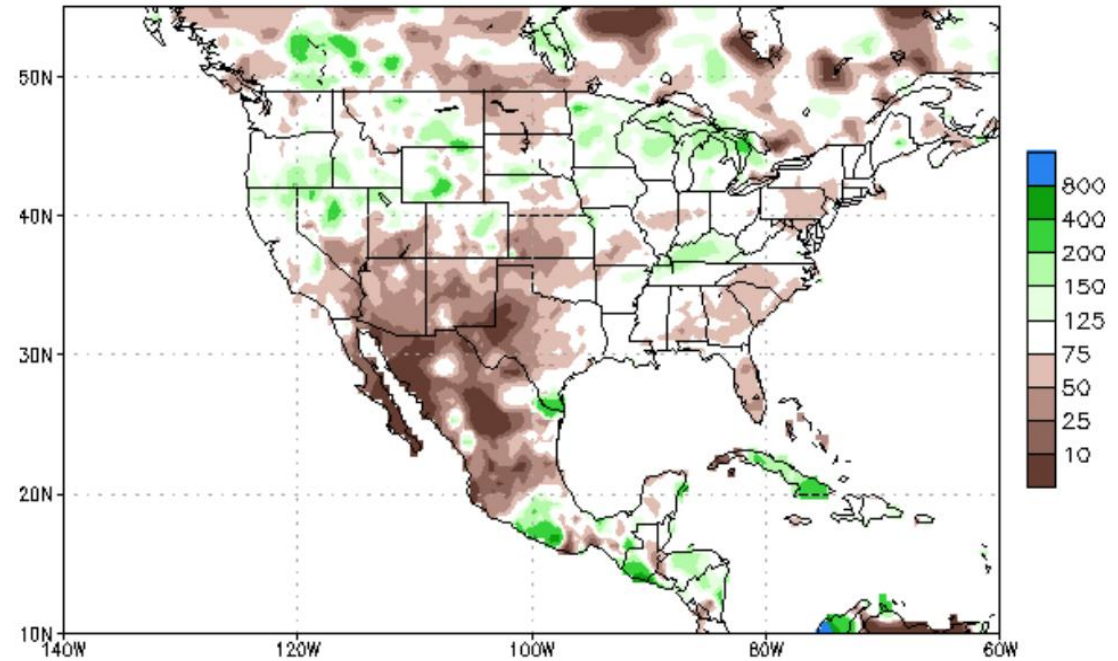
# Precipitation

30-day Accumulated Prep % of Normal 05MAR2025-03APR2025



Data Source: CPC Unified (gauge-based & 0.5x0.5 deg resolution) Precipitation Analysis Climatology (1991-2020)

90-day Accumulated Prep % of Normal 04JAN2025-03APR2025

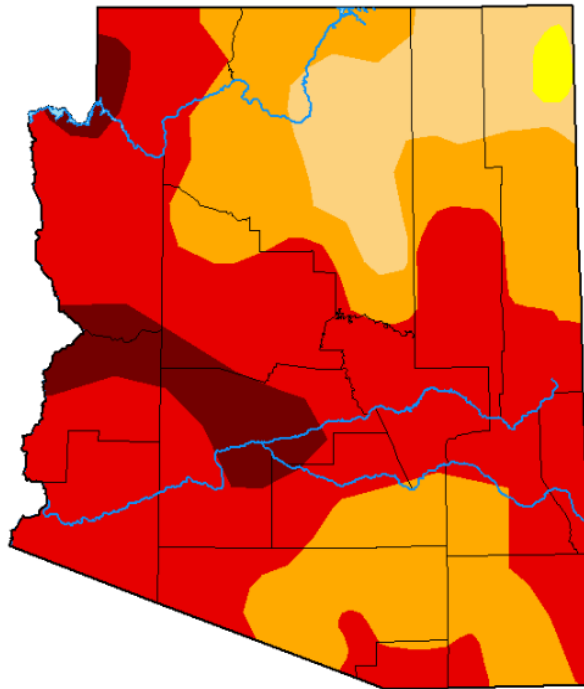


Data Source: CPC Unified (gauge-based & 0.5x0.5 deg resolution) Precipitation Analysis Climatology (1991-2020)

# Drought

## 2025

### U.S. Drought Monitor Arizona



**April 1, 2025**

(Released Thursday, Apr. 3, 2025)

Valid 8 a.m. EDT

Drought Conditions (Percent Area)

	None	D0	D1	D2	D3	D4
Current	0.00	0.74	11.15	29.66	51.24	7.21
Last Week 03-25-2025	0.00	0.74	11.21	32.41	48.43	7.21
3 Months Ago 12-31-2024	3.74	19.69	32.59	29.94	14.03	0.00
Start of Calendar Year 01-01-2025	3.74	19.63	31.09	31.50	14.03	0.00
Start of Water Year 10-01-2024	27.62	32.48	35.29	4.61	0.00	0.00
One Year Ago 04-02-2024	21.78	44.55	26.96	4.89	1.81	0.00

Intensity:

None	D2 Severe Drought
D0 Abnormally Dry	D3 Extreme Drought
D1 Moderate Drought	D4 Exceptional Drought

The Drought Monitor focuses on broad-scale conditions. Local conditions may vary. For more information on the Drought Monitor, go to <https://droughtmonitor.unl.edu/About.aspx>

Author:

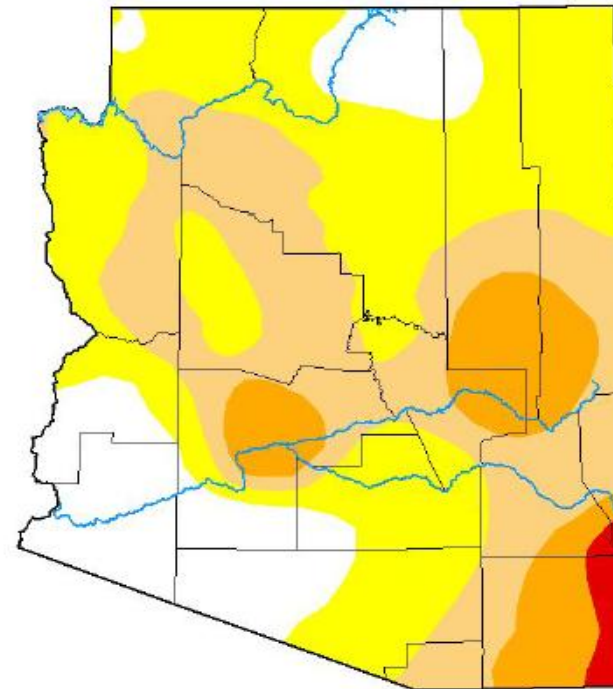
David Simeral  
Western Regional Climate Center



[droughtmonitor.unl.edu](https://droughtmonitor.unl.edu)

## 2024

### U.S. Drought Monitor Arizona



**March 26, 2024**

(Released Thursday, Mar. 28, 2024)

Valid 8 a.m. EDT

Drought Conditions (Percent Area)

	None	D0-D4	D1-D4	D2-D4	D3-D4	D4
Current	17.42	82.58	42.56	13.10	1.81	0.00
Last Week 03-19-2024	17.42	82.58	42.56	13.19	1.83	0.00
3 Months Ago 12-26-2023	10.98	89.02	53.37	33.54	5.75	0.00
Start of Calendar Year 01-02-2024	5.62	94.38	53.37	33.54	5.75	0.00
Start of Water Year 09-26-2023	8.12	91.88	47.06	22.74	5.34	0.00
One Year Ago 03-28-2023	80.38	19.62	7.52	0.03	0.00	0.00

Intensity:

None	D2 Severe Drought
D0 Abnormally Dry	D3 Extreme Drought
D1 Moderate Drought	D4 Exceptional Drought

The Drought Monitor focuses on broad-scale conditions. Local conditions may vary. For more information on the Drought Monitor, go to <https://droughtmonitor.unl.edu/About.aspx>

Author:

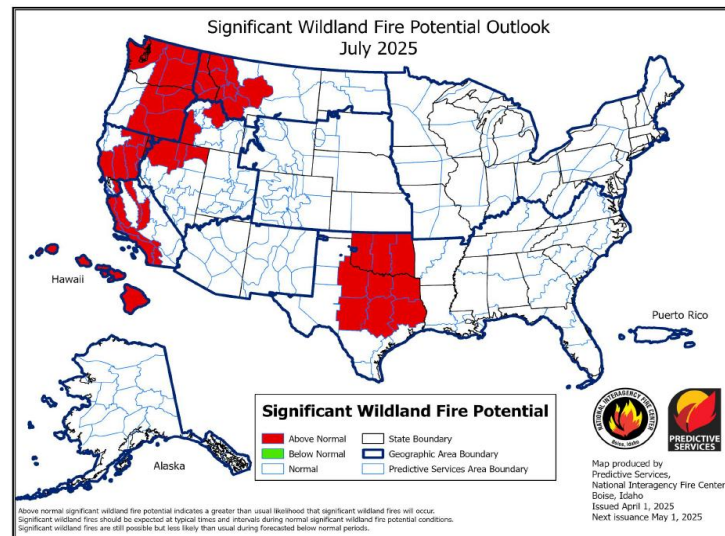
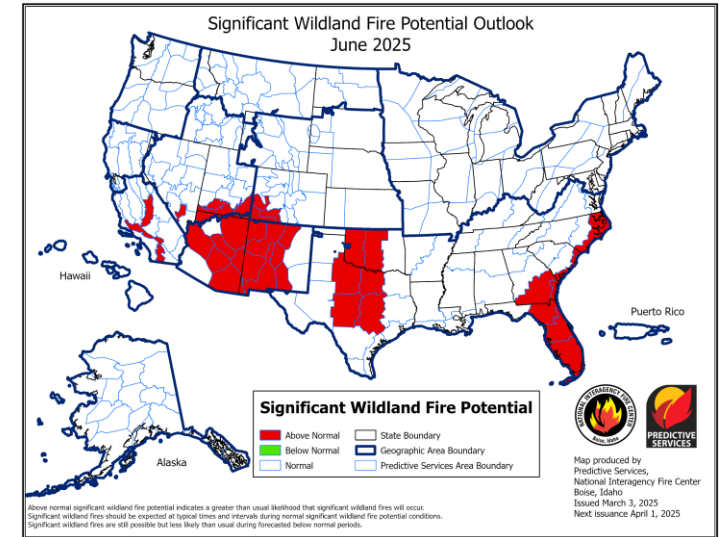
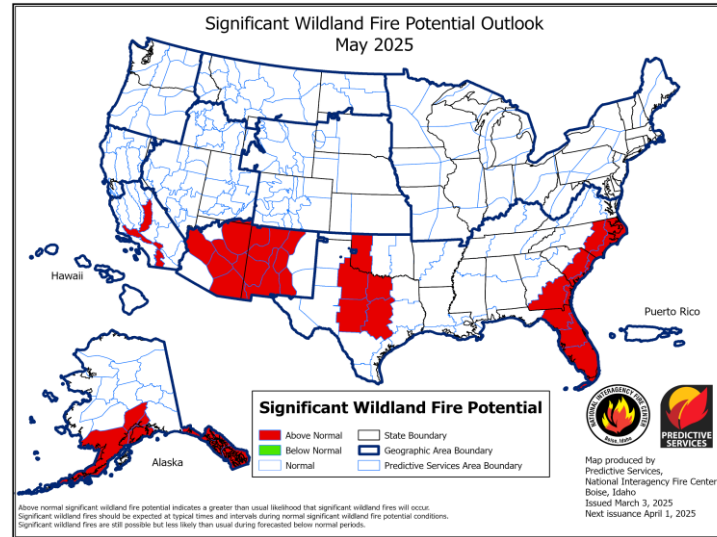
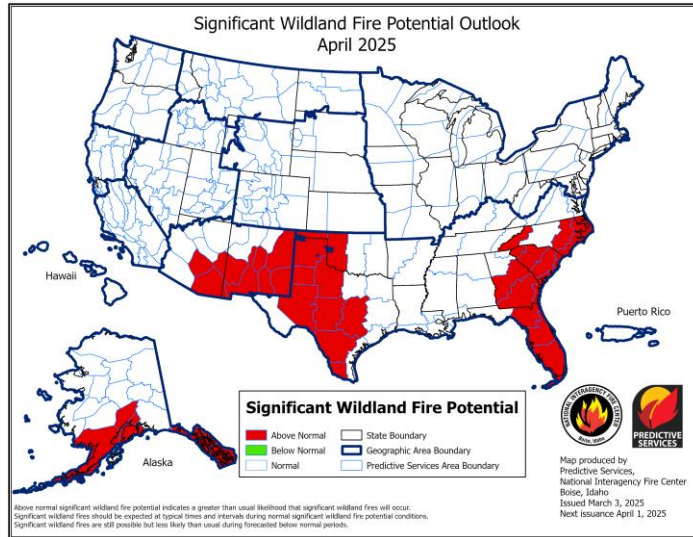
Brad Rippey  
U.S. Department of Agriculture



[droughtmonitor.unl.edu](https://droughtmonitor.unl.edu)



# Fire Danger Outlook



# Black Mesa Staffing Levels

- 1-Type 3 engine
- 4-Type 6 engines
- 1–10-person Initial Attack crew
- 1- Water Tender
- 1-Type 2 Dozer
- Black Mesa IHC (Hot Shots)
- 3 Lookouts
- 5 Misc overhead



# Engine Types



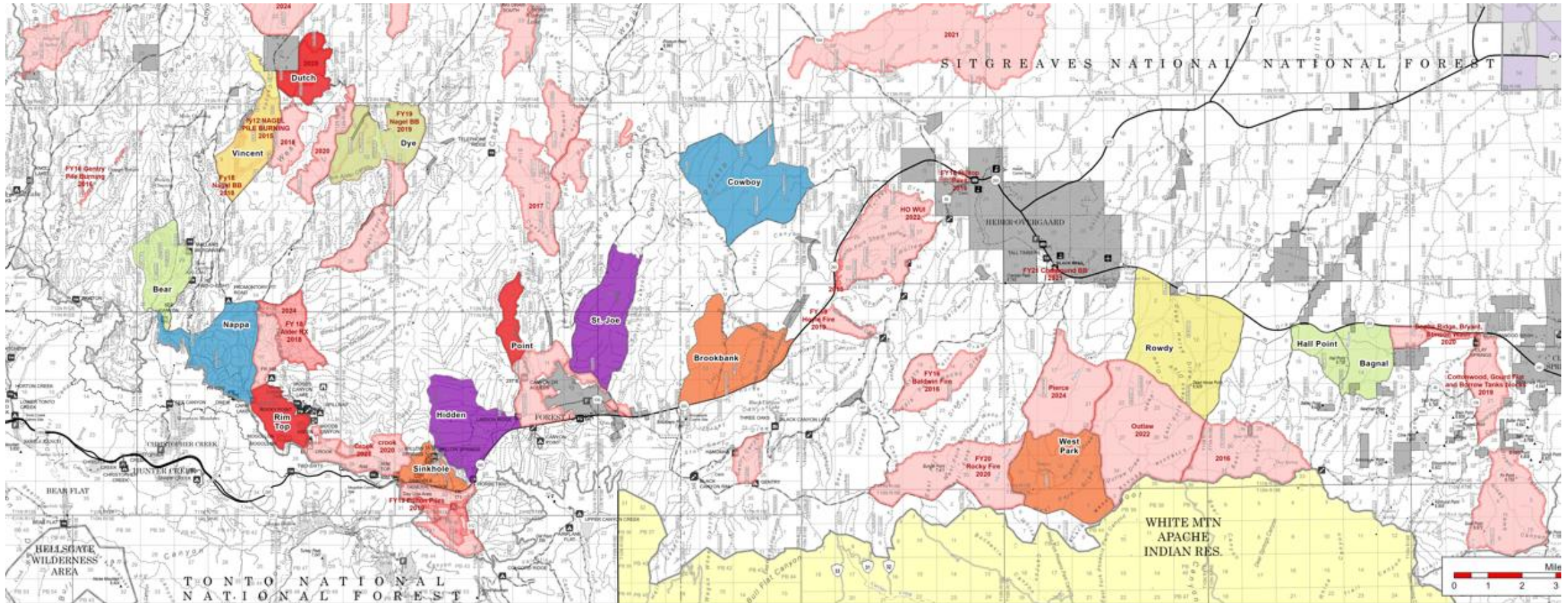
Type 6 Engine



Type 3 Engine



# Planned Prescribed fires/10 year history



## Black Mesa R.D. Proposed Burn Blocks FY25 - FY30

Burn Blocks

Burn Block	FY Planned	NEPA Name	Acres
Point	2025	Larson	814
Dutch	2025	Nagel	1,300
Rim Top	2025	Rim Lakes	1,286
West Park	2026	RCRX	3,855
Brookbank	2026	Rim Country	3,647
Sinkhole	2026	Rim Lakes	875
Vincent	2027	Nagel	2,256
Rowdy	2027	RCRX	5,852

Burn Block	FY Planned	NEPA Name	Acres
Dye	2028	Nagel	2,691
Hall Point	2028	RCRX	1,096
Bagnal	2028	RCRX	1,781
Bear	2028	Rim Lakes	2,065
Cowboy	2029	Rim Country	4,875
Nappa	2029	Rim Lakes	3,046
Hidden	2030	Larson	2,976
St. Joe	2030	Larson	3,185

Acres by Year

FY Planned	Total Acres
2025	3,400
2026	8,377
2027	8,108
2028	7,634
2029	7,921
2030	6,161

Burn Blocks

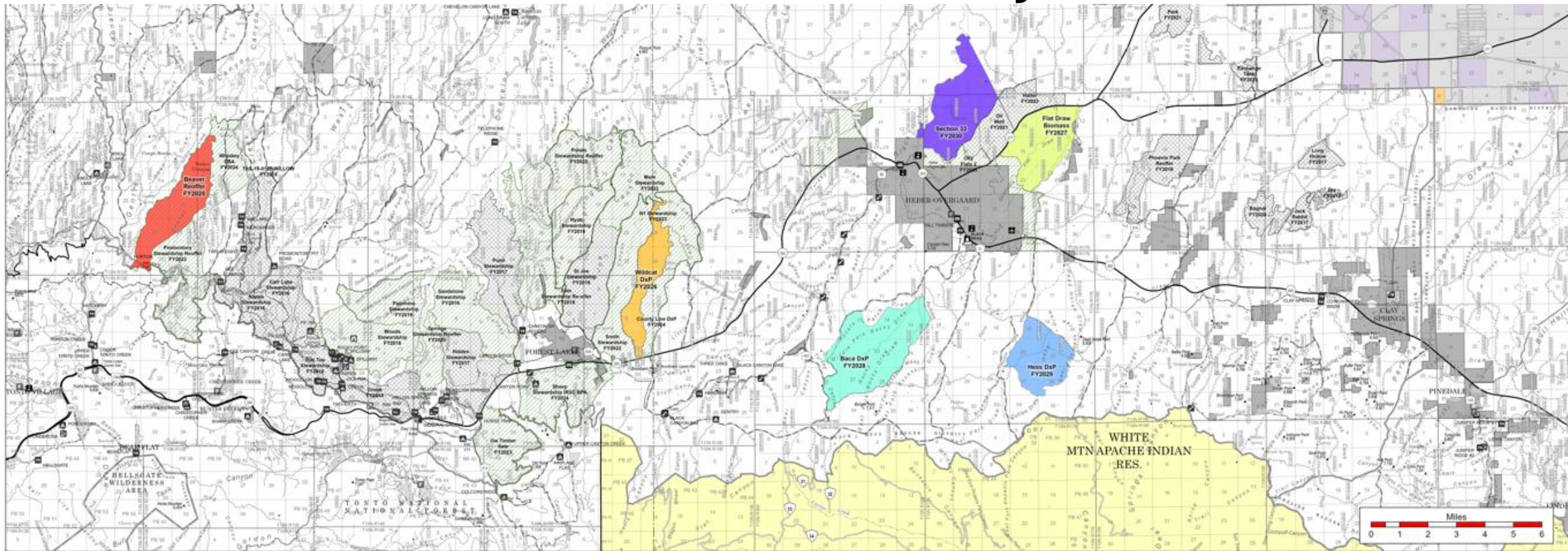
FY Planned
2025
2026
2027
2028
2029
2030

Rx and Wildfire 2015

to Present
Forest Service
BLM
Tribal Land
Other; Private
State Trust Land



# Planned Timber Projects



# Black Mesa Timber Sale Action Plan FY25 - FY30

Sale Name	Planned FY Sold	NEPA	Acres
Beaver Reforest	2025	4FRI Rim Country	3,067
Wildcat DXP	2026	4FRI Rim Country	2,116
Flat Draw Biomass	2027	(PALS) HEBER ALLOTMENT ANALYSIS	3,098
Baca DXP	2028	4FRI Rim Country	4,949
Hess DXP	2029	(PALS) 4FRI RIM COUNTRY PROJECT	2,566
Section 33	2030	Heber Allot	3,759



# Questions?

- References

- <https://www.weather.gov/fgz/fire-weather>