

## THANKSGIVING WEEK WEATHER REPORT

If you live in Forest Lakes or plan to be at your mountain home for Thanksgiving, please be aware of and prepared for weather.

A significant winter storm is predicted in Northern Arizona early Thursday through early Saturday. Difficult to impossible travel conditions are anticipated Thursday and Friday.

Forest Lakes is predicted to get 20 - 30 inches of snow. This will have major travel impacts on our highways and roads in Forest Lakes.

The Editor is reporting as much information (and every graph!) that she can find so that you can enjoy the Thanksgiving holidays without a lot of E-blast interruptions.

If you can change your Thanksgiving plans to not be in Forest Lakes, it is strongly advised. If you can't, then you know what to do to be safe, well supplied, stay warm, and be winter prepared.

The latest location-specific snow forecasts are shown below, along with a detailed daily report of the storm.

Wishing you all a Happy Thanksgiving Day, filled with peace, joy, and happiness!

Judy Nelson, Editor  
info@flea.club

### **Major Winter Storm Report from Thursday through Early Saturday**

From the National Weather Service - Flagstaff Issued: 4:30 AM Tuesday,  
November 26, 2019

#### KEY POINTS

- Major winter storm early Thursday through early Saturday. Winter Storm Watches are in effect.
- Difficult to impossible travel conditions Thanksgiving Day through Friday.

- 1 to 2+ feet of snow accumulation in the mountains, significant accumulation as low as 4500 feet.

Timing:

- Precipitation will begin early Thursday and then increase in coverage and intensity through the day Thursday (Thanksgiving), continuing on Friday. Snow showers are expected to taper off early Saturday.
- Snow totals: 1 to 2+ feet at elevations above 5500-6000 feet. 2 to 10 inches at elevations between 3500-5500 feet, mainly on Friday.
- Snow levels: Lowering to 5800-7800 feet (lowest west, highest east) by the end of Thursday. Lowering to 4000-6500 feet (lowest west, highest east) by Friday morning and then all the way down to around 3000 feet Friday night.
- Flooding: Some low elevation (mainly within existing waterways) flooding is possible south of the Mogollon Rim in Yavapai and northern Gila counties.
- Winds: Strong south through southwest winds 20 to 30 mph with gusts of 35-45 mph on Wednesday and Thursday. Winds will lead to some blowing and drifting snow Thursday through Friday night.

**WEATHER AND IMPACTS OUTLOOK**

Tue 11/26	Wed 11/27	Thu 11/28	Fri 11/29	Sat 11/30	Sun 12/1	Mon 12/2
Chilly	Windy	Heavy Snow/Rain	Heavy Snow/Rain	Snow showers ending early	Warmer	Warmer



**Northern Arizona Thanksgiving Week**  
 Issued: 11/24/2019 10:31 AM

**MON**  
Windy  
Snow showers Mon night

**TUE**

**WED**  
Rain & mountain snow showers developing by evening

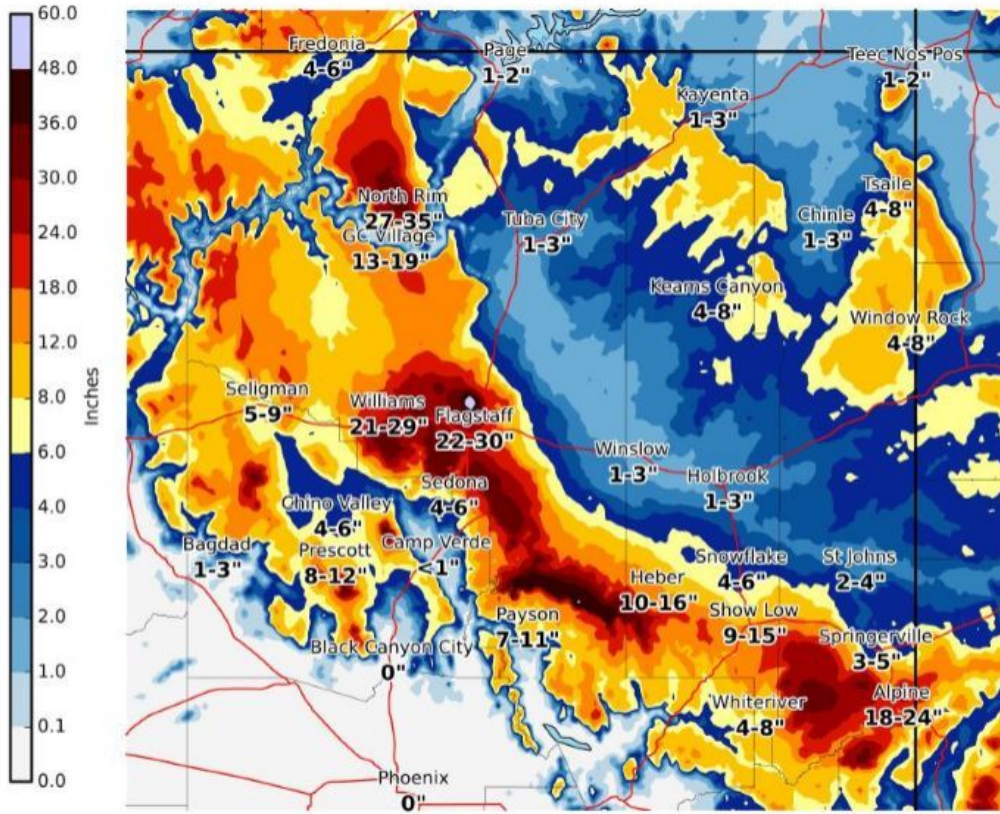
**THU**  
**Hazardous travel likely.**  
Preliminary snowfall Over a foot above 6000 ft 4-12 inches from 4000-6000 ft  
Keep up to date with the forecast this week and **be flexible with your travel plans.**

**FRI**

No Impacts    Minor Impacts    Moderate Impacts    Major Impacts

# **\*\*Preliminary\*\* Forecast Snowfall Amounts**

**Valid: Wednesday Night through Saturday Morning**



**National Weather Service  
Flagstaff, Arizona**

**11/26/2019 03:25 AM MST**

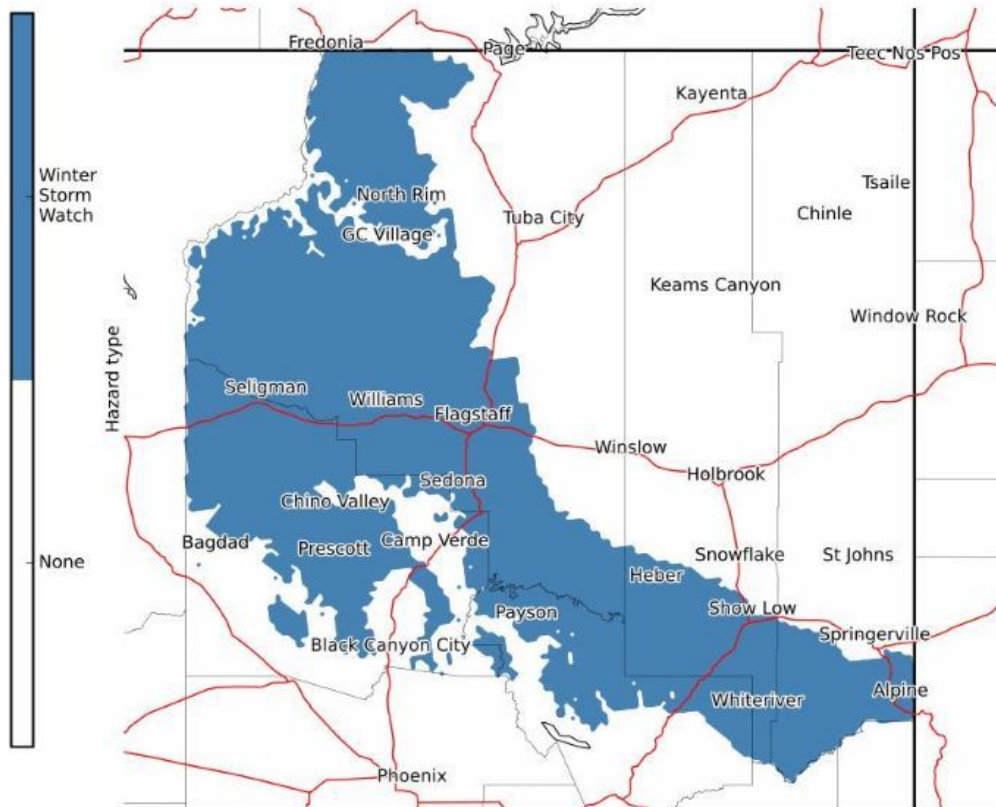
**Follow Us:**   

[weather.gov/Flagstaff/winter](https://weather.gov/Flagstaff/winter)

## FORECAST GRAPHICS

### Winter Storm Watch Above 4500 Feet

Valid: Thanksgiving Day Through Friday Night



### CLOSURE INFORMATION FROM APACHE-SITGREAVES NATIONAL FOREST

Snow is predicted to arrive on the Mogollon Rim the week of November 25, to December 1, 2019 which may leave many forest roads impassable and prompting a temporary winter closure of the Rim Lakes Recreation Area on the Black Mesa Ranger District.

Roads affected by this closure include Forest Road (FR) 300/Rim Road at State Highway 260 west to the Coconino NF/Apache-Sitgreaves National Forests boundary, FR 34 south of Dutch Joe, FR 34/70A junction, FR 120 north of Dutch Joe, FR 169 north of FR100/119 road, FR 225/34 junction, FR 70/63 junction, FR 181, FR 149 to Willow Springs Lake, and FR 171 including the Mogollon Rim Visitor Center parking lot.

To provide for public safety the Rim Top Trailhead at the junction of Forest Road 300 and State Highway 260 will be closed. There is no parking permitted along State Highway 260. Parking along the highway is dangerous and violators will be ticketed. Parking along the FR (512) Young Road is also discouraged due to public safety concerns.

The area south of Highway 260 will be open for travel but not for Christmas tree cutting. County Road 504, cutting area 1b, and County Road 916, cutting area 1c, located on the map included with your Christmas tree permit, will remain open for travel and Christmas tree cutting.

©2019 Forest Lakes Owners Association | P. O. Box 1513, Forest Lakes, AZ 85931

[Web Version](#)

[Forward](#)

[Unsubscribe](#)

Powered by  
**[GoDaddy Email Marketing](#)**®