

Geotechnics and Environmental Science

Galt NT is a company of consulting geotechnical engineers, engineering geologist, and environmental scientists based in Darwin. Operating with our sister company, Galt Geotechnics in Perth, we offer a complete package of quality ground engineering services.

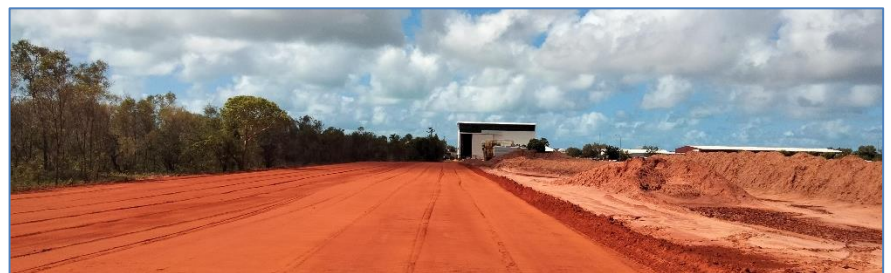
Specialist Field Investigation, Interpretation, Design and Reporting

Professional Expertise:

- ✦ Problem soil and rock sites
- ✦ Slope and pit stability
- ✦ Applying health and safety
- ✦ Supervising and managing geotechnical drilling
- ✦ Core logging
- ✦ Environmental soil sampling and reporting for contaminated sites
- ✦ Foundations
- ✦ Dam Design
- ✦ Earth Structures
- ✦ Marine Structures
- ✦ Ground improvement
- ✦ Site construction support

We can undertake the following services:

- ✦ Site investigation and reporting including preliminary and detailed site investigations for geotechnical and environmental purposes
- ✦ Site and Soil Evaluation (SSE) and reporting, including Long Term Acceptance Rate (LTAR) and Design Loading Rates (DLR) assessments
- ✦ Level 1 and 2 earthworks supervision
- ✦ Soil stabilisation, soil support, excavations and more
- ✦ Pavement design
- ✦ Foundation design
- ✦ Pile design and verification
- ✦ Lateral support and anchor design
- ✦ Forensic investigation and assessment of remediation
- ✦ Detailed analysis of difficult construction sequences
- ✦ Advice on practical approaches to your ground-related problems
- ✦ Work in remote communities
- ✦ Earthworks verification

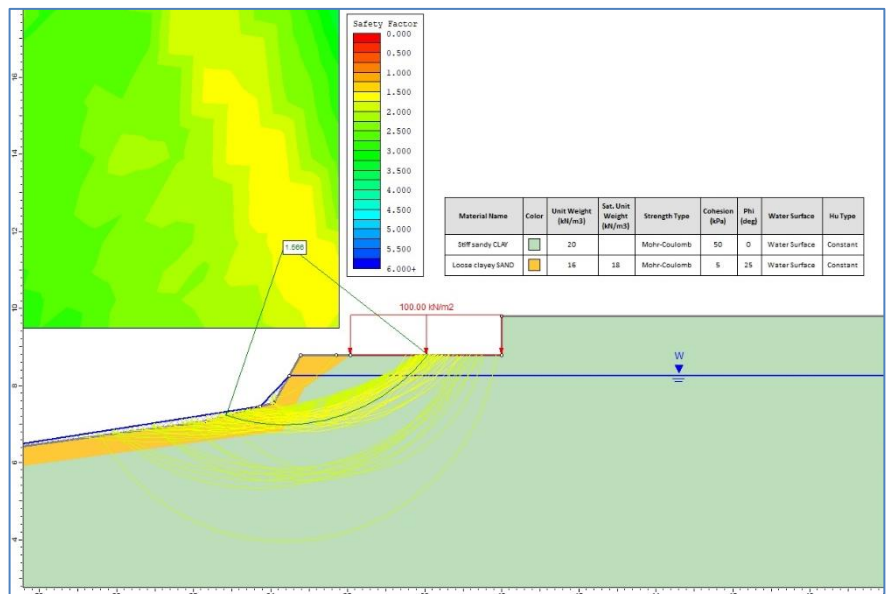


Jurgens Schoeman
Engineering Geologist

M: +61 (0)456-354-498
jurgens.schoeman@galnt.com.au

Location: 2/3 Swan Crescent, WINNELLIE NT 0820
Mail: PO Box 294 Berrimah NT 0828

Galt NT ABN 21 340 243 805
www.galnt.com.au



Geotechnics and Environmental Science

Galt NT is a company of consulting geotechnical engineers, engineering geologist, and environmental scientists based in Darwin. Operating with our sister company, Galt Geotechnics in Perth, we offer a complete package of quality ground engineering services.

Field and Investigation Services

Galt NT can offer a standalone field investigation service, providing factual results only. We can conduct field tests, log test pits and boreholes to AS1726, sample material, and deliver samples for laboratory testing. We will be your team on the ground, no matter where you are based. Of course, we can also provide detailed reporting, recommendations, and design where required.

Specialist equipment:

- ✦ Auger drill rig (mounted on Isuzu 4WD light truck) equipped with an automatic SPT hammer, capable of doing Standard Penetration Tests (SPTs) and Dynamic Probe Super Heavy (DPSH) tests
- ✦ Auger drill with 100 mm and 200 mm diameter augers
- ✦ Tracked Grizzly for DPSH and SPT testing
- ✦ Guelph Permeameter to assess hydraulic conductivity (LTAR/DLR assessments)

Experienced in:

- ✦ Supervising and managing geotechnical drilling
- ✦ Core logging
- ✦ Environmental soil sampling



Jurgens Schoeman
Engineering Geologist

M: +61 (0)456-354-498
jurgens.schoeman@galnt.com.au

Location: 2/3 Swan Crescent, WINNELLIE NT 0820
Mail: PO Box 294 Berrimah NT 0828

Galt NT ABN 21 340 243 805
www.galnt.com.au

