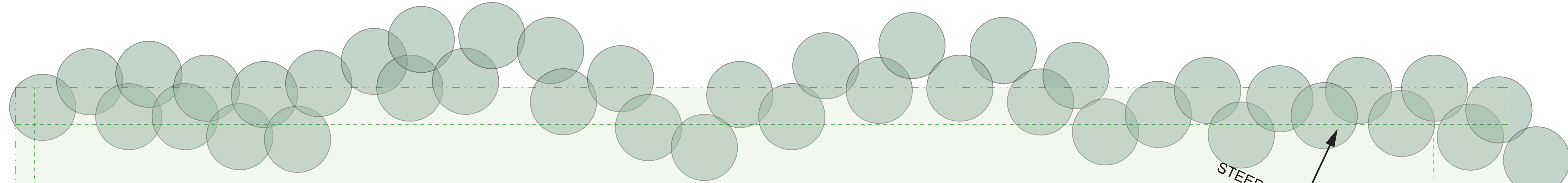


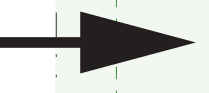
NOISE FROM NORTHERN LIGHTS



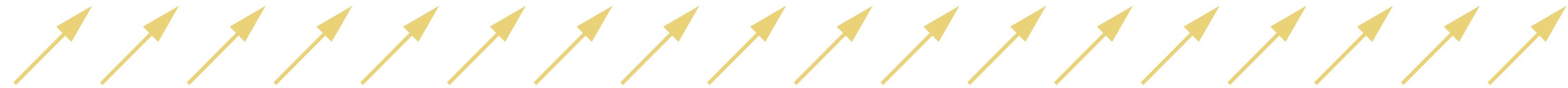
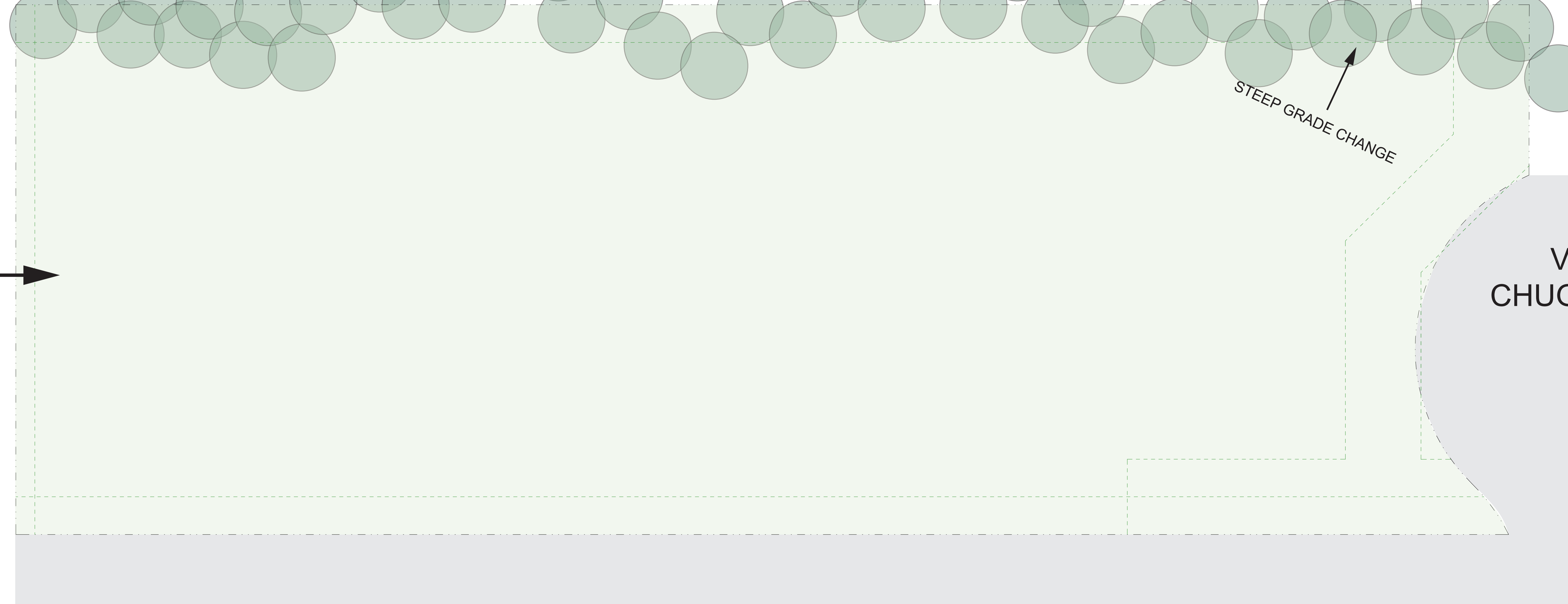
STEEP GRADE CHANGE



VIEW FROM  
RUSTIC GOAT



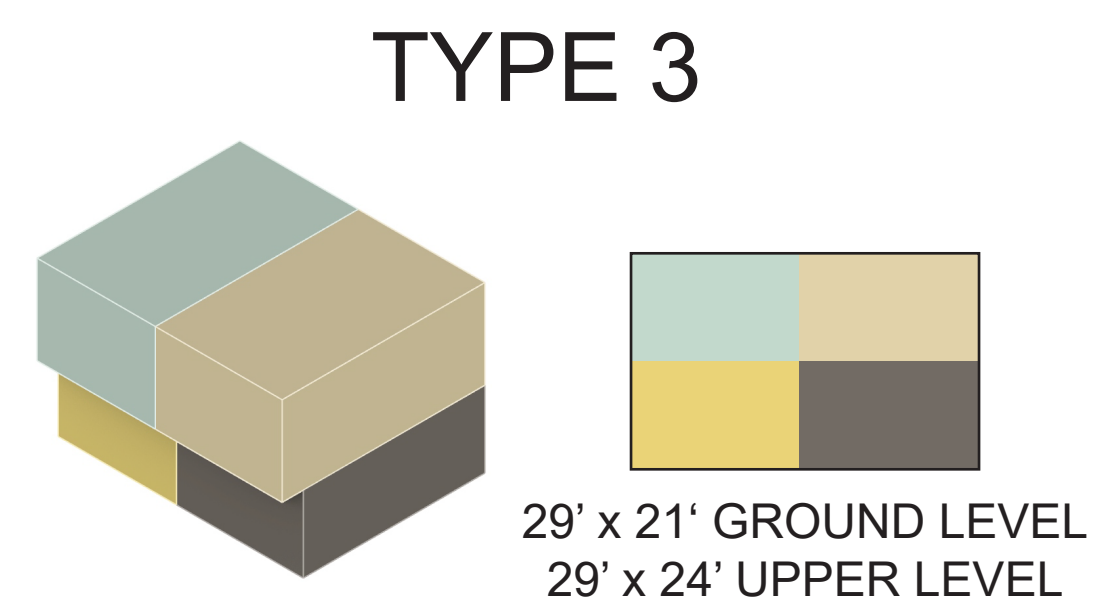
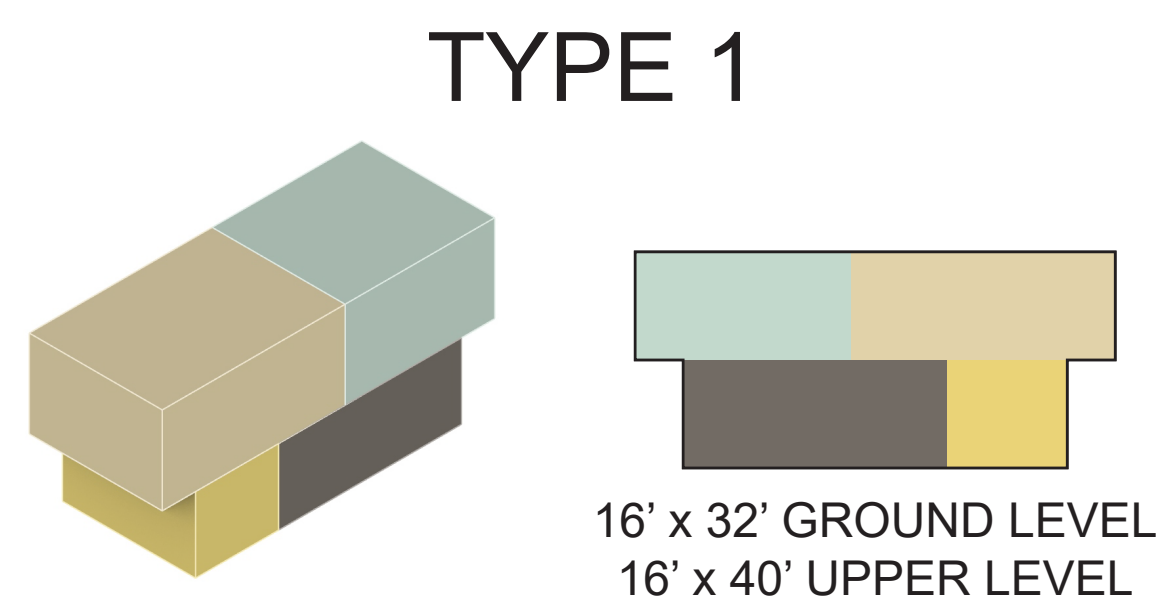
VIEW TO  
CHUGACH MTNS



SW SUNLIGHT

pros  
 2 different unit types  
 maximizes value of vestibule  
 captures views east  
 sw exposure  
 snow maintenance  
 better snow storage along alley  
 views from west

cons  
 view from n lights not great



- VESTIBULE
- GARAGE
- LIVING
- BED/BATH

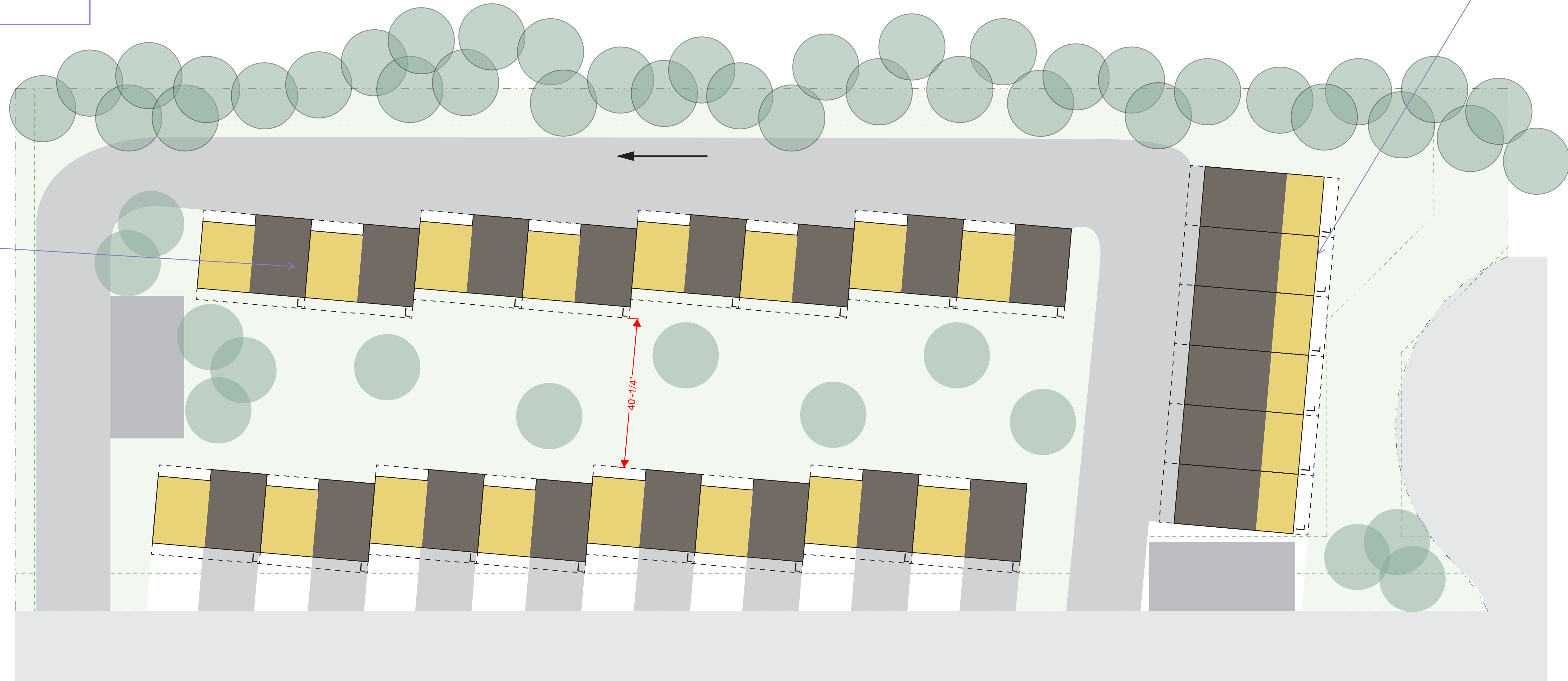
**OPTION 1**  
 26 UNITS  
 18 TYPE 1  
 8 TYPE 3

pros  
 largest open space  
 distance between units  
 2 sided vestibule for majority

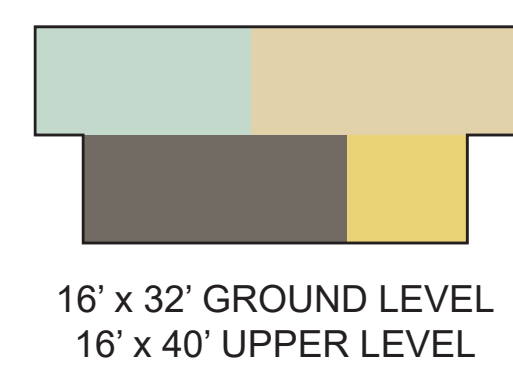
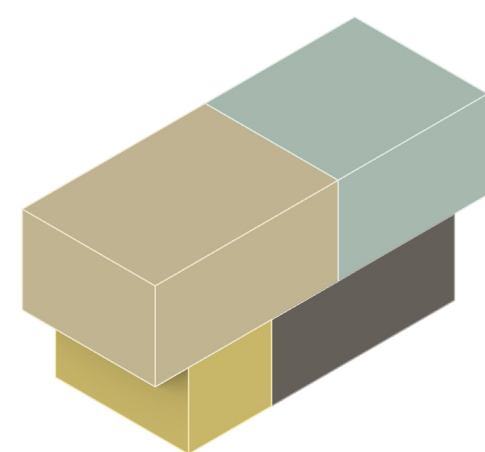
cons  
 lower unit count

could flip to access  
 off of cul de sac

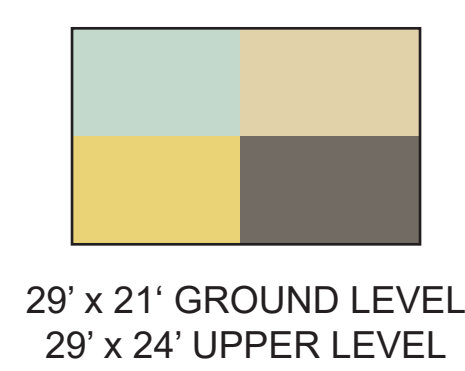
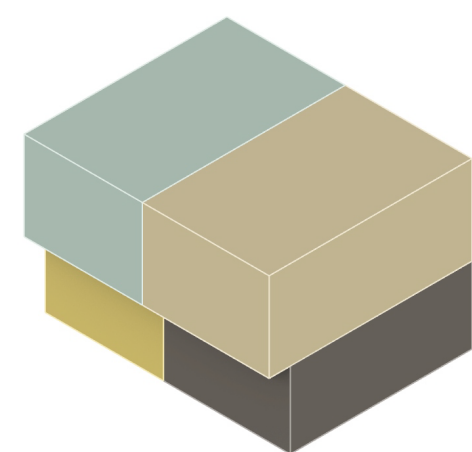
pull down



TYPE 1



TYPE 3



- VESTIBULE
- GARAGE
- LIVING
- BED/BATH

## OPTION 2

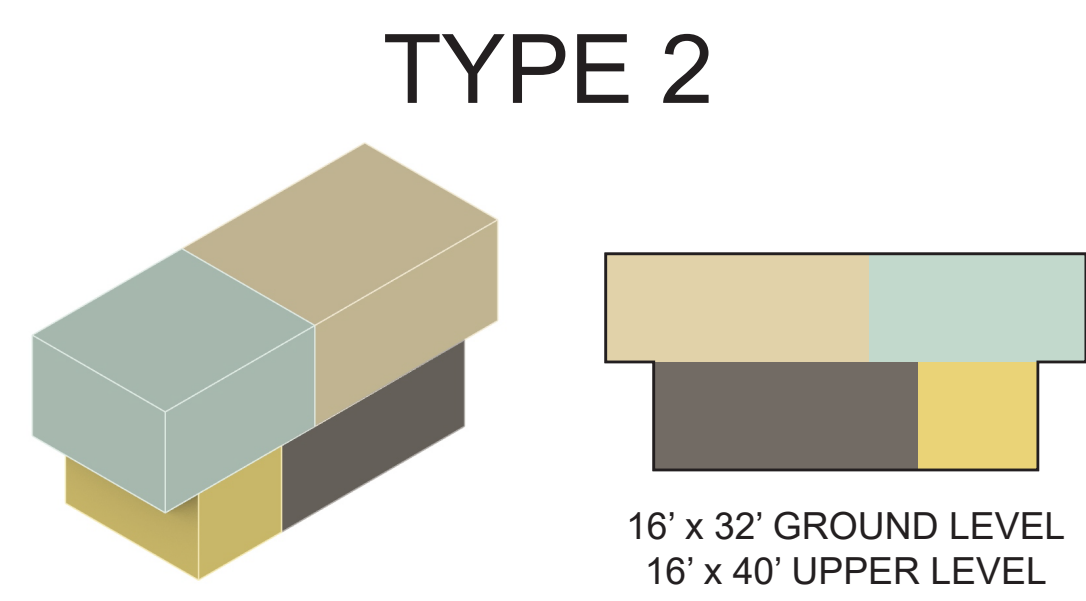
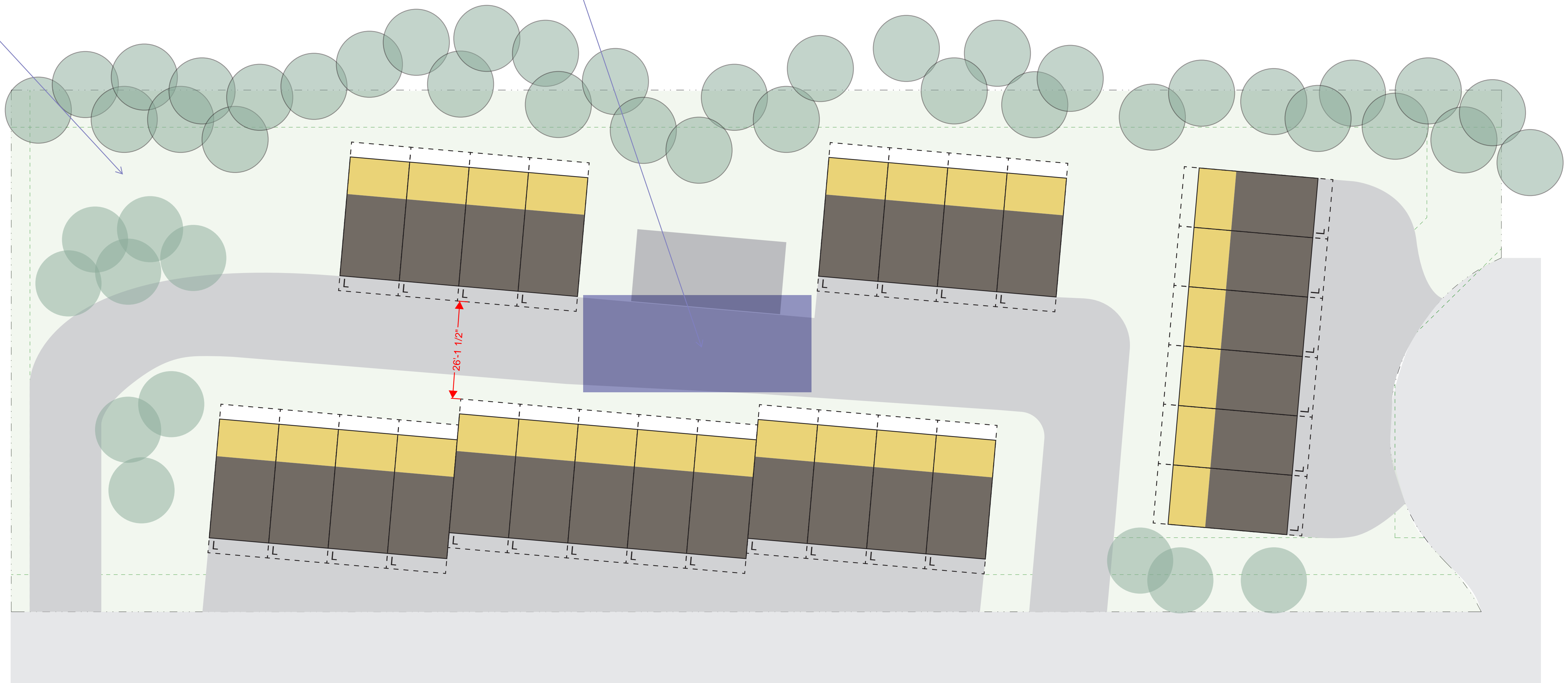
22 UNITS  
 6 TYPE 1  
 16 TYPE 3

pros  
 one unit type \$  
 view from west  
 view from n lighs

cons  
 one unit type design  
 lots of paving for unit access

units up here?

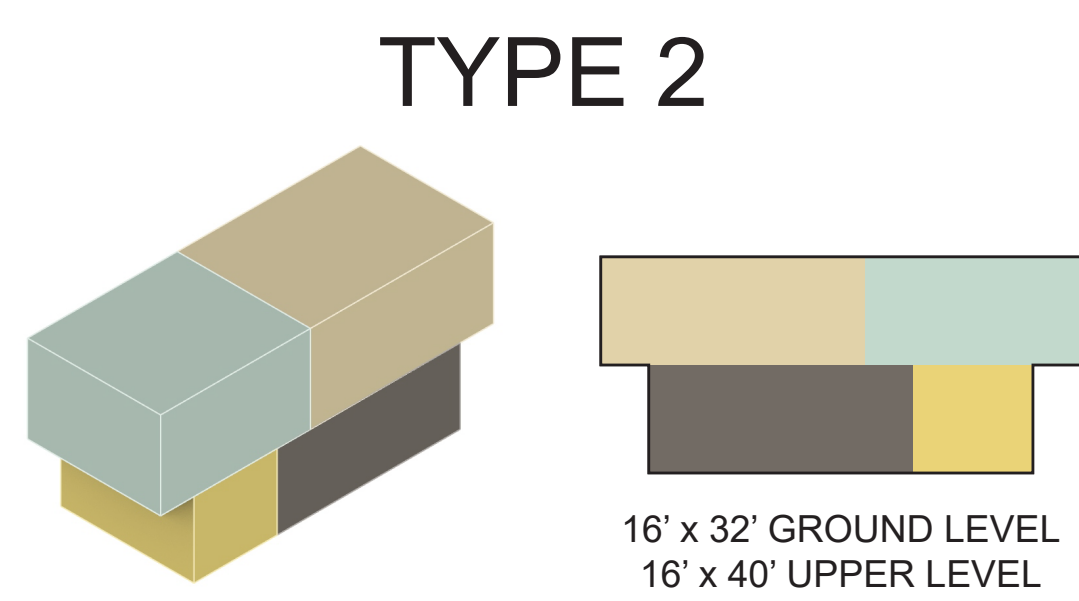
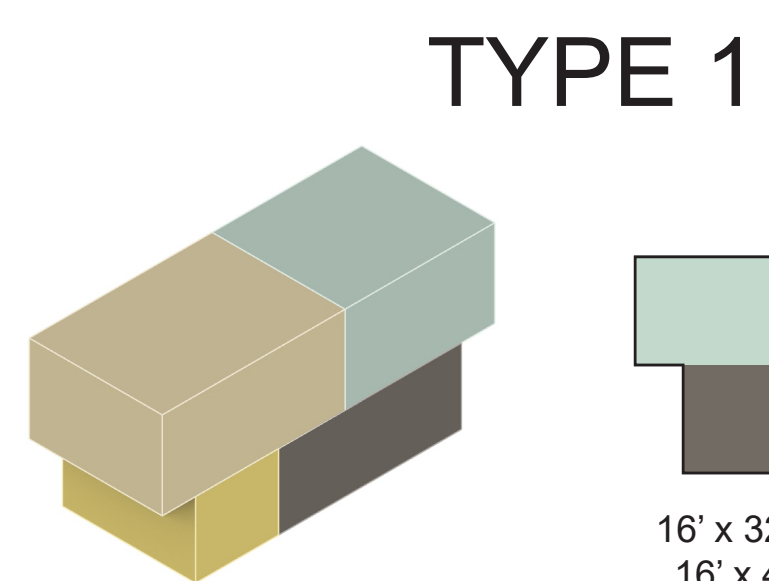
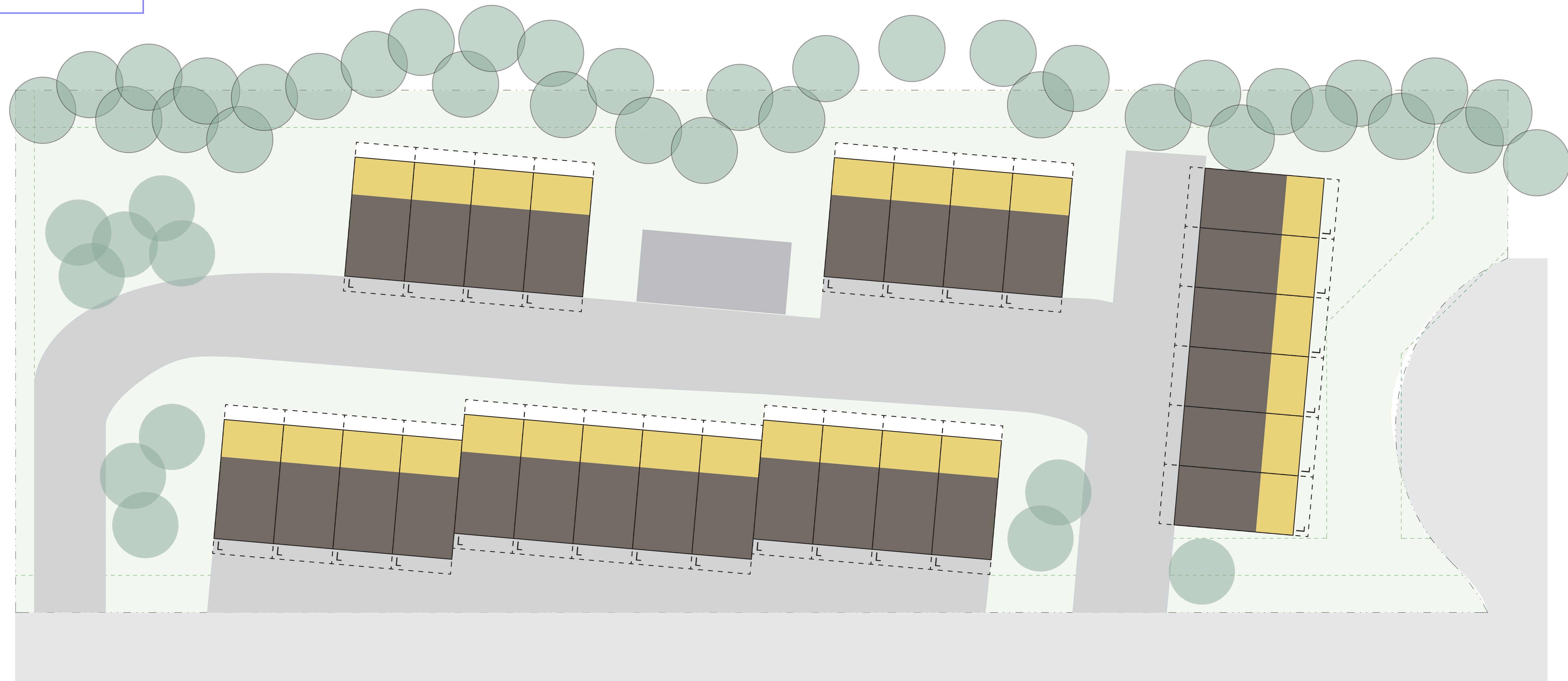
doesn't have to be asphalt



- VESTIBULE
- GARAGE
- LIVING
- BED/BATH

**OPTION 3a**  
 27 UNITS  
 27 TYPE 2

pros



- VESTIBULE
- GARAGE
- LIVING
- BED/BATH

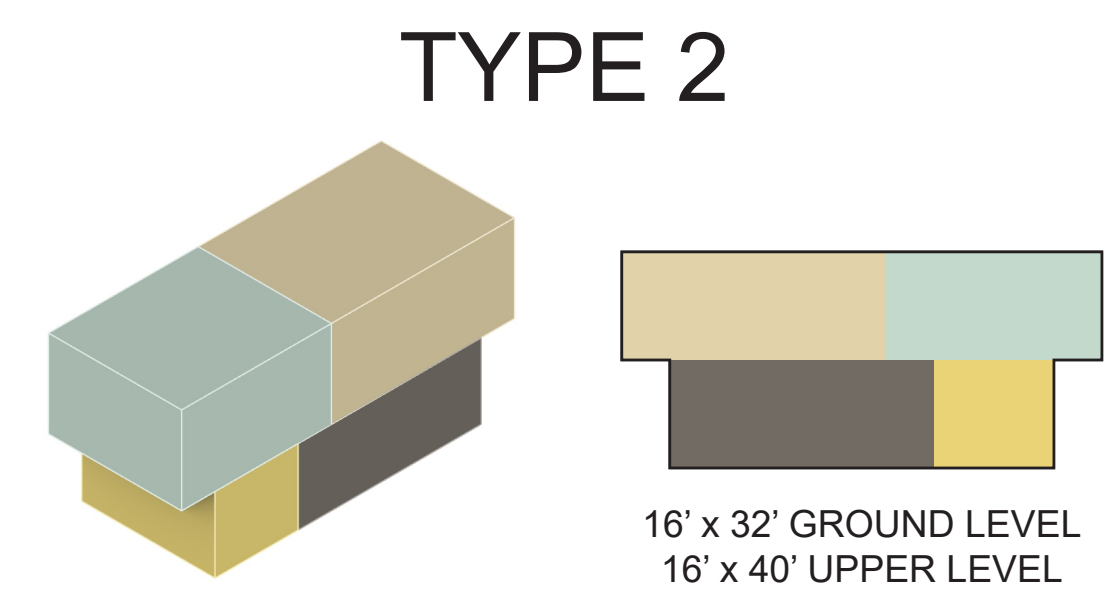
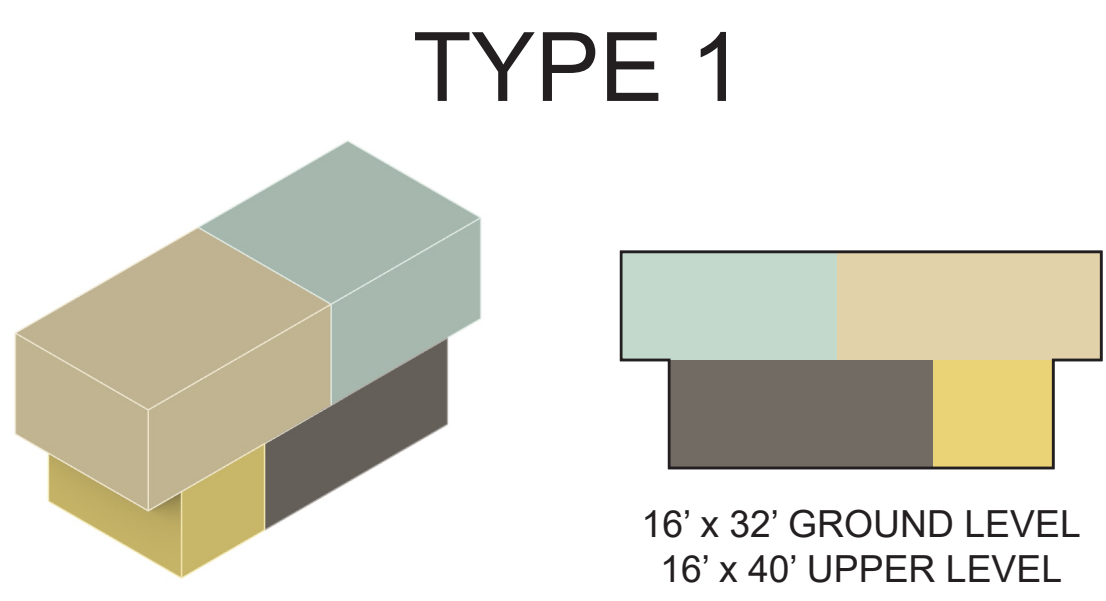
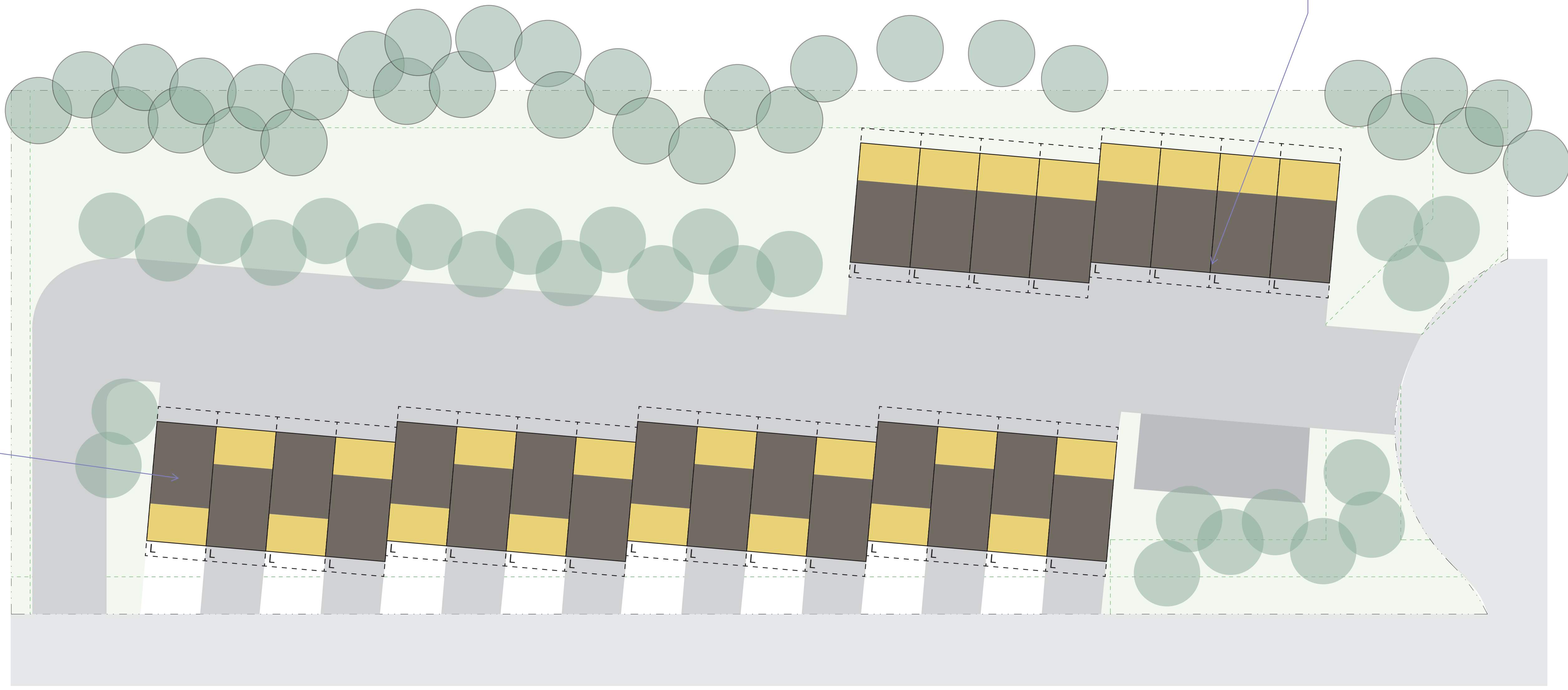
**OPTION 3b**  
27 UNITS  
6 TYPE 1  
21 TYPE 2

pros  
 two buildings  
 units don't look at each other  
 least amount of shadowing  
 snow storage along alley

cons  
 no views east  
 direct access from east park through site  
 snow maintenance

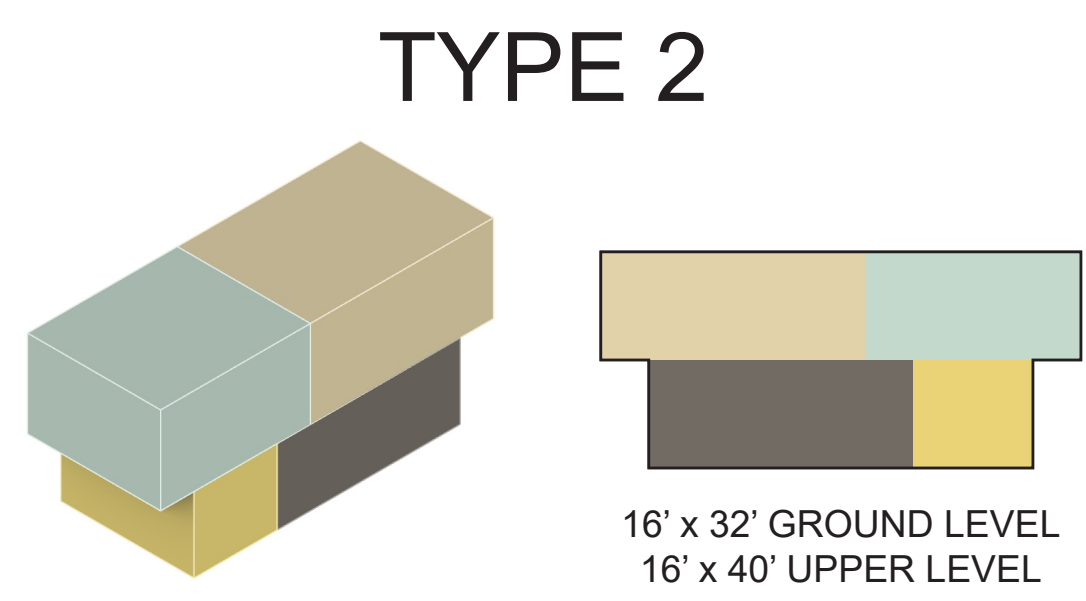
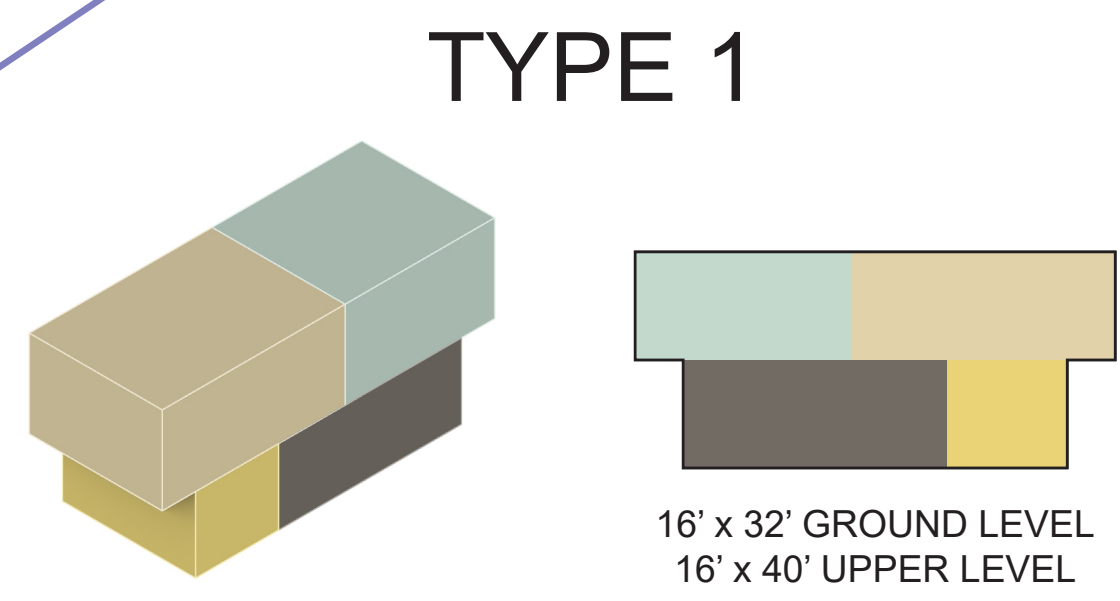
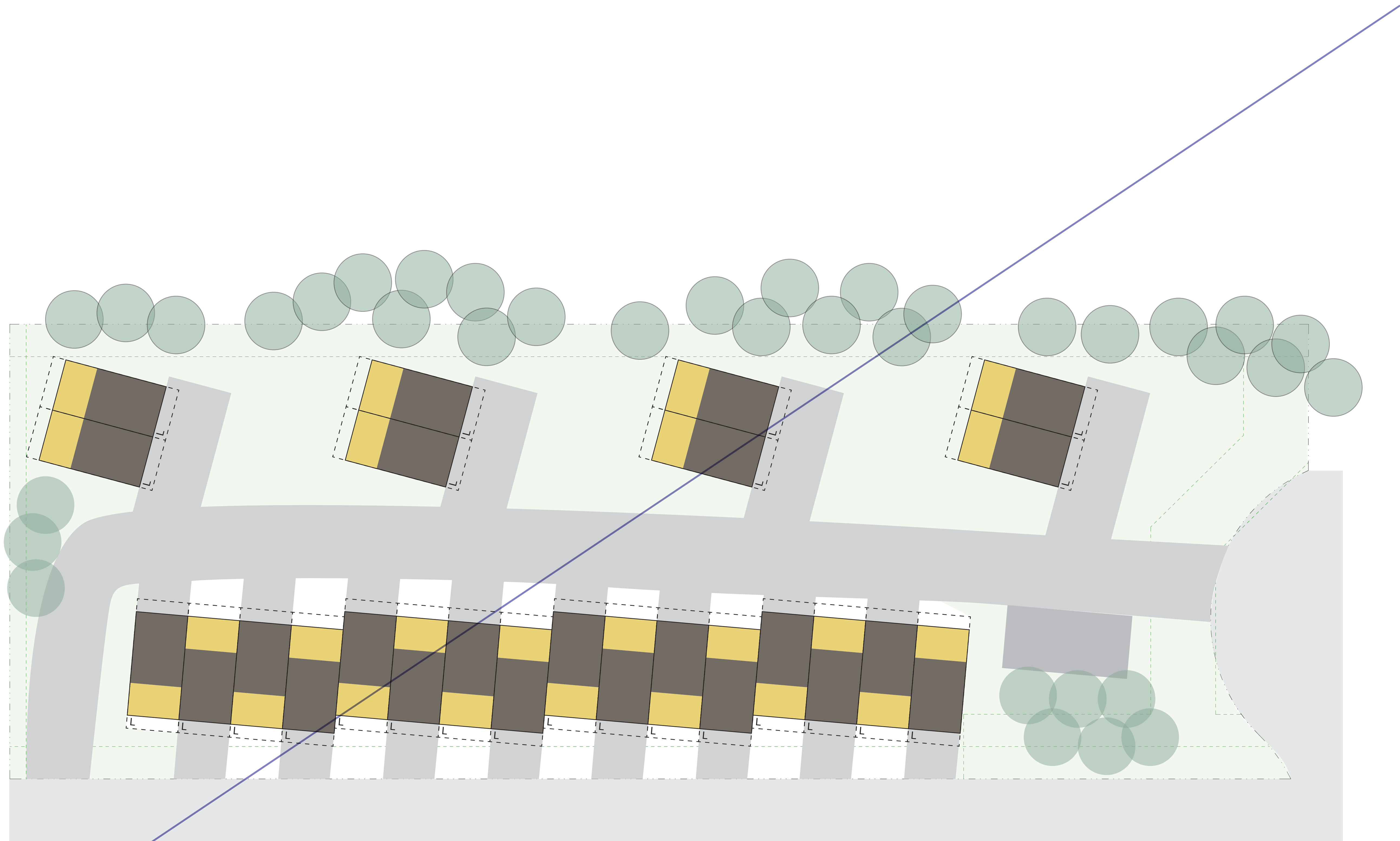
how do we rotate one of these buildings to block people from the west

rotate to rustic goat?



- VESTIBULE
- GARAGE
- LIVING
- BED/BATH

**OPTION 4a**  
 24 UNITS  
 8 TYPE 1  
 16 TYPE 2



- VESTIBULE
- GARAGE
- LIVING
- BED/BATH

**OPTION 4b**  
 24 UNITS  
 8 TYPE 1  
 16 TYPE 2