

H14[®]

MEN'S LUXURY STYLING & GROOMING



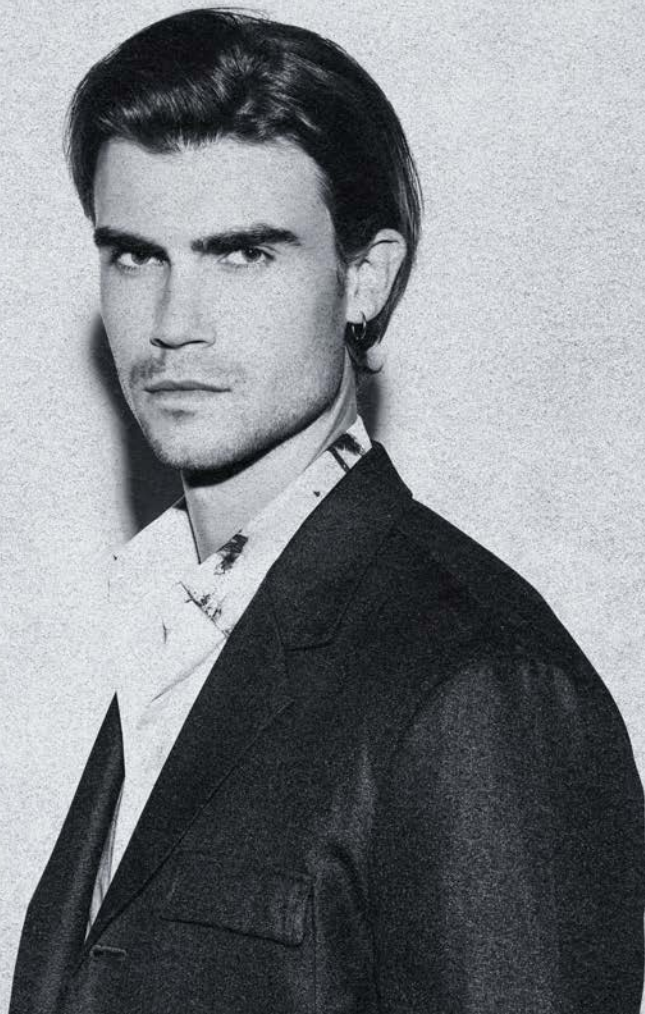
H14[®]

WHERE LUXURY MEETS GROOMING
AND STYLE IS TIMELESS

WE ARE H14 – A LUXURY HAIR
STYLING AND GROOMING BRAND THAT
EMBOLDENS YOU TO EXPRESS YOUR
UNIQUE STYLE WITH UNSHAKABLE
CONFIDENCE.

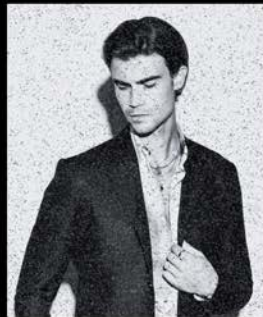
WE FORMULATE AND PACKAGE OUR
PRODUCTS IN EUROPE, USING
GLOBALLY-SOURCED INGREDIENTS
FOR CONSISTENTLY HIGH
PERFORMANCE AND DESIRED
RESULTS.

REIMAGINE, REDEFINE, AND REFINE
YOURSELF – BECAUSE THERE ARE NO
LIMITS WITH H14.





B O R N I N T H E U S A M A D E I N E U R O P E F O R E V E R Y M O D E R N M A N



THE H14 COLLECTION HAS
SOMETHING FOR EVERY MAN

THE ESSENTIALS – PURIFYING
AND THICKENING SHAMPOO AND
CONDITIONER

THE WANTED – PREMIUM STYLING
AND SETTING PRODUCTS FOR
EVERY TYPE OF HAIR

AND THE NEEDED – TOP-TIER
CUTTING AND SHAVING
FORMULATIONS THAT ARE BOTH
GENTLE AND EFFECTIVE





H14 STYLING
& GROOMING



THIC VOLUMIZING SHAMPOO

For incredible cleansing and fullness in one go. THIC Volumizing Shampoo is formulated with natural ingredients that help strengthen and protect hair while providing thickness, volume and shine.



THIC VOLUMIZING CONDITIONER

For enviable luster and fullness in one go. THIC Volumizing Conditioner uses pomegranate, bamboo and rice protein to provide strength, shine, nourishment and weightless volume.





FIBER GUM

MEDIUM HOLD + REFINED TEXTURE

For the ultimate texture with a flexible hold. Fiber Gum gives you smooth, classic shine with a satin finish while also protecting conditioning and enhancing fullness.



GSP

GLASS SHEEN POMADE

For smooth control with optimal shine. The modern alternative to styling gel. GSP is a versatile water-based formula that rinses clean and works great on all hair textures.



RAW MATTE CLAY

STRONG HOLD + NATURAL FINISH

For a natural style with serious holding power. Raw Matte Clay's non-greasy, moldable formulation provides freedom to sculpt and texturize any style.



WHIPPED MOUSSE

MEDIUM HOLD + HIGH SHINE

For sleek modern looks with flex. Whipped Mousse's richly hydrating formula and anti-humitidy factor softens waves and curls, keeping hair smooth and frizz-free all day.





TEXTURE TONIC

SEA SALT SPRAY

Achieve natural volume and hold for all hair styles. Adds perfect texture and creates beachy waves with a light matte finish.



RISE & GRIND

VOLUMIZING POWDER

R&G gives instant matte-finish fullness and texture to polished and undone styles. Use it to add long-lasting, high-definition hold and elevate your look in seconds.





PREP

CUT & SHAVE TONIC

For easy glide and superior control during cutting. Prep is step one in the ultimate grooming experience—it pre-softens hair and soothes skin for the perfect cut and shave.



SHAVE GEL

PREMIUM CLEAR FORMULATION

H14 Shave Gel is carefully formulated to leave your skin smooth and invigorated while preventing razor burn and irritation.



WHISKY WATER

AFTER SHAVE MAN SPLASH

For the ultimate post-shave experience. You can count on Whisky Water to protect, tone and tighten pores, while soothing skin after shaving.

H14 STYLING
& GROOMING

JOIN THE CLUB

H14[®]

CONTACT

WWW.H14HAIR.COM

8565 W 44 AVE. #112
MIAMI FL 33018

+1 954 228 6666

INFO@H14HAIR.COM



A TOUCH OF TIMELESSNESS

A DASH OF CLASS

THE RUSH OF REBELLION


LUXURY GROOMING FOR THE MODERN MAN

BORN IN THE USA

MADE IN EUROPE

H14TM

WWW.H14HAIR.COM

 @H14CLUB